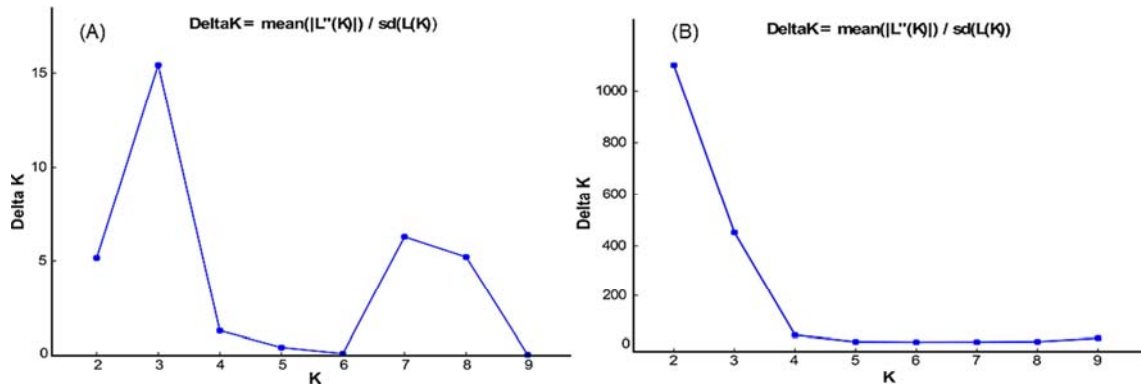
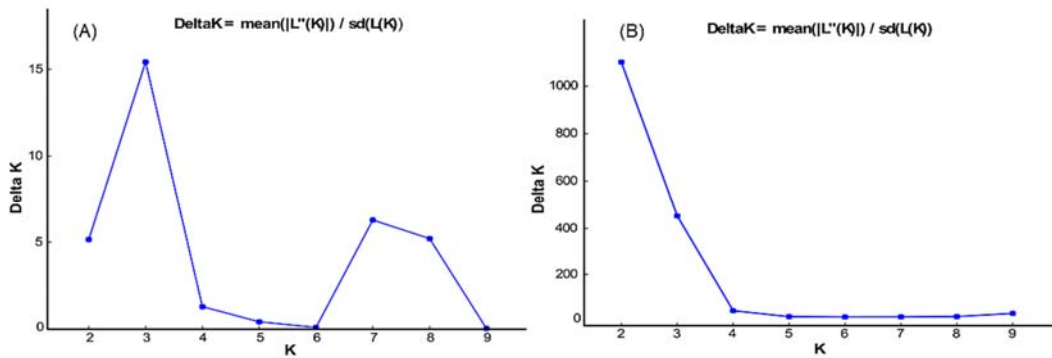
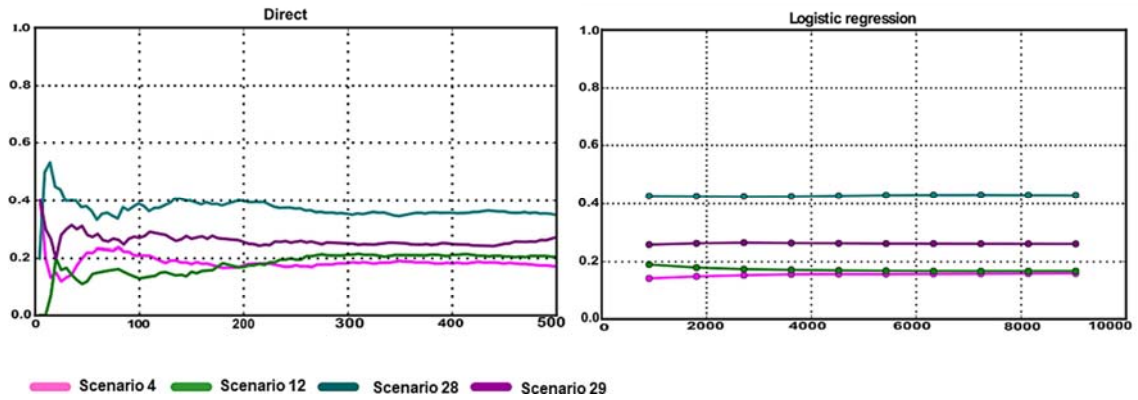


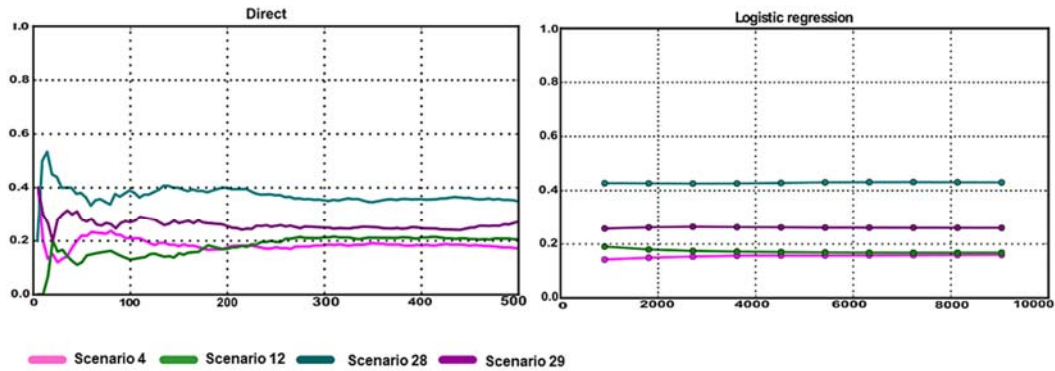
## Supplementary Figures



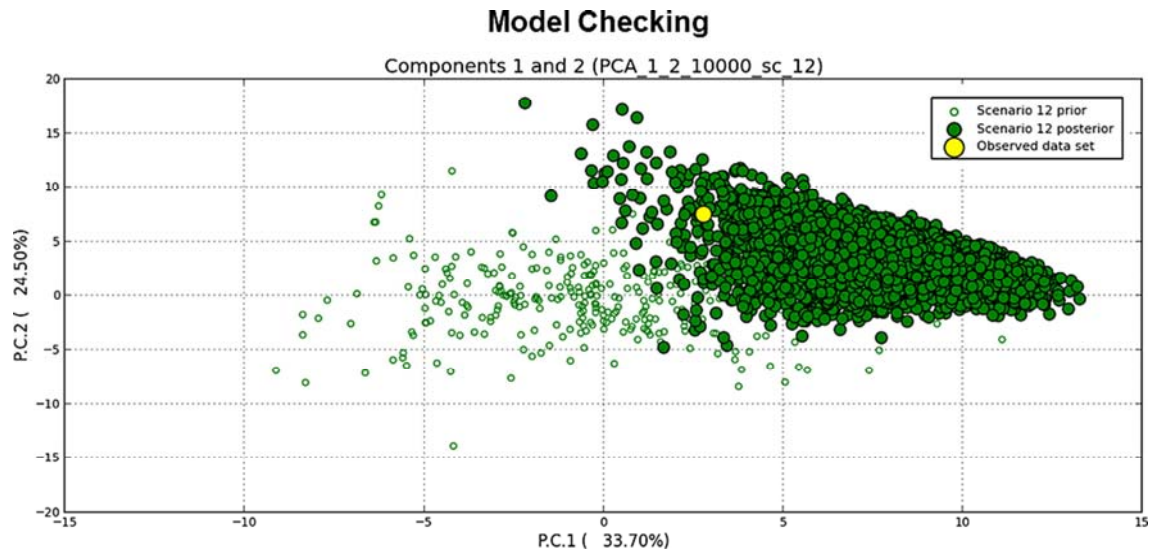
Supplementary Fig.S1. Thirty-one scenarios tested in DIY ABC analysis to infer *D. siricidicola* introduction routes into Australia and New Zealand.



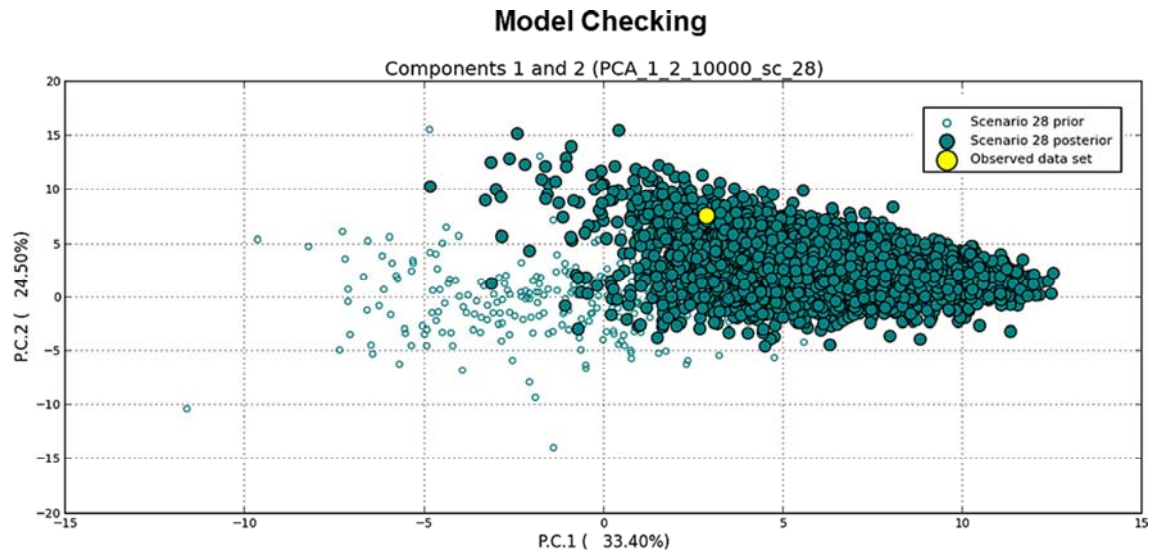
Supplementary Fig. S2. Assessment of the  $\Delta K$  statistics Evanno et al (2005) for the best K search. (A) best  $\Delta K$  when comparing Australia and New Zealand *D. siricidicola* with global population, and (B) best  $\Delta K$  when comparing Australia and New Zealand *D. siricidicola* population.



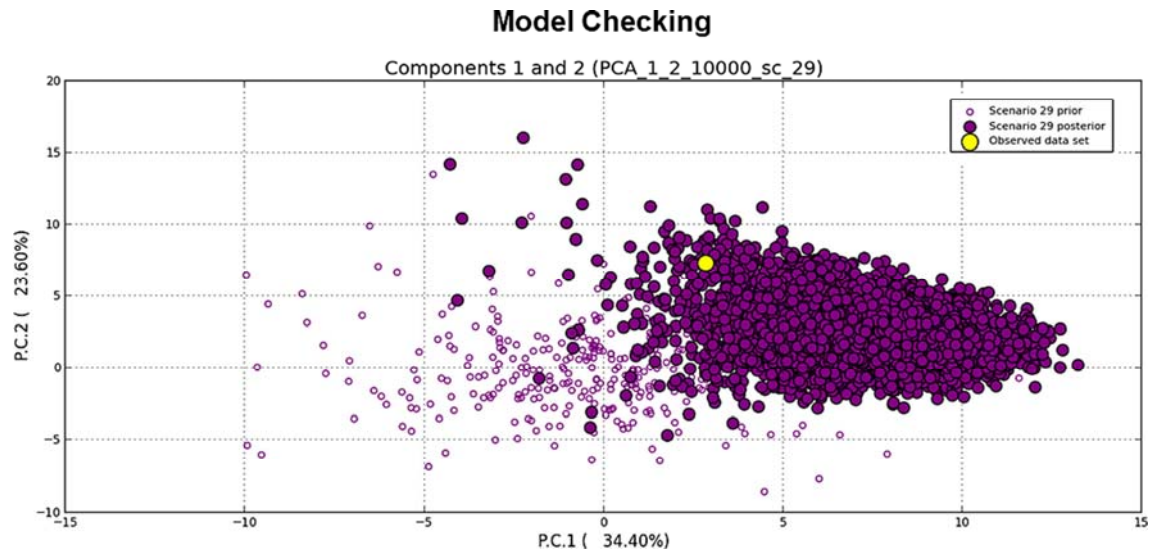
Supplementary Fig. S3. Scenarios tested in DIY ABC analysis to infer *D. siricidicola* introduction routes into Australia and New Zealand. Further validation of the three scenarios chosen in prior analysis using posterior probability-based direct and logistic approaches, while colour indicates computed scenario. The x-axis represents a simulated number to calculate the posterior probability and the y-axis is the posterior probability of each scenario.



Supplementary Fig. S4. DIY ABC analysis to infer *D. siricidicola* introduction routes into Australia and New Zealand. Model checking for scenario 12 to assess posterior support of the scenario.



Supplementary Fig. S5. DIY ABC analysis to infer *D. siricidicola* introduction routes into Australia and New Zealand. Model checking for scenario 28 to assess posterior support of the scenario.



Supplementary Fig. S6. DIY ABC analysis to infer *D. siricidicola* introduction routes into Australia and New Zealand. Model checking for scenario 29 to assess posterior support of the scenario.