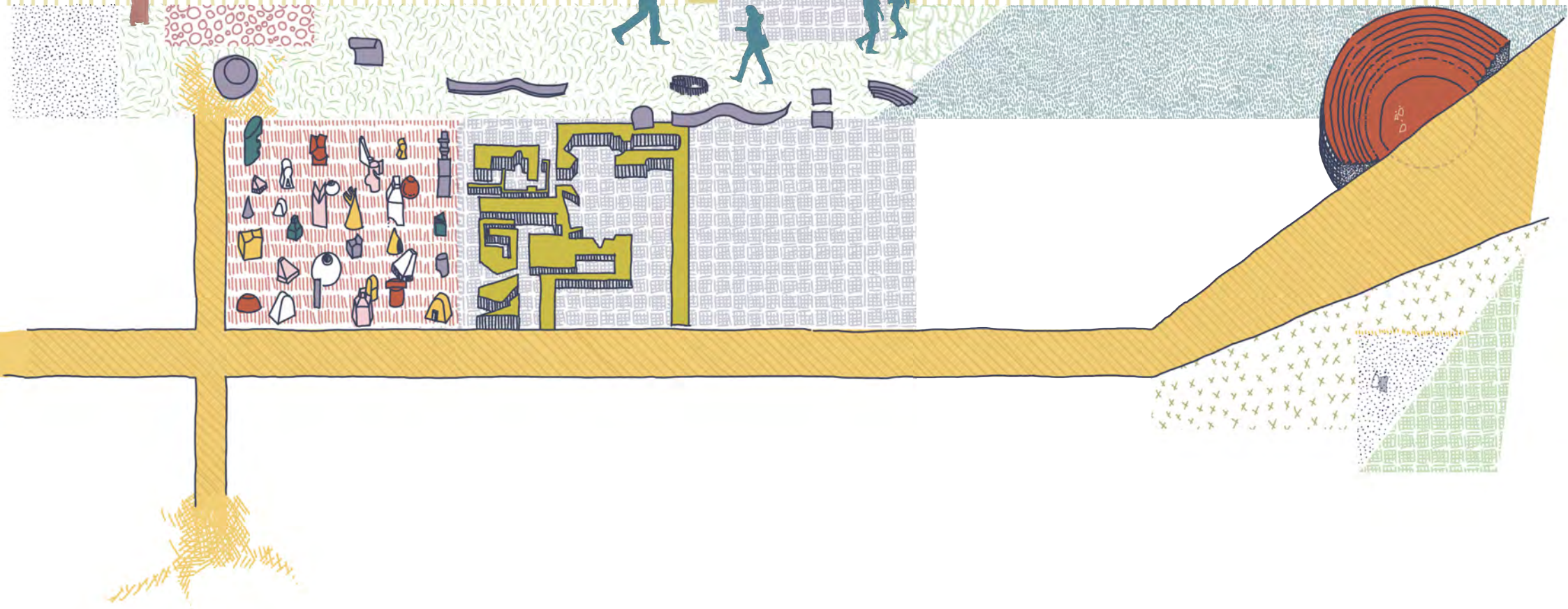
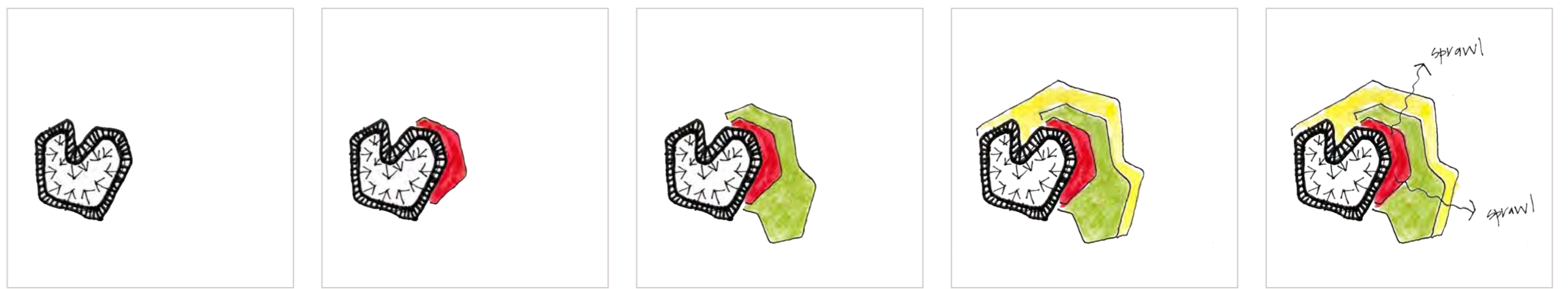


# Site Selection

## P r o c e s s

RE-IMAGINING THE DENSIFICATION OF SUBURBIA

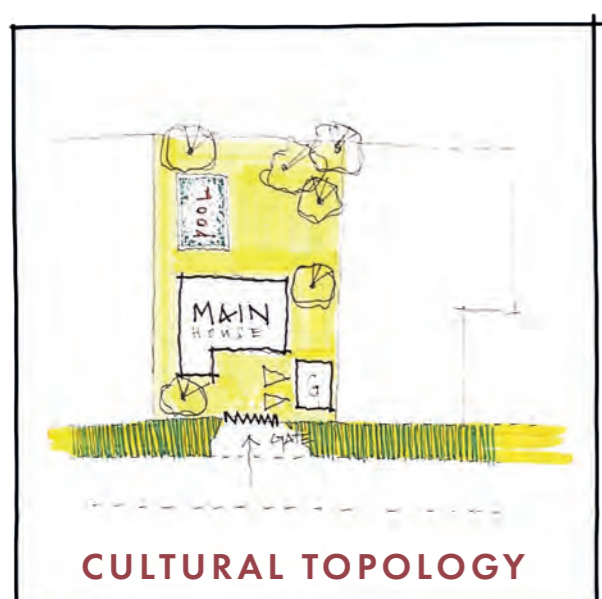




THE CONCERN OF SUBURBAN SPRAWL



S  
S  
T  
U  
D  
Y  
B  
A  
N  
A  
R  
E  
A



## SUBURBAN ANALYSIS

The existing suburban housing lexicon is very rigid and traditional. The study aims to document the current lexicon of residential densification happening within the study area of Menlo Park. The traditional free standing house in the centre of the erf is a remnant of the planning frameworks dating back to colonial 1900s. Contemporary society and planners have started to densify within suburbia throughout the country.

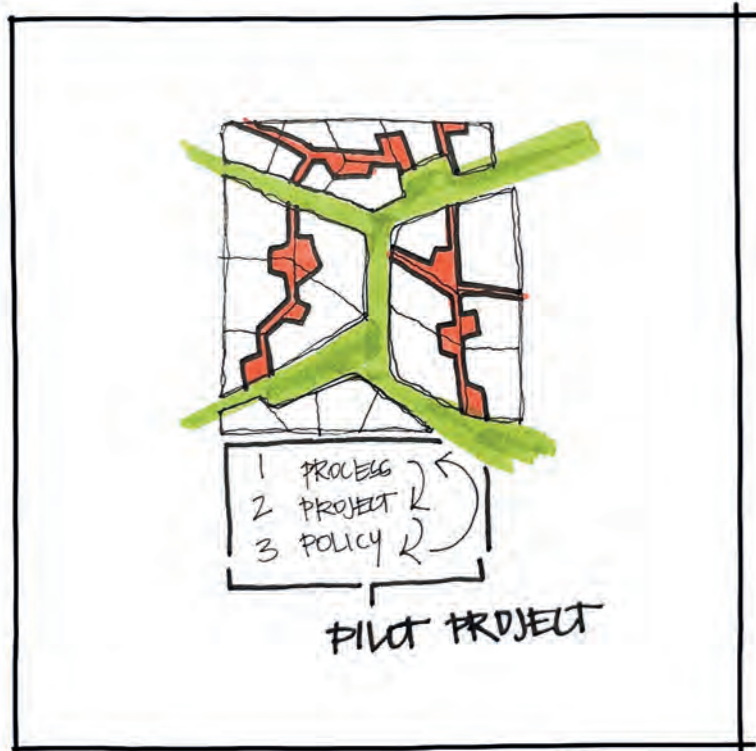
Each process of densification occurs in isolation, focusing solely on the individual erf and designing it inwards towards the centre of the erf. The buildings' backs are turned to the street and communal living environments are not in great supply. As a result big, corporate developments occur readily within new suburban areas and create housing en masse that has little variety and neighbourhood character.

Project goal:

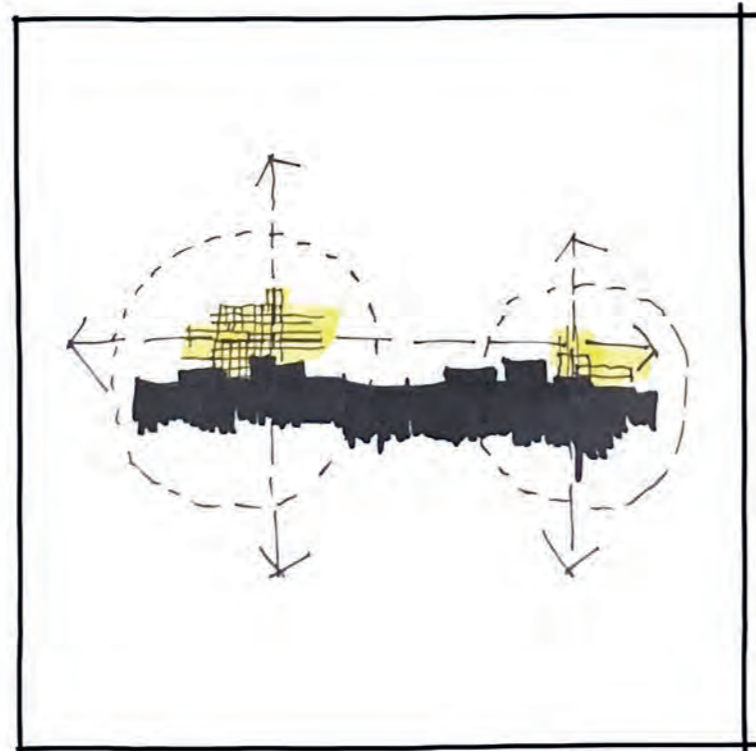
**TO REDEFINE THE SUBURBAN DENSIFICATION LEXICON**

This will be achieved by inserting small scale economic activities along a green spine typology into the sterile + uniform fabric of suburbia. Connecting back to life in the public realm is a central theme.

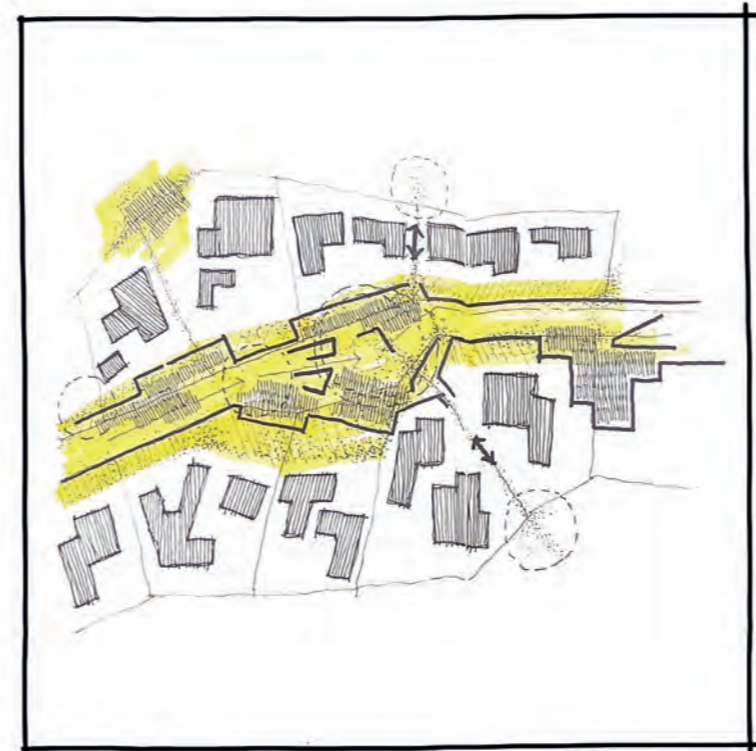
# MENLO PARK / STUDY



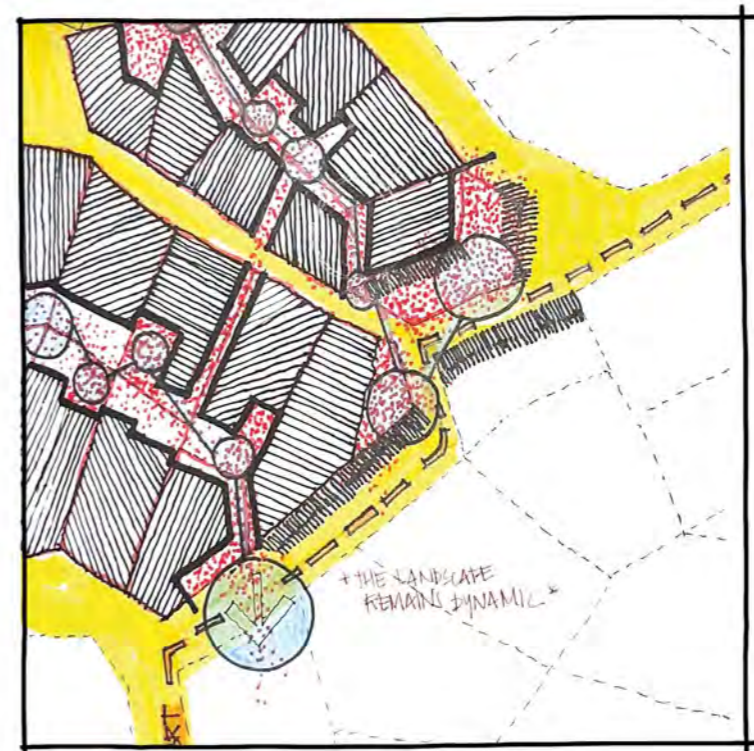
The projects is executed through a cyclical 3-step process.



Sketch showing the need for vertical elements to extend above the suburban skyline.



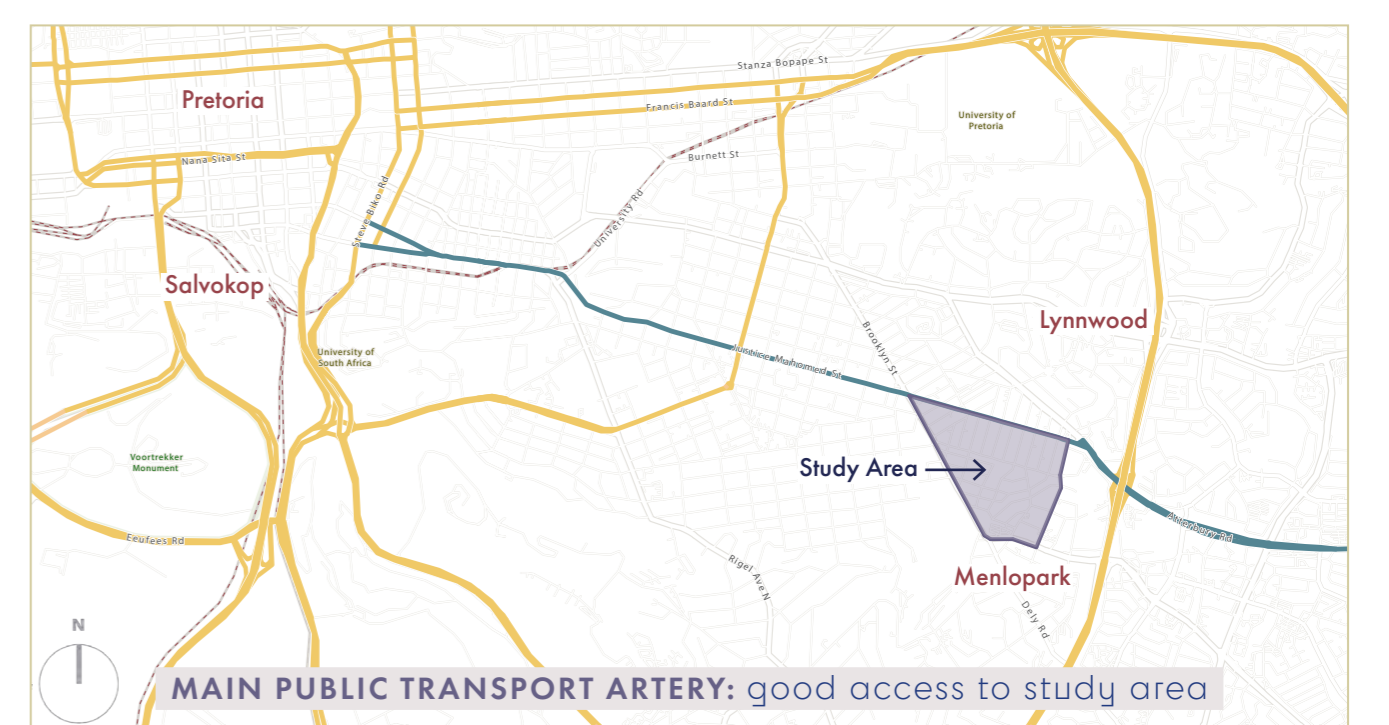
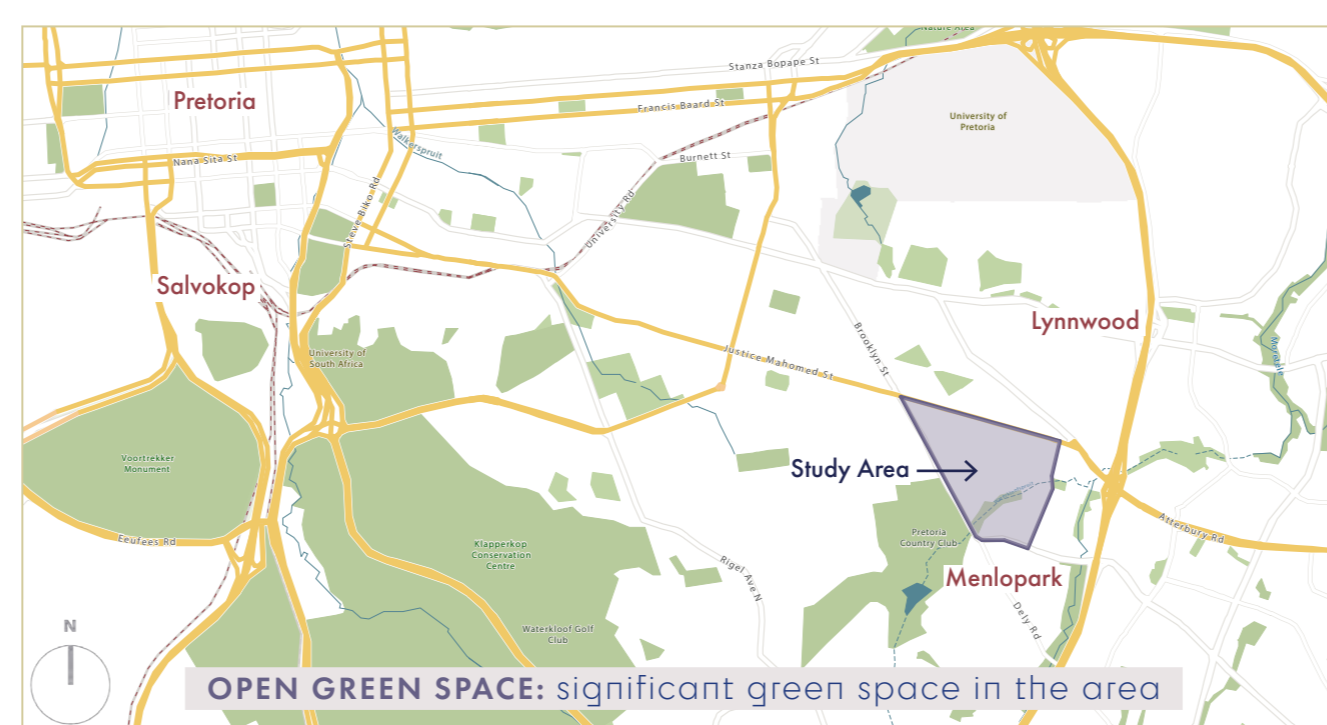
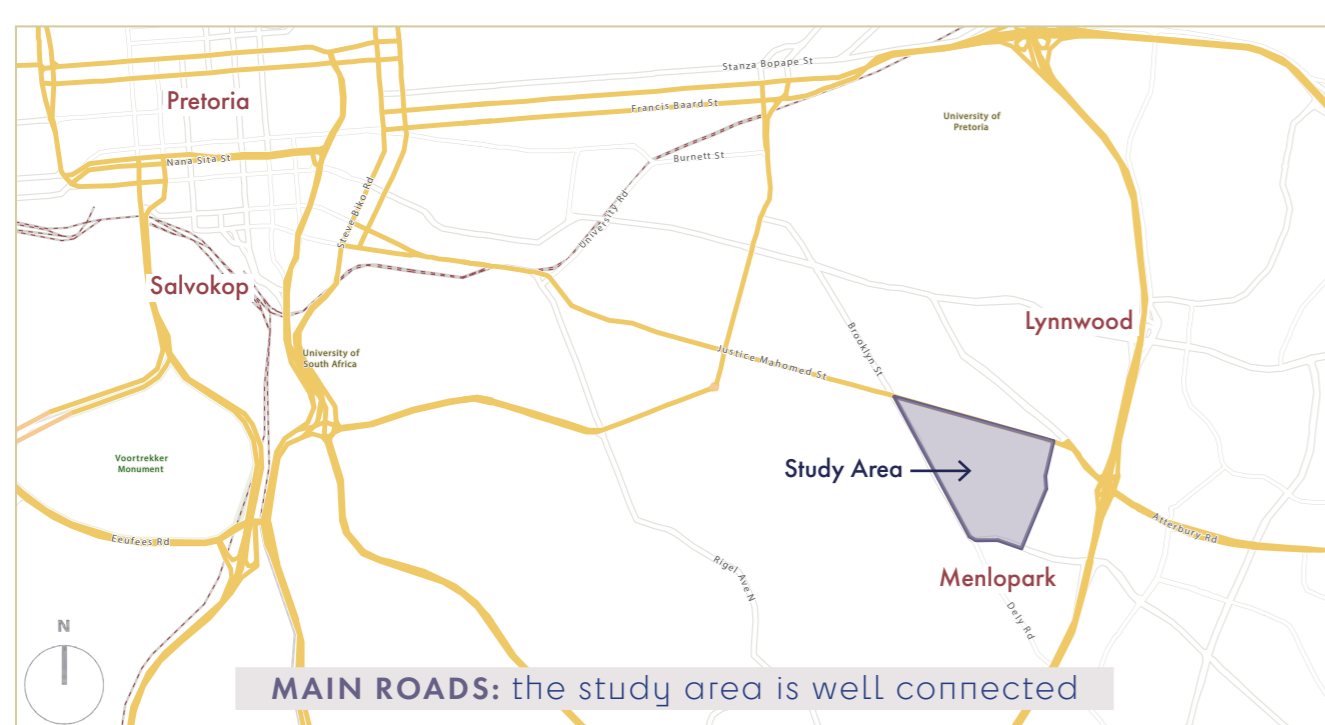
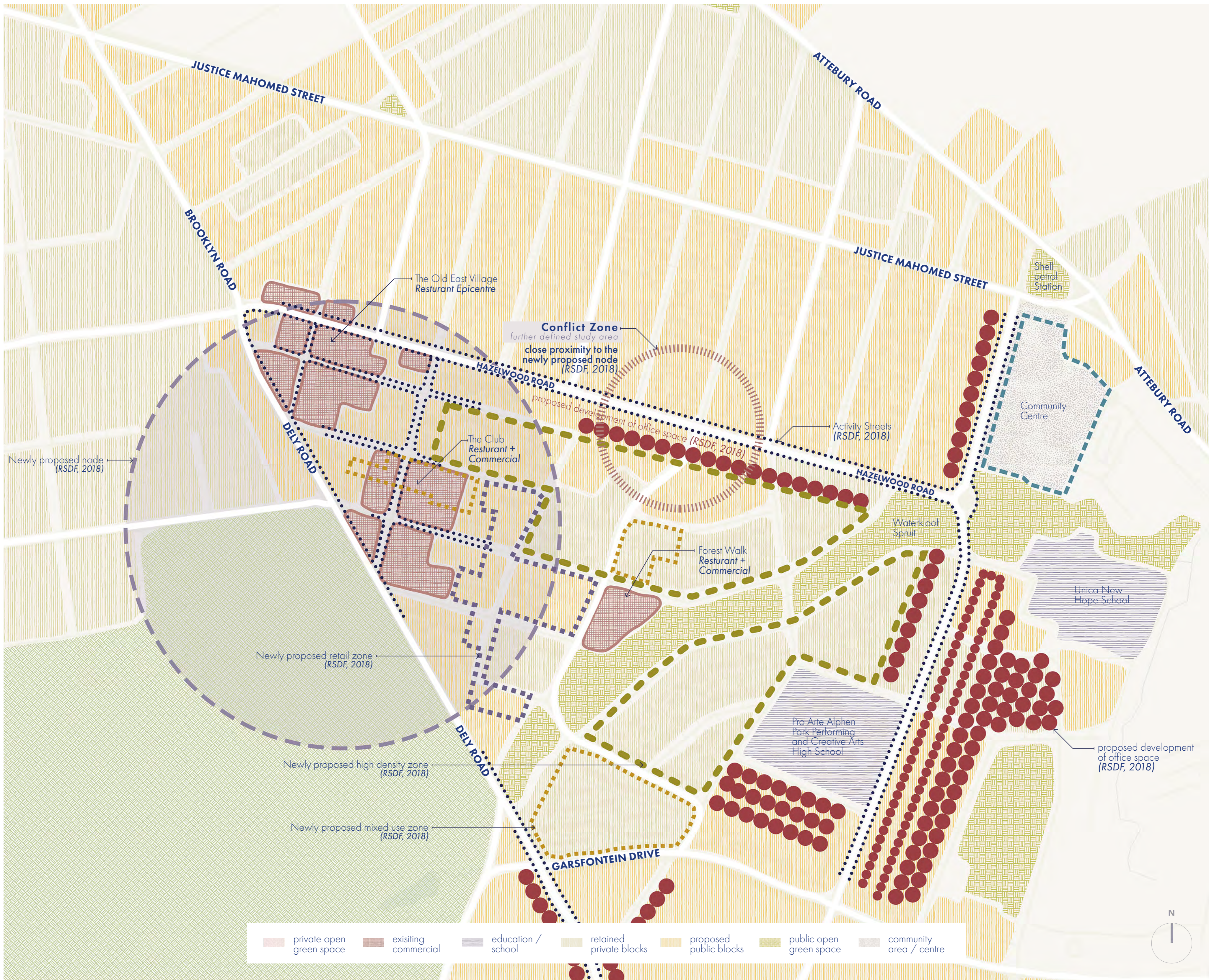
Sketch exploring the opportunities offered by the 3<sup>rd</sup> dwelling by-law implemented by the City of Johannesburg.

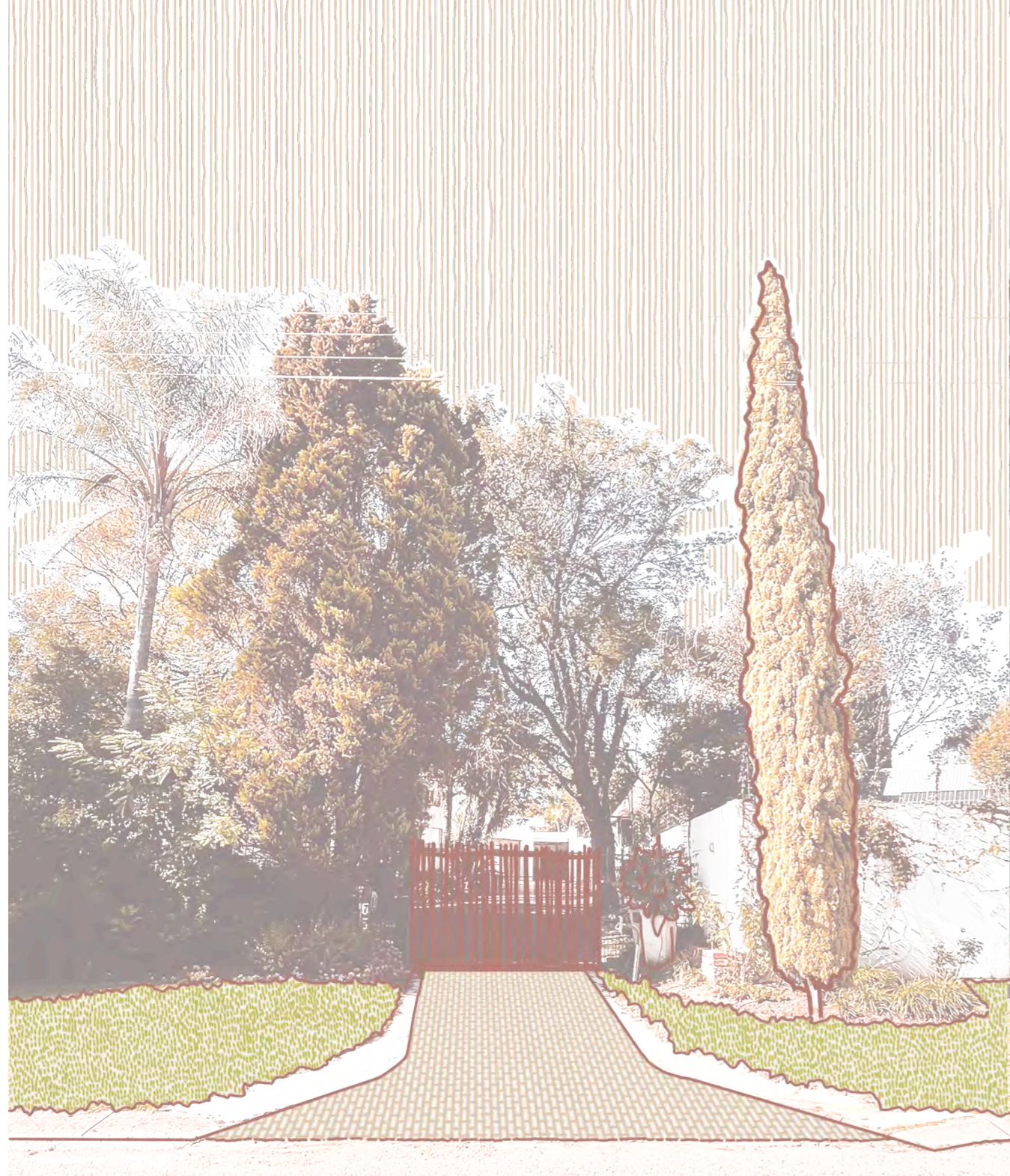


Sketch exploring how the pedestrian corridor could connect to existing public transport networks.



Sketch exploring the options for densifying the interstitial spaces between the residential homes.

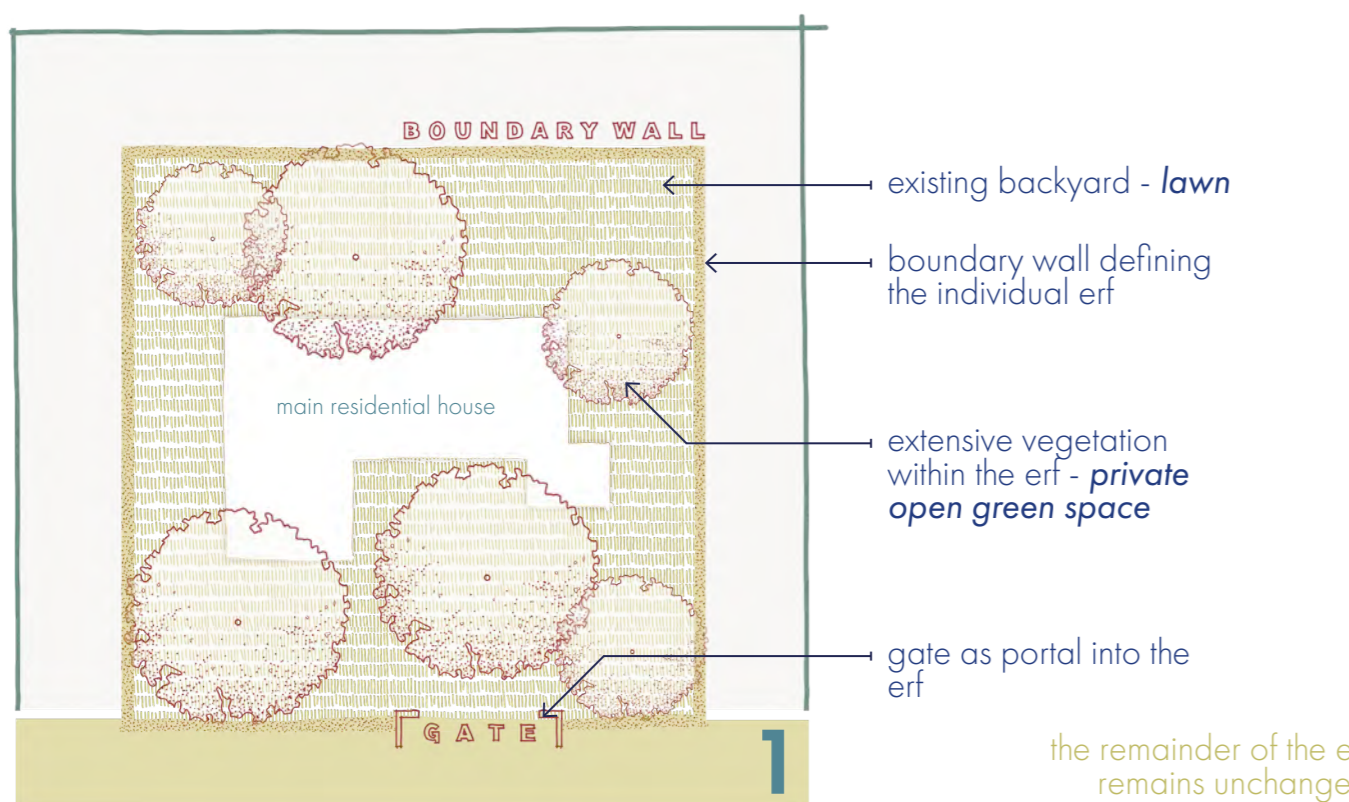




This front gate represents the typical appearance of a suburban residential home within Menlo Park. The traditional palisade gate, prolific foliage, a manicured lawn sidewalk, and some brick pavement used in the drive way.

SUBURBAN SITE VIEWS

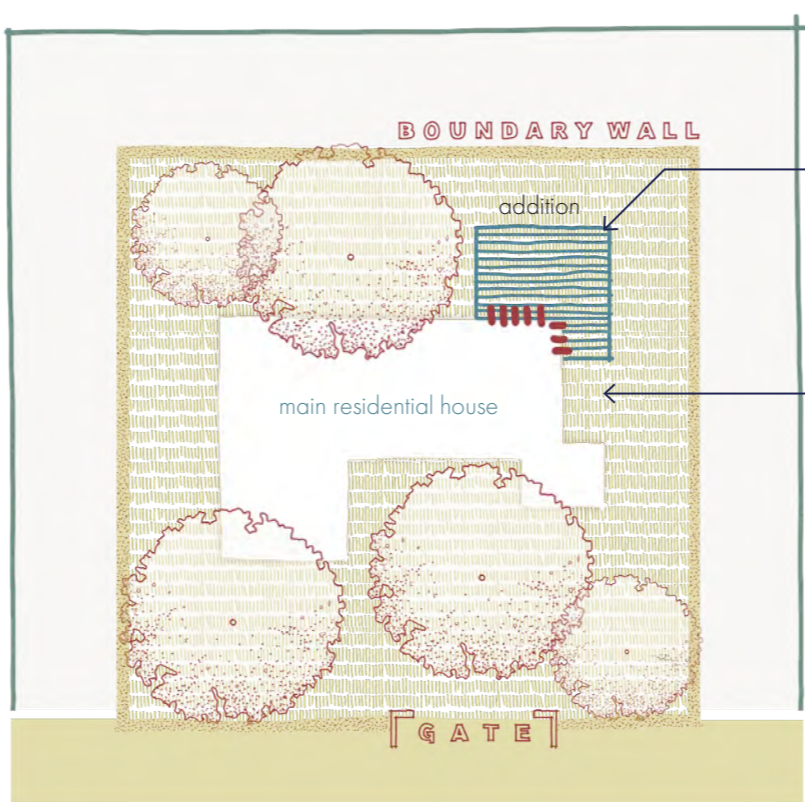
EXISTING DENSIFICATION LEXICON



SCENARIO 1  
free-standing solo house

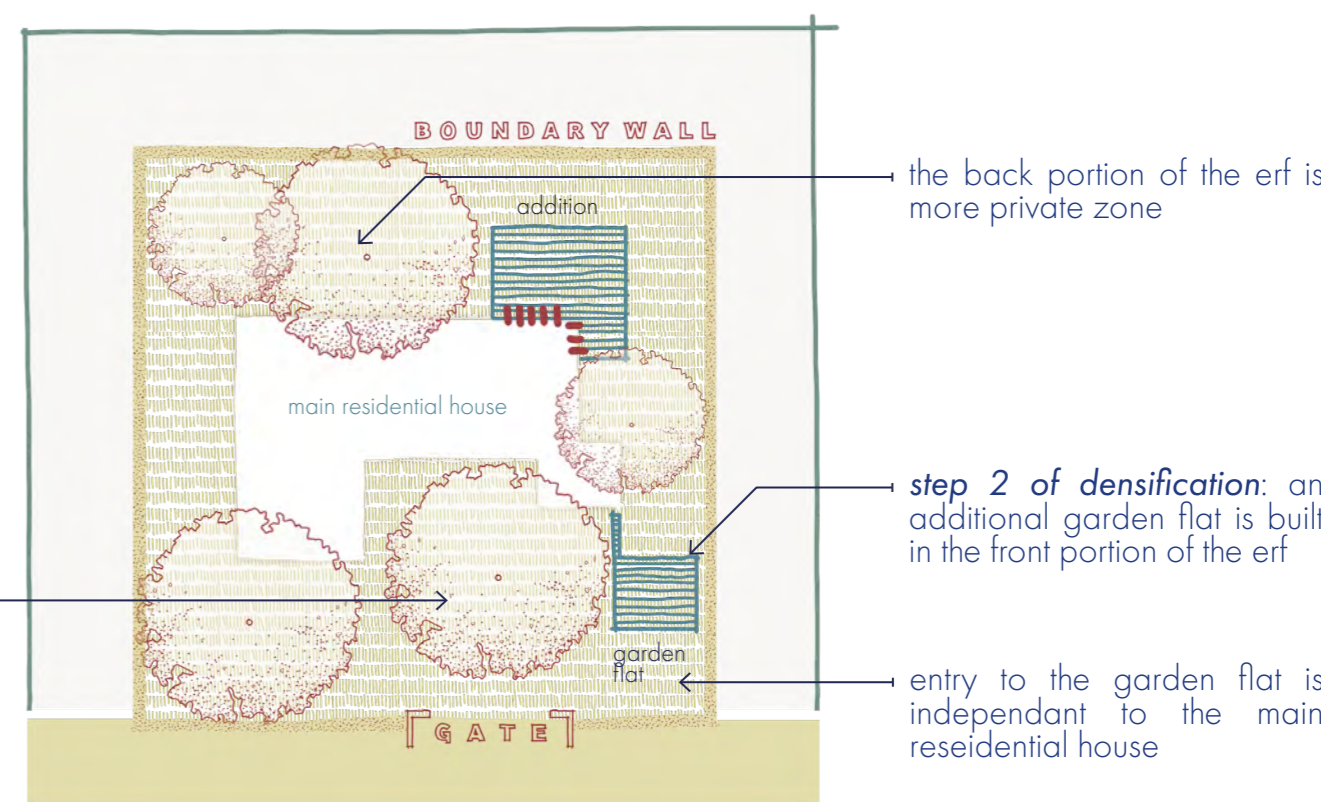
house in centre of erf

this type of erf configuration was typical during the setting out of the suburb during the early colonial neighbourhood planning frameworks (1950s)



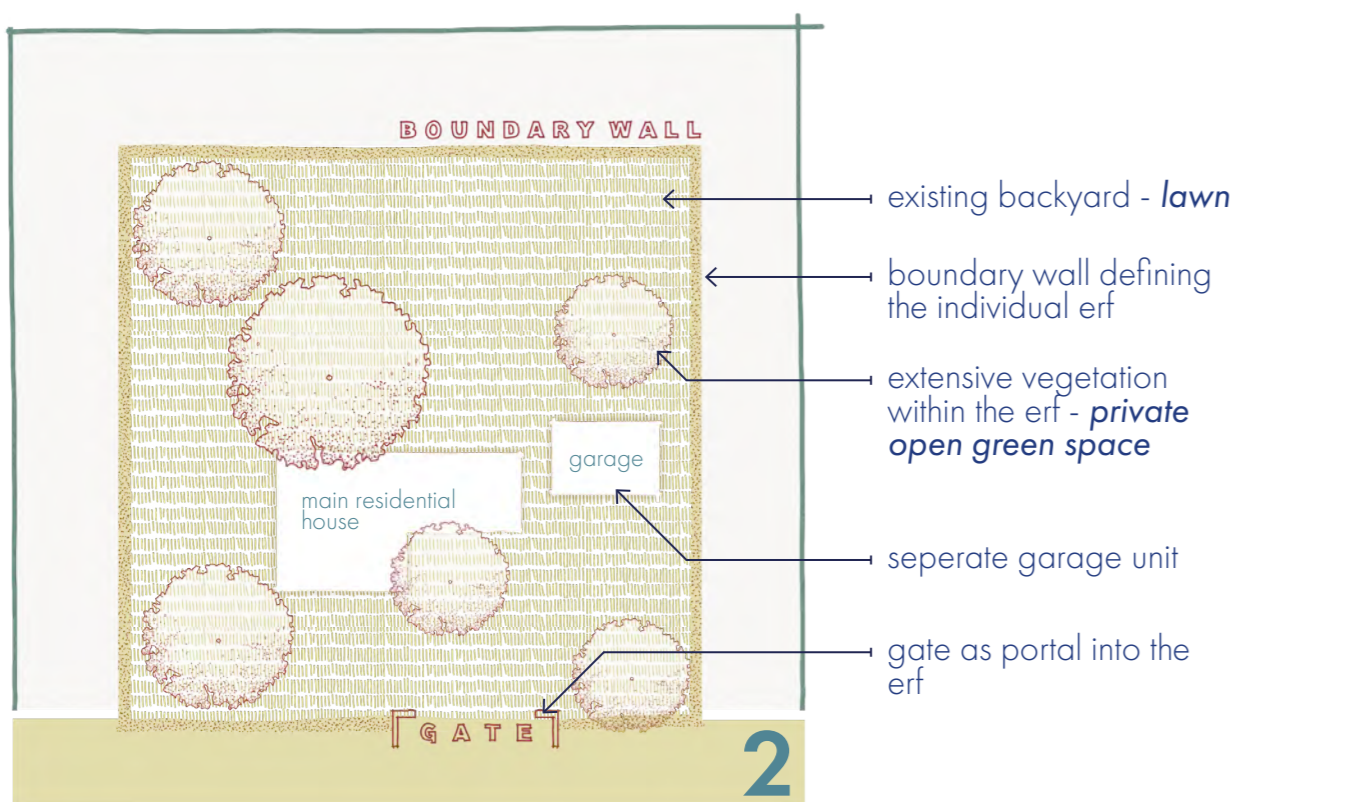
SCENARIO 1  
free-standing solo house

addition to the main house



SCENARIO 1  
free-standing solo house

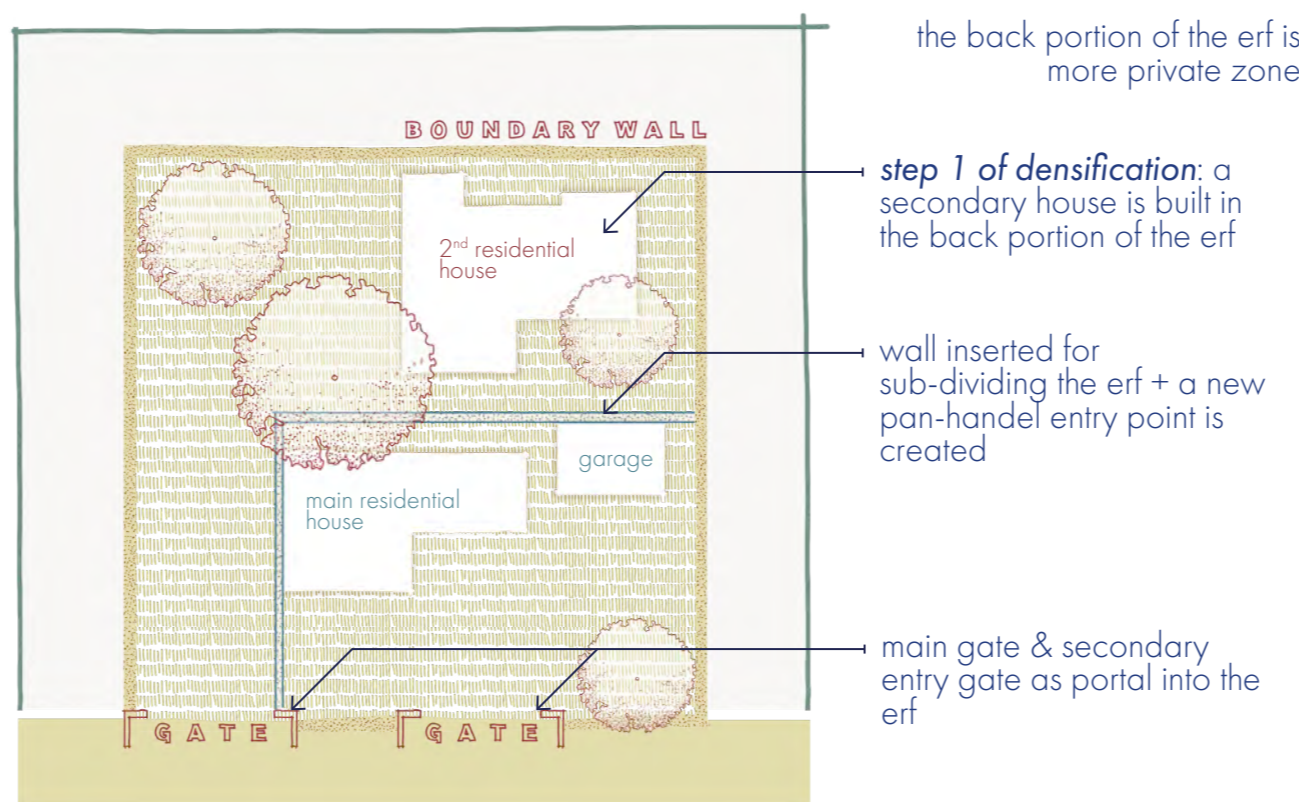
an additional garden flat is added, possibility of renting the unit as a secondary income



SCENARIO 2  
free-standing solo house

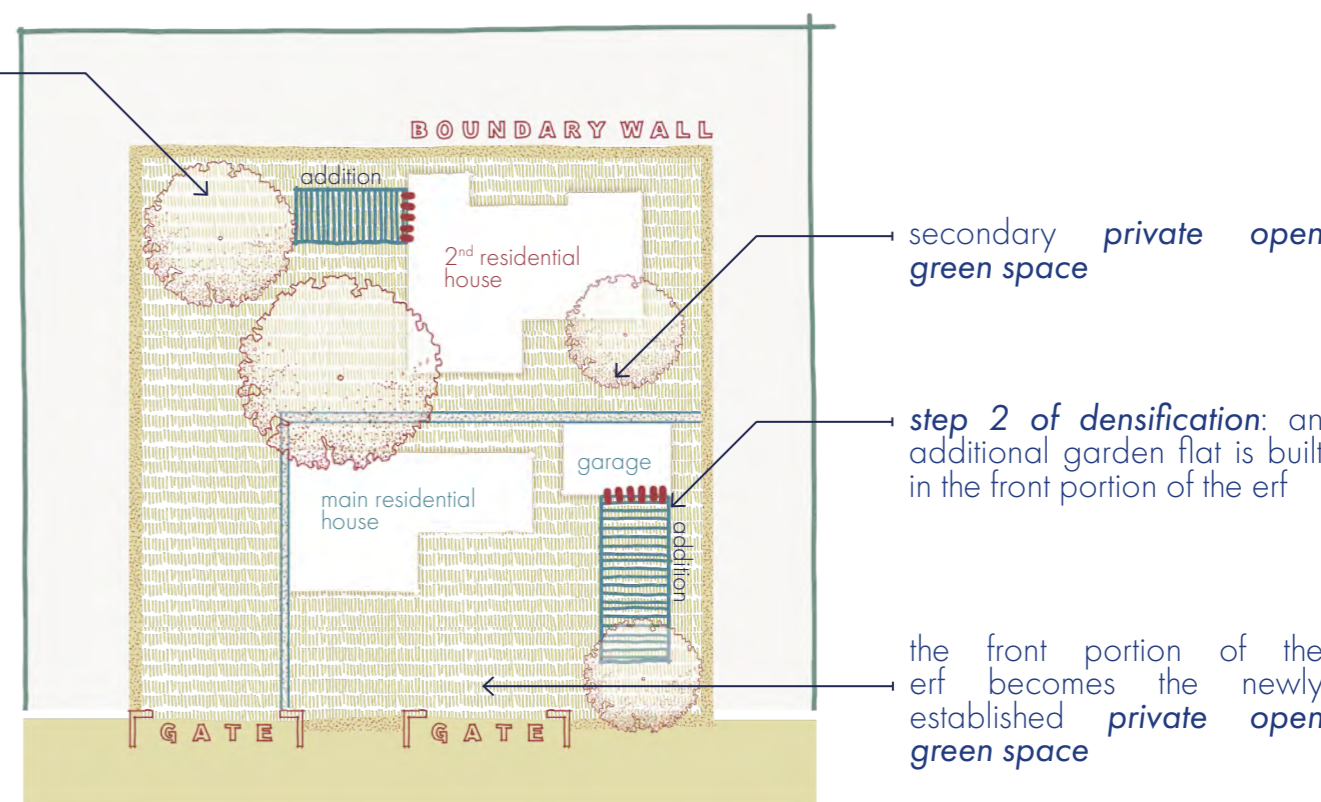
house in front portion of erf + external garage

this type of erf configuration, still typical during the setting out of the suburb during the early colonial neighbourhood planning frameworks, represents the smaller house erf configuration.



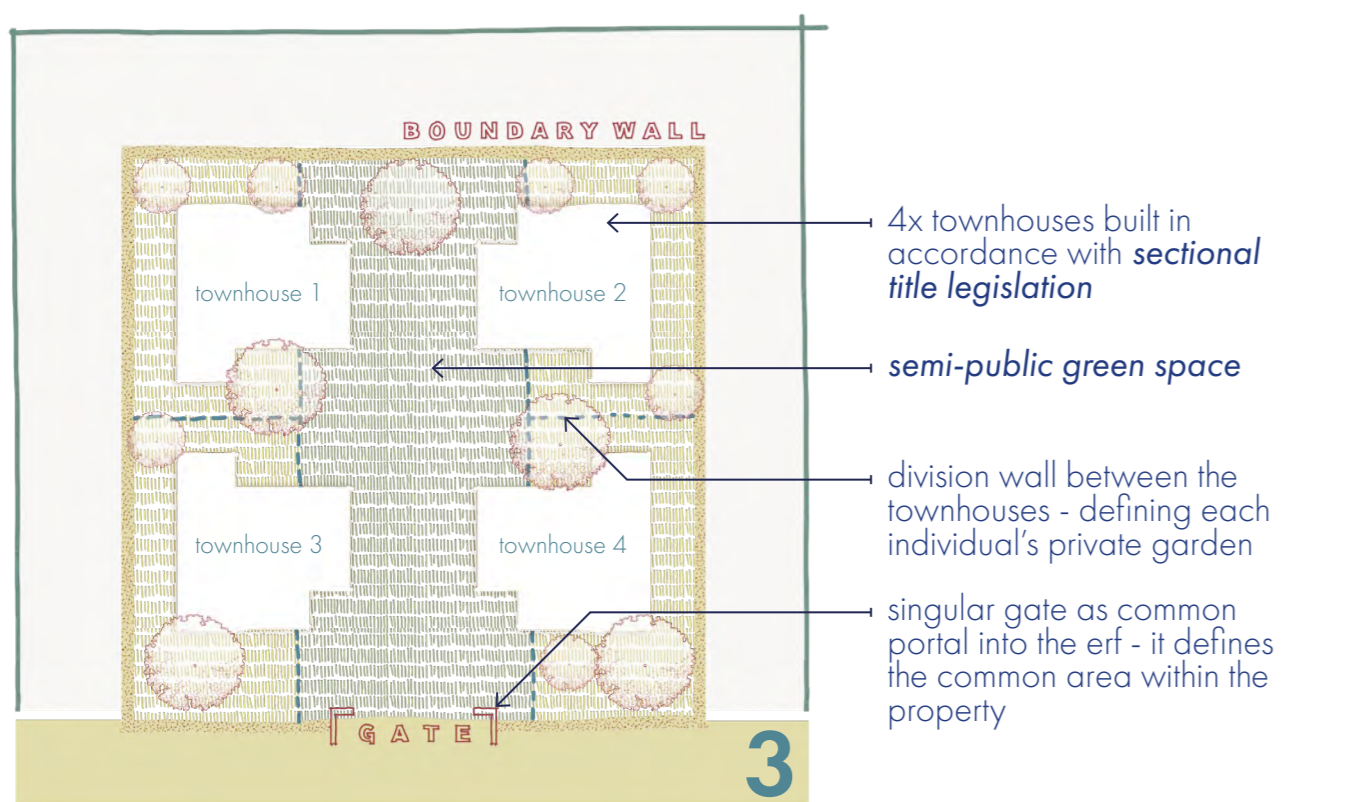
SCENARIO 2  
free-standing solo house reconfigured

during densification process and the increased need for affordable housing, erven were subdivided to accommodate two independent houses



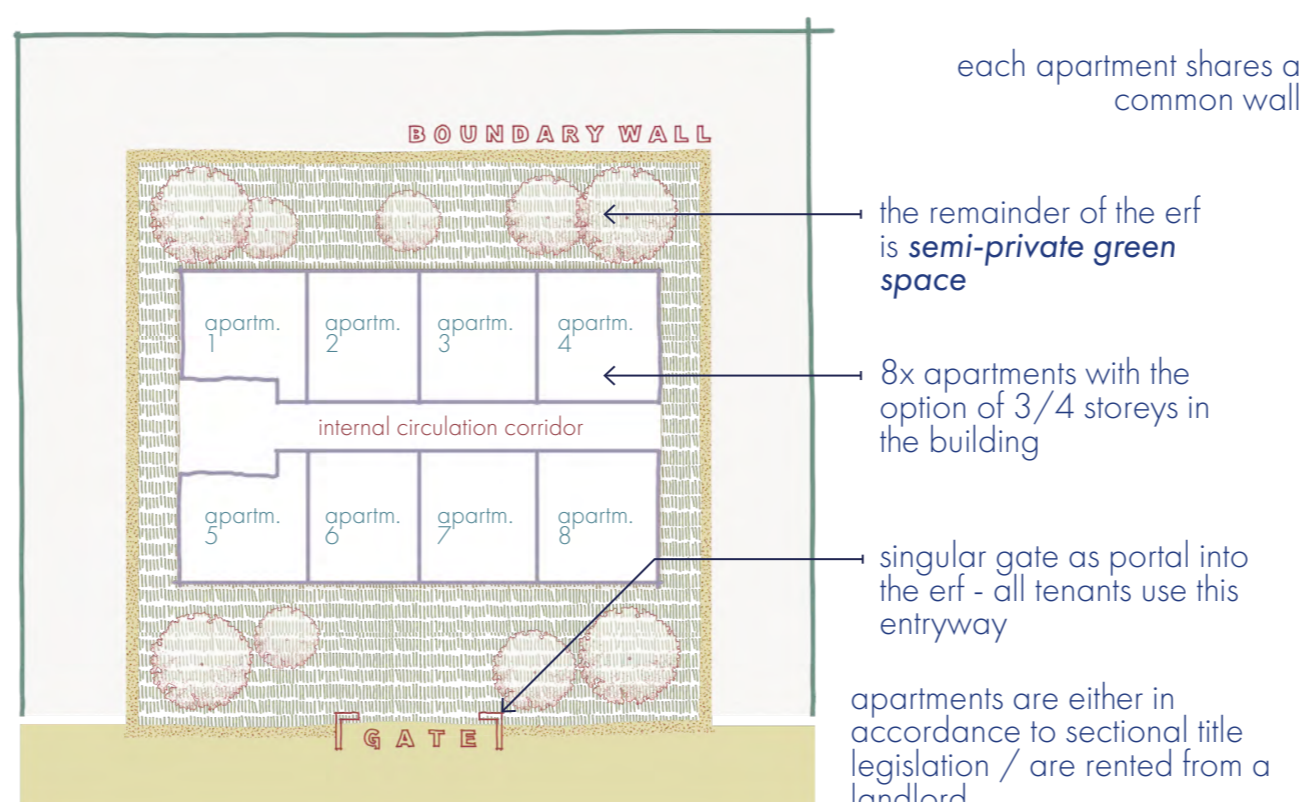
SCENARIO 2  
free-standing solo house reconfigured

once the two independent houses are established, further densification occurs.



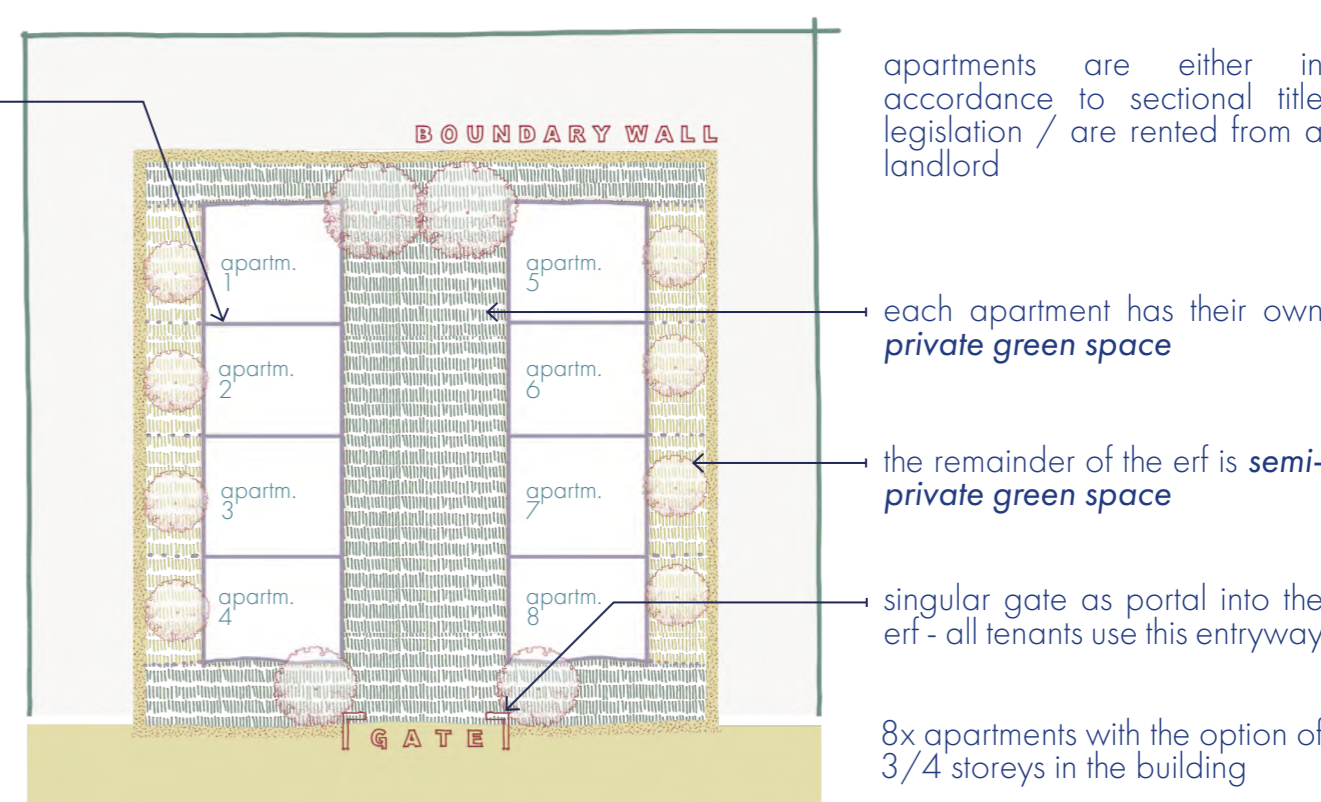
SCENARIO 3  
tabula rasa effect - 4x townhouses

sectional title property division within the erf itself & defined semi-public green space



SCENARIO 3  
tabula rasa effect - apartment block

the erf itself is private & it contains semi-public green space within the commons



SCENARIO 3  
tabula rasa effect - semi-detached

the erf itself is private & it contains semi-public green space within the commons