



BURGERSPANK

Methodist City Mission

TLF

UNISA Little Theatre
Tshwane Secondary School

Potter's House

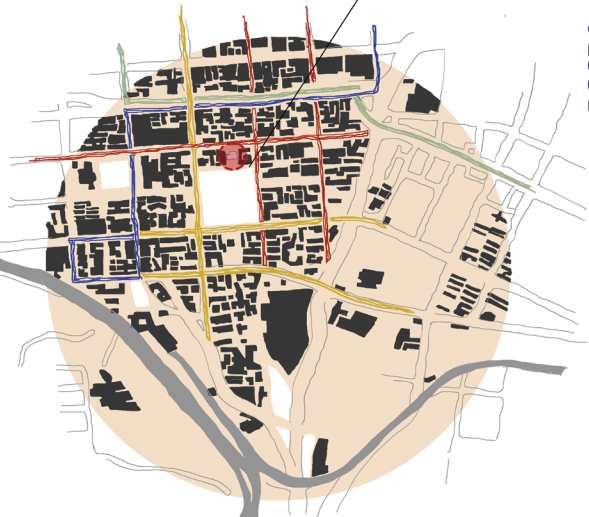
Melrose House Museum

Tshwane
Museum
City Halls

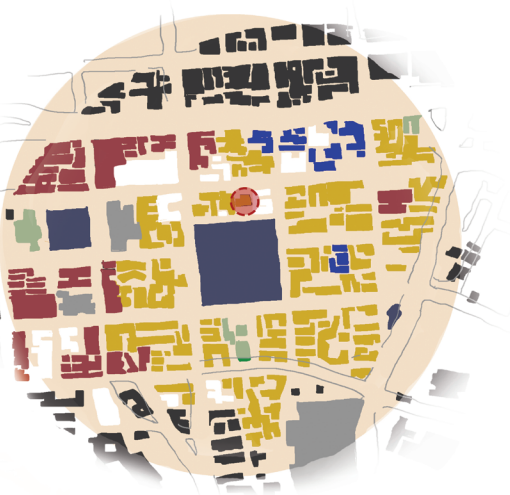
Ditsong

Burgers
Park

Burgers Park Lane



■ BRT Route
 ■ U3/A Class 3/A District Distributor
 ■ BRT (A Re Yeng) Route
 ■ U2 Class 2 Metropolitan Distributor



■ Municipal
 ■ Business 1
 ■ Educational
 ■ Residential 4
■ Special
 ■ Government
 ■ Public Open Space

CULTURAL & EDUCATIONAL SURROUNDS

Situated near many religious, historical, cultural and educational sites

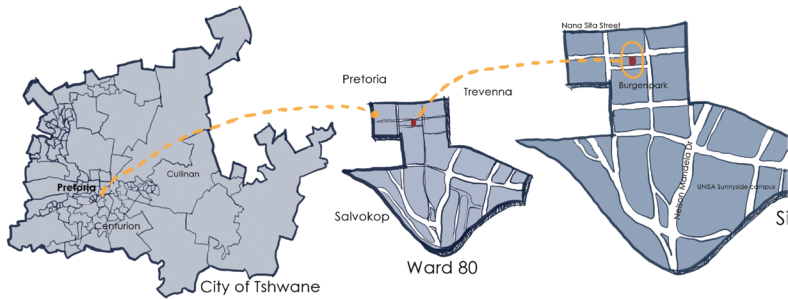
ROADS

Site is centrally located and easily accessible through public transport. Highly trafficked zone. Burgers Park Lane stands in stark contrast to the busy surrounds.

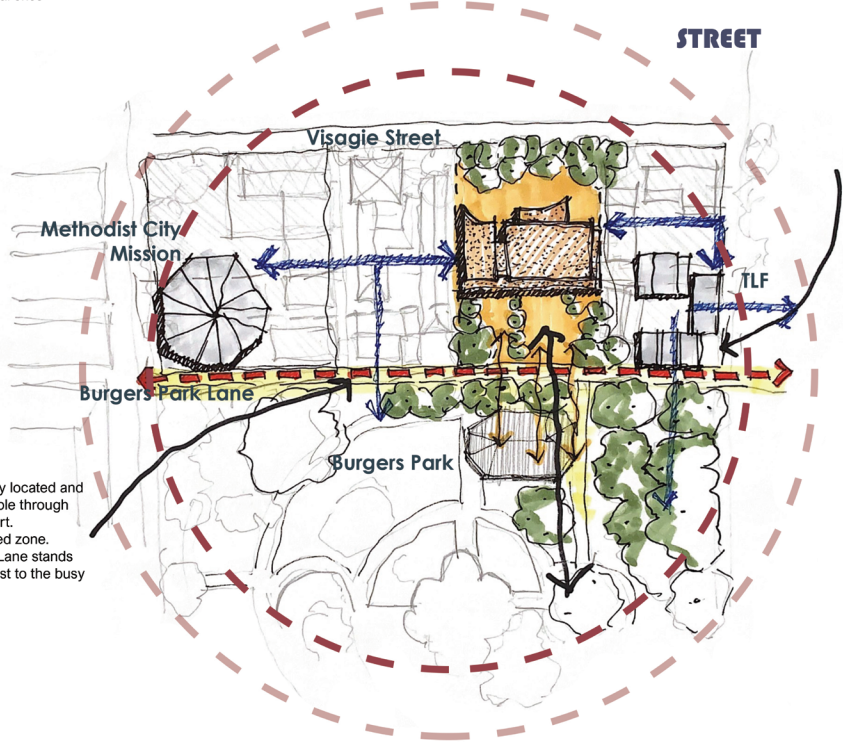
ZONING

Site zoned as Residential 4. Located in the vibrant mixed-use CBD.

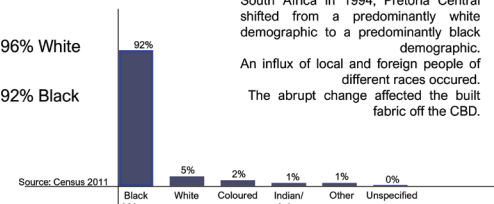
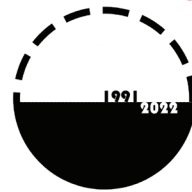
LOCATION



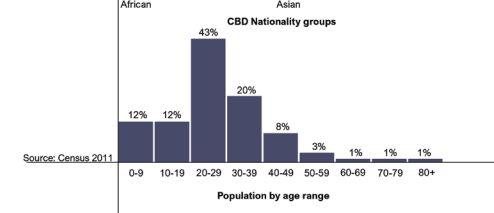
STREET



DEMOGRAPHICS



Since the formation of a democratic South Africa in 1994, Pretoria Central shifted from a predominantly white demographic to a predominantly black demographic. An influx of local and foreign people of different races occurred. The abrupt change affected the built fabric off the CBD.



POLICY SUPPORT

Tshwane Inner City Development Strategy (ICDS)

1. Tshwane as Cultural City (developing a tourism niche)
2. Tshwane as Capital City (increased quality of CBD)
3. Tshwane as Investment Node (enticing environment)

BURGERS PARK



CONTEXT ANALYSIS

HERITAGE MANAGEMENT

Urban heritage is seen as "... a mindset, and understanding of the city, or part of the city, as an outcome of natural cultural and socio-economic processes that construct it spatially, temporally, and experientially... [I]ts usefulness resides in the notion that it incorporates capacity for change"

- UNESCO (Clarke & Kuijpers, 2015)

then now

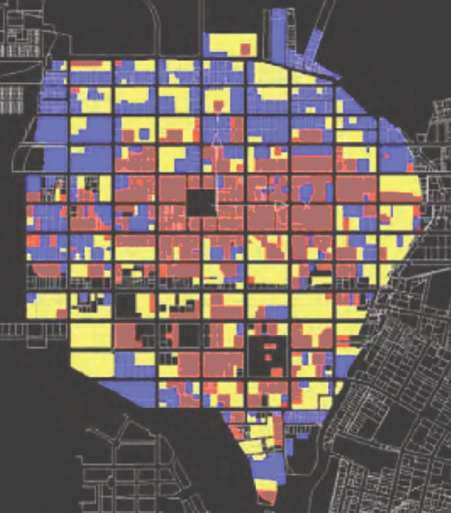
Heritage management =
monument focused
preservation of static tangibles
intolerance to change

No change = No development

Human nature + cities = inherently changing

Focus shifted to socio-economic needs of
community (Swart, 2010)

CBD HISTORAL MAPPING



(Clarke & Corten, 2011)

■ Contributing ■ Neutral ■ Disturbing

PTA CBD HERITAGE



39% of Pretoria CBD buildings are heritage structures

Only 19 are listed

Reasons:

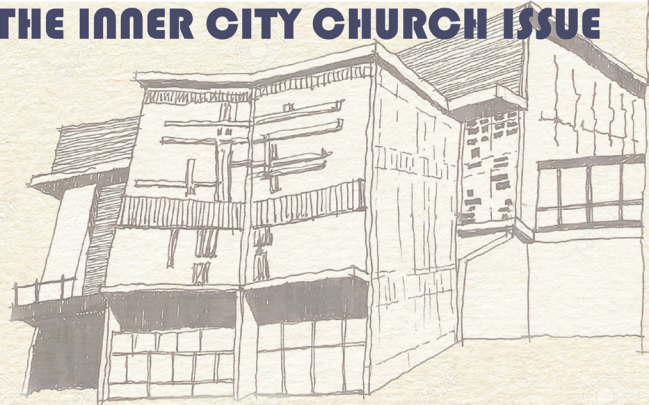
- Mostly Modernist [misunderstood & under-valued]
- Infrastructural decay due to social and economic decline
- Decentralization

(Donaldson, 2011)

THE INNER CITY CHURCH ISSUE

- Mono-functional & underutilized church spaces -
- Limited interaction of church buildings with surrounding context -
- Static infrastructure unable to adapt to programme changes -
- Lack of contribution to public spaces in city -
- Limited integration between church | housing provision | community facilities -
- Lack of green space as part of church facilities -
- Church buildings as static objects in the landscape -
- Lack of social involvement in church buildings -

(Swart, 2010)



DEEPEDED FACADES



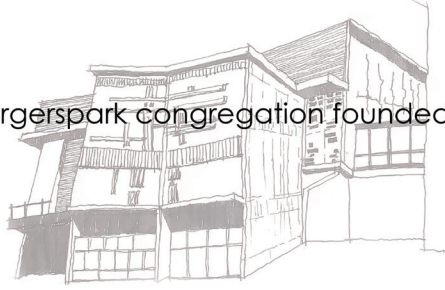
SURROUNDING MODERNIST FABRIC

MASSIVE CONCRETE STRUCTURES



HERITAGE CONTEXT

Burgerspark congregation founded



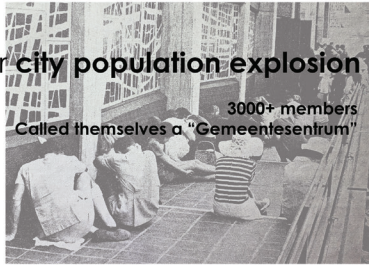
19
52

Procurement of "Surrey Villa" site



19
54

Inner city population explosion



3000+ members
Called themselves a "Gemeentesentrum"

19
61

Foundations are dug



19
68

Burgerspark is opened

Brought a **dynamic revival** in the inner city religious structure.
Served mainly government employees and students.
Church as reprieve in the materialistic city.
Dynamic community.
Bible study Wednesdays - 200 people.
Homeless issue in Burgers Park.

Speeches, games nights,
classes and actual conversations, film viewings,
badminton, worship evenings.

19
69

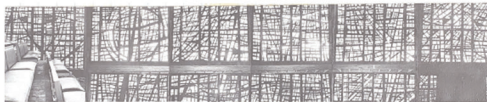
6 Inner city churches conglomerated

Burgerspark sold to Doxa Deo church



19
90's

Curtains introduced over windows



20
20's

Concrete elements
painted multi-colour



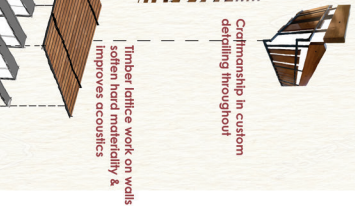
20
23



BUILDING TIMELINE

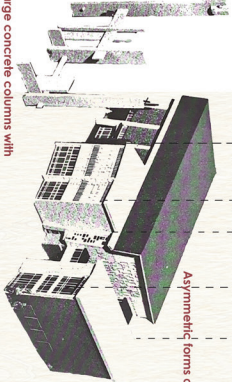
HERITAGE VALUE

ORIGINAL LAYOUT & USE

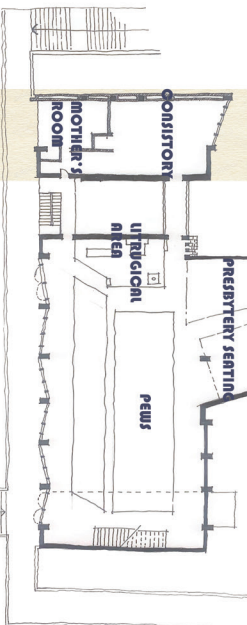


Structure timber ceilings, concrete structure & brick walls in perfect condition

Explosive brickwork on facades - attention to detail on roof



Large concrete columns with subtle cross symbolism serve as entrance into holy space



LIBRARY

CONSULT ROOMS

CHAPEL

A large dalle de verre windows designed by Leo Theron. Depicts a theme "from Darkness to Light". Each panel depicts a festive time in the liturgical year. 5 tons coloured glass imported from Saint Gobain, France. Biggest dalle de verre work in any church in South Africa.

Spiritual value: transforms everyday light into the inner light of the Spirit. Creates feeling of meditation and receptiveness for the Word.

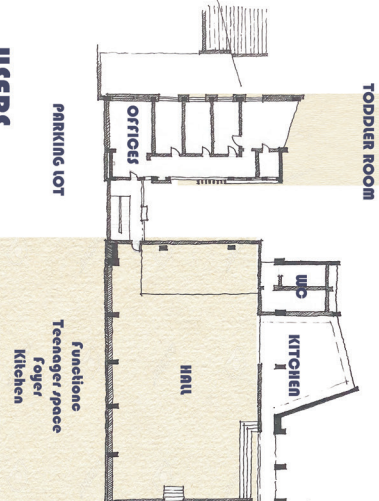
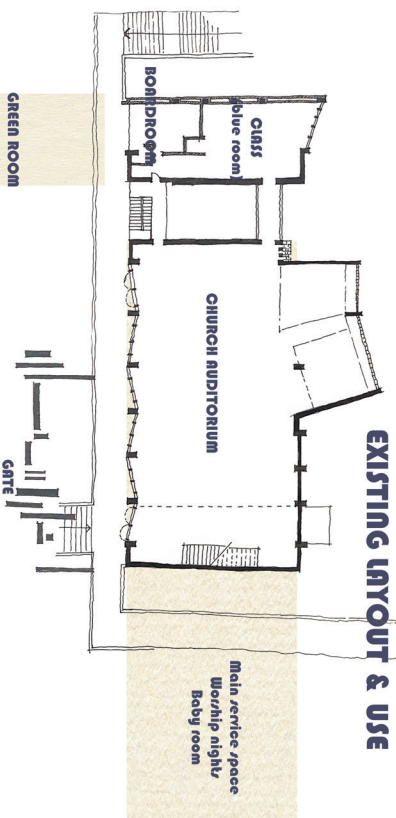
FESTIVE PERIOD	COLOR	LITURGICAL SYMBOL
1. The Passion of Christ	Purple	Crosses and cup
2. Easter	Blue	Circle
3. Ascension	Green	Arch and dove
4. Pentecost	Orange	Cross and flames
5. Christmas	Yellow	Star
6. Second Advent	White	Morning Star

ORIGINAL CONCEPT

A city congregation in a city building. In a space that is not designed for church, we bring a reprieve for the searching soul. Stepping through the massive concrete expressive congregational space through small entrances - emphasizing community unity in Christ. The liturgical area and preaching of the Word was given permanent prominence inside. Beauty is symbolically manifested to urban exterior in an understated manner.



EXISTING LAYOUT & USE



USERS



White Afrikaners
Burgerspark congregation member

USERS



T1 / MOTHER



CHURCH GOER

Tshwane leadership foundation, uses container and classrooms occasionally. Parents enlist children to Doxa Kids during service.

Black inner city Doxa Deo community member.

HERITAGE CONDITION



EXISTING VALUE

Historical value	Social value	Technical value	Spiritual value
<ul style="list-style-type: none"> - Excellent example of Pretoria Regionalism - Relation to historic Burgers Park - Brought dynamic revival in 1980's CBD - Memory of Afrikaner prosperity under Apartheid 	<ul style="list-style-type: none"> - Valuable to Doxa Deo congregation and temporary students 	<ul style="list-style-type: none"> - Quality of construction and craftsmanship - Dalle de verre windows by Leo Theron 	<ul style="list-style-type: none"> - Spiritual value to congregation - Utilized for worship nights



NG BURGERSPARK ORIGINAL SITE EXISTING SITE DOXA DEO TSHUWANE CENTRAL

HERITAGE VALUE MATRIX

SITE NAME: Dutch Reformed Church Burgerspark

REFERENCE NUMBER: 04/NGK

	AGE/RARITY	HISTORICAL/ ARCHITECTURAL	ARTISTIC/ AESTHETIC	COMMEMORATIVE	USE/ECONOMIC	SOCIAL	NOSTALGIC	TECHNICAL	SPIRITUAL
SURROUNDINGS	Surrounding CBD showcases signs of decay as well as new developments; layers of the ages.	Modernist character of area emphasizes importance of conservation of architectural styles.		Area stands as evidence of radical development of Pretoria under Nationalist rule in 1900's.	Area serves wide range of economic functions – institutional, educational, commercial.	Residential nature of area provides market for religious institutions and ensure constant inhabitation; street has value for homeless community as churches provide for them.	Nostalgic value for previous demographic group that resided in inner city.	Quality of construction and craftsmanship evident in condition of modernist buildings.	City block houses many churches, serving the street, area and wider Pretoria.
SITE		Relation to neighbouring Burgers Park – Pretoria's first botanical garden.			Container office on site used as lettable space for additional income; site well located within CBD; open space available for reuse.	Although no dedicated space here for, site utilized as social space for students and employees of church.			Large concrete columns in cross form serve as portal into holy site.
STRUCTURE	Design was radical for Dutch reformed Church at the time.	Initial church brought dynamic revival in inner city religion, moving from stoic religious practices to more modern.	Asymmetrical nature of building creates sense of movement in solid structure.	Separate consistory wing speaks of past use as NG church; now used as classrooms.	Hall rentable for events; all areas still in use, although programmes somewhat changed.	Visible accessibility in large ramp running outside. Building reintegrated into context to compliment current community identity.	Evokes strong memories for previous congregation (including students, ministers, residents) of previous success of church.	Building placed back from busy Visagie Street with thick concrete wall to north to block out noise.	Doxa Deo church serves as spiritual reprieve for their congregation.
SPACE PLAN	Main church space unusually placed on second level above hall. Entrances to side – usually entrance placed opposite liturgical area.	Presbytery seating was located in wing of L-shaped plan, distinctly removed from congregation as was custom in early modernist churches.		Interior space plan speaks of organization of programmes in previous church – now adapted to resemble auditorium.	Interior space adapted to form auditorium space, with stage, moveable seating and instrumental space – ensuring use value in current Doxa Deo.	Plan adapted to form less rigid organization than previous NG church, accommodating for modern congregation.	Remnants of organ, pews, liturgical area, etc. invoke memories for previous congregation of NG church.	Detail and craftsmanship of original design evident throughout, though compromised in certain areas.	Plan adapted to accommodate new form of spirituality now present in church (more praise and worship oriented).
SKIN	Rare intricate brickwork on facades; original skin elements painted over in some instances.	Thick concrete/masonry skin on northern façade for acoustic measures.	<i>Dalle de verre</i> windows spanning south wall serve as massive publicly accessible art.		Durable materiality ensures low maintenance.			Large, stereotomic skin softened by crafted brickwork and <i>dalle de verre</i> windows.	Contrast of solid/window skins create an intimate/ethereal space.
SERVICE					Ventilation and lighting through structure separated to simplify operation of each.			Timber lattice work over concrete structure intended to improve acoustics – marginally effective.	Ample diffused natural lighting through <i>dalle de verre</i> windows now obsolete due to heavy curtains and fluorescent lighting.
MATERIALITY	5 tons coloured glass imported from France. Most floor finishes replaced. Wooden parquet flooring painted over; various concrete elements painted over; northern <i>dalle de verre</i> window painted over; carpets over original slate tiling. Layers of renovations evident.		Coloured windows create play of light on remaining leather pews.		Structure in concrete and masonry and timber lattice work throughout remains unchanged and in good condition.			Carefully crafted materiality now replaced with mass-produced products, increasing value of remaining materiality.	Materials adding to spirituality of space (windows & natural, honest materiality of furniture and floors) are being removed/changed.
FURNISHING	New chairs, stage and technical equipment stand in contrast to original structure.							Unique, crafted casework (like pulpit and pews) removed, decreasing technical quality of interior. Timber panel work behind pulpit removed, decreasing acoustics.	
SYMBOLISM/ ORNAMENTATION	Original symbolic elements (in brass and concrete) now in background of new Doxa Deo banners and signage.		Leo Theron windows depict theme "From darkness to light," through representing 5 festive events of liturgical year.					Cross work in masonry, concrete and brass speaks to level of craft in original design.	Progression in lightness of windows towards front of space emphasized liturgical area; northern window (now painted over) bathed important area in light.
LIGHTING	New fluorescent lighting stands in contrast to original artistic windows; original pendants removed.		Coloured windows serve greatest artistic value in building, both in church space and consistory wing.		Current artificial lighting serves function of space as auditorium.			<i>Dalle de verre</i> windows one of Leo Theron's biggest church works, who pioneered method in South Africa.	Ethereal feel of <i>dalle de verre</i> windows obstructed by paint, curtains, and fluorescent lighting.

STATEMENT OF SIGNIFICANCE

The church sits right opposite the historic Burgers Park. The building was designed by well-known church architect Daan Kesting. His design is a beautiful example of Pretoria Regionalism. The building structure remains intact, a testimony to the quality of construction, craftsmanship and materiality. The massive *dalle de verre* works by Leo Theron is precious and the biggest of his 210 church works. However, the interior has seen many unsuccessful alterations. The building is of social significance as a precedent for post-apartheid demographic changes and the result thereof on the built environment. The building managed to shift from a conservative Afrikaans church to a modern church serving the black community, thus retaining its contextual significance.

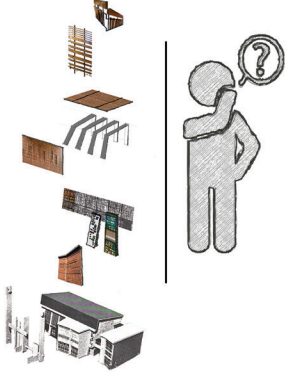
HERITAGE VALUE MATRIX

MAIN ISSUES

Heritage. not Use

HERITAGE DISCOURSE

Disconnect between expert & user value of modernist spaces



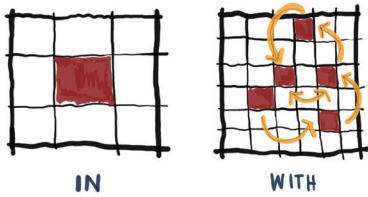
CONTEXTUAL

Pretoria CBD Heritage is surviving, not thriving



SOCIAL

Increasing secular society = church buildings isolated from large portion of society

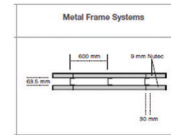


SITE

Underutilized precinct
Interior was gutted
Unawareness & disregard for architectural value

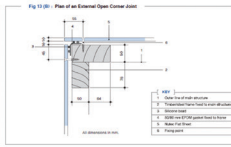
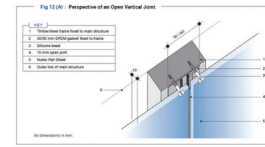
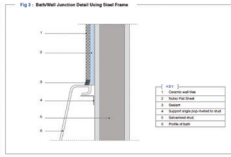
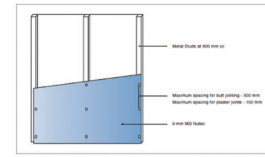


Detail 5 - Nutec wall system



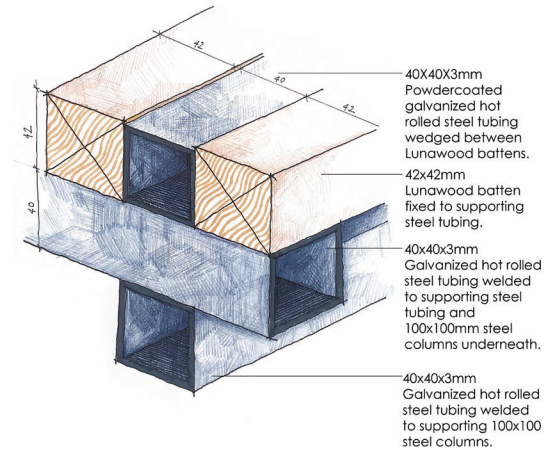
Exterior wall systems:

10mm Nutec Plain High Density Flat sheet construction as used in Prefabricated housing, fixed to steel framing with 35x5.5mm self tapping countersunk screws.



Note: Images obtained from Nutec website (2023)

Detail 6 - Terrace structure



Detail 8 - Marley SolteQ PV Solar Roof Tile



Output capacity per tile	29,58 Wp (Watt Peak)
Outputm2	147,9 Wp (5 x Marley SolteQ Tiles)
Cell Material	Monocrystalline Silicon
Cell Size	156 x 156 (6 per tile)
Module Dimensions	420 x 580mm
Weight per PV Tile	approx. 4,125kg
Weight per m2	approx. 14kg
Effective cell angle range	3 to 90 degrees

Note: Issues surrounding south facing angle and shade - 10-12% efficiency will be lost. However, due to higher efficiency of Marley Panels at lower light levels and still generating in shaded areas, makes it perfect solution for properties that do not offer ideal circumstances. If roof pitch is not ideal (26°) will only lose 1-1.5% of max solar output possible. To compensate for lower pitch, number of tiles can be increased.

MAIA Project question

How can interior architecture be used to expand the meaning of modernist churches by interpreting an adaptive reuse strategy to create an inclusive, community building environment that stimulates inner city revival?

01 Contextual question

How can the reintroduction of the Burgerspark church to its current context create a communal space promoting collective identity, thus increasing the value of the built fabric in the inner city?

02 Theory question

How can the theory of adaptive reuse in historical buildings be interpreted in tangible elements to expand the intangible meanings to relate to current day issues?

03 Design question

How can theories of adaptive reuse be implemented in tangible design elements to support a new narrative and meaning and any future narratives that might arise, ensuring longevity and resilience of the historic building in the changing city?



VISION

- Community development
- Collective identity
- Longevity & resilience

To move Burgerspark from church in the city to church with the city. A resilient entity as conservation for the present, not the past.

AIMS

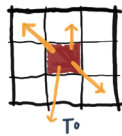
1. Remove disconnect between modernist architecture and its inhabitants, through reintroducing style as heritage worth preserving
2. Determine the inherent intangible values of modernist interiors and methods for preserving these in contemporary interior architecture
3. Produce a spatial model that creates meaningful and resilient urban spaces in the Pretoria CBD
4. Create an adaptable, humane interior within a harsh modernist environment
5. Create a precedent mixed-use church typology for inner city renewal and community development
6. Develop an adaptive reuse strategy for the DRC Burgerspark to ensure continuous use, through addressing new issues in a dated structure

The Urban Church can reside in its context in three ways:



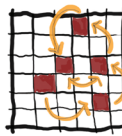
IN

IN THE CITY:
Modernist Afrikaner churches are currently in the city - unrelated to their urban fabric and community



TO

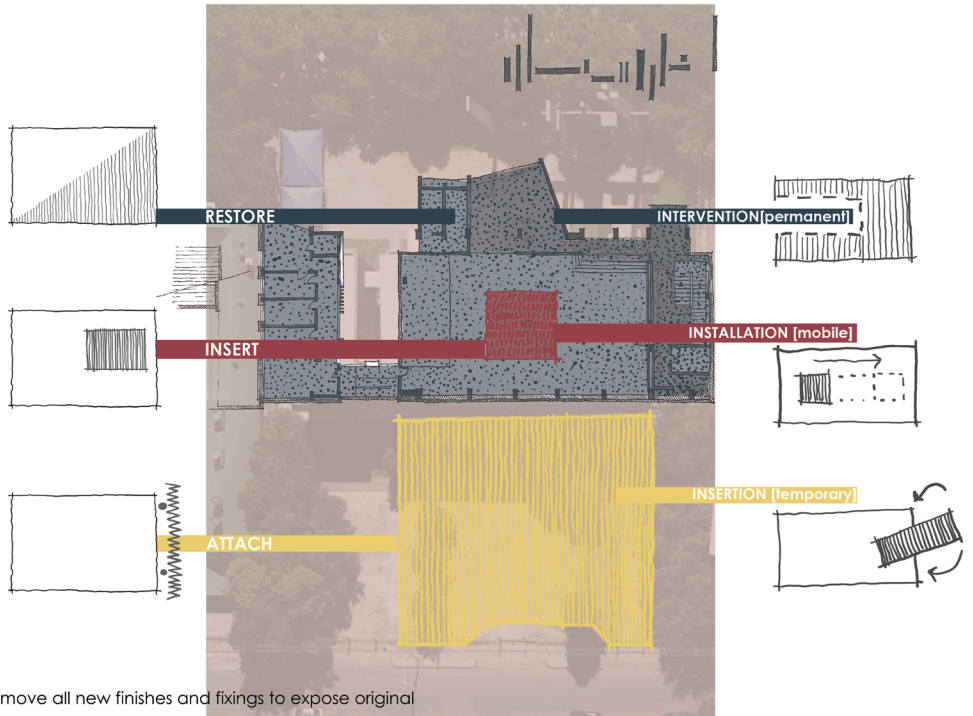
TO THE CITY:
Providing solutions to issues in the city, but not addressing the causes



WITH

WITH THE CITY:
Considering urban issues in conjunction to the contributions of the community

HERITAGE STRATEGY



RESTORATION STRATEGY

Remove all new finishes and fixings to expose original



AIMS & OBJECTIVES

"Conservation is rather, a present day interpretation of the past, and as such belongs to the present, and not to the past"

- Welch, 2011

HISTORY

How we understand the past (Swart, 2022)

HERITAGE

Resultant inheritance from history - do we attach value to it or not?

CONSERVATION

About managing change
Alteration
NOT restoration

Conservation || Restoration

ALTERATION

Mediation between preservation & demolition
Buildings are constantly changing physically, technically, programmatically, culturally - Alteration becomes main task of architecture.

MODERNIST CONSERVATION ISSUES

"Protecting the not yet loved"

- Lack of understanding & recognition
- Absence of determined methodological approach
- Issues with repair vs replacements
- Shortcomings in sustainability & adaptability
- Lack of public participation

(Macdonald (2013:5)

1ST ORDER & 2ND ORDER MEANING

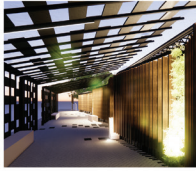
How people use space (purpose)
Matter
Tangible: physical built structures
Whichever physical method most suited

(Konigk, 2015)

Associations and connotations
Meaning
Intangible: socio-cultural, historical, economic values
Constantly changing values of context

INTANGIBLE HERITAGE

Forms the social arm of conservation - it emphasizes the importance of immaterial, dynamic elements of conservation like people, values, and crafts (Meurs, 2016)



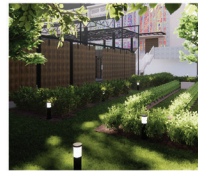
Shading & Water points



Structure gradually lowers from the existing building



Direct entrance to the church



Community garden that produces for events catering



Communal gathering space



Library & work spaces

1ST ORDER

2ND ORDER

Street becomes an extension of the church - the church has no walls to the exterior street

The modernist monster is brought down to the street, introducing the site at a human scale

Strong sense of rhythm towards the holy space as a nod to classic church colonnades

Sense of agency to scholars and skills development

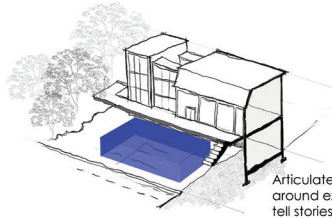
An extension of the church that is open to the public and promotes community gatherings

Space becomes an extension of the home in the dense inner city

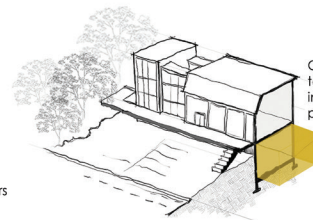
ADAPTIVE REUSE STRATEGIES

Start at existing object to arrive at mode of existence in keeping with that object (Clarke, 2019)

Sharr's 2 tactics of conspicuously dealing with past:

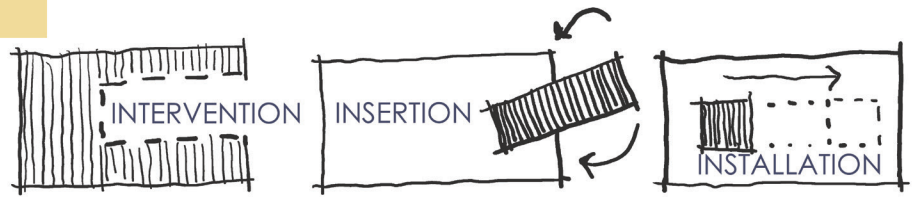


Articulate new layer around existing - layers tell stories

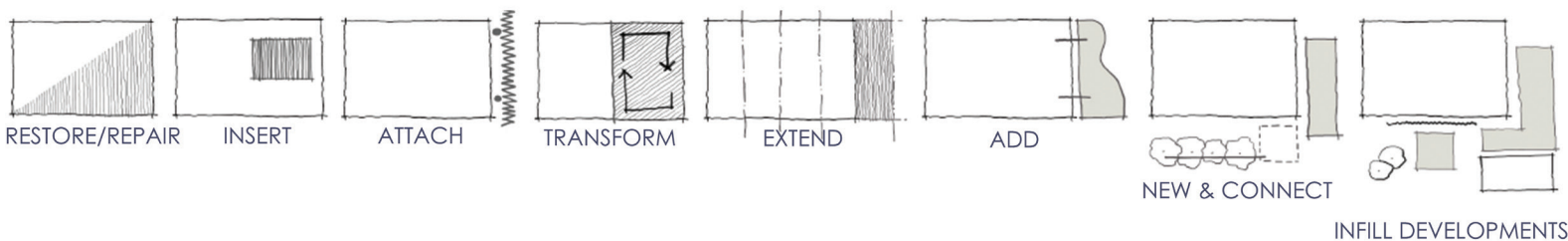


Create worlds within to dislocate inhabitants from site prompts reflection

Brooker & Stone's (2014) design principles for remodelling existing buildings:



Swart's (2022) heritage proximities:

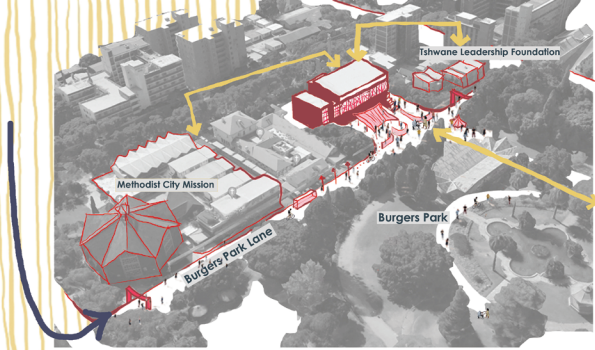


HERITAGE DOCUMENTATION

Documents informing the analysis process

NHRA | The Burra Charter (2013) | PRAH-G Assessments | Plekke en Geboue (Le Roux, 1990) | Heritage Value Matrix (Clarke & Kuijpers, 2017) | Beginsels van Gereformeerde Kerkbou (Koorts, 1974) | Afrikaans Protestantse Kerkbou (Kesting, 1978)

THEORETICAL FRAMEWORK



CONTEXTUAL VALUE

The Burgerspark site is to become an **activation node** on the quiet Burgers Park Lane, attracting external interest.

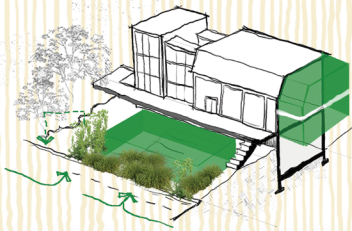
As connector between the Methodist City Mission and the TLF, the religious institutions will serve the street in front.

Burgerspark will serve as an active community centre, as an extension of the home for the surrounding community.

PROPOSED PROGRAMME

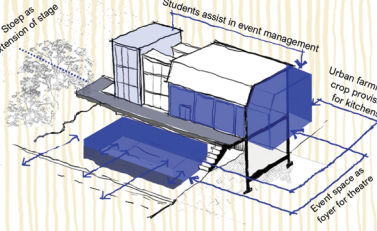
A mixed-use precinct as a vessel for community building in Pretoria Central, ensuring activation of an old Modernist building on a human scale

DAYTIME COMMUNITY CENTRE



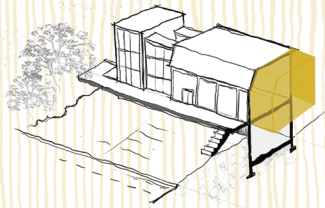
Extension of Burgers Park
Outdoor meeting space
Kiosk
Library
Flexible workspaces

WEEKEND/NIGHTTIME EVENT SPACE

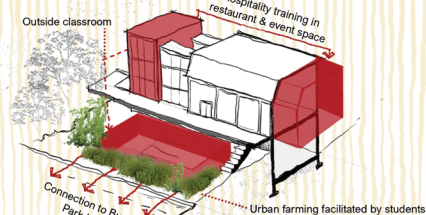


Outdoor event space
Theatre/Auditorium

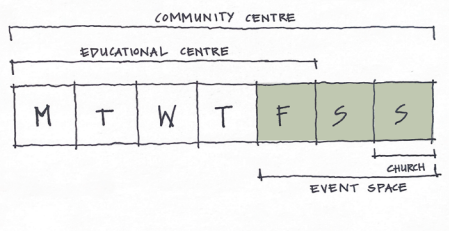
CHURCH



EDUCATION CENTRE



Daily childcare
Educational courses in botany and hospitality



USERS

PARK/STREET DWELLER



Burgers Park / street dweller passing by. Dynamic, nomadic movements. Need green space, shading, water, seating.

TLF / MOTHER



Adult Church/NGO worker working within the street and area with the need for congregation, workshop and event spaces

NEARBY RESIDENT/STUDENT



Adult / Teen Inner city dweller with need for green space and an extension of apartment. Source of knowledge, internet and workspace needed

TEACHER/STUDENT



Adult / Child/Teen A practice-oriented education beyond conventional syllabus in the inner city. Working within a holistic environment, with broader site operations

CHURCH GOER

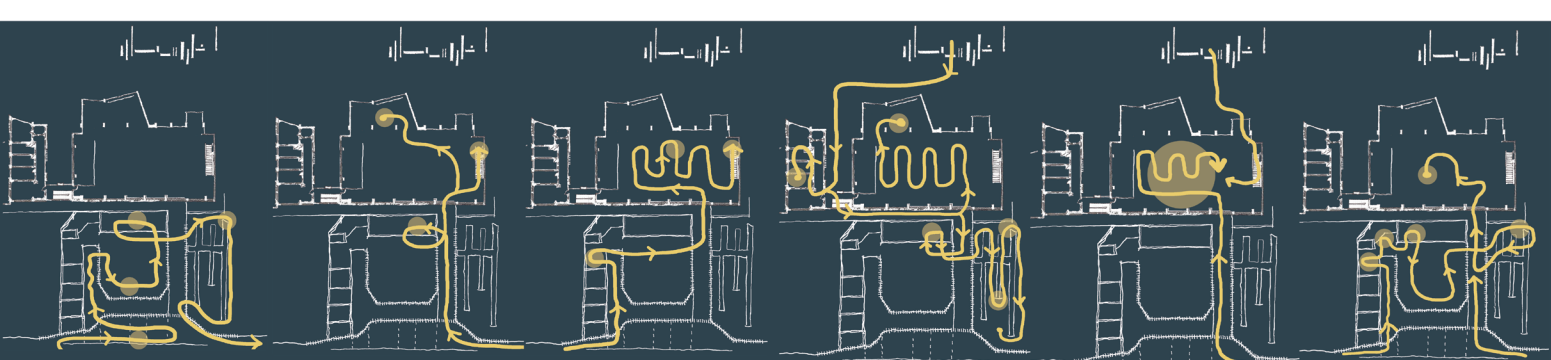


Adult Searching for a spiritual reprieve in the city bustle, a sense of belonging and a platform for community engagement

EVENT VISITOR



Adult Exterior visitor (outside Pretoria Central) travelling to cultural event / restaurant Would otherwise not have visited CBD Possible external investors



PROGRAMMES & USERS

01. LIBRARY, MUSEUM & COMMUNITY CENTER 'DE PETRUS'

LOCATION: Vught, Netherlands ARCHITECT: Molenaar, Bol & van Dillen YEAR: 2018

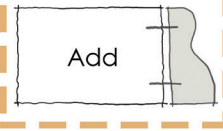
DESIGN PRECEDENT



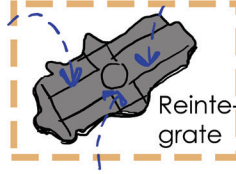
A 1884 church was renovated to accommodate a library, museum, bar and shops. Large open space open to public. New mezzanine floor extends outside to form roof of restaurant. Moveable bookshelves allow floor space for large events.



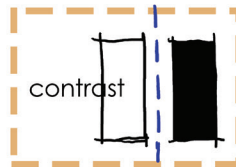
heritage strategy



intangible



material strategy



02. PATRIMONIUM SCHOOL

LOCATION: Amsterdam, Netherlands ARCHITECT: C. De geus YEAR: 2010

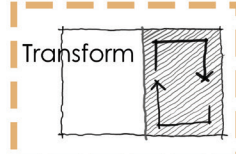
MATERIALITY PRECEDENT



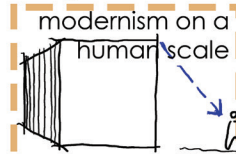
A school for Lower Technical Studies, modelled after Le Corbusier's Unite de Habitation. The vacant building was threatened with demolition. It was restored to its original state, still functioning as a school. Restored to original state by removing new finishes to expose materials.

Art
Texture
Colour

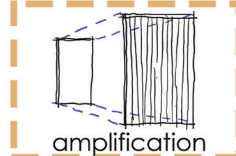
heritage strategy



intangible



material strategy



03. 012 CENTRAL

LOCATION: Pretoria CBD ARCHITECT: dhk Architects YEAR: 2014

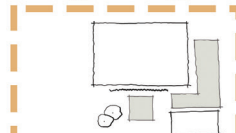
PROGRAMMATIC PRECEDENT



The 012 precinct is one of the last remainders of industrial heritage in the CBD. The mixed-use events space can host conferences, shows, markets, etc. Part of wider inner city revival scheme. Catalyst for new activity. Very light renovation touch.

Greenery
Public Art
Sense of scale

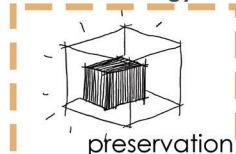
heritage strategy



intangible



material strategy



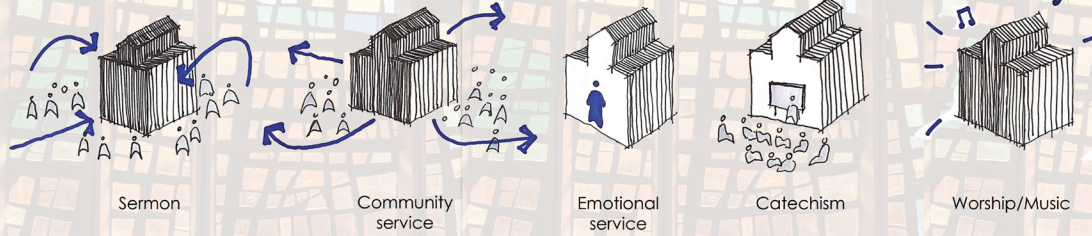
The design will emphasize the universal language experienced and valued by all in modernist church designs – the spiritual experience. This will manifest as a journey through various tangible and intangible thresholds, similar to those present in church layouts. The architecture of light in churches will also be drawn from to enhance the spiritual essence of the spaces.



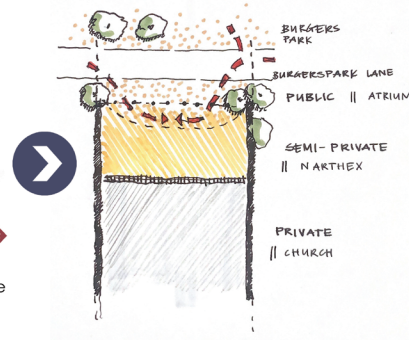
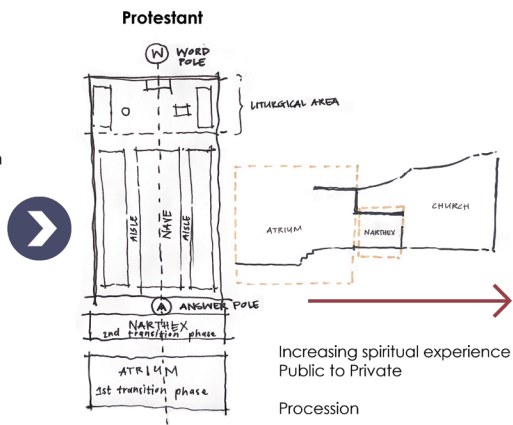
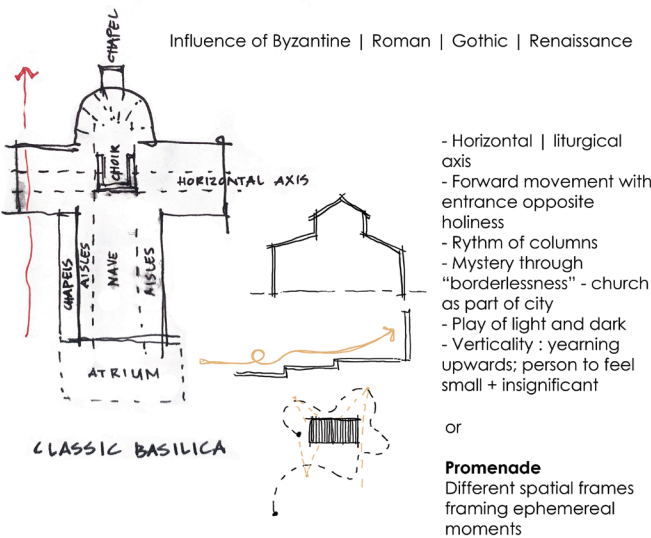
A SPIRITUAL EXPERIENCE



CHURCH "SERVICE"



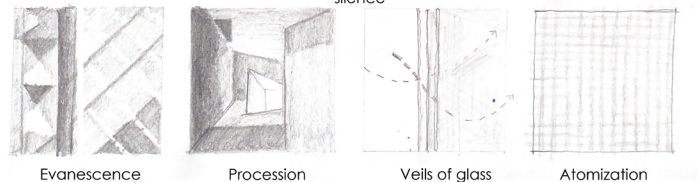
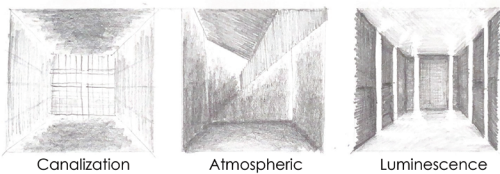
A SERIES OF THRESHOLDS



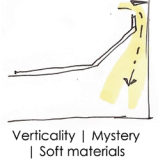
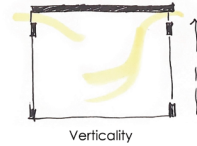
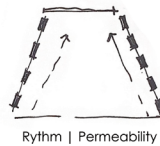
THE ARCHITECTURE OF LIGHT

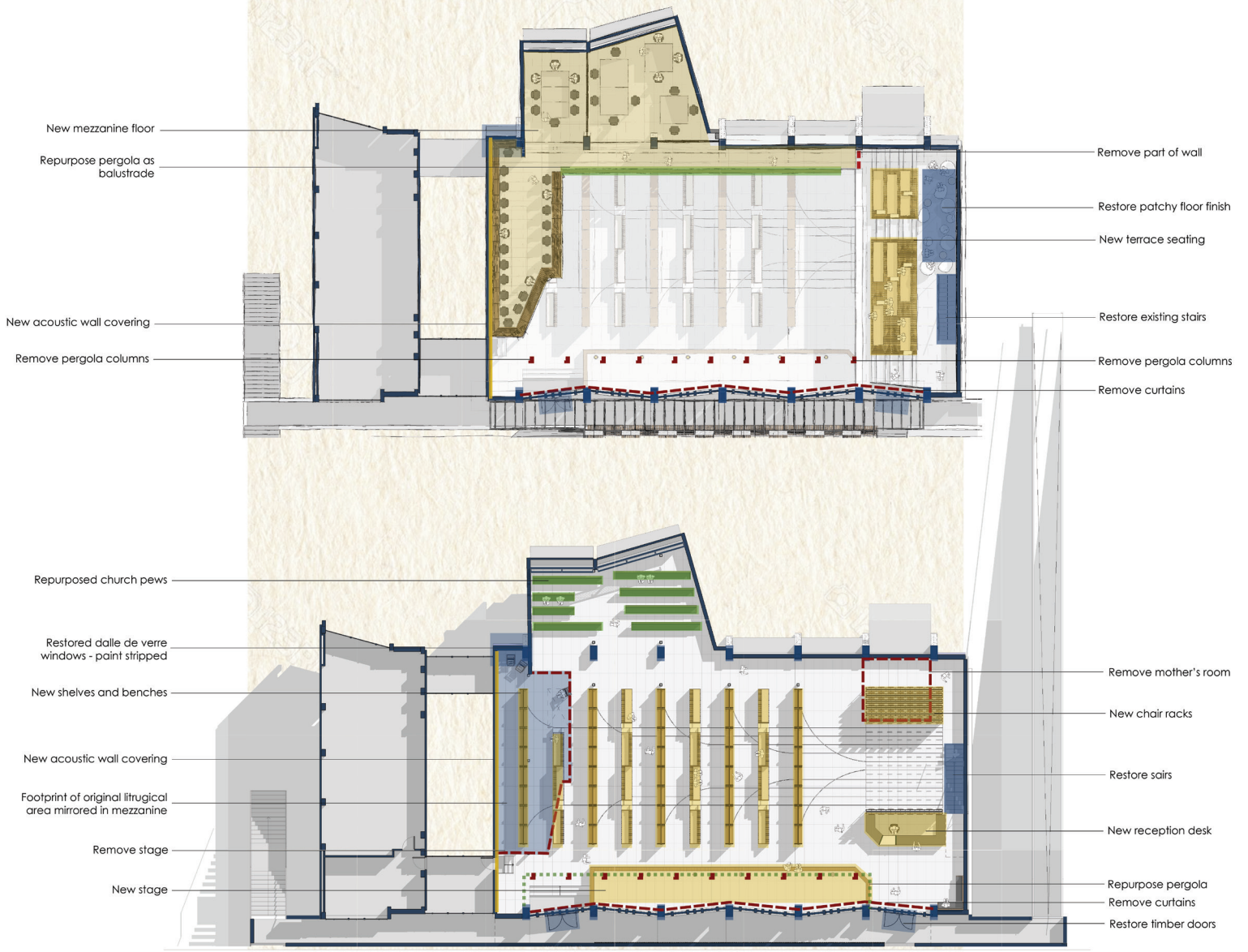
THE ARCHITECTURE OF NATURAL LIGHT

Book by Plumer, H (2009)



IN PROTESTANT CHURCHES





NEW RESTORED REMOVED RECONFIGURED

**FLOOR FINISHES
STAGE
RECEPTION DESK
FURNITURE
ACOUSTIC WALL
STEEL POWDERCOATING
MEZZANINE FLOOR**



**STAIRS
FLOOR FINISHES
GALLERY SLAB
LITURGICAL AREA FOOTPRINT
DOORS
PAINTED NORTH WINDOW**



**CURTAINS
STAGE
SPOTLIGHTS
MOTHER'S ROOM
PERGOLA COLUMNS
PAINT OVER CONCRETE**



**PEWS
PERGOLA**



HERITAGE STRATEGY

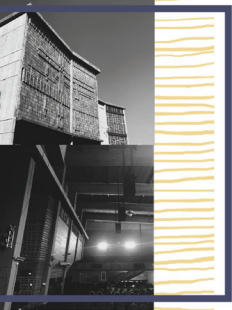
CONSTRUCTION CONCEPT

where the value of modernist design is celebrated

SCULPTURAL OPENINGS



ASYMMETRICAL FORMS



TIMBER LATTICE WORK



DECONSTRUCTIVIST DALLE-DE-VERRE








BRASS DETAILING



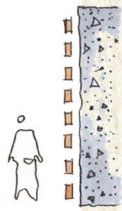
EXISTING INFORMANTS

MATERIAL APPROACH

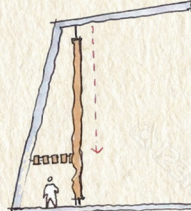
NEW MATERIALS

	PROS	CONS
 <p>Lunawood Thermowood Nordic PEFC-certified Use class 3 - above ground & exposed to weather</p>	<ul style="list-style-type: none"> Continuation of interior materiality Sustainable Linearity & rhythm Lightweight construction 30-year service life 	<ul style="list-style-type: none"> Artificial
 <p>SoliteQ Infinity Slate Tile 600x300x4mm Power generating slate roof tile</p>	<ul style="list-style-type: none"> Solar harvesting Light & easy installation Better performance than conventional solar panels 40-year performance guarantee 	<ul style="list-style-type: none"> Cost Specialist installation
 <p>Natural slate</p>	<ul style="list-style-type: none"> Natural Floor finish of choice in modernist church design Durability Insulation 	<ul style="list-style-type: none"> Cost Weight Limited availability
 <p>Brass</p>	<ul style="list-style-type: none"> Luxurious aesthetic Malleable Recyclable Antimicrobial 	<ul style="list-style-type: none"> Cost Tarnishing Weights Scratch sensitivity
 <p>Powdercoated steel</p>	<ul style="list-style-type: none"> Lightweight construction Prefabrication Durable Flexibility UV Resistance 	<ul style="list-style-type: none"> Initial cost Thermal conductivity Noise transmission Limited span lengths

Honest material & construction



Human-scaled adaptability



Detail & craftsmanship



Celebration of light



T/O Roof

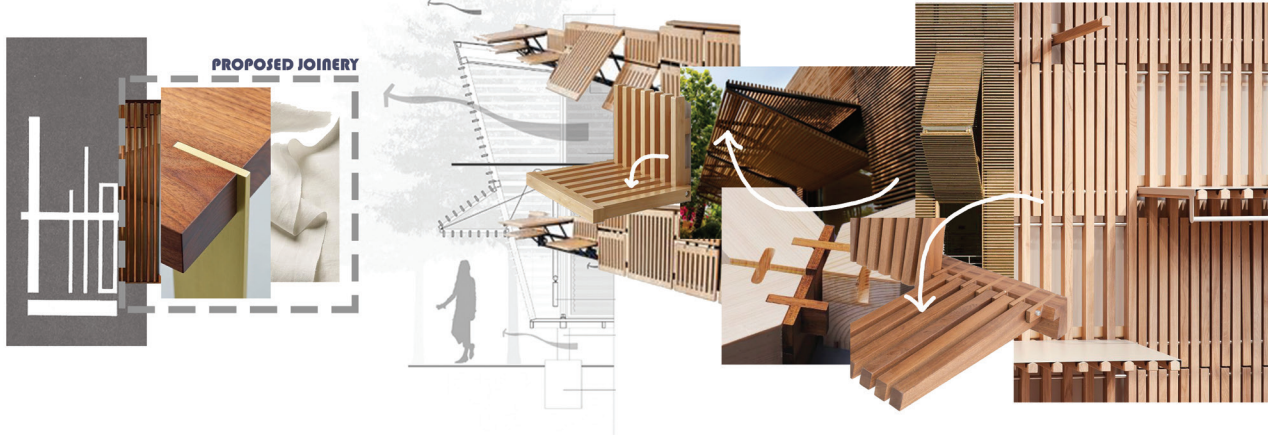
U/S Soffit Cons. Block

INTRICATE, LIGHTWEIGHT CONSTRUCTION IN **MIMESIS** WITH THE EXISTING CONSTRUCTION.
GALLERY LEVEL

AESTHETIC COHESIVENESS BETWEEN OLD AND NEW, BUT NEW INTRODUCED WITH **SUSTAINABLE MATERIALS** AND CONSTRUCTION TECHNIQUES, TO BE SOFTLY LIFTED FROM THE EXISTING SHOULD IT NO LONGER SUFFICE.

Level 0

CONSTRUCTION MOOD BOARD



TECHNICAL CONCEPT

SUSTAINABILITY STRATEGY

Drawing from existing materials, reintroducing sustainable alternatives

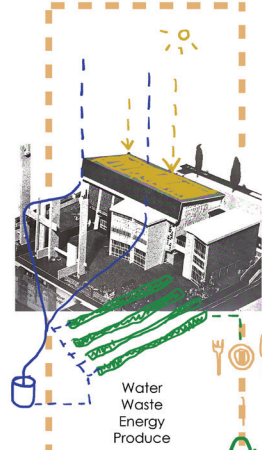
Lunawood Thermowood



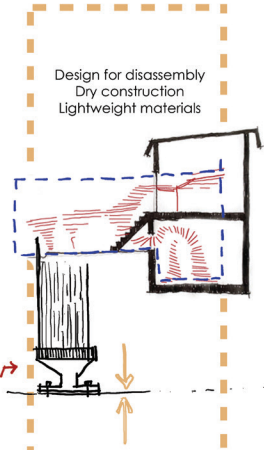
Greenery

SoliteQ Infinity Slate solar harvesting roof tiles

SUSTAINABLE MATERIALS



CIRCULAR SYSTEMS



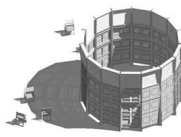
LIGHTWEIGHT CONSTRUCTION

PRECEDENTS

01. THE CHAPEL OF MANY

LOCATION: Coventry Cathedral, UK ARCHITECT: Sebastian Hicks YEAR: 2019

Non-denominative gathering. Walls of chapel consist of folding chairs. The more people to arrive = the walls come down and transparency increases. Space becomes organized by the group.



Adaptable
Interactive
Symbolic

02. TR HOUSE

LOCATION: Barcelona, Spain ARCHITECT: PMMT YEAR: 2015

Innovative solution to limiting pre-existing conditions. Lightweight implementation of ceramic tiles. Vitrified ceramic tiles on stainless steel wired net. Façade, pergola, curtain walls, and roof are served all at once.



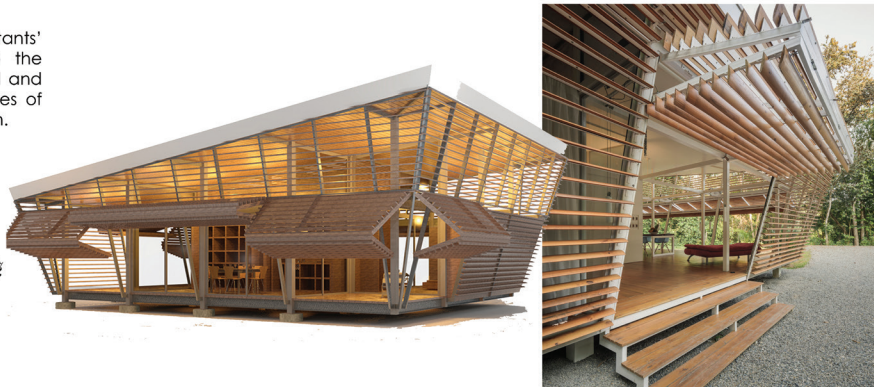
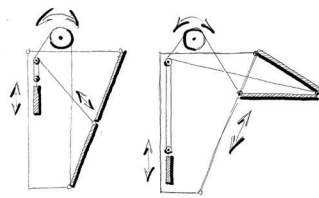
light
Roof Structure



03. NO FOOTPRINT HOUSE

LOCATION: Ojocal, Costa Rica ARCHITECT: A-01 YEAR: 2018

A house that responds to the inhabitants' needs. Furniture is "plugged" into the facade. Facade panels are opened and closed individually. Changing degrees of spatial separation or social integration.

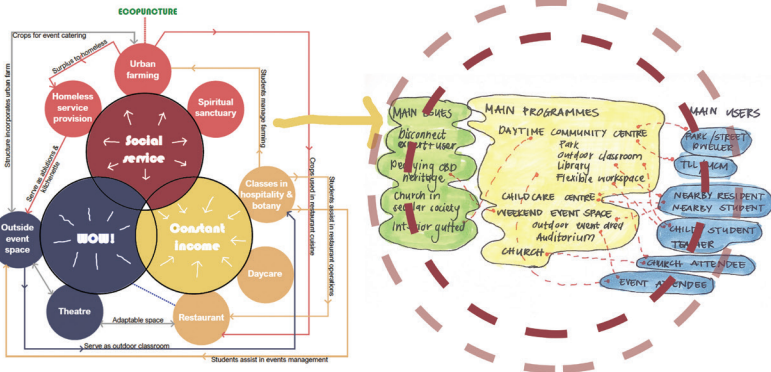


TECHINAL SYSTEMS & PRECEDENTS

Historical value	Social value	Technical value	Spiritual value
<ul style="list-style-type: none"> - Excellent example of Pretoria Regionalism - Relation to historic Burgers Park - Brought dynamic revival in 1960's CBD - Memory of Afrikaner prosperity under Apartheid 	<ul style="list-style-type: none"> - Valuable to Doxa Deo congregation and temporary students 	<ul style="list-style-type: none"> - Quality of construction and craftsmanship - Dalle de verre windows by Leo Theron 	<ul style="list-style-type: none"> - Spiritual value to congregation - Utilized for worship nights

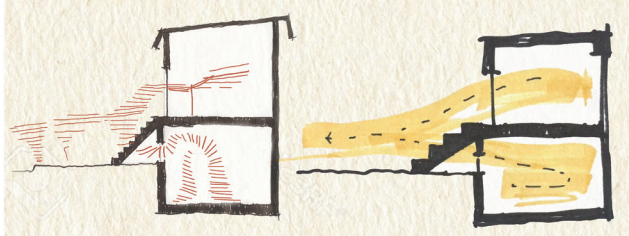
Urban	Typological	Aesthetic	Social	Ecological	Use
<ul style="list-style-type: none"> - Site in service of immediate context - Improving quality of life for street, neighbours, precinct 	<ul style="list-style-type: none"> - Establishment of new permeable church typology 	<ul style="list-style-type: none"> - Transition from expert value to community value - Pleasing to look at for city dweller 	<ul style="list-style-type: none"> - Increased social value: more users reached & rituals accommodated 	<ul style="list-style-type: none"> - Connection to botany of Burgers Park - Climate adaptation strategies to bring building into sustainability era 	<ul style="list-style-type: none"> - Useful in aiding in needs and economy of area

PROGRAMMATIC DEVELOPMENT

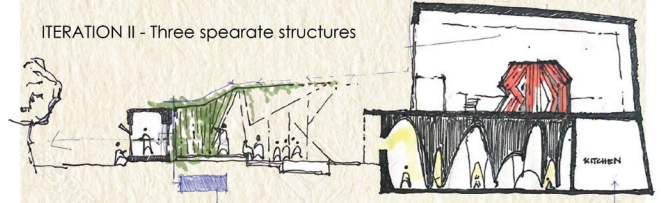


SPATIAL MANIFESTATION

ITERATION I - Hall included



ITERATION II - Three separate structures



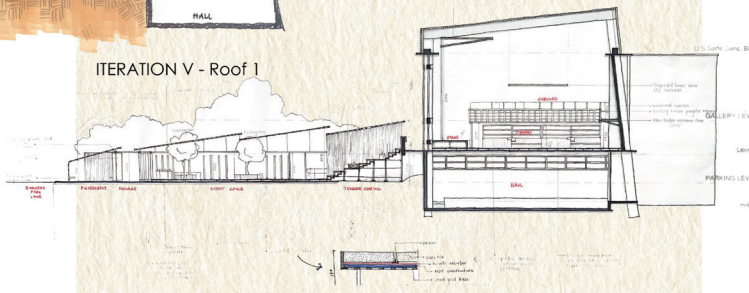
ITERATION III - Homeless service fence



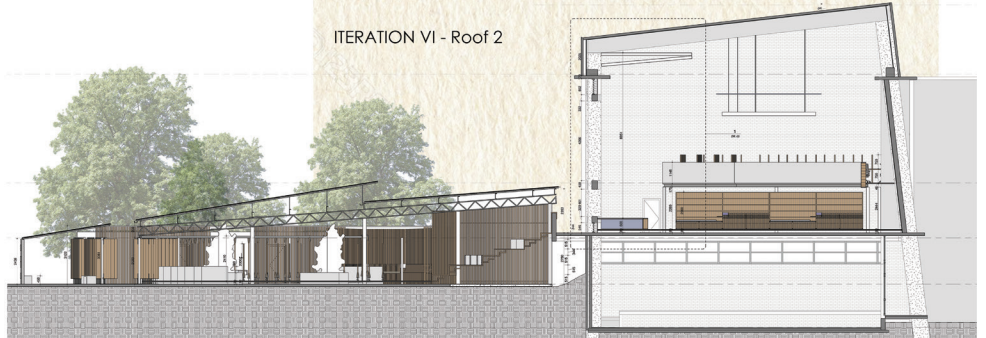
ITERATION IV - Organic



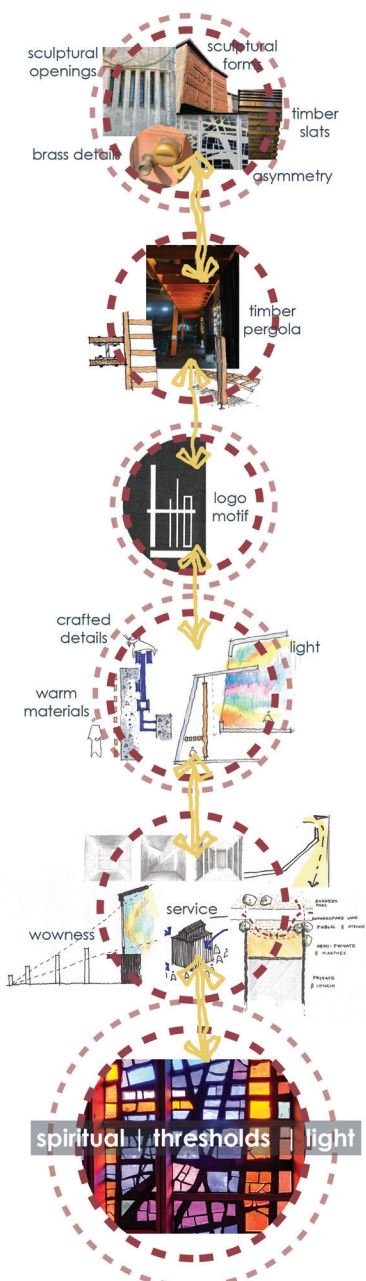
ITERATION V - Roof 1



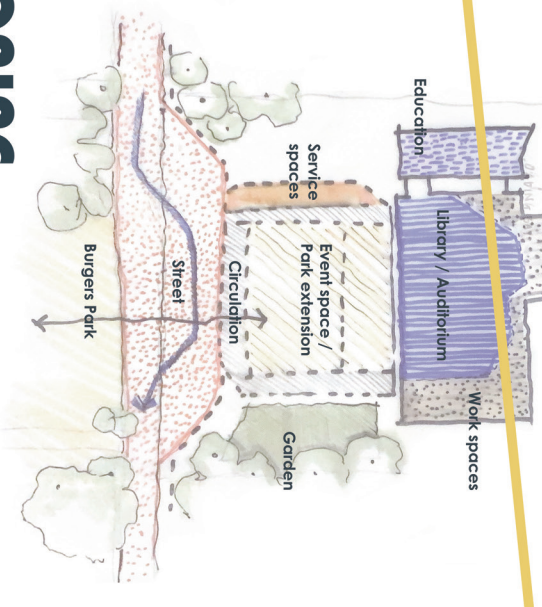
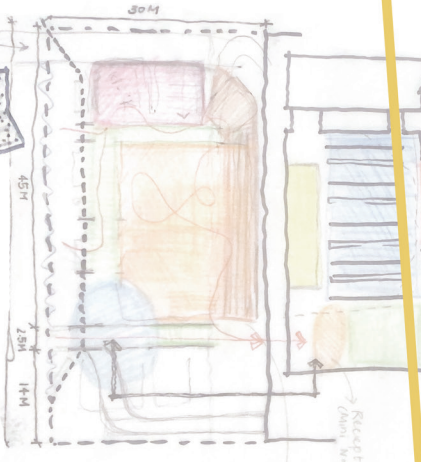
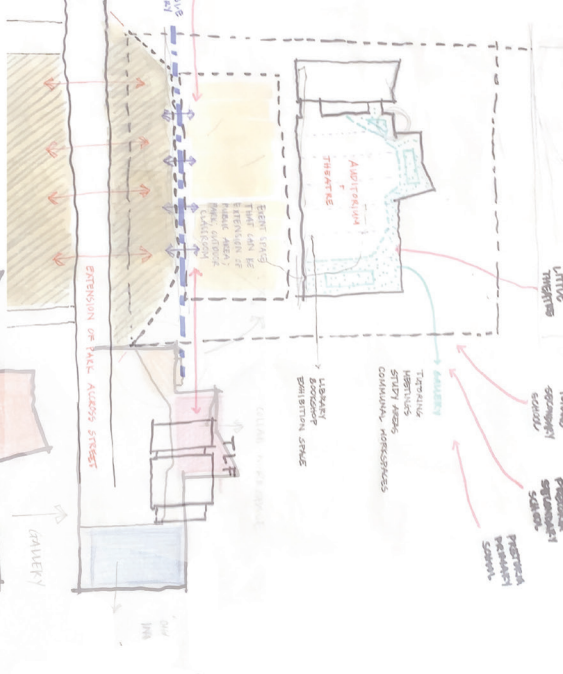
ITERATION VI - Roof 2



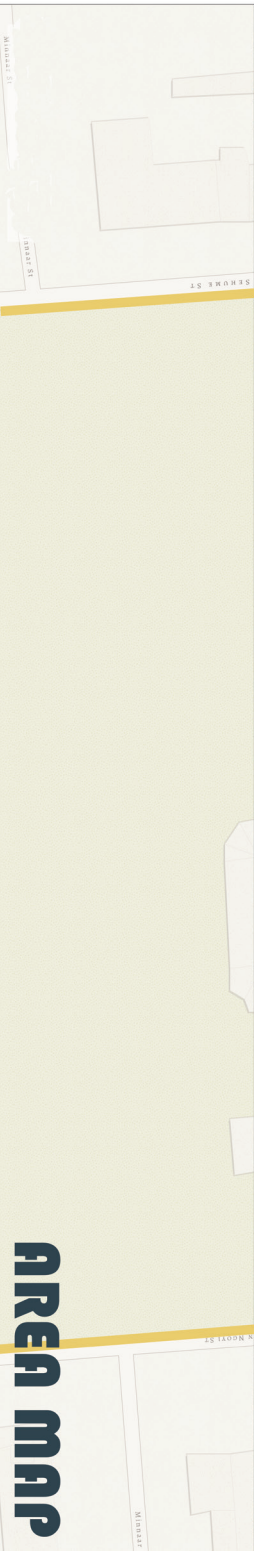
INFORMANT SELECTION



DESIGN ITERATION



ZONING



Scale 1:500



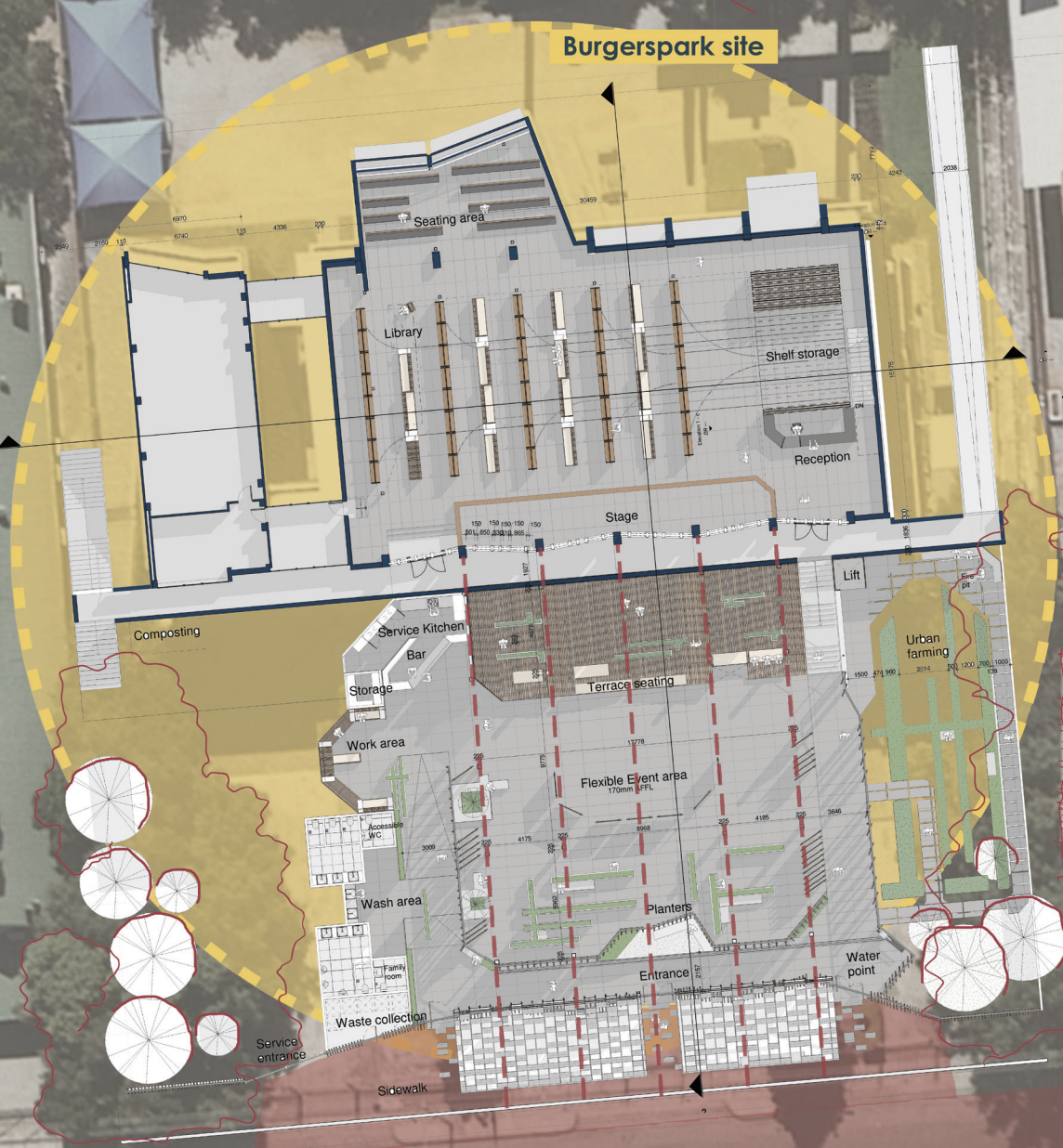
AREA MAP

Visagie Street

Visagie St

Visagie St

Burgerspark site



TLF

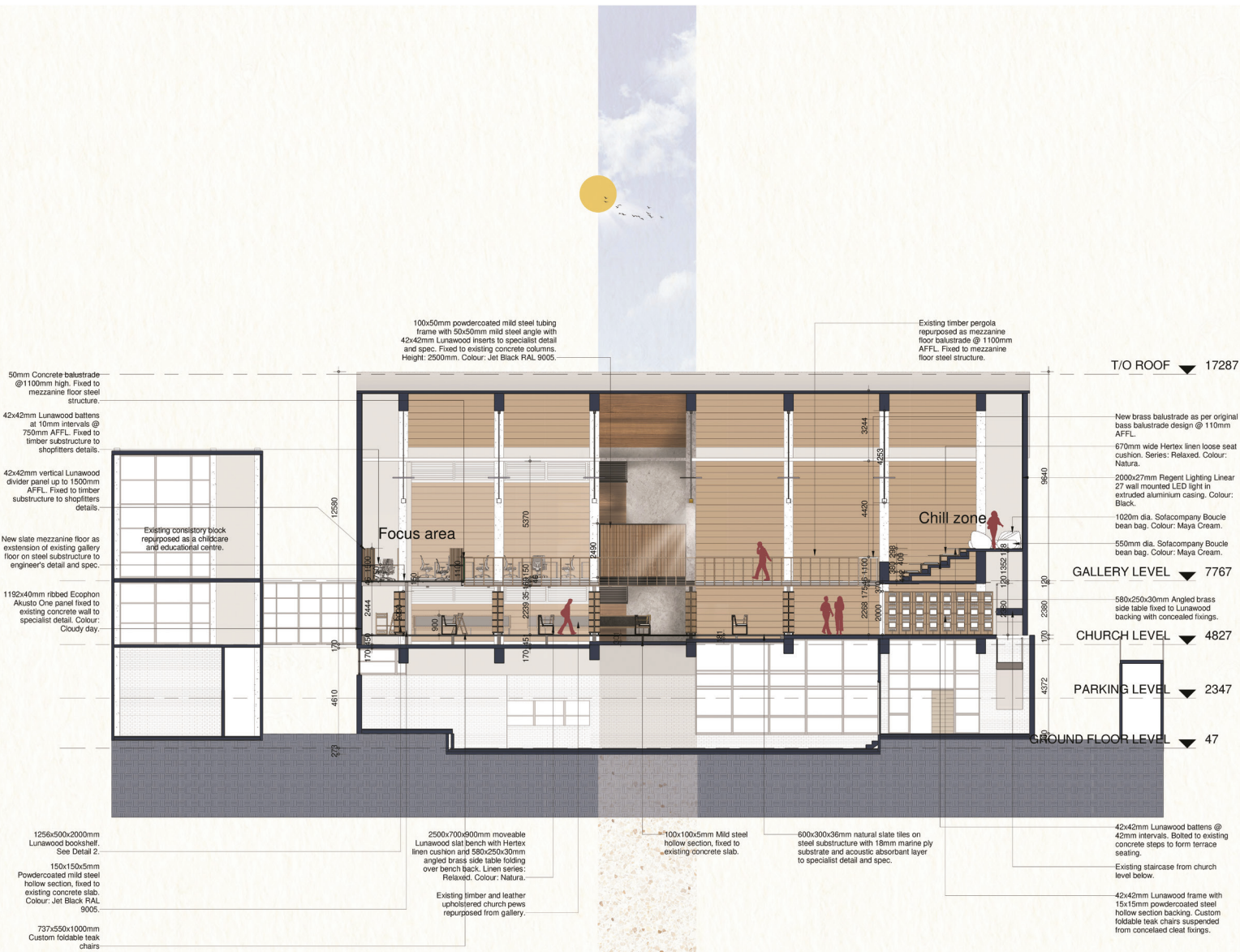
Burgers Park Lane

Scale 1:200



Burgers Park

SITE PLAN

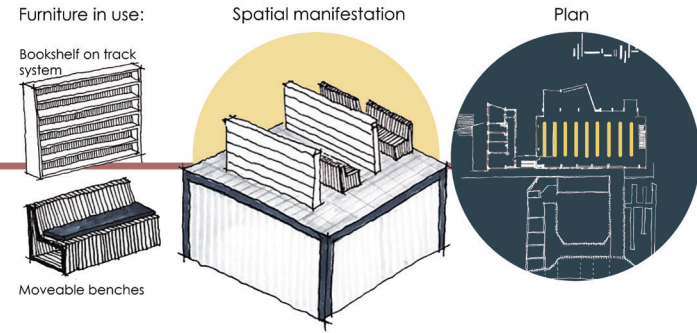


Scale 1: 100
SECTION AA

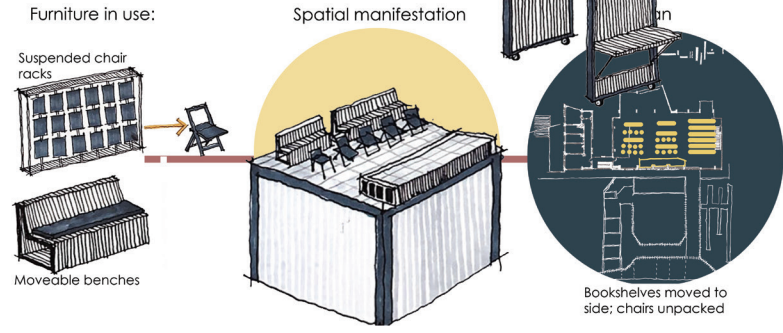


CHURCH/AUDITORIUM

LIBRARY

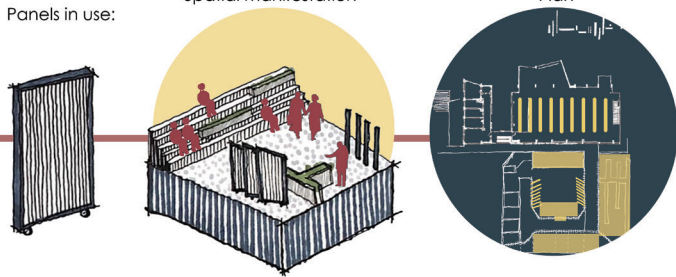


AUDITORIUM

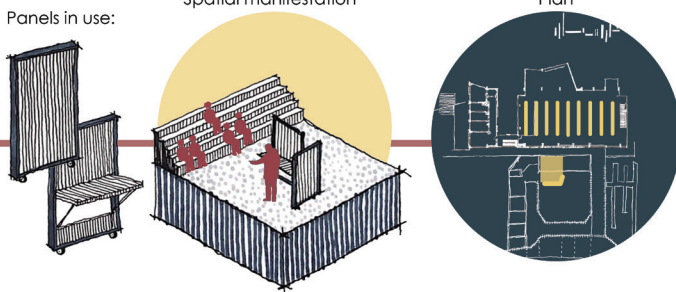


EXTERIOR SPACE

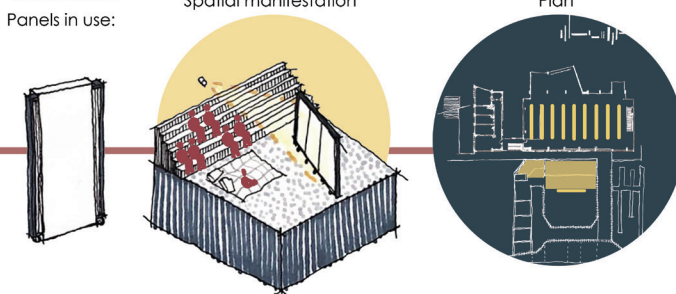
PARK



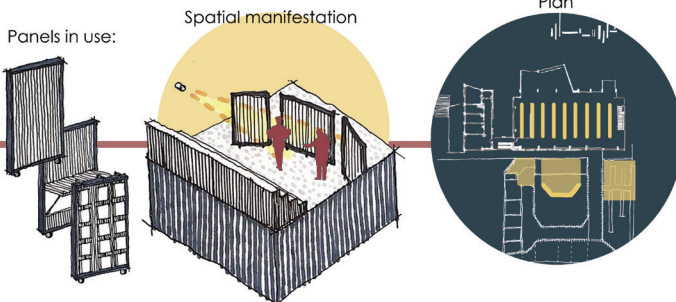
CLASSROOM



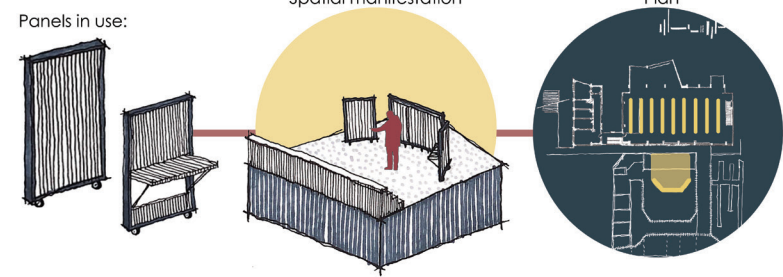
CINEMA



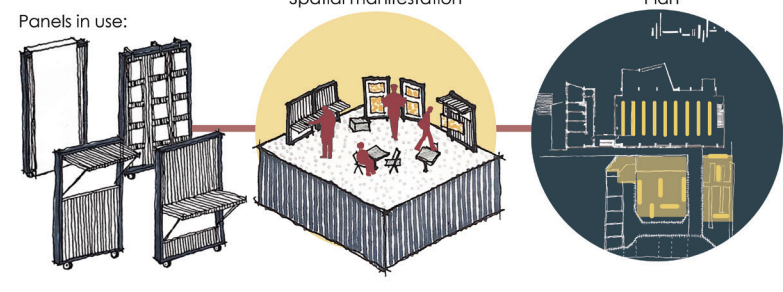
PERFORMANCE



MEETING SPACE



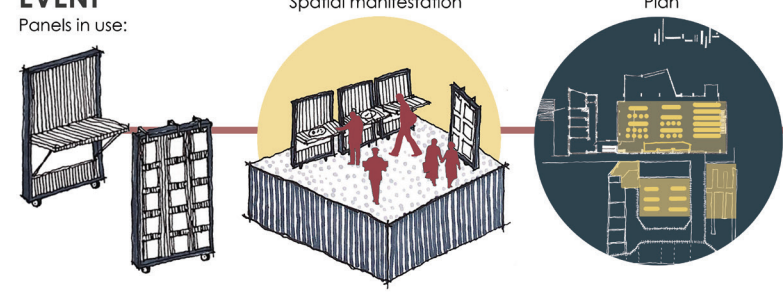
MARKET



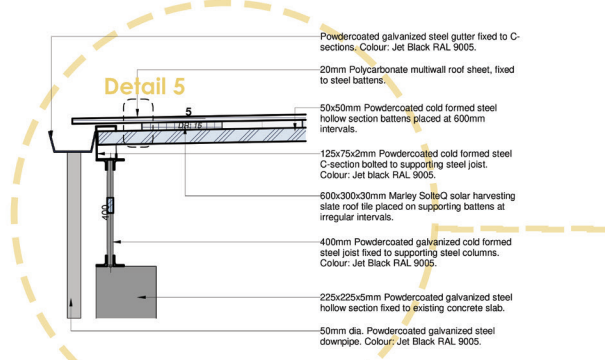
EXHIBITION



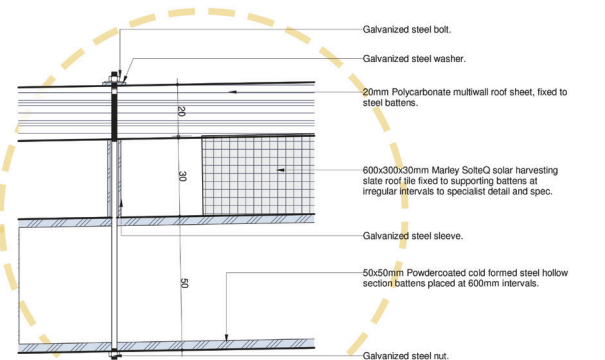
EVENT



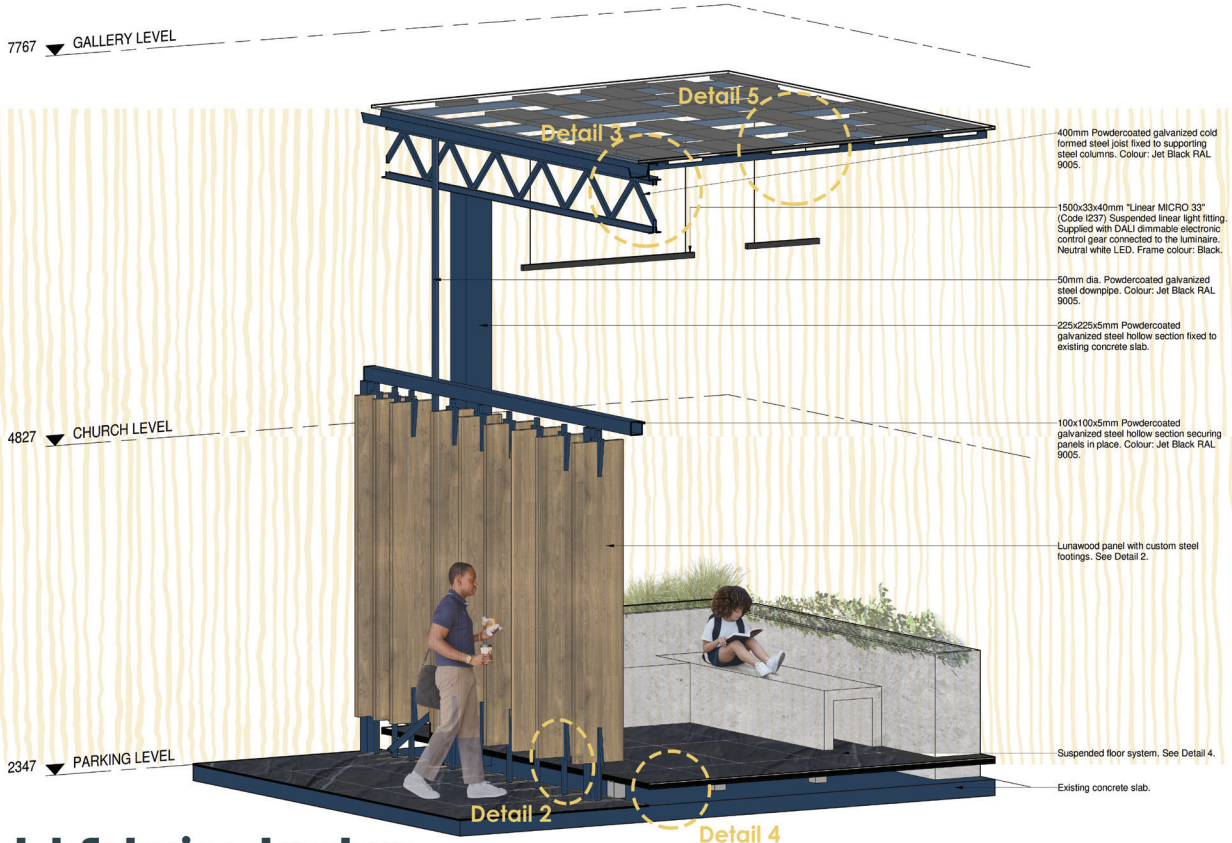
SCENARIOS



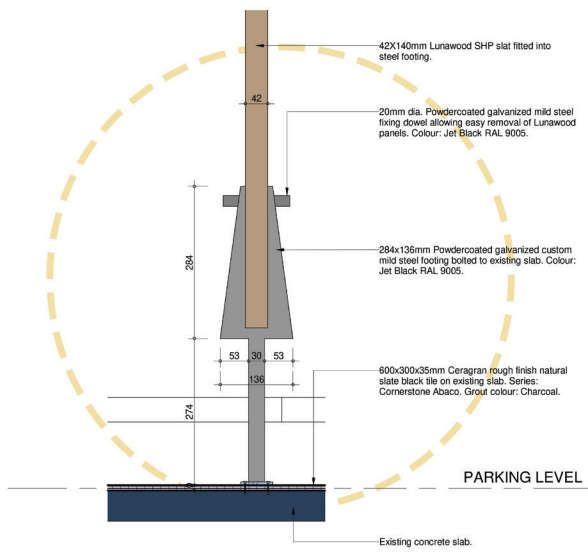
3 | Roof detail
Scale 1:10



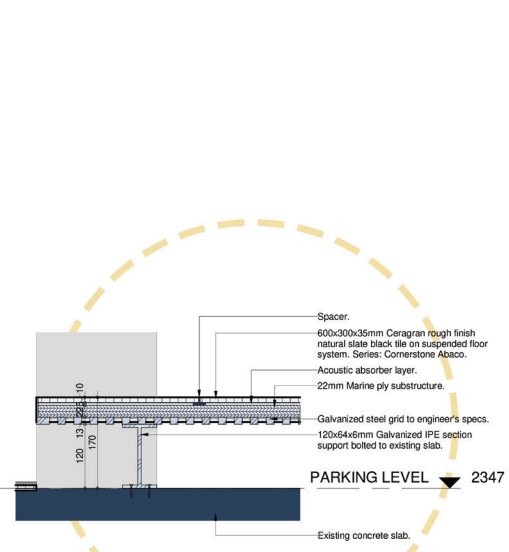
5 | Polycarbonate fixing
Scale 1:1



1 | Exterior structure
Scale 1:20



2 | Panel detail
Scale 1:5



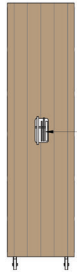
4 | Floor detail
Scale 1:5

DETAIL 4 - EXTERIOR STRUCTURE

Detail 2 - Bookshelf

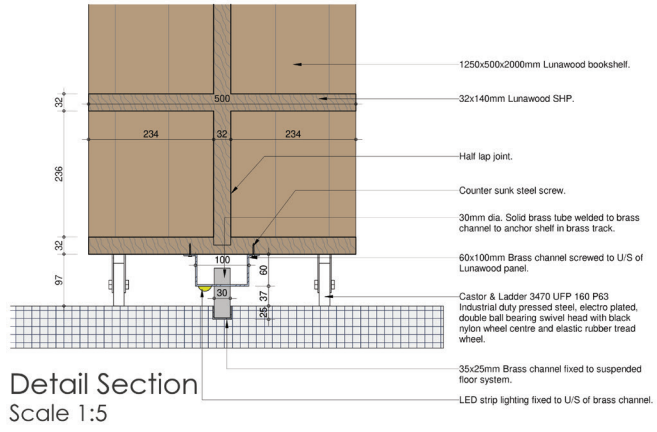


3D

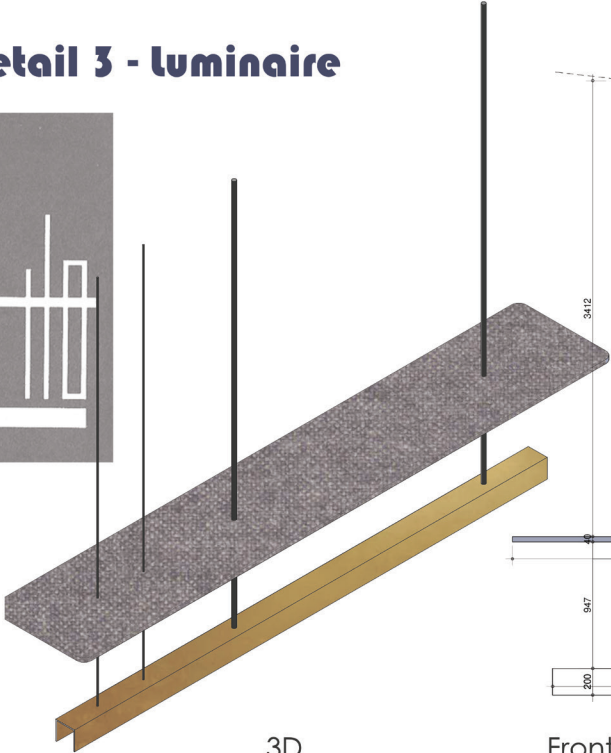
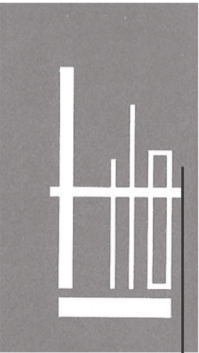


Left Elevation
Scale 1:20

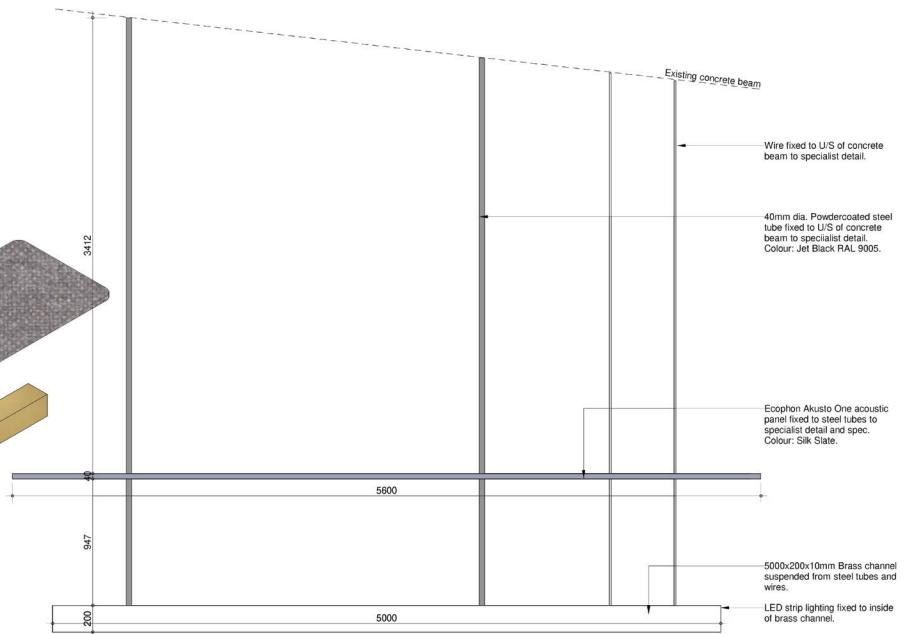
Brass cross motif handle
screwed to Lunawood.



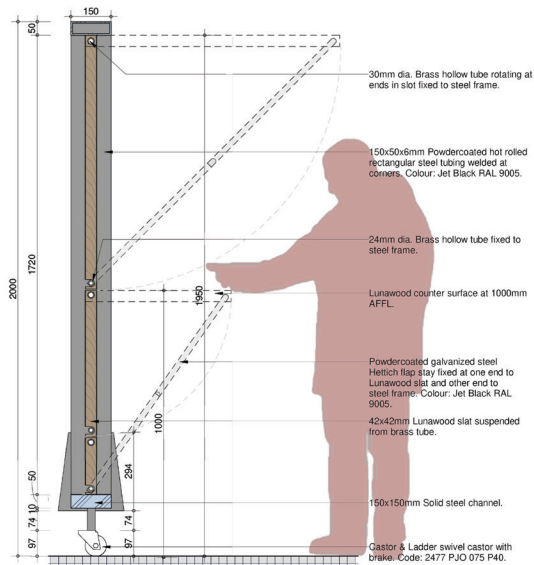
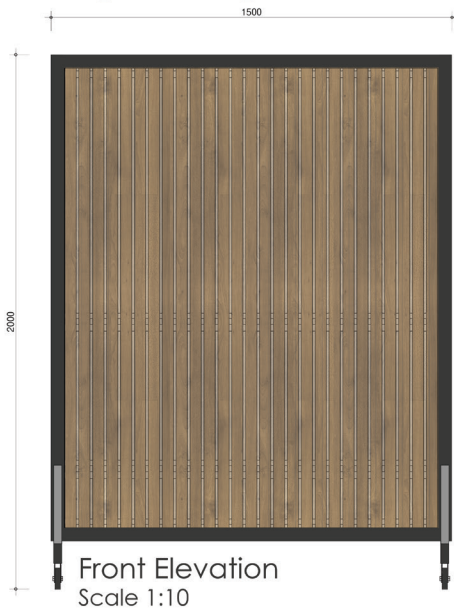
Detail 3 - luminaire

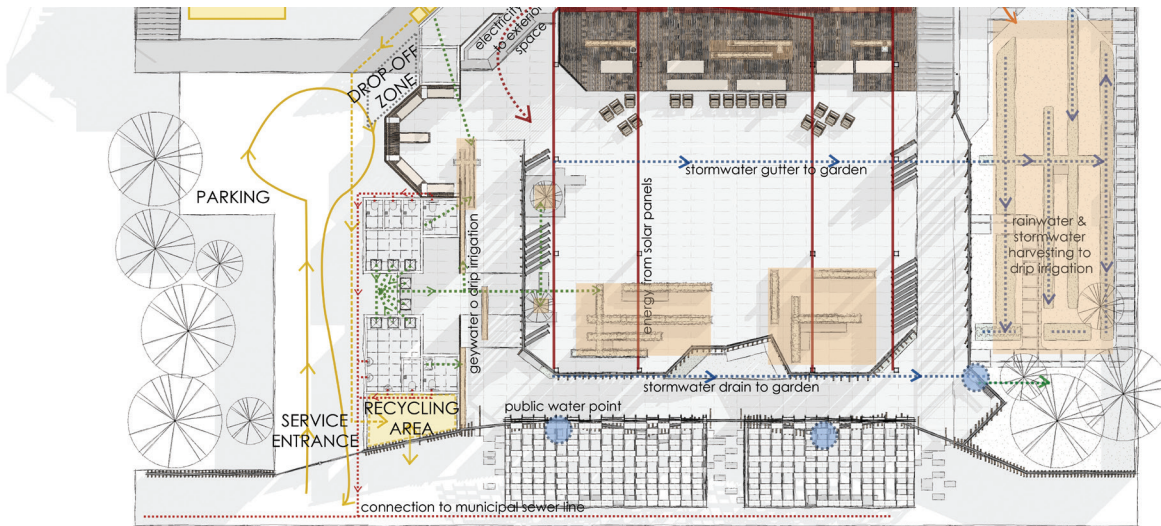


3D



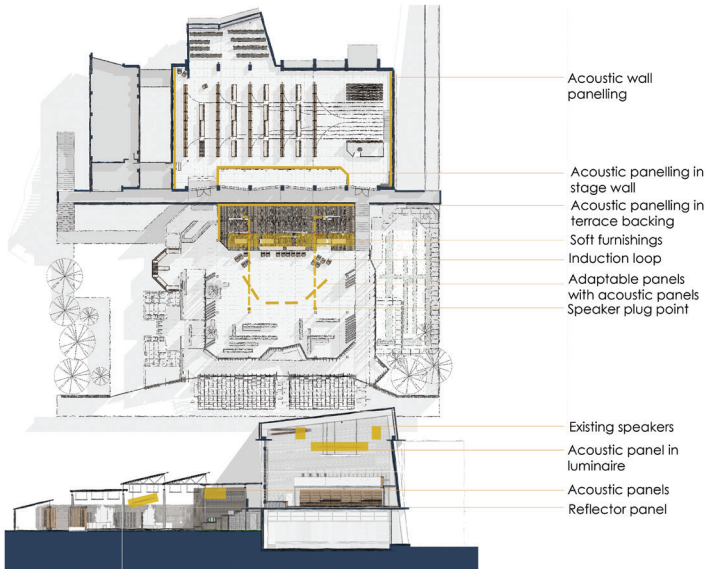
Detail 1 - Adaptable panel





WASTE GREYWATER FRESH WATER ENERGY PRODUCE

ACOUSTIC STRATEGY



SHADING & VENTILATION



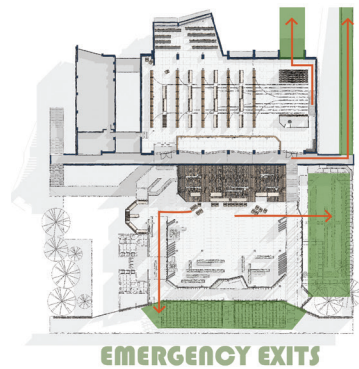
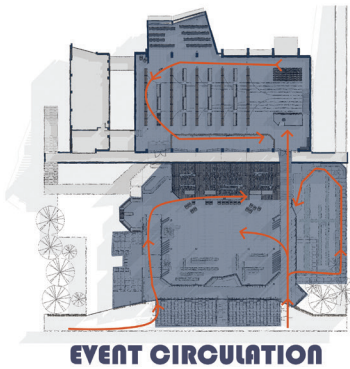
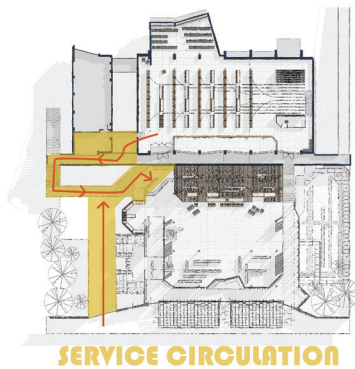
ABLUTIONS

SANS 10400 CLASSIFICATION:
A1: Entertainment & Public assembly
 +- 500 population

Public: Male: 1 wc
 1 whb
 1 urinal
 Female: 2 wc
 1 whb

Personnel: Male: 1 wc
 1 whb
 1 urinal
 Female: 2 wc
 1 whb

CIRCULATION



LIGHTING

SPAZIO AVICO LINEAR PENDANT



SPAZIO LONE PAR 30



BEKA ILMUp4 FLOOR LAMP



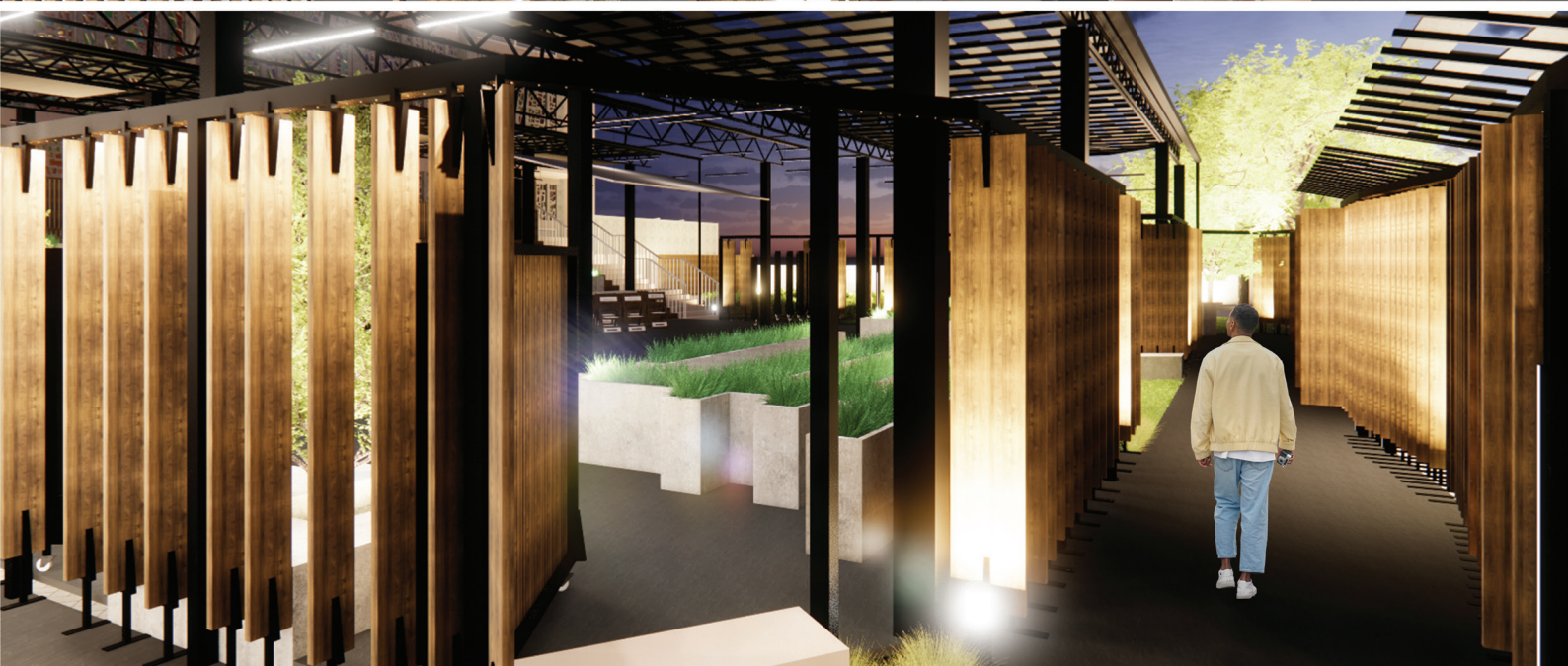
SPAZIO LONE PAR SPOTLIGHT



BEKA CITRINE LANDSCAPE LIGHT



SERVICES INTEGRATION



B U R G E R S P A R K