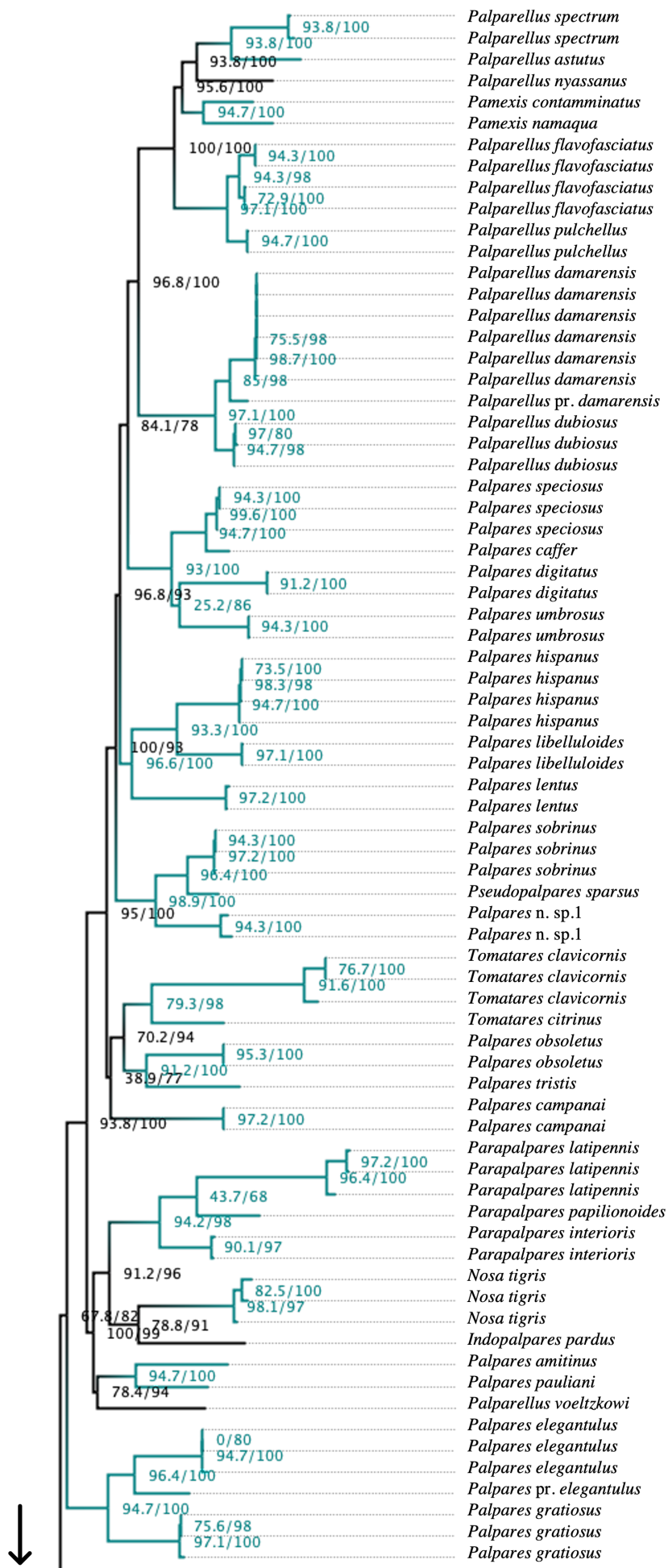


Figure S1. Best-fit ML tree resulting from the analysis of the specimens-level dataset. Support values are presented on nodes as follows: SH-aLRT/uBV. Clades consistent with those retrieved by the ML analysis of the species-level dataset are represented in blue.



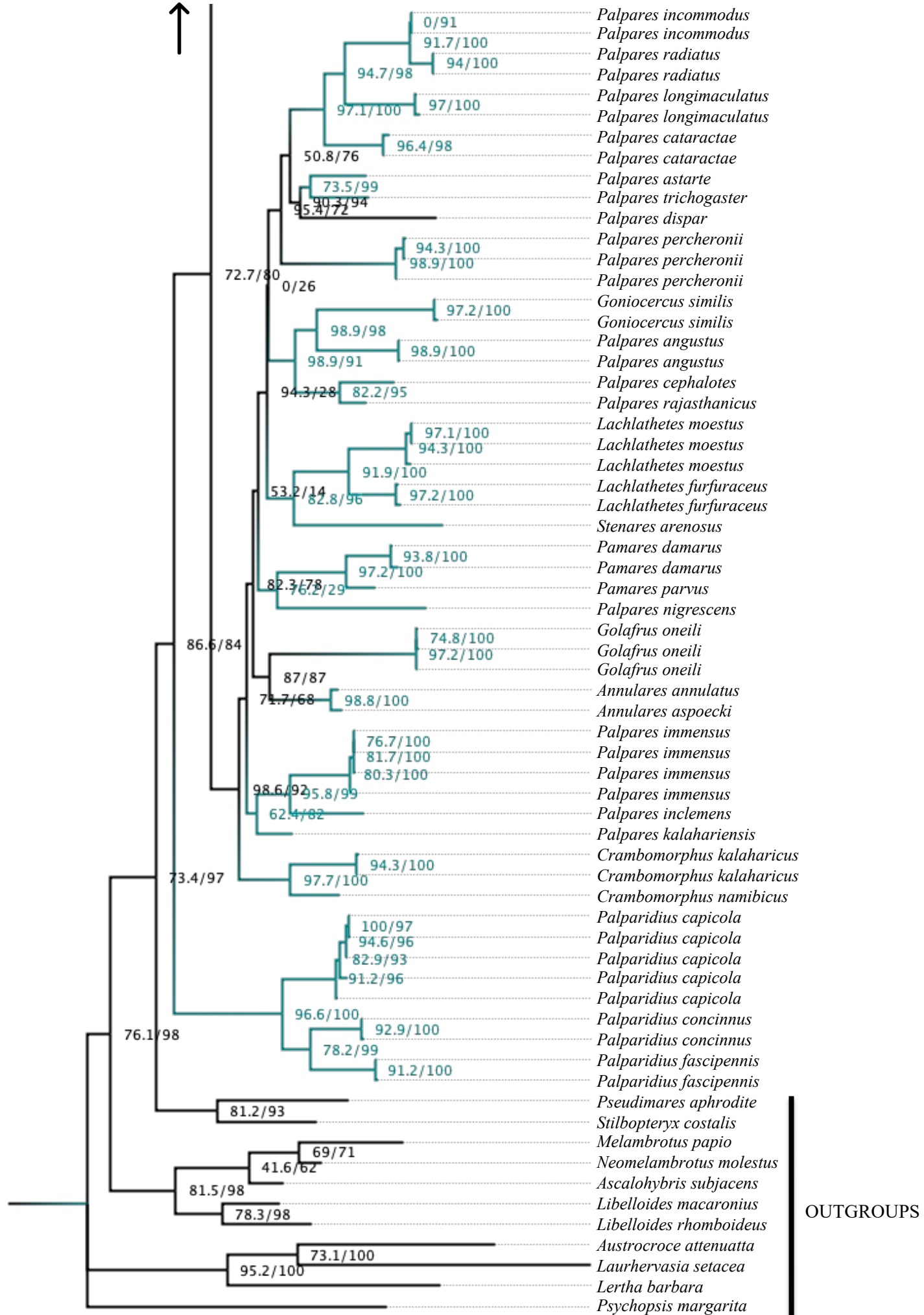
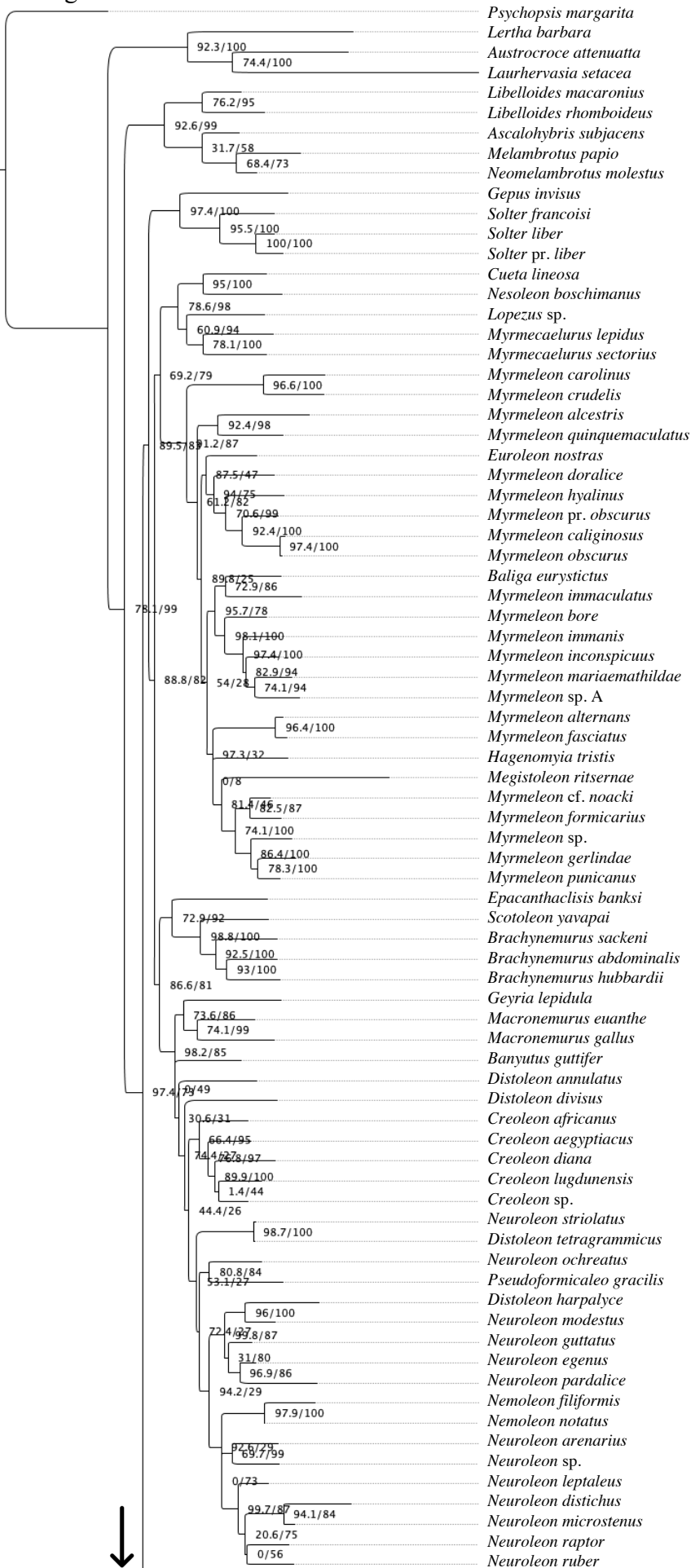
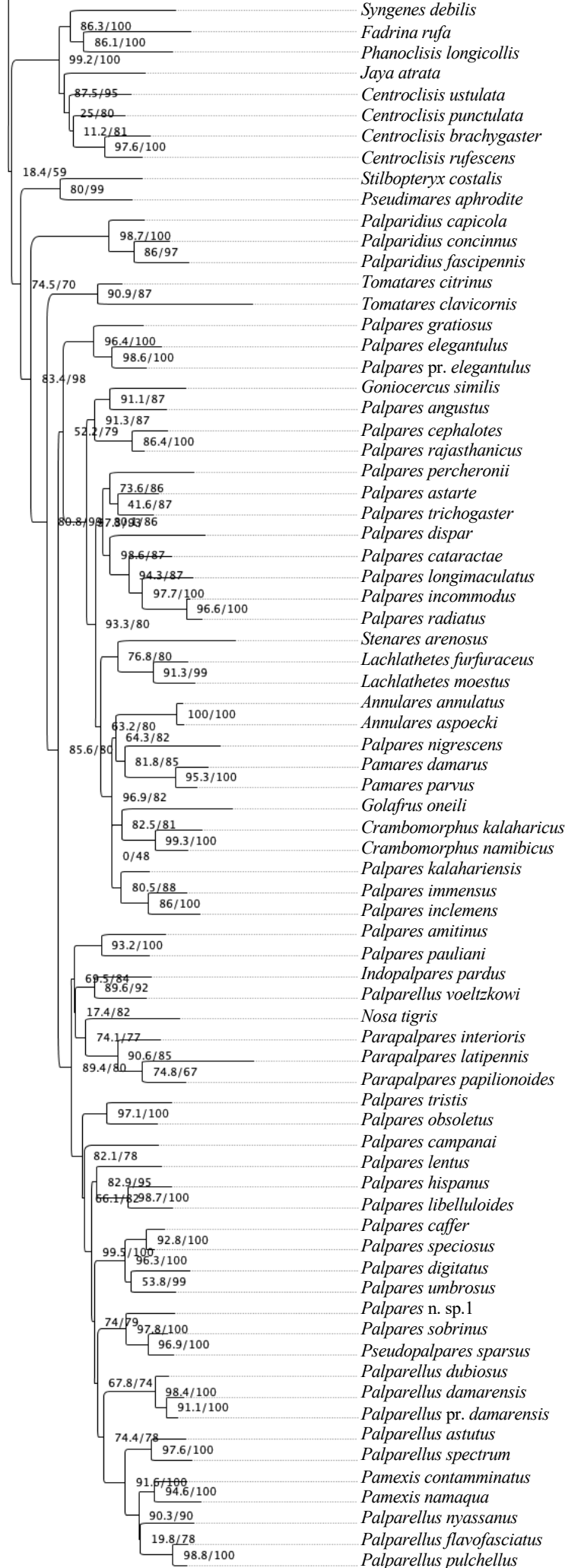


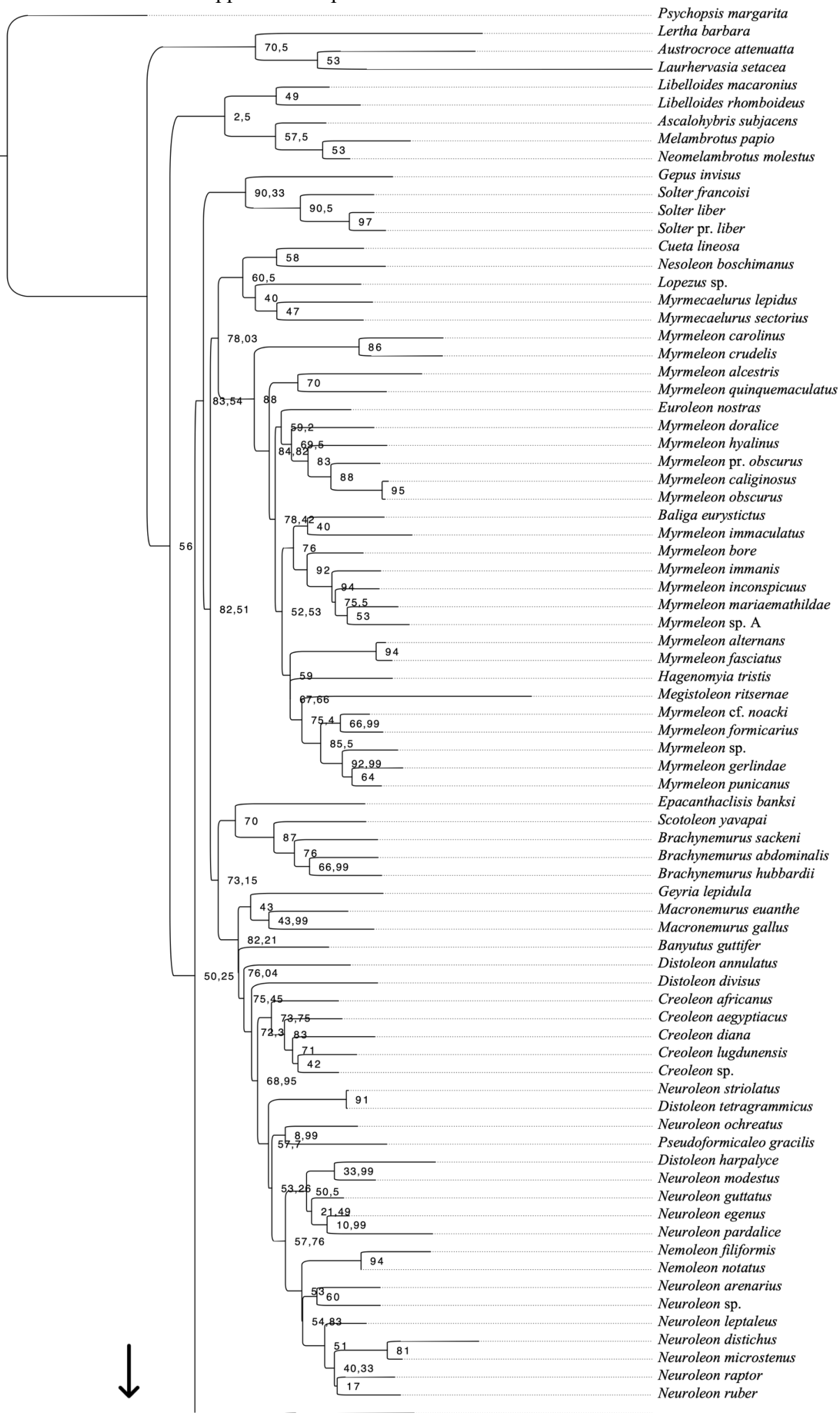
Figure S2. Best-fit ML tree resulting from the analysis of the species-level dataset.

S2.1. Best-fit ML tree with support values presented on nodes as follows: SH-aLRT values on the left, uBV values on the right.





S2.2. Best-fit ML tree with TBE support values presented on nodes.



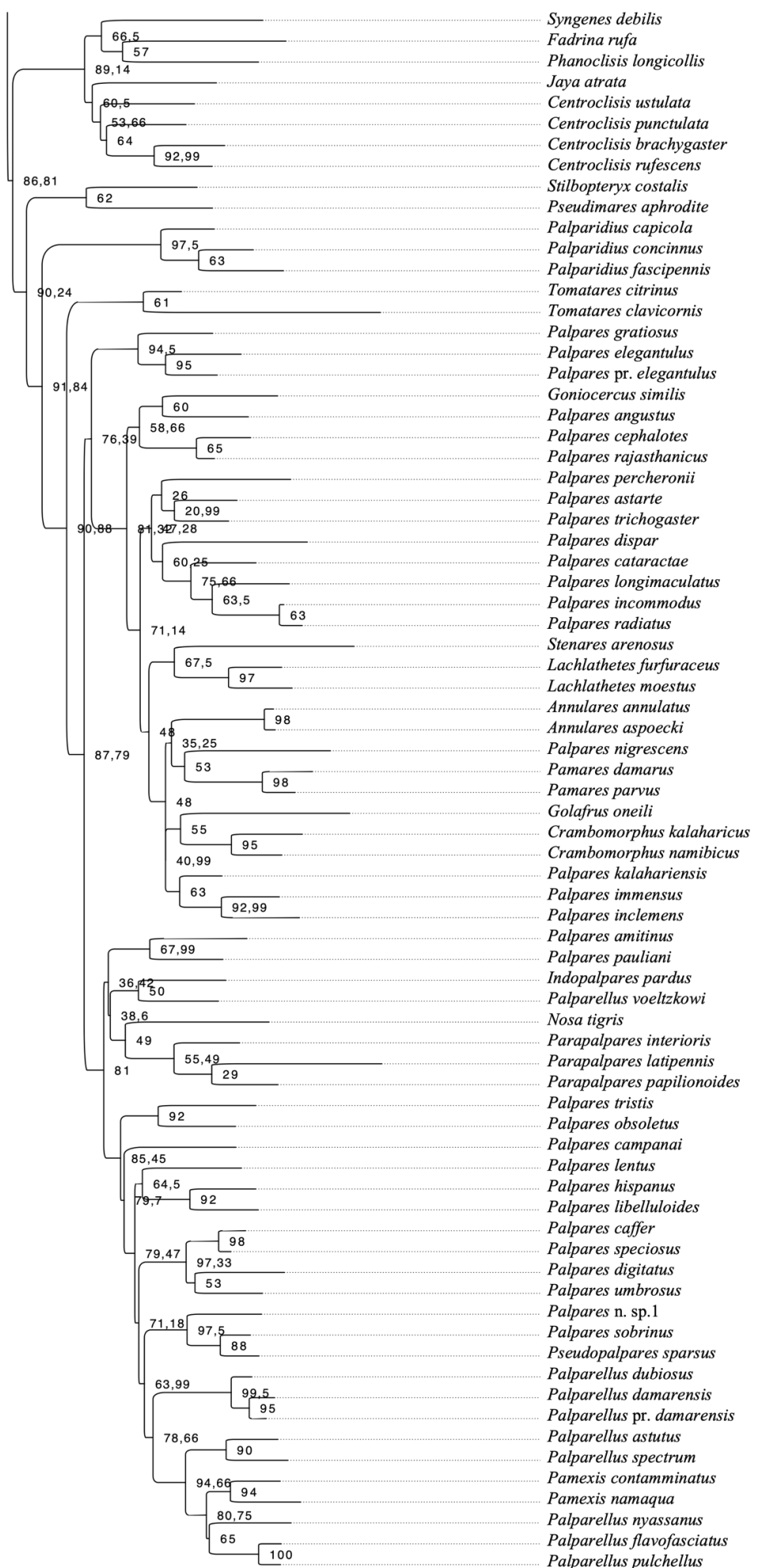
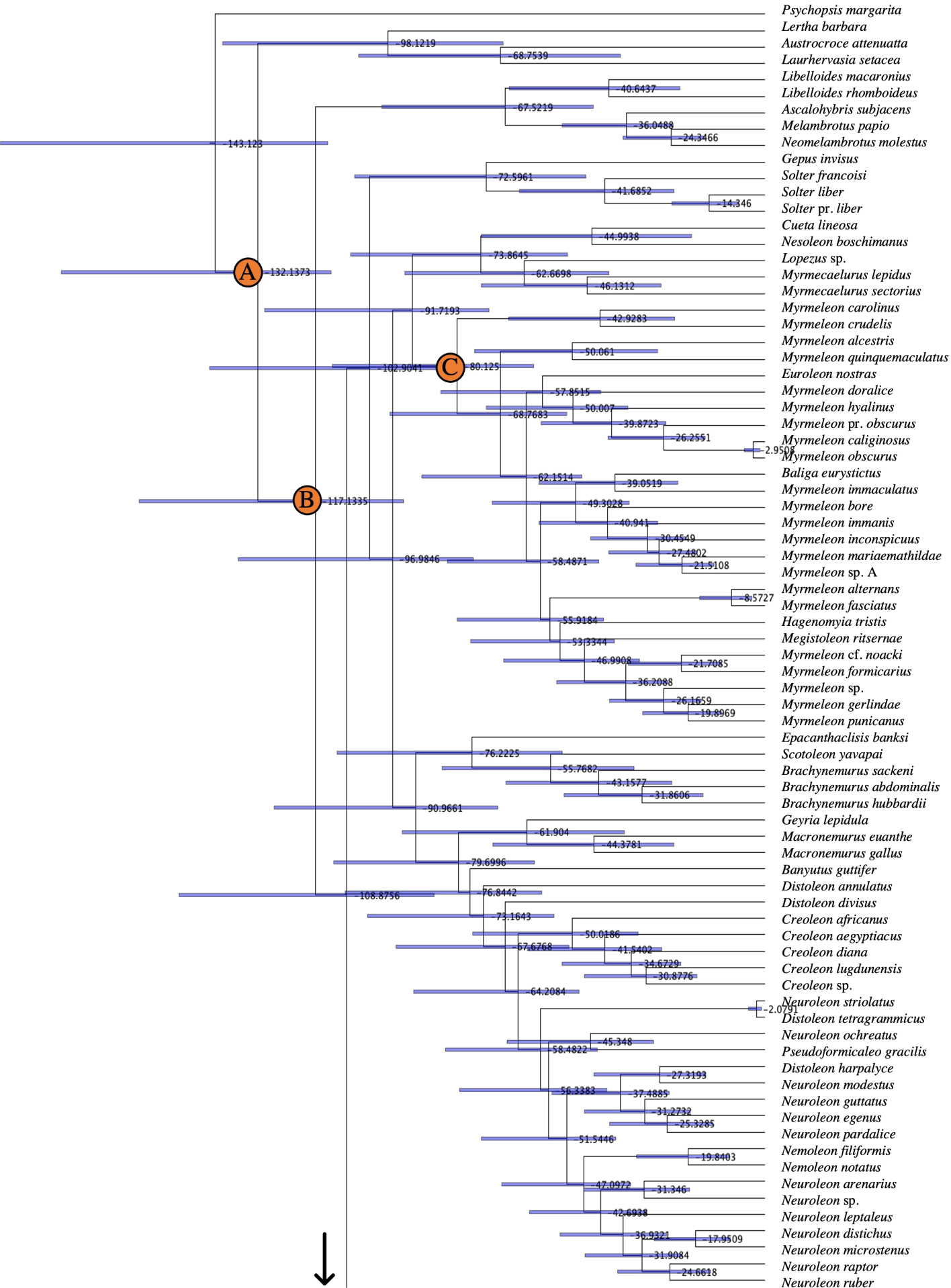
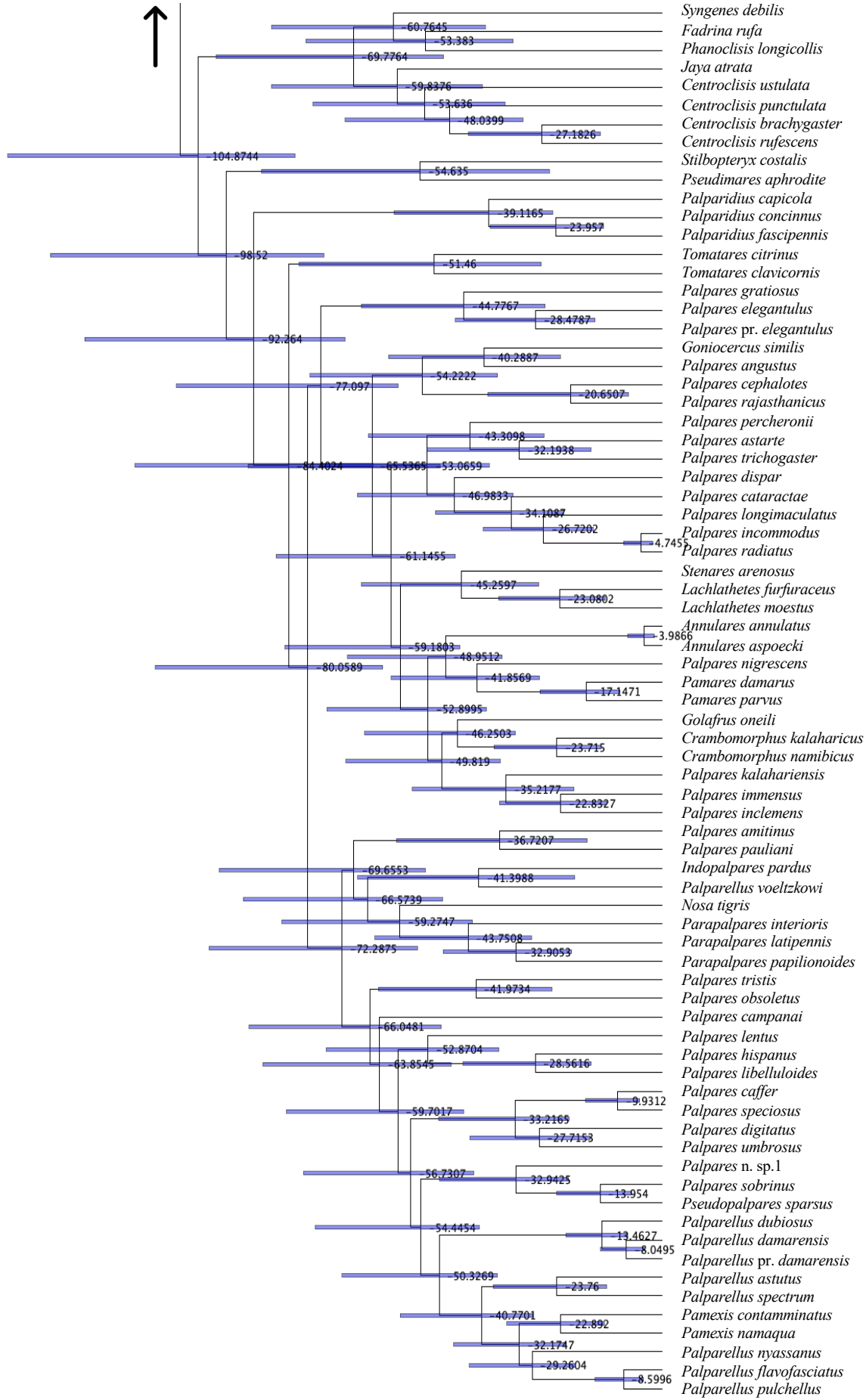


Figure S3. Dated phylogeny resulting from the BEAST analyses relying on a primary calibration approach based on three fossils: (A) †*Roesleriana exotica*, (B) †*Pristinofossor rictus*, (C) †*Porrerus dominicanus*. Median ages are provided on nodes; horizontal bars represent 95% HPD of age estimates.



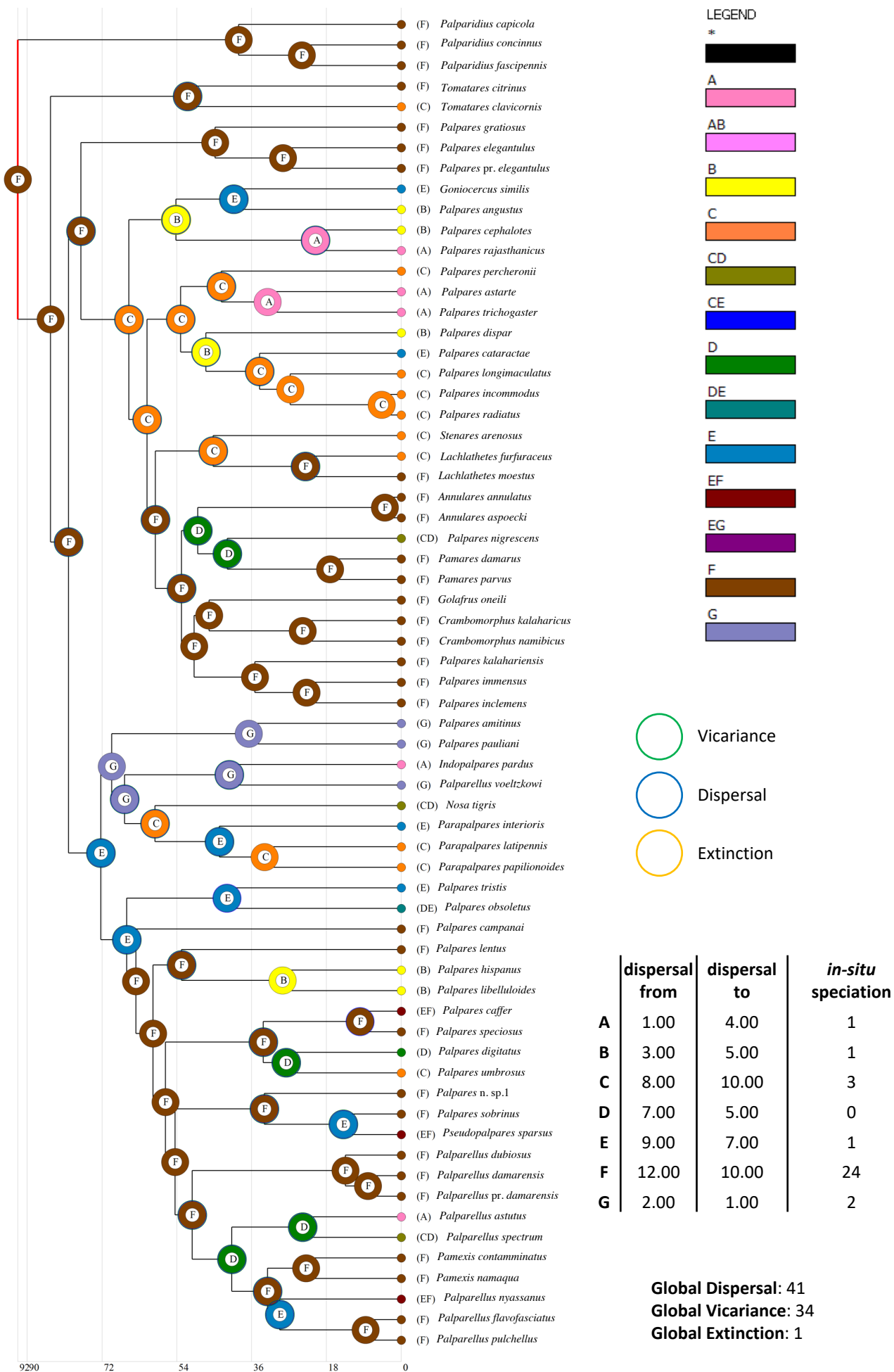


20.0

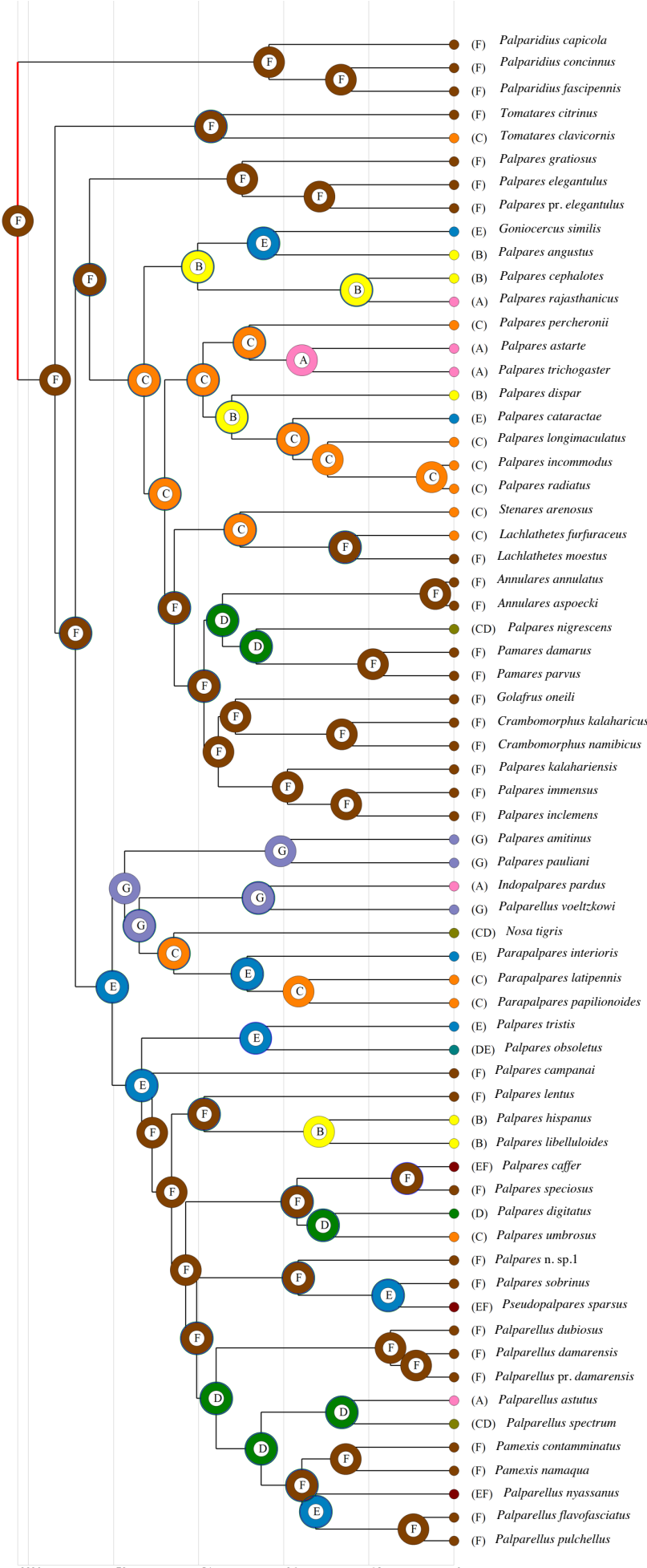
-175 -150 -125 -100 -75 -50 -25 0

Figure S4. Results of RASP analyses.

S4.1. Results of RASP analyses with a DEC+j model (reference model). Most likely states (MLS) are figured inside the circles.



S4.2. Results of RASP analyses with a DIVALIKE+j model (reference model). Most likely states are figured inside the circles.



LEGEND

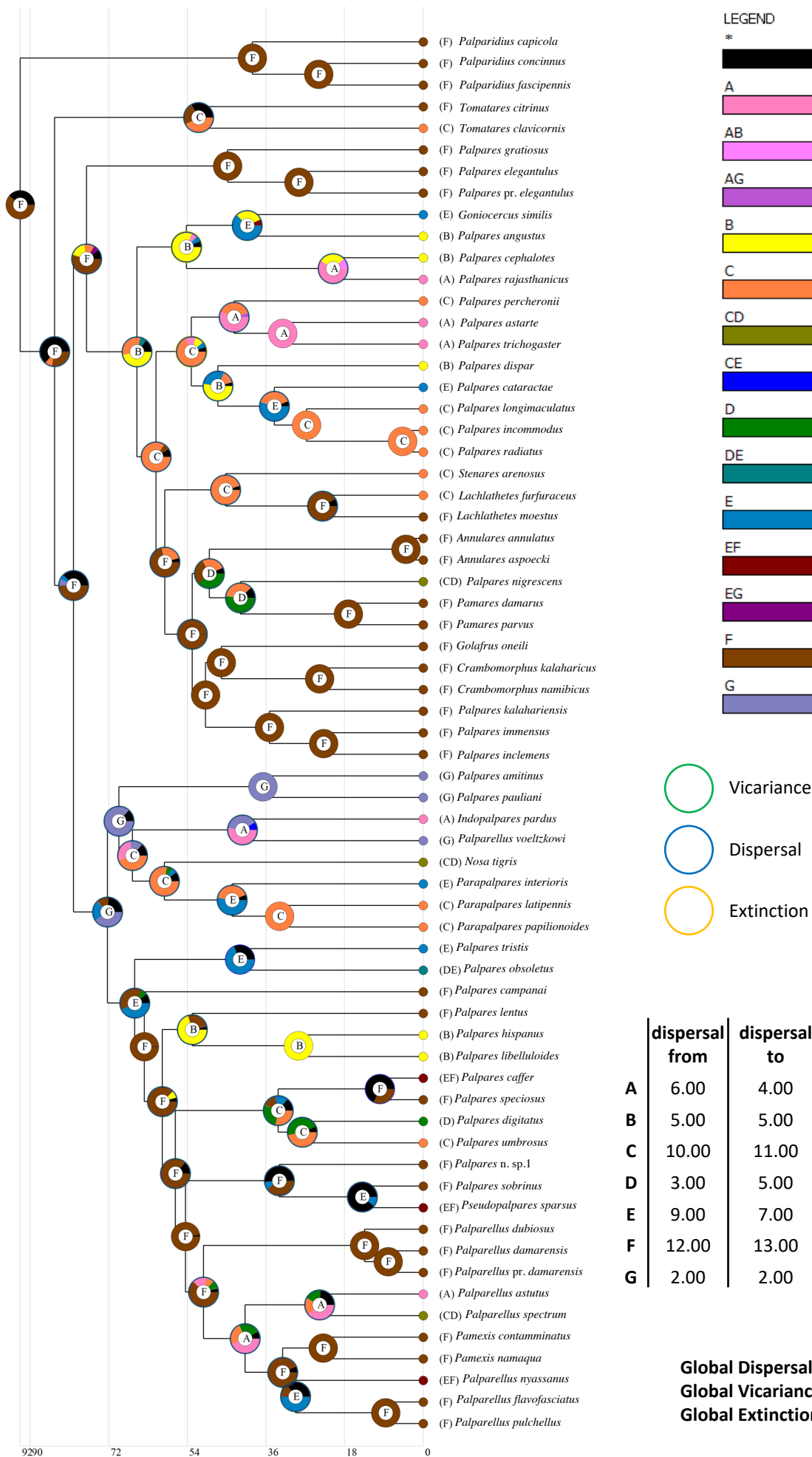
- * [Black bar]
- A [Pink bar]
- AB [Light pink bar]
- AG [Purple bar]
- B [Yellow bar]
- BC [Light green bar]
- C [Orange bar]
- CD [Olive bar]
- CE [Blue bar]
- D [Green bar]
- DE [Teal bar]
- E [Light blue bar]
- EF [Dark red bar]
- EG [Purple bar]
- F [Brown bar]
- G [Light blue bar]

- Vicariance
- Dispersal
- Extinction

	dispersal from	dispersal to	<i>in-situ</i> speciation
A	0.00	4.00	1
B	3.00	4.00	1
C	8.00	10.00	3
D	8.00	5.00	0
E	9.00	7.00	1
F	12.00	11.00	23
G	2.00	1.00	2

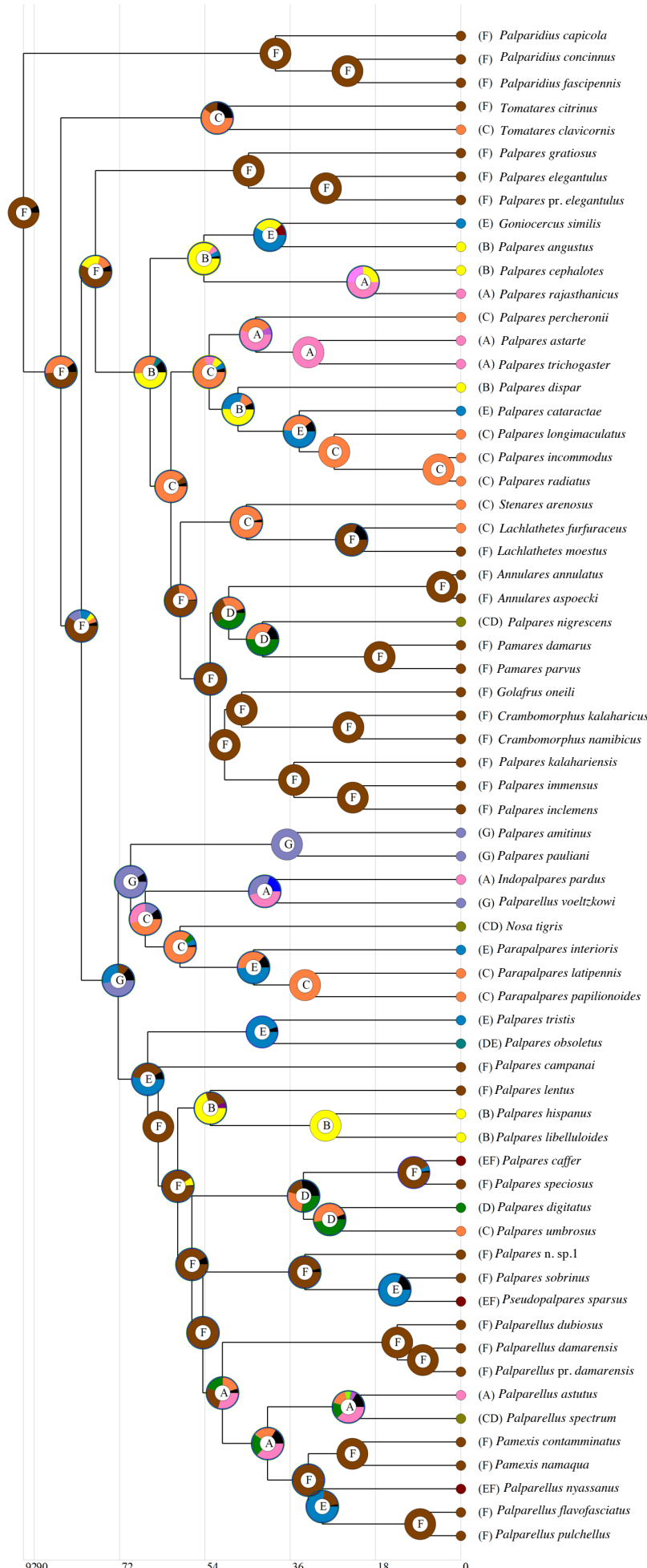
Global Dispersal: 42
Global Vicariance: 35
Global Extinction: 0

S4.3. Results of RASP analyses with a DEC+j model (null model). Most likely states are figured inside the circles.



9290 72 54 36 18 0

S4.4. Results of RASP analyses with a DIVALIKE+j model (null model). Most likely states are figured inside the circles.



LEGEND

- * [Black bar]
- A [Pink bar]
- AB [Light pink bar]
- AG [Purple bar]
- B [Yellow bar]
- BC [Light green bar]
- C [Orange bar]
- CD [Olive bar]
- CE [Blue bar]
- D [Green bar]
- DE [Teal bar]
- E [Light blue bar]
- EF [Dark red bar]
- EG [Purple bar]
- F [Brown bar]
- G [Light blue bar]

○ Vicariance
○ Dispersal
○ Extinction

	dispersal from	dispersal to	<i>in-situ</i> speciation
A	7.00	4.00	1
B	5.00	5.00	1
C	8.00	11.00	3
D	5.00	5.00	0
E	9.00	7.00	1
F	12.00	14.00	20
G	2.00	2.00	1

Global Dispersal: 46
Global Vicariance: 39
Global Extinction: 2