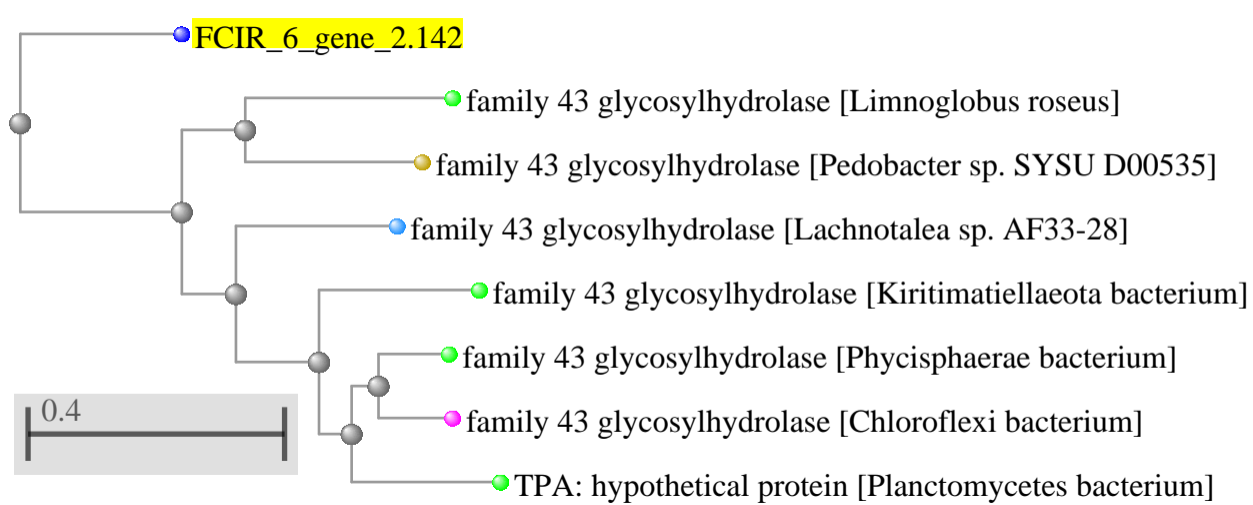


Figure S8. Host-range-associated genes with ancestral origins outside Fungi. Host-range-associated genes investigated are highlighted in yellow; FCIR = *Fusarium circinatum* and FTEMP = *Fusarium temperatum*.



FTEMP_10_gene_5.23

tryptophanase [Microdochium bolleyi]

putative beta-eliminating lyase [Madurella mycetomatis]

Tryptophanase [Colletotrichum tropicale]

tryptophanase [Candidatus Lokiarchaeota archaeon]

TPA: tryptophanase [Sediminispirochaeta sp.]

tryptophanase [Candidatus Lokiarchaeota archaeon]

tryptophanase [Candidatus Lokiarchaeota archaeon]

tryptophanase [Candidatus Lokiarchaeota archaeon]

Tryptophanase [Candidatus Lokiarchaeota archaeon]

tryptophanase [Candidatus Lokiarchaeota archaeon]

tryptophanase [Candidatus Lokiarchaeota archaeon Loki_b32]

tryptophanase [Candidatus Lokiarchaeota archaeon]

tryptophanase [Candidatus Lokiarchaeota archaeon]

tryptophanase [Candidatus Lokiarchaeota archaeon]

tryptophanase [Candidatus Lokiarchaeota archaeon]

tryptophanase [Candidatus Lokiarchaeota archaeon]

tryptophanase [Candidatus Lokiarchaeota archaeon]

tryptophanase [Candidatus Lokiarchaeota archaeon]

tryptophanase [Candidatus Lokiarchaeota archaeon]

tryptophanase [Candidatus Lokiarchaeota archaeon]

tryptophanase [Candidatus Lokiarchaeota archaeon]

tryptophanase [Candidatus Lokiarchaeota archaeon]

tryptophanase [Candidatus Lokiarchaeota archaeon]

tryptophanase [Candidatus Lokiarchaeota archaeon Loki_b31]

tryptophanase [Candidatus Lokiarchaeota archaeon]

tryptophanase [Candidatus Lokiarchaeota archaeon]

tryptophanase [Candidatus Lokiarchaeota archaeon]

Tryptophanase [Candidatus Heimdallarchaeota archaeon LC_3]

tryptophanase [Candidatus Bathyarchaeota archaeon]

tryptophanase [Candidatus Bathyarchaeota archaeon]

tryptophanase [Nanoarchaeota archaeon]

tryptophanase [archaeon]

tryptophanase [Candidatus Riflebacteria bacterium]

tryptophanase [Blastocystis sp. subtype 4]

uncharacterized protein [Blastocystis hominis]

tryptophanase [Blastocystis sp. ATCC 50177/Nand II]

0.1

