

The legacy of a century of introductions: Invasion debt of rainbow trout (*Oncorhynchus mykiss*) in Mpumalanga Province, South Africa

Rivers Research and Applications

Lerato Maimela, Christian T. Chimimba, Tsungai A. Zengeya

Lerato Maimela (✉), Centre of Excellence for Invasion Biology, Department of Zoology and Entomology, University of Pretoria, Hatfield, South Africa e-mail: lerato.maimela@zoology.up.ac.za

Supplementary material

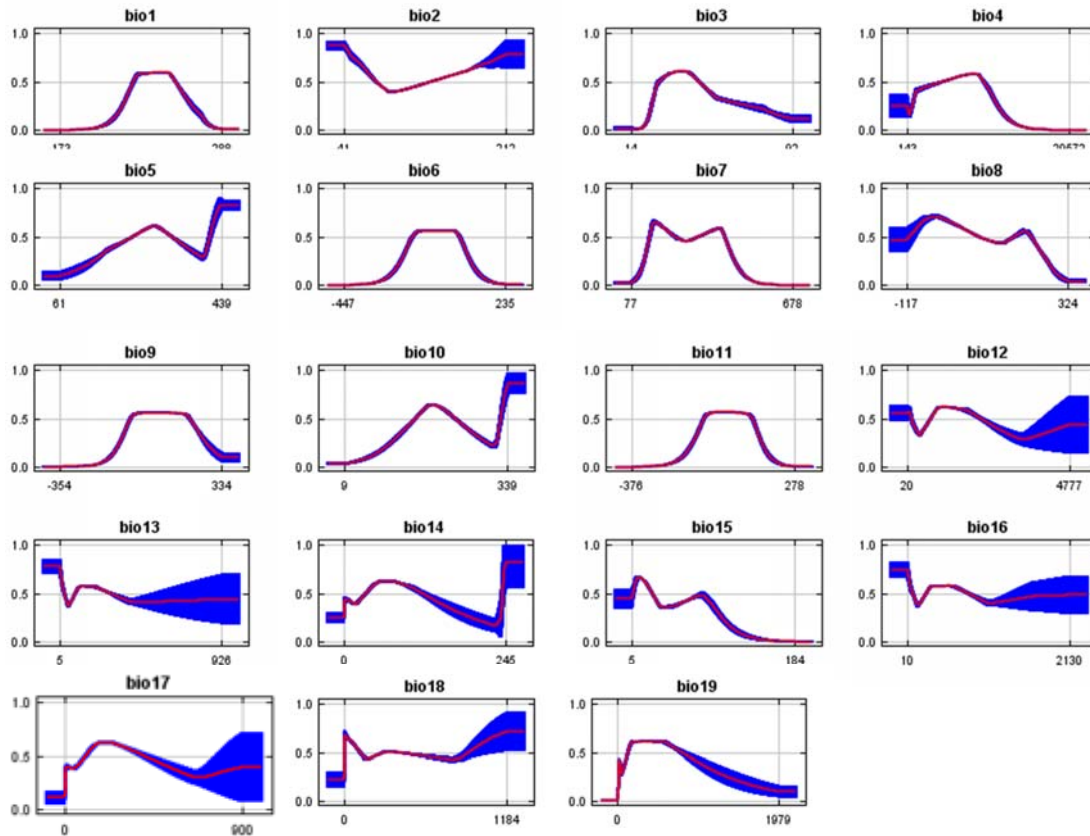


Figure S1: Response curves obtained from models used to project for current distribution of rainbow trout (*Oncorhynchus mykiss*) in Mpumalanga Province, South Africa. BIO1 = Annual Mean Temperature, BIO2 = Mean Diurnal Range (Mean of monthly (max temp - min temp)), BIO3 = Isothermality (BIO2/BIO7) (* 100), BIO4 = Temperature Seasonality (standard deviation *100), BIO5 = Max Temperature of Warmest Month, BIO6 = Min Temperature of Coldest Month, BIO7 = Temperature Annual Range (BIO5-BIO6), BIO8 = Mean Temperature of Wettest Quarter, BIO9 = Mean Temperature of Driest Quarter, BIO10 = Mean Temperature of Warmest Quarter, BIO11 = Mean Temperature of Coldest Quarter, BIO12 = Annual Precipitation, BIO13 = Precipitation of Wettest Month, BIO14 = Precipitation of Driest Month, BIO15 = Precipitation Seasonality (Coefficient of Variation), BIO16 = Precipitation of Wettest Quarter, BIO17 = Precipitation of Driest Quarter, BIO18 = Precipitation of Warmest Quarter, BIO19 = Precipitation of Coldest Quarter. Note that temperature values are in $^{\circ}\text{C} * 10$ (i.e. 354= 35.4 $^{\circ}\text{C}$) and the precipitation data is in mm.

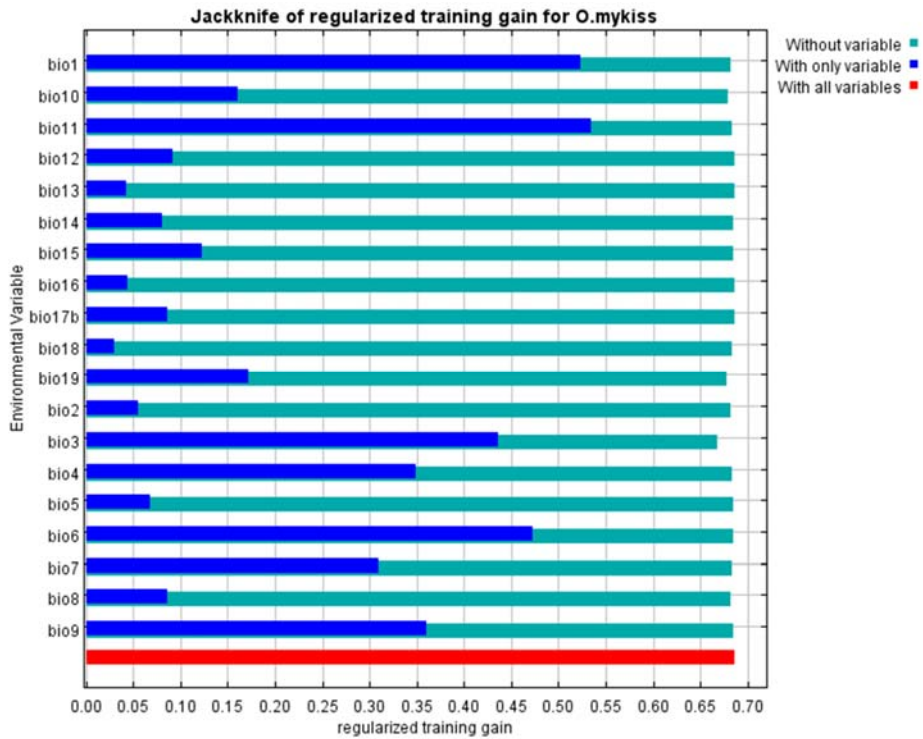


Figure S2: Jack-knife test results for predicted current distribution of rainbow trout (*Oncorhynchus mykiss*) in Mpumalanga Province, South Africa. BIO1 = Annual Mean Temperature, BIO2 = Mean Diurnal Range (Mean of monthly (max temp - min temp)), BIO3 = Isothermality (BIO2/BIO7) (* 100), BIO4 = Temperature Seasonality (standard deviation *100), BIO5 = Max Temperature of Warmest Month, BIO6 = Min Temperature of Coldest Month, BIO7 = Temperature Annual Range (BIO5-BIO6), BIO8 = Mean Temperature of Wettest Quarter, BIO9 = Mean Temperature of Driest Quarter, BIO10 = Mean Temperature of Warmest Quarter, BIO11 = Mean Temperature of Coldest Quarter, BIO12 = Annual Precipitation, BIO13 = Precipitation of Wettest Month, BIO14 = Precipitation of Driest Month, BIO15 = Precipitation Seasonality (Coefficient of Variation), BIO16 = Precipitation of Wettest Quarter, BIO17 = Precipitation of Driest Quarter, BIO18 = Precipitation of Warmest Quarter, BIO19 = Precipitation of Coldest Quarter.

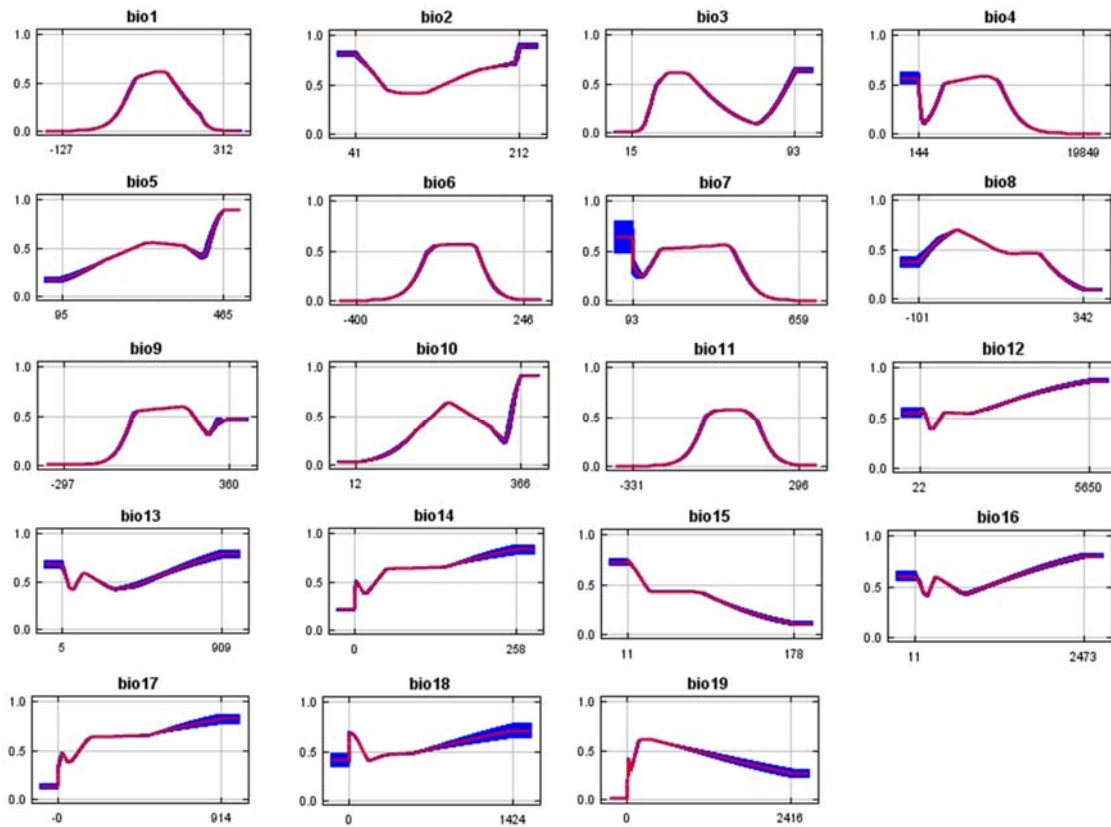


Figure S3: Response curves obtained from models used to project for RCP 4.5 (2050) scenario distribution of rainbow trout (*Oncorhynchus mykiss*) in Mpumalanga Province South Africa. BIO1 = Annual Mean Temperature, BIO2 = Mean Diurnal Range (Mean of monthly (max temp - min temp)), BIO3 = Isothermality (BIO2/BIO7) (* 100), BIO4 = Temperature Seasonality (standard deviation *100), BIO5 = Max Temperature of Warmest Month, BIO6 = Min Temperature of Coldest Month, BIO7 = Temperature Annual Range (BIO5-BIO6), BIO8 = Mean Temperature of Wettest Quarter, BIO9 = Mean Temperature of Driest Quarter, BIO10 = Mean Temperature of Warmest Quarter, BIO11 = Mean Temperature of Coldest Quarter, BIO12 = Annual Precipitation, BIO13 = Precipitation of Wettest Month, BIO14 = Precipitation of Driest Month, BIO15 = Precipitation Seasonality (Coefficient of Variation), BIO16 = Precipitation of Wettest Quarter, BIO17 = Precipitation of Driest Quarter, BIO18 = Precipitation of Warmest Quarter, BIO19 = Precipitation of Coldest Quarter. Note that temperature values are in $^{\circ}\text{C} * 10$ (i.e. 354= 35.4 $^{\circ}\text{C}$) and the precipitation data is in mm.

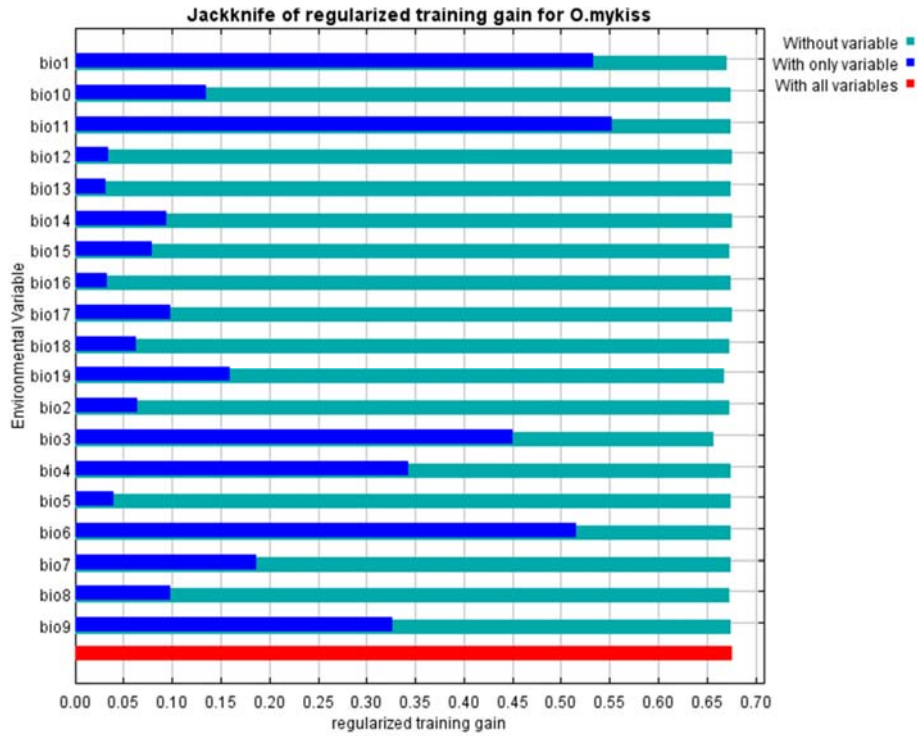


Figure S4: Jack-knife test results obtained from models used to project for rainbow trout (*Oncorhynchus mykiss*) distribution under RCP 4.5 (2050) in Mpumalanga Province, South Africa. BIO1 = Annual Mean Temperature, BIO2 = Mean Diurnal Range (Mean of monthly (max temp - min temp)), BIO3 = Isothermality (BIO2/BIO7) (* 100), BIO4 = Temperature Seasonality (standard deviation * 100), BIO5 = Max Temperature of Warmest Month, BIO6 = Min Temperature of Coldest Month, BIO7 = Temperature Annual Range (BIO5-BIO6), BIO8 = Mean Temperature of Wettest Quarter, BIO9 = Mean Temperature of Driest Quarter, BIO10 = Mean Temperature of Warmest Quarter, BIO11 = Mean Temperature of Coldest Quarter, BIO12 = Annual Precipitation, BIO13 = Precipitation of Wettest Month, BIO14 = Precipitation of Driest Month, BIO15 = Precipitation Seasonality (Coefficient of Variation), BIO16 = Precipitation of Wettest Quarter, BIO17 = Precipitation of Driest Quarter, BIO18 = Precipitation of Warmest Quarter, BIO19 = Precipitation of Coldest Quarter.

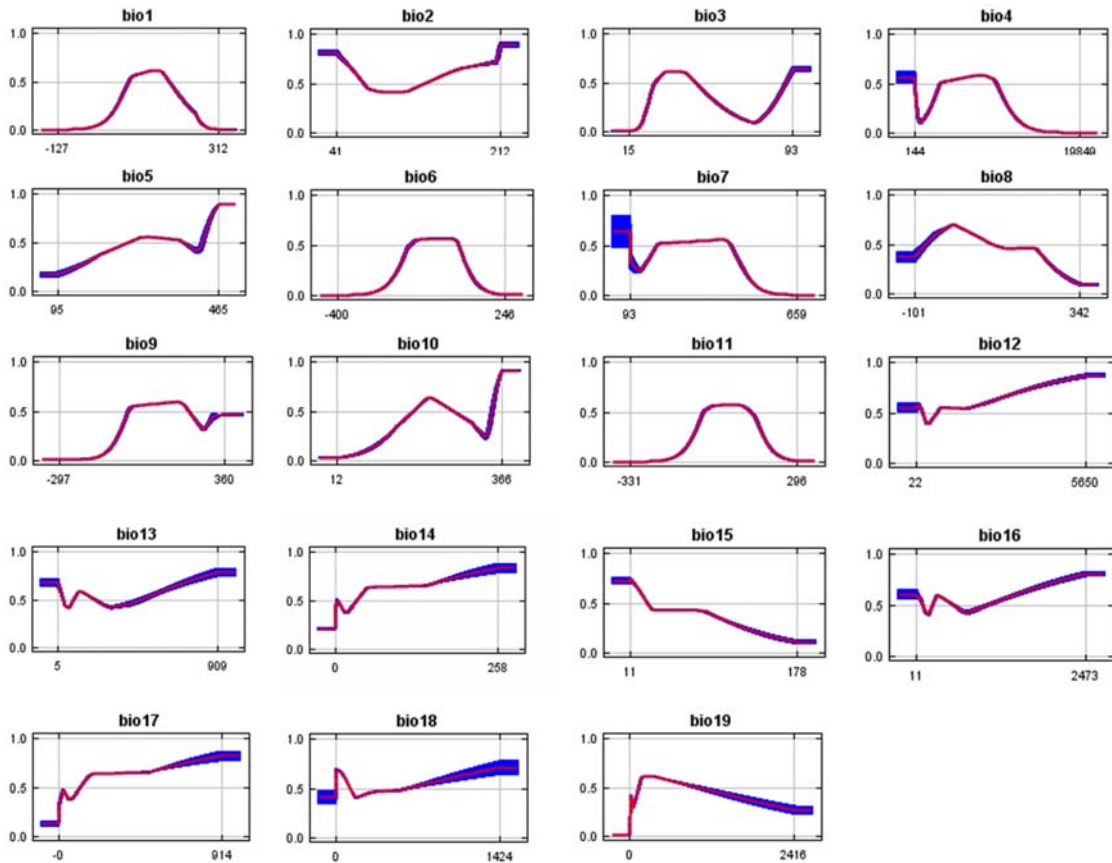


Figure S5: Response curves obtained from models used to project for RCP 4.5 (2070) scenario distribution of rainbow trout (*Oncorhynchus mykiss*) in Mpumalanga Province South Africa. BIO1 = Annual Mean Temperature, BIO2 = Mean Diurnal Range (Mean of monthly (max temp - min temp)), BIO3 = Isothermality (BIO2/BIO7) (* 100), BIO4 = Temperature Seasonality (standard deviation *100), BIO5 = Max Temperature of Warmest Month, BIO6 = Min Temperature of Coldest Month, BIO7 = Temperature Annual Range (BIO5-BIO6), BIO8 = Mean Temperature of Wettest Quarter, BIO9 = Mean Temperature of Driest Quarter, BIO10 = Mean Temperature of Warmest Quarter, BIO11 = Mean Temperature of Coldest Quarter, BIO12 = Annual Precipitation, BIO13 = Precipitation of Wettest Month, BIO14 = Precipitation of Driest Month, BIO15 = Precipitation Seasonality (Coefficient of Variation), BIO16 = Precipitation of Wettest Quarter, BIO17 = Precipitation of Driest Quarter, BIO18 = Precipitation of Warmest Quarter, BIO19 = Precipitation of Coldest Quarter. Note that temperature values are in $^{\circ}\text{C} * 10$ (i.e. 354= 35.4 $^{\circ}\text{C}$) and the precipitation data is in mm.

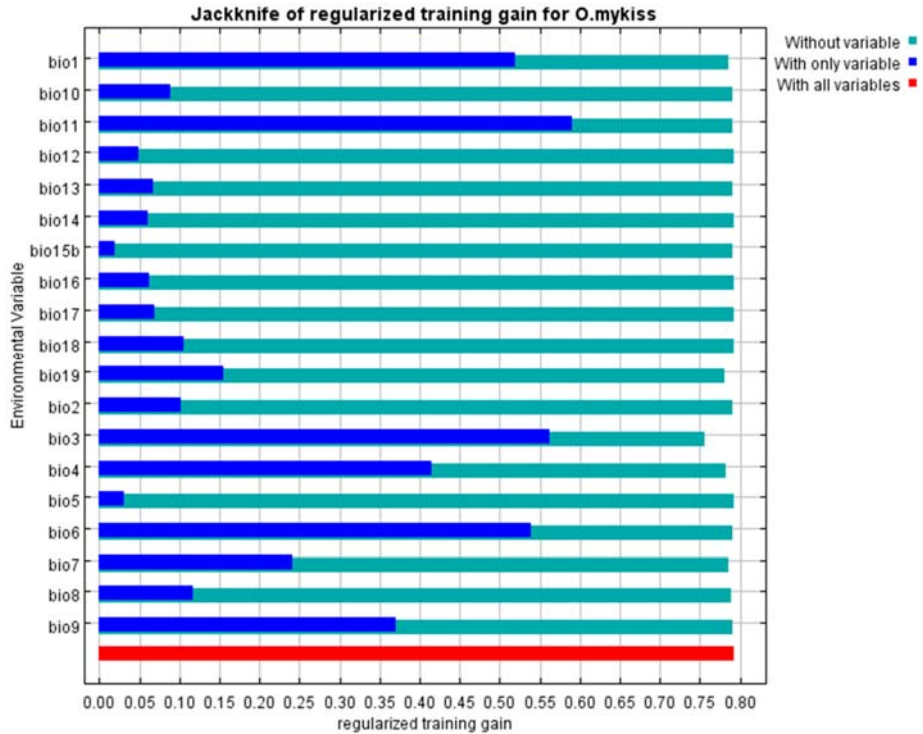


Figure S6: Jack-knife test results obtained from models used to project for rainbow trout (*Oncorhynchus mykiss*) distribution under RCP 4.5 (2070) in Mpumalanga Province, South Africa. BIO1 = Annual Mean Temperature, BIO2 = Mean Diurnal Range (Mean of monthly (max temp - min temp)), BIO3 = Isothermality (BIO2/BIO7) (* 100), BIO4 = Temperature Seasonality (standard deviation *100), BIO5 = Max Temperature of Warmest Month, BIO6 = Min Temperature of Coldest Month, BIO7 = Temperature Annual Range (BIO5-BIO6), BIO8 = Mean Temperature of Wettest Quarter, BIO9 = Mean Temperature of Driest Quarter, BIO10 = Mean Temperature of Warmest Quarter, BIO11 = Mean Temperature of Coldest Quarter, BIO12 = Annual Precipitation, BIO13 = Precipitation of Wettest Month, BIO14 = Precipitation of Driest Month, BIO15 = Precipitation Seasonality (Coefficient of Variation), BIO16 = Precipitation of Wettest Quarter, BIO17 = Precipitation of Driest Quarter, BIO18 = Precipitation of Warmest Quarter, BIO19 = Precipitation of Coldest Quarter.

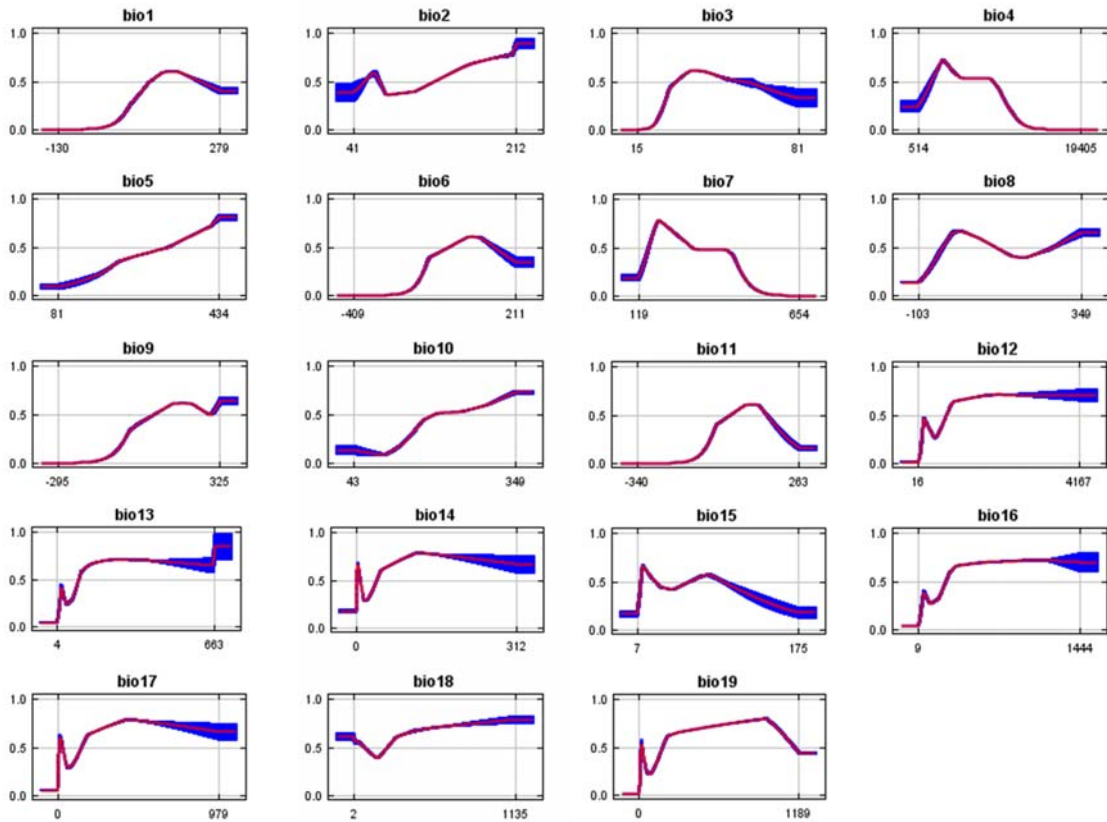


Figure S7: Response curves obtained from models used to project for RCP 8.5 (2050) scenario distribution of rainbow trout (*Oncorhynchus mykiss*) in Mpumalanga Province South Africa. BIO1 = Annual Mean Temperature, BIO2 = Mean Diurnal Range (Mean of monthly (max temp - min temp)), BIO3 = Isothermality (BIO2/BIO7) (* 100), BIO4 = Temperature Seasonality (standard deviation *100), BIO5 = Max Temperature of Warmest Month, BIO6 = Min Temperature of Coldest Month, BIO7 = Temperature Annual Range (BIO5-BIO6), BIO8 = Mean Temperature of Wettest Quarter, BIO9 = Mean Temperature of Driest Quarter, BIO10 = Mean Temperature of Warmest Quarter, BIO11 = Mean Temperature of Coldest Quarter, BIO12 = Annual Precipitation, BIO13 = Precipitation of Wettest Month, BIO14 = Precipitation of Driest Month, BIO15 = Precipitation Seasonality (Coefficient of Variation), BIO16 = Precipitation of Wettest Quarter, BIO17 = Precipitation of Driest Quarter, BIO18 = Precipitation of Warmest Quarter, BIO19 = Precipitation of Coldest Quarter. Note that temperature values are in $^{\circ}\text{C} * 10$ (i.e. 354= 35.4 $^{\circ}\text{C}$) and the precipitation data is in mm.

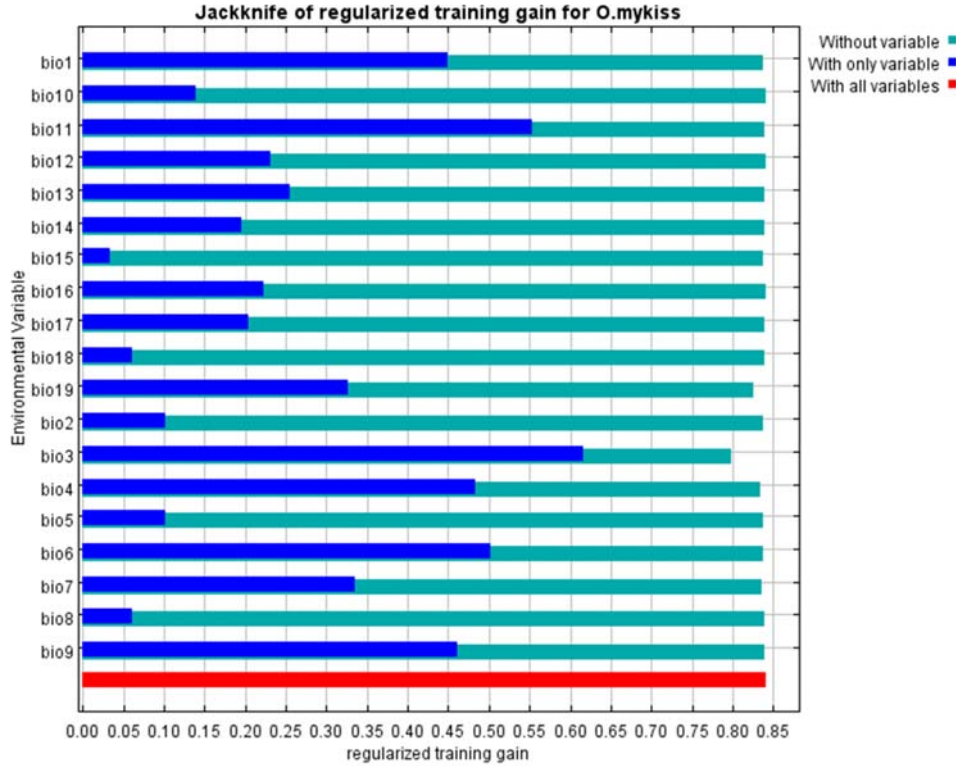


Figure S8: Jack-knife test results obtained from models used to project for rainbow trout (*Oncorhynchus mykiss*) distribution under RCP 8.5 (2050) in Mpumalanga Province, South Africa. BIO1 = Annual Mean Temperature, BIO2 = Mean Diurnal Range (Mean of monthly (max temp - min temp)), BIO3 = Isothermality (BIO2/BIO7) (* 100), BIO4 = Temperature Seasonality (standard deviation * 100), BIO5 = Max Temperature of Warmest Month, BIO6 = Min Temperature of Coldest Month, BIO7 = Temperature Annual Range (BIO5-BIO6), BIO8 = Mean Temperature of Wettest Quarter, BIO9 = Mean Temperature of Driest Quarter, BIO10 = Mean Temperature of Warmest Quarter, BIO11 = Mean Temperature of Coldest Quarter, BIO12 = Annual Precipitation, BIO13 = Precipitation of Wettest Month, BIO14 = Precipitation of Driest Month, BIO15 = Precipitation Seasonality (Coefficient of Variation), BIO16 = Precipitation of Wettest Quarter, BIO17 = Precipitation of Driest Quarter, BIO18 = Precipitation of Warmest Quarter, BIO19 = Precipitation of Coldest Quarter.

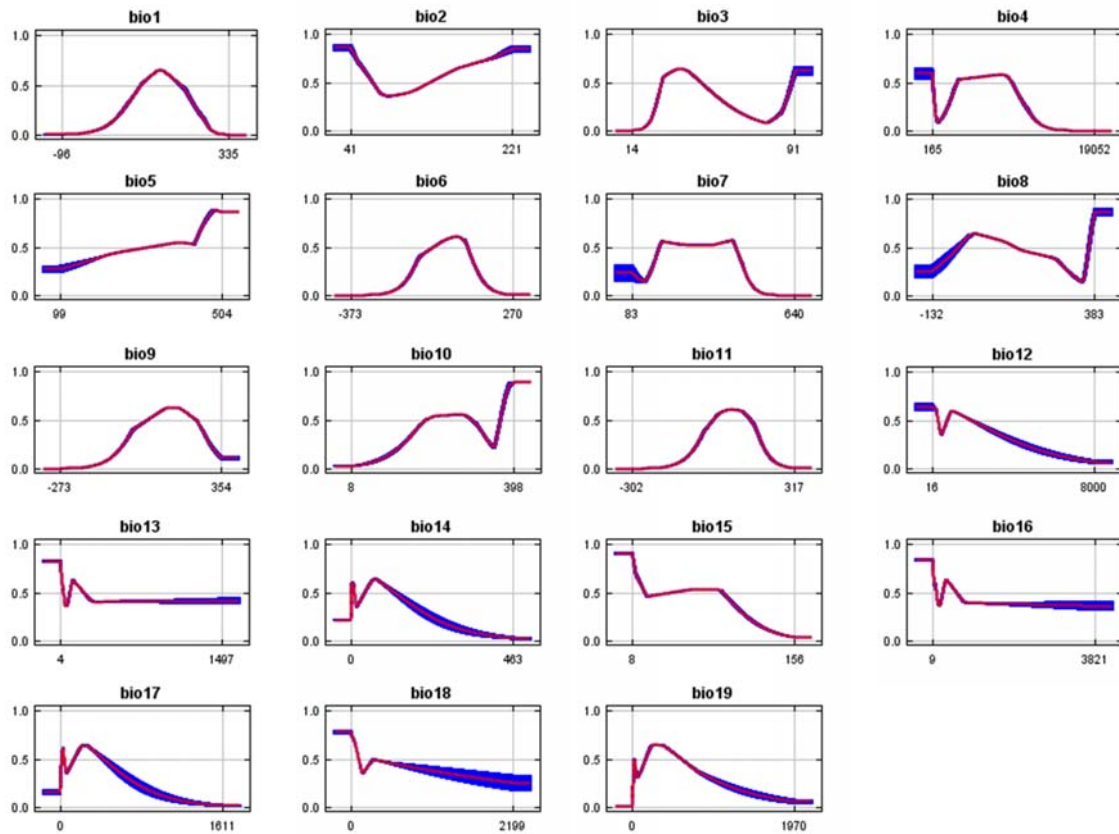


Figure S9: Response curves obtained from models used to project for RCP 8.5 (2070) scenario distribution of rainbow trout (*Oncorhynchus mykiss*) in Mpumalanga Province South Africa. BIO1 = Annual Mean Temperature, BIO2 = Mean Diurnal Range (Mean of monthly (max temp - min temp)), BIO3 = Isothermality (BIO2/BIO7) (* 100), BIO4 = Temperature Seasonality (standard deviation *100), BIO5 = Max Temperature of Warmest Month, BIO6 = Min Temperature of Coldest Month, BIO7 = Temperature Annual Range (BIO5-BIO6), BIO8 = Mean Temperature of Wettest Quarter, BIO9 = Mean Temperature of Driest Quarter, BIO10 = Mean Temperature of Warmest Quarter, BIO11 = Mean Temperature of Coldest Quarter, BIO12 = Annual Precipitation, BIO13 = Precipitation of Wettest Month, BIO14 = Precipitation of Driest Month, BIO15 = Precipitation Seasonality (Coefficient of Variation), BIO16 = Precipitation of Wettest Quarter, BIO17 = Precipitation of Driest Quarter, BIO18 = Precipitation of Warmest Quarter, BIO19 = Precipitation of Coldest Quarter. Note that temperature values are in $^{\circ}\text{C} * 10$ (i.e. 354= 35.4 $^{\circ}\text{C}$) and the precipitation data is in mm

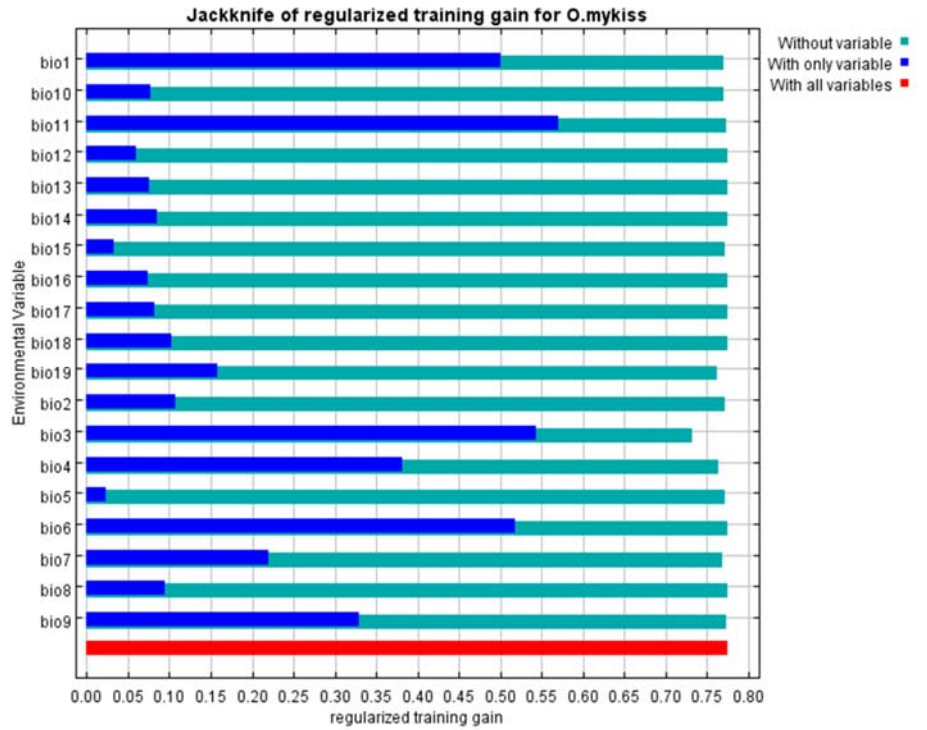


Figure S10: Jack-knife test results obtained from models used to project for rainbow trout (*Oncorhynchus mykiss*) distribution under RCP 8.5 (2070) in Mpumalanga Province, South Africa. BIO1 = Annual Mean Temperature, BIO2 = Mean Diurnal Range (Mean of monthly (max temp - min temp)), BIO3 = Isothermality (BIO2/BIO7) (* 100), BIO4 = Temperature Seasonality (standard deviation *100), BIO5 = Max Temperature of Warmest Month, BIO6 = Min Temperature of Coldest Month, BIO7 = Temperature Annual Range (BIO5-BIO6), BIO8 = Mean Temperature of Wettest Quarter, BIO9 = Mean Temperature of Driest Quarter, BIO10 = Mean Temperature of Warmest Quarter, BIO11 = Mean Temperature of Coldest Quarter, BIO12 = Annual Precipitation, BIO13 = Precipitation of Wettest Month, BIO14 = Precipitation of Driest Month, BIO15 = Precipitation Seasonality (Coefficient of Variation), BIO16 = Precipitation of Wettest Quarter, BIO17 = Precipitation of Driest Quarter, BIO18 = Precipitation of Warmest Quarter, BIO19 = Precipitation of Coldest Quarter.

Table S1. Global occurrence records of rainbow trout (*Oncorhynchus mykiss*) obtained from GBIF: Global Biodiversity Information Facility (GBIF) and the South African Institute for Aquatic Biodiversity (SAIAB) that were used to predict the potential distribution of rainbow trout (*Oncorhynchus mykiss*) under current and future (2050 and 2070) climatic conditions in Mpumalanga Province, South Africa.

Species	Latitude	Longitude	Species	Latitude	Longitude	Species	Latitude	Longitude
<i>Oncorhynchus mykiss</i>	-27.9069	29.8706	<i>Oncorhynchus mykiss</i>	51.0493	-3.5072	<i>Oncorhynchus mykiss</i>	22.0449	-159.5325
<i>Oncorhynchus mykiss</i>	-29.0350	29.7628	<i>Oncorhynchus mykiss</i>	53.1107	-1.5630	<i>Oncorhynchus mykiss</i>	19.5960	-155.5774
<i>Oncorhynchus mykiss</i>	-28.0250	30.5625	<i>Oncorhynchus mykiss</i>	54.2897	-0.5136	<i>Oncorhynchus mykiss</i>	42.0432	-90.3721
<i>Oncorhynchus mykiss</i>	-29.1111	29.4700	<i>Oncorhynchus mykiss</i>	51.1268	0.4516	<i>Oncorhynchus mykiss</i>	42.4754	-92.3100
<i>Oncorhynchus mykiss</i>	-29.1031	29.4808	<i>Oncorhynchus mykiss</i>	52.0837	-4.4525	<i>Oncorhynchus mykiss</i>	43.4749	-92.0770
<i>Oncorhynchus mykiss</i>	-29.1256	29.4406	<i>Oncorhynchus mykiss</i>	54.6161	-2.0580	<i>Oncorhynchus mykiss</i>	42.8717	-91.2026
<i>Oncorhynchus mykiss</i>	-29.1339	29.4367	<i>Oncorhynchus mykiss</i>	50.1990	-5.1450	<i>Oncorhynchus mykiss</i>	41.7713	-88.9453
<i>Oncorhynchus mykiss</i>	-29.1564	29.4183	<i>Oncorhynchus mykiss</i>	52.6990	0.6099	<i>Oncorhynchus mykiss</i>	40.5573	-89.5407
<i>Oncorhynchus mykiss</i>	-29.1561	29.4197	<i>Oncorhynchus mykiss</i>	54.9742	-4.4959	<i>Oncorhynchus mykiss</i>	42.1634	-87.4292
<i>Oncorhynchus mykiss</i>	-29.1414	29.4261	<i>Oncorhynchus mykiss</i>	54.2568	-6.6965	<i>Oncorhynchus mykiss</i>	38.5896	-86.0968
<i>Oncorhynchus mykiss</i>	-29.8323	29.5215	<i>Oncorhynchus mykiss</i>	57.5289	-2.0409	<i>Oncorhynchus mykiss</i>	39.5328	-85.7797
<i>Oncorhynchus mykiss</i>	-29.7500	29.2167	<i>Oncorhynchus mykiss</i>	53.2322	-3.2861	<i>Oncorhynchus mykiss</i>	41.3278	-85.7597
<i>Oncorhynchus mykiss</i>	-29.7444	29.2625	<i>Oncorhynchus mykiss</i>	52.9109	-9.1155	<i>Oncorhynchus mykiss</i>	38.3387	-87.3450
<i>Oncorhynchus mykiss</i>	-29.7958	29.3528	<i>Oncorhynchus mykiss</i>	56.1338	-3.8520	<i>Oncorhynchus mykiss</i>	37.4623	-94.7854
<i>Oncorhynchus mykiss</i>	-27.8856	29.7131	<i>Oncorhynchus mykiss</i>	56.1788	-5.4261	<i>Oncorhynchus mykiss</i>	37.2217	-98.7434
<i>Oncorhynchus mykiss</i>	-27.8856	29.7131	<i>Oncorhynchus mykiss</i>	54.9819	-8.3912	<i>Oncorhynchus mykiss</i>	38.9322	-94.7538
<i>Oncorhynchus mykiss</i>	-28.6958	28.9514	<i>Oncorhynchus mykiss</i>	51.6554	-8.7955	<i>Oncorhynchus mykiss</i>	38.4831	-100.9209
<i>Oncorhynchus mykiss</i>	-27.8778	29.7367	<i>Oncorhynchus mykiss</i>	57.3642	-5.4062	<i>Oncorhynchus mykiss</i>	38.6162	-83.1559
<i>Oncorhynchus mykiss</i>	-29.3333	30.2353	<i>Oncorhynchus mykiss</i>	60.2767	-1.1883	<i>Oncorhynchus mykiss</i>	37.3670	-84.0482
<i>Oncorhynchus mykiss</i>	-29.8444	29.2083	<i>Oncorhynchus mykiss</i>	55.8779	-2.2413	<i>Oncorhynchus mykiss</i>	36.7775	-87.7210
<i>Oncorhynchus mykiss</i>	-29.7792	29.2014	<i>Oncorhynchus mykiss</i>	57.5803	-3.6363	<i>Oncorhynchus mykiss</i>	37.3190	-85.7152
<i>Oncorhynchus mykiss</i>	-30.0181	29.1667	<i>Oncorhynchus mykiss</i>	52.1022	-2.5124	<i>Oncorhynchus mykiss</i>	37.4070	-82.4397
<i>Oncorhynchus mykiss</i>	-28.9361	29.2417	<i>Oncorhynchus mykiss</i>	57.2895	-7.3967	<i>Oncorhynchus mykiss</i>	39.0917	-84.5036
<i>Oncorhynchus mykiss</i>	-27.5597	30.4208	<i>Oncorhynchus mykiss</i>	53.1852	-7.6268	<i>Oncorhynchus mykiss</i>	30.4277	-91.1673
<i>Oncorhynchus mykiss</i>	-27.5189	30.2278	<i>Oncorhynchus mykiss</i>	49.7261	-124.6926	<i>Oncorhynchus mykiss</i>	39.3211	-76.6470
<i>Oncorhynchus mykiss</i>	-28.5667	29.1500	<i>Oncorhynchus mykiss</i>	50.6838	-127.3507	<i>Oncorhynchus mykiss</i>	46.5708	-68.3297
<i>Oncorhynchus mykiss</i>	-27.8611	29.7444	<i>Oncorhynchus mykiss</i>	46.5682	-124.1977	<i>Oncorhynchus mykiss</i>	44.3393	-70.4245
<i>Oncorhynchus mykiss</i>	-30.2456	29.1264	<i>Oncorhynchus mykiss</i>	49.2926	-123.0445	<i>Oncorhynchus mykiss</i>	44.5585	-82.3652
<i>Oncorhynchus mykiss</i>	-29.9597	29.8125	<i>Oncorhynchus mykiss</i>	48.3020	-124.0130	<i>Oncorhynchus mykiss</i>	47.9458	-88.9000
<i>Oncorhynchus mykiss</i>	-29.7542	29.4181	<i>Oncorhynchus mykiss</i>	51.5608	3.9529	<i>Oncorhynchus mykiss</i>	47.5788	-87.2626
<i>Oncorhynchus mykiss</i>	-29.3192	29.7161	<i>Oncorhynchus mykiss</i>	60.8179	10.8367	<i>Oncorhynchus mykiss</i>	47.6346	-90.6546
<i>Oncorhynchus mykiss</i>	-29.3375	29.9067	<i>Oncorhynchus mykiss</i>	60.2481	5.7748	<i>Oncorhynchus mykiss</i>	47.3691	-92.4045
<i>Oncorhynchus mykiss</i>	-29.3703	29.8611	<i>Oncorhynchus mykiss</i>	63.9094	11.2685	<i>Oncorhynchus mykiss</i>	44.5205	-93.0002
<i>Oncorhynchus mykiss</i>	-29.4242	29.5042	<i>Oncorhynchus mykiss</i>	59.5928	10.3295	<i>Oncorhynchus mykiss</i>	47.8939	-96.2828
<i>Oncorhynchus mykiss</i>	-29.3711	29.6214	<i>Oncorhynchus mykiss</i>	16.8000	-95.0167	<i>Oncorhynchus mykiss</i>	46.2851	-90.0764
<i>Oncorhynchus mykiss</i>	-29.2175	29.5556	<i>Oncorhynchus mykiss</i>	54.5800	-165.5000	<i>Oncorhynchus mykiss</i>	45.8636	-92.5065
<i>Oncorhynchus mykiss</i>	-29.2214	29.5458	<i>Oncorhynchus mykiss</i>	58.2500	-153.1600	<i>Oncorhynchus mykiss</i>	48.1665	-93.2409
<i>Oncorhynchus mykiss</i>	-29.2731	29.5194	<i>Oncorhynchus mykiss</i>	50.7000	-120.3500	<i>Oncorhynchus mykiss</i>	44.6798	-95.2034
<i>Oncorhynchus mykiss</i>	-29.3014	30.2278	<i>Oncorhynchus mykiss</i>	45.1167	-67.0833	<i>Oncorhynchus mykiss</i>	36.8574	-91.6584
<i>Oncorhynchus mykiss</i>	-29.3333	30.2353	<i>Oncorhynchus mykiss</i>	46.4667	-63.4333	<i>Oncorhynchus mykiss</i>	38.6697	-91.5530
<i>Oncorhynchus mykiss</i>	-29.7972	30.9931	<i>Oncorhynchus mykiss</i>	58.5000	-156.0000	<i>Oncorhynchus mykiss</i>	34.0117	-90.9709
<i>Oncorhynchus mykiss</i>	-29.4619	29.5367	<i>Oncorhynchus mykiss</i>	46.7872	13.6122	<i>Oncorhynchus mykiss</i>	46.2748	-106.6530
<i>Oncorhynchus mykiss</i>	-29.2756	30.1283	<i>Oncorhynchus mykiss</i>	-44.4431	168.8163	<i>Oncorhynchus mykiss</i>	45.3497	-106.4161
<i>Oncorhynchus mykiss</i>	-29.4911	29.8875	<i>Oncorhynchus mykiss</i>	38.9340	-120.0405	<i>Oncorhynchus mykiss</i>	46.7312	-108.8620
<i>Oncorhynchus mykiss</i>	-27.5189	30.2278	<i>Oncorhynchus mykiss</i>	43.6759	-72.7993	<i>Oncorhynchus mykiss</i>	47.9605	-106.4383
<i>Oncorhynchus mykiss</i>	-29.3333	30.2333	<i>Oncorhynchus mykiss</i>	-38.5995	176.6152	<i>Oncorhynchus mykiss</i>	48.5308	-108.6544
<i>Oncorhynchus mykiss</i>	-31.1595	28.1115	<i>Oncorhynchus mykiss</i>	-37.8368	176.0294	<i>Oncorhynchus mykiss</i>	48.3170	-111.9145
<i>Oncorhynchus mykiss</i>	-31.1746	28.1218	<i>Oncorhynchus mykiss</i>	-36.9531	175.6449	<i>Oncorhynchus mykiss</i>	47.0365	-111.5801
<i>Oncorhynchus mykiss</i>	-30.8950	28.2139	<i>Oncorhynchus mykiss</i>	-41.7181	173.1684	<i>Oncorhynchus mykiss</i>	48.8420	-113.6089
<i>Oncorhynchus mykiss</i>	-31.1744	28.1217	<i>Oncorhynchus mykiss</i>	-39.2528	173.9519	<i>Oncorhynchus mykiss</i>	36.0030	-84.0884
<i>Oncorhynchus mykiss</i>	-31.4928	28.4769	<i>Oncorhynchus mykiss</i>	-38.6007	175.5433	<i>Oncorhynchus mykiss</i>	35.8212	-81.2089
<i>Oncorhynchus mykiss</i>	-32.6252	26.9325	<i>Oncorhynchus mykiss</i>	-43.3695	172.6248	<i>Oncorhynchus mykiss</i>	36.7032	-79.0784
<i>Oncorhynchus mykiss</i>	-30.6404	25.5208	<i>Oncorhynchus mykiss</i>	-44.9412	169.2856	<i>Oncorhynchus mykiss</i>	41.2233	-101.6991
<i>Oncorhynchus mykiss</i>	-31.2250	28.0583	<i>Oncorhynchus mykiss</i>	-38.8814	175.9700	<i>Oncorhynchus mykiss</i>	41.8601	-103.4759
<i>Oncorhynchus mykiss</i>	-31.0833	28.3000	<i>Oncorhynchus mykiss</i>	-35.7992	173.6290	<i>Oncorhynchus mykiss</i>	41.3086	-96.3566

Species	Latitude	Longitude	Species	Latitude	Longitude	Species	Latitude	Longitude
<i>Oncorhynchus mykiss</i>	-30.9833	28.2611	<i>Oncorhynchus mykiss</i>	-37.9541	176.3453	<i>Oncorhynchus mykiss</i>	42.6684	-103.4746
<i>Oncorhynchus mykiss</i>	-30.9778	28.2778	<i>Oncorhynchus mykiss</i>	-45.0654	167.9895	<i>Oncorhynchus mykiss</i>	42.6518	-101.1472
<i>Oncorhynchus mykiss</i>	-30.8639	28.2000	<i>Oncorhynchus mykiss</i>	-44.7402	170.4937	<i>Oncorhynchus mykiss</i>	42.4867	-98.7263
<i>Oncorhynchus mykiss</i>	-30.9500	28.2000	<i>Oncorhynchus mykiss</i>	-44.9367	171.1380	<i>Oncorhynchus mykiss</i>	32.3742	-107.7203
<i>Oncorhynchus mykiss</i>	-30.8167	28.2000	<i>Oncorhynchus mykiss</i>	-38.0933	175.1029	<i>Oncorhynchus mykiss</i>	34.9387	-106.6833
<i>Oncorhynchus mykiss</i>	-31.1306	28.0861	<i>Oncorhynchus mykiss</i>	-41.1305	172.6250	<i>Oncorhynchus mykiss</i>	32.9068	-106.1186
<i>Oncorhynchus mykiss</i>	-31.0333	28.4153	<i>Oncorhynchus mykiss</i>	-42.3796	172.3127	<i>Oncorhynchus mykiss</i>	33.7762	-104.7229
<i>Oncorhynchus mykiss</i>	-31.1250	28.2333	<i>Oncorhynchus mykiss</i>	-35.4753	174.2987	<i>Oncorhynchus mykiss</i>	35.9066	-104.3379
<i>Oncorhynchus mykiss</i>	-31.2000	28.0806	<i>Oncorhynchus mykiss</i>	-44.5075	170.0543	<i>Oncorhynchus mykiss</i>	36.6931	-107.9286
<i>Oncorhynchus mykiss</i>	-31.0833	28.2972	<i>Oncorhynchus mykiss</i>	-46.1358	167.1210	<i>Oncorhynchus mykiss</i>	34.9231	-108.8894
<i>Oncorhynchus mykiss</i>	-30.9500	28.4500	<i>Oncorhynchus mykiss</i>	-39.7423	176.2688	<i>Oncorhynchus mykiss</i>	33.5726	-108.8999
<i>Oncorhynchus mykiss</i>	-31.0667	28.4833	<i>Oncorhynchus mykiss</i>	-39.3892	176.8690	<i>Oncorhynchus mykiss</i>	38.2402	-115.0849
<i>Oncorhynchus mykiss</i>	-30.9167	28.3667	<i>Oncorhynchus mykiss</i>	-43.2287	171.5607	<i>Oncorhynchus mykiss</i>	41.3273	-114.2798
<i>Oncorhynchus mykiss</i>	-31.1708	28.1200	<i>Oncorhynchus mykiss</i>	-39.5173	175.0515	<i>Oncorhynchus mykiss</i>	40.0624	-119.5635
<i>Oncorhynchus mykiss</i>	-31.1542	28.1167	<i>Oncorhynchus mykiss</i>	-42.8038	171.1293	<i>Oncorhynchus mykiss</i>	40.6278	-118.3451
<i>Oncorhynchus mykiss</i>	-31.1500	28.3333	<i>Oncorhynchus mykiss</i>	-39.5229	174.2349	<i>Oncorhynchus mykiss</i>	37.8499	-114.3339
<i>Oncorhynchus mykiss</i>	-31.1750	28.0717	<i>Oncorhynchus mykiss</i>	-38.1217	177.2860	<i>Oncorhynchus mykiss</i>	42.7369	-75.0861
<i>Oncorhynchus mykiss</i>	-30.7083	27.9444	<i>Oncorhynchus mykiss</i>	-38.7323	177.5903	<i>Oncorhynchus mykiss</i>	42.1954	-76.3411
<i>Oncorhynchus mykiss</i>	-30.9019	27.9111	<i>Oncorhynchus mykiss</i>	-45.4733	169.5729	<i>Oncorhynchus mykiss</i>	42.9859	-77.8596
<i>Oncorhynchus mykiss</i>	-30.2919	28.3947	<i>Oncorhynchus mykiss</i>	-41.2909	172.1502	<i>Oncorhynchus mykiss</i>	40.9025	-72.9442
<i>Oncorhynchus mykiss</i>	-30.2850	28.3722	<i>Oncorhynchus mykiss</i>	-37.6548	178.3042	<i>Oncorhynchus mykiss</i>	42.1525	-81.2267
<i>Oncorhynchus mykiss</i>	-30.2958	28.3275	<i>Oncorhynchus mykiss</i>	-40.1615	175.8180	<i>Oncorhynchus mykiss</i>	41.4462	-82.7689
<i>Oncorhynchus mykiss</i>	-30.9583	27.6083	<i>Oncorhynchus mykiss</i>	-45.8504	170.0325	<i>Oncorhynchus mykiss</i>	34.0512	-96.3387
<i>Oncorhynchus mykiss</i>	-30.8167	28.2000	<i>Oncorhynchus mykiss</i>	-44.0111	169.8126	<i>Oncorhynchus mykiss</i>	36.8482	-102.8740
<i>Oncorhynchus mykiss</i>	-30.8167	28.2000	<i>Oncorhynchus mykiss</i>	-41.2444	173.8091	<i>Oncorhynchus mykiss</i>	45.9157	-117.4610
<i>Oncorhynchus mykiss</i>	-30.8167	28.2000	<i>Oncorhynchus mykiss</i>	-35.1688	173.4333	<i>Oncorhynchus mykiss</i>	45.0890	-122.0223
<i>Oncorhynchus mykiss</i>	-30.8667	27.9500	<i>Oncorhynchus mykiss</i>	-40.4688	175.2422	<i>Oncorhynchus mykiss</i>	43.7114	-118.3596
<i>Oncorhynchus mykiss</i>	-30.8833	27.8833	<i>Oncorhynchus mykiss</i>	-37.0486	175.2491	<i>Oncorhynchus mykiss</i>	44.1099	-120.7941
<i>Oncorhynchus mykiss</i>	-30.8167	27.8667	<i>Oncorhynchus mykiss</i>	-37.3147	174.6845	<i>Oncorhynchus mykiss</i>	41.0473	-77.0499
<i>Oncorhynchus mykiss</i>	-30.7500	27.7167	<i>Oncorhynchus mykiss</i>	-43.6040	172.0291	<i>Oncorhynchus mykiss</i>	40.7691	-80.4337
<i>Oncorhynchus mykiss</i>	-30.8833	27.8833	<i>Oncorhynchus mykiss</i>	-46.1764	167.9138	<i>Oncorhynchus mykiss</i>	43.4195	-103.4614
<i>Oncorhynchus mykiss</i>	-32.5353	26.9769	<i>Oncorhynchus mykiss</i>	-39.3200	174.6708	<i>Oncorhynchus mykiss</i>	44.8091	-96.7236
<i>Oncorhynchus mykiss</i>	-32.5167	27.4500	<i>Oncorhynchus mykiss</i>	-36.1799	174.6303	<i>Oncorhynchus mykiss</i>	42.8509	-97.4680
<i>Oncorhynchus mykiss</i>	-33.8000	25.0167	<i>Oncorhynchus mykiss</i>	23.7298	-105.4950	<i>Oncorhynchus mykiss</i>	45.4191	-98.5017
<i>Oncorhynchus mykiss</i>	-32.7336	27.2964	<i>Oncorhynchus mykiss</i>	34.1039	-116.8067	<i>Oncorhynchus mykiss</i>	45.1511	-102.3926
<i>Oncorhynchus mykiss</i>	-32.7336	27.2964	<i>Oncorhynchus mykiss</i>	61.9822	-151.3959	<i>Oncorhynchus mykiss</i>	36.6052	-85.2917
<i>Oncorhynchus mykiss</i>	-25.1000	30.7833	<i>Oncorhynchus mykiss</i>	35.5998	-121.1075	<i>Oncorhynchus mykiss</i>	29.8693	-98.1977
<i>Oncorhynchus mykiss</i>	-26.1903	31.0503	<i>Oncorhynchus mykiss</i>	47.6845	-123.0250	<i>Oncorhynchus mykiss</i>	41.2349	-111.9989
<i>Oncorhynchus mykiss</i>	-33.8460	19.1295	<i>Oncorhynchus mykiss</i>	36.3910	-121.6285	<i>Oncorhynchus mykiss</i>	40.9742	-109.5694
<i>Oncorhynchus mykiss</i>	-32.5189	19.3506	<i>Oncorhynchus mykiss</i>	37.8784	-122.1834	<i>Oncorhynchus mykiss</i>	39.9703	-109.8014
<i>Oncorhynchus mykiss</i>	-32.5189	19.3506	<i>Oncorhynchus mykiss</i>	39.1761	-123.0157	<i>Oncorhynchus mykiss</i>	38.5654	-78.0098
<i>Oncorhynchus mykiss</i>	-33.5292	19.5400	<i>Oncorhynchus mykiss</i>	40.3074	-121.2493	<i>Oncorhynchus mykiss</i>	37.6135	-79.7420
<i>Oncorhynchus mykiss</i>	-33.5290	19.5402	<i>Oncorhynchus mykiss</i>	38.4822	-122.8323	<i>Oncorhynchus mykiss</i>	37.3278	-77.0303
<i>Oncorhynchus mykiss</i>	-33.4053	19.4181	<i>Oncorhynchus mykiss</i>	40.7302	-122.4954	<i>Oncorhynchus mykiss</i>	44.0402	-87.3413
<i>Oncorhynchus mykiss</i>	-33.8917	19.2788	<i>Oncorhynchus mykiss</i>	37.3888	-113.3153	<i>Oncorhynchus mykiss</i>	38.9708	-80.9548
<i>Oncorhynchus mykiss</i>	-33.8125	23.1750	<i>Oncorhynchus mykiss</i>	36.5610	-114.4455	<i>Oncorhynchus mykiss</i>	41.3832	-106.8072
<i>Oncorhynchus mykiss</i>	-32.6858	19.2775	<i>Oncorhynchus mykiss</i>	36.2841	-118.4353	<i>Oncorhynchus mykiss</i>	41.8188	-109.7038
<i>Oncorhynchus mykiss</i>	-33.7369	22.8208	<i>Oncorhynchus mykiss</i>	42.2129	-122.0924	<i>Oncorhynchus mykiss</i>	43.3985	-109.0995
<i>Oncorhynchus mykiss</i>	-32.5342	19.2289	<i>Oncorhynchus mykiss</i>	61.1933	-144.2819	<i>Oncorhynchus mykiss</i>	45.4158	-109.5711
<i>Oncorhynchus mykiss</i>	-33.3672	22.1761	<i>Oncorhynchus mykiss</i>	36.9732	-122.0231	<i>Oncorhynchus mykiss</i>	44.1999	-106.4136
<i>Oncorhynchus mykiss</i>	-33.3675	22.1789	<i>Oncorhynchus mykiss</i>	34.7947	-83.8908	<i>Oncorhynchus mykiss</i>	43.1587	-122.1509
<i>Oncorhynchus mykiss</i>	-32.5383	19.2564	<i>Oncorhynchus mykiss</i>	40.1550	-83.7883	<i>Oncorhynchus mykiss</i>	47.9267	-114.3980
<i>Oncorhynchus mykiss</i>	-33.3986	21.3992	<i>Oncorhynchus mykiss</i>	35.6750	-85.9756	<i>Oncorhynchus mykiss</i>	41.9373	-69.9911
<i>Oncorhynchus mykiss</i>	-33.3000	22.0522	<i>Oncorhynchus mykiss</i>	46.4875	-88.9244	<i>Oncorhynchus mykiss</i>	38.1500	-111.1670
<i>Oncorhynchus mykiss</i>	-33.5667	19.7000	<i>Oncorhynchus mykiss</i>	33.7264	-85.9550	<i>Oncorhynchus mykiss</i>	38.9349	-114.2444
<i>Oncorhynchus mykiss</i>	-33.9586	19.2978	<i>Oncorhynchus mykiss</i>	36.5564	-81.7492	<i>Oncorhynchus mykiss</i>	46.6036	-86.2059
<i>Oncorhynchus mykiss</i>	-33.9586	19.2978	<i>Oncorhynchus mykiss</i>	35.5433	-82.3539	<i>Oncorhynchus mykiss</i>	36.9499	-118.6009
<i>Oncorhynchus mykiss</i>	-33.9164	19.2908	<i>Oncorhynchus mykiss</i>	36.9483	-93.7933	<i>Oncorhynchus mykiss</i>	32.2393	-99.8809
<i>Oncorhynchus mykiss</i>	-33.2683	22.0489	<i>Oncorhynchus mykiss</i>	37.7908	-91.8283	<i>Oncorhynchus mykiss</i>	29.6386	-95.1839
<i>Oncorhynchus mykiss</i>	-33.1833	19.1569	<i>Oncorhynchus mykiss</i>	28.2575	-108.2097	<i>Oncorhynchus mykiss</i>	30.6032	-96.3027

Species	Latitude	Longitude	Species	Latitude	Longitude	Species	Latitude	Longitude
<i>Oncorhynchus mykiss</i>	-33.2069	19.1569	<i>Oncorhynchus mykiss</i>	39.6681	-78.6069	<i>Oncorhynchus mykiss</i>	42.2637	-79.7840
<i>Oncorhynchus mykiss</i>	-33.8367	19.1114	<i>Oncorhynchus mykiss</i>	39.3184	-120.6619	<i>Oncorhynchus mykiss</i>	34.8232	-102.3992
<i>Oncorhynchus mykiss</i>	-33.9303	19.1144	<i>Oncorhynchus mykiss</i>	42.8805	-72.3268	<i>Oncorhynchus mykiss</i>	35.6509	-101.6477
<i>Oncorhynchus mykiss</i>	-33.8167	19.1000	<i>Oncorhynchus mykiss</i>	43.1789	-71.1653	<i>Oncorhynchus mykiss</i>	31.8886	-97.7022
<i>Oncorhynchus mykiss</i>	-33.9500	19.3000	<i>Oncorhynchus mykiss</i>	45.0801	-71.3558	<i>Oncorhynchus mykiss</i>	32.3657	-95.9930
<i>Oncorhynchus mykiss</i>	-33.9500	19.3000	<i>Oncorhynchus mykiss</i>	44.3001	-71.9370	<i>Oncorhynchus mykiss</i>	33.0195	-97.0624
<i>Oncorhynchus mykiss</i>	-33.8500	18.9500	<i>Oncorhynchus mykiss</i>	-22.2867	-42.9817	<i>Oncorhynchus mykiss</i>	47.4900	-113.5390
<i>Oncorhynchus mykiss</i>	-33.7000	19.4000	<i>Oncorhynchus mykiss</i>	-28.0239	-49.3697	<i>Oncorhynchus mykiss</i>	42.5328	-82.7847
<i>Oncorhynchus mykiss</i>	-34.1000	18.4667	<i>Oncorhynchus mykiss</i>	-24.1792	-48.5703	<i>Oncorhynchus mykiss</i>	33.0570	-95.0640
<i>Oncorhynchus mykiss</i>	-33.7000	18.9333	<i>Oncorhynchus mykiss</i>	38.4422	-109.0426	<i>Oncorhynchus mykiss</i>	31.0514	-94.2711
<i>Oncorhynchus mykiss</i>	-33.8606	23.1714	<i>Oncorhynchus mykiss</i>	43.7520	-119.6595	<i>Oncorhynchus mykiss</i>	30.1352	-93.9213
<i>Oncorhynchus mykiss</i>	-33.0764	19.2169	<i>Oncorhynchus mykiss</i>	40.1184	-105.5414	<i>Oncorhynchus mykiss</i>	34.1115	-99.7526
<i>Oncorhynchus mykiss</i>	-33.0519	19.2058	<i>Oncorhynchus mykiss</i>	35.9745	-105.9174	<i>Oncorhynchus mykiss</i>	28.0644	-97.8776
<i>Oncorhynchus mykiss</i>	-33.8639	23.1517	<i>Oncorhynchus mykiss</i>	-41.8800	146.2300	<i>Oncorhynchus mykiss</i>	28.8818	-97.1332
<i>Oncorhynchus mykiss</i>	-34.1500	18.9333	<i>Oncorhynchus mykiss</i>	46.7400	-71.2900	<i>Oncorhynchus mykiss</i>	26.2095	-97.7303
<i>Oncorhynchus mykiss</i>	-33.2500	22.0333	<i>Oncorhynchus mykiss</i>	48.8200	-125.1500	<i>Oncorhynchus mykiss</i>	33.5802	-101.9163
<i>Oncorhynchus mykiss</i>	-33.0519	19.2058	<i>Oncorhynchus mykiss</i>	49.2097	8.0449	<i>Oncorhynchus mykiss</i>	31.0510	-98.1847
<i>Oncorhynchus mykiss</i>	-33.0519	19.2058	<i>Oncorhynchus mykiss</i>	40.6840	-75.3556	<i>Oncorhynchus mykiss</i>	35.8831	-100.1868
<i>Oncorhynchus mykiss</i>	-33.0764	19.2169	<i>Oncorhynchus mykiss</i>	17.2092	-96.4129	<i>Oncorhynchus mykiss</i>	31.5878	-96.5272
<i>Oncorhynchus mykiss</i>	-33.7000	18.9333	<i>Oncorhynchus mykiss</i>	40.4442	-111.7041	<i>Oncorhynchus mykiss</i>	31.4517	-100.4490
<i>Oncorhynchus mykiss</i>	-33.9333	18.8667	<i>Oncorhynchus mykiss</i>	44.2198	-85.7667	<i>Oncorhynchus mykiss</i>	34.4436	-101.0520
<i>Oncorhynchus mykiss</i>	-34.1000	18.4667	<i>Oncorhynchus mykiss</i>	64.8326	-147.6508	<i>Oncorhynchus mykiss</i>	32.9745	-116.7389
<i>Oncorhynchus mykiss</i>	-34.1000	18.8167	<i>Oncorhynchus mykiss</i>	64.1568	-145.8425	<i>Oncorhynchus mykiss</i>	34.4902	-120.2290
<i>Oncorhynchus mykiss</i>	-32.7336	27.2964	<i>Oncorhynchus mykiss</i>	63.1297	-145.5475	<i>Oncorhynchus mykiss</i>	34.3769	-119.3079
<i>Oncorhynchus mykiss</i>	-33.0519	19.2058	<i>Oncorhynchus mykiss</i>	34.8206	-86.8852	<i>Oncorhynchus mykiss</i>	34.0821	-118.6489
<i>Oncorhynchus mykiss</i>	-33.0519	19.2058	<i>Oncorhynchus mykiss</i>	31.6615	-88.0843	<i>Oncorhynchus mykiss</i>	32.0235	-102.5215
<i>Oncorhynchus mykiss</i>	-33.0764	19.2169	<i>Oncorhynchus mykiss</i>	30.4375	-87.9878	<i>Oncorhynchus mykiss</i>	26.5784	-99.1430
<i>Oncorhynchus mykiss</i>	-33.7000	18.9333	<i>Oncorhynchus mykiss</i>	36.4925	-92.8894	<i>Oncorhynchus mykiss</i>	32.8626	-98.5351
<i>Oncorhynchus mykiss</i>	-33.9333	18.8667	<i>Oncorhynchus mykiss</i>	34.1544	-93.7213	<i>Oncorhynchus mykiss</i>	31.8020	-95.1929
<i>Oncorhynchus mykiss</i>	-34.1000	18.4667	<i>Oncorhynchus mykiss</i>	35.9303	-93.9489	<i>Oncorhynchus mykiss</i>	30.4461	-99.8003
<i>Oncorhynchus mykiss</i>	-34.1000	18.8167	<i>Oncorhynchus mykiss</i>	35.4967	-93.0160	<i>Oncorhynchus mykiss</i>	31.7533	-106.4030
<i>Oncorhynchus mykiss</i>	-29.3206	29.2028	<i>Oncorhynchus mykiss</i>	34.6828	-91.3160	<i>Oncorhynchus mykiss</i>	47.6673	-111.3312
<i>Oncorhynchus mykiss</i>	-29.4089	29.3592	<i>Oncorhynchus mykiss</i>	35.7554	-91.6205	<i>Oncorhynchus mykiss</i>	46.1972	-118.9540
<i>Oncorhynchus mykiss</i>	-29.3672	29.4206	<i>Oncorhynchus mykiss</i>	34.4817	-114.3718	<i>Oncorhynchus mykiss</i>	40.1406	-115.4945
<i>Oncorhynchus mykiss</i>	-29.3568	29.0641	<i>Oncorhynchus mykiss</i>	35.0922	-114.6309	<i>Oncorhynchus mykiss</i>	44.9036	-124.0190
<i>Oncorhynchus mykiss</i>	-29.5569	29.2341	<i>Oncorhynchus mykiss</i>	34.1017	-111.2799	<i>Oncorhynchus mykiss</i>	37.3251	-80.8864
<i>Oncorhynchus mykiss</i>	-29.5430	29.2500	<i>Oncorhynchus mykiss</i>	36.1922	-111.7957	<i>Oncorhynchus mykiss</i>	32.6702	-90.6690
<i>Oncorhynchus mykiss</i>	-29.5569	29.2341	<i>Oncorhynchus mykiss</i>	36.9680	-111.4762	<i>Oncorhynchus mykiss</i>	39.7072	-82.6067
<i>Oncorhynchus mykiss</i>	-29.5608	29.2652	<i>Oncorhynchus mykiss</i>	31.7773	-109.3178	<i>Oncorhynchus mykiss</i>	44.4564	-108.0395
<i>Oncorhynchus mykiss</i>	-29.7250	29.1069	<i>Oncorhynchus mykiss</i>	41.4854	-120.0909	<i>Oncorhynchus mykiss</i>	34.8125	-111.5625
<i>Oncorhynchus mykiss</i>	-29.8980	29.1222	<i>Oncorhynchus mykiss</i>	35.5878	-116.3794	<i>Oncorhynchus mykiss</i>	34.1333	-109.2860
<i>Oncorhynchus mykiss</i>	-29.1711	28.4836	<i>Oncorhynchus mykiss</i>	33.7853	-114.5155	<i>Oncorhynchus mykiss</i>	44.8922	-73.6589
<i>Oncorhynchus mykiss</i>	-29.1833	28.4805	<i>Oncorhynchus mykiss</i>	38.1549	-119.3488	<i>Oncorhynchus mykiss</i>	35.2506	-112.2170
<i>Oncorhynchus mykiss</i>	-29.3277	28.4833	<i>Oncorhynchus mykiss</i>	38.1800	-104.1337	<i>Oncorhynchus mykiss</i>	32.8139	-109.8500
<i>Oncorhynchus mykiss</i>	-29.3250	28.4822	<i>Oncorhynchus mykiss</i>	39.4587	-102.5856	<i>Oncorhynchus mykiss</i>	35.8703	-114.6590
<i>Oncorhynchus mykiss</i>	-29.3261	28.4591	<i>Oncorhynchus mykiss</i>	40.6397	-106.4055	<i>Oncorhynchus mykiss</i>	32.3844	-110.7920
<i>Oncorhynchus mykiss</i>	-29.0136	28.5575	<i>Oncorhynchus mykiss</i>	38.9988	-108.0424	<i>Oncorhynchus mykiss</i>	31.4269	-110.4550
<i>Oncorhynchus mykiss</i>	-29.0144	28.5666	<i>Oncorhynchus mykiss</i>	37.7061	-105.8927	<i>Oncorhynchus mykiss</i>	41.3083	-122.9410
<i>Oncorhynchus mykiss</i>	-29.0161	28.5536	<i>Oncorhynchus mykiss</i>	39.5917	-107.1843	<i>Oncorhynchus mykiss</i>	46.8333	-91.2660
<i>Oncorhynchus mykiss</i>	-29.0177	28.5544	<i>Oncorhynchus mykiss</i>	40.3225	-102.4283	<i>Oncorhynchus mykiss</i>	39.0010	-115.4073
<i>Oncorhynchus mykiss</i>	-29.0194	28.5480	<i>Oncorhynchus mykiss</i>	39.3947	-105.3391	<i>Oncorhynchus mykiss</i>	47.7135	-102.2826
<i>Oncorhynchus mykiss</i>	-29.1958	28.4694	<i>Oncorhynchus mykiss</i>	41.9548	-73.4446	<i>Oncorhynchus mykiss</i>	47.5333	-100.8712
<i>Oncorhynchus mykiss</i>	-29.1797	28.4838	<i>Oncorhynchus mykiss</i>	41.5315	-71.8084	<i>Oncorhynchus mykiss</i>	38.2747	-112.5551
<i>Oncorhynchus mykiss</i>	-29.1655	28.4855	<i>Oncorhynchus mykiss</i>	39.7055	-75.6148	<i>Oncorhynchus mykiss</i>	39.5805	-111.2369
<i>Oncorhynchus mykiss</i>	-29.1616	28.4794	<i>Oncorhynchus mykiss</i>	38.7766	-75.3317	<i>Oncorhynchus mykiss</i>	40.4931	-108.8137
<i>Oncorhynchus mykiss</i>	-29.0833	28.4922	<i>Oncorhynchus mykiss</i>	30.5711	-86.5448	<i>Oncorhynchus mykiss</i>	37.6700	-109.4440
<i>Oncorhynchus mykiss</i>	-29.0711	28.4700	<i>Oncorhynchus mykiss</i>	34.1340	-84.6284	<i>Oncorhynchus mykiss</i>	38.8794	-111.5501
<i>Oncorhynchus mykiss</i>	-29.1022	28.4961	<i>Oncorhynchus mykiss</i>	34.0666	-82.4651	<i>Oncorhynchus mykiss</i>	41.6796	-118.7185
<i>Oncorhynchus mykiss</i>	-29.1000	28.4986	<i>Oncorhynchus mykiss</i>	33.2961	-81.8624	<i>Oncorhynchus mykiss</i>	41.6324	-116.1469
<i>Oncorhynchus mykiss</i>	-29.1527	28.4888	<i>Oncorhynchus mykiss</i>	32.1311	-84.6724	<i>Oncorhynchus mykiss</i>	39.5833	-118.6676

Species	Latitude	Longitude	Species	Latitude	Longitude	Species	Latitude	Longitude
<i>Oncorhynchus mykiss</i>	-29.1527	28.4888	<i>Oncorhynchus mykiss</i>	21.4531	-158.0054	<i>Oncorhynchus mykiss</i>	40.8249	-119.5373
<i>Oncorhynchus mykiss</i>	-29.1852	28.4797	<i>Oncorhynchus mykiss</i>	66.2305	19.7718	<i>Oncorhynchus mykiss</i>	52.0715	5.5524
<i>Oncorhynchus mykiss</i>	-29.0194	28.5480	<i>Oncorhynchus mykiss</i>	59.2761	18.1912	<i>Oncorhynchus mykiss</i>	5.2752	-74.0236
<i>Oncorhynchus mykiss</i>	-29.1797	28.4838	<i>Oncorhynchus mykiss</i>	48.3400	11.6400	<i>Oncorhynchus mykiss</i>	18.1508	-96.8556
<i>Oncorhynchus mykiss</i>	-29.1833	28.4805	<i>Oncorhynchus mykiss</i>	30.7923	-115.7461	<i>Oncorhynchus mykiss</i>	19.2953	-99.3533
<i>Oncorhynchus mykiss</i>	-29.0833	28.5088	<i>Oncorhynchus mykiss</i>	-32.9106	-70.3000	<i>Oncorhynchus mykiss</i>	29.8796	-108.7343
<i>Oncorhynchus mykiss</i>	-29.3519	28.5202	<i>Oncorhynchus mykiss</i>	40.1413	-123.8083	<i>Oncorhynchus mykiss</i>	55.5720	-132.5519
<i>Oncorhynchus mykiss</i>	-28.7332	28.6166	<i>Oncorhynchus mykiss</i>	24.4290	-105.9518	<i>Oncorhynchus mykiss</i>	-31.5766	147.7204
<i>Oncorhynchus mykiss</i>	-28.7332	28.6166	<i>Oncorhynchus mykiss</i>	35.2911	-118.6269	<i>Oncorhynchus mykiss</i>	46.6257	-120.5502
<i>Oncorhynchus mykiss</i>	-28.7667	28.6166	<i>Oncorhynchus mykiss</i>	60.5680	-137.3256	<i>Oncorhynchus mykiss</i>	61.8640	9.3088
<i>Oncorhynchus mykiss</i>	-28.7667	28.6333	<i>Oncorhynchus mykiss</i>	36.7517	139.4475	<i>Oncorhynchus mykiss</i>	58.6241	8.9241
<i>Oncorhynchus mykiss</i>	-29.0167	28.5499	<i>Oncorhynchus mykiss</i>	54.2375	-124.1771	<i>Oncorhynchus mykiss</i>	68.5126	15.3731
<i>Oncorhynchus mykiss</i>	-29.1667	28.4832	<i>Oncorhynchus mykiss</i>	51.9757	-122.5596	<i>Oncorhynchus mykiss</i>	65.9948	12.3104
<i>Oncorhynchus mykiss</i>	-29.0832	28.5000	<i>Oncorhynchus mykiss</i>	60.2302	-158.5170	<i>Oncorhynchus mykiss</i>	58.0853	6.7525
<i>Oncorhynchus mykiss</i>	-29.3327	29.4207	<i>Oncorhynchus mykiss</i>	60.6889	-146.3234	<i>Oncorhynchus mykiss</i>	64.2278	13.4095
<i>Oncorhynchus mykiss</i>	-29.0349	29.7628	<i>Oncorhynchus mykiss</i>	40.2146	20.6468	<i>Oncorhynchus mykiss</i>	62.3206	6.2309
<i>Oncorhynchus mykiss</i>	-29.9113	29.1182	<i>Oncorhynchus mykiss</i>	50.9409	10.7403	<i>Oncorhynchus mykiss</i>	63.2497	8.3332
<i>Oncorhynchus mykiss</i>	-28.0249	30.5625	<i>Oncorhynchus mykiss</i>	46.9959	-121.9199	<i>Oncorhynchus mykiss</i>	64.9238	11.0542
<i>Oncorhynchus mykiss</i>	-28.6867	28.6716	<i>Oncorhynchus mykiss</i>	49.7040	-116.8896	<i>Oncorhynchus mykiss</i>	59.2176	5.4058
<i>Oncorhynchus mykiss</i>	-27.9069	29.8705	<i>Oncorhynchus mykiss</i>	52.2556	-120.2230	<i>Oncorhynchus mykiss</i>	70.0208	20.9726
<i>Oncorhynchus mykiss</i>	-28.8785	28.8330	<i>Oncorhynchus mykiss</i>	54.2870	-130.2801	<i>Oncorhynchus mykiss</i>	62.5450	11.4971
<i>Oncorhynchus mykiss</i>	-28.9219	29.0483	<i>Oncorhynchus mykiss</i>	50.0034	-123.1227	<i>Oncorhynchus mykiss</i>	69.3340	23.9874
<i>Oncorhynchus mykiss</i>	-29.4088	29.3591	<i>Oncorhynchus mykiss</i>	50.4667	-126.2826	<i>Oncorhynchus mykiss</i>	45.6992	-87.4072
<i>Oncorhynchus mykiss</i>	-29.3672	29.4206	<i>Oncorhynchus mykiss</i>	51.6786	-127.1887	<i>Oncorhynchus mykiss</i>	45.0142	-85.0300
<i>Oncorhynchus mykiss</i>	-29.5314	29.2591	<i>Oncorhynchus mykiss</i>	53.1508	-121.5979	<i>Oncorhynchus mykiss</i>	37.2502	-119.7513
<i>Oncorhynchus mykiss</i>	-29.3206	29.2028	<i>Oncorhynchus mykiss</i>	50.9911	-118.1756	<i>Oncorhynchus mykiss</i>	40.5198	-82.0999
<i>Oncorhynchus mykiss</i>	-29.4088	29.3591	<i>Oncorhynchus mykiss</i>	50.5086	-116.0967	<i>Oncorhynchus mykiss</i>	64.0003	-150.0003
<i>Oncorhynchus mykiss</i>	-29.3672	29.4206	<i>Oncorhynchus mykiss</i>	-17.2247	-65.8917	<i>Oncorhynchus mykiss</i>	62.3933	-96.8182
<i>Oncorhynchus mykiss</i>	59.4664	12.5934	<i>Oncorhynchus mykiss</i>	57.1167	-127.5667	<i>Oncorhynchus mykiss</i>	56.5256	15.5359
<i>Oncorhynchus mykiss</i>	45.1265	-116.0222	<i>Oncorhynchus mykiss</i>	54.8167	-127.2167	<i>Oncorhynchus mykiss</i>	65.4756	21.5316
<i>Oncorhynchus mykiss</i>	43.9555	-115.8586	<i>Oncorhynchus mykiss</i>	53.3667	-117.7500	<i>Oncorhynchus mykiss</i>	-0.1383	-77.6217
<i>Oncorhynchus mykiss</i>	43.1393	-115.5378	<i>Oncorhynchus mykiss</i>	57.6167	-128.8000	<i>Oncorhynchus mykiss</i>	-33.2683	22.0489
<i>Oncorhynchus mykiss</i>	48.1351	-116.1557	<i>Oncorhynchus mykiss</i>	49.4333	-126.9667	<i>Oncorhynchus mykiss</i>	-27.8611	29.7444
<i>Oncorhynchus mykiss</i>	46.7860	-116.8026	<i>Oncorhynchus mykiss</i>	48.8500	-126.8667	<i>Oncorhynchus mykiss</i>	-33.2069	19.1569
<i>Oncorhynchus mykiss</i>	45.8933	-115.8886	<i>Oncorhynchus mykiss</i>	56.2833	-120.2167	<i>Oncorhynchus mykiss</i>	-30.2456	29.1264
<i>Oncorhynchus mykiss</i>	43.8183	-111.7415	<i>Oncorhynchus mykiss</i>	54.1167	-126.4333	<i>Oncorhynchus mykiss</i>	-29.0144	28.5667
<i>Oncorhynchus mykiss</i>	48.9687	-116.2096	<i>Oncorhynchus mykiss</i>	52.2167	-125.3833	<i>Oncorhynchus mykiss</i>	-29.3333	30.2353
<i>Oncorhynchus mykiss</i>	44.9488	-113.7782	<i>Oncorhynchus mykiss</i>	57.5722	-154.4625	<i>Oncorhynchus mykiss</i>	-30.9500	27.5833
<i>Oncorhynchus mykiss</i>	44.2116	-114.1390	<i>Oncorhynchus mykiss</i>	53.0000	-119.6667	<i>Oncorhynchus mykiss</i>	-30.6404	25.5208
<i>Oncorhynchus mykiss</i>	43.0791	-112.6886	<i>Oncorhynchus mykiss</i>	54.0333	-117.0500	<i>Oncorhynchus mykiss</i>	59.7700	-155.6600
<i>Oncorhynchus mykiss</i>	42.3573	-112.4478	<i>Oncorhynchus mykiss</i>	53.5833	-122.9167	<i>Oncorhynchus mykiss</i>	63.0000	-150.0000
<i>Oncorhynchus mykiss</i>	47.4569	-116.8021	<i>Oncorhynchus mykiss</i>	53.1667	-126.1833	<i>Oncorhynchus mykiss</i>	58.3800	-134.6300
<i>Oncorhynchus mykiss</i>	42.1431	-114.7349	<i>Oncorhynchus mykiss</i>	49.2500	-121.2667	<i>Oncorhynchus mykiss</i>	55.9100	-130.7700
<i>Oncorhynchus mykiss</i>	42.3510	-115.9015	<i>Oncorhynchus mykiss</i>	33.1000	-5.1667	<i>Oncorhynchus mykiss</i>	56.2300	-134.6500
<i>Oncorhynchus mykiss</i>	42.8623	-117.6415	<i>Oncorhynchus mykiss</i>	40.3275	-76.5075	<i>Oncorhynchus mykiss</i>	54.3653	-119.8736
<i>Oncorhynchus mykiss</i>	44.3923	-116.8513	<i>Oncorhynchus mykiss</i>	42.7711	-106.5320	<i>Oncorhynchus mykiss</i>	4.4893	-74.0322
<i>Oncorhynchus mykiss</i>	42.0681	-111.3174	<i>Oncorhynchus mykiss</i>	44.5428	-109.3830	<i>Oncorhynchus mykiss</i>	6.6793	-75.4463
<i>Oncorhynchus mykiss</i>	43.4281	-113.8234	<i>Oncorhynchus mykiss</i>	57.9167	-145.4167	<i>Oncorhynchus mykiss</i>	-11.9167	-75.9167
<i>Oncorhynchus mykiss</i>	46.6038	-114.3586	<i>Oncorhynchus mykiss</i>	-37.4686	145.8160	<i>Oncorhynchus mykiss</i>	-13.5911	-70.9570
<i>Oncorhynchus mykiss</i>	49.0050	-117.6218	<i>Oncorhynchus mykiss</i>	-38.7700	143.4000	<i>Oncorhynchus mykiss</i>	1.2889	34.7401
<i>Oncorhynchus mykiss</i>	46.9381	-115.2717	<i>Oncorhynchus mykiss</i>	-36.2861	146.7280	<i>Oncorhynchus mykiss</i>	4.9082	-75.4430
<i>Oncorhynchus mykiss</i>	47.8944	-118.3415	<i>Oncorhynchus mykiss</i>	-31.1675	151.5800	<i>Oncorhynchus mykiss</i>	38.8372	-117.3870
<i>Oncorhynchus mykiss</i>	44.4925	-111.2828	<i>Oncorhynchus mykiss</i>	-36.1300	144.7500	<i>Oncorhynchus mykiss</i>	36.0000	-109.0000
<i>Oncorhynchus mykiss</i>	45.9158	-114.4604	<i>Oncorhynchus mykiss</i>	-36.8800	146.8700	<i>Oncorhynchus mykiss</i>	45.3700	-111.6210
<i>Oncorhynchus mykiss</i>	51.4320	-1.0570	<i>Oncorhynchus mykiss</i>	7.2500	39.7500	<i>Oncorhynchus mykiss</i>	47.8538	-120.6800
<i>Oncorhynchus mykiss</i>	50.6510	-96.5680	<i>Oncorhynchus mykiss</i>	41.2209	-87.9768	<i>Oncorhynchus mykiss</i>	9.5594	-83.8032
<i>Oncorhynchus mykiss</i>	-54.7816	-68.2124	<i>Oncorhynchus mykiss</i>	65.4745	29.3788	<i>Oncorhynchus mykiss</i>	58.9431	-157.2052
<i>Oncorhynchus mykiss</i>	60.1083	-149.4417	<i>Oncorhynchus mykiss</i>	48.5999	13.4547	<i>Oncorhynchus mykiss</i>	-42.7586	146.9710
<i>Oncorhynchus mykiss</i>	34.1200	36.0200	<i>Oncorhynchus mykiss</i>	35.0724	135.9790	<i>Oncorhynchus mykiss</i>	-35.2830	138.7660
<i>Oncorhynchus mykiss</i>	45.3208	-107.9070	<i>Oncorhynchus mykiss</i>	34.4106	135.6300	<i>Oncorhynchus mykiss</i>	-34.1660	140.7500

Species	Latitude	Longitude	Species	Latitude	Longitude	Species	Latitude	Longitude
<i>Oncorhynchus mykiss</i>	0.0000	-99.0000	<i>Oncorhynchus mykiss</i>	32.8800	35.6300	<i>Oncorhynchus mykiss</i>	-35.7000	137.1000
<i>Oncorhynchus mykiss</i>	62.8286	17.1241	<i>Oncorhynchus mykiss</i>	49.5900	18.5300	<i>Oncorhynchus mykiss</i>	-34.0391	139.6786
<i>Oncorhynchus mykiss</i>	39.7161	-121.6350	<i>Oncorhynchus mykiss</i>	50.1600	15.8100	<i>Oncorhynchus mykiss</i>	47.6735	-64.9966
<i>Oncorhynchus mykiss</i>	43.5859	-106.9530	<i>Oncorhynchus mykiss</i>	-32.5333	115.7167	<i>Oncorhynchus mykiss</i>	52.5198	13.4385
<i>Oncorhynchus mykiss</i>	29.6832	-99.7469	<i>Oncorhynchus mykiss</i>	-34.4167	116.0167	<i>Oncorhynchus mykiss</i>	61.6847	17.9954
<i>Oncorhynchus mykiss</i>	27.1803	-107.1819	<i>Oncorhynchus mykiss</i>	-45.8771	-67.4833	<i>Oncorhynchus mykiss</i>	-37.2264	143.8350
<i>Oncorhynchus mykiss</i>	-43.3740	-65.8048	<i>Oncorhynchus mykiss</i>	-50.2167	-71.4333	<i>Oncorhynchus mykiss</i>	31.9953	130.7720
<i>Oncorhynchus mykiss</i>	35.4000	-87.5128	<i>Oncorhynchus mykiss</i>	-52.2200	-71.4400	<i>Oncorhynchus mykiss</i>	39.7400	140.1300
<i>Oncorhynchus mykiss</i>	28.1168	-99.8379	<i>Oncorhynchus mykiss</i>	44.4322	-118.7895	<i>Oncorhynchus mykiss</i>	47.3781	-84.5667
<i>Oncorhynchus mykiss</i>	37.8038	-118.2715	<i>Oncorhynchus mykiss</i>	44.2212	-124.0594	<i>Oncorhynchus mykiss</i>	43.1135	-123.5078
<i>Oncorhynchus mykiss</i>	33.3012	-79.7121	<i>Oncorhynchus mykiss</i>	48.5106	-122.3375	<i>Oncorhynchus mykiss</i>	14.6500	98.5667
<i>Oncorhynchus mykiss</i>	38.4735	-107.1922	<i>Oncorhynchus mykiss</i>	34.7116	-77.0710	<i>Oncorhynchus mykiss</i>	-41.2261	-72.6856
<i>Oncorhynchus mykiss</i>	37.4107	-107.5164	<i>Oncorhynchus mykiss</i>	51.0500	-114.0833	<i>Oncorhynchus mykiss</i>	33.1799	-108.2065
<i>Oncorhynchus mykiss</i>	37.2186	-105.0469	<i>Oncorhynchus mykiss</i>	53.6167	-114.0667	<i>Oncorhynchus mykiss</i>	47.2239	-94.8578
<i>Oncorhynchus mykiss</i>	38.6915	-105.0502	<i>Oncorhynchus mykiss</i>	53.3292	-116.0372	<i>Oncorhynchus mykiss</i>	42.5583	-85.7222
<i>Oncorhynchus mykiss</i>	37.6281	-89.0960	<i>Oncorhynchus mykiss</i>	59.5500	-112.2333	<i>Oncorhynchus mykiss</i>	59.5458	-154.2858
<i>Oncorhynchus mykiss</i>	41.9088	-105.2907	<i>Oncorhynchus mykiss</i>	50.2333	-114.2000	<i>Oncorhynchus mykiss</i>	48.2066	-2.7259
<i>Oncorhynchus mykiss</i>	41.9497	-108.0112	<i>Oncorhynchus mykiss</i>	49.5500	-113.7667	<i>Oncorhynchus mykiss</i>	49.1504	1.9720
<i>Oncorhynchus mykiss</i>	45.4272	-75.7028	<i>Oncorhynchus mykiss</i>	52.0833	-114.4833	<i>Oncorhynchus mykiss</i>	44.5137	6.3350
<i>Oncorhynchus mykiss</i>	34.7419	-81.3915	<i>Oncorhynchus mykiss</i>	-33.8160	150.9000	<i>Oncorhynchus mykiss</i>	44.1769	0.5608
<i>Oncorhynchus mykiss</i>	34.4174	-79.7064	<i>Oncorhynchus mykiss</i>	-33.0000	150.0000	<i>Oncorhynchus mykiss</i>	43.6640	2.9380
<i>Oncorhynchus mykiss</i>	41.3877	-79.1908	<i>Oncorhynchus mykiss</i>	-35.6160	148.4000	<i>Oncorhynchus mykiss</i>	47.4036	6.1168
<i>Oncorhynchus mykiss</i>	41.2831	-91.3475	<i>Oncorhynchus mykiss</i>	-36.0830	148.6660	<i>Oncorhynchus mykiss</i>	42.8019	0.3591
<i>Oncorhynchus mykiss</i>	43.9863	-89.9626	<i>Oncorhynchus mykiss</i>	-35.0000	148.5660	<i>Oncorhynchus mykiss</i>	48.0749	3.3357
<i>Oncorhynchus mykiss</i>	45.4522	-91.2603	<i>Oncorhynchus mykiss</i>	-33.5502	150.1217	<i>Oncorhynchus mykiss</i>	45.1012	2.1736
<i>Oncorhynchus mykiss</i>	44.4245	-100.3807	<i>Oncorhynchus mykiss</i>	-28.3330	152.2660	<i>Oncorhynchus mykiss</i>	49.1153	-0.0826
<i>Oncorhynchus mykiss</i>	40.0359	-81.0105	<i>Oncorhynchus mykiss</i>	-30.8728	151.1586	<i>Oncorhynchus mykiss</i>	47.7894	1.0633
<i>Oncorhynchus mykiss</i>	44.3639	-102.9443	<i>Oncorhynchus mykiss</i>	-36.7295	148.4347	<i>Oncorhynchus mykiss</i>	46.3533	1.3743
<i>Oncorhynchus mykiss</i>	36.5714	-104.5794	<i>Oncorhynchus mykiss</i>	-35.1160	147.3660	<i>Oncorhynchus mykiss</i>	48.8709	4.8406
<i>Oncorhynchus mykiss</i>	51.0680	-121.3338	<i>Oncorhynchus mykiss</i>	46.2747	2.8052	<i>Oncorhynchus mykiss</i>	46.1733	4.6204
<i>Oncorhynchus mykiss</i>	56.7970	9.0805	<i>Oncorhynchus mykiss</i>	24.9400	121.9000	<i>Oncorhynchus mykiss</i>	47.0805	-1.6816
<i>Oncorhynchus mykiss</i>	54.9029	10.3243	<i>Oncorhynchus mykiss</i>	53.6997	9.1329	<i>Oncorhynchus mykiss</i>	42.4927	2.3319
<i>Oncorhynchus mykiss</i>	55.8872	10.6774	<i>Oncorhynchus mykiss</i>	-32.6252	26.9325	<i>Oncorhynchus mykiss</i>	44.9212	3.8237
<i>Oncorhynchus mykiss</i>	57.2292	11.0692	<i>Oncorhynchus mykiss</i>	49.0167	-65.0500	<i>Oncorhynchus mykiss</i>	41.3236	13.8831
<i>Oncorhynchus mykiss</i>	54.6965	11.8695	<i>Oncorhynchus mykiss</i>	60.7667	-135.0833	<i>Oncorhynchus mykiss</i>	45.6956	9.7183
<i>Oncorhynchus mykiss</i>	55.8669	12.2020	<i>Oncorhynchus mykiss</i>	51.8074	-116.6325	<i>Oncorhynchus mykiss</i>	44.3136	10.9181
<i>Oncorhynchus mykiss</i>	55.2694	14.7628	<i>Oncorhynchus mykiss</i>	51.1647	-115.5588	<i>Oncorhynchus mykiss</i>	44.5947	9.2228
<i>Oncorhynchus mykiss</i>	44.0415	-77.0600	<i>Oncorhynchus mykiss</i>	52.4089	-117.0650	<i>Oncorhynchus mykiss</i>	42.7819	13.2964
<i>Oncorhynchus mykiss</i>	52.6975	-118.2757	<i>Oncorhynchus mykiss</i>	46.2820	-81.9286	<i>Oncorhynchus mykiss</i>	36.8814	14.9147
<i>Oncorhynchus mykiss</i>	50.6792	-100.0052	<i>Oncorhynchus mykiss</i>	46.6006	-84.1249	<i>Oncorhynchus mykiss</i>	37.9000	14.8494
<i>Oncorhynchus mykiss</i>	44.0000	-79.0667	<i>Oncorhynchus mykiss</i>	-39.8333	-72.3000	<i>Oncorhynchus mykiss</i>	38.4772	16.4839
<i>Oncorhynchus mykiss</i>	53.8304	-101.2555	<i>Oncorhynchus mykiss</i>	45.3015	-80.0373	<i>Oncorhynchus mykiss</i>	42.6642	11.6897
<i>Oncorhynchus mykiss</i>	49.4009	-119.5786	<i>Oncorhynchus mykiss</i>	48.3068	-86.1589	<i>Oncorhynchus mykiss</i>	45.3806	11.1122
<i>Oncorhynchus mykiss</i>	52.0500	-100.7500	<i>Oncorhynchus mykiss</i>	46.1433	-79.1467	<i>Oncorhynchus mykiss</i>	45.7625	12.4758
<i>Oncorhynchus mykiss</i>	50.0000	-120.0000	<i>Oncorhynchus mykiss</i>	60.4642	-150.6013	<i>Oncorhynchus mykiss</i>	43.8269	12.3900
<i>Oncorhynchus mykiss</i>	48.8000	-87.2500	<i>Oncorhynchus mykiss</i>	-33.5792	-69.3264	<i>Oncorhynchus mykiss</i>	39.6735	9.4030
<i>Oncorhynchus mykiss</i>	52.3747	-126.7520	<i>Oncorhynchus mykiss</i>	44.3278	-68.3374	<i>Oncorhynchus mykiss</i>	46.6488	10.9896
<i>Oncorhynchus mykiss</i>	45.8833	-83.3500	<i>Oncorhynchus mykiss</i>	45.2366	-69.4083	<i>Oncorhynchus mykiss</i>	45.6595	14.8357
<i>Oncorhynchus mykiss</i>	44.5667	-80.6500	<i>Oncorhynchus mykiss</i>	61.7108	-150.0602	<i>Oncorhynchus mykiss</i>	43.5675	16.7110
<i>Oncorhynchus mykiss</i>	47.5837	-52.8532	<i>Oncorhynchus mykiss</i>	39.5269	-123.7408	<i>Oncorhynchus mykiss</i>	42.7445	20.2135
<i>Oncorhynchus mykiss</i>	45.0833	-78.1500	<i>Oncorhynchus mykiss</i>	35.0947	-120.5622	<i>Oncorhynchus mykiss</i>	46.6496	16.0490
<i>Oncorhynchus mykiss</i>	60.0000	-161.0000	<i>Oncorhynchus mykiss</i>	45.9963	-121.5222	<i>Oncorhynchus mykiss</i>	43.2588	18.8416
<i>Oncorhynchus mykiss</i>	55.3333	-123.3333	<i>Oncorhynchus mykiss</i>	42.3075	-124.4104	<i>Oncorhynchus mykiss</i>	41.6064	21.9221
<i>Oncorhynchus mykiss</i>	-15.9167	-68.8333	<i>Oncorhynchus mykiss</i>	41.2297	-124.0928	<i>Oncorhynchus mykiss</i>	44.7251	17.1577
<i>Oncorhynchus mykiss</i>	43.1167	-80.4000	<i>Oncorhynchus mykiss</i>	33.5372	-117.5536	<i>Oncorhynchus mykiss</i>	44.5505	18.7128
<i>Oncorhynchus mykiss</i>	38.8600	-0.2900	<i>Oncorhynchus mykiss</i>	40.5917	-124.4250	<i>Oncorhynchus mykiss</i>	33.4436	-111.8154
<i>Oncorhynchus mykiss</i>	40.0500	-1.3000	<i>Oncorhynchus mykiss</i>	66.4580	-147.1964	<i>Oncorhynchus mykiss</i>	48.6857	10.1469
<i>Oncorhynchus mykiss</i>	41.4100	1.5000	<i>Oncorhynchus mykiss</i>	45.9839	8.1283	<i>Oncorhynchus mykiss</i>	40.7500	-0.1000
<i>Oncorhynchus mykiss</i>	42.1300	-1.7300	<i>Oncorhynchus mykiss</i>	-25.1000	30.7833	<i>Oncorhynchus mykiss</i>	56.7170	-124.7330
<i>Oncorhynchus mykiss</i>	38.4400	-2.4800	<i>Oncorhynchus mykiss</i>	-26.1903	31.0503	<i>Oncorhynchus mykiss</i>	55.3170	-120.2670

Species	Latitude	Longitude	Species	Latitude	Longitude	Species	Latitude	Longitude
<i>Oncorhynchus mykiss</i>	37.1800	-2.8300	<i>Oncorhynchus mykiss</i>	-18.2500	32.8000	<i>Oncorhynchus mykiss</i>	53.9170	-118.6630
<i>Oncorhynchus mykiss</i>	42.5000	-3.0600	<i>Oncorhynchus mykiss</i>	-33.8000	25.0167	<i>Oncorhynchus mykiss</i>	51.5830	-56.0000
<i>Oncorhynchus mykiss</i>	37.6300	-4.1900	<i>Oncorhynchus mykiss</i>	56.9967	12.7247	<i>Oncorhynchus mykiss</i>	50.2500	-57.5830
<i>Oncorhynchus mykiss</i>	41.3200	-4.6100	<i>Oncorhynchus mykiss</i>	57.6448	15.9280	<i>Oncorhynchus mykiss</i>	50.2830	-65.9670
<i>Oncorhynchus mykiss</i>	43.0100	-5.6400	<i>Oncorhynchus mykiss</i>	58.3674	12.3736	<i>Oncorhynchus mykiss</i>	44.8930	-65.2810
<i>Oncorhynchus mykiss</i>	43.4700	-7.0800	<i>Oncorhynchus mykiss</i>	60.1453	14.5832	<i>Oncorhynchus mykiss</i>	65.3330	-113.6670
<i>Oncorhynchus mykiss</i>	43.1300	-8.9400	<i>Oncorhynchus mykiss</i>	57.7400	18.4072	<i>Oncorhynchus mykiss</i>	39.1787	-96.5541
<i>Oncorhynchus mykiss</i>	39.5900	-5.5000	<i>Oncorhynchus mykiss</i>	58.3030	14.2866	<i>Oncorhynchus mykiss</i>	57.0311	-132.7159
<i>Oncorhynchus mykiss</i>	36.8900	-5.4100	<i>Oncorhynchus mykiss</i>	60.5650	17.4408	<i>Oncorhynchus mykiss</i>	62.0950	-146.2765
<i>Oncorhynchus mykiss</i>	40.9700	-2.7000	<i>Oncorhynchus mykiss</i>	61.2620	15.8651	<i>Oncorhynchus mykiss</i>	25.3570	-100.3080
<i>Oncorhynchus mykiss</i>	39.7900	2.7100	<i>Oncorhynchus mykiss</i>	65.1440	16.3177	<i>Oncorhynchus mykiss</i>	64.0348	15.9961
<i>Oncorhynchus mykiss</i>	51.6277	-124.1422	<i>Oncorhynchus mykiss</i>	29.9227	-90.3193	<i>Oncorhynchus mykiss</i>	58.9690	16.2797
<i>Oncorhynchus mykiss</i>	45.1483	-118.4456	<i>Oncorhynchus mykiss</i>	31.6167	-115.6233	<i>Oncorhynchus mykiss</i>	-42.2500	145.2500
<i>Oncorhynchus mykiss</i>	44.8080	-121.1034	<i>Oncorhynchus mykiss</i>	29.0000	-105.0000	<i>Oncorhynchus mykiss</i>	-25.8870	29.6970
<i>Oncorhynchus mykiss</i>	44.1387	-122.3694	<i>Oncorhynchus mykiss</i>	32.8333	-115.0000	<i>Oncorhynchus mykiss</i>	39.1600	139.9000
<i>Oncorhynchus mykiss</i>	42.8369	-118.8892	<i>Oncorhynchus mykiss</i>	37.9167	-120.9667	<i>Oncorhynchus mykiss</i>	35.0125	134.9560
<i>Oncorhynchus mykiss</i>	42.4198	-123.2042	<i>Oncorhynchus mykiss</i>	19.8161	-101.7906	<i>Oncorhynchus mykiss</i>	35.5625	134.6940
<i>Oncorhynchus mykiss</i>	43.0468	-121.1729	<i>Oncorhynchus mykiss</i>	19.8169	-97.3603	<i>Oncorhynchus mykiss</i>	38.1231	140.5800
<i>Oncorhynchus mykiss</i>	42.2784	-120.4967	<i>Oncorhynchus mykiss</i>	21.0167	-101.2569	<i>Oncorhynchus mykiss</i>	31.9847	-104.7984
<i>Oncorhynchus mykiss</i>	46.0299	-123.7444	<i>Oncorhynchus mykiss</i>	20.2033	-98.5756	<i>Oncorhynchus mykiss</i>	55.7000	-124.8330
<i>Oncorhynchus mykiss</i>	58.3000	-129.5000	<i>Oncorhynchus mykiss</i>	46.1669	-112.2070			