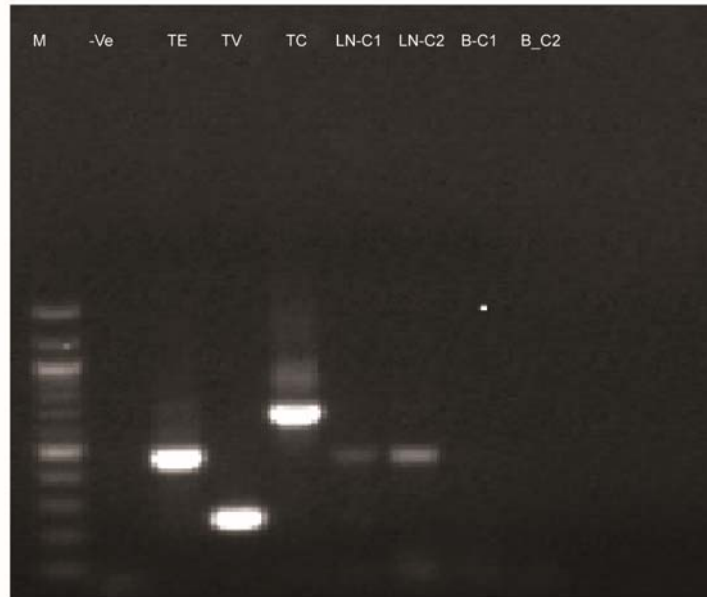


A



B



Supplementary file3. Figure S3. (A) PCR products were resolved 1% ethidium-bromide stained agarose gel (8V for 1.5 hrs) to check for trypanosomes in blood and lymph node aspirate. The DNA isolated from blood and lymph node aspirate was amplified targeting trypanosomal ITS1 gene. Lane: M 10- bp marker, -Ve (reaction buffer), TE (*T. evansi* KETRI 2479) TV (*T. vivax* IL 2136), TC (*T. congolense* savannah (IL3000)), and LN_C1, LN_C2, DNA sample from two camel lymph node aspirate, B_C1 and B_C2 DNA from corresponding blood samples from the same camel. The result shows both samples of the lymph node aspirate were positive, while blood samples were negative from the same camel. (B) Five camels blood and lymph node aspirate were analysed, only camel five lymph node aspirate was positive for *T. vivax* but blood sample from the same camel was negative.