

Supplementary Material

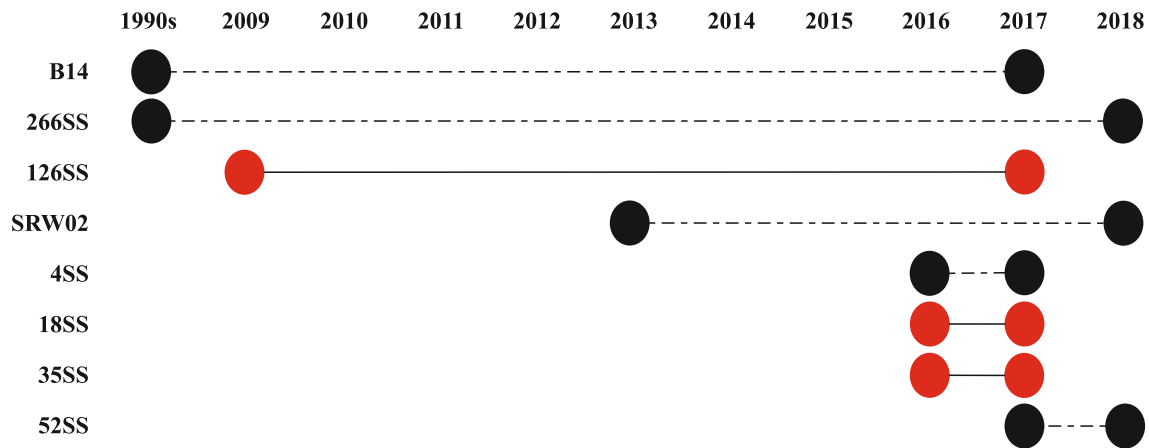


Fig. S1 Captures and re-captures of *Eubalaena australis* samples during several seasons in South Africa. The left column are sample names, the black dots represent the year of capture/recapture, the dashed connection lines with black circles are males, and full connection lines with red circles represent females.

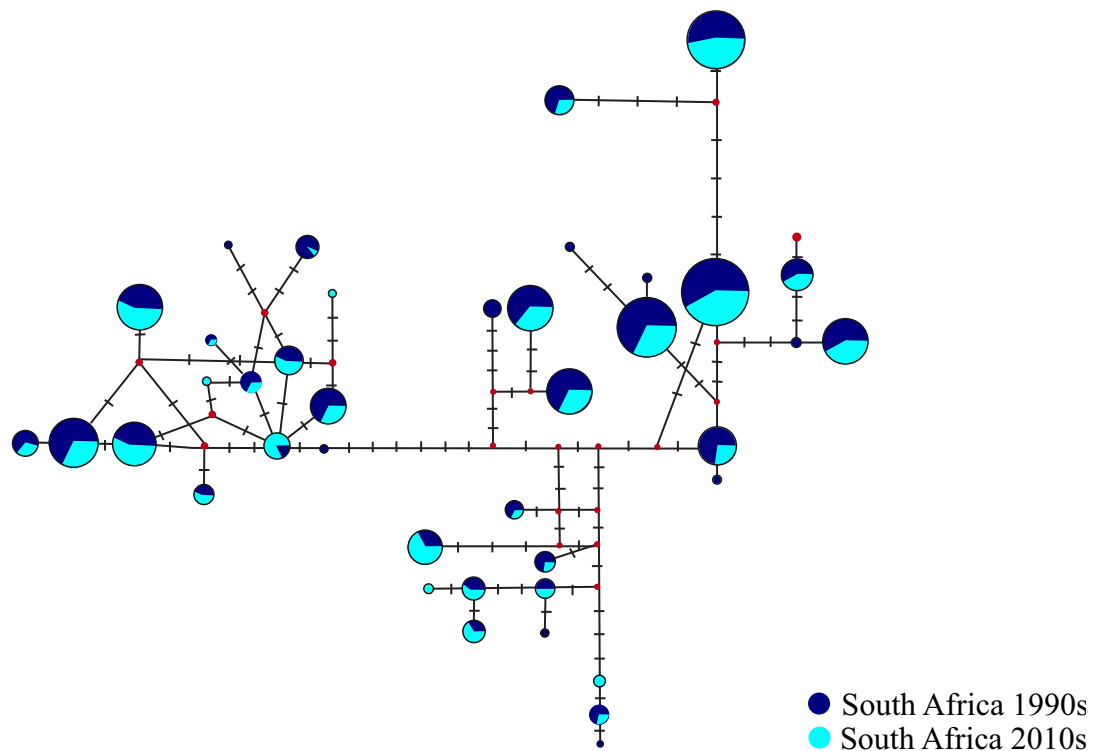
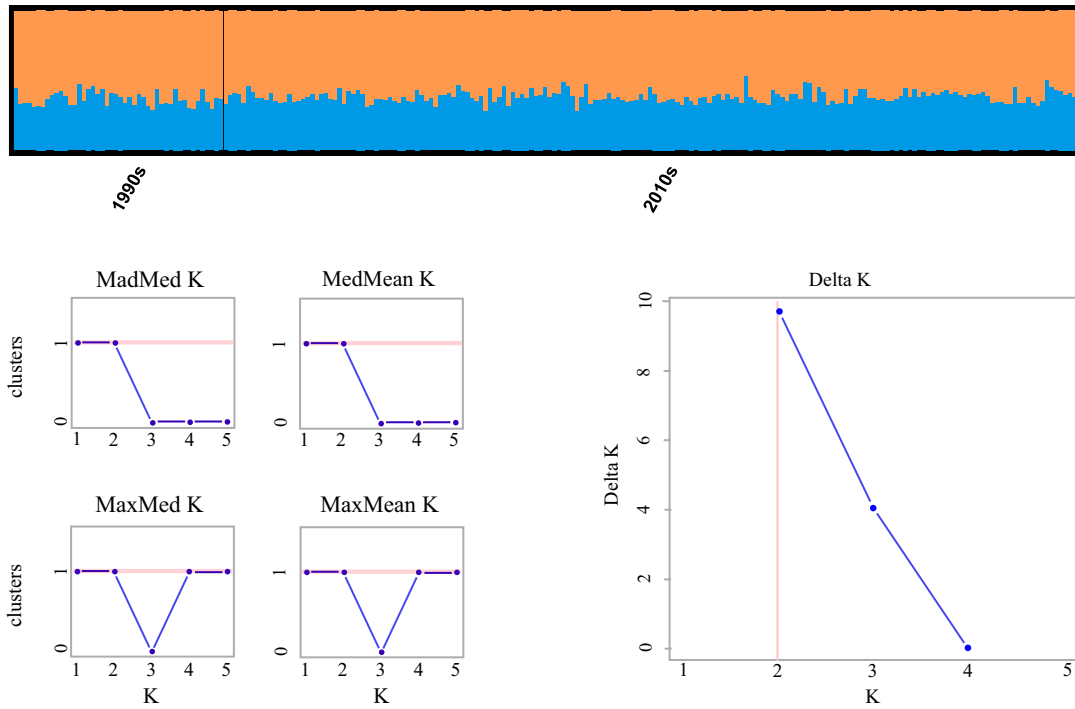


Fig. S2 Median joining network of 595 sequences of *Eubalaena australis* mtDNA control region haplotypes comparing 1990s and 2010s samples from South Africa. Colour codes represent 1990s or 2010s eras. Unsampled haplotypes are shown by red squares. Number of transverse lines denote mutations between haplotypes and each circle is proportional to haplotype frequency.

(a)

$K = 2$



(b)

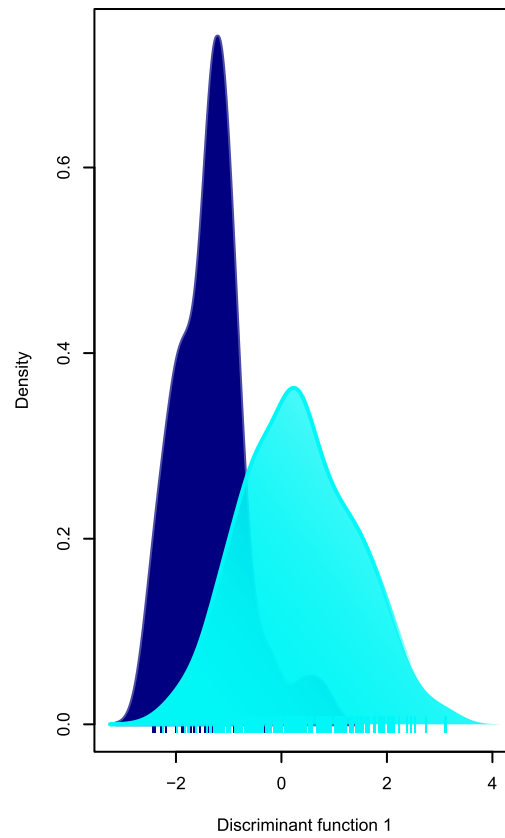
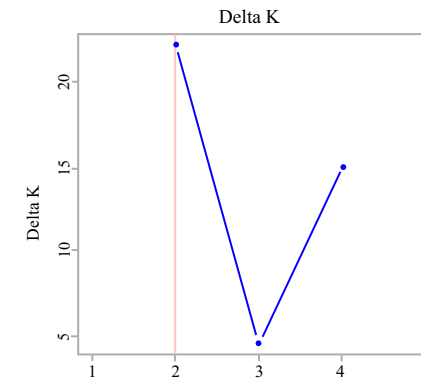


Fig. S3 Comparison between 1990s and 2010s population samples of *Eubalaena australis* from South Africa. (a) Structure Bayesian clustering of 233 nuclear microsatellite genotypes with the prior populations defined; (b) DAPC of 233 genotypes with prior populations defined.

(a)

K = 2



(b)

K = 2

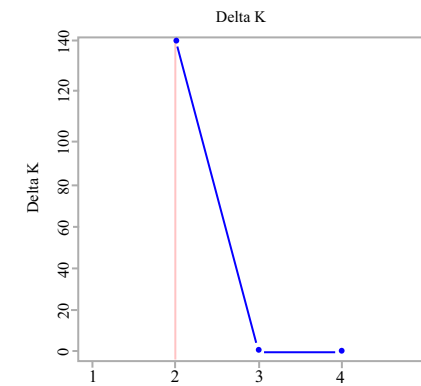
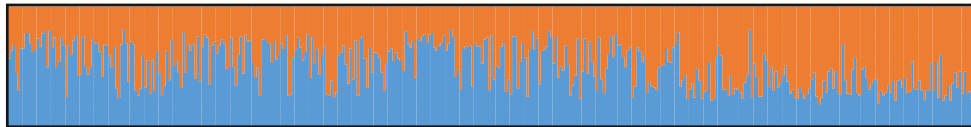


Fig. S4 Clustering of *Eubalaena australis* nuclear microsatellite genotypes based on 14 loci. (a) Bayesian clustering in Structure for recent African population (189 individuals with the locprior function off). (b) Bayesian clustering in Structure for global dataset (410 individuals) with locprior function off. Each genotype is denoted as a vertical bar divided into K colour segments. Proportions of colour segments are equivalent to Structure q values.

- South Africa
- Namibia
- Argentina
- Australia
- New Zealand

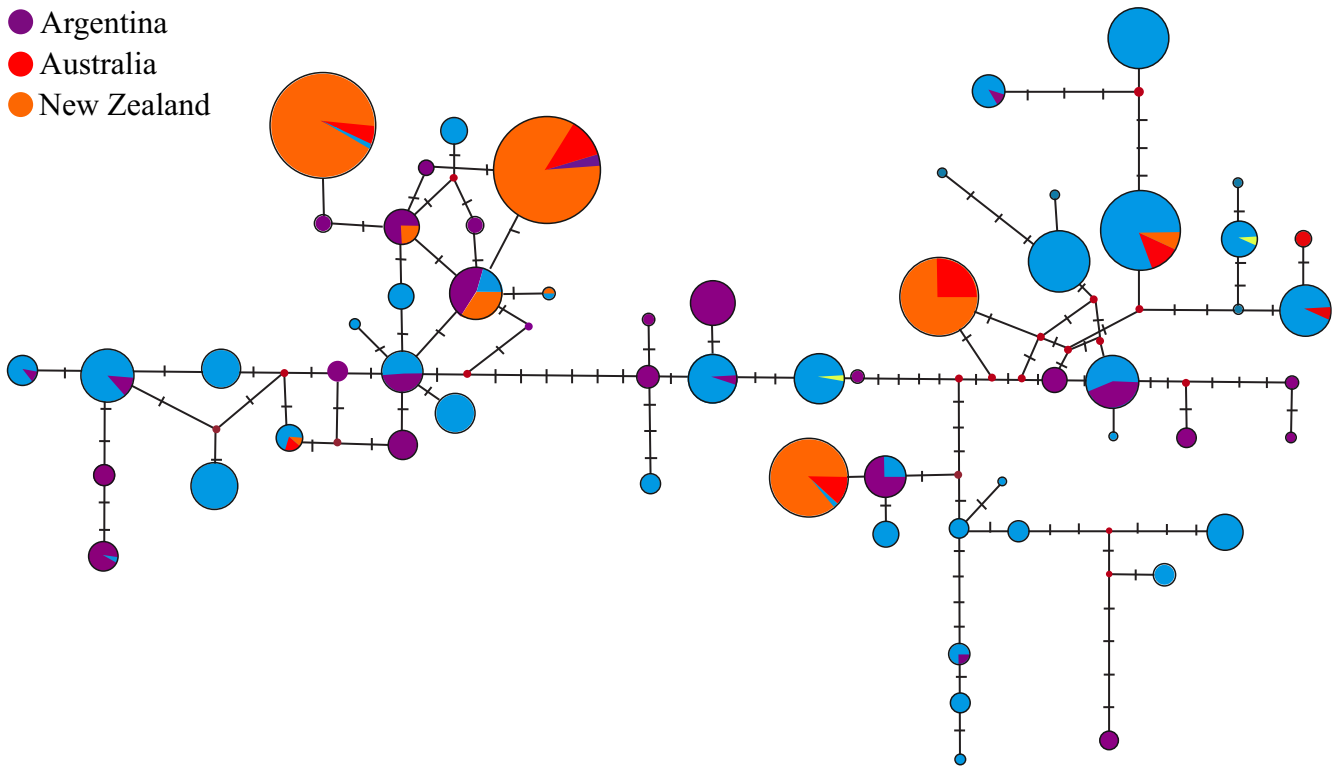


Fig. S5 Median joining network of *Eubalaena australis* mtDNA (5' end of control region) haplotypes for global population based on 1602 sequences. Colour codes represent source populations. Unsampld haplotypes are shown by red squares. Number of transverse lines denote mutations between haplotypes and each circle is proportional to haplotype frequency.

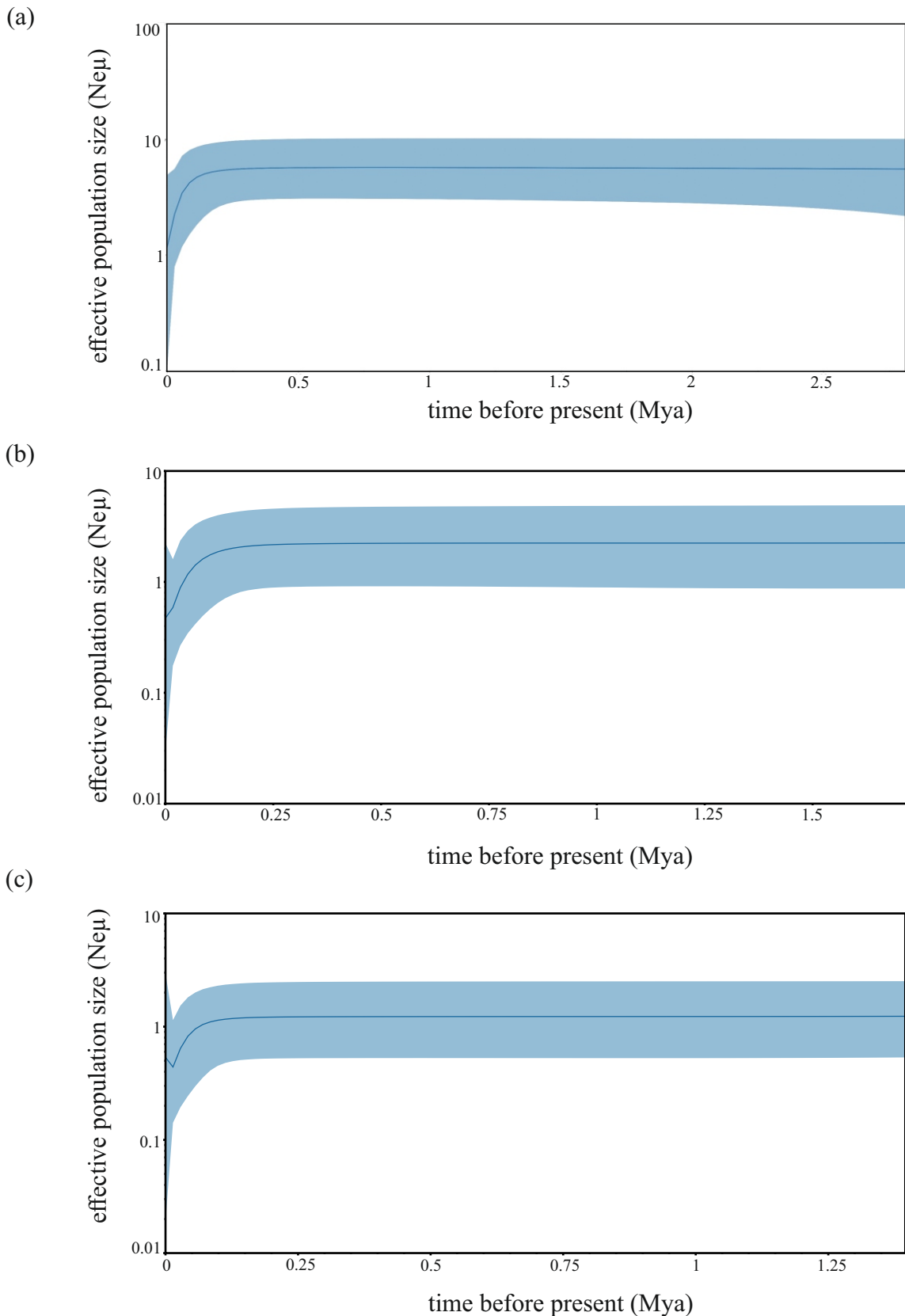


Fig. S6 Bayesian Skyline Plots of mtDNA (left hypervariable domain of control region) for *Eubalaena australis* for (a) South American population based on 208 sequences. GTR + I + G model of sequence evolution was used; ESS = 211.1 (b) Australian population based on 105 sequences. HKY + I model of sequence evolution was used; ESS = 3438.2 and (c) New Zealand population based on 692 sequences. HKY + I + G model of sequence evolution was used; ESS = 224.5. All graphs display changes in effective population size ($N_e\mu$) over time (Mya). The dark blue line depicts the median estimate, and the margins of the blue area represent the highest 95% posterior density intervals.

Table S1 Sample information: species determination, sample code, date of collection, date of potential recapture, assignment to decade, locality and country of origin, assignment to population, sample type, mitochondrial haplotype, GenBank Accession Number, availability of microsatellite genotype, sex determination (SRY), sampling logistics (MRI - Mammal Research Institute, University of Pretoria; DICT - Dyer Island Conservation Trust; DIC - Dyer Island Cruises) and reference

nr.	species	sample code	date of capture	date of recapture	pop - chrono	locality, country	pop - geo	sample type	haplotype	GenBank Acc. No.	microsatellites	sex	lgt	reference
1	<i>Eubalaena australis</i>	xxx1	26.09.2003		1990s	Stilbaai, South Africa	Africa	biopsy	CarHapL	KY353270	+	F	MRI	present study
2	<i>Eubalaena australis</i>	xxx2	2007-08		-	Paternoster, South Africa	-	biopsy	PatHap17	JN097603	-	-	MRI	present study
3	<i>Eubalaena australis</i>	EA1001	2009		-	St. Helena Bay, South Africa	-	biopsy	CarHapEE	KY353289	-	F	MRI	present study
4	<i>Eubalaena australis</i>	EA1002	2009	2009	2010s	St. Helena Bay, South Africa	Africa	biopsy	CarHapU	KY353279	+	F	MRI	present study
5	<i>Eubalaena australis</i>	EA1003	2009		2010s	St. Helena Bay, South Africa	Africa	biopsy	CarHapM	KY353271	+	M	MRI	present study
6	<i>Eubalaena australis</i>	EA1005	2009		2010s	St. Helena Bay, South Africa	Africa	biopsy	BakHapF	JN097599	+	M	MRI	present study
7	<i>Eubalaena australis</i>	EA1006	2009		2010s	St. Helena Bay, South Africa	Africa	biopsy	BakHapF	JN097599	+	F	MRI	present study
8	<i>Eubalaena australis</i>	EA1007	2009		2010s	St. Helena Bay, South Africa	Africa	biopsy	CarHapQ	KY353275	+	F	MRI	present study
9	<i>Eubalaena australis</i>	EA1008	2009		2010s	St. Helena Bay, South Africa	Africa	biopsy	CarHapU	KY353279	+	M	MRI	present study
10	<i>Eubalaena australis</i>	EA1009	2009		2010s	St. Helena Bay, South Africa	Africa	biopsy	CarHapO	KY353273	+	F	MRI	present study
11	<i>Eubalaena australis</i>	EA1010	2009		2010s	St. Helena Bay, South Africa	Africa	biopsy	BakHapF	JN097599	+	M	MRI	present study
12	<i>Eubalaena australis</i>	EA1012	2009	2009	2010s	St. Helena Bay, South Africa	Africa	biopsy	CarHapL	KY353270	+	M	MRI	present study
13	<i>Eubalaena australis</i>	EA1015	2009		2010s	St. Helena Bay, South Africa	Africa	biopsy	PatHap4.2	JN097602	+	M	MRI	present study
14	<i>Eubalaena australis</i>	EA1016	2009		2010s	St. Helena Bay, South Africa	Africa	biopsy	ValHapB	EU290511	+	M	MRI	present study
15	<i>Eubalaena australis</i>	EA1017	2009		2010s	St. Helena Bay, South Africa	Africa	biopsy	ValHapB	EU290511	+	F	MRI	present study
16	<i>Eubalaena australis</i>	EA1018	2009		2010s	St. Helena Bay, South Africa	Africa	biopsy	BakHapE	JN097598	+	M	MRI	present study
17	<i>Eubalaena australis</i>	EaFB1	2012-08		2010s	False Bay, South Africa	Africa	biopsy	BakHapE	JN097598	+	M	MRI	present study
18	<i>Eubalaena australis</i>	EaFB2	2012-08		2010s	False Bay, South Africa	Africa	biopsy	BakHapF	JN097599	+	M	MRI	present study
19	<i>Eubalaena australis</i>	EaFB3	2012-08		2010s	False Bay, South Africa	Africa	biopsy	CarHapU	KY353279	+	M	MRI	present study
20	<i>Eubalaena australis</i>	EaFB4	2012-08	2012-08	2010s	False Bay, South Africa	Africa	biopsy	CarHapU	KY353279	+	M	MRI	present study
21	<i>Eubalaena australis</i>	EaFB6	2012-08		2010s	False Bay, South Africa	Africa	biopsy	valhapDD	GQ389688	+	F	MRI	present study
22	<i>Eubalaena australis</i>	SRW01	2013		2010s	False Bay, South Africa	Africa	biopsy	CarHapP	KY353274	+	M	MRI	present study
23	<i>Eubalaena australis</i>	SRW02	2013	18.08.2018	2010s	False Bay, South Africa	Africa	biopsy	PatHap17	JN097603	+	M	MRI	present study
24	<i>Eubalaena australis</i>	SRW03	2013		2010s	False Bay, South Africa	Africa	biopsy	valhapDD	GQ389688	+	M	MRI	present study
25	<i>Eubalaena australis</i>	SRW04	2013	23.10.2018	-	False Bay, South Africa	-	biopsy	ValHapJ	EU290531	-	M	MRI	present study
26	<i>Eubalaena australis</i>	SRW05	2013		2010s	False Bay, South Africa	Africa	biopsy	CarHapR	KY353276	+	M	MRI	present study
27	<i>Eubalaena australis</i>	SRW06B	2013		2010s	False Bay, South Africa	Africa	biopsy	CarHapM	KY353271	+	M	MRI	present study
28	<i>Eubalaena australis</i>	SRW07	2013		2010s	False Bay, South Africa	Africa	biopsy	BakHapE	JN097598	+	M	MRI	present study
29	<i>Eubalaena australis</i>	SRW08	2013		2010s	False Bay, South Africa	Africa	biopsy	BakHapD	JN097597	+	F	MRI	present study
30	<i>Eubalaena australis</i>	1SS	2016		2010s	Gansbaai, South Africa	Africa	sloughed skin	ValHapN	EU290495	+	F	DIC	present study
31	<i>Eubalaena australis</i>	2SS	2016		2010s	Gansbaai, South Africa	Africa	sloughed skin	BakHapE	JN097598	+	F	DIC	present study
32	<i>Eubalaena australis</i>	3SS	2016		2010s	Gansbaai, South Africa	Africa	sloughed skin	CarHapP	KY353274	+	F	DIC	present study
33	<i>Eubalaena australis</i>	5SS	27.07.2016		2010s	Gansbaai, South Africa	Africa	sloughed skin	PatHap4.1	JN097601	+	F	Ivanhoe Sea Safaris	present study
34	<i>Eubalaena australis</i>	6SS	29.07.2016		2010s	Gansbaai, South Africa	Africa	sloughed skin	CarHapQ	KY353275	+	F	Ivanhoe Sea Safaris	present study
35	<i>Eubalaena australis</i>	7SS	17.08.2016		2010s	Gansbaai, South Africa	Africa	sloughed skin	CarHapO	KY353273	+	M	Ivanhoe Sea Safaris	present study
36	<i>Eubalaena australis</i>	8SS	26.08.2016		2010s	Gansbaai, South Africa	Africa	sloughed skin	ValHapCC	EU290540	+	M	Ivanhoe Sea Safaris	present study
37	<i>Eubalaena australis</i>	9SS	26.08.2016		2010s	Gansbaai, South Africa	Africa	sloughed skin	CarHapU	KY353279	+	F	Ivanhoe Sea Safaris	present study
38	<i>Eubalaena australis</i>	10SS	28.08.2016		2010s	Gansbaai, South Africa	Africa	sloughed skin	BakHapE	JN097598	+	M	Ivanhoe Sea Safaris	present study
39	<i>Eubalaena australis</i>	12SS	28.08.2016		2010s	Gansbaai, South Africa	Africa	sloughed skin	BakHapE	JN097598	+	M	Ivanhoe Sea Safaris	present study
40	<i>Eubalaena australis</i>	14SS	28.08.2016		-	Gansbaai, South Africa	-	sloughed skin	ValHapDD	GQ389688	-	M	DIC	present study
41	<i>Eubalaena australis</i>	15SS	04.09.2016		2010s	Gansbaai, South Africa	Africa	sloughed skin	CarHapM	KY353271	+	M	Ivanhoe Sea Safaris	present study
42	<i>Eubalaena australis</i>	16SS	06.09.2016		2010s	Gansbaai, South Africa	Africa	sloughed skin	PatHap17	JN097603	+	M	Ivanhoe Sea Safaris	present study
43	<i>Eubalaena australis</i>	17SS	07.09.2016		2010s	Gansbaai, South Africa	Africa	sloughed skin	CarHapW	KY353281	+	M	Ivanhoe Sea Safaris	present study
44	<i>Eubalaena australis</i>	19SS	10.09.2016		2010s	Gansbaai, South Africa	Africa	sloughed skin	CarHapU	KY353279	+	F	Ivanhoe Sea Safaris	present study
45	<i>Eubalaena australis</i>	20SS	10.09.2016		-	Gansbaai, South Africa	-	sloughed skin	ValHapB	EU290511	-	F	Ivanhoe Sea Safaris	present study
46	<i>Eubalaena australis</i>	21SS	13.09.2016		2010s	Gansbaai, South Africa	Africa	sloughed skin	CarHapM	KY353271	+	F	Ivanhoe Sea Safaris	present study

47	<i>Eubalaena australis</i>	22SS	13.09.2016	17.09.2016	2010s	Gansbaai, South Africa	Africa	sloughed skin	CarHapM	KY353271	+	F	Ivanhoe Sea Safaris	present study
48	<i>Eubalaena australis</i>	23SS	13.09.2016		2010s	Gansbaai, South Africa	Africa	sloughed skin	CarHapO	KY353273	+	F	DIC	present study
49	<i>Eubalaena australis</i>	24SS	15.09.2016	17.09.2016	-	Gansbaai, South Africa	-	sloughed skin	ValHapZ	EU290523	-	M	Ivanhoe Sea Safaris	present study
50	<i>Eubalaena australis</i>	26SS	17.09.2016		2010s	Gansbaai, South Africa	Africa	sloughed skin	ValHapZ	EU290523	+	M	Ivanhoe Sea Safaris	present study
51	<i>Eubalaena australis</i>	27SS	18.09.2016		2010s	Gansbaai, South Africa	Africa	sloughed skin	CarHapBB	EU290592	+	F	Ivanhoe Sea Safaris	present study
52	<i>Eubalaena australis</i>	28SS	18.09.2016		-	Gansbaai, South Africa	-	sloughed skin	BakHapE	JN097598	-	F	Ivanhoe Sea Safaris	present study
53	<i>Eubalaena australis</i>	29SS	27.09.2016		-	Gansbaai, South Africa	-	sloughed skin	CarHapBB	EU290592	-	F	Ivanhoe Sea Safaris	present study
54	<i>Eubalaena australis</i>	30SS	27.09.2016		2010s	Gansbaai, South Africa	Africa	sloughed skin	CarHapW	KY353281	+	F	Ivanhoe Sea Safaris	present study
55	<i>Eubalaena australis</i>	31SS	27.09.2016		-	Gansbaai, South Africa	-	sloughed skin	BakHapE	JN097598	-	F	Ivanhoe Sea Safaris	present study
56	<i>Eubalaena australis</i>	32SS	01.10.2016		2010s	Gansbaai, South Africa	Africa	sloughed skin	valhapDD	GQ389688	+	M	Ivanhoe Sea Safaris	present study
57	<i>Eubalaena australis</i>	33SS	03.10.2016		2010s	Gansbaai, South Africa	Africa	sloughed skin	PatHap4.2	JN097602	+	F	Ivanhoe Sea Safaris	present study
58	<i>Eubalaena australis</i>	34SS	10.10.2016		2010s	Gansbaai, South Africa	Africa	sloughed skin	CarHapU	KY353279	+	F	Ivanhoe Sea Safaris	present study
59	<i>Eubalaena australis</i>	36SS	18.10.2016		2010s	Gansbaai, South Africa	Africa	sloughed skin	BakHapE	JN097598	+	F	Ivanhoe Sea Safaris	present study
60	<i>Eubalaena australis</i>	39SS	24.10.2016		2010s	Gansbaai, South Africa	Africa	sloughed skin	CarHapN	KY353272	+	F	Ivanhoe Sea Safaris	present study
61	<i>Eubalaena australis</i>	41SS	24.06.2017		2010s	Gansbaai, South Africa	Africa	sloughed skin	BakHapE	JN097598	+	F	Ivanhoe Sea Safaris	present study
62	<i>Eubalaena australis</i>	42SS	24.06.2017	20.10.2016 / 23.10.2016	2010s	Gansbaai, South Africa	Africa	sloughed skin	PatHap17	JN097603	+	F	Ivanhoe Sea Safaris	present study
63	<i>Eubalaena australis</i>	44SS	04.05.2017	24.06.2017	2010s	Gansbaai, South Africa	Africa	sloughed skin	ValHapAA	EU290521	+	F	Ivanhoe Sea Safaris	present study
64	<i>Eubalaena australis</i>	45SS	25.06.2017		2010s	Gansbaai, South Africa	Africa	sloughed skin	CarHapU	KY353279	+	M	Ivanhoe Sea Safaris	present study
65	<i>Eubalaena australis</i>	46SS	25.06.2017	25.06.2017	2010s	Gansbaai, South Africa	Africa	sloughed skin	-	-	+	F	Ivanhoe Sea Safaris	present study
66	<i>Eubalaena australis</i>	48SS	26.06.2017		-	Gansbaai, South Africa	-	sloughed skin	CarHapR	KY353271	-	M	Ivanhoe Sea Safaris	present study
67	<i>Eubalaena australis</i>	49SS	01.07.2017		-	Gansbaai, South Africa	-	sloughed skin	ValHapAA	EU290521	-	F	Ivanhoe Sea Safaris	present study
68	<i>Eubalaena australis</i>	51SS	22.07.2017		2010s	Gansbaai, South Africa	Africa	sloughed skin	-	-	+	M	Ivanhoe Sea Safaris	present study
69	<i>Eubalaena australis</i>	52SS	23.07.2017		2010s	Gansbaai, South Africa	Africa	sloughed skin	-	-	+	M	Ivanhoe Sea Safaris	present study
70	<i>Eubalaena australis</i>	53SS	23.07.2017		2010s	Gansbaai, South Africa	Africa	sloughed skin	-	-	+	F	Ivanhoe Sea Safaris	present study
71	<i>Eubalaena australis</i>	54SS	24.07.2017		-	Gansbaai, South Africa	-	sloughed skin	CarHapO	KY353273	-	M	Ivanhoe Sea Safaris	present study
72	<i>Eubalaena australis</i>	55SS	24.07.2017		2010s	Gansbaai, South Africa	Africa	sloughed skin	BakHapF	JN097599	+	F	Ivanhoe Sea Safaris	present study
73	<i>Eubalaena australis</i>	57SS	24.07.2017		2010s	Gansbaai, South Africa	Africa	sloughed skin	CarHapO	KY353273	+	M	Ivanhoe Sea Safaris	present study
74	<i>Eubalaena australis</i>	58SS	27.07.2017		2010s	Gansbaai, South Africa	Africa	sloughed skin	ValHapD	EU290480	+	M	Ivanhoe Sea Safaris	present study
75	<i>Eubalaena australis</i>	59SS	27.07.2017		-	Gansbaai, South Africa	-	sloughed skin	PatHap17	JN097603	-	M	Ivanhoe Sea Safaris	present study
76	<i>Eubalaena australis</i>	60SS	31.07.2017		-	Gansbaai, South Africa	-	sloughed skin	CarHapL	KY353270	-	M	Ivanhoe Sea Safaris	present study
77	<i>Eubalaena australis</i>	61SS	31.07.2017	08.08.2017	2010s	Gansbaai, South Africa	Africa	sloughed skin	CarHapR	KY353276	+	M	Ivanhoe Sea Safaris	present study
78	<i>Eubalaena australis</i>	62SS	31.07.2017		-	Gansbaai, South Africa	-	sloughed skin	BakHapF	JN097599	-	M	Ivanhoe Sea Safaris	present study
79	<i>Eubalaena australis</i>	63SS	03.08.2017		2010s	Gansbaai, South Africa	Africa	sloughed skin	ValHapB	EU290511	+	M	Ivanhoe Sea Safaris	present study
80	<i>Eubalaena australis</i>	64SS	04.08.2017		-	Gansbaai, South Africa	-	sloughed skin	CarHapU	KY353279	-	M	Ivanhoe Sea Safaris	present study
81	<i>Eubalaena australis</i>	77SS	27.07.2016	27.07.2016 / 24.06.2017 / 08.08.2017	2010s	Gansbaai, South Africa	Africa	sloughed skin	ValHapN	EU290495	+	M	Ivanhoe Sea Safaris	present study
82	<i>Eubalaena australis</i>	79SS	13.08.2017		2010s	Gansbaai, South Africa	Africa	sloughed skin	-	-	+	M	Ivanhoe Sea Safaris	present study
83	<i>Eubalaena australis</i>	81SS	14.08.2017	14.08.2017	2010s	Gansbaai, South Africa	Africa	sloughed skin	BakHapE	JN097598	+	M	Ivanhoe Sea Safaris	present study
84	<i>Eubalaena australis</i>	82SS	17.08.2017	17.08.2017	2010s	Gansbaai, South Africa	Africa	sloughed skin	ValHapB	EU290511	+	F	Ivanhoe Sea Safaris	present study
85	<i>Eubalaena australis</i>	85SS	18.08.2017		2010s	Gansbaai, South Africa	Africa	sloughed skin	CarHapO	KY353273	+	F	Ivanhoe Sea Safaris	present study
86	<i>Eubalaena australis</i>	87SS	20.08.2017		2010s	Gansbaai, South Africa	Africa	sloughed skin	CarHapP	KY353274	+	F	Ivanhoe Sea Safaris	present study
87	<i>Eubalaena australis</i>	88SS	20.08.2017		2010s	Gansbaai, South Africa	Africa	sloughed skin	ValHapAA	EU290521	+	M	Ivanhoe Sea Safaris	present study
88	<i>Eubalaena australis</i>	89SS	25.08.2017		2010s	Gansbaai, South Africa	Africa	sloughed skin	ValHapZ	EU290523	+	M	DIC	present study
89	<i>Eubalaena australis</i>	90SS	26.08.2017		2010s	Gansbaai, South Africa	Africa	sloughed skin	CarHapEE	KY353289	+	M	Ivanhoe Sea Safaris	present study
90	<i>Eubalaena australis</i>	91SS	26.08.2017		2010s	Gansbaai, South Africa	Africa	sloughed skin	CarHapQ	KY353275	+	F	Ivanhoe Sea Safaris	present study
91	<i>Eubalaena australis</i>	92SS	26.08.2017		2010s	Gansbaai, South Africa	Africa	sloughed skin	CarHapM	KY353271	+	M	Ivanhoe Sea Safaris	present study
92	<i>Eubalaena australis</i>	93SS	27.08.2017		-	Gansbaai, South Africa	-	sloughed skin	ValHapN	EU290495	-	M	Ivanhoe Sea Safaris	present study
93	<i>Eubalaena australis</i>	94SS	27.08.2017		-	Gansbaai, South Africa	-	sloughed skin	CarHapN	KY353272	-	M	Ivanhoe Sea Safaris	present study
94	<i>Eubalaena australis</i>	95SS	27.08.2017		2010s	Gansbaai, South Africa	Africa	sloughed skin	ValHapCC	EU290540	+	M	Ivanhoe Sea Safaris	present study
95	<i>Eubalaena australis</i>	96SS	27.08.2017		-	Gansbaai, South Africa	-	sloughed skin	ValHapN	EU290495	-	M	Ivanhoe Sea Safaris	present study
96	<i>Eubalaena australis</i>	97SS	27.08.2017		-	Gansbaai, South Africa	-	sloughed skin	BakHapE	JN097598	-	F	Ivanhoe Sea Safaris	present study

97	<i>Eubalaena australis</i>	100SS	28.08.2017		2010s	Gansbaai, South Africa	Africa	sloughed skin	PatHap17	JN097603	+	M	Ivanhoe Sea Safaris	present study
98	<i>Eubalaena australis</i>	101SS	30.08.2017		2010s	Gansbaai, South Africa	Africa	sloughed skin	CarHapU	KY353279	+	M	Ivanhoe Sea Safaris	present study
99	<i>Eubalaena australis</i>	102SS	31.08.2017		2010s	Gansbaai, South Africa	Africa	sloughed skin	CarHapQ	KY353275	+	M	DIC	present study
100	<i>Eubalaena australis</i>	103SS	01.09.2017		-	Gansbaai, South Africa	-	sloughed skin	ValHapCC	EU290540	-	M	Ivanhoe Sea Safaris	present study
101	<i>Eubalaena australis</i>	105SS	01.09.2017		-	Gansbaai, South Africa	-	sloughed skin	CarHapU	KY353279	-	M	Ivanhoe Sea Safaris	present study
102	<i>Eubalaena australis</i>	106SS	01.09.2017		-	Gansbaai, South Africa	-	sloughed skin	PatHap17	JN097603	-	M	Ivanhoe Sea Safaris	present study
103	<i>Eubalaena australis</i>	108SS	01.09.2017		2010s	Gansbaai, South Africa	Africa	sloughed skin	PatHap17	JN097603	+	F	Ivanhoe Sea Safaris	present study
104	<i>Eubalaena australis</i>	109SS	01.09.2017		2010s	Gansbaai, South Africa	Africa	sloughed skin	ValHapB	EU290511	+	M	Ivanhoe Sea Safaris	present study
105	<i>Eubalaena australis</i>	110SS	03.09.2017		-	Gansbaai, South Africa	-	sloughed skin	ValHapB	EU290511	-	M	Ivanhoe Sea Safaris	present study
106	<i>Eubalaena australis</i>	111SS	03.09.2017		-	Gansbaai, South Africa	-	sloughed skin	CarHapP	KY353274	-	M	Ivanhoe Sea Safaris	present study
107	<i>Eubalaena australis</i>	113SS	09.09.2017		2010s	Gansbaai, South Africa	Africa	sloughed skin	CarHapO	KY353273	+	M	Ivanhoe Sea Safaris	present study
108	<i>Eubalaena australis</i>	114SS	09.09.2017		2010s	Gansbaai, South Africa	Africa	sloughed skin	CarHapM	KY353271	+	M	Ivanhoe Sea Safaris	present study
109	<i>Eubalaena australis</i>	115SS	09.09.2017		-	Gansbaai, South Africa	-	sloughed skin	BakHapE	JN097598	-	M	Ivanhoe Sea Safaris	present study
110	<i>Eubalaena australis</i>	116SS	09.09.2017		2010s	Gansbaai, South Africa	Africa	sloughed skin	CarHapQ	KY353275	+	M	Ivanhoe Sea Safaris	present study
111	<i>Eubalaena australis</i>	117SS	10.09.2017		-	Gansbaai, South Africa	-	sloughed skin	CarHapBB	EU290592	-	M	Ivanhoe Sea Safaris	present study
112	<i>Eubalaena australis</i>	118SS	10.09.2017		-	Gansbaai, South Africa	-	sloughed skin	CarHapL	KY353270	-	F	Ivanhoe Sea Safaris	present study
113	<i>Eubalaena australis</i>	119SS	10.09.2017		2010s	Gansbaai, South Africa	Africa	sloughed skin	CarHapM	KY353271	+	M	Ivanhoe Sea Safaris	present study
114	<i>Eubalaena australis</i>	120SS	10.09.2017		2010s	Gansbaai, South Africa	Africa	sloughed skin	ValHapN	EU290495	+	M	Ivanhoe Sea Safaris	present study
115	<i>Eubalaena australis</i>	121SS	10.09.2017		-	Gansbaai, South Africa	-	sloughed skin	CarHapN	KY353272	-	F	Ivanhoe Sea Safaris	present study
116	<i>Eubalaena australis</i>	123SS	10.09.2017		-	Gansbaai, South Africa	-	sloughed skin	BakHapE	JN097598	-	M	Ivanhoe Sea Safaris	present study
117	<i>Eubalaena australis</i>	124SS	10.09.2017		2010s	Gansbaai, South Africa	Africa	sloughed skin	CarHapL	KY353270	+	F	Ivanhoe Sea Safaris	present study
118	<i>Eubalaena australis</i>	125SS	14.09.2017		2010s	Gansbaai, South Africa	Africa	sloughed skin	PatHap17	JN097603	+	M	Ivanhoe Sea Safaris	present study
119	<i>Eubalaena australis</i>	126SS	15.09.2017	2009	2010s	Gansbaai, South Africa	Africa	sloughed skin	CarHapX	KY353282	+	F	Ivanhoe Sea Safaris	present study
120	<i>Eubalaena australis</i>	127SS	17.09.2017	17.09.2017 (5x)	2010s	Gansbaai, South Africa	Africa	sloughed skin	PatHap17	JN097603	+	M	Ivanhoe Sea Safaris	present study
121	<i>Eubalaena australis</i>	134SS	17.09.2017	17.09.2017 (2x)	2010s	Gansbaai, South Africa	Africa	sloughed skin	CarHapM	KY353271	+	F	Ivanhoe Sea Safaris	present study
122	<i>Eubalaena australis</i>	136SS	17.09.2017		2010s	Gansbaai, South Africa	Africa	sloughed skin	CarHapO	KY353273	+	M	DIC	present study
123	<i>Eubalaena australis</i>	137SS	09.08.2016	08.09.2016 / 19.09.2017	2010s	Gansbaai, South Africa	Africa	sloughed skin	BakHapE	JN097598	+	F	Ivanhoe Sea Safaris	present study
124	<i>Eubalaena australis</i>	139SS	19.09.2017	19.09.2017	2010s	Gansbaai, South Africa	Africa	sloughed skin	CarHapM	KY353271	+	M	Ivanhoe Sea Safaris	present study
125	<i>Eubalaena australis</i>	142SS	21.09.2017	21.09.2017	2010s	Gansbaai, South Africa	Africa	sloughed skin	BakHapE	JN097598	+	F	Ivanhoe Sea Safaris	present study
126	<i>Eubalaena australis</i>	145SS	28.09.2017	28.09.2017	2010s	Gansbaai, South Africa	Africa	sloughed skin	CarHapU	KY353279	+	F	Ivanhoe Sea Safaris	present study
127	<i>Eubalaena australis</i>	149SS	02.10.2017		2010s	Gansbaai, South Africa	Africa	sloughed skin	CarHapEE	KY353289	+	M	Ivanhoe Sea Safaris	present study
128	<i>Eubalaena australis</i>	150SS	08.10.2017	08.10.2017 (2x)	2010s	Gansbaai, South Africa	Africa	sloughed skin	CarHapO	KY353273	+	M	Ivanhoe Sea Safaris	present study
129	<i>Eubalaena australis</i>	152SS	08.10.2017		2010s	Gansbaai, South Africa	Africa	sloughed skin	ValHapAA	EU290521	+	F	Ivanhoe Sea Safaris	present study
130	<i>Eubalaena australis</i>	154SS	10.10.2017		2010s	Gansbaai, South Africa	Africa	sloughed skin	CarHapL	KY353270	+	M	Ivanhoe Sea Safaris	present study
131	<i>Eubalaena australis</i>	155SS	10.10.2017		2010s	Gansbaai, South Africa	Africa	sloughed skin	ValHapN	EU290495	+	M	Ivanhoe Sea Safaris	present study
132	<i>Eubalaena australis</i>	157SS	10.10.2017		2010s	Gansbaai, South Africa	Africa	sloughed skin	CarHapT	KY353278	+	M	Ivanhoe Sea Safaris	present study
133	<i>Eubalaena australis</i>	158SS	10.10.2017	10.10.2017 (2x)	2010s	Gansbaai, South Africa	Africa	sloughed skin	CarHapEE	KY353289	+	M	Ivanhoe Sea Safaris	present study
134	<i>Eubalaena australis</i>	160SS	11.10.2017	2017 - 11	2010s	Gansbaai, South Africa	Africa	sloughed skin	CarHapS	KY353277	+	F	Ivanhoe Sea Safaris	present study
135	<i>Eubalaena australis</i>	161SS	12.10.2017		2010s	Gansbaai, South Africa	Africa	sloughed skin	CarHapT	KY353278	+	M	Ivanhoe Sea Safaris	present study
136	<i>Eubalaena australis</i>	162SS	22.10.2017		2010s	Gansbaai, South Africa	Africa	sloughed skin	CarHapM	KY353271	+	M	Ivanhoe Sea Safaris	present study
137	<i>Eubalaena australis</i>	163SS	28.10.2017		-	Gansbaai, South Africa	-	sloughed skin	PatHap17	JN097603	-	F	Ivanhoe Sea Safaris	present study
138	<i>Eubalaena australis</i>	164SS	29.10.2017		2010s	Gansbaai, South Africa	Africa	sloughed skin	CarHapR	KY353276	+	M	Ivanhoe Sea Safaris	present study
139	<i>Eubalaena australis</i>	165SS	30.10.2017		2010s	Gansbaai, South Africa	Africa	sloughed skin	ValHapJ	EU290531	+	M	Ivanhoe Sea Safaris	present study
140	<i>Eubalaena australis</i>	166SS	2017-30-10		2010s	Gansbaai, South Africa	Africa	sloughed skin	CarHapO	KY353273	+	M	Ivanhoe Sea Safaris	present study
141	<i>Eubalaena australis</i>	167SS	31.10.2017		2010s	Gansbaai, South Africa	Africa	sloughed skin	CarHapM	KY353271	+	F	Ivanhoe Sea Safaris	present study
142	<i>Eubalaena australis</i>	169SS	01.11.2017	2017 - 11 (2x)	2010s	Gansbaai, South Africa	Africa	sloughed skin	ValHapB	EU290511	+	F	Ivanhoe Sea Safaris	present study
143	<i>Eubalaena australis</i>	170SS	2017-11		2010s	Gansbaai, South Africa	Africa	sloughed skin	ValHapZ	EU290523	+	M	Ivanhoe Sea Safaris	present study
144	<i>Eubalaena australis</i>	174SS	2017-11		2010s	Gansbaai, South Africa	Africa	sloughed skin	ValHapJ	EU290531	+	F	Ivanhoe Sea Safaris	present study
145	<i>Eubalaena australis</i>	176SS	2017-11		2010s	Gansbaai, South Africa	Africa	sloughed skin	CarHapO	KY353273	+	M	Ivanhoe Sea Safaris	present study
146	<i>Eubalaena australis</i>	177SS	2017-11		2010s	Gansbaai, South Africa	Africa	sloughed skin	CarHapP	KY353274	+	F	Ivanhoe Sea Safaris	present study

147	<i>Eubalaena australis</i>	178SS	2017-11		2010s	Gansbaai, South Africa	Africa	sloughed skin	CarHapM	KY353271	+	F	Ivanhoe Sea Safaris	present study
148	<i>Eubalaena australis</i>	179SS	2017-11		2010s	Gansbaai, South Africa	Africa	sloughed skin	ValHapZ	EU290523	+	F	Ivanhoe Sea Safaris	present study
149	<i>Eubalaena australis</i>	B1	2017-8		2010s	Gansbaai, South Africa	Africa	biopsy	CarHapQ	KY353275	+	M	DICT	present study
150	<i>Eubalaena australis</i>	B3	2017-8		2010s	Gansbaai, South Africa	Africa	biopsy	CarHapJ	JN097600	+	M	DICT	present study
151	<i>Eubalaena australis</i>	B4	08.08.2017		2010s	Gansbaai, South Africa	Africa	biopsy	ValHapN	EU290495	+	M	DICT	present study
152	<i>Eubalaena australis</i>	B5	08.08.2017		2010s	Gansbaai, South Africa	Africa	biopsy	CarHapL	KY353270	+	M	DICT	present study
153	<i>Eubalaena australis</i>	B6	14.08.2017		2010s	Gansbaai, South Africa	Africa	biopsy	CarHapO	KY353273	+	F	DICT	present study
154	<i>Eubalaena australis</i>	B7	14.08.2017		2010s	Gansbaai, South Africa	Africa	biopsy	BakHapF	JN097599	+	F	DICT	present study
155	<i>Eubalaena australis</i>	B8	28.08.2017		2010s	Gansbaai, South Africa	Africa	biopsy	CarHapO	KY353273	+	F	DICT	present study
156	<i>Eubalaena australis</i>	B9	28.08.2017		2010s	Gansbaai, South Africa	Africa	biopsy	CarHapU	KY353279	+	M	DICT	present study
157	<i>Eubalaena australis</i>	B10	28.08.2017		2010s	Gansbaai, South Africa	Africa	biopsy	CarHapR	KY353276	+	F	DICT	present study
158	<i>Eubalaena australis</i>	B11	30.08.2017		2010s	Gansbaai, South Africa	Africa	biopsy	ValHapP	EU290475	+	F	DICT	present study
159	<i>Eubalaena australis</i>	B12	04.09.2017		2010s	Gansbaai, South Africa	Africa	biopsy	CarHapP	KY353274	+	M	DICT	present study
160	<i>Eubalaena australis</i>	B13	04.09.2017		2010s	Gansbaai, South Africa	Africa	biopsy	ValHapZ	EU290523	+	M	DICT	present study
161	<i>Eubalaena australis</i>	B14	18.09.2017	1990s	2010s	Gansbaai, South Africa	Africa	biopsy	CarHapO	KY353273	+	M	DICT	present study
162	<i>Eubalaena australis</i>	B15	18.09.2017		2010s	Gansbaai, South Africa	Africa	biopsy	ValHapN	EU290495	+	F	DICT	present study
163	<i>Eubalaena australis</i>	B16	18.09.2017		2010s	Gansbaai, South Africa	Africa	biopsy	CarHapR	KY353276	+	M	DICT	present study
164	<i>Eubalaena australis</i>	B18	18.09.2017		2010s	Gansbaai, South Africa	Africa	biopsy	CarHapEE	KY353289	+	F	DICT	present study
165	<i>Eubalaena australis</i>	B19	18.09.2017	18.09.2017	2010s	Gansbaai, South Africa	Africa	biopsy	BakHapA	JN097593	+	F	DICT	present study
166	<i>Eubalaena australis</i>	B21	18.09.2017	18.09.2017	2010s	Gansbaai, South Africa	Africa	biopsy	PatHap17	JN097603	+	M	DICT	present study
167	<i>Eubalaena australis</i>	B22	18.09.2017		2010s	Gansbaai, South Africa	Africa	biopsy	CarHapL	KY353270	+	M	DICT	present study
168	<i>Eubalaena australis</i>	B24	18.09.2017		2010s	Gansbaai, South Africa	Africa	biopsy	ValHapB	EU290511	+	M	DICT	present study
169	<i>Eubalaena australis</i>	B25	29.09.2017		2010s	Gansbaai, South Africa	Africa	biopsy	BakHapE	JN097598	+	M	DICT	present study
170	<i>Eubalaena australis</i>	181SS	10.07.2018		2010s	Gansbaai, South Africa	Africa	sloughed skin	CarHapW	KY353281	+	F	Ivanhoe Sea Safaris	present study
171	<i>Eubalaena australis</i>	182SS	21.07.2018		-	Gansbaai, South Africa	-	sloughed skin	ValHapDD	GQ389688	-	F	Ivanhoe Sea Safaris	present study
172	<i>Eubalaena australis</i>	183SS	22.07.2018		2010s	Gansbaai, South Africa	Africa	sloughed skin	-	-	+	F	Ivanhoe Sea Safaris	present study
173	<i>Eubalaena australis</i>	184SS	22.07.2018		2010s	Gansbaai, South Africa	Africa	sloughed skin	PatHap17	JN097603.1	+	M	Ivanhoe Sea Safaris	present study
174	<i>Eubalaena australis</i>	185SS	23.07.2018		2010s	Gansbaai, South Africa	Africa	sloughed skin	CarHapS	KY353277	+	F	Ivanhoe Sea Safaris	present study
175	<i>Eubalaena australis</i>	187SS	26.07.2018		-	Gansbaai, South Africa	-	sloughed skin	ValHapCC	EU290540	-	M	Ivanhoe Sea Safaris	present study
176	<i>Eubalaena australis</i>	188SS	26.07.2018		2010s	Gansbaai, South Africa	Africa	sloughed skin	-	-	+	M	Ivanhoe Sea Safaris	present study
177	<i>Eubalaena australis</i>	189SS	26.07.2018		-	Gansbaai, South Africa	-	sloughed skin	BakHapE	JN097598	-	F	Ivanhoe Sea Safaris	present study
178	<i>Eubalaena australis</i>	190SS	26.07.2018		2010s	Gansbaai, South Africa	Africa	sloughed skin	PatHap17	JN097603	+	F	Ivanhoe Sea Safaris	present study
179	<i>Eubalaena australis</i>	191SS	28.07.2018		-	Gansbaai, South Africa	-	sloughed skin	CarHapL	KY353270	-	M	Ivanhoe Sea Safaris	present study
180	<i>Eubalaena australis</i>	192SS	30.07.2018		-	Gansbaai, South Africa	-	sloughed skin	BakHapF	JN097599	-	F	Ivanhoe Sea Safaris	present study
181	<i>Eubalaena australis</i>	193SS	30.07.2018		2010s	Gansbaai, South Africa	Africa	sloughed skin	CarHapR	KY353271	+	M	Ivanhoe Sea Safaris	present study
182	<i>Eubalaena australis</i>	194SS	30.07.2018		-	Gansbaai, South Africa	-	sloughed skin	CarHapM	KY353271	-	M	Ivanhoe Sea Safaris	present study
183	<i>Eubalaena australis</i>	195SS	08.08.2018		2010s	Gansbaai, South Africa	Africa	sloughed skin	ValHapN	EU290495	+	M	Ivanhoe Sea Safaris	present study
184	<i>Eubalaena australis</i>	196SS	09.08.2018	09.08.2018	2010s	Gansbaai, South Africa	Africa	sloughed skin	BakHapE	JN097598	+	M	Ivanhoe Sea Safaris	present study
185	<i>Eubalaena australis</i>	198SS	10.08.2018		2010s	Gansbaai, South Africa	Africa	sloughed skin	CarHapL	KY353270	+	M	Ivanhoe Sea Safaris	present study
186	<i>Eubalaena australis</i>	199SS	10.08.2018		-	Gansbaai, South Africa	-	sloughed skin	CarHapP	KY353274	-	F	Ivanhoe Sea Safaris	present study
187	<i>Eubalaena australis</i>	200SS	13.08.2018		2010s	Gansbaai, South Africa	Africa	sloughed skin	BakHapF	JN097599	+	F	Ivanhoe Sea Safaris	present study
188	<i>Eubalaena australis</i>	201SS	13.08.2018		2010s	Gansbaai, South Africa	Africa	sloughed skin	BakHapF	JN097599	+	F	Ivanhoe Sea Safaris	present study
189	<i>Eubalaena australis</i>	202SS	15.08.2018		2010s	Gansbaai, South Africa	Africa	sloughed skin	CarHapJ	JN097600	+	F	Ivanhoe Sea Safaris	present study
190	<i>Eubalaena australis</i>	204SS	18.08.2018		-	Gansbaai, South Africa	-	sloughed skin	CarHapO	KY353273	-	M	Ivanhoe Sea Safaris	present study
191	<i>Eubalaena australis</i>	205SS	18.08.2018		2010s	Gansbaai, South Africa	Africa	sloughed skin	CarHapP	KY353274	+	F	Ivanhoe Sea Safaris	present study
192	<i>Eubalaena australis</i>	206SS	18.08.2018		-	Gansbaai, South Africa	-	sloughed skin	ValHapJ	EU290531	-	F	Ivanhoe Sea Safaris	present study
193	<i>Eubalaena australis</i>	208SS	20.08.2018		2010s	Gansbaai, South Africa	Africa	sloughed skin	PatHap4.2	JN097602	+	M	Ivanhoe Sea Safaris	present study
194	<i>Eubalaena australis</i>	210SS	21.08.2018		2010s	Gansbaai, South Africa	Africa	sloughed skin	ValHapN	EU290495	+	F	Ivanhoe Sea Safaris	present study
195	<i>Eubalaena australis</i>	211SS	21.08.2018		-	Gansbaai, South Africa	-	sloughed skin	ValHapZ	EU290523	-	M	Ivanhoe Sea Safaris	present study
196	<i>Eubalaena australis</i>	212SS	20.08.2018	20.08.2018	2010s	Gansbaai, South Africa	Africa	sloughed skin	BakHapF	JN097599	+	M	Ivanhoe Sea Safaris	present study

197	<i>Eubalaena australis</i>	214SS	21.08.2018	-	Gansbaai, South Africa	-	sloughed skin	BakHapE	JN097598	-	F	Ivanhoe Sea Safaris	present study
198	<i>Eubalaena australis</i>	215SS	21.08.2018	2010s	Gansbaai, South Africa	Africa	sloughed skin	BakHapE	JN097598	+	F	Ivanhoe Sea Safaris	present study
199	<i>Eubalaena australis</i>	216SS	24.08.2018	2010s	Gansbaai, South Africa	Africa	sloughed skin	PatHap17	JN097603	+	M	Ivanhoe Sea Safaris	present study
200	<i>Eubalaena australis</i>	217SS	30.08.2018	2010s	Gansbaai, South Africa	Africa	sloughed skin	CarHapM	KY353271	+	M	Ivanhoe Sea Safaris	present study
201	<i>Eubalaena australis</i>	218SS	30.08.2018	2010s	Gansbaai, South Africa	Africa	sloughed skin	ValHapN	EU290495	+	F	Ivanhoe Sea Safaris	present study
202	<i>Eubalaena australis</i>	219SS	31.08.2018	-	Gansbaai, South Africa	-	sloughed skin	CarHapM	KY353271	-	F	Ivanhoe Sea Safaris	present study
203	<i>Eubalaena australis</i>	220SS	31.08.2018	2010s	Gansbaai, South Africa	Africa	sloughed skin	-	-	+	F	Ivanhoe Sea Safaris	present study
204	<i>Eubalaena australis</i>	221SS	01.09.2018	-	Gansbaai, South Africa	-	sloughed skin	CarHapL	KY353270	-	M	Ivanhoe Sea Safaris	present study
205	<i>Eubalaena australis</i>	222SS	01.09.2018	-	Gansbaai, South Africa	-	sloughed skin	ValHapJ	EU290531	-	F	Ivanhoe Sea Safaris	present study
206	<i>Eubalaena australis</i>	223SS	01.09.2018	-	Gansbaai, South Africa	-	sloughed skin	CarHapP	KY353274	-	M	Ivanhoe Sea Safaris	present study
207	<i>Eubalaena australis</i>	224SS	06.09.2018	-	Gansbaai, South Africa	-	sloughed skin	PatHap17	JN097603	-	M	Ivanhoe Sea Safaris	present study
208	<i>Eubalaena australis</i>	225SS	07.09.2018	-	Gansbaai, South Africa	-	sloughed skin	BakHapF	JN097599	-	M	Ivanhoe Sea Safaris	present study
209	<i>Eubalaena australis</i>	224SS	06.09.2018	2010s	Gansbaai, South Africa	Africa	sloughed skin	PatHap17	JN097603	+	M	Ivanhoe Sea Safaris	present study
210	<i>Eubalaena australis</i>	227SS	08.09.2018	2010s	Gansbaai, South Africa	Africa	sloughed skin	BakHapE	JN097598	+	M	Ivanhoe Sea Safaris	present study
211	<i>Eubalaena australis</i>	228SS	09.09.2018	-	Gansbaai, South Africa	-	sloughed skin	BakHapE	JN097598	-	M	Ivanhoe Sea Safaris	present study
212	<i>Eubalaena australis</i>	229SS	09.09.2018	2010s	Gansbaai, South Africa	Africa	sloughed skin	PatHap17	JN097603	+	M	Ivanhoe Sea Safaris	present study
213	<i>Eubalaena australis</i>	230SS	10.09.2018	2010s	Gansbaai, South Africa	Africa	sloughed skin	-	-	+	M	Ivanhoe Sea Safaris	present study
214	<i>Eubalaena australis</i>	231SS	11.09.2018	-	Gansbaai, South Africa	-	sloughed skin	CarHapEE	KY353289	-	F	Ivanhoe Sea Safaris	present study
215	<i>Eubalaena australis</i>	232SS	15.09.2018	-	Gansbaai, South Africa	-	sloughed skin	CarHapP	KY353274	-	F	Ivanhoe Sea Safaris	present study
216	<i>Eubalaena australis</i>	233SS	15.09.2018	2010s	Gansbaai, South Africa	Africa	sloughed skin	CarHapJ	JN097600	+	M	Ivanhoe Sea Safaris	present study
217	<i>Eubalaena australis</i>	234SS	15.09.2018	2010s	Gansbaai, South Africa	Africa	sloughed skin	CarHapP	KY353274	+	F	Ivanhoe Sea Safaris	present study
218	<i>Eubalaena australis</i>	235SS	16.09.2018	2010s	Gansbaai, South Africa	Africa	sloughed skin	BakHapE	JN097598	+	F	Ivanhoe Sea Safaris	present study
219	<i>Eubalaena australis</i>	236SS	20.09.2018	2010s	Gansbaai, South Africa	Africa	sloughed skin	CarHapX	KY353282	+	F	Ivanhoe Sea Safaris	present study
220	<i>Eubalaena australis</i>	237SS	20.09.2018	2010s	Gansbaai, South Africa	Africa	sloughed skin	-	-	+	M	Ivanhoe Sea Safaris	present study
221	<i>Eubalaena australis</i>	239SS	23.09.2018	2010s	Gansbaai, South Africa	Africa	sloughed skin	CarHapM	KY353271	+	F	Ivanhoe Sea Safaris	present study
222	<i>Eubalaena australis</i>	240SS	24.09.2018	-	Gansbaai, South Africa	-	sloughed skin	CarHapW	KY353281	-	F	Ivanhoe Sea Safaris	present study
223	<i>Eubalaena australis</i>	241SS	29.09.2018	-	Gansbaai, South Africa	-	sloughed skin	CarHapR	KY353276	-	F	Ivanhoe Sea Safaris	present study
224	<i>Eubalaena australis</i>	242SS	29.09.2018	2010s	Gansbaai, South Africa	Africa	sloughed skin	CarHapM	KY353271	+	F	Ivanhoe Sea Safaris	present study
225	<i>Eubalaena australis</i>	243SS	29.09.2018	2010s	Gansbaai, South Africa	Africa	sloughed skin	PatHap17	JN097603	+	F	Ivanhoe Sea Safaris	present study
226	<i>Eubalaena australis</i>	244SS	29.09.2018	2010s	Gansbaai, South Africa	Africa	sloughed skin	BakHapF	JN097599	+	F	Ivanhoe Sea Safaris	present study
227	<i>Eubalaena australis</i>	245SS	30.09.2018	-	Gansbaai, South Africa	-	sloughed skin	valhapDD	GQ389688	-	F	Ivanhoe Sea Safaris	present study
228	<i>Eubalaena australis</i>	246SS	30.09.2018	-	Gansbaai, South Africa	-	sloughed skin	ValHapZ	EU290523	-	F	Ivanhoe Sea Safaris	present study
229	<i>Eubalaena australis</i>	247SS	30.09.2018	2010s	Gansbaai, South Africa	Africa	sloughed skin	ValHapZ	EU290523	+	F	Ivanhoe Sea Safaris	present study
230	<i>Eubalaena australis</i>	248SS	02.10.2018	2010s	Gansbaai, South Africa	Africa	sloughed skin	BakHapE	JN097598	+	F	Ivanhoe Sea Safaris	present study
231	<i>Eubalaena australis</i>	251SS	07.10.2018	2010s	Gansbaai, South Africa	Africa	sloughed skin	CarHapM	KY353271	+	F	Ivanhoe Sea Safaris	present study
232	<i>Eubalaena australis</i>	252SS	08.10.2018	2010s	Gansbaai, South Africa	Africa	sloughed skin	CarHapO	KY353273	+	M	Ivanhoe Sea Safaris	present study
233	<i>Eubalaena australis</i>	253SS	08.10.2018	-	Gansbaai, South Africa	-	sloughed skin	valhapDD	GQ389688	-	F	Ivanhoe Sea Safaris	present study
234	<i>Eubalaena australis</i>	256SS	23.10.2018	2010s	Gansbaai, South Africa	Africa	sloughed skin	ValHapZ	EU290523	+	F	Ivanhoe Sea Safaris	present study
235	<i>Eubalaena australis</i>	257SS	23.10.2018	2010s	Gansbaai, South Africa	Africa	sloughed skin	CarHapEE	KY353289.1	+	F	Ivanhoe Sea Safaris	present study
236	<i>Eubalaena australis</i>	258SS	24.10.2018	-	Gansbaai, South Africa	-	sloughed skin	CarHapP	KY353274	-	-	Ivanhoe Sea Safaris	present study
237	<i>Eubalaena australis</i>	259SS	24.10.2018	-	Gansbaai, South Africa	-	sloughed skin	CarHapL	KY353270	-	-	Ivanhoe Sea Safaris	present study
238	<i>Eubalaena australis</i>	260SS	24.10.2018	2010s	Gansbaai, South Africa	Africa	sloughed skin	CarHapL	KY353270	+	F	Ivanhoe Sea Safaris	present study
239	<i>Eubalaena australis</i>	261SS	25.10.2018	2010s	Gansbaai, South Africa	Africa	sloughed skin	CarHapP	KY353274	+	F	Ivanhoe Sea Safaris	present study
240	<i>Eubalaena australis</i>	262SS	25.10.2018	2010s	Gansbaai, South Africa	Africa	sloughed skin	BakHapE	JN097598	+	F	Ivanhoe Sea Safaris	present study
241	<i>Eubalaena australis</i>	263SS	25.10.2018	2010s	Gansbaai, South Africa	Africa	sloughed skin	ValHapN	EU290495	+	M	Ivanhoe Sea Safaris	present study
242	<i>Eubalaena australis</i>	264SS	26.10.2018	-	Gansbaai, South Africa	-	sloughed skin	ValHapZ	EU290523	-	F	Ivanhoe Sea Safaris	present study
243	<i>Eubalaena australis</i>	265SS	26.10.2018	2010s	Gansbaai, South Africa	Africa	sloughed skin	CarHapP	KY353274	+	F	Ivanhoe Sea Safaris	present study
244	<i>Eubalaena australis</i>	267SS	28.10.2018	2010s	Gansbaai, South Africa	Africa	sloughed skin	CarHapJ	JN097600	+	F	Ivanhoe Sea Safaris	present study
245	<i>Eubalaena australis</i>	268SS	03.11.2018	-	Gansbaai, South Africa	-	sloughed skin	ValHapZ	EU290523	-	F	Ivanhoe Sea Safaris	present study
246	<i>Eubalaena australis</i>	269SS	03.11.2018	-	Gansbaai, South Africa	-	sloughed skin	BakHapE	JN097598	-	F	Ivanhoe Sea Safaris	present study

247	<i>Eubalaena australis</i>	272SS	01.11.2018		2010s	Gansbaai, South Africa	Africa	sloughed skin	CarHapL	KY353270	+	M	Ivanhoe Sea Safaris	present study
248	<i>Eubalaena australis</i>	273SS	01.11.2018		2010s	Gansbaai, South Africa	Africa	sloughed skin	CarHapW	KY353281	+	F	Ivanhoe Sea Safaris	present study
249	<i>Eubalaena australis</i>	274SS	01.11.2018		-	Gansbaai, South Africa	-	sloughed skin	CarHapM	KY353271.1	-	F	Ivanhoe Sea Safaris	present study
250	<i>Eubalaena australis</i>	275SS	01.11.2018		-	Gansbaai, South Africa	-	sloughed skin	CarHapW	KY353281	-	F	Ivanhoe Sea Safaris	present study
251	<i>Eubalaena australis</i>	Nam1	2009-8		2010s	Walvis Bay, Namibia	Africa	biopsy	CarHapU	KY353279	+	F	MRI	present study
252	<i>Eubalaena australis</i>	Nam2	2011-8		2010s	Walvis Bay, Namibia	Africa	biopsy	valhapDD	GQ389688	+	M	MRI	present study
253	<i>Eubalaena australis</i>	465.12	-		1990s	South Africa	Africa	biopsy	-	-	+	-	-	Carrol et al. 2019
254	<i>Eubalaena australis</i>	424.154	-		1990s	South Africa	Africa	biopsy	-	-	+	-	-	Carrol et al. 2019
255	<i>Eubalaena australis</i>	431.2	-		1990s	South Africa	Africa	biopsy	-	-	+	-	-	Carrol et al. 2019
256	<i>Eubalaena australis</i>	431.4	-		1990s	South Africa	Africa	biopsy	-	-	+	-	-	Carrol et al. 2019
257	<i>Eubalaena australis</i>	410.7	-		1990s	South Africa	Africa	biopsy	-	-	+	-	-	Carrol et al. 2019
258	<i>Eubalaena australis</i>	412.23	-		1990s	South Africa	Africa	biopsy	-	-	+	-	-	Carrol et al. 2019
259	<i>Eubalaena australis</i>	419.14	-		1990s	South Africa	Africa	biopsy	-	-	+	-	-	Carrol et al. 2019
260	<i>Eubalaena australis</i>	419.16	-		1990s	South Africa	Africa	biopsy	-	-	+	-	-	Carrol et al. 2019
261	<i>Eubalaena australis</i>	444.3	-		1990s	South Africa	Africa	biopsy	-	-	+	-	-	Carrol et al. 2019
262	<i>Eubalaena australis</i>	444.4	-		1990s	South Africa	Africa	biopsy	-	-	+	-	-	Carrol et al. 2019
263	<i>Eubalaena australis</i>	424.127	-		1990s	South Africa	Africa	biopsy	-	-	+	-	-	Carrol et al. 2019
264	<i>Eubalaena australis</i>	424.144	-		1990s	South Africa	Africa	biopsy	-	-	+	-	-	Carrol et al. 2019
265	<i>Eubalaena australis</i>	424.165	-		1990s	South Africa	Africa	biopsy	-	-	+	-	-	Carrol et al. 2019
266	<i>Eubalaena australis</i>	424.167	-		1990s	South Africa	Africa	biopsy	-	-	+	-	-	Carrol et al. 2019
267	<i>Eubalaena australis</i>	424.179	-		1990s	South Africa	Africa	biopsy	-	-	+	-	-	Carrol et al. 2019
268	<i>Eubalaena australis</i>	410.17	-		1990s	South Africa	Africa	biopsy	-	-	+	-	-	Carrol et al. 2019
269	<i>Eubalaena australis</i>	410.21	-		1990s	South Africa	Africa	biopsy	-	-	+	-	-	Carrol et al. 2019
270	<i>Eubalaena australis</i>	412.5	-		1990s	South Africa	Africa	biopsy	-	-	+	-	-	Carrol et al. 2019
271	<i>Eubalaena australis</i>	412.13	-		1990s	South Africa	Africa	biopsy	-	-	+	-	-	Carrol et al. 2019
272	<i>Eubalaena australis</i>	416.1	-		1990s	South Africa	Africa	biopsy	-	-	+	-	-	Carrol et al. 2019
273	<i>Eubalaena australis</i>	416.7	-		1990s	South Africa	Africa	biopsy	-	-	+	-	-	Carrol et al. 2019
274	<i>Eubalaena australis</i>	416.19	-		1990s	South Africa	Africa	biopsy	-	-	+	-	-	Carrol et al. 2019
275	<i>Eubalaena australis</i>	424.94	-		1990s	South Africa	Africa	biopsy	-	-	+	-	-	Carrol et al. 2019
276	<i>Eubalaena australis</i>	570.3	-		1990s	South Africa	Africa	biopsy	-	-	+	-	-	Carrol et al. 2019
277	<i>Eubalaena australis</i>	409.5	-		1990s	South Africa	Africa	biopsy	-	-	+	-	-	Carrol et al. 2019
278	<i>Eubalaena australis</i>	410.5	-		1990s	South Africa	Africa	biopsy	-	-	+	-	-	Carrol et al. 2019
279	<i>Eubalaena australis</i>	419.12	-		1990s	South Africa	Africa	biopsy	-	-	+	-	-	Carrol et al. 2019
280	<i>Eubalaena australis</i>	445.6	-		1990s	South Africa	Africa	biopsy	-	-	+	-	-	Carrol et al. 2019
281	<i>Eubalaena australis</i>	424.136	-		1990s	South Africa	Africa	biopsy	-	-	+	-	-	Carrol et al. 2019
282	<i>Eubalaena australis</i>	424.169	-		1990s	South Africa	Africa	biopsy	-	-	+	-	-	Carrol et al. 2019
283	<i>Eubalaena australis</i>	424.189	-		1990s	South Africa	Africa	biopsy	-	-	+	-	-	Carrol et al. 2019
284	<i>Eubalaena australis</i>	424.187	-		1990s	South Africa	Africa	biopsy	-	-	+	-	-	Carrol et al. 2019
285	<i>Eubalaena australis</i>	431.5	-		1990s	South Africa	Africa	biopsy	-	-	+	-	-	Carrol et al. 2019
286	<i>Eubalaena australis</i>	431.7	-		1990s	South Africa	Africa	biopsy	-	-	+	-	-	Carrol et al. 2019
287	<i>Eubalaena australis</i>	424.112	-		1990s	South Africa	Africa	biopsy	-	-	+	-	-	Carrol et al. 2019
288	<i>Eubalaena australis</i>	424.180	-		1990s	South Africa	Africa	biopsy	-	-	+	-	-	Carrol et al. 2019
289	<i>Eubalaena australis</i>	410.11	-		1990s	South Africa	Africa	biopsy	-	-	+	-	-	Carrol et al. 2019
290	<i>Eubalaena australis</i>	410.23	-		1990s	South Africa	Africa	biopsy	-	-	+	-	-	Carrol et al. 2019
291	<i>Eubalaena australis</i>	412.9	-		1990s	South Africa	Africa	biopsy	-	-	+	-	-	Carrol et al. 2019
292	<i>Eubalaena australis</i>	413.1	-		1990s	South Africa	Africa	biopsy	-	-	+	-	-	Carrol et al. 2019
293	<i>Eubalaena australis</i>	415.6	-	26.10.2018	1990s	South Africa	Africa	biopsy	-	-	+	-	-	Carrol et al. 2019
294	<i>Eubalaena australis</i>	416.3	-		1990s	South Africa	Africa	biopsy	-	-	+	-	-	Carrol et al. 2019
295	<i>Eubalaena australis</i>	569.18	-		1990s	South Africa	Africa	biopsy	-	-	+	-	-	Carrol et al. 2019
296	<i>Eubalaena australis</i>	417.11	-		1990s	South Africa	Africa	biopsy	-	-	+	-	-	Carrol et al. 2019

347	<i>Eubalaena australis</i>	NSWEau03ea05	-	-	Newcastle (NSW), Australia	Indo-Pacific	biopsy	BakHapB+	JN097595 / JN097594	+	F	-	Carrol et al. 2019
348	<i>Eubalaena australis</i>	NSWEau03ea06	-	-	Merimbula (NSW), Australia	Indo-Pacific	biopsy	PatHap17	JN097603	+	F	-	Carrol et al. 2019
349	<i>Eubalaena australis</i>	NSWEau07EA01	-	-	Australia	Indo-Pacific	biopsy	-	-	+	-	-	Carrol et al. 2019
350	<i>Eubalaena australis</i>	NSWEau08EA01	-	-	Sydney (NSW), Australia	Indo-Pacific	biopsy	BakHapB+	JN097595 / JN097594	+	F	-	Carrol et al. 2019
351	<i>Eubalaena australis</i>	NSWEau10EA03	-	-	Narooma (NSW), Australia	Indo-Pacific	biopsy	BakHapA	JN097593	+	M	-	Carrol et al. 2019
352	<i>Eubalaena australis</i>	NSWEau10EA04	-	-	Narooma (NSW), Australia	Indo-Pacific	biopsy	BakHapE	JN097598	+	M	-	Carrol et al. 2019
353	<i>Eubalaena australis</i>	NSWEau10EA05	-	-	Narooma (NSW), Australia	Indo-Pacific	biopsy	BakHapC	JN097596	+	F	-	Carrol et al. 2019
354	<i>Eubalaena australis</i>	NSWEau10EA06	-	-	Narooma (NSW), Australia	Indo-Pacific	biopsy	BakHapA	JN097593	+	F	-	Carrol et al. 2019
355	<i>Eubalaena australis</i>	NSWMQ13	-	-	Narooma (NSW), Australia	Indo-Pacific	biopsy	BakHapA	JN097593	+	M	-	Carrol et al. 2019
356	<i>Eubalaena australis</i>	NSWMQ37	-	-	NSW, Australia	Indo-Pacific	biopsy	BakHapA	JN097593	+	F	-	Carrol et al. 2019
357	<i>Eubalaena australis</i>	NSWMQ38	-	-	Jarvis Bay (NSW), Australia	Indo-Pacific	biopsy	BakHapC	JN097596	+	F	-	Carrol et al. 2019
358	<i>Eubalaena australis</i>	NSWMQ39	-	-	Jarvis Bay (NSW), Australia	Indo-Pacific	biopsy	BakHapA	JN097593	+	F	-	Carrol et al. 2019
359	<i>Eubalaena australis</i>	QLDMQ27	-	-	Sunshine Coast (QLD), Australia	Indo-Pacific	biopsy	BakHapB+	JN097595 / JN097594	+	F	-	Carrol et al. 2019
360	<i>Eubalaena australis</i>	TASEau07Tas01	-	-	Goats Beach, Storm Bay (TAS), Australia	Indo-Pacific	biopsy	CarHapJ	JN097600	+	M	-	Carrol et al. 2019
361	<i>Eubalaena australis</i>	TASEau07Tas02	-	-	Goats Beach, Storm Bay (TAS), Australia	Indo-Pacific	biopsy	PatHap4	JN097601	+	F	-	Carrol et al. 2019
362	<i>Eubalaena australis</i>	TASEau07Tas03	-	-	Goats Beach, Storm Bay (TAS), Australia	Indo-Pacific	biopsy	BakHapA	JN097593	+	M	-	Carrol et al. 2019
363	<i>Eubalaena australis</i>	TASEau12TAS01	-	-	Dodges Ferry (TAS), Australia	Indo-Pacific	biopsy	BakHapE	JN097598	+	M	-	Carrol et al. 2019
364	<i>Eubalaena australis</i>	TASEau12TAS02	-	-	Seven Mile Beach (TAS), Australia	Indo-Pacific	biopsy	BakHapA	JN097593	+	M	-	Carrol et al. 2019
365	<i>Eubalaena australis</i>	TASEau12TAS03	-	-	Cremonne (TAS), Australia	Indo-Pacific	biopsy	BakHapB+	JN097595 / JN097594	+	F	-	Carrol et al. 2019
366	<i>Eubalaena australis</i>	TASEau12TAS04	-	-	Adventure Bay (TAS), Australia	Indo-Pacific	biopsy	BakHapA	JN097593	+	M	-	Carrol et al. 2019
367	<i>Eubalaena australis</i>	TASEau12TAS05	-	-	Adventure Bay (TAS), Australia	Indo-Pacific	biopsy	BakHapA	JN097593	+	F	-	Carrol et al. 2019
368	<i>Eubalaena australis</i>	TASEau12TAS06	-	-	Adventure Bay (TAS), Australia	Indo-Pacific	biopsy	BakHapA	JN097593	+	M	-	Carrol et al. 2019
369	<i>Eubalaena australis</i>	TASEau12TAS07	-	-	Adventure Bay (TAS), Australia	Indo-Pacific	biopsy	BakHapC	JN097596	+	F	-	Carrol et al. 2019
370	<i>Eubalaena australis</i>	VICMQ29	-	-	Warrnambool (VIC), Australia	Indo-Pacific	biopsy	BakHapC	JN097596	+	M	-	Carrol et al. 2019
371	<i>Eubalaena australis</i>	VICMQ32	-	-	Port Fairy (VIC), Australia	Indo-Pacific	biopsy	BakHapE	JN097598	+	M	-	Carrol et al. 2019
372	<i>Eubalaena australis</i>	VICMQ33	-	-	Port Fairy (VIC), Australia	Indo-Pacific	biopsy	BakHapA	JN097593	+	F	-	Carrol et al. 2019
373	<i>Eubalaena australis</i>	VICMQ34	-	-	Port Fairy (VIC), Australia	Indo-Pacific	biopsy	BakHapC	JN097596	+	M	-	Carrol et al. 2019
374	<i>Eubalaena australis</i>	VICMQ35	-	-	Port Fairy (VIC), Australia	Indo-Pacific	biopsy	PatHap17	JN097603	+	F	-	Carrol et al. 2019
375	<i>Eubalaena australis</i>	VICW01ea13	-	-	Warrnambool (VIC), Australia	Indo-Pacific	biopsy	BakHapA	JN097593	+	F	-	Carrol et al. 2019
376	<i>Eubalaena australis</i>	VICW01ea15	-	-	Warrnambool (VIC), Australia	Indo-Pacific	biopsy	BakHapB+	JN097595 / JN097594	+	F	-	Carrol et al. 2019
377	<i>Eubalaena australis</i>	VICW02ea09	-	-	Warrnambool (VIC), Australia	Indo-Pacific	biopsy	BakHapB+	JN097595 / JN097594	+	M	-	Carrol et al. 2019
378	<i>Eubalaena australis</i>	VICW02ea10	-	-	Warrnambool (VIC), Australia	Indo-Pacific	biopsy	BakHapE	JN097598	+	F	-	Carrol et al. 2019
379	<i>Eubalaena australis</i>	VICW03ea04	-	-	Warrnambool (VIC), Australia	Indo-Pacific	biopsy	BakHapD	JN097597	+	F	-	Carrol et al. 2019
380	<i>Eubalaena australis</i>	VICW04ea01	-	-	Warrnambool (VIC), Australia	Indo-Pacific	biopsy	BakHapA	JN097593	+	F	-	Carrol et al. 2019
381	<i>Eubalaena australis</i>	VICW04ea02	-	-	Warrnambool (VIC), Australia	Indo-Pacific	biopsy	BakHapD	JN097597	+	F	-	Carrol et al. 2019
382	<i>Eubalaena australis</i>	VICW09EA01	-	-	Warrnambool (VIC), Australia	Indo-Pacific	biopsy	BakHapB+	JN097595 / JN097594	+	F	-	Carrol et al. 2019
383	<i>Eubalaena australis</i>	VICW09EA02	-	-	Warrnambool (VIC), Australia	Indo-Pacific	biopsy	BakHapB+	JN097595 / JN097594	+	F	-	Carrol et al. 2019
384	<i>Eubalaena australis</i>	VICWMQ36	-	-	Warrnambool (VIC), Australia	Indo-Pacific	biopsy	BakHapA	JN097593	+	F	-	Carrol et al. 2019
385	<i>Eubalaena australis</i>	VICWmq6	-	-	Australia	Indo-Pacific	biopsy	-	0	+	-	-	Carrol et al. 2019
386	<i>Eubalaena australis</i>	Eau94WA01	-	-	Bremer/Doubtful Is. Bay (WA), Australia	Indo-Pacific	biopsy	SWPJ	JN097605	+	-	-	Carrol et al. 2019
387	<i>Eubalaena australis</i>	Eau94WA02	-	-	Bremer/Doubtful Is. Bay (WA), Australia	Indo-Pacific	biopsy	BakHapA	JN097593	+	M	-	Carrol et al. 2019
388	<i>Eubalaena australis</i>	Eau94WA03	-	-	Bremer/Doubtful Is. Bay (WA), Australia	Indo-Pacific	biopsy	BakHapA	JN097593	+	M	-	Carrol et al. 2019
389	<i>Eubalaena australis</i>	Eau94WA05	-	-	Bremer/Doubtful Is. Bay (WA), Australia	Indo-Pacific	biopsy	-	0	+	-	-	Carrol et al. 2019
390	<i>Eubalaena australis</i>	Eau95WA05	-	-	Bremer/Doubtful Is. Bay (WA), Australia	Indo-Pacific	biopsy	BakHapF	JN097599	+	M	-	Carrol et al. 2019
391	<i>Eubalaena australis</i>	Eau95WA16	-	-	Bremer/Doubtful Is. Bay (WA), Australia	Indo-Pacific	biopsy	BakHapE	JN097598	+	M	-	Carrol et al. 2019
392	<i>Eubalaena australis</i>	Eau95WA10	-	-	Bremer/Doubtful Is. Bay (WA), Australia	Indo-Pacific	biopsy	BakHapC	JN097596	+	M	-	Carrol et al. 2019
393	<i>Eubalaena australis</i>	Eau95WA11	-	-	Bremer/Doubtful Is. Bay (WA), Australia	Indo-Pacific	biopsy	BakHapA	JN097593	+	M	-	Carrol et al. 2019
394	<i>Eubalaena australis</i>	Eau95WA03	-	-	Bremer/Doubtful Is. Bay (WA), Australia	Indo-Pacific	biopsy	BakHapC	JN097596	+	M	-	Carrol et al. 2019
395	<i>Eubalaena australis</i>	Eau95WA08	-	-	Bremer/Doubtful Is. Bay (WA), Australia	Indo-Pacific	biopsy	BakHapC	JN097596	+	F	-	Carrol et al. 2019
396	<i>Eubalaena australis</i>	Eau95WA09	-	-	Bremer/Doubtful Is. Bay (WA), Australia	Indo-Pacific	biopsy	BakHapE	JN097598	+	M	-	Carrol et al. 2019

447	<i>Eubalaena australis</i>	Eau09AI005	-		-	New Zealand	Indo-Pacific	biopsy	-	-	+	-	-	Carrol et al. 2019
448	<i>Eubalaena australis</i>	Eau09AI006	-		-	New Zealand	Indo-Pacific	biopsy	-	-	+	-	-	Carrol et al. 2019
449	<i>Eubalaena australis</i>	Eau09AI017	-		-	New Zealand	Indo-Pacific	biopsy	-	-	+	-	-	Carrol et al. 2019
450	<i>Eubalaena australis</i>	Eau09AI028	-		-	New Zealand	Indo-Pacific	biopsy	-	-	+	-	-	Carrol et al. 2019
451	<i>Eubalaena australis</i>	Eau09AI029	-		-	New Zealand	Indo-Pacific	biopsy	-	-	+	-	-	Carrol et al. 2019
452	<i>Eubalaena australis</i>	Eau09AI038	-		-	New Zealand	Indo-Pacific	biopsy	-	-	+	-	-	Carrol et al. 2019
453	<i>Eubalaena australis</i>	Eau09AI045	-		-	New Zealand	Indo-Pacific	biopsy	-	-	+	-	-	Carrol et al. 2019
454	<i>Eubalaena australis</i>	Eau09AI050	-		-	New Zealand	Indo-Pacific	biopsy	-	-	+	-	-	Carrol et al. 2019
455	<i>Eubalaena australis</i>	Eau09AI057	-		-	New Zealand	Indo-Pacific	biopsy	-	-	+	-	-	Carrol et al. 2019
456	<i>Eubalaena australis</i>	Eau09AI068	-		-	New Zealand	Indo-Pacific	biopsy	-	-	+	-	-	Carrol et al. 2019
457	<i>Eubalaena australis</i>	Eau09AI086	-		-	New Zealand	Indo-Pacific	biopsy	-	-	+	-	-	Carrol et al. 2019
458	<i>Eubalaena australis</i>	Eau09AI087	-		-	New Zealand	Indo-Pacific	biopsy	-	-	+	-	-	Carrol et al. 2019
459	<i>Eubalaena australis</i>	Eau09AI094	-		-	New Zealand	Indo-Pacific	biopsy	-	-	+	-	-	Carrol et al. 2019
460	<i>Eubalaena australis</i>	Eau09AI098	-		-	New Zealand	Indo-Pacific	biopsy	-	-	+	-	-	Carrol et al. 2019
461	<i>Eubalaena australis</i>	Eau09AI104	-		-	New Zealand	Indo-Pacific	biopsy	-	-	+	-	-	Carrol et al. 2019
462	<i>Eubalaena australis</i>	Eau09AI105	-		-	New Zealand	Indo-Pacific	biopsy	-	-	+	-	-	Carrol et al. 2019
463	<i>Eubalaena australis</i>	Eau09AI129	-		-	New Zealand	Indo-Pacific	biopsy	-	-	+	-	-	Carrol et al. 2019
464	<i>Eubalaena australis</i>	Eau09AI130	-		-	New Zealand	Indo-Pacific	biopsy	-	-	+	-	-	Carrol et al. 2019
465	<i>Eubalaena australis</i>	Eau09AI134	-		-	New Zealand	Indo-Pacific	biopsy	-	-	+	-	-	Carrol et al. 2019
466	<i>Eubalaena australis</i>	Eau09AI135	-		-	New Zealand	Indo-Pacific	biopsy	-	-	+	-	-	Carrol et al. 2019
467	<i>Eubalaena australis</i>	Eau09AI148	-		-	New Zealand	Indo-Pacific	biopsy	-	-	+	-	-	Carrol et al. 2019
468	<i>Eubalaena australis</i>	Eau09AI165	-		-	New Zealand	Indo-Pacific	biopsy	-	-	+	-	-	Carrol et al. 2019
469	<i>Eubalaena australis</i>	Eau09AI169	-		-	New Zealand	Indo-Pacific	biopsy	-	-	+	-	-	Carrol et al. 2019
470	<i>Eubalaena australis</i>	Eau09AI185	-		-	New Zealand	Indo-Pacific	biopsy	-	-	+	-	-	Carrol et al. 2019
471	<i>Eubalaena australis</i>	Eau09AI201	-		-	New Zealand	Indo-Pacific	biopsy	-	-	+	-	-	Carrol et al. 2019
472	<i>Eubalaena australis</i>	Eau09AI233	-		-	New Zealand	Indo-Pacific	biopsy	-	-	+	-	-	Carrol et al. 2019
473	<i>Eubalaena australis</i>	Eau09NZ04	-		-	New Zealand	Indo-Pacific	biopsy	-	-	+	-	-	Carrol et al. 2019
474	<i>Eubalaena australis</i>	Eau09NZ14	-		-	New Zealand	Indo-Pacific	biopsy	-	-	+	-	-	Carrol et al. 2019
475	<i>Eubalaena australis</i>	Eau09NZ19	-		-	New Zealand	Indo-Pacific	biopsy	-	-	+	-	-	Carrol et al. 2019

Table S2 Seventeen loci used for microsatellite genotyping of southern right whales. Details include primer sequences, fluorescent label, annealing temperature (TA) and reference.

Locus	sequence 5'-3'	label	TA (°C)*	reference
EV1 F	CCCTGCTCCCCATTCTC	NED	60	Valsecchi and Amos, 1996
EV1 R	ATAAACTCTAATACTTCTCCAA C	NED	60	Valsecchi and Amos, 1996
EV37 F	AGCTTGATTTGGAAGTCATGA	NED	54	Valsecchi and Amos, 1996
EV37 R	TAGTAGAGCCGTGATAAAGTGC	NED	54	Valsecchi and Amos, 1996
EV94 F	ATCCTATTGGTCCTTTTCTGC	FAM	55	Valsecchi and Amos, 1996
EV94 R	AATAGATAGTGATGATGARCACACC	FAM	55	Valsecchi and Amos, 1996
EV14 F	TAAACATCAAAGCAGACCCC	VIC	51	Valsecchi and Amos, 1996
EV14 R	CCAGAGCCAAGGTCAAGAG	VIC	51	Valsecchi and Amos, 1996
GATA28 F	AAAGACTGAGATCTATAGTTA	NED	50	Palsbøll et al., 1997
GATA28 R	CGCTGATAGATTAGTCTAGG	NED	50	Palsbøll et al., 1997
GATA98 F	TGTACCCTGGATGGATAGATT	VIC	50	Palsbøll et al., 1997
GATA98 R	ATGTCTCTCTCACACCTCACC	VIC	50	Palsbøll et al., 1997
RW18 F	AGAGGGAAGCAAAGTGGGA	FAM	60	Waldick et al., 1999
RW18 R	GAAGGNTGCCAGACACCC	FAM	60	Waldick et al., 1999
RW31 F	TATTCATGGAGTGCTTTGG	FAM	54	Waldick et al., 1999
RW31 R	CCTAGAGTCCAGTGTGGTA	FAM	54	Waldick et al., 1999
RW410 F	ATGGCATTACTTCATTCTTT	VIC	50	Waldick et al., 1999
RW410 R	GCCAAACTTACCAAATTGTG	VIC	50	Waldick et al., 1999
RW48 F	CCAATGACTTTTCCCTGTA	NED	50	Waldick et al., 1999
RW48 R	GATACCGCAGTGTGTCCTG	NED	50	Waldick et al., 1999
GT23 F	GTTCCCAGGCTCTGCACTCTG	VIC	58	Bérubé et al., 2000
GT23 R	CATTTCTACCCACCTGTCAT	VIC	58	Bérubé et al., 2000
TR3G1 F	CTCCGCAACAAGAGAGGC	FAM	**	Frasier et al., 2006
TR3G1 R	CTTCCTGGGTACAAGCCC	FAM	**	Frasier et al., 2006
TR3G2 F	CTGCGGTGTTGGTTAATAGC	VIC	50	Frasier et al., 2006
TR3G2 R	CCTGACATTTTCTGTGTCCC	VIC	50	Frasier et al., 2006
TR3F4 F	TGCTCTGCAACAAGAGAAGC	FAM	59	Frasier et al., 2006
TR3F4 R	GCCAAGGTTTTAGAGAGAGTG	FAM	59	Frasier et al., 2006

CA232 F	CACTCAGATTAAGACTTCAGA	FAM	55	Bérubé et al., 2005
CA232 R	GATCACATAATCTTGATCAGA	FAM	55	Bérubé et al., 2005
GT310 F	GAATACTCCCAGTAGTTTCTC	NED	59	Bérubé et al., 2005
GT310 R	TAACTTGTGGAAGATGCCAAC	NED	59	Bérubé et al., 2005
GT122 F	TGTTTGCAGTGACGAATGAAAGG	FAM	55	Carroll et al., 2019
GT122 R	CCTTTTAAAACCCAGAATGTAG	FAM	55	Carroll et al., 2019

*These reactions have cycling conditions of (i) an initial denaturing step at 94 °C for 3 min; (ii) 35 cycles at 94 °C for 30 sec, TA for 30 sec and 72 °C for 30 sec; and (iii) a final extension step at 72 °C for 10 min.

**This primer pair has a touchdown PCR protocol: for the cycling, each annealing temperature is used for five cycles before stepping down to the next annealing temperature; the final annealing temperature is used for 10 cycles, resulting in a total of 30 cycles. Annealing temperatures are 68°C, 64°C, 61°C, 58°C and 55°C (Carroll et al., 2015).

Table S3 Number of samples collected and unique genotypes (which represent individual animals) from *Eubalaena australis* in southern Africa during winter field works.

year of collection	nr of samples collected	QC	nr of unique genotypes	males	females	unknown sex	sample type
2003	1	1	1	0	1	0	biopsy
2007	1	0	0	0	0	1	biopsy
2009	19	17	14	8	6	0	biopsy
2011	1	1	1	1	0	0	biopsy
2012	6	5	5	4	1	0	biopsy
2013	8	7	7	6	1	0	biopsy
2016	39	31	25	9	16	0	sloughed skin
2017	154	115	87	53	34	0	biopsy/sloughed skin
2018	96	56	49	19	30	0	sloughed skin
overall total	325	233	189	100	89	1	

Notes and abbreviations: QC, the number of samples after quality control; unknown sex, the sex could not be genetically determined

Table S4 Estimate of null allele frequency of each locus in each population of *Eubalaena australis*.

Locus	Population	Estimate of null allele frequency
EV1	Africa	0.02436
	South America	0.01280
	Indo-Pacific	0.00433
GT23	Africa	0.02653
	South America	0.00000
	Indo-Pacific	0.01365
GT122	Africa	0.03006
	South America	0.06707
	Indo-Pacific	0.00006
RW18	Africa	0.03134
	South America	0.00559
	Indo-Pacific	0.05365
RW410	Africa	0.03512
	South America	0.00000
	Indo-Pacific	0.03109
CA232	Africa	0.02572
	South America	0.01208
	Indo-Pacific	0.02259
GATA98	Africa	0.05334
	South America	0.00001
	Indo-Pacific	0.00002
RW48	Africa	0.06065
	South America	0.00000
	Indo-Pacific	0.00001
EV37	Africa	0.08028

	South America	0.01092
	Indo-Pacific	0.02083
TR3G1	Africa	0.20843
	South America	0.19319
	Indo-Pacific	0.07144
TR3G2	Africa	0.01094
	South America	0.03341
	Indo-Pacific	0.00000
EV14	Africa	0.05660
	South America	0.02330
	Indo-Pacific	0.02499
EV94	Africa	0.00000
	South America	0.03550
	Indo-Pacific	0.02416
GATA28	Africa	0.01123
	South America	0.05152
	Indo-Pacific	0.00000
GT310	Africa	0.00010
	South America	0.00000
	Indo-Pacific	0.00001
RW31	Africa	0.03508
	South America	0.00001
	Indo-Pacific	0.00000
TR3F4	Africa	0.04436
	South America	0.00000
	Indo-Pacific	0.02504

Table S5 Genotype profiles of southern right whales recaptured in South Africa during field work. Genotype comprise genetically identified sex, mitochondrial control region (haplotype name as described in Carroll et al., 2019) and multilocus genotype (EV1 - TR3F4). Nloci describes the number of loci each sample is amplified at and NM the number of matching loci, the year of sample collection is also stated, for column SEX F represents female and M represents male. Missing data are marked as "0"

Sample code	year of capture	haplotype	sex	NM	Nloci	EV1	EV1	GT23	GT23	GT122	GT122	RW18	RW18	RW410	RW410	CA232	CA232	GATA98	GATA98	RW48	RW48	EV37	EV37	TR3G1	TR3G1	TR3G2	TR3G2	EV14	EV14	EV94	EV94	GATA28	GATA28	GT310	GT310	RW31	RW31	TR3F4	TR3F4
419.10	1990s	0	0	14	16	0	0	116	118	138	142	187	195	195	195	140	140	112	116	108	118	203	203	210	222	180	184	133	133	196	196	166	174	96	102	123	123	305	309
B14	2017	CarHapO	M		16	122	122	116	118	138	142	187	195	195	195	140	140	112	116	108	118	0	0	210	222	180	184	133	133	196	196	166	174	96	102	123	123	305	309
415.6	1990s	0	0	9	17	122	136	118	118	138	138	187	225	205	209	140	142	116	116	122	122	191	191	226	238	172	176	133	133	196	196	178	182	100	100	117	121	301	305
266SS	2018	BakHapC	M		11	0	0	118	118	138	138	187	205	205	209	140	142	0	0	0	0	191	191	0	0	172	172	133	133	196	196	0	0	100	100	117	121	0	0
EA1002	2009	CarHapU	F	16	15	124	134	110	120	138	140	193	197	0	0	140	148	112	112	126	126	0	0	238	238	172	176	133	133	200	200	174	178	96	102	123	123	309	333
EA1004	2009	CarHapU	F		14	0	0	110	120	138	140	193	197	0	0	140	148	112	112	126	126	0	0	238	238	172	176	133	133	200	200	174	178	96	102	123	123	309	333
EA1012	2009	CarHapL	M	17	15	126	130	114	116	138	138	189	193	0	0	140	140	108	112	120	120	0	0	206	206	180	184	133	135	196	200	166	174	100	102	117	121	317	329
EA1014	2009	CarHapL	M		15	126	130	114	116	138	138	189	193	0	0	140	140	108	112	120	120	0	0	206	206	180	184	133	135	196	200	166	174	100	102	117	121	317	329
EA1013	2009	CarHapX	F	11	13	0	0	118	120	140	144	187	193	0	0	140	142	0	0	122	124	0	0	238	242	180	184	133	133	200	200	166	180	94	100	123	125	301	333
126SS	2017	CarHapX	F		12	124	136	118	120	0	0	187	193	211	211	140	142	0	0	118	120	0	0	238	242	0	0	133	135	200	200	166	180	94	100	123	125	0	0
EAFB_4	2012	CarHapU	M	15	16	122	124	112	116	138	140	195	197	197	211	140	148	112	120	106	142	0	0	202	210	176	176	133	133	196	200	170	178	96	100	121	123	305	305
EAFB_5	2012	CarHapU	M		15	122	124	112	116	138	140	195	197	197	211	140	148	112	112	0	0	0	0	202	210	176	176	133	133	196	200	170	178	96	100	121	123	305	305
SRW02	2013	PatHap17	M	10	15	126	158	116	116	138	138	193	197	0	0	140	144	108	112	108	122	0	0	230	238	172	180	135	137	196	200	166	174	100	102	121	123	301	356
203SS	2018	PatHap17	M		11	126	158	116	116	138	138	193	197	197	201	140	144	108	108	0	0	0	0	230	238	172	180	0	0	0	0	0	0	100	102	121	123	0	0
22SS	2016	CarHapM	F	16	13	126	140	114	116	0	0	187	235	205	209	146	148	108	124	0	0	0	0	218	222	176	176	139	139	196	196	0	0	98	102	121	125	305	325
25SS	2016	CarHapM	F		13	126	140	114	116	0	0	187	187	0	0	146	148	108	124	0	0	189	199	218	222	176	176	139	139	196	196	0	0	98	102	121	125	305	325
48S	2016	ValHapN	M	16	15	134	136	114	116	0	0	193	195	197	203	142	148	112	116	0	0	189	203	206	222	172	184	133	137	196	200	166	170	96	100	125	125	301	301
43SS	2017	ValHapN	M		15	0	0	114	116	130	140	193	195	197	203	142	148	112	116	120	124	0	0	206	222	172	184	133	137	196	200	166	170	96	100	125	125	301	301
78SS	2017	ValHapN	M		17	134	136	114	116	130	140	193	195	193	195	142	148	112	116	120	124	189	203	206	222	172	184	133	137	196	200	166	170	96	100	125	125	301	301
18SS	2016	BakHapE	F	16	13	122	140	114	120	138	140	189	221	200	211	140	140	0	0	0	0	0	0	222	222	172	172	139	139	196	196	0	0	96	96	123	127	301	305
137SS	2017	BakHapE	F		17	122	140	114	120	138	140	189	221	200	211	140	140	112	112	106	118	203	203	222	222	172	172	133	139	196	196	170	174	96	96	123	127	301	305
138SS	2017	BakHapE	F		17	122	140	114	120	138	140	189	221	200	211	140	140	112	112	106	118	203	203	222	222	172	172	133	139	196	196	170	174	96	96	123	127	301	305
35SS	2016	PatHap17	F	16	13	122	124	112	116	0	0	193	193	205	211	142	142	0	0	0	0	0	0	210	238	184	188	131	133	196	200	166	180	100	100	121	121	301	333
37SS	2016	PatHap17	F		12	122	124	112	116	0	0	193	193	0	0	142	142	0	0	0	0	0	0	210	238	184	188	131	133	196	200	166	180	100	100	121	121	301	333
38SS	2016	PatHap17	F		12	122	124	112	116	0	0	193	193	205	211	142	142	0	0	0	0	0	0	210	238	184	188	131	133	196	200	166	180	100	100	121	121	301	333
42SS	2017	PatHap17	F		16	122	124	112	116	138	144	193	193	205	211	142	142	104	112	118	122	199	203	210	238	184	188	131	133	196	200	0	0	100	100	121	121	301	301
40SS	2017	CarHapO	F	16	16	126	132	116	118	140	144	193	237	195	207	140	148	116	116	120	126	193	199	210	210	172	180	133	133	196	196	166	170	100	100	117	127	0	0
44SS	2017	CarHapO	F		16	126	132	0	0	140	144	193	237	195	207	140	148	116	116	120	126	193	199	210	210	172	180	133	133	196	196	166	170	100	100	117	127	301	305
49SS	2017	CarHapO	F		14	0	0	116	118	140	144	193	237	0	0	140	148	0	0	118	118	193	199	210	210	172	180	133	133	196	196	166	170	100	100	117	127	301	305
61SS	2017	CarHapR	M	13	14	0	0	114	118	138	142	189	193	0	0	140	142	116	116	120	120	0	0	210	238	176	180	133	141	196	196	178	178	94	98	117	123	301	333
74SS	2017	CarHapR	M		14	136	138	114	118	138	142	189	193	0	0	140	142	0	0	0	0	203	205	210	238	176	180	133	141	196	196	178	178	94	98	117	123	301	333
46SS	2017	CarHapP	F	13	13	122	136	0	0	0	0	187	187	207	211	138	140	0	0	118	120	193	193	206	222	176	184	133	133	196	196	166	170	96	100	123	125	0	0
47SS	2017	CarHapP	F		14	122	122	0	0	0	0	0	207	211	138	140	112	116	118	120	193	193	206	222	176	184	133	133	196	196	166	170	96	100	123	125	301	321	
80SS	2017	BakHapE	M	12	14	126	126	112	114	138	140	187	197	0	0	142	148	0	0	118	118	193	205																

145SS	2017	CarHapU	F	17	16	124	138	110	114	138	144	187	195	201	211	140	148	0	0	108	122	199	201	238	238	172	176	133	135	196	196	170	174	96	102	123	125	301	305	
150SS	2017	CarHapO	F	17	17	122	122	112	112	138	140	229	241	195	203	140	148	112	116	118	120	193	203	206	206	172	184	129	133	196	196	166	170	100	102	125	127	305	317	
151SS	2017	CarHapO	F		17	17	122	122	112	112	138	140	229	241	195	203	140	148	112	116	118	120	193	203	206	206	172	184	129	133	196	196	166	170	100	102	125	127	305	317
153SS	2017	CarHapO	F		14	122	122	112	112	0	0	229	241	195	203	140	148	112	116	0	0	0	0	206	206	172	184	129	133	196	196	166	170	100	102	125	127	305	317	
156SS	2017	CarHapEE	M	14	14	124	136	112	116	138	144	187	197	203	211	148	148	0	0	120	120	0	0	210	210	172	184	133	141	196	200	170	178	100	100	123	127	0	0	
158SS	2017	CarHapEE	M		14	14	124	136	112	116	138	144	187	197	203	211	148	148	112	116	118	120	0	0	0	0	172	184	133	141	196	200	170	178	100	100	123	127	0	0
159SS	2017	CarHapEE	M		12	124	136	112	116	0	0	187	197	203	211	148	148	0	0	0	0	193	193	0	0	172	184	133	141	196	200	170	178	100	100	123	127	0	0	
160SS	2017	CarHapS	F	12	16	122	126	114	116	138	140	187	199	197	197	140	140	116	120	118	122	195	203	202	202	176	184	122	137	196	200	166	166	100	100	123	123	0	0	
173SS	2017	CarHapS	F		14	122	126	114	116	0	0	187	199	197	197	140	140	120	120	118	122	195	203	202	202	176	184	0	0	200	200	0	0	100	100	123	123	305	333	
169SS	2017	ValHapB	F	16	17	124	158	118	118	134	142	193	193	197	203	142	148	116	116	118	118	191	199	206	222	168	180	133	139	196	200	166	174	100	100	119	125	305	305	
171SS	2017	ValHapB	F		16	16	124	158	118	118	134	142	193	193	197	203	142	148	112	116	118	118	191	199	206	222	168	180	133	139	196	200	166	174	100	100	119	125	0	0
175SS	2017	ValHapB	F		15	124	158	118	118	134	142	193	193	197	203	142	148	108	116	118	118	0	0	206	222	168	180	133	139	196	200	166	174	100	100	119	125	0	0	
B17	2017	BakHapA	F	13	14	126	138	112	114	138	138	187	187	187	187	140	148	116	124	118	122	203	205	214	238	168	184	133	133	0	0	0	0	0	123	123	305	333		
B19	2017	BakHapA	F		17	126	138	112	114	138	138	187	187	199	205	140	148	116	124	118	122	203	205	214	238	168	184	133	133	196	196	178	182	96	96	123	123	305	333	
B21	2017	PatHap17	M	15	17	126	130	110	116	134	138	189	235	189	189	138	138	112	116	122	126	189	203	206	214	176	184	133	137	196	200	170	178	96	102	123	125	301	313	
B23	2017	PatHap17	M		15	15	126	130	110	116	134	138	189	235	0	0	138	138	112	116	122	126	189	203	206	214	176	184	0	0	196	200	170	178	96	102	123	125	301	313
52SS	2017	N/A	M	8	15	0	0	114	116	138	142	195	195	0	0	148	148	112	112	126	126	195	195	206	206	168	176	135	137	198	200	170	174	100	100	121	121	301	305	
226SS	2018	BakHapF	M		13	122	134	114	114	138	138	195	195	203	205	148	148	112	112	0	0	195	195	0	0	168	176	0	0	198	200	170	174	100	100	0	0	305	305	
196SS	2018	BakHapE	M	14	17	140	144	110	114	140	140	187	197	199	205	140	148	116	116	116	116	193	193	202	206	172	176	133	133	196	200	162	166	100	102	117	127	309	337	
197SS	2018	BakHapE	M		14	14	140	144	110	114	140	140	187	197	199	205	140	148	116	116	116	116	0	0	202	206	172	176	135	135	196	200	162	166	100	102	0	0	0	0
209SS	2018	BakHapF	M	7	12	134	134	114	116	138	138	193	195	205	207	140	140	124	124	124	124	193	193	0	0	0	0	0	0	196	196	0	0	98	100	125	125	0	0	
212SS	2018	BakHapF	M		16	130	134	114	116	138	138	193	195	205	207	140	148	120	124	0	0	189	193	206	222	172	176	137	145	196	196	166	170	100	100	123	125	301	301	
212SS	2018	BakHapF	M	15	16	130	134	114	116	138	138	193	195	205	207	140	148	120	124	0	0	189	193	206	222	172	176	137	145	196	196	166	170	100	100	123	125	301	301	
213SS	2018	BakHapF	M		15	15	130	134	114	116	138	138	193	195	205	207	140	148	112	116	0	0	189	193	206	222	172	176	0	0	196	196	166	170	100	100	123	125	301	301

Table S6 a) pairwise F_{ST} with p-value in the bracket and b) ϕ_{ST} in between African regions. Both analyses are based on 192 sampled individuals of *Eubalaena australis* collected in 2010s period. SA = South Africa; Nam = Namibia. NA- not available.

a)

	SA_Gansbaai	SA_False Bay	SA_St. Helena Bay	SA_Stillbay	Nam_Walvis Bay
SA_Gansbaai	0.0000				
SA_False Bay	-0.0047 (0.43000)	0.0000			
SA_St. Helena Bay	-0.0006 (0.15500)	0.0058 (0.62000)	0.0000		
SA_Stillbay	NA	NA	NA	0.0000	
Nam_Walvis Bay	-0.0347	-0.0163	-0.0569	NA	0.0000

b)

	SA_Gansbaai	SA_False Bay	SA_St. Helena Bay	SA_Stillbay
SA_False Bay	0.037			
SA_St. Helena Bay	-0.013	-0.024		
SA_Stillbay	0.123	0.141	0.034	
Nam_Walvis Bay	0.129	-0.167	-0.011	0.037

Table S7 a) pairwise F_{ST} between populations according to geographical origin of 410 microsatellite genotypes of *Eubalaena australis*. The p-value is stated in the brackets b) ϕ_{ST} for mtDNA of *Eubalaena australis* based on 1602 sequences. The * marks significant values at the 5% nominal level.

a)

	Africa	America	IndoPacific
Africa	0.0000		
America	0.0021* (0.01667)	0.0000	
IndoPacific	0.0101* (0.01667)	0.0118* (0.01667)	0.0000

b)

	Africa	America	IndoPacific
Africa	0.00000		
America	0.07759 *	0.00000	
IndoPacific	0.23217*	0.16219*	0.00000

Table S8 Gene flow rates for global population of *Eubalaena australis* based on 414 microsatellite genotypes and estimates in BayesAss software a) comparison between South Atlantic and Indo-Pacific b) comparison between Africa, South America and Indo-Pacific.

a)

	from population	
in population	South Atlantic	Indo-Pacific
South Atlantic	0.9969 (0.0027)	0.0031 (0.0027)
Indo-Pacific	0.3066 (0.0133)	0.6934 (0.0133)

b)

	from population		
in population	Africa	Argentina	IndoPacific
Africa	0.9939 (0.0040)	0.0023 (0.0021)	0.0038 (0.0034)
Argentina	0.3192 (0.0097)	0.6735 (0.0067)	0.0073 (0.0071)
IndoPacific	0.3035 (0.0135)	0.0026 (0.0025)	0.6939 (0.0133)

Supplementary references

- Bérubé, M., Jørgensen, H., McEwing, R., & Palsbøll, P. J. (2000). Polymorphic di-nucleotide microsatellite loci isolated from the humpback whale, *Megaptera novaeangliae*. *Molecular Ecology*, 9(12), 2181–2183. <https://doi.org/10.1046/j.1365-294X.2000.105315.x>
- Bérubé, M., Rew, M. B., Skaug, H., Jørgensen, H., Robbins, J., Best, P., ... & Palsbøll, P. J. (2005). Polymorphic microsatellite loci isolated from humpback whale, *Megaptera novaeangliae* and fin whale, *Balaenoptera physalus*. *Conservation Genetics*, 6(4), 631–636. <https://doi.org/10.1007/s10592-005-9017-5>
- Carroll, E. L., Alderman, R., Bannister, J. L., Bérubé, M., Best, P. B., Boren, L., ... & Gaggiotti, O. E. (2019). Incorporating non-equilibrium dynamics into demographic history inferences of a migratory marine species. *Heredity*, 122(1), 53–68. <https://doi.org/10.1038/s41437-018-0077-y>
- Carroll, E. L., Baker, C. S., Watson, M., Alderman, R., Bannister, J., Gaggiotti, O. E., ... & Harcourt, R. (2015). Cultural traditions across a migratory network shape the genetic structure of southern right whales around Australia and New Zealand. *Scientific reports*, 5(1), 1–15. <https://doi.org/10.1038/srep16182>
- Frasier, T. R., Rastogi, T., Brown, M. W., Hamilton, P. K., Kraus, S. D., & White, B. N. (2006). Characterization of tetranucleotide microsatellite loci and development and validation of multiplex reactions for the study of right whale species (genus *Eubalaena*). *Molecular Ecology Notes*, 6(4), 1025–1029. <https://doi.org/10.1111/j.1471-8286.2006.01417.x>
- Palsbøll, P. J., Bérubé, M., Larsen, A. H., & Jørgensen, H. (1997). Primers for the amplification of tri- and tetramer microsatellite loci in baleen whales. *Molecular Ecology*, 6(9), 893–895. <https://doi.org/10.1046/j.1365-294X.1997.d01-214.x>
- Valsecchi, E., & Amos, W. (1996). Microsatellite markers for the study of cetacean populations. *Molecular Ecology*, 5(1), 151–156. <https://doi.org/10.1111/j.1365-294X.1996.tb00301.x>
- Waldick, R. C., Brown, M. W., & White, B. N. (1999). Characterization and isolation of microsatellite loci from the endangered North Atlantic right whale. *Molecular Ecology*, 8(10), 1763–1765. <https://doi.org/10.1046/j.1365-294x.1999.00723-6.x>