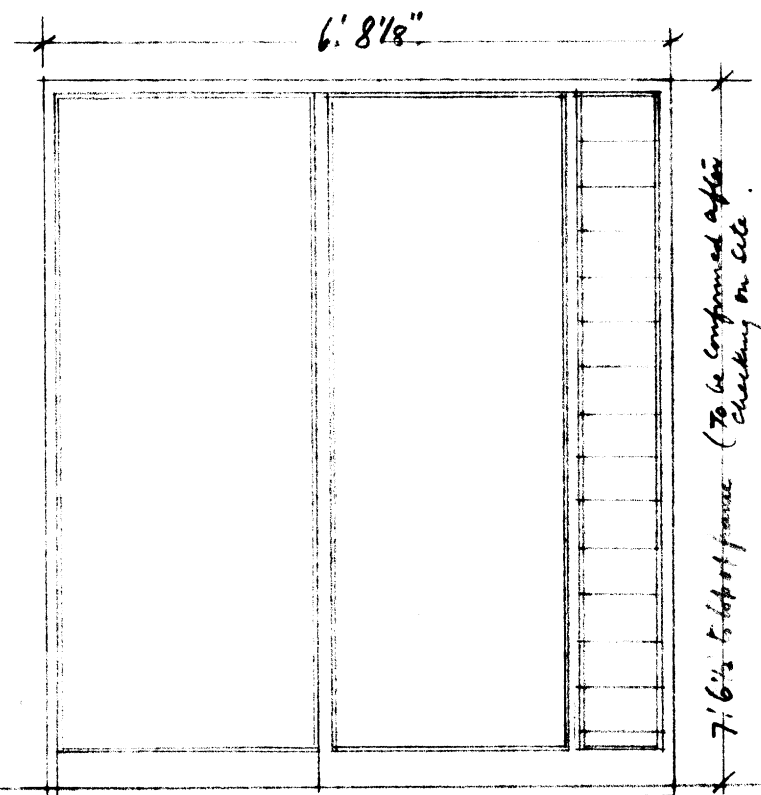
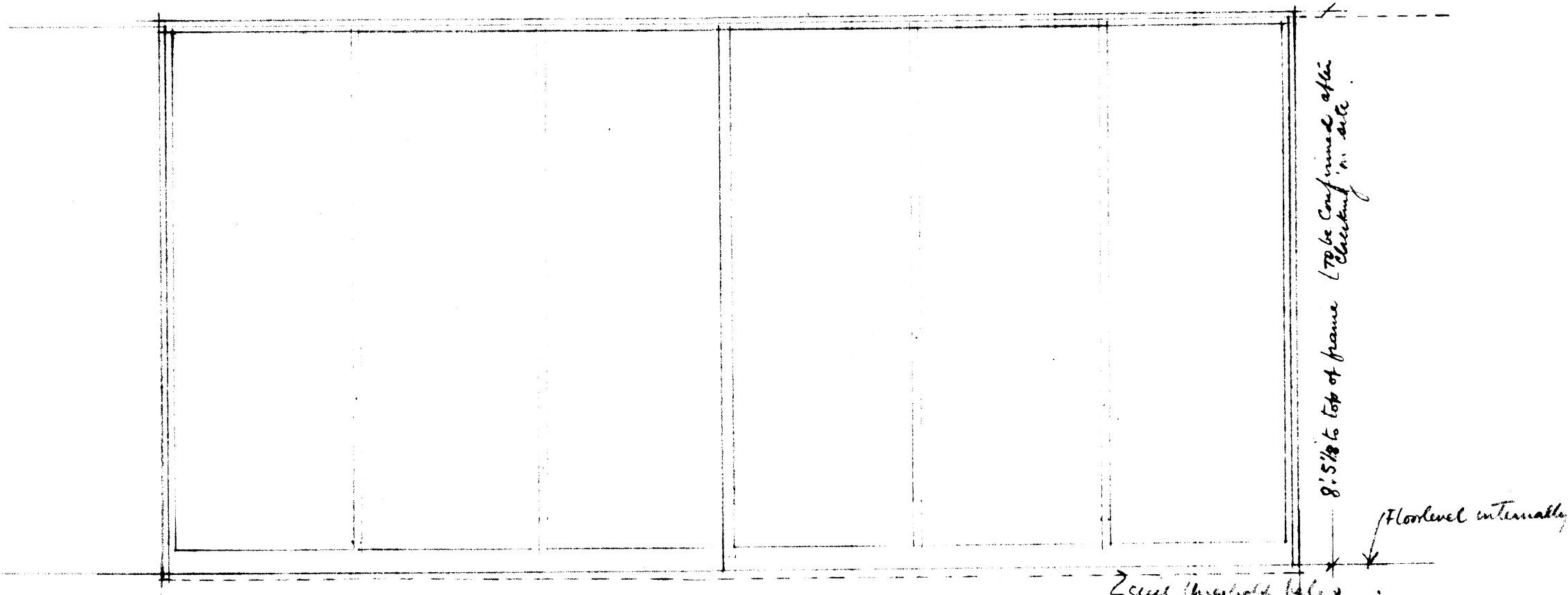


STEEL SLIDING DOORS for the home of Mr J. G. H. LOUBSER, ERF 206 SILVER STREET MUCKLENEUK, PRETORIA.

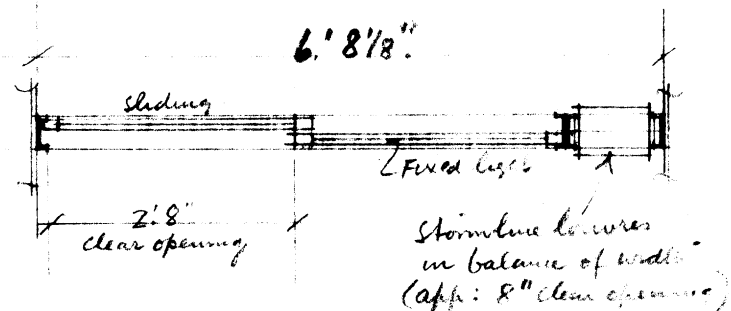
NOTE. Sliding sections must fit exactly over each other when fully open. There special handles to be discussed & approved.
 NO LOCKS required, only approved bolts for fixing in closed position.



Inside elevation of sliding doors (one leaf fixed)

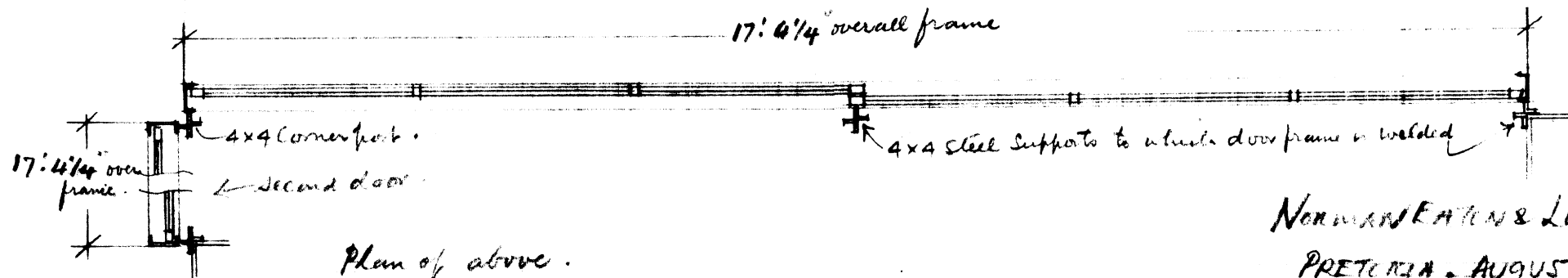


Inside elevation of sliding doors. (Both leaves slide)



Plan of above

Nº 5 REQUIRED. One as above. Four with louvers on left



Plan of above.

Nº 2 REQUIRED Fixed at right angles to one another as shown

NORMAN EATON & LOWE ARCHITECTS

PRETORIA, AUGUST 1963

Dwg. NO. P. 306/4.