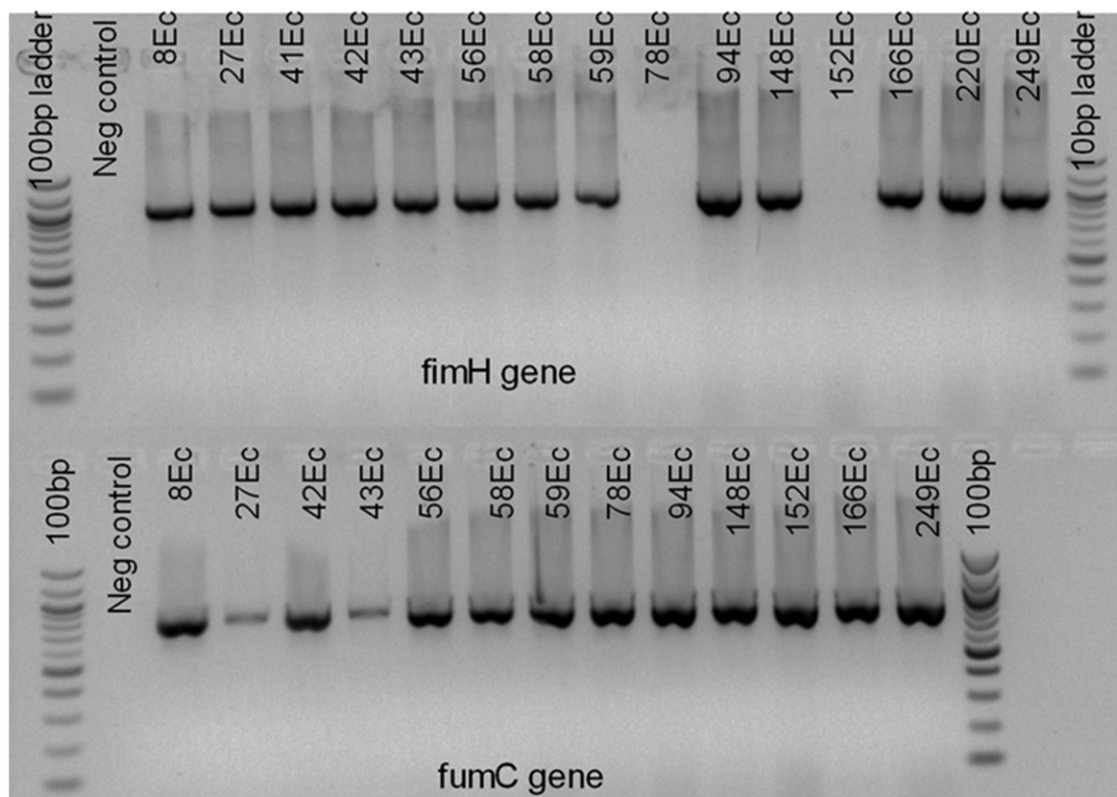


## Supplementary Material



**Supplementary Fig. 1.** Conventional PCR agarose gel electrophoresis for *fumC* and *fimH* genes. Note: Lanes 1 and 18 in the above gel: 100kb DNA ladder; lanes 2: negative control; lanes 3 to 17 are ExPEC strains tested; *fimH* amplicon size: 975bp; Lane 1 and 16 in the gel below: 100kb DNA ladder; lanes 2: negative control; lanes 3 to 15 are ExPEC strains tested; *fumC* amplicon size: 806 bp; Empty lanes are ExPEC strains which were negative for a respective gene. (PNG 697 kb)