

Pairings of opposite mating types of *Teratosphaeria destructans* from Malaysia

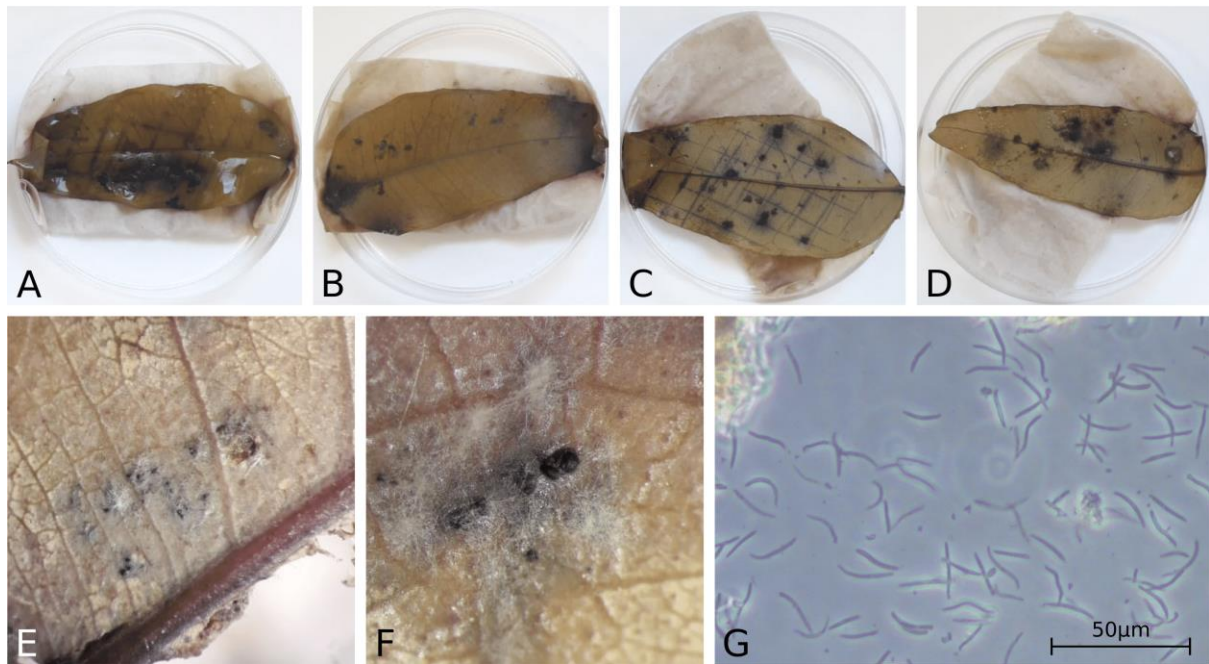


FIGURE S5. Pairings of opposite mating types of *Teratosphaeria destructans* on *Eucalyptus grandis* leaves (A-D). Leaves were either wounded (A, C) with a scalpel blade or left unwounded (B, D) and incubated with the abaxial (A, B) or adaxial (C, D) leaf side on damp tissue paper. Mycelial growth and black necrotic lesions were observed on all leaf treatments (A-D). Asexual pycnidia (E, F) harbouring conidial spores (G) formed on the abaxial side of leaf treatment A.