

Discriminant analysis of principal components for seven *Teratosphaeria destructans* populations.

Population structure was calculated for the full *Teratosphaeria destructans* dataset using a discriminant analysis of principal components (DAPC) (Jombart, 2008). Individuals were assigned to four clusters (K). The cluster grouping are shown in Figure 1B.

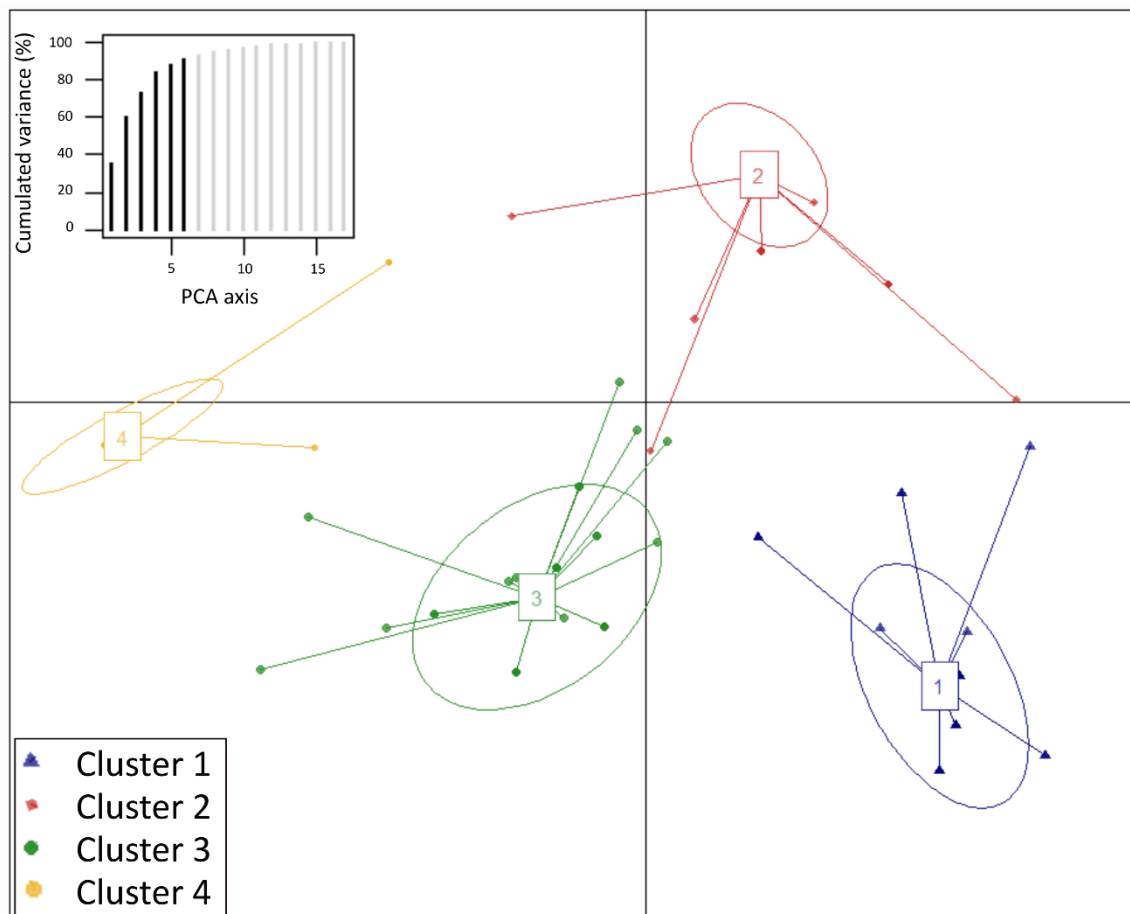


FIGURE S4. A scatter plot of the discriminant analysis of principal components (DAPC) and six retained principle components (insert top left) comprising of 98.9% of the conserved genetic variance.