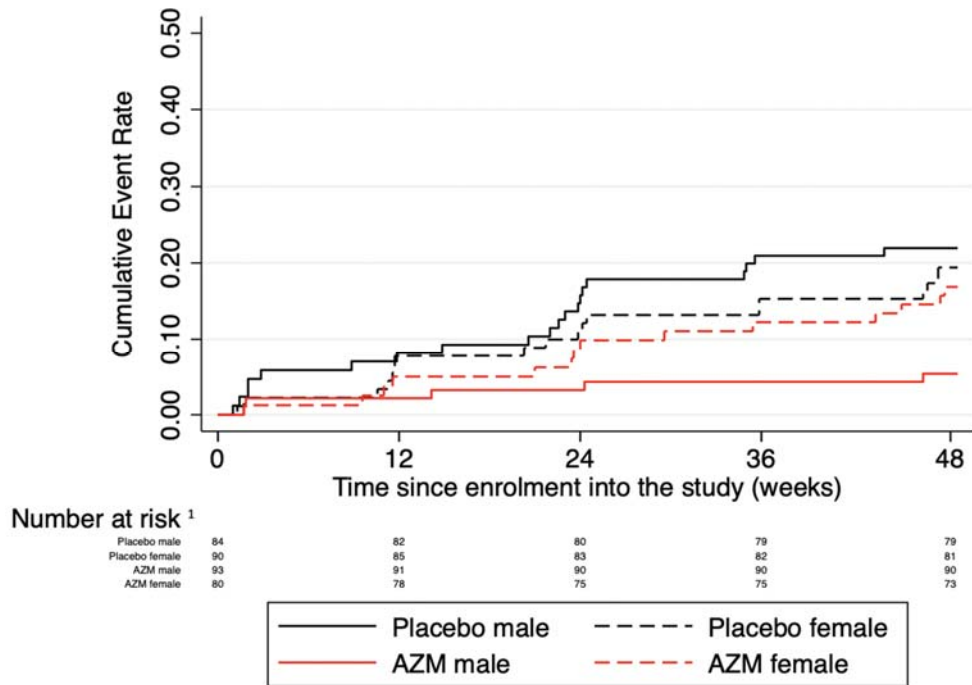


Supplementary Figures

Figure S1: Cumulative event curve by trial arm and sex



¹Censored number are not recorded separately. Participants who experienced the event of interest (ARE) were retained in the at risk group (as participants can experience multiple AREs), so any decrease in the number of participants between time points is due to censoring only (from loss to follow up or death).

Figure S2: Cumulative event curve by trial arm and FEV₁ Z-score

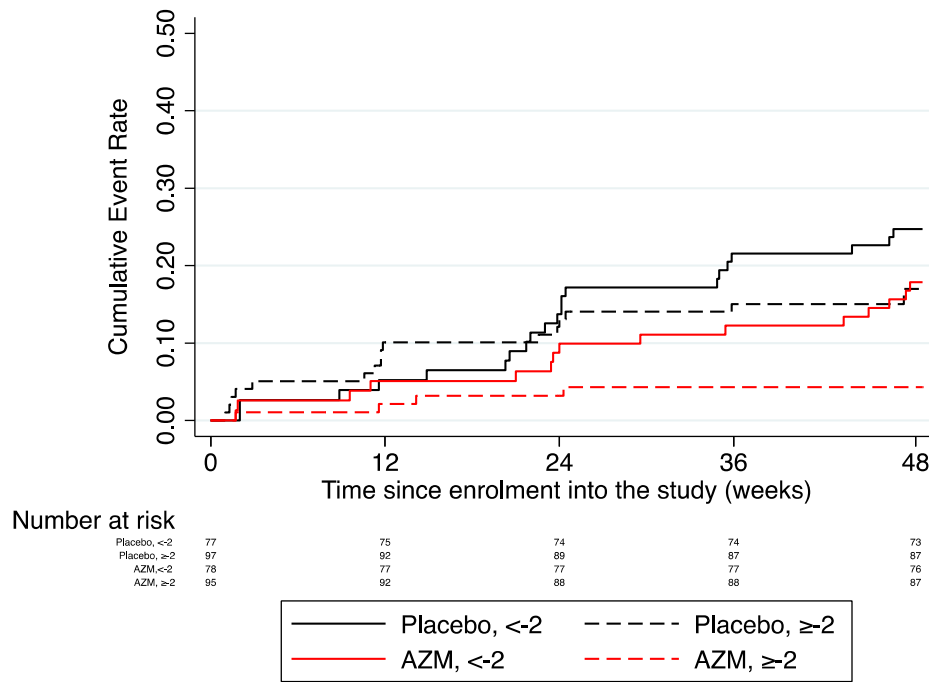


Figure S3: Cumulative event curve by trial arm and ART line

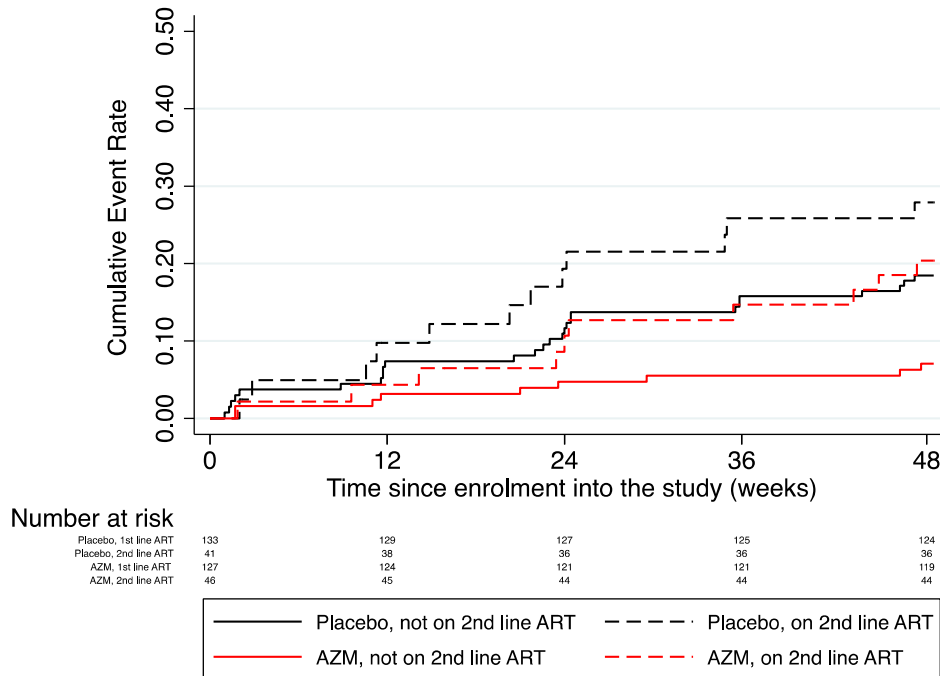


Figure S4: Cumulative event curve by trial arm and presence of a cough at baseline

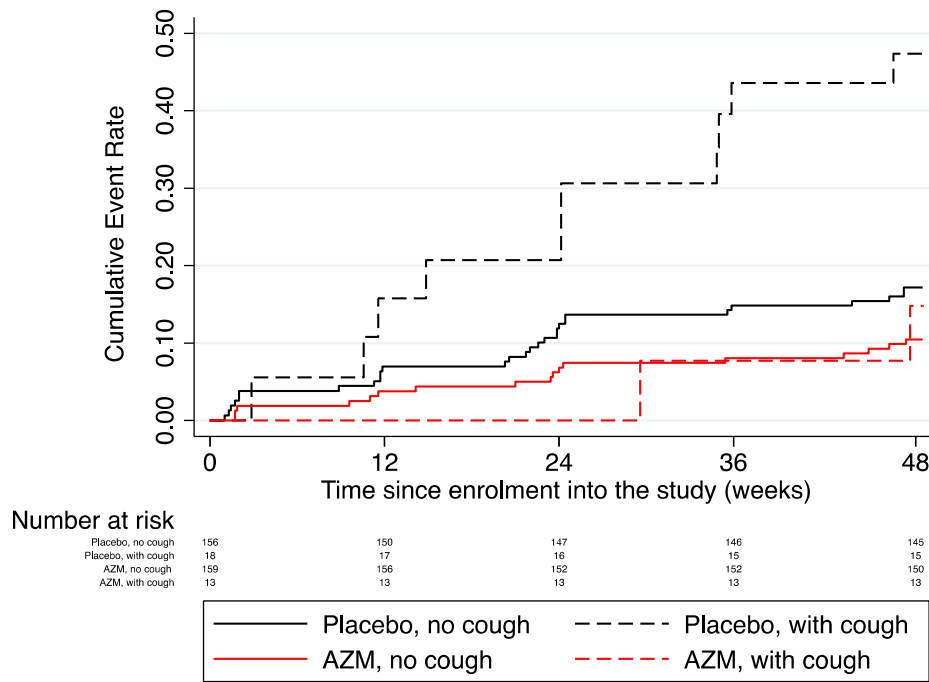


Figure S5: Cumulative event curve by trial arm and presence of an abnormal respiratory rate at baseline

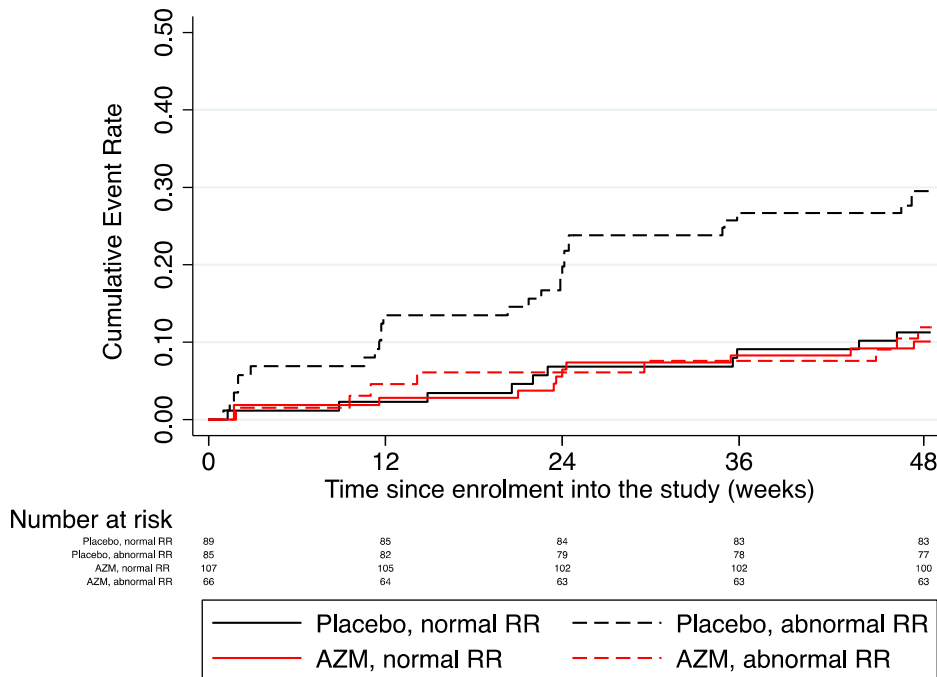


Figure S6: Cumulative event curve by trial arm and resistance to AZM at baseline

