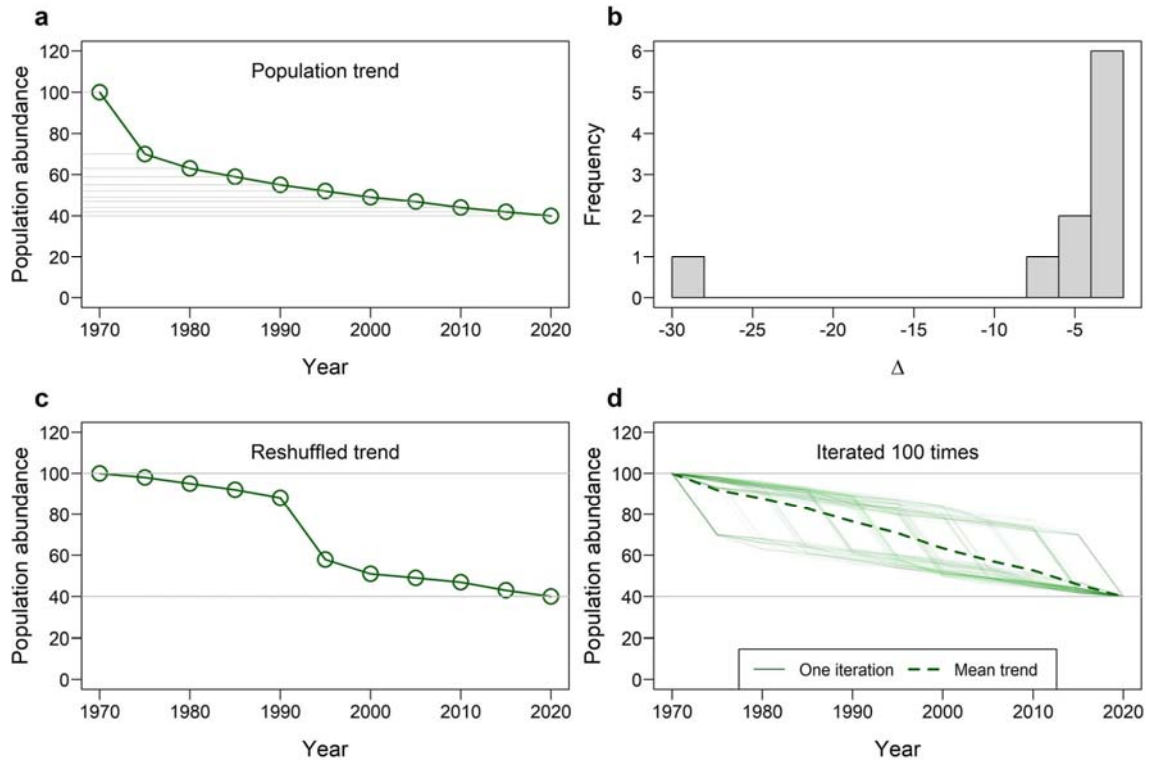


Extended Data Fig. 7: The reshuffling null model used to account for random population fluctuations.

From: Random population fluctuations bias the Living Planet Index



a, The incremental changes in an empirical time series (Δ) were used to identify, **b**, a distribution of Δ values. **c**, The reshuffled trajectory was simulated by sampling from the distribution of Δ , without replacement, to simulate a time series with identical starting and ending populations as the empirical time series (horizontal grey lines). **d**, Iterating this 100 times generated a series of trajectories (light green lines), which have a mean trajectory that approximates a linear decline (dashed green line).