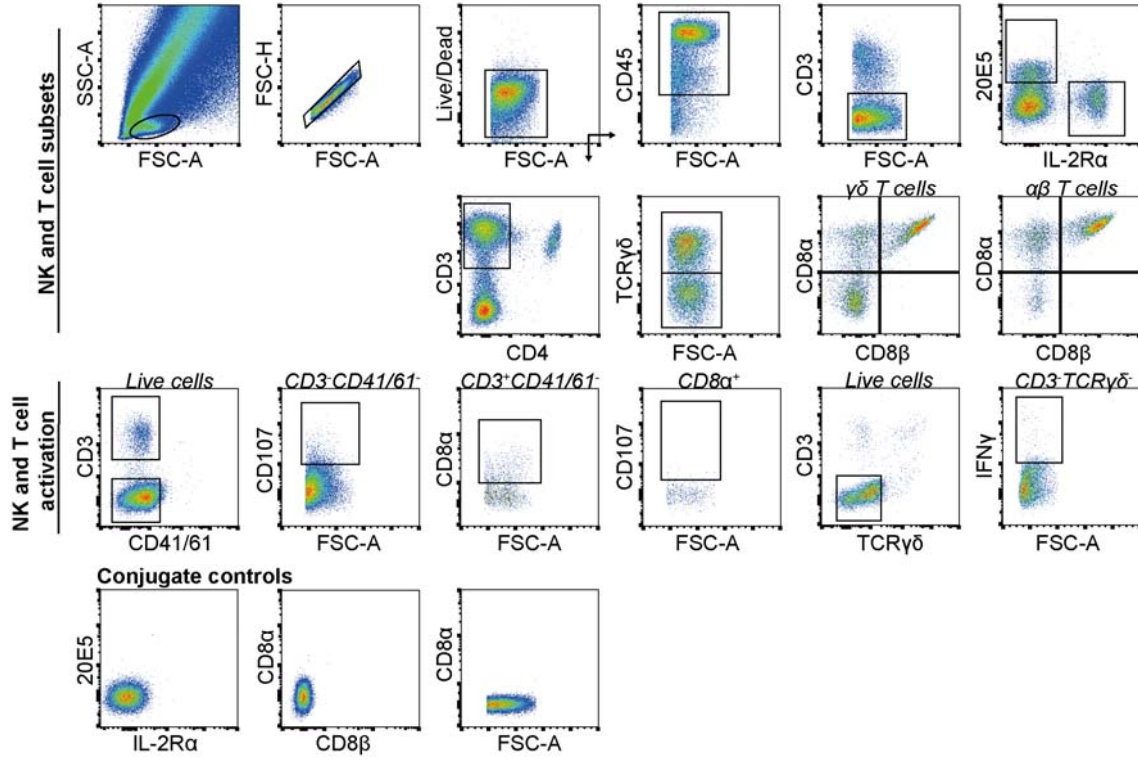
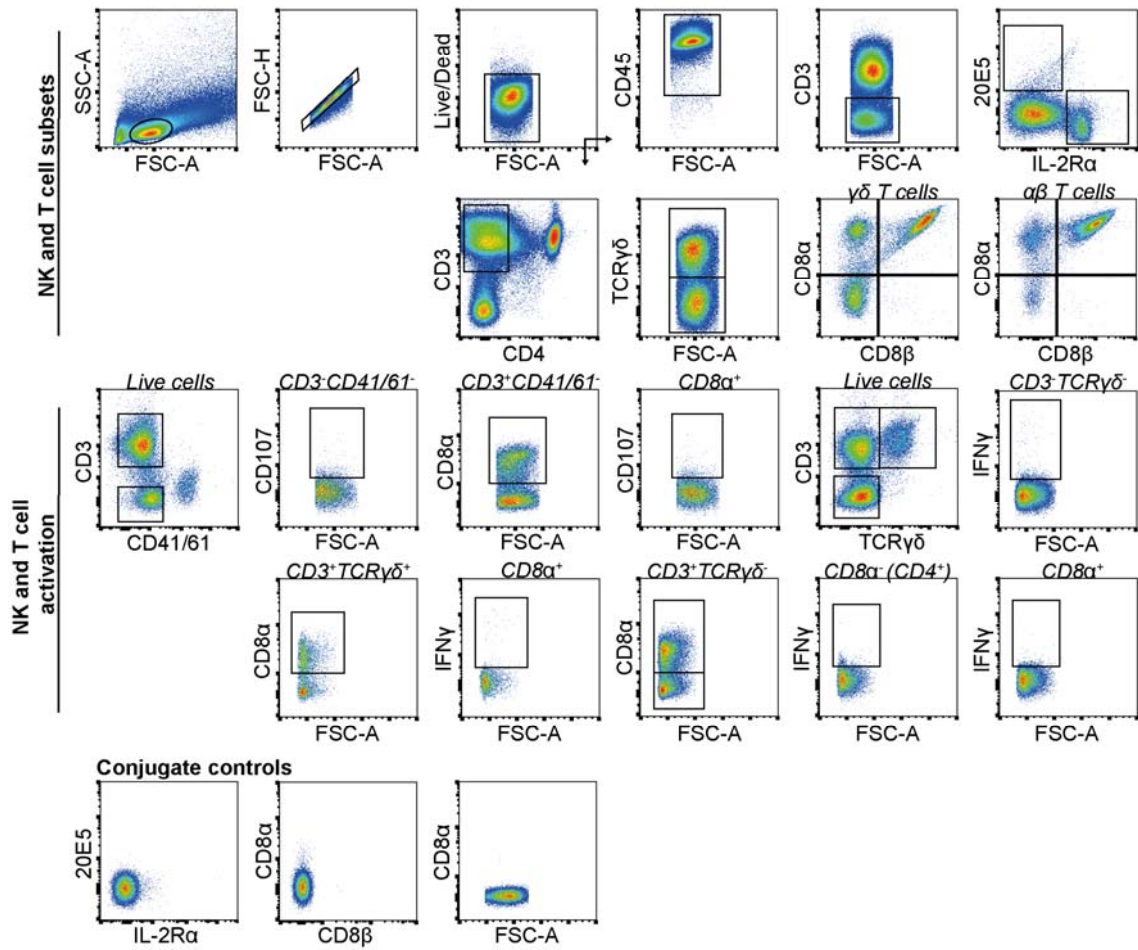


Ileum - IELs



Spleen



Additional file 1. Gating strategy of IELs and splenic lymphocytes in broiler chickens.

Gating strategy included consecutive selection for lymphocytes (FSC-A vs SSC-A), singlets (FSC-A vs FSC-H) and viable cells (Live/Dead marker-negative) followed by selection of NK and T cell subsets in ileum and spleen. Furthermore, activation of NK and T cells was analyzed by surface expression of CD107 and intracellular expression of IFN γ . Conjugate controls are shown for IELs and splenic lymphocytes.