



### 3 Context

Figure 3.1: Aerial image of the industrial Silverton context (adapted from Google Earth July 2021) 43  
© University of Pretoria



Figure 3.2: Current industrial development of Silverton (adapted from Google Earth July 2021) 44  
© University of Pretoria

## Current Industrialisation in Silverton

Analysing the current context of Silverton (Figure 3.2) reveals three areas that exclude nature and natural systems and negatively affect the industrial Silverton context and the Moreleta Spruit: firstly, the spruit has been entirely excluded from the development of the Silverton context, resulting in a disconnect with its historical role as public gathering node (Figure 3.2).

Secondly, the close proximity of the Silverton cemetery and the various industries allowed leachate pollution to feed into the ground water polluting the Moreleta Spruit and other ecosystems (Figure 3.2). Lastly, as the industries developed in Silverton, the Moreleta Spruit has been slowly channelled and constricted into one belt running through Silverton, reducing ecosystemic diversity and the effectiveness of the river (Figure 3.2).

Globally a trend developed from the first Industrial Revolution that saw the emphasis placed on industrial development at the cost of the natural environment and public engagement. This is defined as non-regenerative thinking as it attempts to place human development outside natural environments and systems.

This is contrasted with the initial stages of industrial development in Pretoria focussing on supporting and processing the surrounding agricultural landscape. However, as economic pressures grew, Pretoria disconnected from the historical role of a node in a landscape and also emphasised industrial development over natural systems and environments (Figure 3.3). With Silverton, a similar trend is identified where the industrial developments initially served the surrounding agricultural activities but with the development of technology and economic pressures, disconnected and excluded natural systems and environments (Figure 3.3).

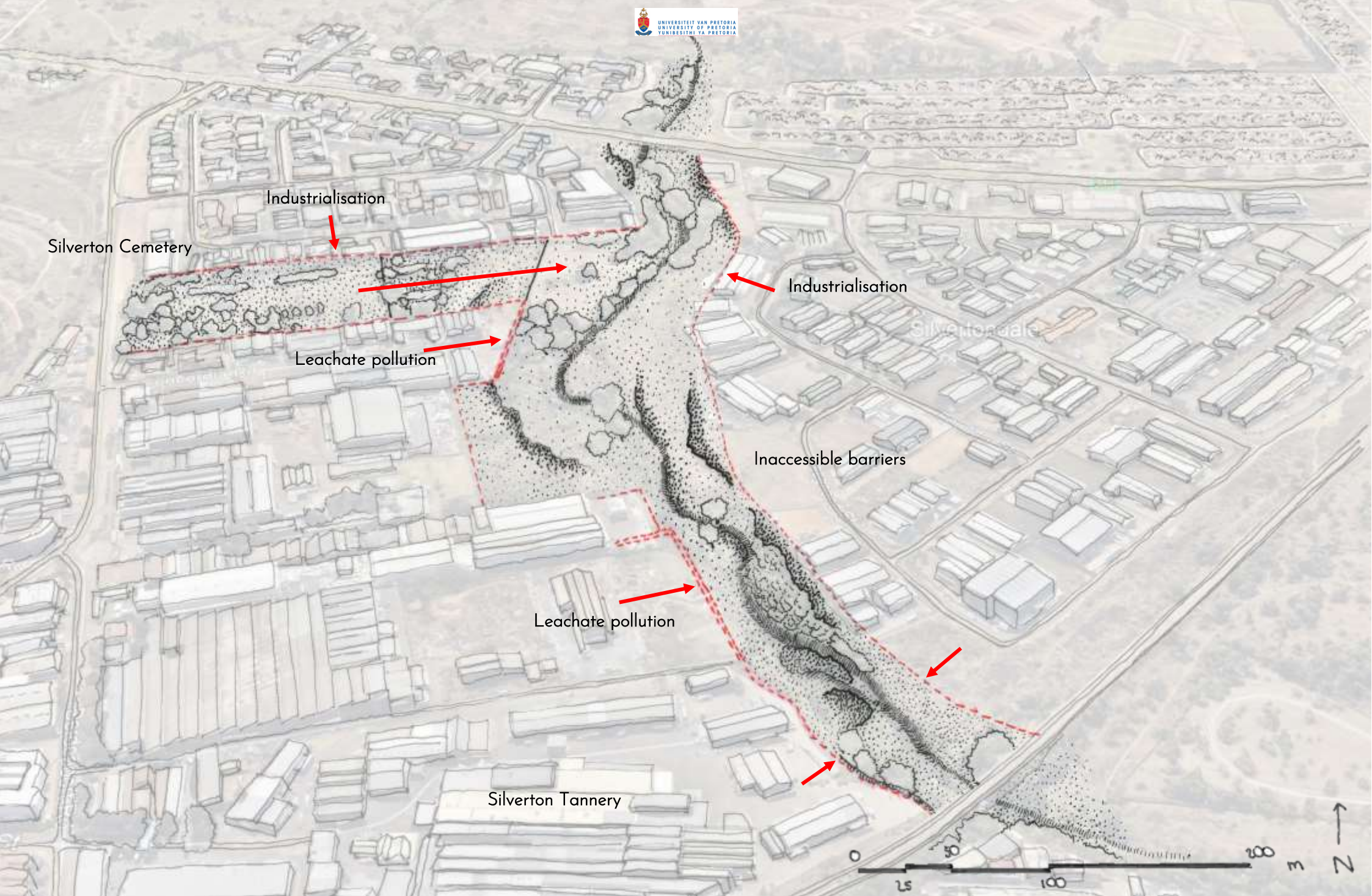


Figure 3.3: Current negative condition of the Moreleta Spruit (adapted from Google Earth July 2021)

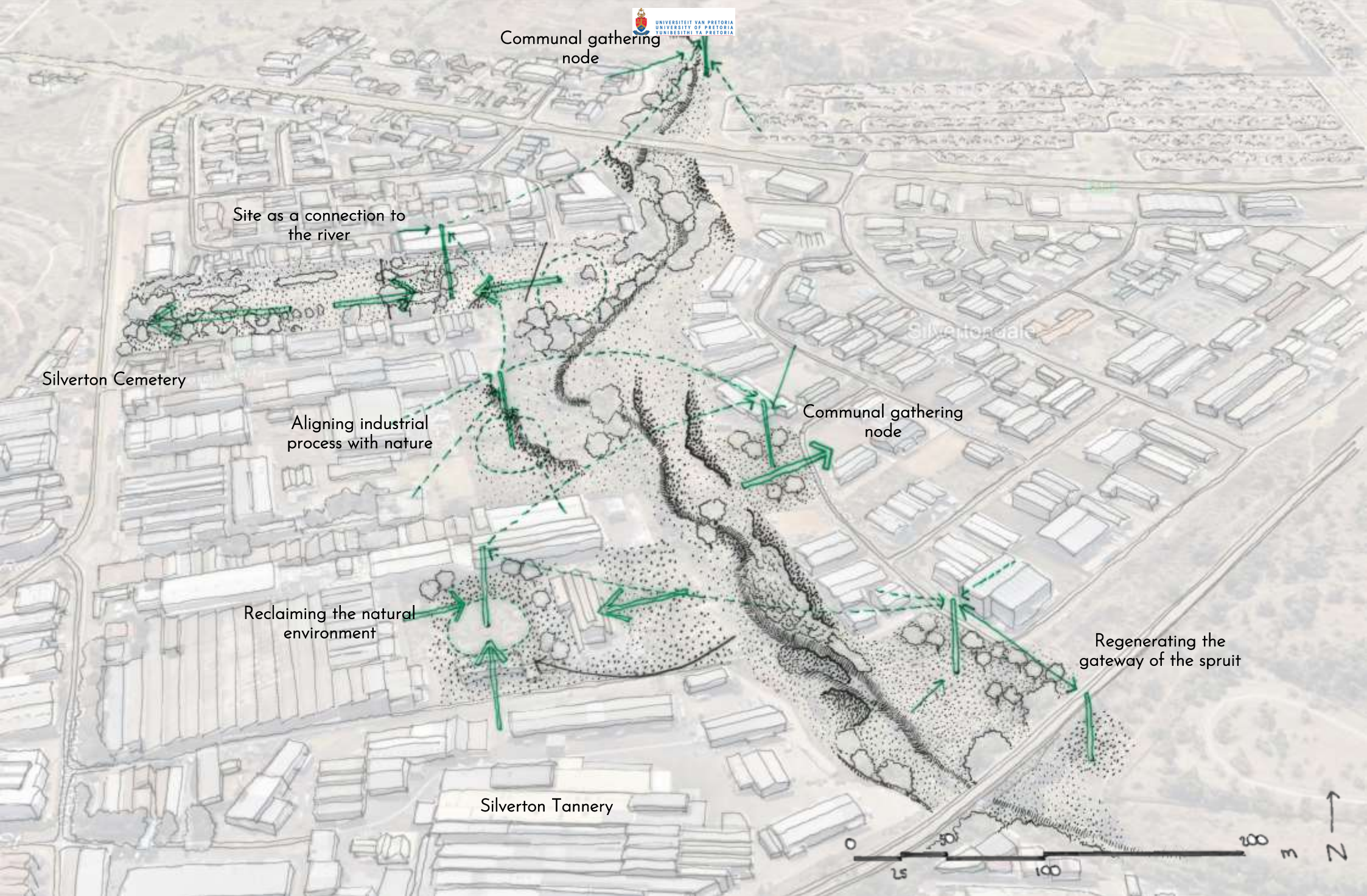


Figure 3.4: The urban vision attempting to change the Silverton context to align to nature (adapted from Google Earth July 2021) 47

## Urban Vision

As a response to the current non-regenerative thinking prevailing in Silverton, a gradual regenerative urban vision was developed, aiming to manifest the developed theoretical framework into the urban fabric.

Analysing the currently inaccessible and excluded Moreleta Spruit, the first stage of the urban vision was the identification of possible nodes, reintroducing the historical identity of the spruit as a public gathering space. Secondly, the alignment between the surrounding industrial developments and the natural systems found at the Moreleta Spruit are encouraged by allowing the spruit and the associated natural systems to permeate into the industrial context of Silverton.

Lastly, it is important to note that the regenerative urban vision is modelled around a gradual process of changing and aligning natural systems with the industrial processes driving industrial development. With the initial intervention at the Silverton Cemetery, a catalytic process will drive change to other sites along the spruit, further exploring methods and mediation strategies between nature and industry.

## Site Choice

The chosen site for this architectural intervention is the Silverton Cemetery, nestled in-between the industrial context of Silverton. The Silverton Cemetery is one of the few sites in Silverton that has been untouched and excluded from the changing industrial context, mainly due to the function of the Silverton Cemetery not allowing it to be industrialised or relocated, as well as being the only public space in the area with a connection to the protected natural systems of the Moreleta Spruit. As such, the Silverton Cemetery is a site of juxtapositions between nature and industry, where the points of confluence between nature and industry have not yet been developed or investigated.

Reviewing the theoretical framework, the site can possibly be developed into a mediating site between nature and industry, potentially changing the way industrialisation has occurred in Silverton to include natural processes within industrial processes.



Figure 3.5: Perspective showing the Silverton Cemetery as the chosen site (adapted from Google Earth July 2021)

## Site Analysis

The chosen site for this project is a strip nestled in between industrial factories and warehouses, penetrating into the industrial fabric of Silverton, connecting the Derdepoort Road to the west with the Moreleta Spruit in the east.



Figure 3.6: Photographs of the site (Author July 2021)



The site is divided into three main areas: the Silverton Cemetery to the west, the Silverton Parks Management (SPM) and the currently inaccessible undeveloped land towards the Moreleta Spruit. Due to the nature of the private industries and warehouses surrounding the site, it has become isolated and excluded from Silverton. This is evident in the site remaining programmatically and functionally unchanged throughout the course of Silverton's development. Furthermore, the distinction between the natural systems presents in the cemetery, and the rest of the site, with the surrounding industries and warehouses has created a missing liminal condition that can act as a mediator between the two conditions.

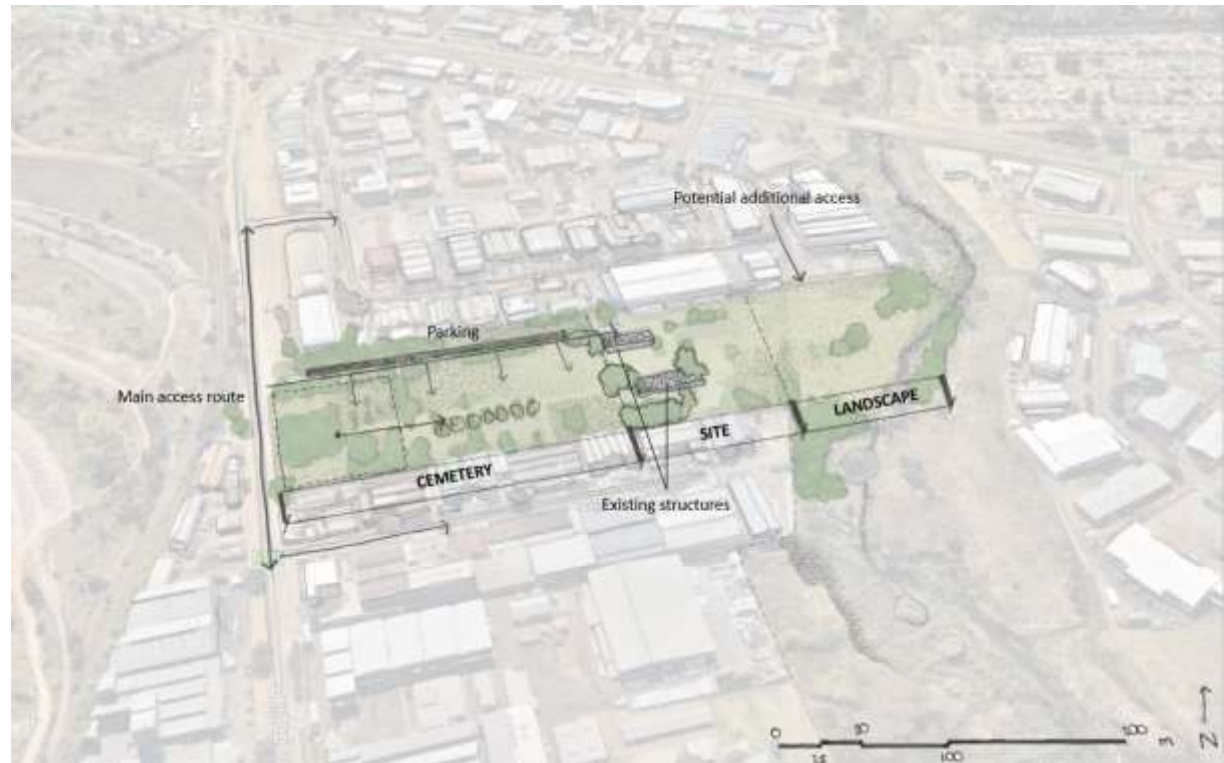


Figure 3.7: Perspective showing the site analysis (adapted from Google Earth July 2021)

Some of the issues that the site face, is the leachate pollution that the cemetery produces as well as the pollution generated from the surrounding industries. The river is also polluted and should be further investigated.

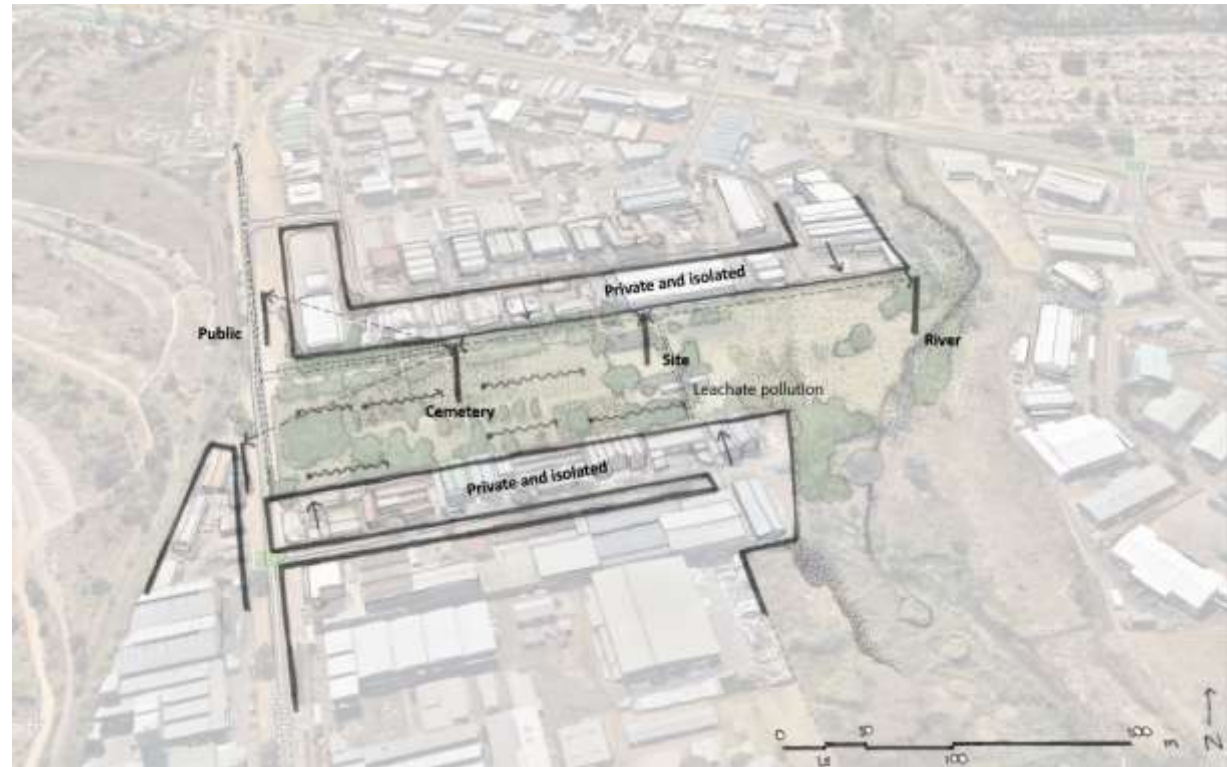


Figure 3.8: Perspective showing the isolation and access of the site (adapted from Google Earth July 2021)

The intention with the site is to firstly realign human developmental processes with that of natural processes. Secondly, to restore a connection to the river through the site for the public to utilise. Lastly, the intervention is to act as a catalyst for the rest of the Silverton context.

For the Silverton Cemetery to be re-introduced into the industrial context, the mono-programmatic nature of the cemetery has to be changed to that of a flexible, synergistic and multi-programmatic intervention that aims to work with the allows future changes in the industrial context of Silverton to be .

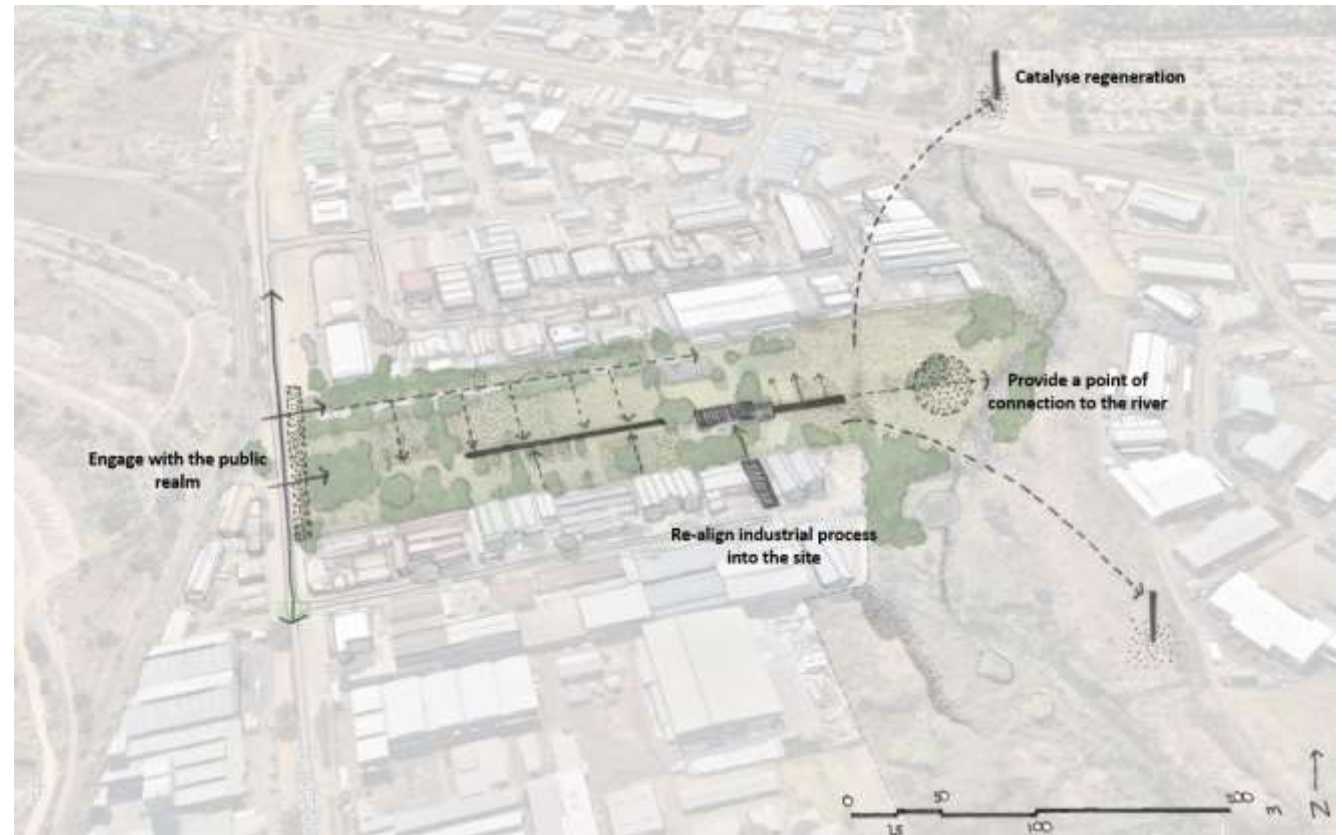


Figure 3.9: Perspective showing the intentions with the site (adapted from Google Earth July 2021)



CEMETERY ROAD

EXISTING STRUCTURE

COMPOSTING PROCESS

SQUARE

TREE NURSERY

EXISTING STRUCTURE

PAUSE SPACE

PROMINENT LINE OF TREES

OLDEST GRAVES

CHILDREN'S GRAVES