





# *Pedestrian approach*



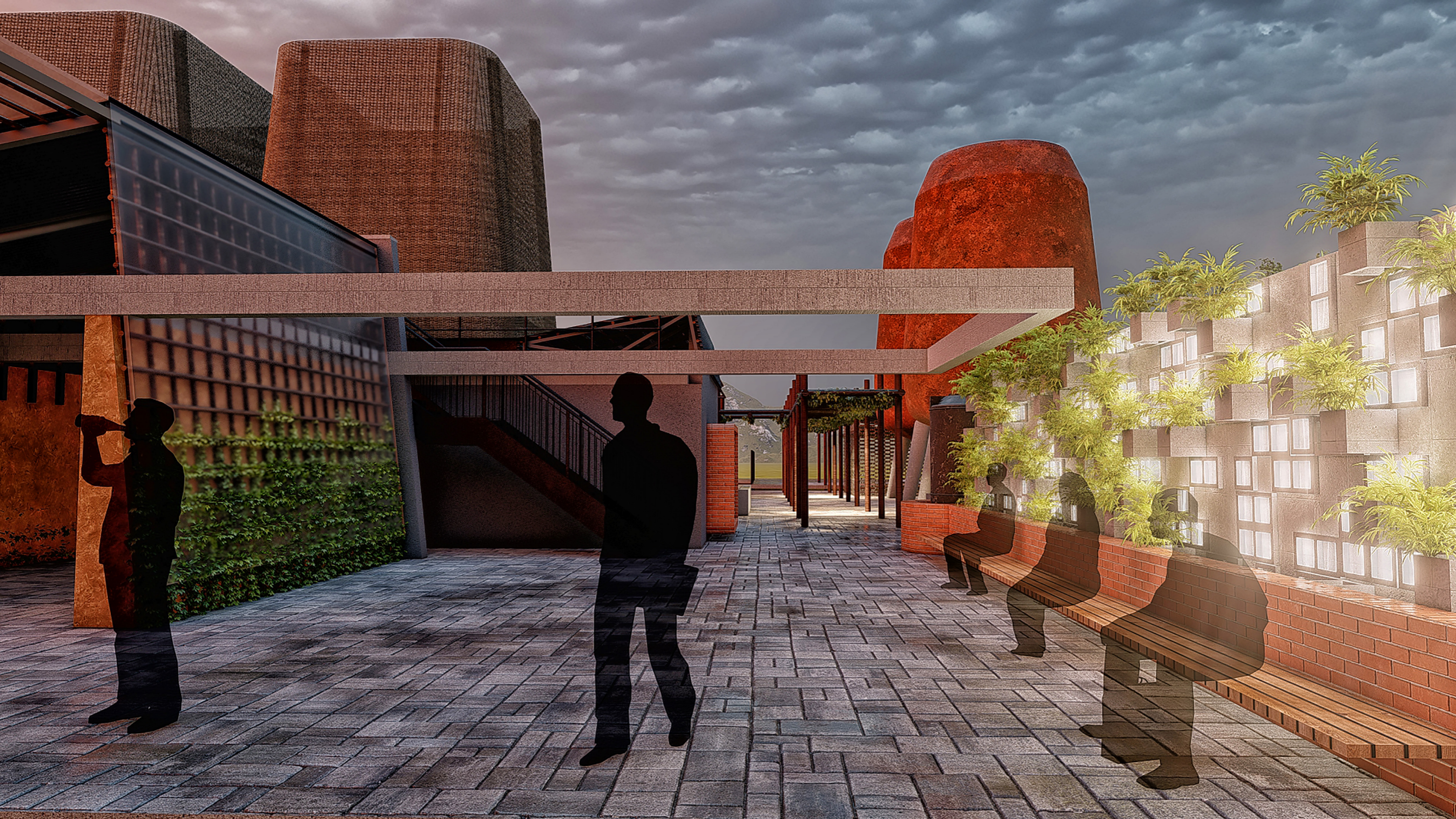
# *Informal space*



# Market Stalls



## *Pedestrian entrance 2*



# Public Interface





# *Delivery yard*







# *Agrarian*



# Granary Silo





# *Water reservoir*





# *Light infrastructure*





# *Agrarian*



# Physical Model



Faculty of Engineering,  
Built Environment and  
Information Technology

Fakulteit Ingenieurswese, Bou-omgewing en  
Inligtingtegnologie / Lefapha la Boetšenere,  
Tikologo ya Kago le Theknolotši ya Tshedimošo

9 June 2021

Reference number: EBIT/79/2021

Ms A van Aswegen  
Department: Architecture  
University of Pretoria  
Pretoria  
0083

Dear Ms A van Aswegen

## FACULTY COMMITTEE FOR RESEARCH ETHICS AND INTEGRITY

Your recent application to the EBIT Research Ethics Committee refers.

Conditional approval is granted.

This means that the research project entitled "Masters Professional Mini-Dissertation in Architecture, Landscape Architecture and Interior Architecture (Group / Blanket)" is approved under the strict conditions indicated below. If these conditions are not met, approval is withdrawn automatically.

### Conditions for approval

This application is approved based on the summaries provided. Applications from each student (including application forms and all necessary supporting documents such as questionnaire/interview questions, permission letters, informed consent form, etc) will need to be checked internally by the course coordinator/ supervisor. A checklist will need to be signed off after the checking. All of the above will need to be archived in the department and at the end of the course a flash disc / CD clearly marked with the course code and the protocol number of this application will be required to be provided to EBIT REC administrator.

No data to be collected without first obtaining permission letters. The permission letter from the organisation(s) must be signed by an authorized person and the name of the organisation(s) cannot be disclosed without consent. Where students want to collect demographic the necessary motivation is in place.

This approval does not imply that the researcher, student or lecturer is relieved of any accountability in terms of the Code of Ethics for Scholarly Activities of the University of Pretoria, or the Policy and Procedures for Responsible Research of the University of Pretoria. These documents are available on the website of the EBIT Ethics Committee.

If action is taken beyond the approved application, approval is withdrawn automatically.

According to the regulations, any relevant problem arising from the study or research methodology as well as any amendments or changes, must be brought to the attention of the EBIT Research Ethics Office.

The Committee must be notified on completion of the project.

The Committee wishes you every success with the research project.

**Prof K.-Y. Chan**

Chair: Faculty Committee for Research Ethics and Integrity  
FACULTY OF ENGINEERING, BUILT ENVIRONMENT AND INFORMATION TECHNOLOGY

## REFERENCE LIST

African Financials. 2020. Royal Eswatini Sugar Corporation Limited. [Online]. Available at: <https://africanfinancials.com/company/sz-rssc/> [Accessed: 13/05/2021]

Aghaei, P. 2020. 'Production and Reproduction of Space in the Second Cycle of Capital Accumulation; A Critique of Everyday Life in Lived Space'. *Bagh-I-Nazar*, 16(80), pp. 33-48. DOI: 10.22034/bagh.2019.151034.3799

Aleksandra, P. 2021. 'Stormwater as an Alternative Water Source: Quality Changes with Rainfall Duration and Implications for Treatment Approaches'. *International Journal of Conservation Science*, 12, pp. 713-730.

Alofsin, A. 2017. 'The Guggenheim: Frank Lloyd Wright's Iconoclastic Masterpiece'. *Journal of the Society of Architectural Historians*, 89(2), pp. 225-227. DOI: 10.1525/jsah.2021.80.2.225

Alrashed, F., Asif, M., & Burek, S. 2017. 'The Role of Vernacular Construction Techniques and Materials for Developing Zero-energy Homes in Various Desert Climates'. *Buildings: An Open Access Journal for the Built Environment*, 7(1), pp. 1-19. DOI: 10.3390/buildings7010017

Anderson, K. 2010. 'Globalization's Effects on World Agricultural Trade, 1960-2050'. *Philosophical Transactions of the Royal Society B: Biological Sciences*, 365(1554), pp. 3007-3021. DOI: 10.1098/rstb.2010.0131

ArchiDatum. 2021. 'Nike Football Training Centre Soweto / RUF Project + Nike Global Football'. [Online]. *Contemporary African Arabic Architecture*. Available at: <http://www.archidatum.com/projects/nike-football-training-centre-soweto-ruf-project-plus-nike-global-football/> [Accessed: 03/08/2021]

Baker, M., & Dradri, S. 2006. *Food Aid, Food Production and Food*. Lusaka: Southern Africa Regional Bureau.

Belachew, A. 2020. *Mozambique: Conflict Insight*. Addis Ababa: Institute for Peace and Security Studies.

Bennett, K. 2014. 'Beautiful Landscapes in Drag, the Material Performance of Hypernature'. *Journal of Landscape Architecture*, 9(3), pp. 42-53. DOI 10.1080/18626033.2015.968416

Berke, P. R. 2008. 'The Evolution of Green Community Planning, Scholarship, and Practice: An Introduction to the Special Issue'. *Journal of the American Planning Association*, 74(4), pp. 303-407. DOI: 10.1080/01944360802381751

Blandau, R. 2017. *The Borgen Project*. [Online]. Available at: <https://borgenproject.org/about-swaziland-refugees/> [Accessed: 16/05/2021]

Brown, R., & Maudlin, D. 2012. 'Concepts of Vernacular Architecture'. In C. G. Crysler, S. Cairns, & H. Heynen (Eds.), *The Sage Handbook of Architectural Theory* (pp. 340-355). Thousand Oaks, CA: Sage.

Campbell, T. 2007. 'Smart Cities: Curitiba'. *Urban Land*, 66(4), pp. 68-73.

Cheng, E., & Sun, Y. 2015. 'Israeli Kibbutz: A Successful Example of Collective Economy'. *World Review of Political Economy*, 6(2), pp. 160-175. DOI: 10.13169/worldrevipolicon.6.2.0160

Chong, E. 2017. 'Examining the Negative Impact of Gentrification'. [Online]. *Georgetown Journal on Poverty Law & Policy*. Available at: <https://www.law.georgetown.edu/poverty-journal/blog/examining-the-negative-impacts-of-gentrification/> [Accessed: 13/05/2021]

City of Johannesburg. 2018. *City of Johannesburg Land Use Scheme*. [Online]. Available at: [https://www.joburg.org.za/documents\\_/Documents/City%20of%20Johannesburg%20Land%20Use%20Scheme%20-%20FINAL%202018.pdf](https://www.joburg.org.za/documents_/Documents/City%20of%20Johannesburg%20Land%20Use%20Scheme%20-%20FINAL%202018.pdf) [Accessed 2/11/2021]

Clifford, P. 2021. 'Natural Selection'. *Architectural Records*, 209(4), pp. 58-63.

Corner, J. 2014. *The Landscape Imagination: Collected Essays of James Corner 1990-2010*. New York, NY: Princeton Architectural Press.

Coughenour, C. M. & Swanson, L. E. 1988. 'Rewards, Values, and Satisfaction with Farm Work'. *Farm Life: Structural and Subjective Factors*, 53(4), p. 442.

Crafford, N. 2021. *Zulu Sun Lodge*. [Art]. Pretoria: Crafford & Crafford.

Creswell, D. 2017. *Research Design: Qualitative, Quantitative and Mixed Methods (5th ed.)*. Thousand Oaks, CA: Sage.

CS Studio Architects. 1998. *Gugulethu Central Meat Market*. [Online]. Available at: <https://csstudio.co.za/PDF/Gugulethu.pdf> [Accessed: 08/10/2021]

de la Salle, J. M. H. 2014. 'Agricultural Urbanism'. *Journal of Planning Education and Research*, 34(2), pp. 237-250.

Debly, T. 2014. 'Culture and Residence in Eswatini'. *Journal of Contemporary African Studies*, 32(3), pp. 284-301.

Design Indaba. 2021. *Luyanda Mpahlwa + Mokena Makeka*. [Online]. Available at: <https://www.designindaba.com/articles/interviews/luyanda-mpahlwa-mokena-makeka> [Accessed: 13/08/2021]

Dizikes, P. 2020. *The Urban Job Escalator Has Stopped Moving*. Cambridge, MA: Massachusetts Institute of Technology.

Dlamini, H. 2013. *Commission on Population and Development*. New York, NY: United Nations Headquarters.

Dlamini, M. 2021a. 'Eswatini Unrest: Pro-democracy MPs, Political Parties to Form an Interim Government'. [Online]. *Swaziland News*. Available at: <https://www.swazilandnews.co.za/fundza.php?nguyiphi=1638> [Accessed: 18/10/2021]

Dlamini, M. 2021b. 'Malindza Umphakatsi Burnt in the Midst of Political Crisis'. [Online]. Swa-

ziland News. Available at: <https://www.swazilandnews.co.za/fundza.php?nguyiphi=1388> [Accessed: 28/07/2021]

Dlamini, W. 2017. 'Sikhuphe Residents Demand E80M Compensation'. [Online]. Times of Swaziland. Available at: <http://www.times.co.sz/news/115137-sikhuphe-residents-demand-e80m-compensation.html> [Accessed: 10/11/2021]

Dlamini, W. 2018. 'Malindza-Siteki Waste Survey Report'. [Online]. UNITAR. Available at: [https://stopopenburning.unitar.org/site/assets/files/1089/eswatini\\_siteki\\_municipality\\_final\\_report\\_on\\_baseline\\_study-\\_aug2018.pdf](https://stopopenburning.unitar.org/site/assets/files/1089/eswatini_siteki_municipality_final_report_on_baseline_study-_aug2018.pdf) [Accessed: 10/11/2021]

Duany, A., Plater-Zyberk, E., & Speck, J. 2000. *Suburban Nation: The Rise of Sprawl and the Decline of the American Dream* (2nd ed.). New York, NY: North Point Press.

Eslamian, S. 2021. *Handbook of Water Harvesting and Conservation: Basic Concepts and Fundamentals*. West Sussex: John Wiley & Sons.

Eswatini Civil Aviation Authority. 2010. [Online]. Available at: <https://www.eswacaa.co.sz/category/publications/> [Accessed: 15/04/2021]

Farr, D. 2018. *Sustainable Nation: Urban Design Patterns for the Future* (1st ed.). Hoboken, NJ: John Wiley & Sons.

Folkers, A. S., & van Buiten, B. A. C. 2010. *Modern Architecture in Africa: Practical Encounters with Intricate African Modernity* (2nd ed.). Switzerland: SUN Publishers.

Food and Agriculture Organization. 2004. *Architectural Marketing Project: Bankable Investment Project Profile*. Midrand: NEPAD.

Freear, A., Miraftab, F., & Okolichany, T. 2021. 'Small Town Urbanism in the 21st Century'. [Online Video]. Harvard University Graduate School of Design. Available at: <https://www.gsd.harvard.edu/event/small-town-urbanism-in-the-21st-century-andrew-freear-faranak-miraftab-and-todd-okolichany/> [Accessed: 2/11/2021]

Freilich, R. H., Sitowski, R. J., & Mennillo, S. D. 2010. *From Sprawl to Sustainability: Smart Growth, New Urbanism, Green Development, and Renewable Energy*. Monaco: ABA Publishing.

Frescura, F. 1980. 'The Development of Rural Vernacular Architecture in Southern Africa' (PhD Thesis, University of Witwatersrand, Johannesburg).

Gehl, J. 2010. *Cities for People*. Washington, DC: Island Press.

Gerin, M. 2008. 'Products'. *Architects Journal*, 19, pp. 113.

Goodwin, D. 2021. 'A Bright Future for Africa'. [Online]. ArchDaily. Available at: [https://www.archdaily.com/603169/7-architects-designing-a-diverse-future-in-africa?ad\\_medium=gallery](https://www.archdaily.com/603169/7-architects-designing-a-diverse-future-in-africa?ad_medium=gallery) [Accessed: 13/08/2021]

Government of Eswatini. 2020. 'Tinkhundla Administration'. [Online]. Ministry of Tinkhundla

Administration & Development. Available at: <http://www.gov.sz/index.php/ministries-departments/ministry-of-tinkhundla-administration/tinkhundla-administration> [Accessed: 16/05/2021]

Government. 2021. Ministry of Tinkhundla Administration & Development. [Online]. Available at: <http://www.gov.sz/index.php/ministries-departments/ministry-of-tinkhundla-administration/tinkhundla-administration>. [Accessed: 05/10/2021]

Grace, M. 2019. 'Who is Afraid of Public Space? Public Art in a Contested, Secured, and Surveilled City'. *Art & the Public Sphere*, 8(2), pp. 235-254. DOI: 10.1386/aps\_00023\_1

Gray, J. 2018. 'Reading Broadacre'. [Online]. Frank Lloyd Wright Foundation. Available at: <https://franklloydwright.org/reading-broadacre/> [Accessed: 12/05/2021]

Green, J. 2021. 'Interview with Michael van Valkenburgh'. [Online]. American Society of Landscape Architects. Available at: <https://www.asla.org/ContentDetail.aspx?id=29648> [Accessed: 30/07/2021]

Grima, D. 2014. 'Country Review: Swaziland'. [Online]. Food and Agriculture Organization of the United Nations. Available at: <https://www.fao.org/publications/card/en/c/d4e74176-2942-4b54-82e5-ea6d7113e3cc/> [Accessed: 2/11/2021]

Haney, D. H. 2005. 'Leberecht Migge (1881-1935) and the Modern Garden in Germany' (PhD Thesis, University of Pennsylvania).

Harris, M. 2000. 'The Kibbutz: Uncovering the Utopian Dimension'. *Utopian Studies*, 10(1), 115-127.

Hart, J. 1995. *Rural and Farm No Longer Mean the Same: Rural People and Places*. Lawrence, KS: University Press of Kansas.

Hermann, P. 2020. 'An Exploratory Analysis of Visitor Spending at a Cultural Event in Eswatini'. *African Journal of Hospitality, Tourism and Leisure*, 9(5), pp. 1193-1204.

Jethro, D. 2013. 'An African Story of Creation: Heritage Formation at Freedom Park, South Africa'. *Material Religion*, 9(3), pp. 370-393. DOI: 10.2752/175183413X13730330869077

Kroll, L. 1999. 'Creative Curitiba'. *Architectural Review*, 205(1225), pp. 92-95.

Kumalo, S., & Zwane, S. 2021. 'Trucks Burnt, Shops Looted at Siphofaneni'. [Online]. Times of Swaziland. Available at: <http://www.times.co.sz/news/132913-trucks-burnt-shops-looted-at-siphofaneni.html> [Accessed: 28/06/2021]

Lancaster, B. 2010. *Rainwater Harvesting for Drylands and Beyond* (2nd ed.). Tucson: Rain-source Press.

Lapping, M. B. 1979. 'Toward a Social Theory of the Built Environment: Frank Lloyd Wright and Broadacre City'. *Environmental Review*, 3(3), pp. 11-23. DOI: 10.2307/3984040

Lefebvre, H. 1991. *The Production of Space*. France: John Wiley & Sons.



Lerner, J. 2012. 'Q&A with Jaime Lerner'. *Urban Land*, 66(4), pp. 73-75.

Light Infrastructure. 2020. Monsoon2020 Student Presentation: Final Review. [Online Video]. Available at: <https://www.youtube.com/watch?v=Rn7OGUU-xf8> [Accessed: 30/07/2021]

Lincoln, Y. S., Lynham, S. A., & Guba, E. G. 2011. 'Paradigmatic Controversies: Contradictions, and Emerging Confluences Revisited'. In N. K. Denzin & Y. S. Lincoln (Eds.), *The SAGE Handbook of Qualitative Research* (vol. 4, pp. 97-128). Thousand Oaks, CA: Sage.

Lynch, K. 1960. *The Image of the City*. London: Massachusetts Institute of Technology.

Magagula, G. T. 1982. *Land Tenure and Agricultural Production in Swaziland*. Luyengo: University of Swaziland.

Manyatsi, A. M., Masarirambi, M. T., & Hachigonta, S. 2020. *Southern African Agriculture and Climate Change: A Comprehensive Analysis – Swaziland*. Washington, DC: International Food Policy Institute.

Matan, A. 2018. 'People Cities: The Life and Legacy of Jan Gehl'. *Journal of Planning Education and Research*, 38(3), pp. 386-387 .

Matsapha Municipality. 2019. *Matsapha Town Planning Scheme: Development Code* (vol. 4). Matsapha: Matsapha Town Board.

Mavuso, M. S. 2015. 'Climate Change Impacts, Adaptation and Coping Strategies at Malindza, A Rural Semi-Arid Area in Swaziland'. *American Journal of Agriculture and Forestry*, 3(3), p. 86 .

McArthur, D. P., Thorsen, I., & Uboe, J. 2014. 'Employment, Transport Infrastructure, and Rural Depopulation: A New Spatial Equilibrium Model'. *Environment and Planning*, 46(7), pp. 1652-1665. DOI: 10.1068/a46120

McKeown, A. 2004. 'Global Migration 1846-1940'. *Journal of World History*, 15(2), pp. 155-189.

Ministry of Economic Planning and Development. 2019. *National Development Plan 2019/20 – 2021/22: Towards Economic Recovery*. Mbabane: Ministry of Economic Planning and Development.

Mitchell, K. 2016. 'Triple Bottom Line Cost-Benefit Analysis of Green Infrastructure in Norman, Oklahoma'. *International Journal of the Constructed Environment*, 7(4), pp. 1-15.

Nakanishi, J., Sheppard, L. & Hutton, J. 2020. 'Finding a New Commons: Architecture's Role in Cultural Sustainability for Japan's Shrinking Regions'. *DEARQ*, 26, pp. 88-99. DOI: 10.18389/dearq26.2020.10

Ndlangamandla, E. 2007. *Swaziland Human Development Report, HIV and AIDS, and Culture*. Mbabane: Coordinating Assembly of NGOs.

New Partnership for Africa's Development, *Comprehensive Africa Agricultural Develop-*

ment Programme, & Food and Agriculture Organisation of the United Nations. 2005. *Government of the Kingdom of Swaziland*. Swaziland: FOA Investment Centre Division.

Nkambule, M. E. N. 2015. 'Visual Assessment as a Research Tool for Solving Spatial Problems in Khutsong Section Informal Settlement' (PhD Thesis, University of Pretoria, Pretoria).

Orrell, O. 2020. 'Products: These Landscape Furnishings Help Designers Create Public or Private Outdoor Spaces that are More Comfortable – and Beautiful'. *Texas Architect*, 70(4), p. 23 .

Ozkazanc, S. 2017. 'Spatial Analysis of Social Exclusion from a Transportation Perspective: A Case Study of Ankara Metropolitan Area'. *Cities*, 67, pp. 74-84. DOI: 10.1016/j.cities.2017.04.013

Patelski, J. 2008. 'Achieving a Triple Bottom Line with Sustainable Design'. *Urban Land*, 67(6), pp. 125-127.

Primoz, M. 2017. 'Leading Sustainable Neighborhoods in Europe: Exploring the Key Principles and Processes'. *Urbani izziv*, 28(1), pp. 107-121.

Rebecca. 2020. 'Bright Young Thing: Revel Architecture & Design Masterfully Orchestrates Space, Light, and Connection to Site for the Austin, Texas, Headquarters of a Fledgling Start-up'. *Interior Design*, 91(15), pp. 108-115 .

Robert, F. 2013. *Megalopolis Unbound*. *Writer90*, 14(1), p. 25 .

Rosario, M. 2016. 'Curitiba Revisited: Five Decades of Transformation'. *Architectural Design*, 86(3), pp. 112-117. DOI: 10.1002/ad.2053

Rulashe, P. 2006. 'UNHCR Prepares for Swaziland to Take Over All Refugee Services'. [Online]. UNHCR. Available at: <https://www.unhcr.org/en-us/news/latest/2006/10/452a5d6e2/unhcr-prepares-swaziland-refugee-services.html> [Accessed: 16/05/2021]

Sefaira. 2020. Masters Project. [Online]. Available at: <https://apps-prod.prod-env.habitat.sketchup.com/page/project/324541> [Accessed: 07/10/2021]

Shiva, V., Bhatt, V., Panigrahi, A., Mishra, K., Tarafdar, D., & Singh, V. 2017. *Seeds of Hope, Seeds of Resilience*. New Delhi: Navdanya/RFSTE.

Simelane, H., & Sihlongonyane, M. F. 2021. 'A Comparative Analysis of the Influence of Traditional Authority in Urban Development in South Africa and Eswatini'. *African Studies*, 80(2), pp. 153-171. DOI: 10.1080/00020184.2021.1932417

Simelane, M. 2011. 'Another House For E2 Million Mansion Chief'. [Online]. *Times of Swaziland*. Available at: <http://www.times.co.sz/News/67135.html> [Accessed: 08/11/2021]

Singh, M., Sinha, A., & Singh, P. 2014. 'Maintaining the Biodiversity of Informal Protected Areas: A Collaborative Conservation Approach'. *International Journal of Conservation Science*, 5(1), pp. 107-116.

Smith, B. 2014. Sustainable Development in Brazil. [Online Video]. Available at: <https://www.youtube.com/watch?v=r4sumpEqnLY> [Accessed: 16/07/2021]

Smith, M. E. 2014. 'Peasant Mobility, Local Migration and Premodern Urbanization'. *World Archaeology*, 46(4), pp. 516-533. DOI: 10.1080/00438243.2014.931818

Smith, R. T. 2014. Sustainable Development in Brazil? [Online Video]. Available at: <https://www.youtube.com/watch?v=r4sumpEqnLY> [Accessed: 16/07/2021]

Sone, E. 2010. 'Aesthetics from the Swazi Perspective: The Case of the Swazi Umhlanga/ Reed Dance'. *Muziki*, 7(1), pp. 130-139. DOI: 10.1080/18125980.2010.484586

South African National Bureau of Standards. 2011. Code of Practice for the Application of the National Building Regulations. Pretoria: SANBS.

Swilling, M. & Annecke, E. 2006. 'Building Sustainable Neighborhoods in South Africa: Learning from Lynedoch Case'. *Environment & Urbanization*, 18(2), pp. 315-332. DOI: 10.1177/0956247806069606

Systems Innovation. 2019. Sustainability – Full Documentary. [Online Video]. Available at: <https://www.youtube.com/watch?v=bjrPilem30g> [Accessed: 12/05/2021]

Talen, E. 2015. New Urbanism 101: The History of Planning. [Online Video]. Available at: <https://www.youtube.com/watch?v=YhVSrCWvR4k> [Accessed: 13/05/2021]

Thatchers Association of South Africa. 2016. A Guide to Thatch Construction in South Africa. [Online]. Available at: <http://www.sa-thatchers.co.za/wp-content/uploads/2016/04/GUIDE-TO-THATCH-CONSTRUCTION-IN-SOUTH-AFRICA1.pdf> [Accessed: 10/11/2021]

Torry, J. 2016. Swaziland Agricultural Economic Fact Sheet. Pretoria: United States Department of Agriculture.

United Nations International Children's Emergency Fund. 2005. Eswatini: Govt Gears up to Tackle Waste Crises. [Online]. Available at: <https://reliefweb.int/report/swaziland/swaziland-govt-gears-tackle-water-crisis> [Accessed: 07/08/2021]

United Nations. 2018. Department of Economic and Social Affairs. [Online]. Available at: [www.un.org/development/desa/en/news/population/2018-revision-of-world-urbanization-prospects](http://www.un.org/development/desa/en/news/population/2018-revision-of-world-urbanization-prospects) [Accessed: 13/05/2021]

United Nations. 2018. World Urbanization Prospects. New York, NY: Population Division.

United States Environmental Protection Agency. 2011. Land Revitalization Fact Sheet Urban Agriculture. [Online]. Available at: <https://nepis.epa.gov/Exe/ZyNET.exe/P100AL3D.TXT?ZyActionD=ZyDocument&Client=EPA&Index=2011+Thru+2015&Docs=&Query=&Time=&EndTime=&SearchMethod=1&TocRestrict=n&Toc=&TocEntry=&QField=&QFieldYear=&QFieldMonth=&QFieldDay=&IntQFieldOp=0&ExtQFieldOp=0&XmlQuery=> [Accessed: 17/05/2021]

Viljoen, A. 2005. Continuous Productive Urban Landscapes: Designing Urban Agriculture for

Sustainable Cities. Oxford: Architectural Press.

Williams, G., & Thampi, B. V. 2013. 'Decentralisation and the Changing Geographies of Political Marginalisation in Kerala'. *Environment and Planning A: Economy and Space*, 45(6), pp. 1337-1357. DOI: 10.1068/a45218

Wise, N. 2016. 'Outlining Triple Bottom Line Contexts in Urban Tourism Regeneration'. *Cities*, 53, pp. 30-34. DOI: 10.1016/j.cities.2016.01.003

World Bank. 2019. The Future of the Rural Space. [Online Video]. Available at: <https://live.worldbank.org/future-rural-space> [Accessed: 15/05/2021]

World Bank. 2021. The World Bank in Eswatini. [Online]. Available at: <https://www.worldbank.org/en/country/eswatini> [Accessed: 16/07/2021]

Yinnon, A. M., Matalon, A., Goldman, S., & Antonovsky, A. 2007. 'Medicine and Health Care in the Israeli Kibbutz: A Survey of Physicians'. *Health & Social Care in the Community*, 1(6), pp. 337-342. DOI: 10.1111/j.1365-2524.1993.tb00236.x