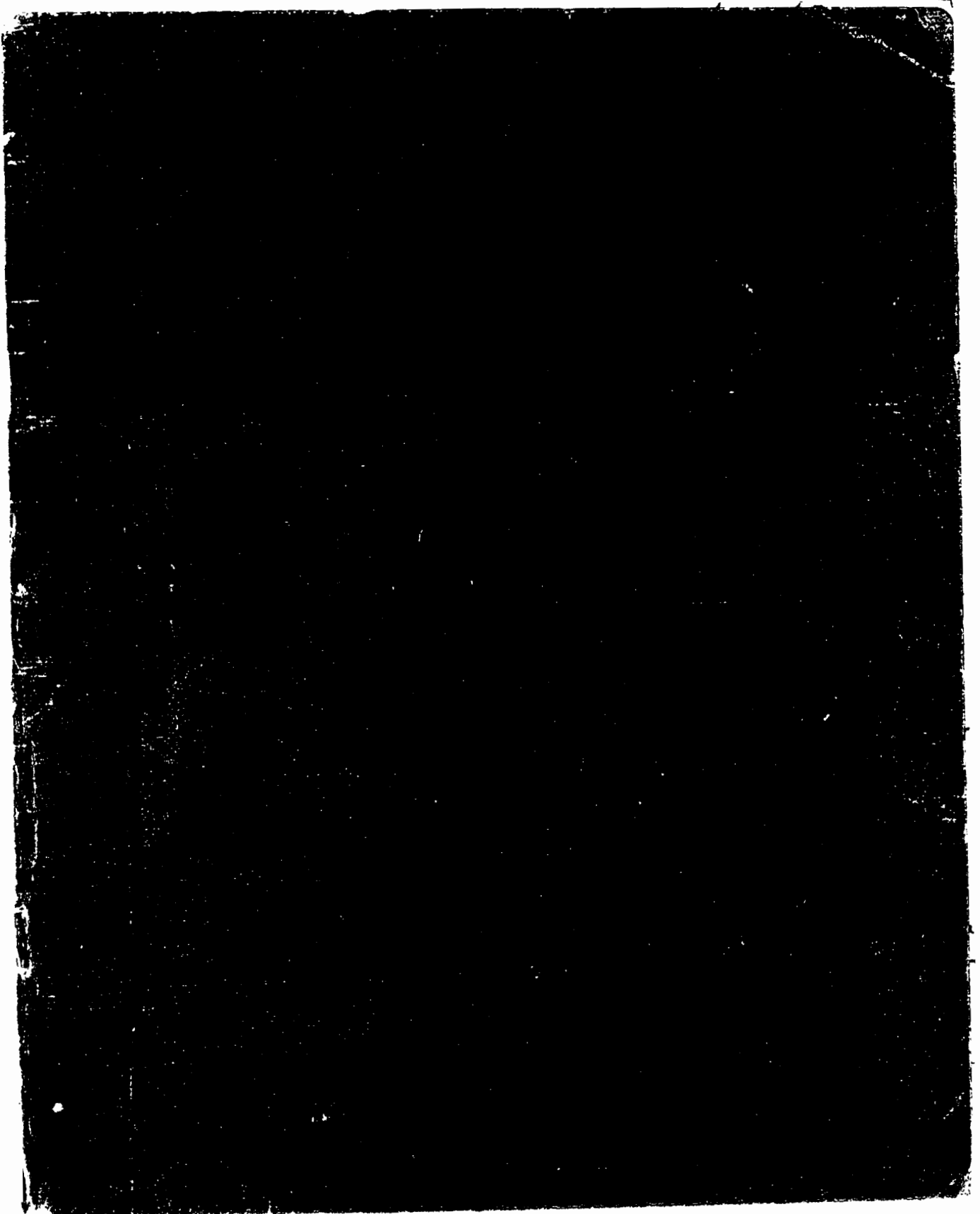


S 340^{*}
(H)

K 4415.

E Muelau

p 1-52^{*}



S.340^{*}
(H)

K 44/5.

E Mudau.

p 1-52^{*}

340 AUG 1939

indexed

P.P. 1-52

Vhadau ^{K44/5} ~~ini~~.

Thaho (Mbvo) ya Vhadau vha Tshakumo

Uho-Makhulu vha xi kale shang lino
 lo vha li la vhadambethu, na
 vhadambethu na vhadambethu. Vhadambethu
 thu namusi xi vha wana thu thung
 ya vhubva-~~u~~ha, shangoni la
 Kwa-Mutele vdi he vha ~~anda~~.
 Luambo lwacho lwo todou nga
 Lukalanga ~~vhadambethu~~ vha madombor
 hu pfi vha amba nga ~~lulambethu~~.
 Vhafi vha vha (vhadambethu) hu pfi vha
 ri u fa vha ya tomboni la Mwali kana
 la Kudwane. Kungeli hu ambiwa lwone
 lulambethu. Kathihi nga murahu ha
~~minwaha~~ Kudwane u rumela
 minwe miranzi kha vha koyo. Sa da ya
 lwadza minwe and ya mu funa kha
 vhatu bha lushaka worwwo. Uho vhatu
 zwenezwo vha a tunguza nga ~~uho vhu~~
 lwadze zwenezwo thango dzi mbo fara
 mudzimba, ndi uri do fara minwe wa
 vho faho. ~~Set~~ Thezi nangwe dzina lame
 vha si li divhese, vha do zwipfesa

musa mulwadze o' wa Mudjimu. U do vha
 vhudza uri u bova nga fhi na'hore
 ndi iwana ~~wa~~ wannji na uri ndi ene nnyi.
 Dzithhele dzi a rambwa - ndi uri ku rambwa
 vhasadi vha mukunda wawo uri ula de
 u phalala kha mukhomo uyo wa u liza ^{telele} na
 u ~~bovumelala~~ - Zwi ralo ~~u~~ ^{bovumelala} ~~u~~ ^{hothe} uswika
 mudjini u tshi wa, a amba he a bva na
 uri ndi ene nnyi nahore ndi ~~wa~~ iwana wa
 nnyi na ~~chale~~ thavha ya hawe ndi i fhis.
 Waphungo na mikhuwa ya avha
 vlathe vha no ffi vha lembethu ri do
~~vha~~ ^{zwi} hitsha, ra ~~thoma~~ ~~zwi~~ hanelana
 a vhanwe vha vanda vha kale vhe vha
~~gula~~ ^{zwi} ~~zwi~~ ^{muno} muni ila mukhomo wa ka -
~~tekhila~~ ^{zwi} Thohoyandou u sa the da shu zula kaka
 Mutupo wa vha lembethu na namusi
 yffi ndi ~~Nzhelele~~ "Nzhelele", ine ^{zwi} ~~zwi~~
 vha misalalino ra ri ndi kuvhimbisa.
 Ndi tshinori tshel ~~zwi~~ ^{tsha} vha tshi tshi wanala
 mulambori wa Nzhelele. Zwi niori izwo
 zwo vha zwo daza mu ~~zwi~~ wothel.
 Vhathe vha vha vhusa ~~zwi~~ shango leno

Madjimbé-Nonobe

Vha di-rine mutupo ~~wa~~ ^{nga} zwenozwo zimoni
 vha ri: "Ri vha nzhelile, ti ana nga
~~wa~~ nzhelile.

Vhambedi vhone vho ^{vho vho'} dzula shangoni ^{la}
 no pfi vhumbedi thungo ya vhubva d'vha,
 Ndi kha la Ha Luwimbi, Makonde, Mata
 ngani, ~~na~~ u wela seli ha Luwuvhu u isa
 dzithohani za Madzimba ^{Rombe} Ngonbe seli ha Tabha.
 Vho tshiflinga ndi ziila kale shango
 li tsee ho vhiha nga madaka a
 miri mihulu; ziila dzimbula dzi tsee mzihi
 na milambo ~~zwo~~ ^{zwo} vha madi manghi.

Vhambedi na vhadembetshu vho vha
 vhe na vhutali; ~~nga~~ vha vha. Vho divha u
 ita magungwa a u tala ntha ha milambo
 iyo mihulu, ^{zwo} zwi tshi tou vha na vha vha vha

Vhadzonga vhone mutupo wawo vdi
 "Ndan vha di vhidza nga uri ri: "Vhadan"
 Vho valo nge vha vha dhoni mahosi ma-
 hulu a shango la Venda. Vha ri: rine
 a ri ili tshithu ji mahosi, ri la zwothe
 nga mda ha Klovhe i ve nowa.
 Ho vha hu na dzikhosi mzihi

I Uha-Twanamba ndi vhaime vlathe
 vhe vha ^{flame} da vha tli boa Bevhula
 kale-kale flanda ha Uha-Senzi, Khosi
^{yawho}
~~jabwe~~ ndi musi e Tshivhula. Uhanime
 vlathe vha ri Uha-Twanamba ndi
 Uha-Ngona vhanime vha ri ndi
 Uha-Senzi. Tshini' ra divha ndi
 mi avha vlathe hu na vha Dan na
 vha Mbedzi ^{na Lea} ~~na Lea~~ vha Lea khavho.
 Namusi vha wanala mulondoni wamuno
 hengenzi ha Tshivhula.

de dra vha dzi tshi vhusa shango;
 ttha ha idya sa khosi ho vha hu
 na klosi phulu ye vha ya vha
 i tshi pfi ~~khosi~~ ^{Raphulu} ~~khosi~~ ^{khosi} vha ya ya
~~khosi~~ ^{Raphulu} ~~khosi~~ ^{khosi} vha o flata
 mudi wawe a hu ton di hwe swa zwanhudi;
 vha vha ri o vha o zula vha vha
 iwe vha vha ho vha ho flata Tshivhula
 vha vha Tshivhula o vha e Sunguwi
 Tshine toha vha hone ndi uri khosi
 iri Raphulu o vha e khosi ya
 vha ngona ^{khosikhulu} na hone e mudi wa
 vha vha we avha a sa funi undwa
 Tshivhula na ene o vha e khosi misi
 yene ya Raphulu. Na ene hu pfi ndi
 musini ^{mu thamba!} ~~khosi~~ ^{Tshivhula} ~~khosi~~ ^{khosi}
 vha tshi tshela tsha ya vha vha
 Mahosi ya mavhili o vha e a ^{vha vha} ~~khosi~~
 othe, ^{khosi} vha e ^{Mundona} ~~khosi~~ ^{khosi}. Vha vha vha
 tshi pfana na vha vha na vha
 mbedzi. Mahosi avha o vha a tshi
 pfana, hone vha sa vha vha. Khosi

ya Vhalenbethu ndi musie ene
 Mutalejwa, Vhambezi e Luvhimbi
 lwa ~~MaKoloni~~ ^{golepi.} Ene Luvhimbi hu pfi
 o vha e na madambija tshi kona
 na u nisa mupula musie lo oma.
 Vhathu vho da Ha Luvhimbi u buha
 mupula, vha da nga vhungzhi vha
 tshi bva mashangoni othe-othe, ~~a~~ ^{vha}
~~dzulabo~~ dzitshaka-tshaka na dzindimi
 mungzhi-nzhi. Hu pfi ene mukalaha Luvhimbi-
 mba' - lwa gole (Luvhimbi) o vha a
 tshi konou resa na maphungo nga
 nyambo dothe dza mashangoni. Ene
 hango tawanga u dzama, o lalama nga
 maanda nahone hu pfi o vha e muthu wa
 u tshimbila na mashango othe a tshi vhone
 kudzulule kwa dzimwe tsa tse (tshaka)
 Tshiduhulu-kuku tshave tsho vhadzicwa
 vhuhozi nga Vha-Senzi vha Ha Sphaphuli.
 Mudi ~~wawel~~ wo vha wo dzula tshini ~~sa~~
 Mudi ^{we} ~~wa~~ ^{namisi} wa pfi Ha Luvhimbi (George Holtz)
 1 Thavha dothe dzenedzila na dza Makonde
 ndi musie dzi dza Vhambezi na Vhalenbethu.

kom langa.6

K44/5

340

Uhadan vhone mivhuso wawo
wo ola u muhulu thungo. ya vhuikati
na vhuikovhela.

Kam Camp 7

340

K44/5

Dzina la uri VhaVenda ndi la Vha-Ngona
vhaiwe vha vha tshi dzula vhubati
ha shango. Klossi yawo ~~ha~~ ha
hu pfi vha e Venda. Uho vha vha
tshi tou pfi VhaNgona vha ha Venda kana
vha Venda. Vhaiwe VhaNgona ndi
ndi vha Kapulu, vheniso ndi
musi vho dzula Uvha.
Uhothe avho vho vha vhe Vha-
Ngona vha Vha-Dan.

• vha ri klali idzo dzo vha dzi tshi
 fhiswa ngatmini; hune dza vha
 dza dzula usunka ^{hu} zana tshi
 phela minwaha ya zwigidigidi
 dzo dzi khwatha, phase ha matunisi?
 Vha-Ngora vho vha vhe na vhatela
 vhekati hawho. Vhutanyi ha izwo ri
 vhu wana kha zwithu zwo itwalonga
 timbi zing' zwa wanala marubini
 avho. Zwithu izwo zwothe zwi a kona
 u vha hone avali zwo tou fulwa
 hu tshi shumiswa wone mulilo.

[Na fhu ri fanela u diwa uri, asi
 mad ~~Mad~~ phadan vhothe vhani ^{mboni} vha
 mivoni yawho vha vha Vha-Ngora
 Vha-kale vha ri Vha-Ngora vho
 da kabekale muna vha wana shang
 li ~~si~~ ^{vha} vha ^{vha} vha ^{vha} hone vho vha
 vhe si ^{vha-venda} vha-ngona, vho Vha-ambethu
 na vhambedy. Vhone vho vha vhe
 vhatukutukie. Phe Vha-Ngora vha
 vha ngi, na thakla yawho ya ^{vha} phadan
~~si~~ ^{vha} vha ^{vha} vha ^{vha} anda nga

nga maanda, vha hembethu na vha-
 Mbedzi vha mba di kuvha vha
 songo hwa narho. Haplu diklosi
 dya vha Ngona dya dya dya vha
 faya zwa vhu di, dya vha titeledya
 kha maswina ^{aka} lava ho kule.

insert from oppos. p. 4 ⑦ vha Ngona na ~~na~~ avho vhe vha
 vha vana vha khidzana zwa vhu di
 Misi ifa ho vha hu sathu u
 vha na vhuswina; vhathe vho
 vha vho phata midavhini ^{tsipi}
 na milambo. Marubi a vha Ngona
 a anza u wana la phasi, khagala
 vhunga no no di zur pfa zwanu vha
 Ngona vho da phano vha tahi boa
 vha kowhela, zwinu ri do tou ^{amba}
 nga afho hune ra vha kale vha thi
 ri vhuza nga hune vha dioha
 nga ho. Vhone vha ri vha pfe
 nga vho Makhulu warho na
 vhone vho pfa vhenwo vha kale
 vha tshinyokotile.

Maphungo a avha vhatlu a
 u konda u wana ndila

11. 11. 11

kon lang 9

tshiala tola khangwa thanna.



mwegwi ha di seguli.

yao zwasulundi, ngawo vhatu vha
~~iret~~ vha-Ngona a vha toba funa u di
 chula nge vha ~~to~~ u nyadijwa nga
 vha-~~Senzi~~ vhe vha vha kunda.

Ishini' ra diwa ndi uri ~~vha~~

~~Tobola~~ vha Dau vha ka Raphulu na

habeu vha Damani

vha Tshakhuma vho vha vhe vho
 mahosi a vha Ngona, ndi uri ndi
 vhone vha-Ngona vho sala ho na
 muso vhani' nako vha tshi di-~~gum~~
 ra wana vhatu vhamphi vha ~~vhe~~ diwahako.

Kuele kwa avho vhadani vhamwe
 a ri tou kupihesha, kwe ra pfesa
 zwa ndi kwa vha ~~Tshakhuma~~ ^{Damani}.

Ihe tshi khodwa shango ilo hu tou pfi:


→ "Tshakhuma tsha Moma ndi a-huma
 ndi tshaga tsanga ya Radzaga tsanga
 ya ~~Tshala~~ tshikwe; Phandula shango

~~nanzana ya tshipembe~~ ^{nyama wa Ratshe} ~~na tshikwe~~ ^{na tshikwe} vha

Tshakhuma tsha Ma-bodo ndi a
 bodomedza; Ndi Tshakhuma tsha

Madijhandila ndukulu ya vha Adakani

vha Damani vha Dau vhe vha tshi da phano

9. Shango line' vha Tshakuma vha boa 
 khalo hu pfi lo vha li tohi pfi Damani

Radzaga I

ni.

Venda vha phandakana vha ya nga dzikho-
ro na nga magotavho, phedzi vha-
di lwaha mahosi avho mahulu.

Vha Dau ^{Pha Damani} ~~vha Tshakuma~~ vha da
vha fhata musanda wavho ~~henge~~ ^{fhata}

Tshakuma

hume namusi ha pfi Tshiozwi ^{Phasi}
~~ha~~ ^{na} kutavha kwe vha kujira ^{dzija} la uri
~~ndi~~ Matumba ^{ndi apho lu na} Namusi ndi phetso apho
ndi hone ziphoni zwa vha Dau vha
Tshakuma, ndi hume vha ita
zwa u huesa thavha ^{kana u tevula} ~~na u tenguza~~

Mahosi avho a u thoma a a dihui,
hone ri sokon pfa uri vho vha vhe hone.

Nga murahu ha mirwaha minghi vha
~~vha~~ ^{ndi} vho no dzula heneho Tshakuma, ^{linwe}
gota le la vha lo dzula kha thavha ya ^{lwekani}
la thoma u dina nge ^{vhalisa} vhatukana vavho vha

thoma u ita vha tshi vbulaya ziphuwo zwa Musanda
nahone vha tshi rwa vhalisa vha phedza. Ndi
Zwila ~~ha~~ kha vha Dau hu tshi vhesa Ra-
dzaga ^{itanga} maala namana ^{thavha} thaha vhu kovle

Munna uyo hu tshi o vha e nambu
mutawuku - tawuku o tawuka na nde bvu
Zwino dzila phambano dza vha ^{na} vha ^{fwal}

dya di ya phanda, swika ~~musiwe~~ ^{musiwe}
 wa Radzaga lamo pfi ~~the~~ ^{the} Katsikilam Katsikiang
 a ~~tohi~~ ^{tohi} kunga dikhonani dzawe dya hangang ya
 musole vha ya ~~musanda~~ ^{musanda} wa Luwalani ~~si~~ ^{si}
 Riri ha thava ya ~~thamukalanga~~ ^{thamukalanga}; vha ri u
 swika vha wana mudi wo ona ho
 sala ene khosi na vha fumakadi vha
 si gathi, zwenzwa ~~the~~ ^{Katsikiangwana} a mbo
 di vha tabela a fosa khosi a i -fisatshi-
 vindi; ndi uri a i vhubhanga utou
 i tohipa, vha fumakadi vhone vha bva mudi
 vha tohi shava. Vhathu vha tohi ri vha yo
 phalala, vha pfa Katsikiangwana na khonani
 dzawe ~~the~~ ^{the} litza ngom ya gundo, tsha
 tou ~~ndi~~ ^{ndi} tshira tsho ~~the~~ ^{the} thubaho mudi.
 Vha Luwalani vha mbo di shavhela ngi
 ha Radzaga ~~zwenzwa~~ ^{uri vha} wane thuso ~~the~~ ^{ya y phanda}
~~maswini~~ ^{maswini} yo o vha tabela vha
 sa di vha hani a bva hone. Na
 Radzaga a kamuka uri maswina anga
 vha o dzena hani shangoni lawe.
 Ngi Luwalani ~~the~~ ^{mudalo} wa vha u tshi
~~khosi~~ ^{khosi} daliva; dziphala di tshi phangoa, ~~the~~

Ratsiangwana o' di ita khosi ya
 Luohalani, ~~na~~ ngins en^e mukolobwa ~~na~~
 shakhuma. Ndi musisi e ene mukolob
 wa mndu khukwane; phedzi nge
 a ita izwo, khotsiawe a mu ~~ta~~
 singutshela a ri ~~o~~ no di di ita
 khosi ene mune. Ha sumiwa
 tshisa tela u yo mu dia, phedzi
 a kunda u bva ~~ho~~ ^{nyadini} wa Luohalani.
 Ene na dzikhonani dawe vha ~~di~~
 dzula henepho Luohalani vho'thula
 zwothe zwaho. Wa vha mudi u sine
 vhasadi, wa ~~na~~ ^{maswuhana} phedzi na
 khosi i ~~na~~ ^{ya} khombe. & Nga
 murahu ha tshifhingananya vhattu
 vha shango ok ta Luohalani vha da
 u luha ayo maswuhana, Ratsi-
 angwana vha mu ita khosi yawho.
 Khotsiawe a mu kwengweledza ari
 a ~~na~~ ^{lyobe} ngei musanda eye a hana
 a ri: "Ili shango ndo tou ~~di~~ ^{li} lwele
 na khonani dzanga, zwenzwo ndi
 langa na khonani dzanga ndi do dzi

kovelala niobundu yadzo. Kinga si luoke
 nge ngauti nne nde na di latwa
 nga mune wanga. Hufha ndi
 sa do la ifa lawe musi o ~~loche~~^{fo}
 u luoka musime nyana a nonga
 nne a a thi zwi koni, u kovelala
 musime shango le nda ^{to} li hwela!
 3. Ratschingwana ~~to~~ phe a hana ho vha
 u isa shango la Luobalani uri li vhe
 lithihi na la Telakuma. Hana hone
 ho ngo vhu bvula, o di ya ngi
 musanda wa Telakuma musi
 ya dithi ~~hwa~~ ^u hwele ha thava, hu
 tshi lumwa mapula ^{namiso} miswa
 kana hu ~~tshi~~ ^{thava} i tshi le
 mavhele maswa — mufhoko wa
 limiso ho nga wono ^{mwa} mwa.
 Hano ~~phela~~ minwaha minghi madi-
 vha a ya; ndi uri Radaga I a fa.
 We a dghena vhubosi a vha
 Bodomedzha murathu wa Ratschingwana
 wa inwe ndu thukhu ane' dzina
 lawe zamusi la pfala tshindoni

Uha Ngona vha vha vha. sa longi
 Khosi dya ^{tophisadi} vha sady u vha vha vhesi
 vha vhatu ~~khathih~~ khathih. Ratchi
 Ratchiangwana, we a vha e mutuka mu-
 hulwane, a mbo di dphena musanda,
 a pandela vharathu na vhaime
 vhe vha vha vha tshi vhangitani
 vhu hosi, vha tshi tshinya mudi nga ^{diphena}
 Khosi iyo ntawa ya Salama nga
 maanda, hu ffi o vhone zwiduhlwana.
 Ratchiangwana o vha e na vhana vha
 si vha ngana lini, ngani o vha e khosi ya
 musadi mithihi. ^{Madzwa} ~~gijwa~~ o ri u ka, ha
 dphena irwana wawe Mphadza'a d'ovhoni,
 munna wa ~~goda~~ tshinade wa dzwo dzwo roba.
 Onoyo hu ffi mususo wawe wo vha wawhuti,
 ngani a wo ngo vha na phutphuse na
 zwiamba nga musaku, shango la vha la
 Malacte. Mu kosi we wa vha u tshi pfa,
 wo vha u wa u tshela ^{mbilemutondo,} ngani
 dya vhalala vha vha vha tshi dji funesa.
 Uha dau ndi vhone vhatu vha vha vha
 tshi ^{tama} ~~funesa~~ u liza mbila na u imba malende.

Thovhela uya wa ta mu amba ndi ene
we a ~~dyed~~ vbinga vhdzi vhanghi vhanghi;

~~Mjavhanghi~~ vhana vhave ya tou vha ^{nyamangha} i si
thuklana na tidzana i "ida-^{vuhone} ~~u-^{thuklana}~~".

~~vharidamani~~ vha pfi ndi musi vhe ^{vobathu} vha-
mba-tuwa vhotle vhanwe vavha vho
tawuka, nde vhe dzi teli ita una u vbonaga;
vhanwa vha ndebvu tawuku vho thoswaho.

Mahosi o tsholaho Mphahla vhubosini a ri
a divhesi, ⁿⁱ sokou pfa uri o ho dzhema
~~murwa~~ wawe, ^{Mahosi} vhusaho a tahi
di ~~zaka~~ ^{lovha} vha manghi nga murahu
ha Mphaja musi vha-Senzi vha sathu u
swika fhano Uenda.

Luambo lwa a vha vhatlu hu pfi ndi
musi lu lwonolwa heni va amba namusi;
tahi lu Lu-Uenda lwe lwa mila dzinyambo
dzothaza vha-Lembethu, vha-Twanamba na
vha-Senzi nangwe vha vha-Lemba; ^{hona}
lwo vha lu sa ^{tu} nga Lu-Uenda lwa
namusi nga vhubuma, ho vha ~~lu~~ na
phaybano musi nyambo dzi teli tangana.
vha-Ngora vho vha vha tahi ri "i dida" vha

Tha Dau vha Tshihemi na
Tshihemi bu pfi na vhone ndi vha-
Ngona.

u swaga vlo vha tahi ni u pinga mafua tshifi
"mukhahi"
KAA/5

amba u swa "lesesi" vha tshiridza lushaka,
 ndimo ya ~~ya~~ vha lenzi vha tshi dzhena Venda, ndi musi
 tshakhuma hu tshi vhusa ~~Ratshidzhu~~ Ratshidzhu vhu
 ene makhulu-kuku wa ~~Uphaganani~~ Uphaganani vha
 Tshakhuma, ~~am~~ tshi vhané' vha tshi losha
 ha pfi: "Ozulani zwanu dan," vha tshi thaphu-
 tshedza ha pfi: "Ozulani zwanu dan, Munda-
 mani, Ratshidzhu," aali e mutluka,
 Uhasidzana na vhasadyi vhone vha tshi
 bwanelwa kana vha tshi vendlwa hu
 tou pfi: "Ahee, dan, Mutdamani Nwa-tshi-
 embe kana Nwa-Dombu, ~~Udanda~~ voda
 la Venda," Uthothe thafenda vha vha-
 ganani ^{kala} ndi harho ^{hu pfi} vha Ngona. Hone
 vha bva hone hu pfi ndi Uthukovhela
 shangori line' dzina lalo la pfi Damani;
 ndi ~~ya~~ vha pfi Uthadamani vha tsha-vhuya-
 duvha. ~~Uthadamani vha tsha-vhuya-
 duvha. Uthadamani vha tsha-vhuya-
 duvha.~~
 Ratshidzhu hu pfi o vha e klosi
 yawhudi, nahone o vha na indalano
 nda pfi; o vhora zwidzhu-kuku-kuku.
 U da ha Uthalenzi ho pfa vha tshé

mulamboni wa thembe. Thathe vha shango
 lothe la Venda, ndi uoi Thatgona (Thatamani
 Thatwanasaba na Thatam vhothe), Thatmbedji,
 na That-Lembethu vha opha thatvadi avho,
 nge vha vha vho pfa madambi a ngoma
 yavho ye ya vha i tahi pfi Thundundu kana
 Ngoma - unguke ~~ya ya~~ Ngoma iyo
 ndi yone ye vha i tahi ri u lila muthu
 a si Muisenzi a mbo gi wa fhasi a noka,
 # maswina a mbo da a mu vhubaha nga
 u mu remekanya nga mbadwana ^{gasho}

Thatwanambe na ~~that~~ That-Lembethu vha
 Nyhelele vha fhan kundwa; vhangli vavho
 vha luvha vhaiwe vha tevhele mahosi
 avho o shavhaho. Tshivhula a shavha
 vhubakela na vhaiwe vhaDan; kuno
 vha ~~that~~ vutele vha ya vhubva ~~duvha~~
 na khosi yavho. Raphulu na vha
~~fhan~~ Thatkhuma vha luvha nga musidzana
 iwana wa nanga khulu ya vha-Ngoma.

That ~~that~~ hu pfi vho vha vha na musi-
 ka wa vhubali; ngauri vho vha vha
 tahi ri u sikela na fhela nga luvhaka.

nga vhuuzhi nga ^{wone musika} ~~one ma~~ na Venda. Apha
 ndi he ha bva ^{musika u no ri} "Nwana wa
 Mu-Ngona ha malwi"; na uri: "shubini la
 vha-Ngona a hu fhatiwi ni nga ~~phela~~ nga
 tshishaka". U swika namusi vha-Ngona
 na vha-senzi vha ofhana nga anes madambi
 a ngoma na a musika, hone u
~~del dzetshelana~~ ^{vha hu vho jongana} ~~u gona~~, nga uri 'tshaka
 idzo mbili dzo farakana dza vha lushaka
 lune' namusi hwa pfi vha-Venda.

Kha ri dovhe ri humele ngei huna
 ra bva hone kha vha-Damani vha Tshakhuma.

Mutupo wa vha-Dam ~~u vha~~ vha Tshakhuma ro u
 mudamani pfa uri ndi ^{yone} "Ndan"; vha tshi rendwa
~~vha tshi tshikhumbi~~ ~~vha tshi tshikhumbi~~ vha tshi ana vlog vha
~~vha tshi tshikhumbi~~ ~~vha tshi tshikhumbi~~ ~~Muano wa vha~~
~~vha tshi tshikhumbi~~ ~~vha tshi tshikhumbi~~ tshi ri "Tshiembe" ~~Mutupo~~

U Tshiembe hu pfi o vha e makhadzi wa
 kale, wa zila vha tshi bva Damani.

Ngaohuya ha bvelela muinwe mutupo
 wa tshi-senzi u no pfi "Mukadzaná", nge ha
 vha na makhadzi muinwe we a vha o lalama.
 Vhathu vha fhembana benepho, vhaiuwe
 vha ri: "Dine ri tshi ana ri ri Mukadzaná"

vhanwe so vha hana vha ri rine ri ^{soke} rine
 Tahimbe^g ri shanduki. Vhanghi vha vha vha
 ri ^{Mukadzana} Tahimbe ndi kheladi, ri tou ri: "Tshien
 nga Mukadzana nda' ri nga mugele zokunda.
 Ho no fhela mivwaha minghi vha-beni vha
 tshi, yhusa, Venda, ha da mivwaha ^{mufumafadi} vha
 we vha a tshi ^{Mutumbe} Mutumbe; wa lushaka lwa
 vha ^{Ndalama} Ndalamo, fhateha tini ha thava ine
 na namusi ya pfi Mutumbe. Ndi ngei
 tini ha thava khulu ya Manguele, yya
 di Mbambulufha i tshi vhusya nga vha Dan vha Manguele
 vha pfi ^{Mutumbe} Mutumbe o sala musa Thoboya - ndou
 a tshi pfulawa Dyata a tshi ya Thoboya Deobula.
 vha vha Ndalamo Mutumbe a vha e ^{ene} ene makha
 dzi mubulu, ane' e vha vhusosi hachho.
 vha Ndalamo vhanghi vha da nae f' Tshakhuma,
 vha nga mulalo vha tshi luvha
 vha Dan vha Damani ngauti ^{vha vha} vha nga da nga
 mubango. ~~fhateha nga~~
^{Ragaga III} Ragaga, we a vha e ene khosi ya
 Tshakhuma, ^{fhateha} fhateha musanda wame
 thavhani ya Luvhalani, fhateha hu no
 pfi ^{Musubhani} Musubhani, a vha munne wa

2840

K44/5

^{Madziblandia}
 Ilo la uni Madziblandia lo da
^{li tsh}
~~minaka~~ tou vha tshiranda tsha
 Tshakkhuma nge ma hosi a
 hore a vha ^{ca vha e} ~~onefa~~ na milima
 ya u sikala shango kana u
 dzivhela madambuwoni ^{a milanda} na
 magondoni a shango a yaho runda
 ka shango. Vha Tshakkhuma
 vho vha vha tshi dzivha shango
 nga misika, ya tshu

~~Tshu tshu~~ ^{vanisa} ~~ya tshu~~
^{Rundani}
 Rundani ya hula nge ~~Madziblandia~~
 a tsha kheladi. Izwo zwo vha zwi tshi ila
 kha vha Rundani.

Muntumbi. Ndi hone hu tshi bebwa
 vharwa vhanghi-vhanghi vha vha na
 khaladyi w ntkhi, we a vha a tshi pfi
 Oombo, we a vha a tshi nga a si muduhulu
 wa Uha-senziq mutshena-tsheng. Muswa
 & wa tanghe a rinwa la ~~Madzibani~~ ^{Rundani}
 nge a pfi ndi ene a no do ~~tshi thivhela~~
 kana a thivhela maswina ndila nga
 musika wa Uha-Dau - Uha-Damari. Kala
 ho vha hu tshi dzhelwa dzindila ^{da magondo}
 na madambuwu. Ndi afho he ha ^{mele} dzina
 lenelo line' na rine ra li dzhela la u
 dzhela zwa zwi bwa ho kula. ^{Rundani}
 a nea ~~Madzibani~~ shango la thavlan' lothe,
 a si dzinduna dza ~~the~~ hone dji mu luwa. ~~##~~
 Misi thovhale a dzama, shango la dzhaniwa
 nga muswa wawe a no pfi 'Emasani,
 we ~~the~~ lwa na murathu wawe Madzibani
~~the~~ a fuma u mu pandela nga a
 si o vha a tshi mu dzhela vharadyi vhave,
 Phambano ya mbo di vkhulu, na zifhoni
~~Madzibani~~ na vharathu vhave la pfi vha
 songo tsha da. ~~the~~ ~~the~~ ~~the~~

Mukegulu Mutumbe a vha sala nge
 a vhona 'Emaini a tshi fuma u
 pandela vhana vha we. A ^{phambela} ~~ambela~~
 dza Rundani uri a lithe u dula
 na uyo khaladi we a mu ^{whinga nge} ~~phanga~~,
 a vha ~~hona~~ o tou ita vhu-pombwe nae. Dzinga
 la uyo musidzama la vha la ^{tshi} pfi
 Matempe. Ndi ene we a beba mudu
 ya ha Matzibhandia ya namisi.
 Rundani a mbe hana u pandela
 ula khaladi. Uvathu vha we vha
 pfana nae vha lwa na mukomana
 wavho mukhumbane ene 'Emaini, ^{we} ~~vha~~
 dia vha a ^{khosi} ~~ene~~ ya 'Uha-Damani vhothe
 vha shango la Venda ^{vho} vha ^{shanduka} ~~na~~,
 nge vha vha vho dza khaladi, na-
 hone vho pandelwa zuifhoni zwa thakale.
 Uha ⁿⁱ ~~ni~~ "Rine ri ~~tshi~~ ana ^{nga} ~~ni~~.
 Dombos khaladi ashu; ~~ni~~ ri tou ri;
 Dombos nga mugele. ~~Uyo~~ Uyo mutupo
 wa uri Tshembe ro u lata". U shanduka
 uho ha vha hone he ha vusa
 sambela la uri: "Uha-Tshakuma

vho tswa mutupo; vha ana nga
somba Tshakuma. Na namusi ilo
samba li tsee hone.

Mukhwa uyo wa u vhingwa dikhaladi
no vha u tshi ila kha vha dan vha-
dani. A tse pfi ndi mukhwa ^{wo}
daho na vha-senzi vha ^{ho} Lembanjika.
'Emiani a pfulewa Luwalani a vha-
lela ngei thavhani ya vho Makhulu
wane, ngei hune ba namusi ha pfi
Tshiozwi kana ha Mulangaphuma.

Ho no phela mirwaha minghi, ndi
hone mmame wane Mutembe a
tshi ita mahalwa a nna vhidza ni
vha dothe vha pfane na ^{vharathu}
vhave vhe vha vho dyula Mbambula.
Rundani a nga u a di vhedza, ngeni
hone o puta vhuswina.

'Emiani a ^{ya} tswa ngei ha murathu
a si na nyofho; a nwa halwa o takala
zuenezwa halwa vhu tshi khon
nwiwa, Rundani a mbo tshipa
khosi a nga musahu. Vharathu vhave

na vhone vha namu ~~thava~~ u vbulaha
 iyo khosi ye ya vha isa divhi tshithu.

Evho! Murosi wa taviwa waini
 thovhela o liswa tshivhindi; ndi hone
 vhathe vha vha tshi shavha vha
 ya Luwalani; mudi wawe wa fhalala
 Ndi hone mudi wa
~~thava~~ tshi tshi tshi tshi tshi tshi tshi tshi
 vha Maswie. Muna nyo dyina lane lo vha
 li tshi tshi Muregu. Ndi ene a pphalaho
 tshivendoni tshi khodaho vha Luwalani
 ngauri: "Muregu wa tshi tshiala tshita
 tshiala tsha khangwa vha vha, ha-
 muna ya katchiangwana tshant sanga
 ya kachaga a dovhoni, Muregu ha di-
 reguli, phalaha shanga ha he Madjwa - nditha
 vha Maswie ndi tshi musu vhe vha lu-
 shakadwa vha vha Luwalani vha kale,
 Mutupa wavo ndi musu u tshi tshi
 Mungai. Khosi yavo ndi musu e ene
 Mairangaye, ari vha ana ngae
 na naurisi vha tshi ri: "Khotai anga
 Mairangaye. Shavha ya Luwalani yo vha
 i ya vhenavho vha kalanga; nazwino

i pfi Tshamukalanga, Ndi lore dzina
 la thwaha yeneyo ya Luhalani
~~In~~ Rundani ori u ponda Emaani, a
 mbo di fhambana na mmeawe
 Mutumbe, a yo fhata ngei marubini
 a vha makhulu wawe vho Ratshangwa
 na fhala zwifhori zwaphakale. A
 mbo vha ene khosi ya vha Damani
 vha Tshakhuma vhothe; hone vha
 Maswie vho hana u mu lwaha, vha
 di-dzulela na mokololo wawho.

Rundani a ramba ^{tshira} tsha u yo dia
 vha Maswie, humo a kundwa u dzhena
 thwaha ya Tshamukalanga, nge vhathe
 vha Mutindori na vha Matavha vha
 ima na vha Maswie. Vha ^{Rundani} nga vle
 edzisa u dzhena, hone vha wana vha ka-
 langa vho kwea, vho khwatha. Vha
 Damani vha humo vho kundwa.

Rundani ori u fay, ~~ha~~ murewa wawe
 a na pfi Maswie a vha ene khosi. Na
 ene a si pfane na ^{nykomana} ~~ha~~ wawe Muregu
 shango la fhandulwa nga vhu vhubatji.

~~Masakha~~ ^{a sho} Mulambo wa Mutenda - binyu
 ka, u gonyu u swika Tshavharha. Hapana
 na mukegulu Mutumbe o vha a tshel
 hone; o lalana nga maanda, na mato
 awe ^{vha a khadi vha;} hone tshel dzawe dzo
 no tou nembelala. Uho vha vha tshi tou
 vhopfa ludede kha thoho, hoo uri tshel dzawe
 dzi si tibe mato. Hu ^{phi} mutamani wawe
 ho vha ho mela mavhudzi. Vhathalano
 vhothe vho vha tshi mu luvha, vha sa
 luvhi ^{vhana} vhaawe. Mashango mainwe
 a kule na one o vha a tshi mu luvha.
 Eneo ^{mainwe} ndi a o ndi. Khubvi, ^{mutula} na
~~Mabala~~ ^{Muregu} a fhata mudi wawe ngi
 Luwalani fhethu hu no phi Musumani.
 A vha ene khosi ya Luwalani; a ^{vhusa} vhusa
 u swika ^{mu} Mutindoni u bva Mutenda.

Mase Mutumbe o no ^{phi} fhafha, shango lothe
 la thavhani nga nda ha Mangwale
 la vha ^{la Masavhe} laane; na vha-Ndalano vha
 mu ita ene khosi yawho. Ndi uri na
 ala mashango a muneawe a kule
 a mu luvha a vha ene khosi ^{ya} ya.

Ngena duwalani Muregu a mbo di
itela zwiifho zwanwe, apha hu no pfi balwe.
Ndi uri thana vlawe vhe vha fa
a vha ^{swita} ~~shulanga~~ berefho tabitakani.

Ngei zwiifhoni zwiibulwane a hongo tela
yiva nga muthu nge vhathe vha Ru-
ndani vha vha vha sine dzithungu' na
mafumo othe a vha Damani. Thone vho
tungula ^{phala Mbambula} ~~zwanwe~~ he ha fela mme-
avho na ^{Emdani} ~~Emdani~~ we vha ton nin
lisa tshivhindi. Thavha i si tsha
hwela, mifho ye ya tshewa ya fhela
nga mbo mberha na zwinori. Shago
lothe la shaya mulalo, nge zwiidzima
zwe vha zwi sa tsha lumiswa. Ma-
swina a dzhena Tshakhusa a thuba
dzikhalomo na vhathe. Manwe
maswina e a da o vha e Magwuhu
e a bva thungo ya Tshipembe. Ene
o riswika, a dzula tshini na
Tshiozwi hune xanusi ha pfi
Magwuhuni. Dzina ilo li amba ^{one} ~~sh~~
Magwuhu e a da u govhela vha-

Damani vha tshakumba i tshindwa idzo
hu pfi dzo itwa nge vha-Dau vha-Damani
vha vha vhe na mivhango nahone
shango li si tsha dzivhelwa.

Vha-Damani vha Rurudani vha fasa
tsha u konda; ~~sh~~ vha liga vha songo
lima, nge Magwuhu a vha ~~g~~ ^{klakbedza}.

Dzikhomo dza thubiwa kathihi na imwe
ya mudzimu wa VhaNdalamo. Dzina layo
yo vha i tshikhagantshana kholomo ya
mavhalavhala a u naka.

Maswina ayo ho ngo ^{ya u lwa na} ~~ho~~ ^{ma} zuitungulo
vhatshu vha Muregu nge ~~vha~~ ^{vha}
na mafumo a kale ~~zwa~~ vha zwi na ene.

Magwuhu ayo a tuwa na kholomo
na vhasidzana vha Ha Maswohe; ~~sh~~
shango ka sala lo tshinyala. Hu
si ~~ka~~ ha da vha-Landzi vha tshi bva
thungo ya Devhula. Vho taha nga ^{Sampuni} ~~thungo~~
~~vha~~ ^{vha} ~~thungo~~ vha thungo ya vHulandzi. Vho
da vha tshi funa u dia shango la
vha-Dau vha-Damani. Vha phata mishasha
yavho thavhani i ne' na namusi ya

ya pfi Mulandzi, misikanya yo vha iminzi
 vhatlu avho vho vha vho da u dyha
 shango la Tshakuma uwi li vhe lavho.
 Maswina a linga u lwa na
 vhadan, hone vha kundwa nge
 shango la vha lo djwhelewa nge
 Muregu. Maswhe a na ene a
~~vha~~ ^{lida} ngomana ya makhulu wawe
 Mutumbi ~~ya~~ ya a da nayo
 musi a tahi lwa Dzata. Ngomana
 iyo ~~ya~~ yo vha i tahi pfi Thundundu
~~ke kana Ngoma~~ ~~Dzanda~~ Ngoma-Uzundu
 Hu pfi yo vha i tahi fana na ila ye vha-
 lenzi vha da nayo vha tahi ^{bo} Sevula.
 Tshakandi vha tuma vho kundwa,
~~shango~~ la sala lo lala, hone hu sinisa
 mutakato kha vhatlu nge u djindan
 dza Tshakandi dza da dza phedza vhatlu
 na djinova dza vha vhadjinuni dza ^{dina} dina
 vhatlu nge u tolou vhorala dji nga
 djinduni na hotho-hotho. Na mikumbi
 hu pfi yo vha i si taha miwa ngasi
 mifula ya sinisa ^{mapula} a sa thu u

vhukwa; ambo di: moda a singast, gub
 byo zwothe hu ffi zwo vha hone nga
 u' mitjime yo vha yo singawa nge
 vha sa taha ~~zwothe~~ ^{hukwisa, thgula.}

Maswohe a nga namina iwaha
 a tuwa a ta ngei Uhu-Mbedzi a
 mashangwe awe, ~~a tati~~ ^{a dyula} hone
 miniwedjinyana a tahi lugisa shango
 lawe lo lo vha lo dyula vhomalym
 awe ~~vha~~ vha-Ndalamo. A longi
 vha vhumba vhuhoi ha khubvi a
 konow di lugisa uri a longi bwenda
 lwa u vhuabeka hayeni hawe ngei khakuma
 O vha a tahi pfana na dustinli khosi
 ya vha-Mbedzi, wa kadana vha a tahi
 luvha vha-Ngona.

Uhu-Mphaphuli vha si takalele
 vhukonani ha ayo mahosi, ngani na
 vhone vho vha vha tahi emula
 mathango a Uhu-Mbedzi na a
 vha-Ndalamo. Mphaphuli a thona u
 vhangwa ~~Mod~~ Maswohe. A namela vhadinda
 vhave, uri vha ^{no} takalele vhuhoi.



Ndwa yeneyo ya Ramabulana ya phedya
maduwa mangli ^{ya tsh} ~~ya tsh~~ shiwa.

Ramabulana o da Tshakunta o thoma u

~~luwa~~ Ramulongo - nga - u - vhe - muiwe.

Ramulongo o vha o da agula Uvha na

vhaiwe vha - Ngona vhe vha vha tshi mu

luwa. Vhenewho o vho vha vhe ma-

salala a vnda ya ha-Raphulu.

Vhailafuri vha kundwa u dhena thavha

ya vha Dan vha Damani. Ndi hone Rama-

bulana a tshi yo sambia Matentai uwi a

mu ~~thase~~ ^{farise} ndwani yeneyo. A da a phata

thavhani ya Mauluma, he ha vha ^{ya gona} ~~ya gona~~

~~luwa~~ ^{mu gona} la ~~mu gona~~ la vha li pfi

Ramphaga. Musande walo he vha lu Kutamani

Ramabulana a kunda vha Dan, nge a vha

e ~~ha~~ vhathe vhanzhi na juvigidizwa ayo

Matentai. Aneo hu pfi o vha e makhwa

e khosi yao a vha a tshi pfi Buys. Misi

yeneyo ndi musa Luvhisi - Loris Trishanda

o no phata ngei Dzanani. Vhenewho

vho Luvhisi ndi one makhwa a u thong

shangoni la ~~ha~~ Uvnda.

Maswhe a e a tahi v huya a wana vho
 mu lalaba ordilani ila ya gondo la kate
 la uya vho tshedi. Maswina ayo a mu
 vbulaha ~~na~~ na vladinda vhaue.

^{Tshityumbu}
~~Maswhe~~ tshawe vha tahi kwsela musa-
 nda wawo. ngwi Mbilwi vho vha ite
 mshaga nga mirado ya mshiki wawe. *

Mafungo ayo a vbulakwa la Maswhe
 a tungaphadya vhatu vha Tshakhuma vhothe,
 hore vha kundwa u ita tshithu ngawo
 vho vha vha tahi ofha thung vhuanga
 ha Gole (Mphaphuli) ~~na~~ zvitungulo ~~na~~ zva
 na khamba ~~na~~ dya ~~na~~ vha-
 Senzi dya vha dya na Mphaphuli ngawo
 a vha e nanga khulu ya ngwi Dzata.

Na Gole a vbulaha khosi ya
 Tshakhuma, a nbo di remba ^{tshiva}
 tala u yo dia vha-Dau vha Tshakhuma

Mafungo awo a pfala kha vha-Dameri
 tshiva tshu tshu kule. Muregu a tamba
 la Tshakhuma la tswuka nga miriditang
 a tangasodza vha ha Gole vha tshu
 kule ngwi ha kha la Tsianda. Nenefho

Ngamamama irwaha ha da kamabulani iri
 a lwihisa shango la Tshakhuma; ngawo ~~toke~~ ^{sevhula} toke
~~thoko~~ Thokoza ndon a ~~to~~ sukhela ~~obuku~~
 shango lothe lo vha lo dovha la nga kale.
 Mahosi e a vha a tahi lwaha a sala
 a tahi di- vhusa. Zwenegwa vha-Senzi vha
 tou dovha u londa vha tahi lwihisa vha-
 thu vhothe vha Venda. Uyo Kamabulana o
 vha a ~~dotha~~ ^{da} lwihisa Kolu-thaga, ~~that~~ we
 a vha a tahi vho di-hiswa nga Madziwa-
 ndila, zwi tahi amba mishumo ya vho-
 makhulu wawo, vho vha vha vha tahi
 dzivhela ^{zivira} dziindilani dya magonda. ~~zina~~ ^{zina} ilo
 li amba, ^{zwenegwa} flenda ri wana li tahi tou ri:
 MADZIVHA ^{ndi} ~~kana~~ uri muthua dzivlaho
 kana a thiwhaho, ~~ndila~~ NDILA ndi ^{ndila} ~~gonda~~
^{ine} ~~zhathe~~ namussi va i di vha, dzina ilo
 u rangani lo vha li tahirendo taha
 u ~~haha~~ mahosi a Tshakhuma, hi tahi tou
 pfi Madziwa-ndila tsanga ya li-Damani.
 Tshakhuma na lone ndi dzina li ^{ambalo} ~~huma~~ huma
 zivira zwa huma hone. ^{hu. tou} ~~haha~~ pfi Tshira taha
 khuma kana taha huma nga ^{pluanto} ~~haha~~ Lubanda ^{lwa}
 zwa misala-iro,

Tatini la murulu mordeni.

u pfana he vho makhulu wame vha si
 hu ite, vha khinya shango nga miwango.
 Vha-luvhalani vho tenda u mu luvha
^{nga}
~~ndho~~ a tenda uzi zwithungula na u luvha
 thavha zwo do itwa nga vhone. Ndi
 zvine na namusi kholo kholomo dza
 midjimu, Sombi na Pfunambe dza
 dzula dangani la luvhalani. Vhaferi vha
 thavha ya vha-damani ndi must vhe vhe-
 revho vhana vha Kadaga I.

Kaluthaga o beba vhana vhanghi
~~Kadaga~~
 vha vhatuka, vhanwe vhevo ndi
 vho-Mbodi, Mutengaphuma, Ramadi,
 Nduwambi, Sundani, Khangela, Maswa-
 la, Ganyane, Ramana, Kakhayana,
 Darhu, Mangbedy, (Nematawa), ^{Kadaga} Kadaga,
 na vhanwe vhatuku. Wa vade ya
 vhatu o vha e Ramana muduhulu wa
 ha Tshitemba; Mbodi muduhulu wa
 vha Ndalem vha ha Mukhobobwane
 vha e ene mikomana wavho vhatu.

Hu pfi vha kololo vha Tshakuma
 vho vha vha tshi fava mitavha mi-

^{matangwa}
 vheli ~~vha~~ ^{songo} ~~shothe~~ vanqwa nga mu-
 siwana kana nga mutsinda. Khosi
 iyo a ladza shango lothe muthu a wana
 zwa naka zwo tou thoswa. S Muzi
 lwa-ha-masia-khali-i-tshi-vhila ho
 tangana, muthu a vha a nga si ambe;
 U tshi wana khololo yo ya nga diphidane
 na zwiphinisa zwa vha-ha-mmani. Zwi
 U tshi wana zwo dadza thoha. ^{U Buzidela} Zwi lombe
 ndi muzi
~~zwa~~ vhe vho-diphuma'a Tshiozwi
 Muzangaphuma, na oho Tshinanga
 Mabunyu a u ranga, ~~one~~ ane a
 pfia ha-Nqwalungwala sa Matshovlana
 o da u dia Uenda miti yeneyo. Uha
 damani vha shavhela thungo ya
 ha Tshivhaha, he vha tanganezwa
 zwa chudi, ^{ngantsi} ~~u swika vha tshi tshungo~~ o vha
 dze ~~khololo~~ wa hova we a vha a tshi pfi
 Mudzonga. Onoyo ndi ene mune a
 Muzangaphuma wa Tshiozwi.
 Uho ri u vhuja mushavhani wawo
 vha si kale ha buelala ~~Mabunyu~~ mame
 Mabunyu a ha Muzila, o e a da phano

o rambiwa nga Tshikase uri a die.
 Delwamondo kholi ya Ma thafuuli kana
 vha-landji. Muvhali, ri songo ri khamu
 ndi vha-landji vha ka Masia kana vha
 Isianda, hai, ndi vhenewho ^{vho vha vhe} ~~ndi vha vhe~~
 vhatthu vhe vha da phano ~~van Venda~~
 zurila vha lenji vho no dhia shango fino.
 Vhenewho vha kale vha ri vho vha vhe
 Manzwati a Mazuya. Vho da vha tshi
 p'vva' thungo ya ~~Ma~~ thavha dya Madzimba-
 Korobe; vha tshi vva ~~Tshikase~~ ^{Ma} tshipembe
 zwinaka ^{gompe} yanyo ya Mabungu, ya
 ri u swika dwamondo, ya wana lo kwe-
 wa la mapfene mahulu, Madzunya
 niwawe wa lushaka lwa ~~vha~~ ^{vha} ~~vha~~
 djo djwela shango a vha fhadza
 nga ~~tu~~ vha linga nga malingawe
~~Masi~~ ^{tshira} ~~nambi~~ tshi tshes kule, hu pfi
 pfene likulwane la thavha la vha li tshi tshi
 bumba, nge la vha lone le la vha
 li tshi ~~lona~~ kona u ~~lona~~ ^{lona}, ndi uri
 li tshi kona u bumba na u ~~lona~~ ^{lona}
 vhatthu uri vha di-lugise. Mabungu

a edjisa u dghena thavha a kundwa.

~~the~~ Ndwana ya vha khulu, hone, vha ka-
Tshivhase na ~~the~~ Mabunyu vha kundwan
nako vho vha vho anda sa hatai.

Musi gomane ~~ya~~ vhuvhili i tahi dghena
nga phoro, muthu a ri: "Ukate ^{itapeni} ~~itapeni~~ vha
phelala Vandani ri do vha sumbedya
uri lino ndi la ha Matshie ^{na} mbado."

Iyo, vha ri u dghena, muthu a ^{pfa} ~~itapeni~~ a thavha
o vuvu tshothe; hu tahi sokom pfala
muano ~~we~~ wa vha u tahi ri: "Mbados!
Mbados! La ha Matshie ^{na} Mbado."

? Mabunyu eno a ri u ^{phanzijwa} nga
ditsanga a mho di kundwa a shavha,
inwe gomane ya wela luwani ha
vha maele 'o Miphululu ya ri waa! Ngo-
ma ya mungalo ya lila, shango la dovha
la ~~lala~~ lo rala unga kale.

~~Mabunyu~~ Mabunyu a ha Ngwana a tahi
pfa uri Muzila o kundwa nga Nelwanonda
a da ~~u~~ gowhela thavha ya Luwanonda
Anes hu pfi o vha e na vhubali, a
sa ofhi tshigidi-liri, ~~hu~~ bunyu

li tahi u pfa tahi tahi "thure" la ri "Mbas
wee! Si a otha", li tahi ralo ndi u
gidimela a kamengi hu pfalla tshigidi.

Unga ila undwa ya ~~the~~ vhangoni vha
ha Muzila ^{ya} kundwa, na vhenewho vha
si kore u dyena tha ya Lwamondo. Vha
fhedya nga tsanga na malingo a
Madyunya - tahi - ambata - nguwo - ya ^{mithe}
~~mithe~~ Mabunya aneo a da ~~ta~~ f
Tshakhima, ~~ta~~ tsa nga Tshikundwini. ~~the~~

Mukosi wa tsvhiwa shango lothe, uri vhatlu
vha khunyelele thavhani, ngei bakoni la
Mangweli. Vha Luvhalani ^{na vha tshiozwi} vha bwa
nga ^{daka} daka u swika vha tshi
ya ~~thata~~ u swika vha swika.

Vha Tshiozwi vha ya u dyula bakoni la
Musanda, hone vha tsvhalani vha
sala thungo ila ya seli, ngei hune na
nanisi hadi ~~thata~~ Luvhalani.

Hu tsee vhusiku vha Damani vha ^{thoya} vha
Mabunya. Ya lwiwa u swika li tahi
~~thata~~ ^{thata} la ~~thata~~ vhuva la kovhela.

Khona ^{Nama} ya ~~Mabunya~~ Mabunya ya vbulawa
\$ ya switiwa henefho Nangji tsini

ha muuma muhukwane. Na zimba henge
fhethu ho itwa tshiwelo ~~na~~ hmitela nri hu
elawe zwo iteaho misi e la ya kale.

Ishira tshenetshe tsho mbo di fhela maenda
Tshakhuma ~~pho~~ Maboda. Hu pfi vhaiwe
vha fumakadi vha sa ofhi, na vhone vho
faisa vha nna musi hu tshi hwiwa yeneyo
nndwa ya Madanda ~~na~~ vhaiwe vha
ndi vho Mudzinga & mukololo wa ha
Tshivhasa, ene mmila ~~na~~ ^{Muianaphu}

Ishira tshenetshe tsho ri u tuwa, tsha
ya tsha tangana ~~na~~ na tsha tshiwu
tsho tsha vha tsho rambwa hengegi Swadzi
nga Davhana inwana wa Hamakulana.
Ene o vha a tshi khou lwa na musa-
thu wawe Makhado, vha tshi vhang
vha hosi; Davhana a kundwa udzhe
~~Ishira~~ tshenetshe tsha tshiwu
Dzanani. Hengegi hu pfi vha ilafuti
vho tshi fhedza, ha ton tuwa tshi-
themugana fhedzi.

Muregi ^{vha nna} vha nna vha nna vho vha vho vho
vhamfi, vhaiwe vha nna ndi vho ~~Fa~~

Tshisevhe, K44/5
~~Tshisevhe~~ Giovanni, Mathese, Mphaja
~~...~~ Ramello, Mu-
 vhubana na vhanine vhatutuku. Mubhubana
 wawo o vha e Tshisevhe, hone, a siwa
 vundu ya vhubana, ngauri * mmeawe
 o vha e wa thundu ya ~~...~~ mmea
 Ramello. ~~na~~ Ramello ndi ene ~~we~~
 a vha e wa vhubana, hone, * muna
 wawe o mufisa a tshce mutukuku. Mu-
 komana wawe Tshisevhe a mu fanela
 vhubosi, ndi uri a vha ene we
 a lela khosi - Ramello we a vha
 a tshce mutukuku. Hone, muna o no
 b aluwa, mukomana a si tsha tenda
 u bva vhubosini, a di ita ~~...~~ khosi ya
 Luhalani, muthu wawe a kundwa
 u ita tshithu ngauri o vha e mutukuku.
~~Mtshisevhe~~ o ~~...~~ u ~~...~~ dzama, a ~~...~~
~~...~~ Ramello a konou di vhangela
 vhubosi ~~...~~ he a vha o fhuba nge
 mukomana wawe, we avha a se
 fulu fhuba ~~...~~. Vhubana wawe vhanine
 vha ~~...~~ a tshi dzama vhubosi, hone,

nga'u a vha e murathu wa Mbodi Madi-
vhanditi kha vha vha mmemi, a kunda
vhakomana vhalo vhe vha vha vhe
tshi nu nyadza. Mufbululu wa nanea
Ramucjo
Muf a dzhena vhusosi ngei Godzoori,
fhala ke vha vha vho no fhata muanda
wa suhulani hore.

Gumani, murwa wa Tshiseke a
shava na vhaiwe vho khotaimunene
waive, a ya ka Mashau a dzula hore.

Misi iyo ndi misi vha funzi vha
keke ya ~~Be~~ Bellini ~~Mission~~ Misioni
vho no fhata muhuhoya.

Mufunzi wa u thoma, we a da a tsho
muthongga, ndi ene Edmannu Schwelnu.
hi amba we a da a fhata mudi wa vhatandi
a hune, namusi ha pfi ^{talitacini} Tshitacini tsha
shakuma. Ndi ene we a da na
Mufunzi Beuter wa Mangoni, ka Tshibasa,
vha humbela kha khosi Kaluthaga Madi-
vhanditi uri vha funze vhatu vha we.
Khosi a si nge mainwe mahosi e
a shaya vha maane nga u pandela

vhafunzi vha fhungo la Mudzimu
 a tshilako ene Jehova na ~~na~~ Muvwa wawe
 Yesu ~~ho~~ Muphulusa shango. Mufunzi
 a newa ~~shango~~ a fhate fhala ^{vhukati} ~~na~~ ha
~~na~~ Mitanda na Mukuwulukuvhu.

Raluthaga o vha o ^{kookhela} ~~na~~ vha ^{vha} ~~na~~ vha ^{vha} ~~na
 vhave vhabulwani zuisi. Makossa
 Nemuhwoya ^{na} ~~na~~ Mbodi a o newa la
 Mubuvhoya, musi lo no dzhelwa vha
^{lyalacadi} Luwaleni, la Jhiozi la newa Mudzimu
 mmia Mwangaphuma, ~~ho~~ Maguvhuni
 lo vha li la ~~na~~ ^{shango} ~~na~~ makhadzi,
 aiwaa, ~~na~~ ^{shango} vha lo newa vha fu-
 makadzi, ngani mafota maina a dzhelwa
 vhukoma ha ha longwa vhone vha ^{shango} makadzi
 Jhe Dombu muwa wa Magiedzi o vha
 o ~~na~~ ^{shango} ~~na~~ mudi wawe ngi Matumba!~~

~~na~~ ^{shango} ~~na~~ Raluthaga o telana nga
 maanda, o ~~na~~ ^{shango} ~~na~~ dzama o na vha
 mukalaha nga maanda!
 Ori u dzama a ha ^{shango} ~~na~~ vha
 na khakathi ya ~~na~~ ^{shango} ~~na~~ wuhango wa
 vhaswa vhave. Vha vha vha vha

tshi vhangwa vha vha vhe: Mbodi,
 Mwangaphuma, ^{Khangwa} ~~Khanga~~, Rameano,
 na Dindani. Muriwe na muriwe a
 tshi vha a tshi funa u vha khosi ~~ka~~
 Rameano ~~o~~ hu tshi o kundwa ~~o~~
 muthu we a vha a tshi ngamu fisa
 ngawo hu tshi mmiawe o vha a
 tshi dzima. Ndi he ha vuvu mu-
 ro u no ri: "Rameano o
 kundwa vhu hosi nga mme wa
 u dzima". Hu tshi mmiawe ~~o~~ zwi-
 la a tsha mufumakadzi, o vha a tshi
 dzima vhadinda vha musanda maku-
 mba (mioniva). Hu tshi u da mueni
 a si tende ~~o~~ tshi dzula mutani wawe,
 a tshi vha ^{Sundela} ~~o~~ mitani ya vhaime vha fu-
 makadzi. Magota na vha makadzi vha
 ri vha nga vhumbe ^{Rameano} ~~o~~ vhu hosi
 zwi fise zwa musanda a vha tsha
 do zwi wana. Eho, k mukololo uyo
 a mbo di kundwa vhu hosi nga mulandu
 wa mme wa a ndzimo.

Vhalwi vha hulu ndi musi a Mbodi na

Mutengaphuma a tshela kwa nwa nga
maanda. ~~Maanda~~ vha
sa tshatshangela, vha tshakomana
vha vho. Ramaano a shavhela
Ha Dombos ngeli sphi ha tshatshandwa, a
dzula hone o ~~tshatshandwa~~ ^{kubhatidya} nga khosi
munene wawe.

Magote othe a ima na Mbodi, nga
maanda vha tshakalani vha mu fisa
ngani
~~ngani~~ a vha mudibhulu wa ha
Mukhobolwane. Ndwana ya khulu, nge
Mutengaphuma a ya u tamba kla
la ha Tshihasa; hone naho zwozela
a si hone mukomana wawe aye
a vha e ~~mu~~ ^{munna} na vhubali.

Khangisa na Sintoni a vha ima
vhathe, hone vha si dhone tshaka
ya Mangwala. Ramaano Nelwhe
dori a ima na Mbodi. Tshimanga,
munwe wa vhekololo vha vha
vha vha tshi ima na Mbodi
vhubana nduwani yonayo ya muvanga,
Sikhwetha a o vha e muhali

wa mafumo. Ndi ene we a lwela Mbodi nga maanda u swika Muta- ngaphuma na ^aKhanga tshi shavhela kha Tshivhase na vhatshu vhave. Kha- nga a shavhela kha Sintsumule a ya fhandela kha la Tshifulani. Sundeni a fhandela kha la ~~la~~ kha Na Mandela; na ~~Muta~~ Mungaphuma a fhiwa shango la nga Tshivhase.

Shango la vha Damani vhatshu la do- vha la lala, Mbodi a vha ene khod yiso; aiwaa, ^{mudalo} wa dliwa.

Ku ppi ndi ene we a vha khosi ntawu ya u thoma kha vha-Jabakhuma. Hone o vha e munna wa Lidzwoodworoba wa thaha ndapfu. O vha e na mahlili mahlwane mahlwane.

Ke ngo vhusa tabifhinga ^{tshilapfu,} ~~tshilapfu,~~ o mbo di dzana a sango lalana!

Uhana vhave vha vha tuka vhe ~~o~~ a vha sia ndi: Ganyane, Tshimbiluni, Tshibevha ^{Mushanyani} na Makhuha. Tanghe lawe kha vhatuka ndi ^{Ganyane} ~~o~~ i fhatij

vhuhosi ho dybenwa nga Tshimbiluni, nge
 a vha^{ene} wa mudi ya vhucoma. U ho
 vuhosi a hongo vhangsa ha kloti
 awe ngauri magota othe na vhomakha-
 dzi vho pfana kha u vhumba ene
 Tshimbiluni; nahone vha kololo vho
 vha vha tsee vhatuku.

Mbodi o vha e muthu wawhudi, nge
 u vha o vha a sina vho zwithale, nahone
 a si na tshitalula kha vhalanda
 vha we. O vha a tshi pfana na
 vhefunzi. U pfana vho ho mu fisa
 misi ila Mavhuru a tshi lwa na
 mplepho kamabulana ~~na~~ ^{nga} mwaha wa 1898.

Mufunzi Weismann a tsviledze
 sa shango la Isakhuma, nge a
 tona dzidzigu tshena ngei masa-
 khani a shango. A vhudza Ma-
 dziwandila uri a songo lwa na
 ayo ma vhusu ngauri ^{vla} nga
 mu tshingafhadza, a ^{tshingafhadza} shang
 lame. Nardwa yeneyo ya mavhuru
 yo vha hone tshingafhadza tsha Mbodi.

Ndwana ya mavhuru iyo vha khulu
 ngei Dzanani, ~~mo~~ muranga phanda
 wa mavhuru o vha e Jombere.
 Mphaphu a kundwa, a shawhela ngei
 Ntshelole, mavhuru a dzhena ngei
 Hrus musanda wa Dzanani. Hrus
 pfi mavhuru o ti kona nge a vha na
 gannu iya khulu ye ya vha i pfi
 makhulu masindi. Ndi yone yaya
 tshinja shango la Venda, kathibi
 na vha Tonga na mag. Maguvhu
 na vha melonyu e a vha o ima na
 makhuwa. Sinthumule na Maemu
 na ~~whone~~ ^{Saphana} na whone vha ima na
 makhuwa vha thathoda Mphaphu.
 Thatu vhanghi vha shawhela ka
 Ishikhasa, hone ~~zwi si~~ ^{zwi si} vha thuse
 ngei vha ka Ishikhasa vha vha
 tangula dzithundu na vha vha
 yawee, tsha tou vha tshilila tshilulu
 ka la Dzanani; vha vha vha
 wa nga ndala nga vha mavhuru
 avha o vha o phiswa manwe o

une' na namusi wa pfi Muvhuyus
wa Bere. Dzimbidi nnyhi dza fa
nge dza vha di songo wana madi lwendoi
ulwa lwa mushawho vhubati ha
dizia. Uha wela seli ha vhembe vha
ya ngei masubini a vho makulu
warho, hu no pfi vhubwa.

Ndwa ya mavhuru yofhela, ~~wa~~
mbodi Madzibhandila a ~~ka~~
dzama. Vhubosi ha dzherwa nga
murwa usawe Ishimbiluni vhuba
ro no di zwa pfa.

U Makhuwa a vhuba vhatu
vhi vha luoha Sinthumule ngau'
Mphephu a nga si tcha dorha a vhuba.
Vhatu vha hana u luoha Sinthumule
na ~~barhona~~ Nesangani Dakhana. Ha di
itandu tchi rumiwa vhatu ngei
vhubwa vhi vha ise ziviluwa' ha
khasi yavho ye ya vha i tchi vha funa
ene Mphephu Ishilamulela-vhakalaha.
Nga rivaha wa 1899 ha vuba
ndwa ya mavhuru na maisimane.

Mphaphu a ~~...~~ hadindaka wa vha
 vhudze vhatu ^u ~~...~~ sa' farise mavhu-
 ru mndwani yenyaa. Ndi hone na nepha
 vhatu vha ~~tati~~ ^{tshi} ~~saba~~ hana u ^{paripa} ~~...~~
 mavhuu a tshi hwa na maisimane.

Paul Kruger, we a vha e khosi ya
 mavhuu a kundwa, a shavhela
 Europe o boa nga ~~...~~ Danakube.
 Mavhuu ha vha u kundwa hao; izwo
 ndi nga rivaba wa 1902.

Bulala, munna wa maisimane, a vhidza
 Mphaphu ngei vhuwisa, a da nae
 ngemo shangoni lawe. Uyo munna
 o vha e na vhubati na talitubhu.

Ndi ene ane' na naransi ra mu
 divha nga la uri Bulala-zonge-
 Metabangone. Ndi ene we a fhedza
 vha ~~...~~ vha vha vha vha ima na
 ma ~~...~~, nga maanda vhatonga
 vha Tshivawa vha vhubawa nga
 vhumfi, vhanwe vha da ha Mphaphu
 uri a vha ~~...~~ kuwhatedze, hone
 nge nge a vha muthu wa u lamulela

litshwa, vha tenda u vha da vha da
Mphephu, Sinthumde na Maemi na
vhone vha tenda u luvha mukomana
evavho, hore nga ^{vhuva} vha shanduka.

Vha Damani vha tenda u dooha u luvha
kholi yarho khulu, ene Mphephu.

U luvha tshenetshe tshifingo, u suika
namusi shango la Ishakhuma la vha
la mulalo. Mudi wa vha vha tshandi
vha Jesu wa hula, wa fhisa midi
yothe ya Berelini Misioni fhano Venda.
nga 1905. Mufunzi Mahatsini (Wesmann) a
tuwa, tshidzuloni tshawe ha da mufun-
zi Ch. Sonntag. Ndi ene we a f
lugisa magondo zwarhudi, a tevha na
ila miri ine na namusi ya vhone.

U luvha wa 1919 uyo mufunzi a vha
fana ngei Middelburg ha tsho ya u dala.
Ndi hore hu tshi da mufunzi wa hha
Luwimbi, S. Giesekke. Ndi ene we
a fhata tshidzuloni tshila tshikola tsho-
vudi. Na u a shuma nga maanda.

ho thusa vha-Da vha-Damani. Namisi
 tshikolo tsha vha-Da ~~ndi~~ tshone
 tshihulu kha zwithe zwa ngene thungo
 ka ya seruhle ya ~~Da~~ Danasifala. Thane
 vhashe vha funzwa u swika buquni
 ya VII. Vhadededi na vhadededikadi
 vho tengana namisi ndi II.

Tshedya tlo diana mirhengo na
 djindwa dya fhela, ndi tsha Ma Maboda.
 A hu tsha dijohelwa djindila nga ile
 misika ya kale; ho hu dijohelwa nga
 pfunzo ya maohafu mafungo a tshedya.

[Handwritten signature]

J. 340