

Appendix A. Supplementary data

The following are the Supplementary data to this article:

Stage 1



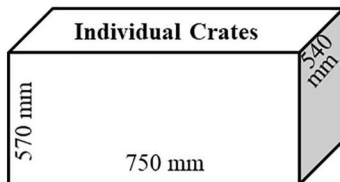
Room size: 5,7 x 3,7 m

- Temperature (19-22°C) and humidity (37%) kept constant
- Heat lamps available as additional heat sources
- A maximum of 16 crates within the larger room
- Crates are moved into an outside area each day to ensure individuals receive direct sunlight



Individual crates: 570 x 750 x 540 mm

- Each crate contains bedding, which is changed after every animal handling event
- View outside the crate is restricted
- Individuals are fed at predetermined times
- Fluids are provided through tubing of individuals when required
- Individuals are allowed short, supervised swims when approved by veterinary and management staff



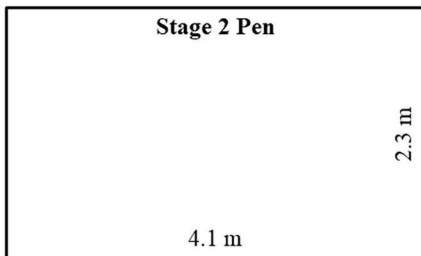
Supplementary figure 1. Stage 1

Stage 2



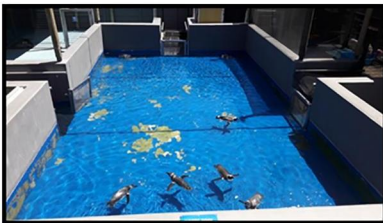
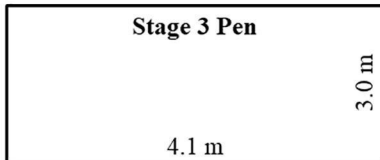
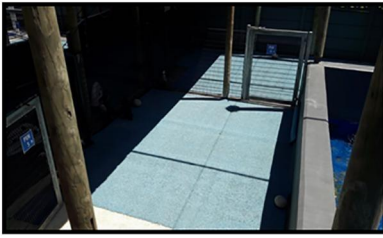
Pen size: 4.1 m x 2.3 m

- A maximum of 15 individuals can be kept in a pen
- Aluminium roof provides shade and cover from rain
- Infrared heat lamps available as additional heat sources
- Artificial burrows available for individual use
- Fencing allows for a view outside of the enclosure
- Matting allows for easy cleaning and disinfecting of pens
- Individuals are allowed access to the pool twice a day for supervised swims
- Fluids are provided through tubing or during allowed swims
- Individuals are fed at predetermined times



Supplementary figure 2. Stage 2

Stage 3



Pen size: 4.1 m x 2.3 m

- A maximum of 30 individuals are kept in a pen
- Aluminium roof provides shade and cover from rain
- Infrared heat lamps available as additional heat sources
- Fencing allows for a view outside of the enclosure
- Matting allows for easy cleaning and disinfecting of pens
- Individuals are allowed access to the pool throughout the day and night
- Access to fluids during swimming
- Individuals are fed at predetermined times

Supplementary figure 3. Stage 3