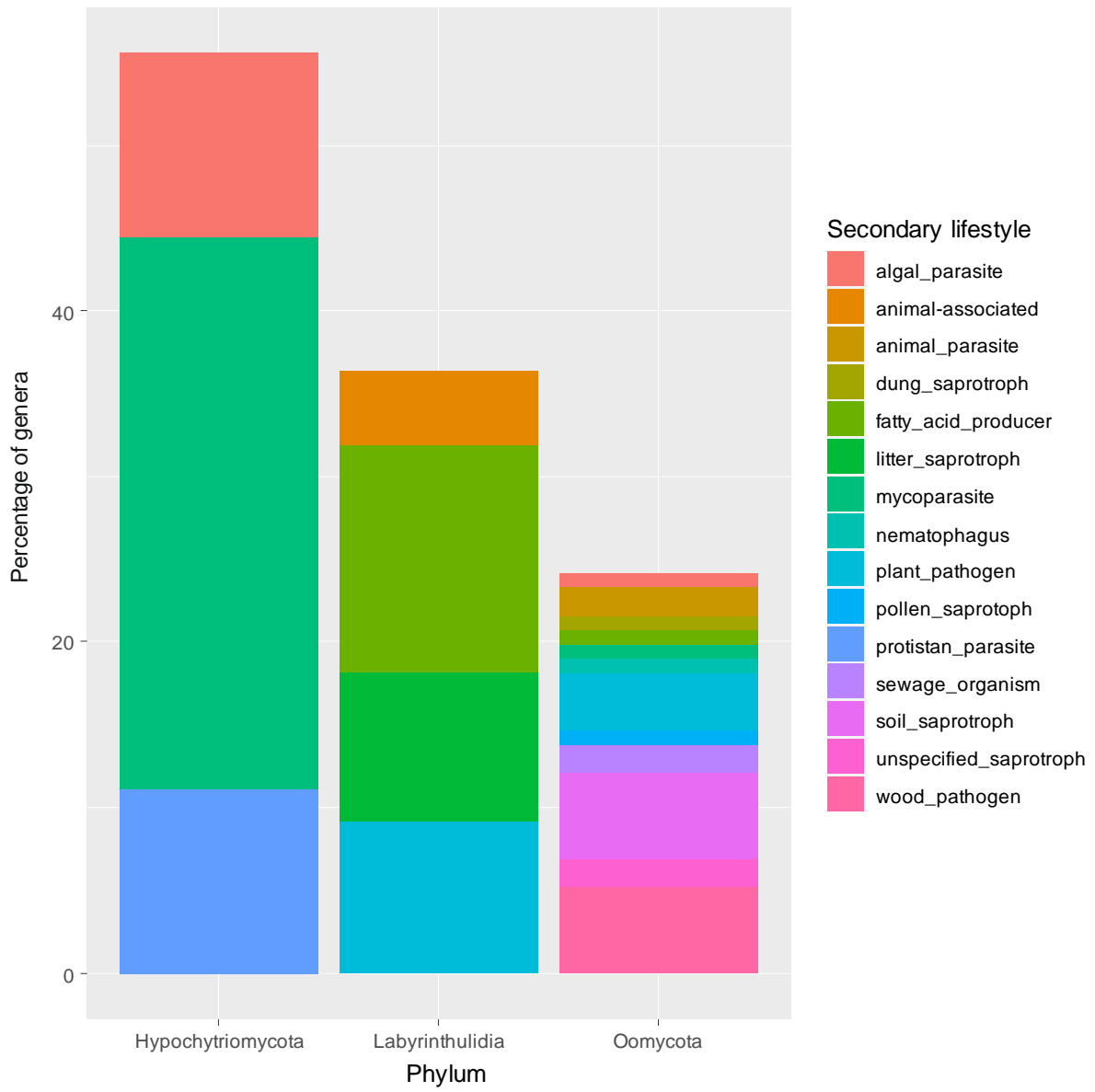
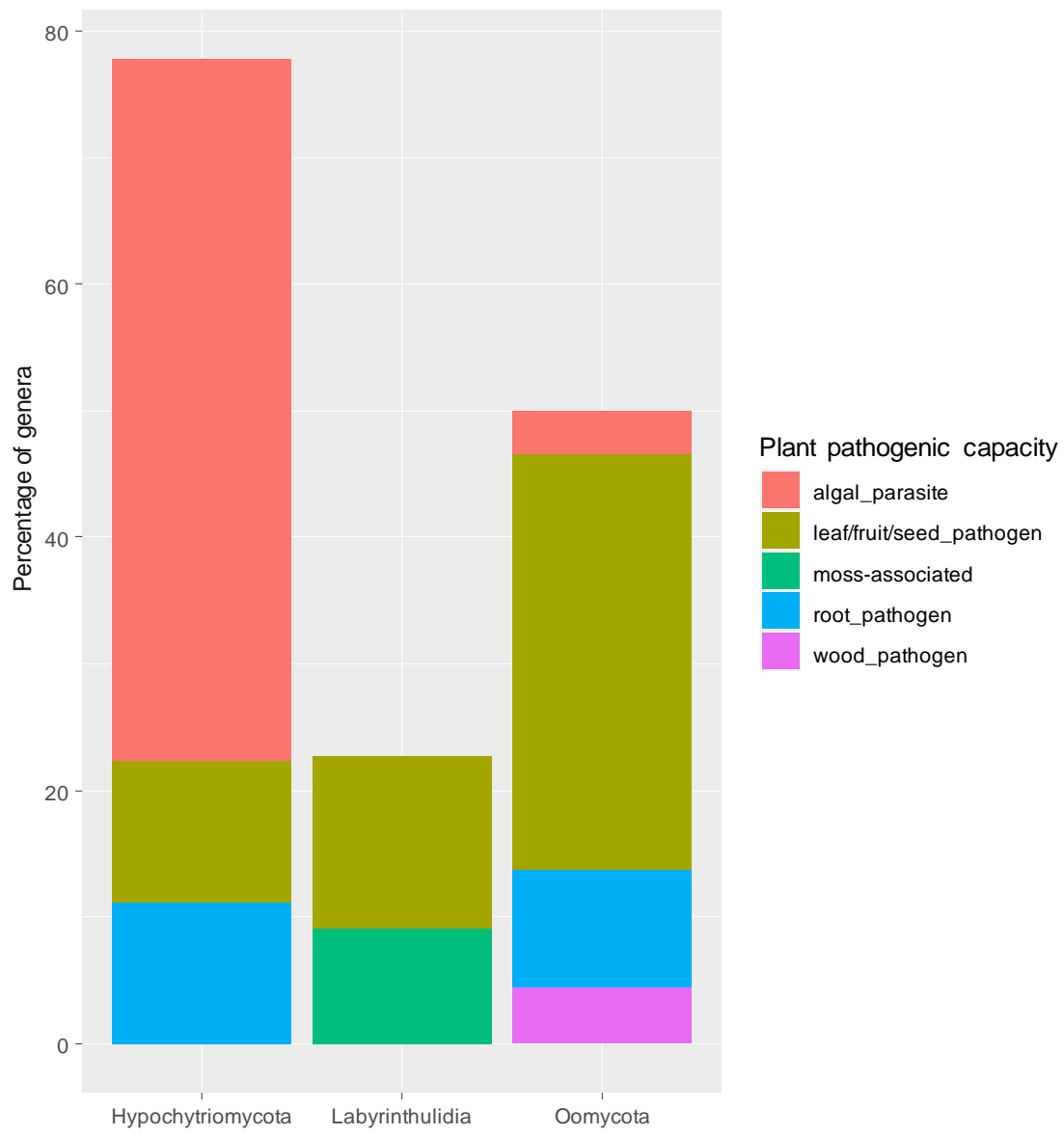




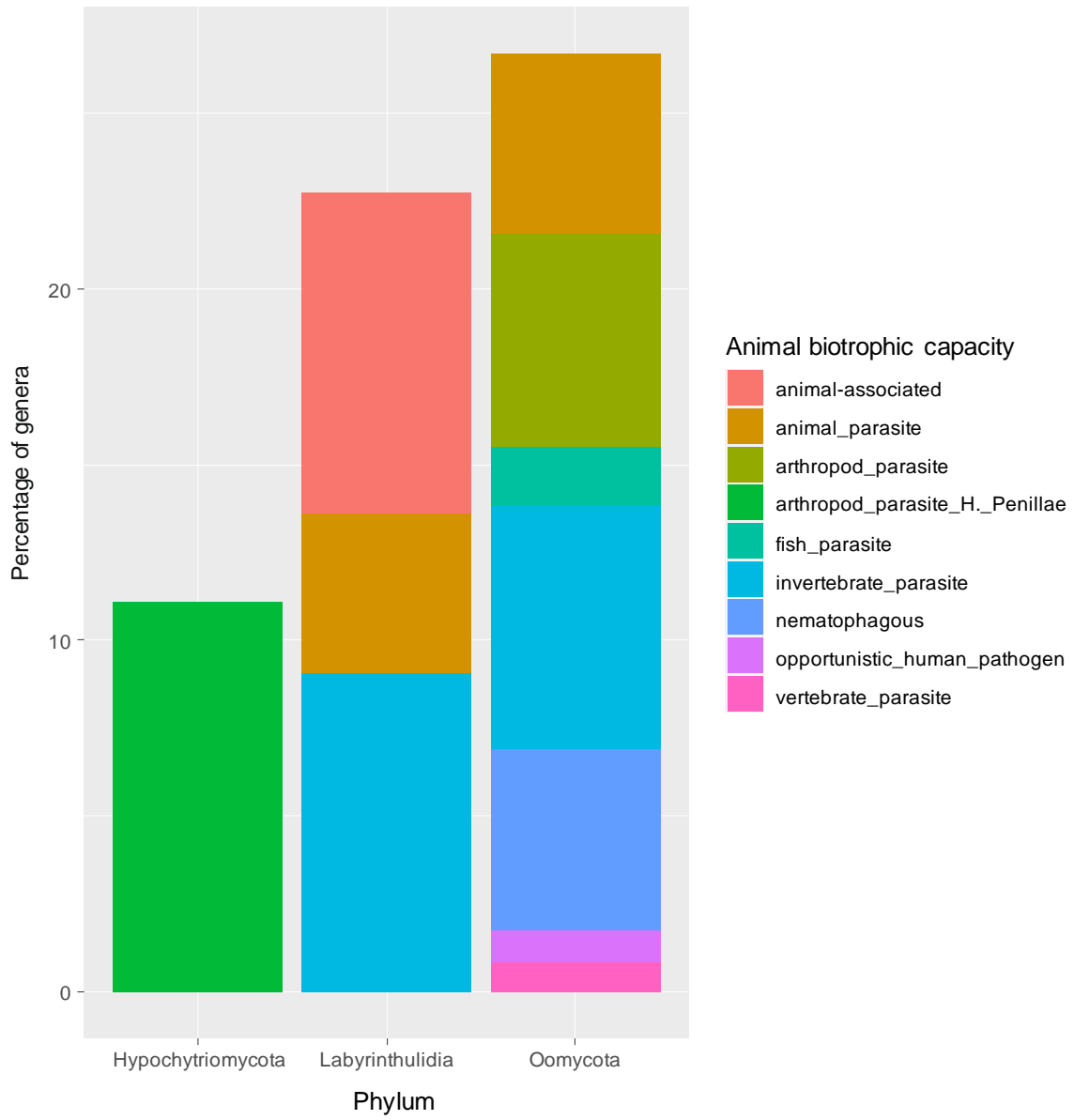
(b)



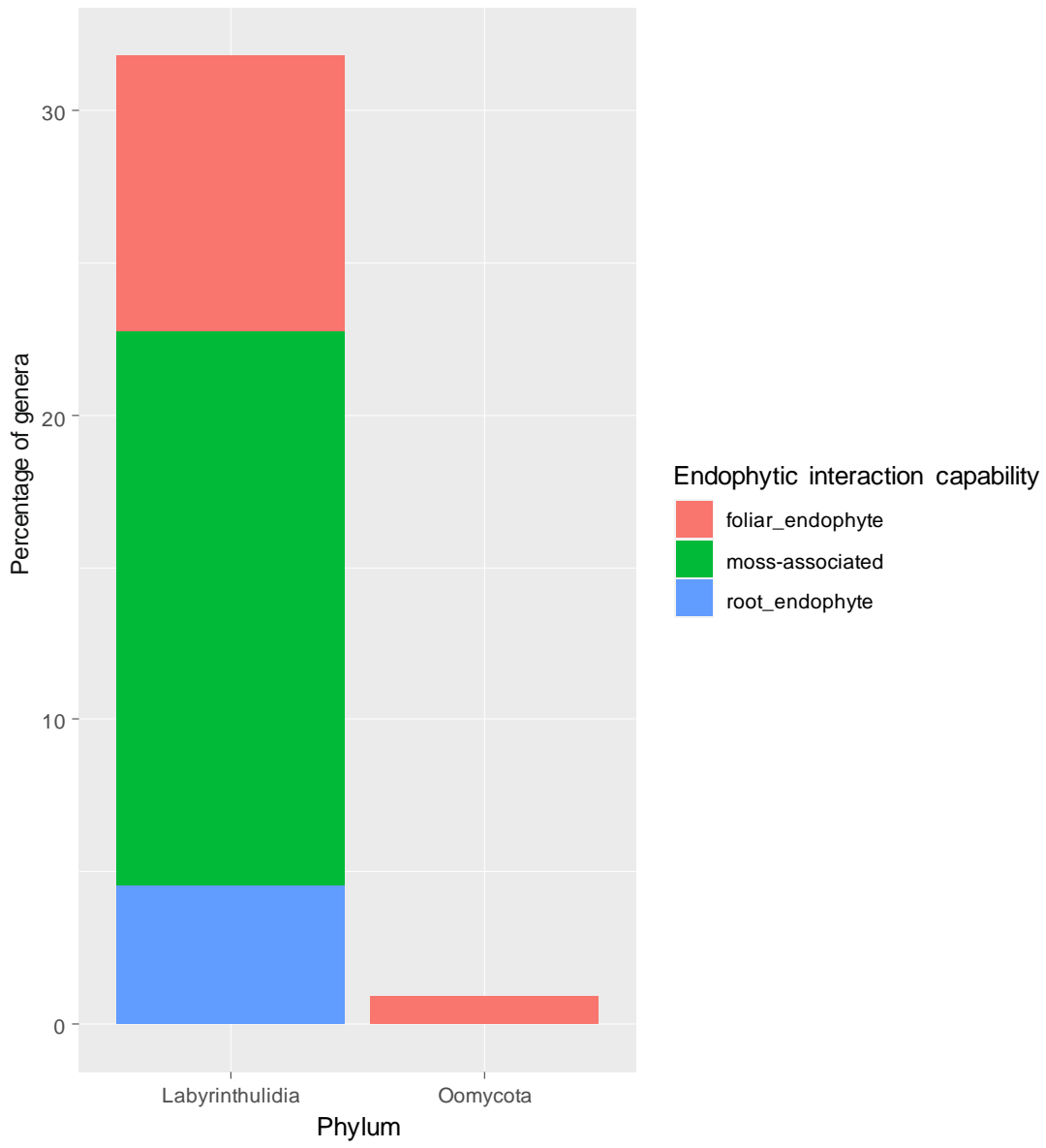
(c)



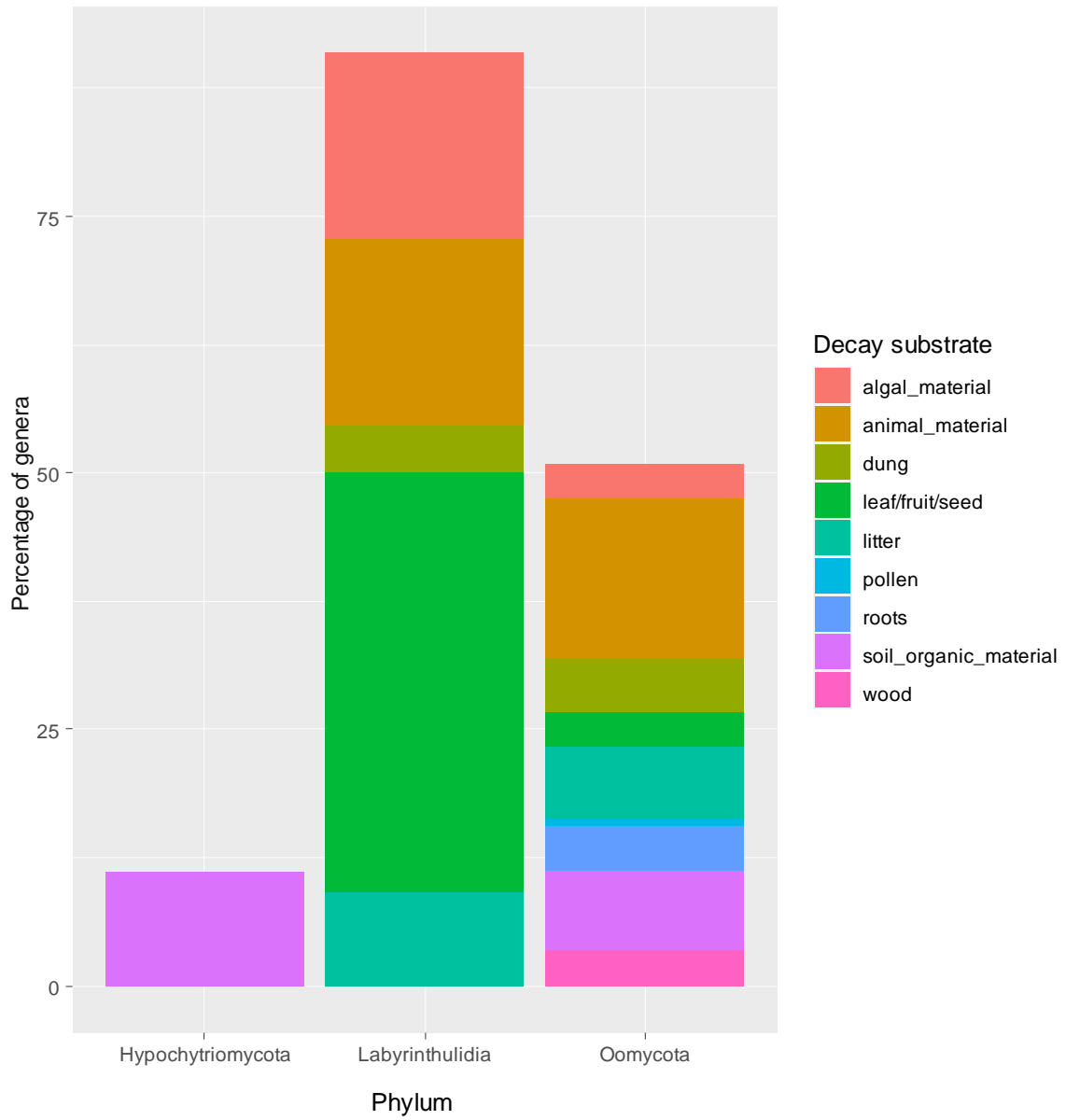
(d)



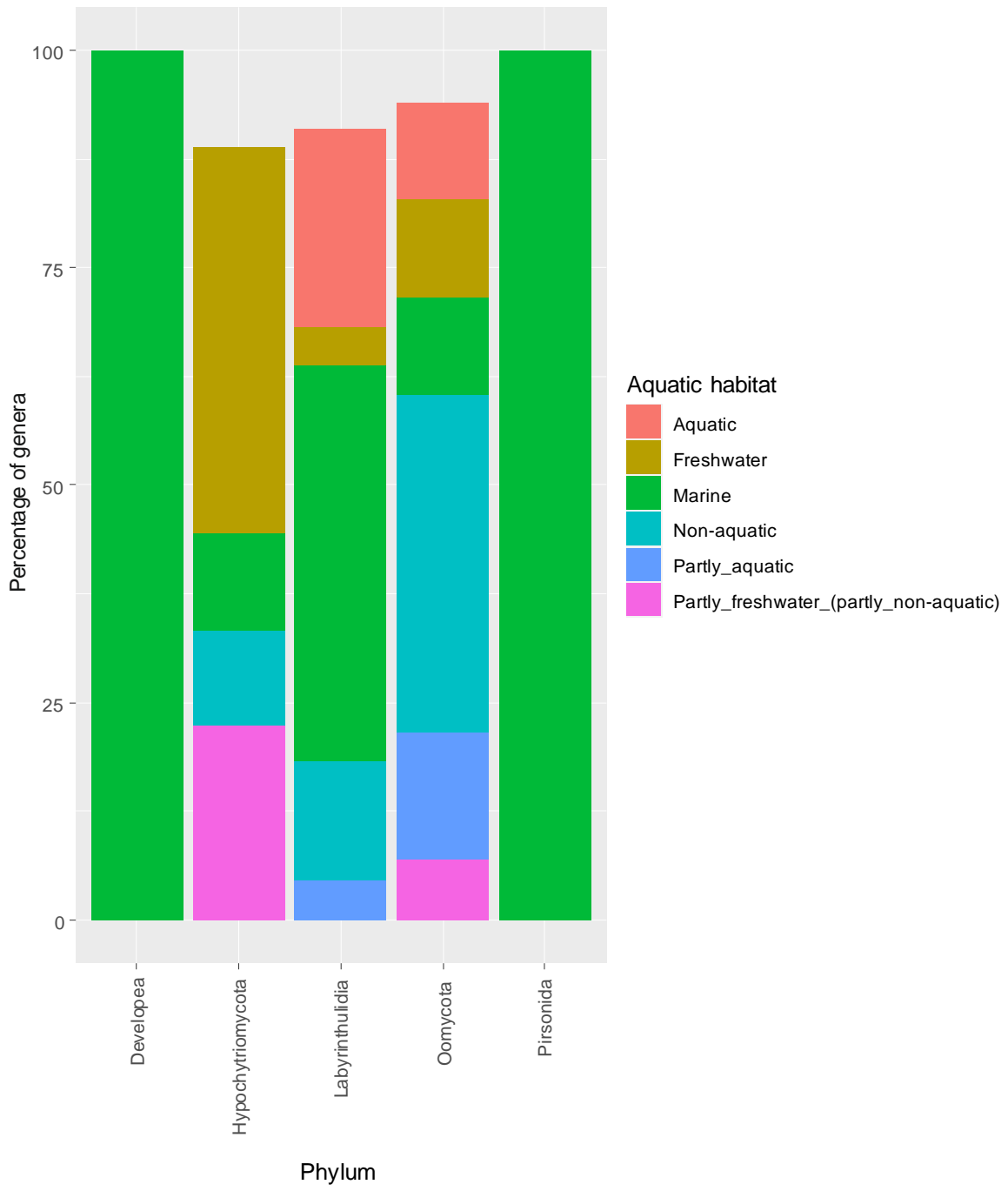
(e)



(f)



(g)



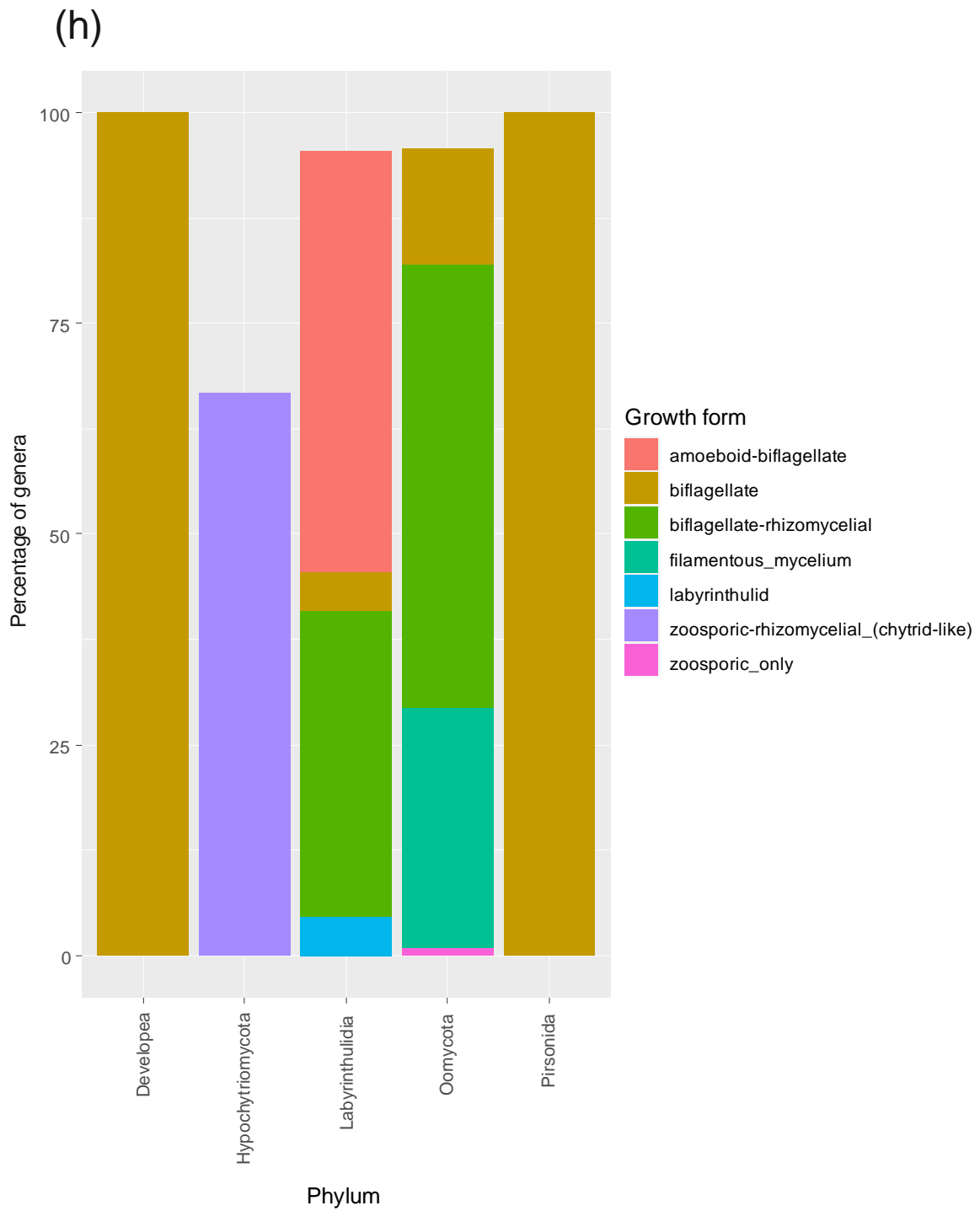


Fig S2. Percentage of Stramenopila genera by trait levels per Stramenopila phyla by: a) primary lifestyle, b) secondary lifestyle, c) plant pathogenic capacity, d) animal biotrophic capacity, e) endophytic interaction capacity, f) decay substrate, g) aquatic habitat and h) growth form.