



## EXPERIMENT No. S. 1602.—C. 893.

Date.	Time.	Source.	R.C.	R.P.	W.C.	L.	M.	N.	E.	B.	Remarks.
15/12/24			7-2	48	15,200	55	12	33			Gonderia infrequent.
15/12/24	Splenectomized.		6-9	35	12,800						P. bigem; Gonderia.
18/12/24	J.		7-8	41	18,400	36	13	50	1		P. bigem. and Gonderia frequent.
19/12/24			8-7	43	17,200	38	11	51			Contracted forms of P.; Gonderia frequent.
22/12/24			7-8	35	24,900						Gonderia; S.A.
24/12/24			6-7	35	17,400						Gonderia.
27/12/24			4-9	29	22,600	53	10	36	1		Gonderia.
29/12/24			3-8	22	14,000						Gonderia.
31/12/24			3-8	23	30,800	37	8	54	1		Gonderia frequent; A., J.
5/1/25			3-2	19	15,700	69	11	30			Gonderia frequent; anapl. rare; A.; S.P.
7/1/25			3-0	20	13,600					1	Gonderia frequent; anapl. rare; S.A.; J.B.
9/1/25			3-4	20	13,600	56	19	23	1		Gonderia frequent.
12/1/25			4-2	24	14,400	96	8	26			Gonderia less frequent; P. bigem rare; S.A.
14/1/25			4-4	24	12,000	54	12	31	2		Gonderia less frequent; S.A.
16/1/25			5-3	24	12,000						Gonderia less frequent; S.A.
19/1/25			4-6	25	12,000						Gonderia frequent; few anapl.; S.A.
21/1/25			5	25	11,300	65	9	20	3		Gonderia; S.A.
23/1/25			4-4	21	15,400	65	11	23	1		Gonderia; few anapl.
26/1/25			4-8	21	13,400	58	13	24	4		Gonderia; anapl. not infrequent.
28/1/25			5-2	22	12,300	64	8	24	4		Gonderia; few anapl.
30/1/25			3-8	22	13,100	90	13	23	4		Gonderia; anapl. not infrequent.
1/2/25			3-8	22	13,500	57	9	27	1		Gonderia; few anapl.
2/2/25			3-8	13	14,200	55	16	27			Gonderia; anapl. not infrequent.
4/2/25			3-8	22	15,400	55	13	32			Gonderia; few anapl.; S.A.
6/2/25			4-6	20	13,500						Gonderia; few anapl.; S.A.
11/2/25			4-0	20	10,600	49	6	45			G. mutans not frequent; S.A.
16/2/25			4-3	24	14,100	65	8	24	2	1	G. mutans not frequent; S.A.
23/2/25			5-9	24	18,600	62	11	23	4		Gonderia; anapl.; S.A.
3/3/25			6-4	27	14,000						Gonderia rare; A.
9/3/25			5-6	26	22,300						P. big. few; Anapl. and Gond. not infrequent; A.
17/3/25			5-7	26	17,500						Anapl. few; Gond. not infrequent; S.A.
26/3/25			6-3	28	19,900						Anapl. few; Gond. not infrequent; A.
1/4/25			5-7	31	21,100						Anapl. few; Gond. not infrequent; S.A.
22/4/25			6-6	33	27,100						Anapl. few; Gond. not infrequent; A.



## EXPERIMENT NO. S. 1602.—C. 711.

Date.	Time.	Source.	R.C.	R.P.	W.C.	L.	M.	N.	E.	B.	Remarks.
22/3/24	9 a.m.		7.9	32	14,000	68	7	24	4		V. S.A.
27/3/24	9 a.m.		8.4	33	17,500	65	7	23			
29/3/24	3 P.M.	Splenectomized	7.8	38	12,200	50	13	37	1		
31/3/24			7.7	37	12,200	52	11	36			
7/4/24			6.7	32	12,600	40	11	49			
7/4/24			6.6	30	9,500	57	9	34			V. S.A.
11/4/24			6.6	30	7,600	63	4	31	2		
17/4/24			4.2	22	11,000	62	11	25	1		
23/4/24			4.8	22	15,000	52	14	29	1		S.A.
30/4/24			4.7	23	12,600	54	14	29	2		A.
5/5/24			5.5	24	12,600	54	16	26	1		S.A.
8/5/24			5.5	24	12,600	70	8	21	1		
12/5/24			5.4	24	11,100	60	14	24	1		
13/5/24			5.5	24	11,000	67	12	30	1		
19/5/24			4.7	24	15,500	52	12	34	2		Anapl. centrale frequent; S.A.
22/5/24			4.5	23	12,400	71	14	15			S.A.; anapl. centrale frequent.
2/6/24			5.5	25	12,400	78	7	15			Anapl. rare; A.
5/6/24			5.5	30	14,300	74	5	20			S.A.
10/6/24			6.5	30	14,300	68	5	22	1		V. S.A.; few anapl.
16/6/24			6.4	33	15,900	75	11	19	3		Anapl. very rare; S.A.
19/6/24			5.6	28	15,200	63	16	20	1		Anapl.; S.A.
28/6/24			5.1	25	17,700	68	7	25			Anapl.; S.A.
2/7/24			6.6	30	19,000	79	4	16	1		Anapl.
11/7/24			6.6	30	18,900	71	4	20	2		Anapl.; S.A.
14/7/24			4.8	26	18,700	73	14	12	1		Anapl. not infrequent.
27/7/24			5.6	25	18,000	62	11	26	1		Anapl. very rare.
5/8/24			5.4	24	16,700	79	4	17			
12/8/24			6.2	25	21,700	55	11	34			
3/9/24			5.6	25							
12/9/24			5.6	25							



## EXPERIMENT NO. S. 1602.—C. 758.

Date.	Time.	Source.	R.C.	R.P.	W.C.	L.	M.	N.	E.	B.	Remarks.		
3/6/25	Splenoctomized.		10	39	13,000	70	10	18	2				
6/6/25			9.9	44	17,800	52	12	35	35	1			
9/6/25			11.8	46	11,300	62	11	27	27				
16/6/25													
18/6/25			11.8	40	22,600	61	6	6	31	1	1	Anapl. centrale not infrequent.	
19/6/25			10.5	40	23,300	68	7	7	25	2	1	Anapl. centrale rare; P. bigem. very rare.	
20/6/25			7.4	33	30,200	51	13	13	36			Anapl. centrale; P. bigem rare.	
23/6/25			4.7	25	11,100	68	14	14	18			Anapl. frequent; P. bigem. rare.	
25/6/25			5.9	22	9,300	55	22	22	12				
26/6/25			5.1	22	11,700	30	30	30	12			23	Anapl. centrale frequent; S.A.
			5.1	18	10,000	34	46	46	1			20	
			4.7	19	14,200	50	29	29	4			17	

Myelocytes

## EXPERIMENT NO. S. 1602.—C. 1027.

Date.	Time.	Source.	R.C.	R.P.	W.C.	L.	M.	N.	E.	B.	Remarks.
24/12/24	9 a.m.	J. Splenecto mized.	7.7	39	9,800	67	9	22	2	1	Gonderia fairly frequent.
24/12/24	9 a.m.		4.7	30	10,500	38	12	47	2	1	P. bigem. rare; gond. very frequent.
27/12/24	11 a.m.										
28/12/24	9 a.m.		4.6	25	8,800	53	18	22	6	1	Gond. anapl. marginale; A.
29/12/24	9 a.m.		5.2	24	9,900	36	18	34	8	4	Gonderia frequent.
31/12/24	9 a.m.		5.8	25	6,200	57	11	28	4		Gond.; anapl.; S.A.
1/1/25	9 a.m.		3.6	20	9,900	52	25	17	6		Anapl.; frequent; gond. frequent; A.
6/1/25			3.3	18	9,800	29	42	23	4	2	Anapl. rare; gond. freq.; few piropl.
7/1/25			2.2	13	13,000	48	27	24	1		Anapl. rare; piropl. not rare.
9/1/25			1.3	10	11,500	31	23	44	2		P. bigem. frequent; piropl. not rare; N.
10/1/25			1.6	9	15,200	30	16	54			Gond.; A.; SP.; E.; N.
14/1/25			1.9	17	16,500	30	15	29			Gond.; A.; J.B.
16/1/25			2.0	20	7,500	56	11	25			Gond.; A.; J.B.
19/1/25			3.1	18	10,600	62	11	25			Gond.; piropl. rare; S.A.
23/1/25			3.7	21	8,700	53	17	23			
26/1/25			3.9	17	15,100	58	21	16			
28/1/25			4.2	19	9,100	60	21	16			
30/1/25			4.4	19	11,600	64	18	13			
2/2/25			3.4	19	14,200	67	30	12			
4/2/25			4.3	17	11,600	52	21	15			
6/2/25			3.4	19	11,900	49	26	25			
11/2/25			3.7	18	10,700	47	24	28			
16/2/25			2.9	16	10,700	64	26	8			
23/2/25			2.2	14	10,400	51	29	10			
3/3/25			3.3	19	7,400	60	13	26			
9/3/25			2.8	19	12,400	53	16	30			
17/3/25			2.7	20	11,100						
26/3/25			3.3	20	12,800	50					
1/4/25			3.7	20	9,800						
22/4/25			3.3	17	14,500	45	23	30		2	Few anapl.; gond. not infrequent; few P. bigem.; A.

## EXPERIMENT NO. S. 1602.—C. 1034.

Date.	Time.	Source.	R.C.	R.P.	W.C.	L.	M.	N.	E.	B.	Remarks.
20/1/25	9 a.m.	J. Splenectomized. J.	8.7	49	8,600	77	6	12	5		Gond. not infrequent.
20/1/25	9 a.m.		6.6	37	14,200	51	6	38	4	1	Gond. ; few P. bigem.
24/1/25			7.8	40	10,100						Gond. ; few P. bigem.
25/1/25											Gond. ; few P. bigem. ; few anapl. marginal.
26/1/25			6.9	30	9,100	68	22	7	3		Gond. ; few P. bigem. ; S.A.
28/1/25			5.9	29	14,100	66	20	10	4		Gond. ; few anapl. ; S.A.
30/1/25			5.7	29	10,400	53	22	23	2		Gond. frequent ; few anapl. ; few P. bigem.
31/1/25					11,200						Gond. frequent.
1/2/25											Gondelia ; A.
2/2/25			4.3	17	11,900	63	10	27	2		Gondelia frequent ; anaplasma rare.
4/2/25			3.2	16	13,000	52	18	28	1		Gondelia very frequent ; anaplasma rare ; piropl. very rare ; A. ; S.P.
6/2/25			2.3	9	13,500	53	16	29			Gondelia very frequent ; S.A.
11/2/25			1.7	8	12,400	69	14	19			Gondelia very frequent ; S.A.
13/2/25			1.6	8	10,000	59	15	26			Gondelia rare ; anaplasma rare ; S.A.
16/2/25			1.3	10	9,600	57	20	23			Gondelia frequent.
23/2/25			1.5	10	8,600	59	34	27			Gondelia frequent.
3/3/25			2.7	15	9,100	76	11	13			Gondelia not frequent ; S.A.
9/3/25			2.6	14	14,700						Gondelia frequent ; P. bigem very rare ; S.A.
17/3/25			2.8	25	16,300						Gondelia frequent.
26/3/25			2.7	20	14,700	50	37	13	2		Gondelia frequent.
1/4/25			2.8	19	6,800	65	18	15			Gondelia not frequent ; S.A.
22/4/25			3.11	16	15,900						Gondelia not frequent ; S.A.



## EXPERIMENT NO. S. 1602.—SHEEP 7369.

Date.	Time.	Source.	R.C.	R.P.	W.C.	L.	M.	N.	E.	B.	Remarks.		
28/2/24	Splenoctomized.					39	5	51	5		<p>Marked cells; monocytes.</p> <p>A. Anaplasma; path. lymphocytes.</p> <p>Anaplasma very frequent, in some cells as many as four; erythrophagocytosis; P.; A.</p> <p>Anaplasma very frequent; A.; P.; P. D.; E.; N.; difficult to distinguish between certain forms of monocytes and large lymphocytes.</p> <p>Neutrophils practically absent; cells dominating the picture; large, strong basophilic cytoplasm; nucleus monocytic characters, except stained intensely. Are these stern cells?</p>		
3/2/24						36	2	60	3				1
7/3/24						41	8	47	3				
10/3/24						24	31	45					
13/3/24						15	47	38					
18/3/24	9 a.m.	J.	2	± 10	35,400								
19/3/24	4.15 p.m.	J. V.C.	2-4	± 10	37,200	28	27	35					

## EXPERIMENT NO. S. 1602.—SHEEP 7443.

Date.	Time.	Source.	R.C.	R.P.	W.C.	L.	M.	N.	E.	B.	Remarks.
27/2/24	9 a.m.	J.				56	2	36	6		
28/2/24	Splenectomized.					17	3	80			
29/2/24						39	3	51	7		
3/3/24						30	4	65		1	
7/3/24						38	8	51	1	2	
10/3/24						29	7	64			
13/3/24						18	20	60	1	1	
18/3/24	10 a.m.		4.3	19	17,400	23	20	57	1	1	
19/3/24			3.2	10	19,300	28	25	45	1	1	
20/3/24											Anaplasma; S.A. Anaplasma frequent; A.; S.P.; N. Anaplasma frequent. Anaplasma frequent; A.; P.; N.; mono- cytes with erythroplag.; some monocytes with large granules.

## EXPERIMENT NO. S. 1602.—SHEEP 8464.

Date.	Time.	Source.	R.C.	R.P.	W.C.	L.j	M.	N.	E.	B.	Remarks.
15/5/24	9 a.m.	J.	11.8	44	8,500	43	7	50			
15/5/24	Splenectomized.			45	12,100	42	7	50	1		
19/5/24			13.1	46	12,100	41	13	46			
21/5/24			11.2	44	13,400	27	11	62			
26/5/24			11.8	44	13,400	49	5	44	1	1	
5/6/24			12.2	45	15,800	61	4	33	2		
17/6/24			11.6	40	12,400						

## EXPERIMENT NO. 1655.—SHEEP 8464.

Date.	Time.	Source.	R.C.	R.P.	W.C.	L.	M.	N.	E.	B.	Remarks.
8/7/24											
27/8/24		Intrajugularly, 20 c.c.,	blood C.	894 (anaplasma centrale).	16,600	63	3	32	2		Negative.
1/9/24			12								
9/9/24		Intrajugularly, 20 c.c.,	blood C.	917 (A. marginale).	17,900	68	3	30	2		Negative.
10/9/24			10-1								
19/9/24			8-7		12,200	74	6	20			Negative.
20/9/24											Negative.
21/9/24		Died of Heartwater.									Negative.

## EXPERIMENT NO. S. 1602.—SHEEP 8457.

Date.	Time.	Source.	R.C.	R.P.	W.C.	L.	M.	N.	E.	B.	Remarks.
14/5/24											
15/5/24	9 a.m.	J.	12-1	42	6,300	54	5	38	1	2	
17/5/24	Splenectomized.		12	44	17,000	17	3	79	2		
21/5/24	9 a.m.	J.	12-8	44	11,100	36	5	55	2	1	
5/6/24			13	43	11,100	35	7	57	1		
12/6/24			14-5	44	9,000	30	3	67	3		
19/6/24			14-6	49	6,200	46	10	39	3	2	
26/6/24			14	48	9,500	48	3	45	3	1	

## EXPERIMENT NO. 1613.—SHEEP 8457.

Date.	Time.	Source.	R.C.	R.P.	W.C.	L.	M.	N.	E.	B.	Remarks.
30/6/24	2 p.m.	Intrajugularly	20 c.c.		58	10	30		2	2	Anaplasma rare.
1/7/24	9 a.m.	J.	18.2	44	5,200	14	40		2		Anaplasma rare; S.A.; S.P.
7/7/24			8.1	30	9,200	42					Anaplasma rare; A.; S.P.; S.P.D.
10/7/24				23	18,000	54	7		2	1	Granules in lymphocytes and monocytes;
11/7/24			6.4	21	17,000	53	18		4	1	A.; S.P.D.; P.
12/7/24			6.1				8			1	Anaplasma very rare; A.; P.
14/7/24			6.1	24	11,200	61	5		1		Anaplasma more frequent; A.; P.
16/7/24			4.5	21	11,800	60	9		2	1	Anaplasma rare; A.; S.P.D.; S.P.
18/7/24			3.9	20	9,900	50	9		1	1	A.; P.; P.D.; normoblasts; J.B.
21/7/24			3.6	21	18,100	34	27		1	0	A.; P.; P.D.; normoblasts; J.B.; erythrocytosis.
22/7/24							24		1	1	Erythroblasts; normoblasts; orthrophagocytosis.
23/7/24			2.9	15	35,100	40	24		1	1	Erythroblasts; normoblasts.
24/7/24			1.9	13	28,500	41	26		4		Erythroblasts; normoblasts.
25/7/24			2.4	13	20,600	28	38		3		A.; normoblasts frequent; J.B. frequent.
27/7/24			2	15	9,200	53	12		1		Acute anaemia; normoblasts frequent; J.R. frequent.
29/7/24			4.3	23	6,100	61	9		2		J.B. not infrequent; smaller forms.
1/8/24			4.7	25	6,700	70	13				S.A.; J.B. not infrequent; normoblasts rare.
6/8/24			7.1	26	6,600	62	14				Anaplasma more frequent; A.; J.B. rare.
11/8/24			6.1	25	23,000	68	14				Anaplasma more frequent; A.; J.B. rare.
15/8/24			4.8	18	32,400	47	16				Anaplasma less frequent; A.; E.; N.;
18/8/24			2.5	7							frequent erythrocytosis.
19/8/24	9 a.m.	J.	2.1	8	31,700	44	15			1	A.; S.P.; N.; J.B.
21/8/24			2.8	10	13,000	40	30				A.; S.P.; S.P.D.; J.B.
25/8/24			3.7	24	7,100	46	10				Anaplasma rare; A.; P.; J.B. frequent.
28/8/24			5.9	21	5,800	58	9		3	1	Anaplasma not rare; few J.B.; S.A.
3/9/24			5.9	21	15,000	62	7		1		Anaplasma not rare; A.; P.
5/9/24			6.1	22	11,600	54	4				Anaplasma not rare; A.; P.; N. rare.
11/9/24			3.7	20	10,700	53	1			1	Anaplasma not rare; A.; P.; J.B. rare.
15/9/24			5.6	23	9,800	52	3				Anaplasma not rare; S.A.
16/9/24		J.	4.9	17	5,200	76	4		1	1	Anaplasma not rare; S.A.
		V.C.	5.6	19	17,700	68	8				Anaplasma not rare; S.A.
		V.C. (2)			17,900	66	8				Anaplasma not rare; S.A.
		V.P.			18,200	73	18				Anaplasma not rare; S.A.
		Aorta			17,100	67	7				Anaplasma not rare; S.A.
			6.4	24							
			5.4	22							

## EXPERIMENT NO. S. 1602.—SHEEP 8456.

Date.	Time.	Source.	R.C.	R.P.	W.C.	L.	M.	N.	E.	B.	Remarks.
14/5/24	9 a.m.		14.1	41	5,900	56	6	37	2	1	
15/5/24	Splenectomized.		14.9	47	17,100	17	9	72	2		
17/5/24	J.		14	44	8,400	35	6	56	3	1	
23/5/24			12	42	13,500	34	2	63	1		
27/5/24			12	42	5,600	45	5	45	5		
15/6/24			13.6	42	10,500	41	10	49	3	1	
12/6/24			14.9	40	7,900	50	5	42	3	1	
19/6/24			12.1	40	8,400	48	4	46	1		
26/6/24											

## EXPERIMENT NO. S. 1613.—SHEEP 8456.

Date.	Time.	Source.	R.C.	R.P.	W.C.	L.	M.	N.	E.	B.	Remarks.
26/6/24	3 p.m.	Injected Intrajugularly, 20 c.c.,	12	43	blood Sheep S456.	44	8	57	1		
30/6/24			7.8	25	5,700	42	14	44			Anaplasma rare.
2/7/24			2.2	± 8	11,100	41	15	43			Anaplasma not frequent.
7/7/24			1.53	± 8	38,900	31	26	42		1	Anaplasma frequent.
9/7/24						{ 32	23	42			Anaplasma A.; P.D.; P.; normoblasts.
10/7/24						{ 37	25	45			Anaplasma A.; P.D.; P.; erythropha-
11/7/24	9 a.m.	J.	1.13	± 6	34,400		16	44		1	gocytosis.
		V.P.	1.16	± 6	33,200	{ 39	20	44		1	Anaplasma A.; P.D.; P.; erythropha-
		V.C.	1.13	± 6	34,200	{ 30	20	48		2	gocytosis.
		Aorta		± 6	35,800	36	20	42		2	
						41	17	41		1	









## EXPERIMENT NO. S. 1613.—SHEEP 8458.

Date.	Time.	Source.	R.C.	R.P.	W.C.	L.	M.	N.	E.	B.	Remarks.
24/4/24	9 a.m.	Intrajugularly	10 c.c.	blood,	8433	59	2	37			
24/4/24		J.	9.1	34	8,700	23	8	66	2	1	
29/4/24			7.9	34	6,300	24	4	68	3	1	
5/5/24			5.7	30	13,000	33	17	44	5	1	Anaplasma very rare; S.A.; S.P.; S.P.D.
12/5/24				32*		36	10	51	3		Anaplasma rare; S.A.; S.P.; S.P.D.
13/5/24				30†	13,400	36	9	48	2		Anaplasma not infrequent; S.A.; S.P.; S.P.D.
16/5/24				29†	11,800	41	11	54	6		Anaplasma frequent; P.; P.D.; N.
20/5/24			3.6	20	15,400	39	8	34	3		Anaplasma frequent; P.; P.D.; N.
26/5/24			4.5	25†	8,900	55	5	38	2		Anaplasma rare; S.A.
4/6/24			7.3	35	10,200	54	4	36	6		Anaplasma rare; S.A.
10/6/24			7.9	29	6,600	49	4	43	5		Anaplasma rare; S.A.
17/6/24			6.9	30†	12,200	40	7	47	2	4	Anaplasma rare; S.A.
21/6/24			7.8	34	11,900	63	9	21	7		Anaplasma very rare.
25/6/24			7.5	33	7,900	56	3	30	10	1	
2/7/24			7.9	31	11,400	56	3	43	4	2	
28/7/24			8.5	35	10,700	50	7	24	7		
12/8/24			8.5	38	9,000	60	3	42	6		
26/8/24			10.7	31	10,900	48	8	45	5		
15/10/24			9.3	30	15,000	42	1	35	12	1	
30/10/24			10	35	10,200	51	1	35	4		
5/11/24			11.5	40	8,100	64	1	31	4		

\* Erythrocytes agglutinated.

† Agglutinated.

‡ Partly agglutinated.





## EXPERIMENT NO. S. 1613.—SHEEP 8463.

Date.	Time.	Source.	R.C.	R.P.	W.C.	L.	M.	N.	E.	B.	Remarks.
21/5/24			13.2	46	10,700	51	6	43			
21/5/24		Intrajugularly	10 c.c.	blood, Sheep 8458	(o vine anaplasmosis).						
30/5/24											Anaplasma not rare.
4/6/24			12.4	42	7,400	57	3	40			Anaplasma frequent.
9/6/24			10	42	11,800	53	15	32			Anaplasma frequent; A.P.; P.D.
13/6/24			2.2	± 7	10,500	13	9	28			Anaplasma less frequent; A.; P.; P.D.; N.; J.B. (all stages).
14/6/24		Killed for pathology.									

## EXPERIMENT NO. S. 1613.—SHEEP 8432.

Date.	Time.	Source.	R.C.	R.P.	W.C.	L.	M.	N.	E.	B.	Remarks.
5/4/24											
6/4/24											
12/4/24	9 a.m.		Intrajugularly	20 c.c.	blood, Sheep 8434.						
15/4/24			11.4	40	9,900	31	3	64	2		
22/4/24			9.6	31	11,200	48	7	45			
23/4/24			10.5	35	8,500	65	4	30	1		
26/4/24			6.8	27	5,900	65	12	18	3	2	Anaplasma rare.
29/4/24			3.9	20	4,000	48	20	26	4	2	Anaplasma rare; S.A.; S.P.
30/4/24	9 a.m.	J.	4.4	22	8,700	53	7	36	4		Anaplasma rare; S.A.; S.P.
2/5/24	2 p.m.	Killed for pathology.	3.7	19	7,900	44	11	42	3		Anaplasma not infrequent.
											Anaplasma rare; A.; P.; P.D.; N.



Date.	Time.	Source.	R.C.	R.P.	W.C.	L.	M.	N.	E.	B.	Remarks.
3/8/24		J.	3-5	16	8,700	50	13	37			Anaplasma frequent; P.D.; P.; A.
5/8/24		J.	3-3	19	5,700	71	5	24			Anaplasma less frequent; A.; P.; P.D.
7/8/24			4-6	21							Anaplasma less frequent; Gonderia rare; J.B.
11/8/24											Anaplasma rare; S.A.
15/8/24			6-1	23	6,900	53	4	43			Anaplasma rare; Gonderia rare; S.A.
19/8/24			6-1	25	7,200	55	2	42	1		Gonderia rare; S.A.
22/8/24			6-2	24	4,900	55	2	42			Gonderia rare; S.A.
26/8/24			6-8	25							Gonderia rare; S.A.
3/9/24			6-7	24	6,900	54	5	40	1		Gonderia rare; S.A.
5/9/24			6-7	23	9,300	30	8	60			Gonderia rare; Anaplasma rare; A.
11/9/24			6-1	26	9,300	57	3	39	0	1	Gonderia rare; Anaplasma rare; S.A.; J.B.
17/9/24			8-1	26							Gonderia rare; Anaplasma rare; S.A.
22/9/24			8-2	28	7,600	55	4	40	0	1	Gonderia rare; Anaplasma rare; S.A.
29/9/24			8-2	26	10,600	44	10	36			Gonderia rare; Anaplasma not rare; S.A.
1/10/24			6-2	20	8,700	50	8	42			Gonderia rare; Anaplasma frequent; S.A.; J.B.
3/10/24			7	23	7,800	50	12	38			Gonderia rare; Anaplasma frequent; S.A.; J.B.
7/10/24			5-8	20	11,000	50	12	38			Gonderia rare; Anaplasma less frequent; S.A.
9/10/24			6	20	9,500	60	2	30	0	2	Anaplasma not rare; S.A.; J.B.
14/10/24			6-6	21	12,400	59	5	36			Anaplasma few; Gonderia few; J.B.
16/10/24			6-6	20	7,400	61	8	30	1		Anaplasma not infrequent; S.A.
21/10/24			5-6	21	7,700	60	8	31	1	1	Anaplasma not infrequent; Gonderia rare; S.A.; J.B.
23/10/24			5-6	22	10,800	47	1	50	1		Anaplasma not infrequent; Gonderia rare; S.A.; J.B.
28/10/24			6-3	25	10,200	44	5	50	1		Anaplasma not infrequent; Gonderia rare; S.A.; J.B.
4/11/24			7	25	8,400	57	9	32	0	2	Anaplasma not infrequent; Gonderia rare; S.A.; J.B.
7/11/24			6-4	21	14,100	67	6	26	1		Anaplasma not rare; S.A.
11/11/24			6-4	23	11,100	47	4	48	0	1	Anaplasma not rare; S.A.
14/11/24			5-4	24	9,800	60	5	35			S.A.
18/11/24			5-8	26	11,700	67	3	30			Anaplasma and Gonderia not infrequent; S.A.
28/11/24			6-6	26	6,900	72	3	25			Anaplasma and Gonderia rare.
1/12/24			6-4	25	7,600	60	9	30	1		Anaplasma and Gonderia rare.
3/12/24			6-4	24	8,400	79	2	30	1		Anaplasma and Gonderia.
8/12/24			7-9	29	9,500	48	3	47	2		Anaplasma and Gonderia.
15/12/24	9 a.m.	J.	6-7	25	9,800	58	7	33	2		Anaplasma and Gonderia infrequent; S.A.
23/12/24			7-7	29	9,500	47	3	48	1		Anaplasma and Gonderia infrequent; S.A.
29/12/24			7-3	27	9,100	56	5	38	1		Anaplasma and Gonderia infrequent; S.A.
2/1/25			7-6	29	8,400	67	3	38	1		Anaplasma rare; S.A.; S.P.
6/1/25			7-7	26	7,200	67	9	21	3		Anaplasma rare; S.A.; S.P.

## EXPERIMENT NO. S. 1602 (continued).—SHEEP 8427.

Date.	Time.	Source.	R.C.	R.P.	W.C.	L.	M.	N.	E.	B.	Remarks.
13/1/25			6.7	24	10,400	60	5	32	3		Anaplasma very rare.
27/1/25			7.5	29	11,800	66	5	27	2		Anaplasma and Gonderia very rare; S.A.
5/2/25			7.6	28	14,400	51	3	45	1	2	Gonderia very rare; S.A.
9/2/25			9	27	11,600	50	4	38	6		Anaplasma rare; S.A.
24/2/25			9	30	11,800	82	7	29	6		Few Anaplasma; few Gonderia; S.A.
5/3/25			8.2	30	9,500	50	11	38	1		Few Anaplasma; S.A.
12/3/25			8.4	28	12,000						Anaplasma and Gonderia rare; S.A.
19/3/25			8.1	25	9,700	24	3	70	2		Anaplasma and Gonderia rare; S.A.
24/3/25			8.3	32	21,200						Anaplasma and Gonderia rare; S.A.
31/3/25			8.9	30	11,000						Anaplasma and Gonderia rare; S.A.
23/4/25			8.6	26	12,300	57	5	30	6	2	Anaplasma and Gonderia few.

## EXPERIMENT NO. S. 1613.—SHEEP 8428.

Date.	Time.	Source.	R.C.	R.P.	W.C.	L.	M.	N.	E.	B.	Remarks.
19/3/24	9 a.m.	Intra-jugularly	10 c.c.								
20/3/24		J.	11.5	50	7443 13,900	35	2	63			S.A.
29/3/24				36	15,900	34	5	58	2	1	Anaplasma rare; S.A.
2/4/24			8.9								Anaplasma; S.A.; S.P.; S.P.D.; J.H.
8/4/24				24	11,900	53	3	43		1	Anaplasma; A.; S.P.
9/4/24			4.6	24	12,600	41	10	49			Anaplasma very rare; A.; P.; P.D.; N.
14/4/24			5.2								Anaplasma more frequent.
19/4/24				27	7,700	53	10	37	1	2	Anaplasma rare; S.A.; S.P.
22/4/24			5.3	21	14,700	43	9	47	4		
29/4/24			7.9	30	8,500	48	14	32	1		
8/5/24			7.0	34	12,800	50	18	31	2		
16/5/24			6.9	29	7,600	56	4	34	2		
23/5/24			8.8	34	7,900	67	4	29	1	1	Anaplasma few.
6/6/24			8.7	35	8,800	62	4	32	2		
24/6/24			8.6	35	8,800	62	4	29	1	1	
1/7/24			9.7	36	12,400	54	3	40			

Date.	Time.	Source.	R.C.	R.P.	W.C.	L.	M.	N.	E.	B.	Remarks.
3/7/24	Splenectomized.										
14/7/24			7-3	40	19,200	41	13	44	1		Anaplasma few; S.A.; Gonderia; lymph with granules.
16/7/24			4-8	30	27,600	49	7	44			Anaplasma frequent; Gonderia; lymphocytes with granules.
18/7/24			3-1	23	45,900	32	13	55	1		Anaplasma very frequent.
19/7/24			1-1	15	58,800	31	20	45			Anaplasma frequent; A.; P.; Gonderia; Mc. with granules.
20/7/24			1-6	±10	35,500	25	18	51	1		Anaplasma less frequent; A.; P.; E.; N.
21/7/24			2-3	±15	25,100	9	21	53	1		Anaplasma less frequent; A.; P.; E.; N.; J.B.
22/7/24			2-7	±18	17,900	30	18	58	4	1	Anaplasma less frequent; A.; P.; E.; with granules; J.B. frequent; Mc. E. frequent; P.; vacuolated appearance of M. and Neut.
23/7/24			3-6	23	11,000	44	7	58	5		Anaplasma rare; P.; J.B. frequent; (various stages); P.; N.; J.B. frequent.
24/7/24			3-7	23	10,700	45	20	32	2	1	Anaplasma rare; J.B. (various stages). J.B. frequent; several erythrocytes, more than one; S.P.D.
25/7/24	9 a.m.	J.	5-2	24	7,100	64	6	29	1		J.B. smaller; many peripheral; P.D.; S.P. (Note appearances of blood platelets.)
26/7/24			5-5	26	9,600	55	8	37			J.B. less frequent; difficult to distinguish from Anaplasma.
27/7/24			6-8	27	11,100	48	15	35	1	1	J.B. like Anaplasma.
28/7/24			8-5	33	13,000	55	7	37			Anaplasma and J.B. rare; A.
29/7/24			8-6	31	12,200	53	3	43	2	1	J.B. rare; S.A.
1/8/24			8-6	30	16,000	64	3	30	3		Anaplasma not rare; A.; J.B.; Gonderia.
11/8/24			7-9	25	14,900	58	3	38	3		
19/8/24			6-5	20	21,000	58	3	38	1		
22/8/24			4	22	17,700	56	3	41			
26/8/24			5-7	23	12,100	78	4	27	1		Anaplasma rare; A.; S.P.; P.D.; Gonderia; N.; J.B.
1/9/24			6-5	25	11,600	72	6	20	2		Gonderia not rare; A.
3/9/24			7-3	29	15,200	64	7	26	2	1	Gonderia not rare; Anaplasma few.
5/9/24			8	30	11,900	66	10	24	2		Gonderia not rare; Anaplasma few.
11/9/24			8-5	30	9,400	62	5	30	2	0	Gonderia not rare; S.A.
15/9/24			6-1	24	14,700	54	11	26	9	0	Gonderia not rare.
22/9/24			7-8	30	20,100	49	4	37	8	1	Anaplasma not rare; Gonderia.
29/9/24			6-1	24	15,900	49	3	25	2	1	Gonderia not rare; Anaplasma few; S.A.
10/10/24			6	23	13,100	73	5	21	1		



## EXPERIMENT NO. S. 1602 (continued).—SHEEP 8428.

Date.	Time.	Source.	R.C.	R.P.	W.C.	L.	M.	N.	E.	B.	Remarks.
31/10/24			8-2	30	16,000	70	6	24			Gonderia rare; Anaplasma not rare; S.A.
5/11/24			7-1	25	16,200	61	5	33	1		Anaplasma not infrequent; Gonderia rare;
7/11/24			5-9	24	17,100					1	S.A.
11/11/24			5	20	16,000	70	5	22	2	1	Anaplasma not infrequent; A.; P.; P.D.
14/11/24			5-5	23	9,700	60	5	25			Anaplasma rare; Gonderia rare; S.A.
18/11/24			6-8	29	11,800	72	4	24			S.A.
28/11/24			7-9	31	17,100	65	1	24			Anaplasma not infrequent; A.; P.; P.D.
1/12/24			8	30	12,100	68	3	20			Anaplasma rare; Gonderia rare; S.A.
3/12/24			8-6	30	17,100	60	8	34			S.A.
9/12/24			5-6	20	19,500						Anaplasma and Gonderia very rare.
15/12/24			5-8	21	11,900	69	6	19	4	1	Anaplasma and Gonderia very rare.
28/12/24	9 a.m.	J.	7-7	29	7,500						Anaplasma; Gonderia; S.A.; J.B.
29/12/24			8	27	10,800	66	5	26			Anaplasma; Gonderia; S.A.; J.B.
2/1/25			8-3	30	12,200	66	5	26	2	1	Anaplasma and Gonderia infrequent.
6/1/25			8-8	30	11,700	52	6	30	2		Anaplasma not infrequent; S.A.
13/1/25			8-4	23	16,000	61	6	28	5		Anaplasma not infrequent; Gonderia rare.
27/1/25			8-1	31	10,900	68	2	26	4		Anaplasma rare; Gonderia rare; S.A.
5/2/25			8	29	19,100	55	5	32	6	1	Anaplasma rare; S.A.
9/2/25			8	26	12,900	69	4	20	4	1	Gonderia not rare; Anaplasma rare; S.A.
24/2/25			6-8	25	13,600	74	4	17	4		Gonderia not rare; Anaplasma rare; S.A.
5/3/25			7-6	28	16,700	64	6	28	2		Few Anaplasma; S.A.
12/3/25			7-3	25	18,100						Anaplasma and Gonderia not infrequent; S.A.
19/3/25			6	26	18,600	40	2	55	3		Anaplasma and Gonderia not infrequent; S.A.
24/3/25			6-4	30	23,500						Anaplasma and Gonderia rare; S.A.
31/3/25			8-2	34	18,800						Anaplasma and Gonderia rare; S.A.
23/4/25			9-0	27	17,800	45	9	42	3	1	Anaplasma and Gonderia few.

## EXPERIMENT NO. S. 1613.—SHEEP 8429.

Date.	Time.	Source.	R.C.	R.P.	W.C.	L.	M.	N.	E.	P.	Remarks.											
19/3/24	9 a.m.	Intrajugularly J.	10 c.c.	blood, Sheep	7369.	43	7	50	2													
20/3/24												45	7,500	52	8	38						
31/3/24												37	8,600									
2/4/24																						
5/4/24																						
7/4/24																						
9/4/24												30	5,800	67	2	23			4			S.A.; Anaplasma rare.
12/4/24												17	8,100	59	9	29			3			S.A.; Anaplasma rare.
14/4/24												25	5,600	53	9	38			3			S.A.; Anaplasma rare.
19/4/24												30	9,200	48	12	35			5			S.A.; Anaplasma rare.
22/4/24												34	9,400	46	9	45						S.A.; Anaplasma rare.
29/4/24																						S.A.; Anaplasma rare.
6/5/24											S.A.; Anaplasma rare.											
15/5/24				27	8,900	38	17	42	4			S.A.; Anaplasma rare.										
22/5/24			6.2	36	8,600	63	16	23				S.A.; Anaplasma rare.										
5/6/24			6.6	33	8,600	67	11	21	1			S.A.; Anaplasma rare.										
24/6/24			8.3	28	8,700	59	6	30	3			S.A.; Anaplasma rare.										
6/8/24			8.5	35	10,300	71	3	21	3			S.A.; Anaplasma rare.										
27/8/24			7.4	34	6,400	58	6	32	2			S.A.; Anaplasma rare.										
17/9/24			8.3	32	9,000	65	3	30	2			S.A.; Anaplasma rare.										
22/9/24			8.4	30	7,900	59	3	28	10			S.A.; Anaplasma rare.										

Still a few Anaplasma observed.  
S.A.

Anaplasma frequent; difficult in distinguish-  
ing between lymphocytes and monocytes.

S.A.; Anaplasma rare.  
S.A.; Anaplasma rare.  
S.A.; Anaplasma rare.  
S.A.; Anaplasma rare.  
Anaplasma more frequent; A.  
Anaplasma frequent; P.; N.  
Anaplasma rare; P.; P.D.; J.B.  
Anaplasma rare; S.A.; P.  
Anaplasma frequent.  
Anaplasma frequent; difficult in distinguish-  
ing between lymphocytes and monocytes.

## EXPERIMENT NO. S. 1602.—SHEEP 8429.

Date.	Time.	Source.	R.C.	R.P.	W.C.	L.	M.	N.	E.	B.	Remarks.	
22/9/24		Splenecto mized.	11	41	13,000	15	10	85	9	2	Anaplasma rare.	
24/9/24			3	37	9,700	38	9	41	2	0	Anaplasma rare.	
29/9/24			10-2	39	10,500	53	6	36				
3/10/24			11	42	18,500	44	8	50	0	2		
9/10/24			10-1	42	17,000	44	5	50	1	1		
13/10/24			7-2	31	12,300	45	10	48	40			
15/10/24			6	35	18,900	50	10	40	4			
16/10/24			4-8	21	17,500	54	10	32	5			
16/10/24	9 a.m.		4	21	13,000	60	5	5	5		1	Anaplasma not frequent; A.; P.; P.D.; J.B.
22/10/14				4-4	23	13,800	44	9	36	9	2	Anaplasma rare; S.P.D.; A.; J.B.
27/10/24			6-1	31	6,900	50	10	25	13	2	Anaplasma not frequent; A.; J.B.	
31/10/24			6-4	25	13,400	50	17	22	11		Anaplasma not frequent; A.; J.B.	
4/11/24			4	20	17,500	49	14	33	4		Anaplasma not frequent; A.; E.; N.	
8/11/24			4-8	25	7,500	70	5	20	5			
13/11/24			6-7	32	8,700	66	2	16	13	1		
15/11/24			8	29	8,900	63	4	22	11			
20/11/24			8	29	10,800	50	12	30	8		Anaplasma rare; S.A.	
25/11/24			6-5	25	11,100	51	10	32	6		Anaplasma not frequent; A.	
4/12/24			6-7	27	11,000	68	5	35	4	3	Anaplasma rare; J.B. different stages.	
9/12/24			8-2	30	14,300	50	6	23	6		Anaplasma not frequent; J.B.	
17/12/24			7-4	26	13,000	54	7	13	13		Anaplasma not frequent; J.B.	
23/12/24			8-6	28	10,500	67	8	24	1		Anaplasma; S.A.	
29/12/24			5-8	25	11,400						Anaplasma not frequent; A.; J.B.	
5/1/25			6-5	29	10,500	76	5	19	4	1	Anaplasma not frequent; S.A.; J.B.	
9/1/25			6-8	28	10,700	62	8	25	5	3	Anaplasma rare.	
12/1/25			7	28	9,800	69	6	17	5		Anaplasma not frequent; S.A.; J.B.	
27/1/25			5-4	23	11,000	62	6	27	11	3	Anaplasma not frequent; A.; P.D.	
5/2/25			6-8	29	11,700	57	2	27	5		Anaplasma not frequent; S.A.	
9/2/25			6-8	26	16,500	37	5	38	20	3	Anaplasma not frequent; S.A.	
24/2/25			6-8	25	16,000	63		26	11		Anaplasma frequent; S.A.	
5/3/25			6-2	27	15,100	55	6	29	10		Anaplasma rare; S.A.	
12/3/25			6-4	27	13,300						Anaplasma rare; S.A.	
19/3/25			6-5	24	17,700						Anaplasma not frequent; S.A.; S.P.	
24/3/25			6	27	20,500	33	2	54	10	1	Anaplasma not frequent; S.A.; S.P.	
31/3/25			6-9	30	13,000	50	4	37	8	1	Anaplasma; S.A.	
23/4/25			7-0	25	9,900	41	5	42	11	1	Anaplasma not frequent.	



## EXPERIMENT NO. S. 1602.—SHEEP 8434.

Date.	Time.	Source.	R.C.	R.P.	W.C.	L.	M.	N.	E.	B.	Remarks.	
9/7/24		Splenectomized.										
11/7/24												
14/7/24			9.3	35	13,000	34	6	59	1		Anaplasma not rare; lymphocytes with large granules.	
16/7/24											Anaplasma frequent; granules in M. and lymphocytes.	
17/7/24			4.3	22	20,000	39	12	47	2		Anaplasma very frequent (more than one in one cell); S.A.; S.P.	
18/7/24												Anaplasma very frequent (more than four in one cell).
19/7/24			1.8	± 10	34,600	35	16	48	1			Anaplasma less frequent; E. frequent; N. frequent; numerous interesting monocytes.

## EXPERIMENT NO. S. 1613.—SHEEP 8462.

Date.	Time.	Source.	R.C.	R.P.	W.C.	L.	M.	N.	E.	B.	Remarks.
21/5/24			10.2	39	5,700	59	6	30	1		
21/5/24		Intrajugularly	10 c.c.	blood,	She ep	8458 (o	vine Anapl	asmosis).			
28/5/24			8.3	27	8,200	46	12	40	2		
2/6/24			3		7,300	54	20	26			Coccus-like bodies.
4/6/24			3	17	5,800	57	14	28			Anaplasma not infrequent.
9/6/24			4.6	23	7,200	69	4	23	1		Anaplasma frequent; A.; P.; P.D.; N.
17/6/24			4.4	24	9,300	70	6	22	4		Anaplasma frequent; S.A.; P.; P.D.
23/6/24			4.8	24	9,100	63	3	34	2		Anaplasma rare; A.; P.; P.D.
28/6/24			5.9	29	11,300	70	2	26	2		Anaplasma rare; S.A.; P.; P.D.
2/7/24			6.1	29	11,000	58	12	30			Anaplasma very rare.
8/7/24			6	34	9,300	71	5	18	6		Anaplasma very rare.
28/7/24			8.3	31	13,000	63	4	30	1	2	
6/8/24			10.8	35	13,700	74	2	20	4		
12/8/24			8.9	30	9,500	65	5	28	1	1	

## EXPERIMENT NO. S. 1602.—SHEEP 8462.

Date.	Time.	Source.	R.C.	R.P.	W.C.	L.	M.	N.	E.	B.	Remarks.
22/9/24											
24/9/24		Splenic vein	11.1	38	2,200	68	8	24			(Relative few leucocy tes.)
25/9/24		and artery	9.2	30	1,500	56	24	20			(Relative few leucocy tes.)

## EXPERIMENT NO. S. 1602.—SPECIES SHEEP 8451.

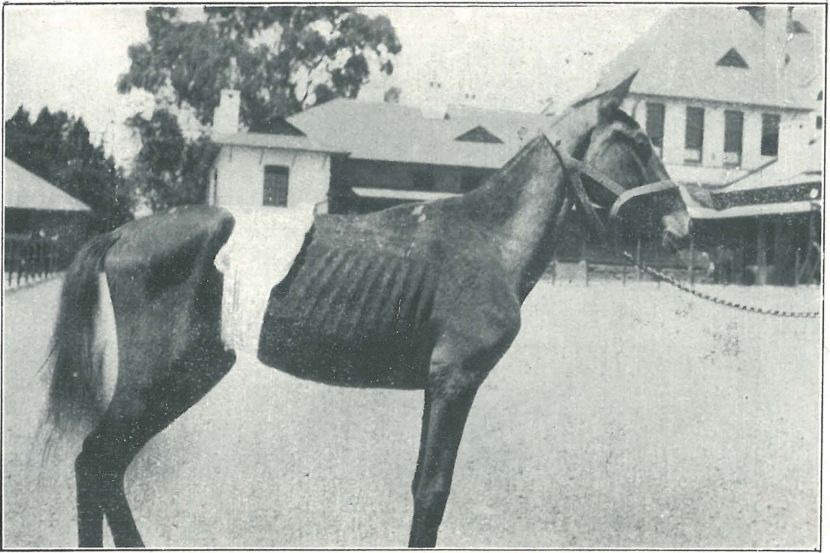
Date.	Time.	Source.	R.C.	R.P.	W.C	L.	M.	N.	E.	B.	Remarks.
28/1/25	9 a.m.	J.	12.9	40	10,000	42	1	54	3		Negative smear.
28/1/25	3 p.m.	Splenecto	12.3	41	9,300	35	11	48	6		Thrombocytes very numerous.
30/1/25	9 a.m.	J.	11.8	40	12,400	38	13	47	2		Anaplasma not infrequent.
3/2/25			12.6	45	12,400	36	10	53	1		Anaplasma frequent; few Gonderia.
5/2/25			15.5	45	11,200	30	10	53	5		Anaplasma frequent (some cells more than one); S.A.; S.P.; N.
9/2/25			13.1	40	15,100	36	6	53	5		Anaplasma frequent; A.; P.; P.D.; N.
13/2/25			4.6	19	22,100	25	8	60	7		Anaplasma rare; A.; P.; S.P.D.; J.B.
16/2/25											
20/2/25			4.9	24	12,700	20	5	75	2		S.A.; J.B. not frequent.
25/2/25			5.3	23	8,300	43	5	50	10		A.; slight polkilocytosis.
27/2/25			7.7	26	7,800	40	7	43			
27/3/25			7.8	28	7,800						
10/3/25			9.7	26	3,500	44	10	44	1	1	A.; S.P.; Gonderia rare.
16/3/25			8.8	30							Anaplasma and gonderia rare; S.A.; few J.B.
24/3/25			8.4	30	6,600	50	7	48			Anaplasma and gonderia rare; A.
30/3/25				26							

## EXPERIMENT NO. 1602.—SPECIES SHEEP 9119.

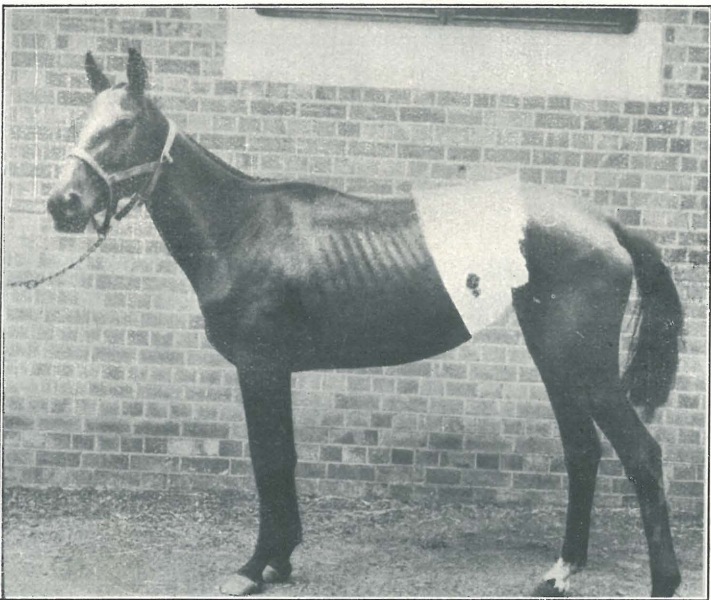
Date.	Time.	Source.	R.C.	R.P.	W.C.	L.	M.	N.	E.	B.	Remarks.
28/1/25	9 a.m.	J.	9·6	29	8,100	40	3	56	1		Very S.A.
28/1/25	3 p.m.	Splenecto mized.	9·7	32	12,400	25	11	63	1		Thrombocytes frequent.
30/1/25	9 a.m.	J.	8·5	29	28,400	22	4	73	1		Thrombocytes frequent.
3/2/25	9 a.m.	J.	8·5	30	12,500	31	3	65	1		Gonderia rare.
5/2/25			8	26	11,100	36	4	60			Gonderia; S.A.; N.
9/2/25			7·7	25	12,200	29	4	65			Gonderia not frequent.
13/2/25			6·9	24	13,300						Gonderia not frequent; S.A.
20/2/25											S.A.
20/2/25			7·7	24	10,800	52	3	44	1		S.A.; anaplasma; gonderia.
24/2/25			7·6	20	13,200	45	6	47	2		Anaplasma more frequent; S.A.; J.B.;
25/2/25											gonderia.
28/2/25			7·4	19	11,800	57	12	26	5		Anaplasma more frequent.
2/3/25			3	16	15,100						A.; P.; P.D.; anaplasma not infrequent;
4/3/25											Thrombocytes frequent.
10/3/25			4·8	17	8,900	63	8	27	2		A.; P.; S.P.D.; anaplasma rare.
13/3/25			4·9	18	6,300						A.; S.P.; S.P.D.
16/3/25			6·2	20	8,900						Anaplasma and gonderia rare; J.B.; S.A.
24/3/25			7·4	22	9,400	51	4	45			Anaplasma not infrequent; S.A.; J.B.
30/3/25											and gonderia; A.



APPENDIX 4.



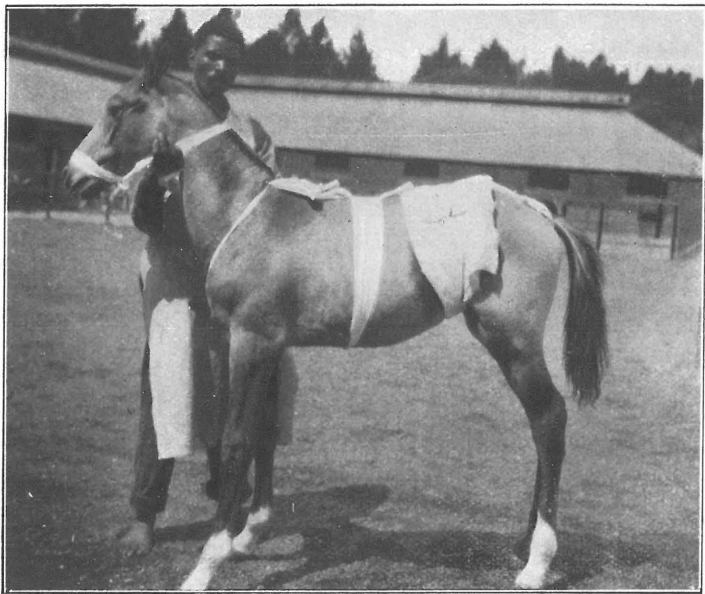
*Plate A.* Equine 15186, 3rd day after Splenectomy.



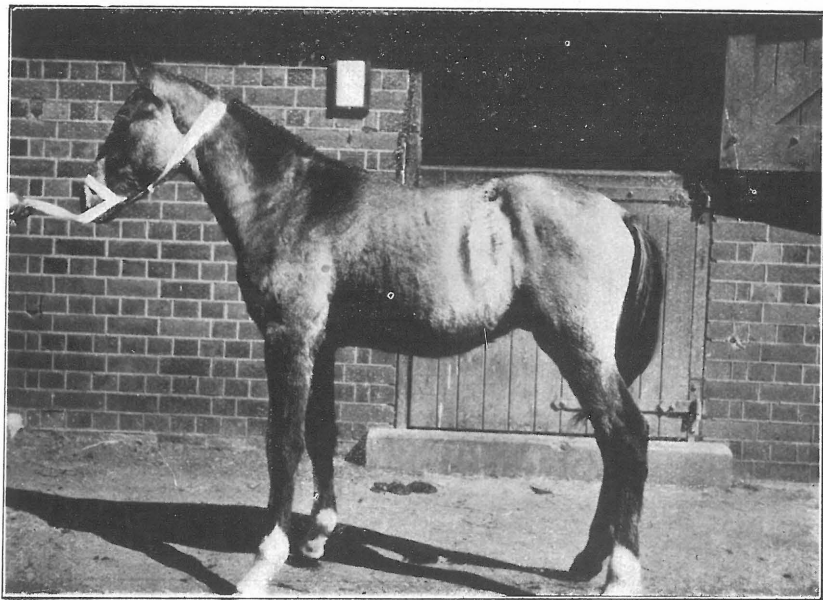
*Plate B.* Equine 15420, taken 24 hours after Splenectomy.

*Splenectomy.]*

*[De Kock and Quinlan.*



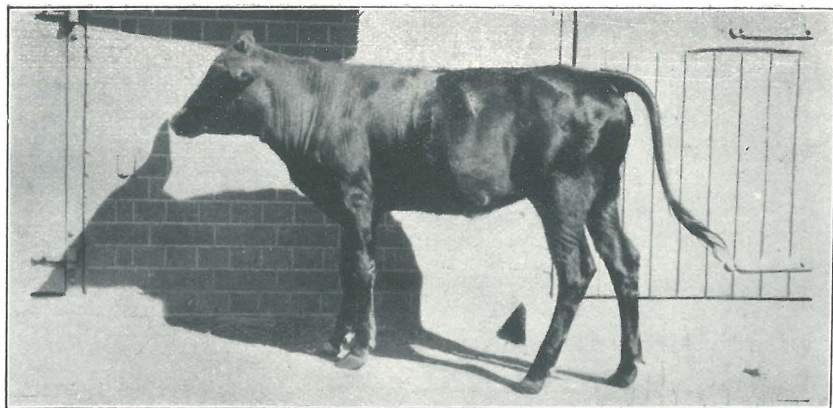
*Plate C.* Equine 16072, taken 15 days after Splenectomy.



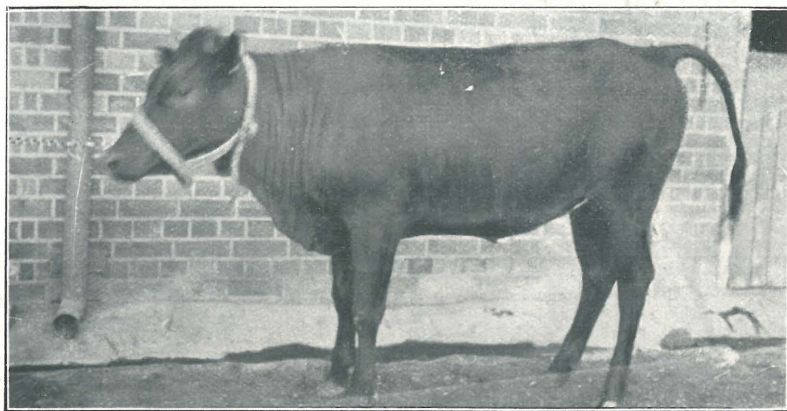
*Plate D.* Equine 16072, taken 5 weeks after Splenectomy.

*Splenectomy.]*

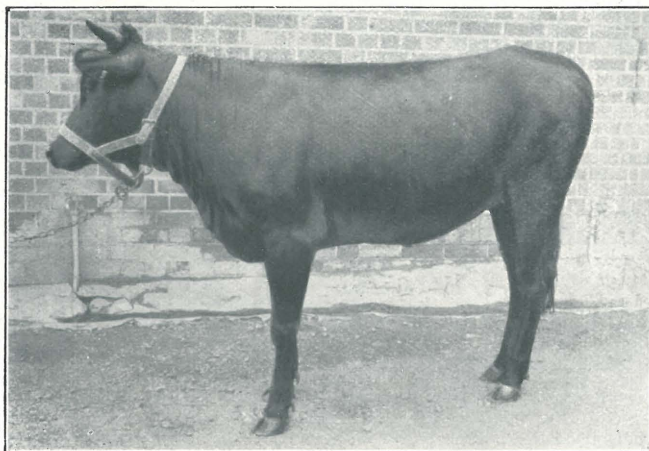
*[De Kock and Quinlan.*



*Plate E.* Bovine 711, taken 2 weeks after Splenectomy.

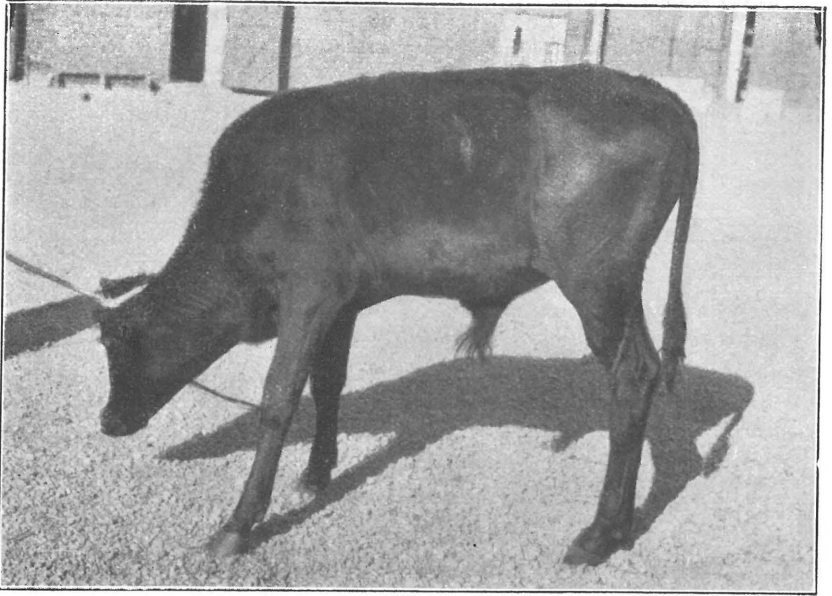


*Plate F.* Bovine 711, taken 8 months after Splenectomy.



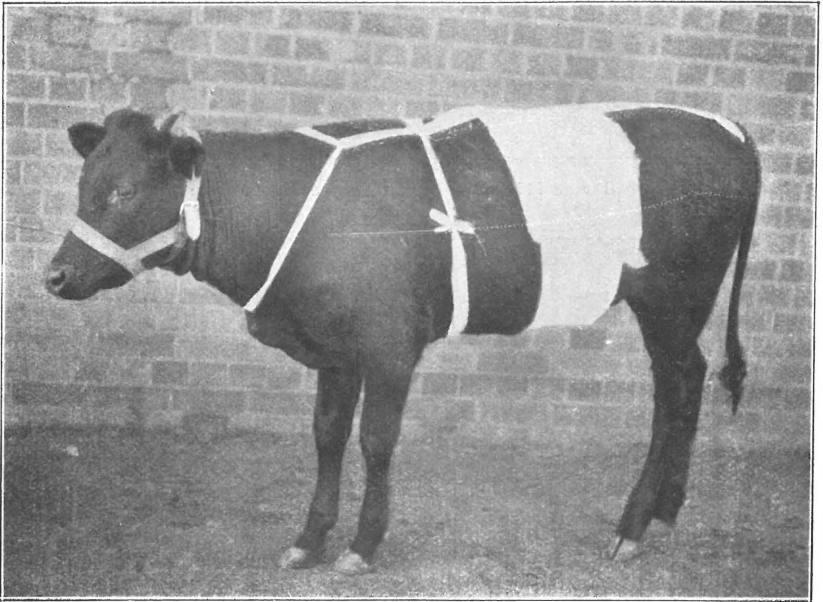
*Plate G.* Bovine 711, taken 10 months after Splenectomy. ;  
*Splenectomy.]*

[*De Kock and Quinlan.*



*Plate II.*

Bovine 758, taken 19 days after Splenectomy.

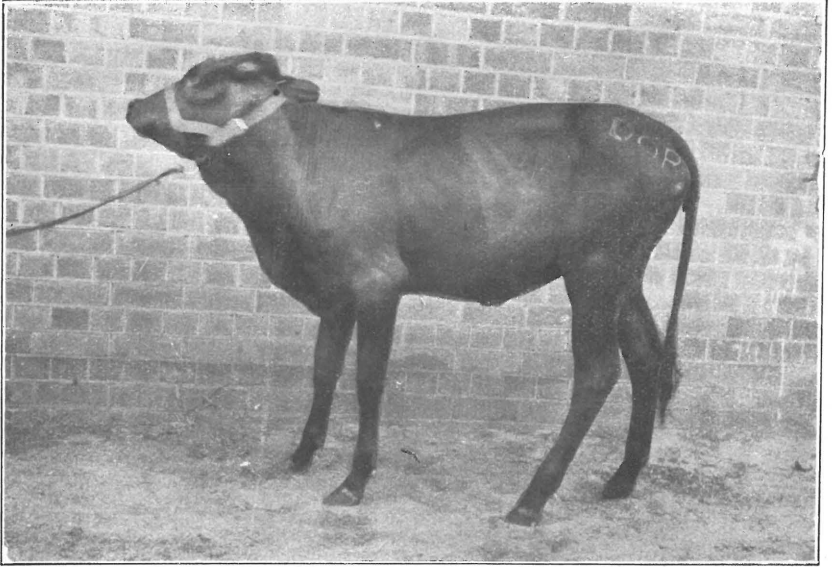


*Plate I.*

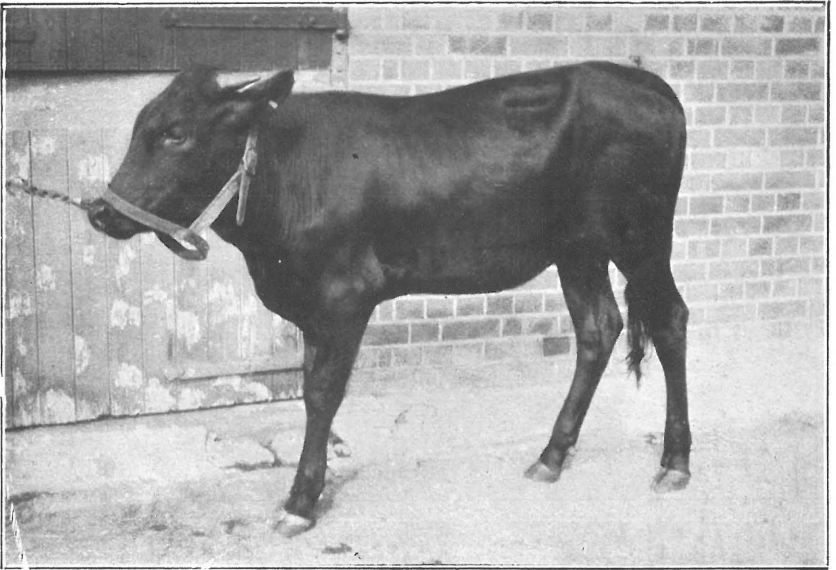
Bovine 828, taken 24 hours after Splenectomy.

*Splenectomy.]*

*[De Kock and Quinlan.*



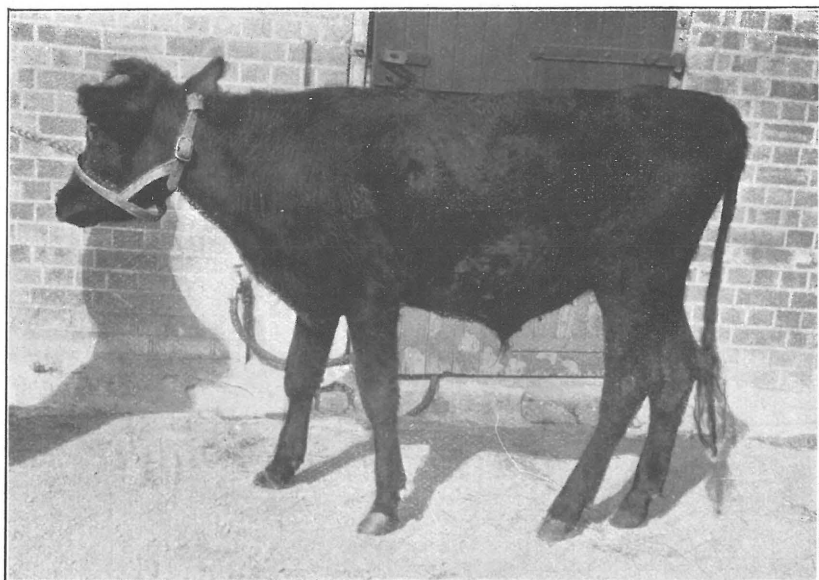
*Plate J.* Bovine 893, taken 4 weeks after Splenectomy.



*Plate K.* Bovine 893, taken 4 months after Splenectomy.

*Splenectomy.]*

*[De Kock and Quinlan.*



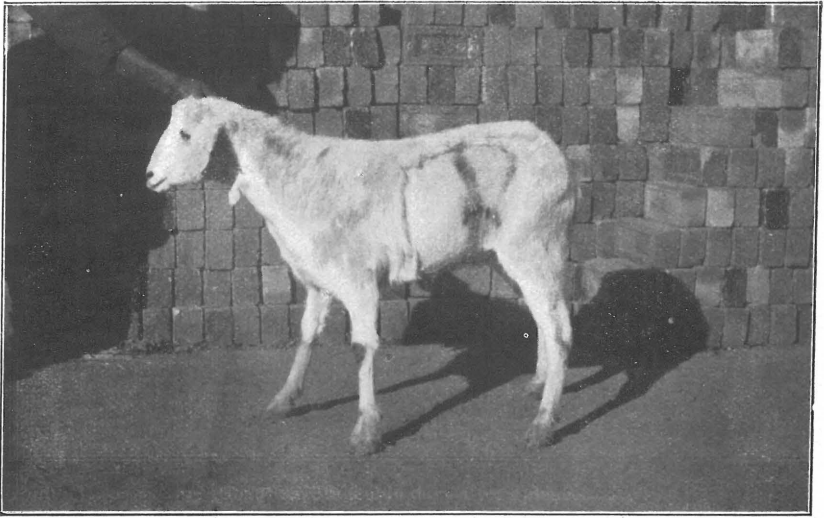
*Plate L.* Bovine 1027, taken 15 weeks after Splenectomy.



*Plate M.* Bovine 1034, taken 15 weeks after Splenectomy.

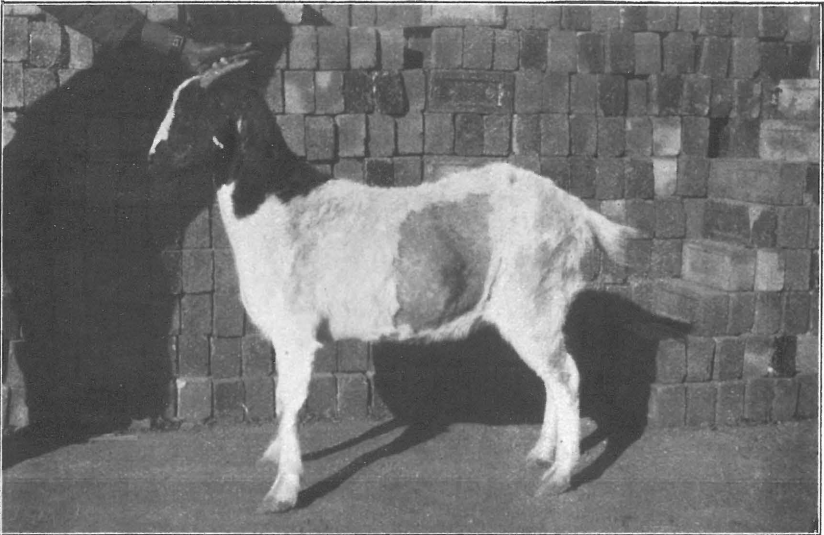
*Splenectomy.]*

*[De Kock and Quintan.]*



*Plate N.*

Goat 8280, taken 26 days after Splenectomy.

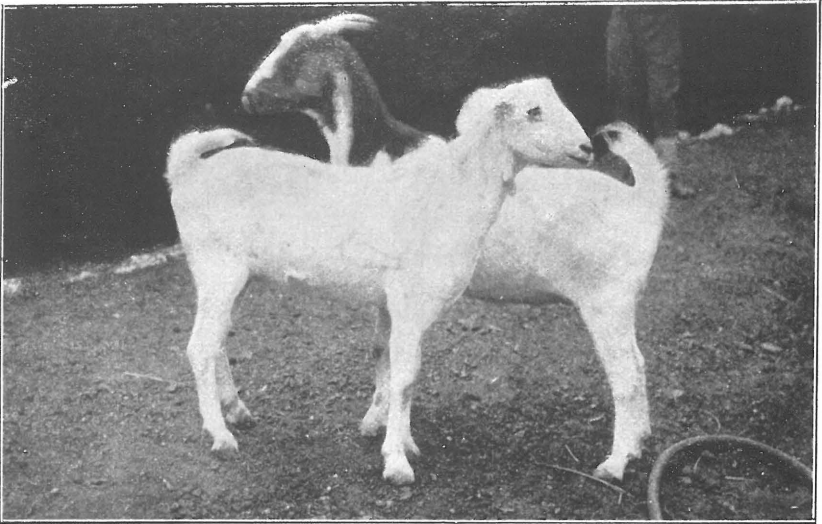


*Plate O.*

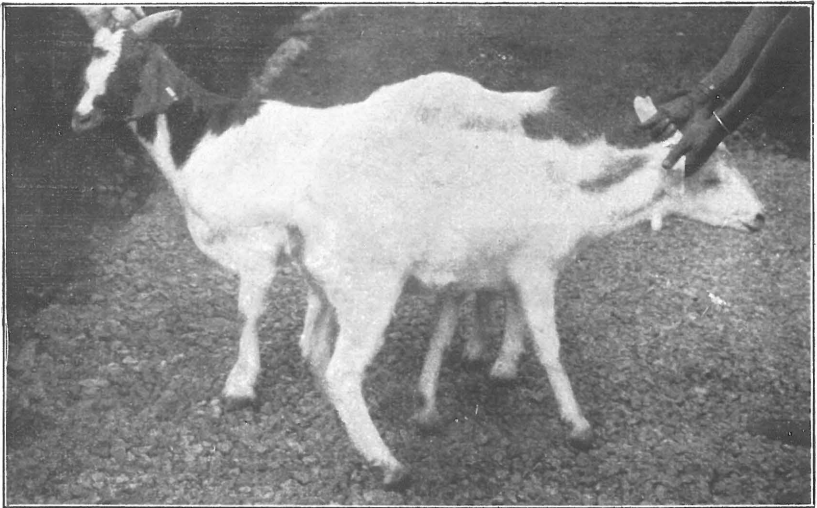
Goat 8340, taken 26 days after Splenectomy.

*Splenectomy.]*

*[De Kock and Quinlan.*



*Plate P.* Goats 8304 and 8280, taken 7½ months after Splenectomy.



*Plate Q.* Goats 8304 and 8280, taken 10 months after Splenectomy.

*Splenectomy.]*

*[De Kock and Quinlan.*