

Figure 1. Monthly wildfire occurrence in the (a) forest zone, (b) pre-forest zone, (c) Sudanian zone and (d) whole NRW from 2001 to 2019.

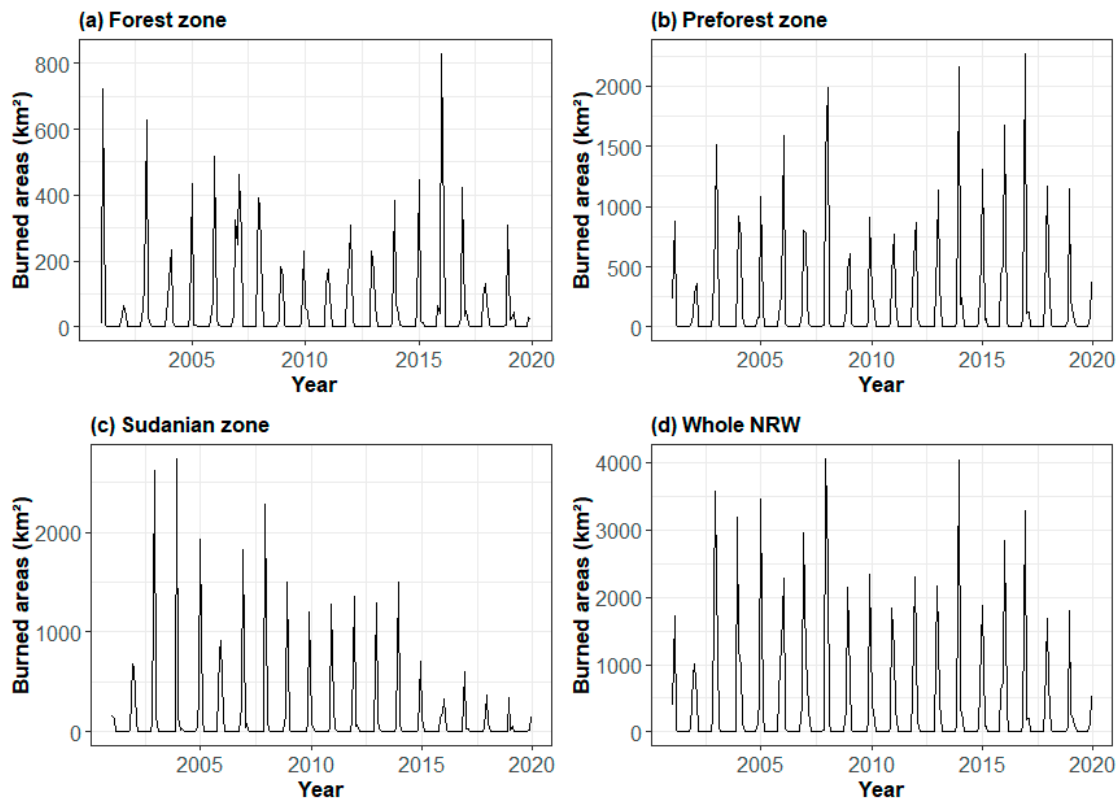


Figure 2. Monthly burned areas in the (a) forest zone, (b) pre-forest zone, (c) Sudanian zone and (d) whole NRW from 2001 to 2019.

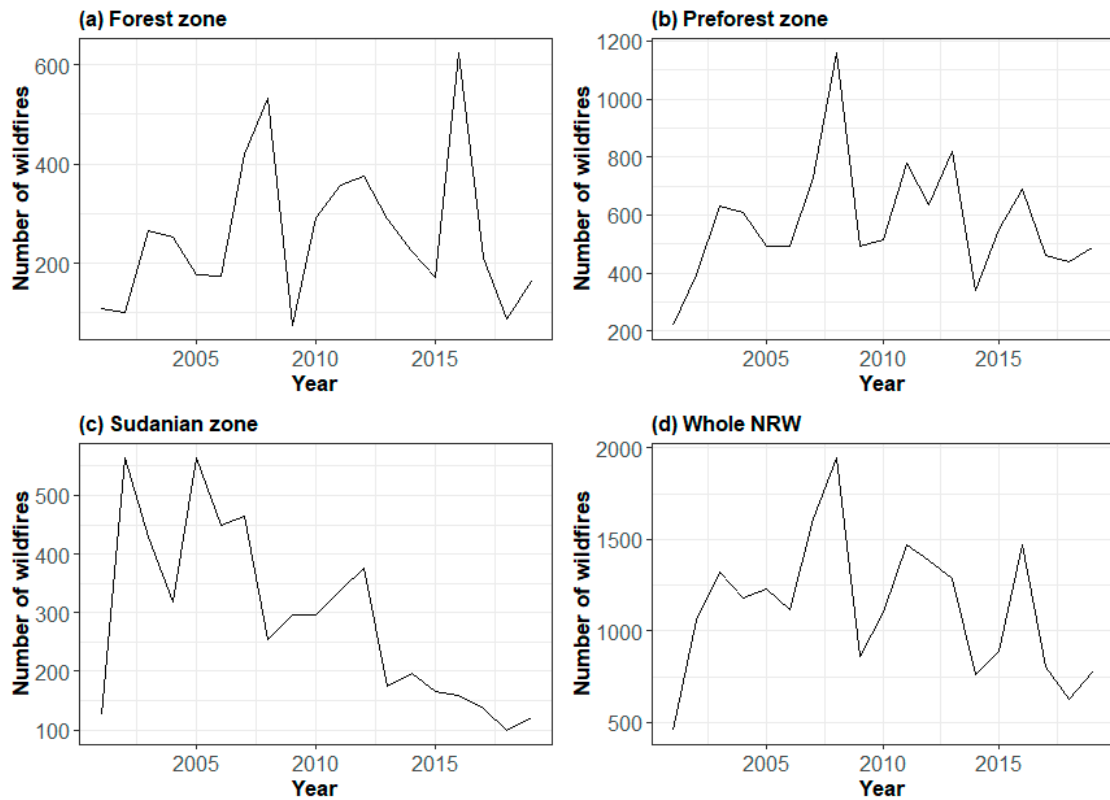


Figure 3. Annual wildfire occurrence in the (a) forest zone, (b) pre-forest zone, (c) Sudanian zone and (d) whole NRW from 2001 to 2019.

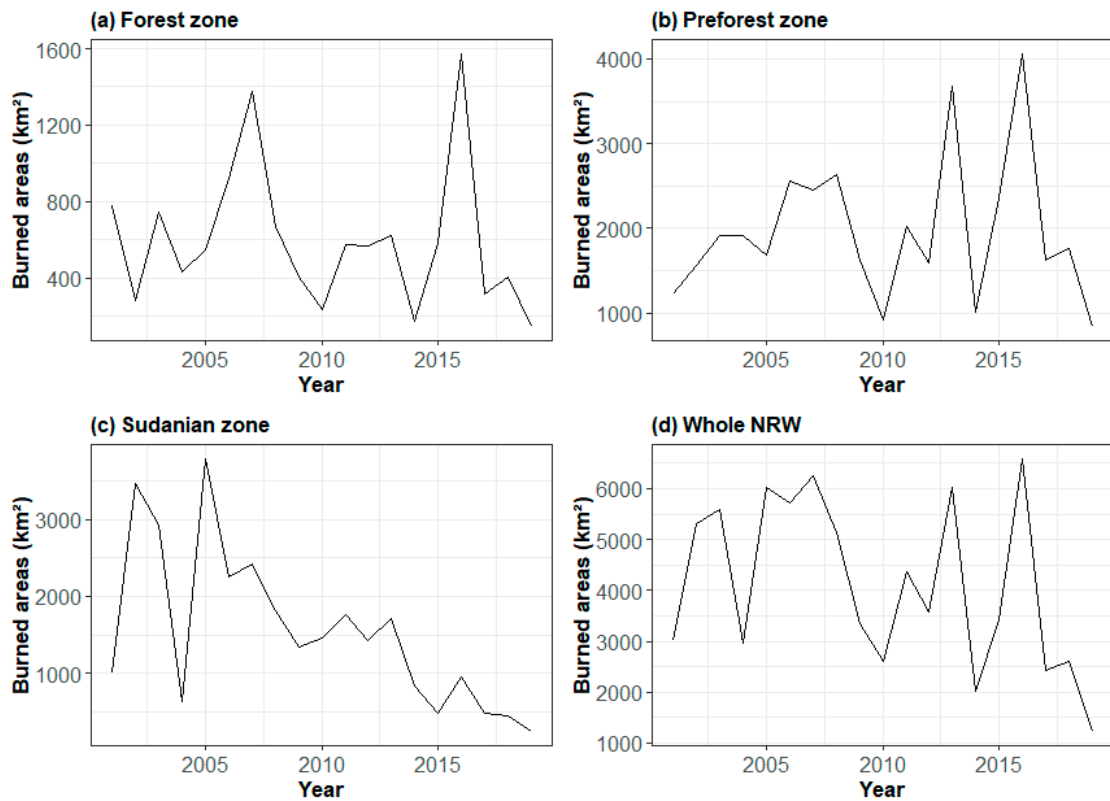


Figure 4. Annual burned areas in the (a) forest zone, (b) pre-forest zone, (c) Sudanian zone and (d) whole NRW from 2001 to 2019.

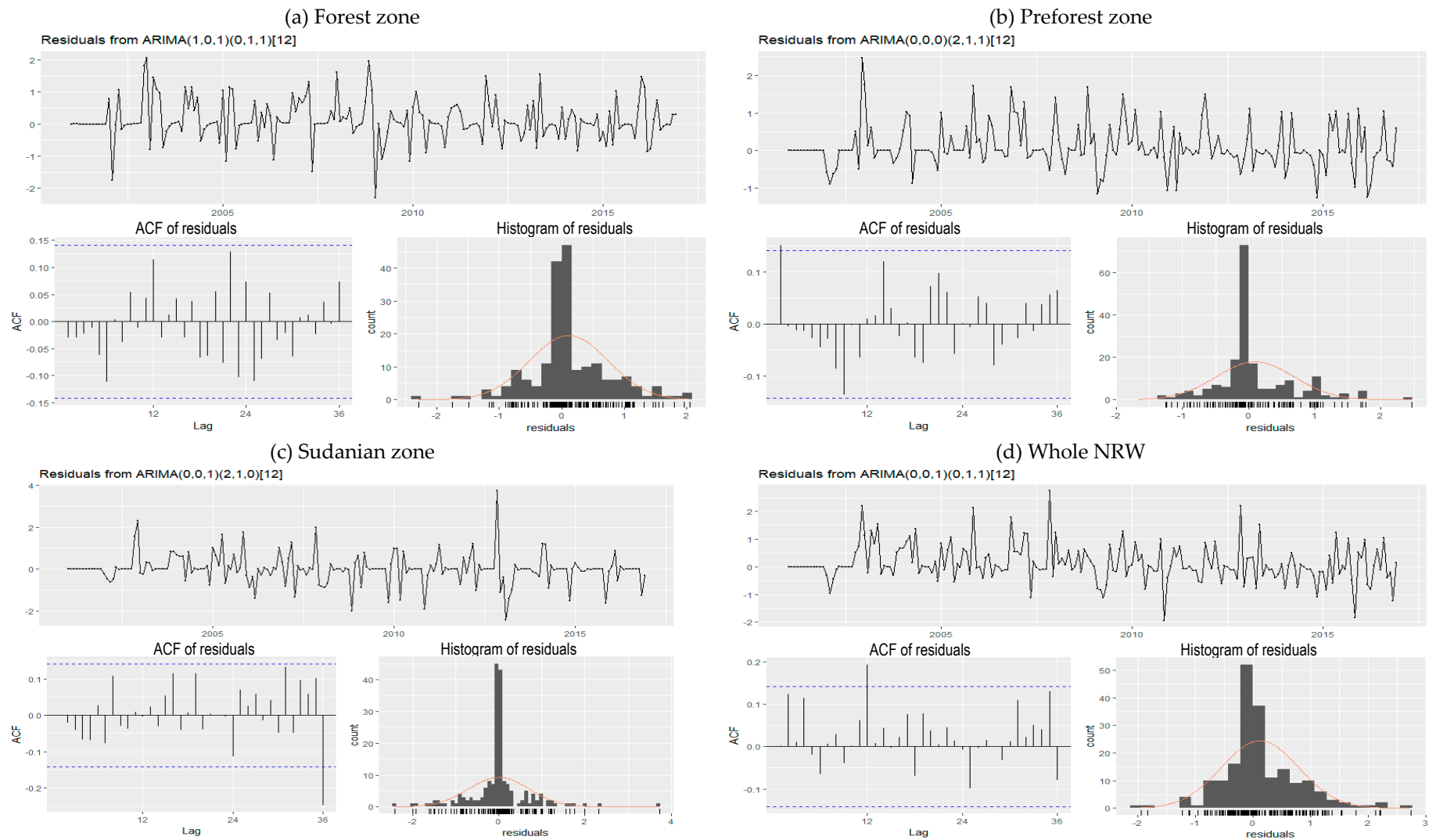


Figure 5. Residual diagnostic plots of the fitted SARIMA models of the number of wildfires in the (a) forest zone, (b) pre-forest zone, (c) Sudanian zone and (d) whole NRW.

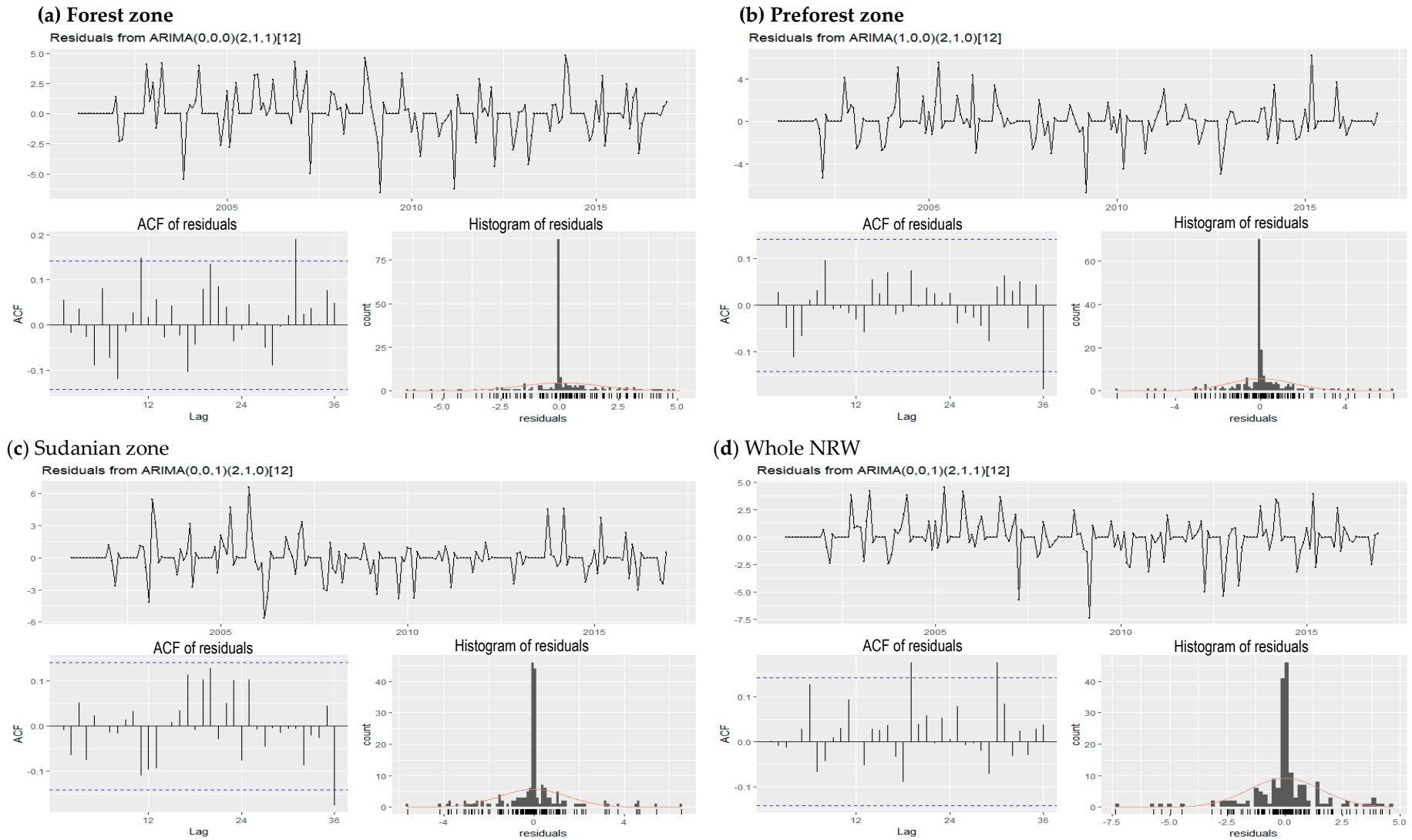


Figure 6. Residual diagnostic plots of the fitted SARIMA models of burned areas in the (a) forest zone, (b) pre-forest zone, (c) Sudanian zone and (d) whole NRW.