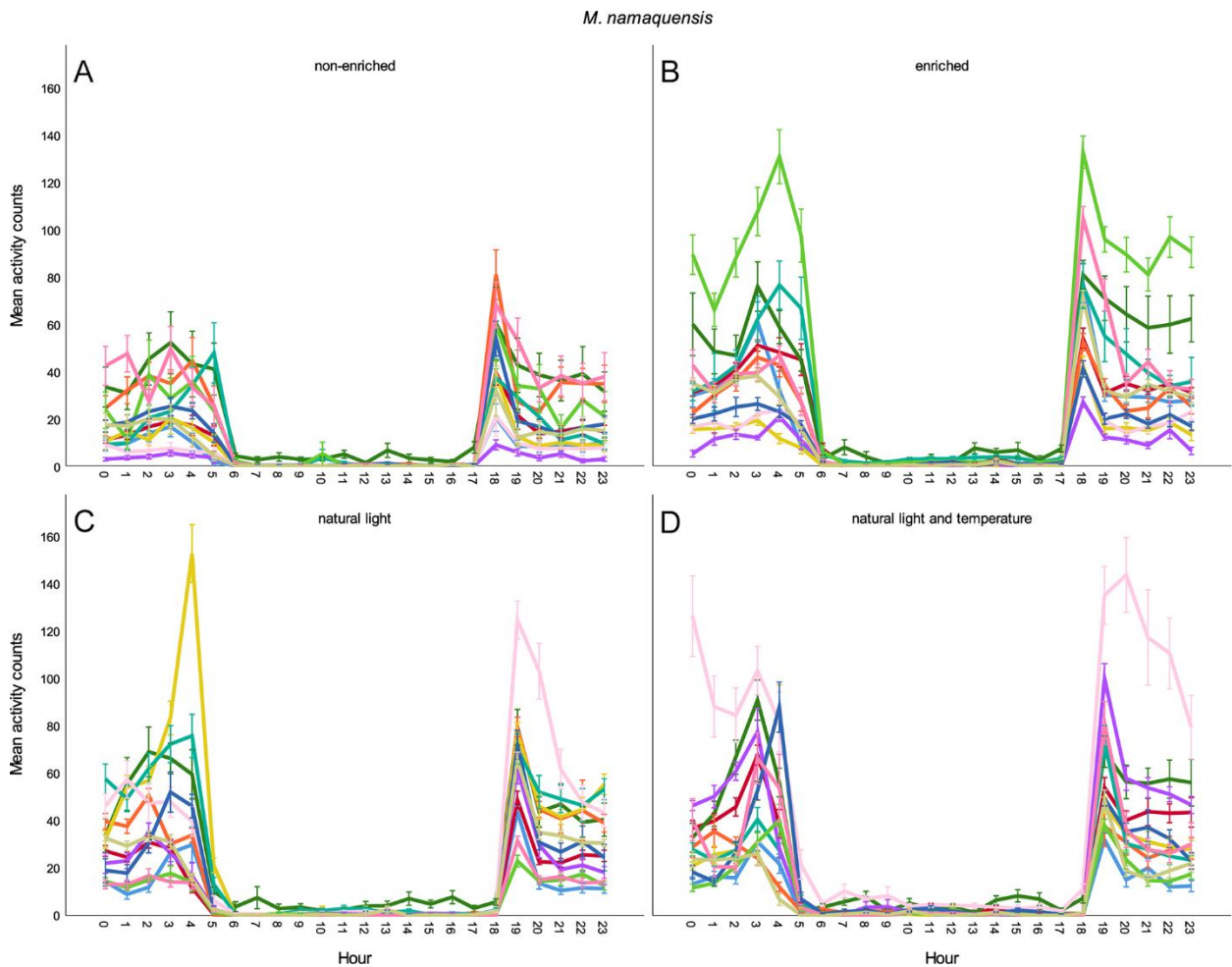
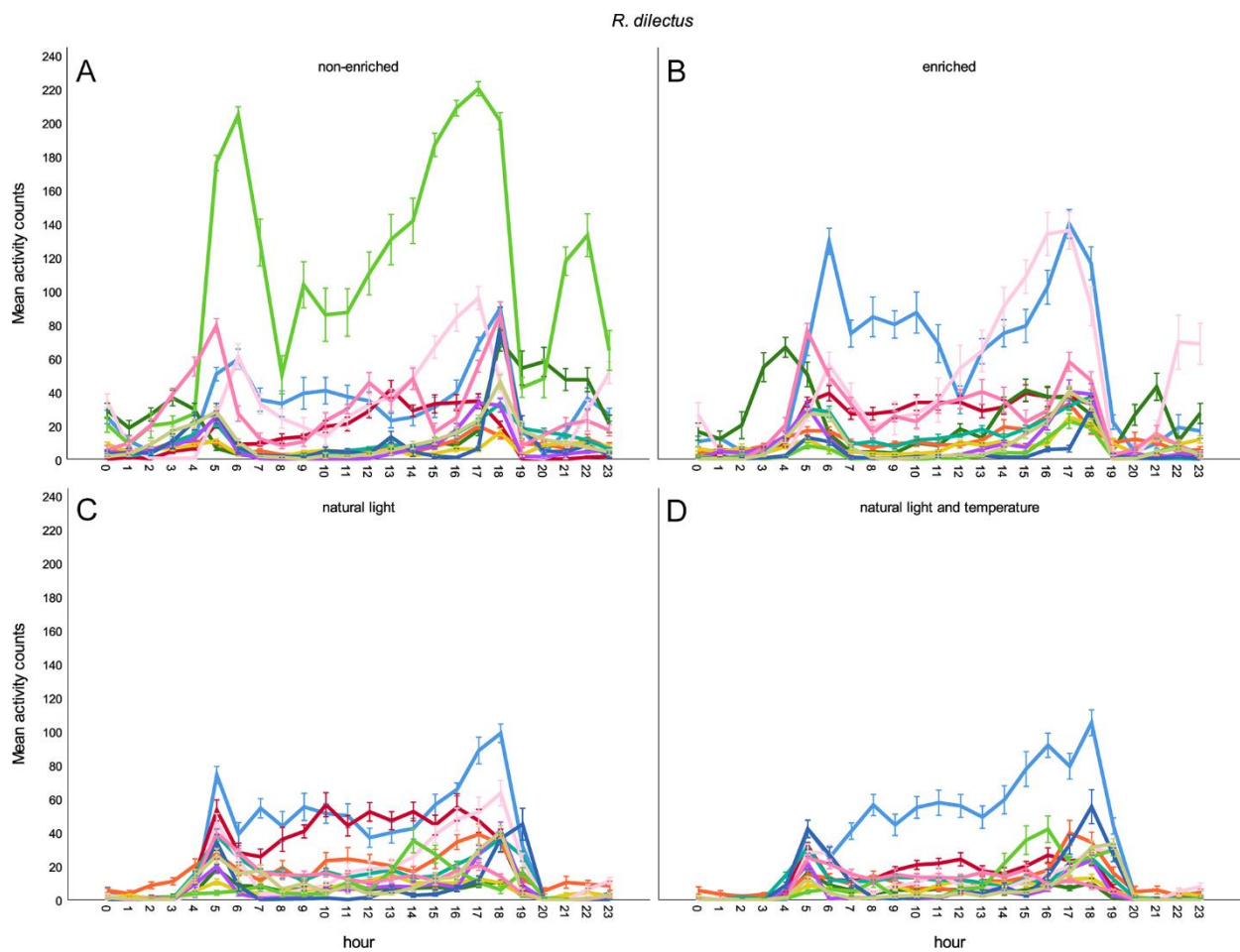


**Supplementary material:**

**Figure 1S:** The average locomotor activity counts per hour ( $\pm$  SEM) of individual *Micaelamys namaquensis* during the 24 hours of the day during the four different light cycles. Light (A) Non-enriched cycle (LD<sub>NE</sub>) with a square wave light cycle (6-18L) and a constant T<sub>a</sub> of 25°C; (B) Enriched cycle (LD<sub>E</sub>) with the same environmental conditions than LD<sub>NE</sub>, but with added enrichment items; (C) natural light cycle (LD<sub>N</sub>) with a simulated dawn and dusk (5-7am and pm); (D) natural temperature cycle (LD<sub>NT</sub>) where ambient temperature cycled between 16 (04h00) and 30°C (15h00).



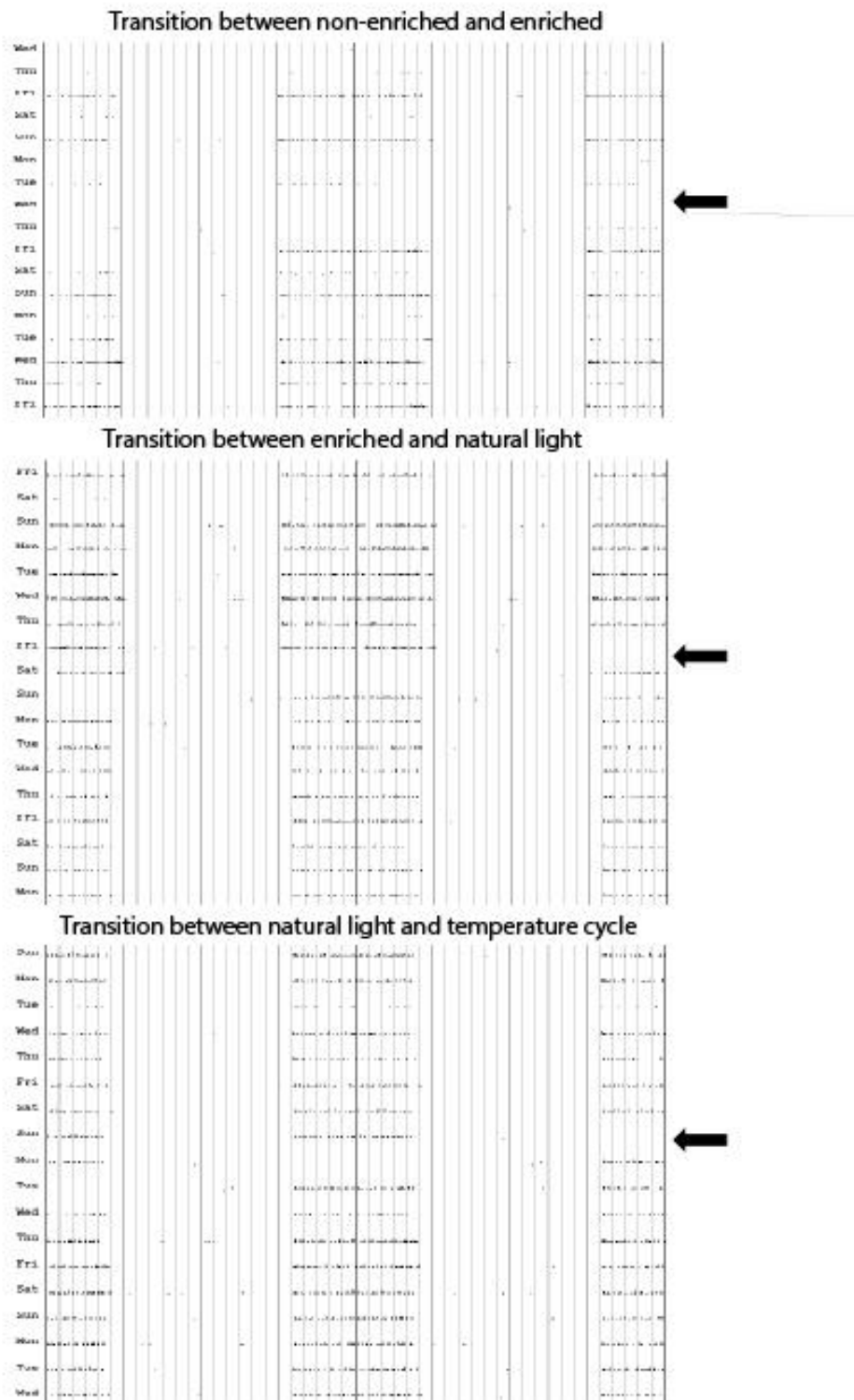
**Figure 2S:** The average locomotor activity counts per hour ( $\pm$  SEM) of individual *Rhabdomys dilectus* during the 24 hours of the day during the four different light cycles. Light (A) Non-enriched cycle (LD<sub>NE</sub>) with a square wave light cycle (6-18L) and a constant T<sub>a</sub> of 25°C; (B) Enriched cycle (LD<sub>E</sub>) with the same environmental conditions than LD<sub>NE</sub>, but with added enrichment items; (C) natural light cycle (LD<sub>N</sub>) with a simulated dawn and dusk (5-7am and pm); (D) natural temperature cycle (LD<sub>NT</sub>) where ambient temperature cycled between 16 (04h00) and 30°C (15h00).



**Figure 3S:**

***M. namaquensis* transitions between light/temperature phases**

The arrow indicates the day of transition, above the arrow is days that were analysed for the light / temperature cycle above, below the arrow are days of the subsequent cycle that were not analysed.



**Figure 4S:**

**R. dilectus transitions between light/temperature phases**

The arrow indicates the day of transition, above the arrow is days that were analysed for the light / temperature cycle above, below the arrow are days of the subsequent cycle that were not analysed.

