

**LEMON TERPENES ELICIT ARRESTMENT BEHAVIOR IN THE AFRICAN CITRUS
TRIOZID *Trioza erytreae* (HEMIPTERA: TRIOZIDAE)**

AKUA K. ANTWI-AGYAKWA^{1,2}, AYUKA T. FOMBONG¹, EMILIE DELETRE^{1,3},
SUNDAY EKESI¹, ABDULLAHI A. YUSUF², CHRISTIAN PIRK², BALDWIN TORTO^{1,2*}

¹ *International Centre of Insect Physiology and Ecology (icipe), Behavioural and Chemical
Ecology Unit, P. O. Box 30772-00100, Nairobi, Kenya*

² *Social Insects Research Group, Department of Zoology and Entomology, University of
Pretoria, Private Bag X20, Hatfield, 0028, South Africa*

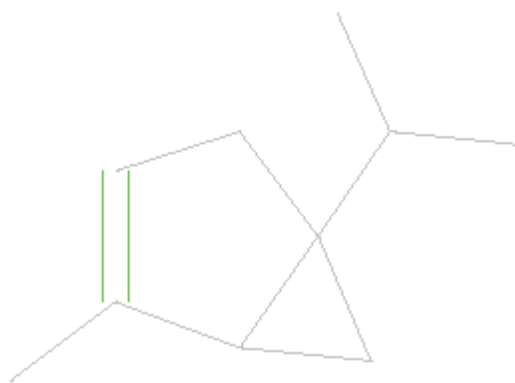
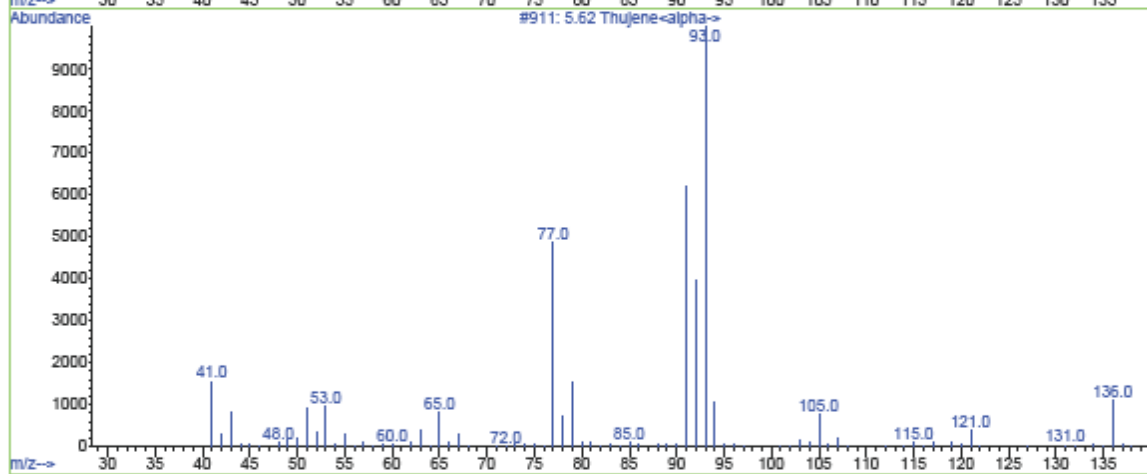
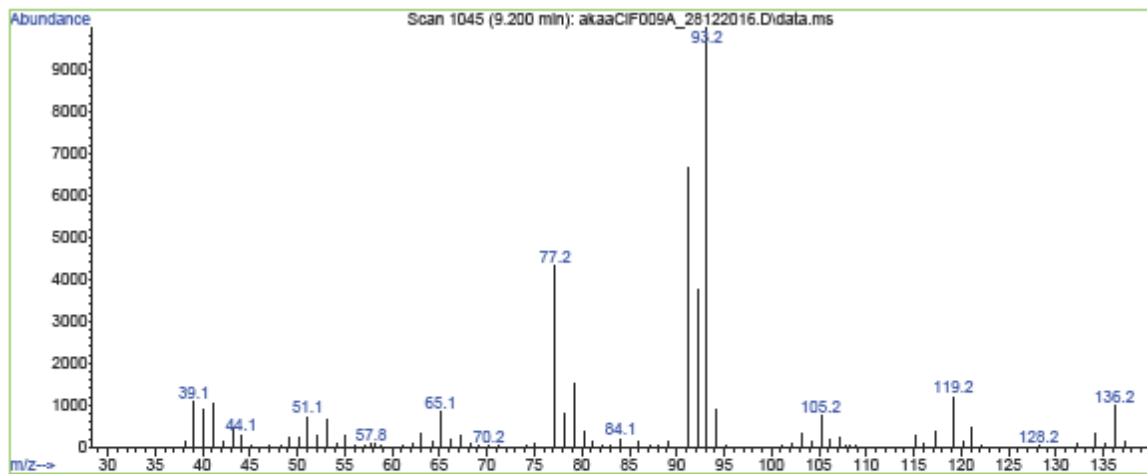
³ *CIRAD, UPR HORTSYS, F-34398, Montpellier, France*

*Corresponding author- e-mail: btorto@icipe.org

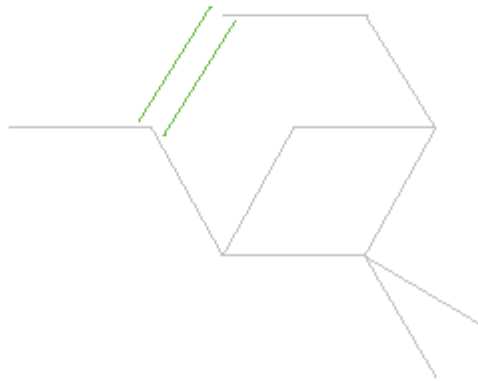
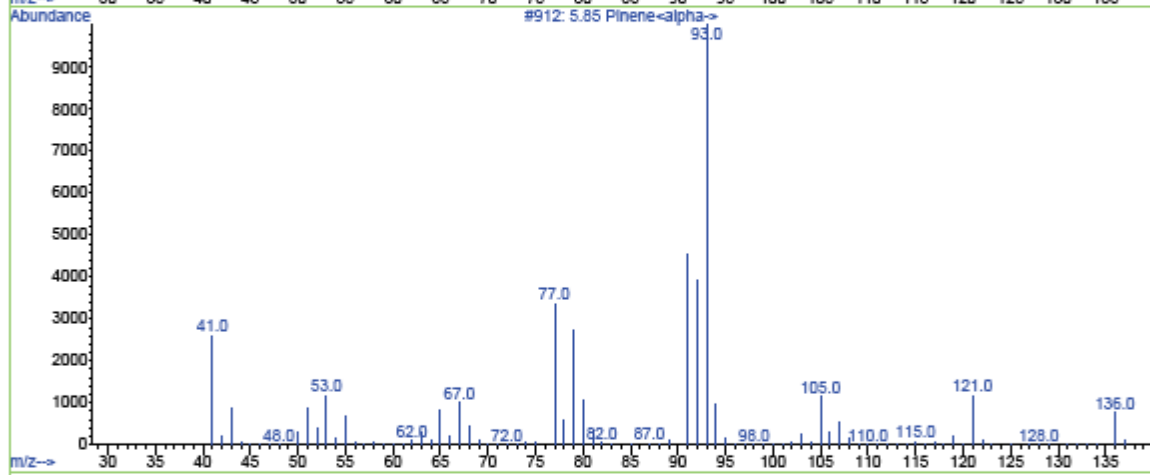
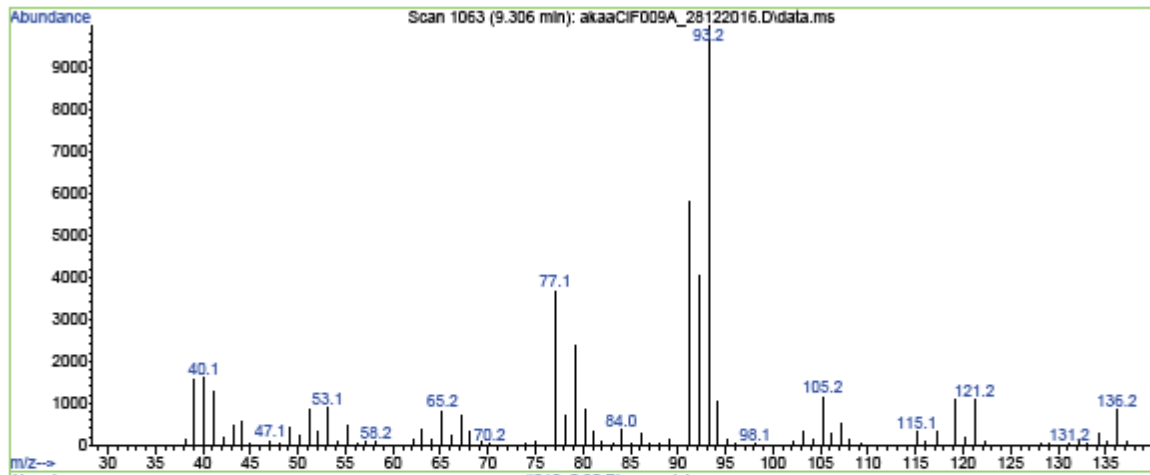
SUPPLEMENTARY MATERIAL

Mass spectra of compounds in leaf volatiles of rough lemon

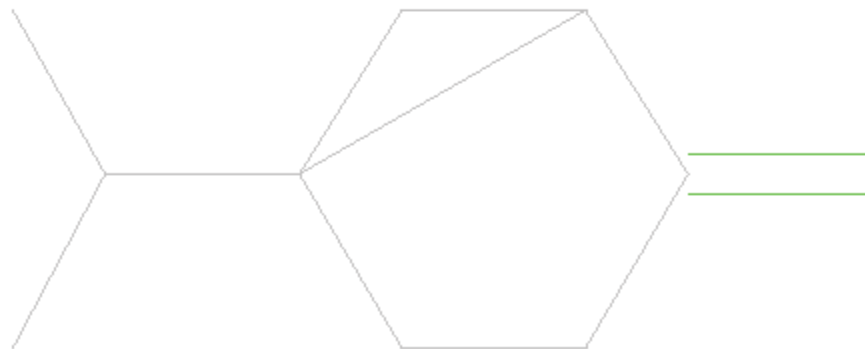
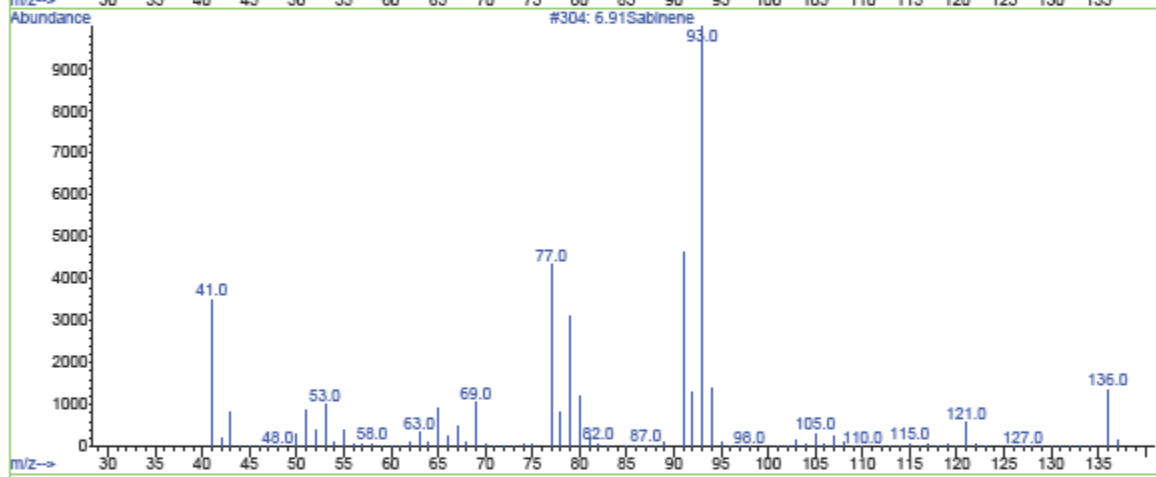
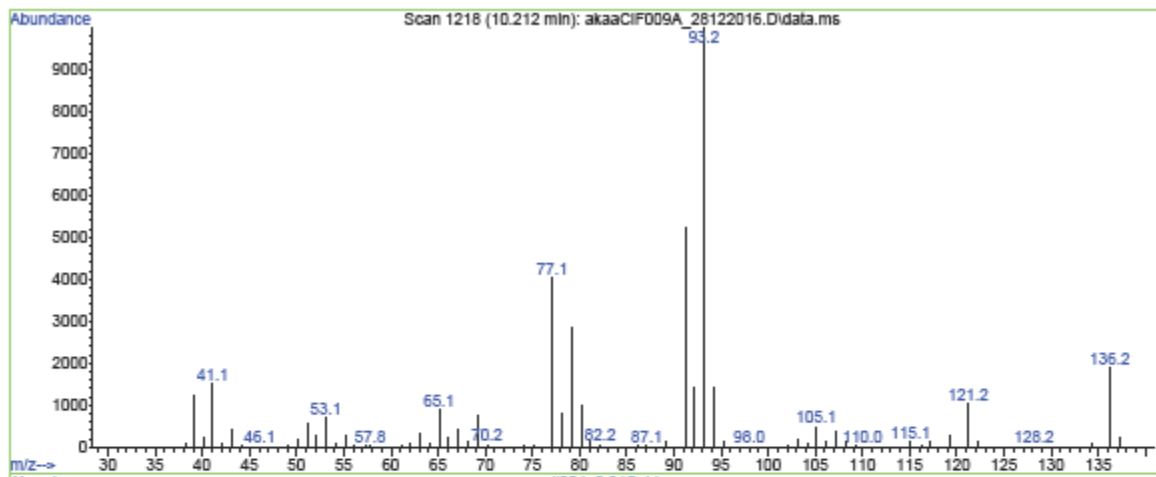
Library Searched : C:\Database\Adams2.L
Quality : 93
ID : 5.62 Thujene<alpha>



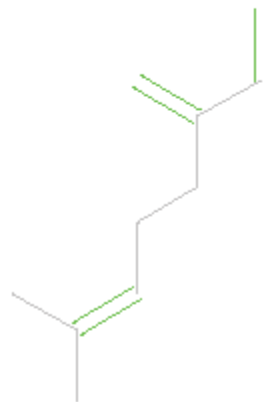
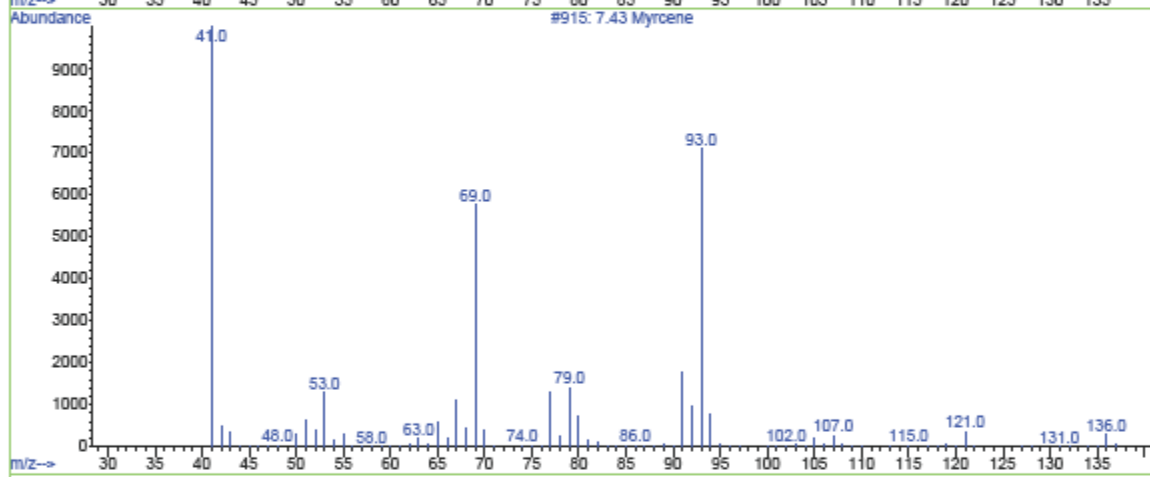
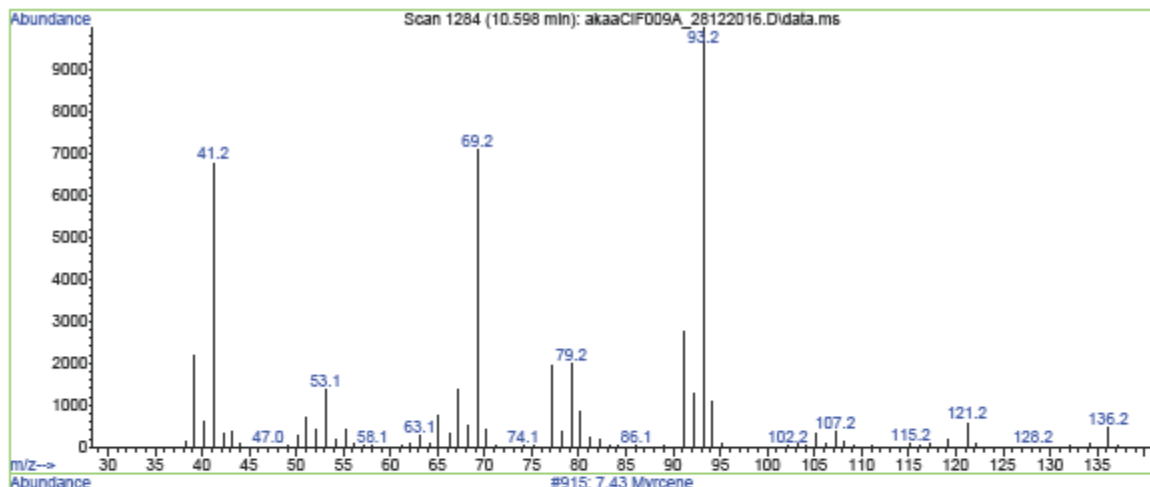
Library Searched : C:\Database\Adams2.L
Quality : 93
ID : 5.85 Pinene<alpha>



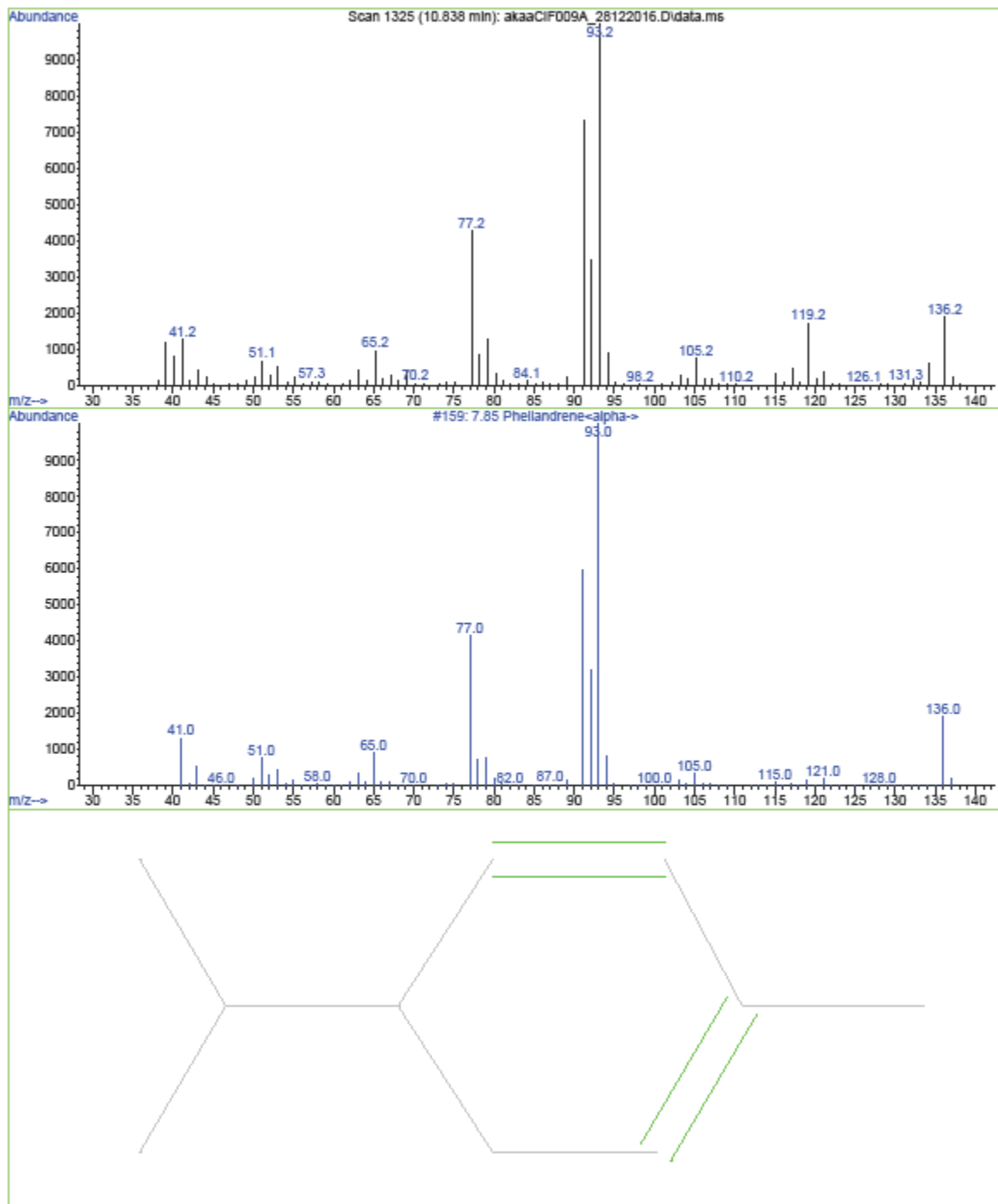
Library Searched : C:\Database\Adams2.L
Quality : 95
ID : 6.91Sabinene



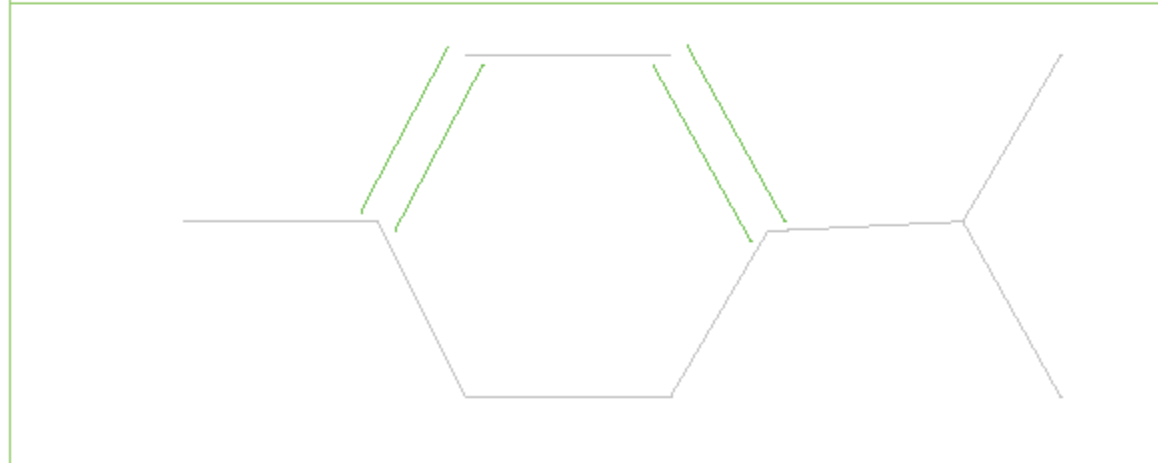
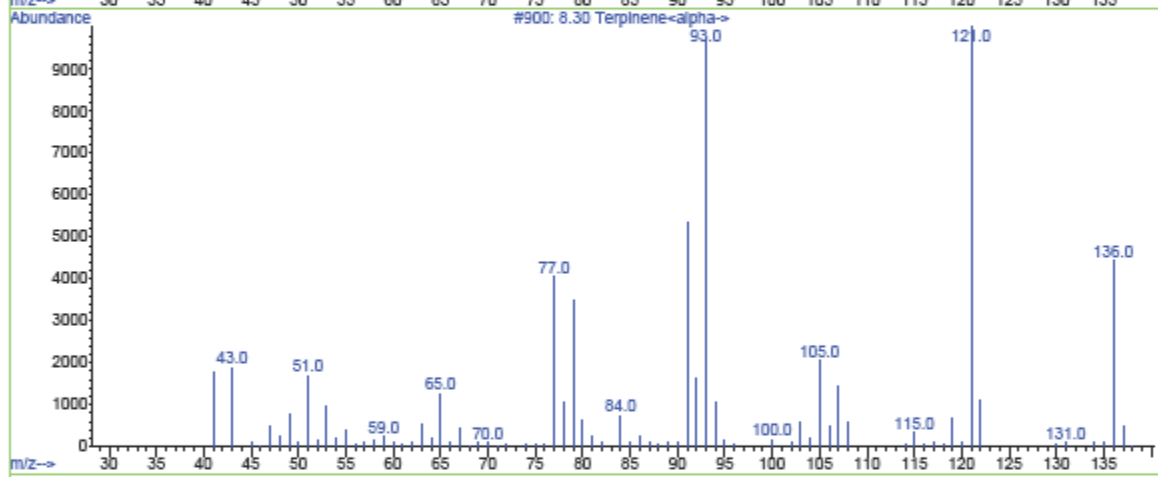
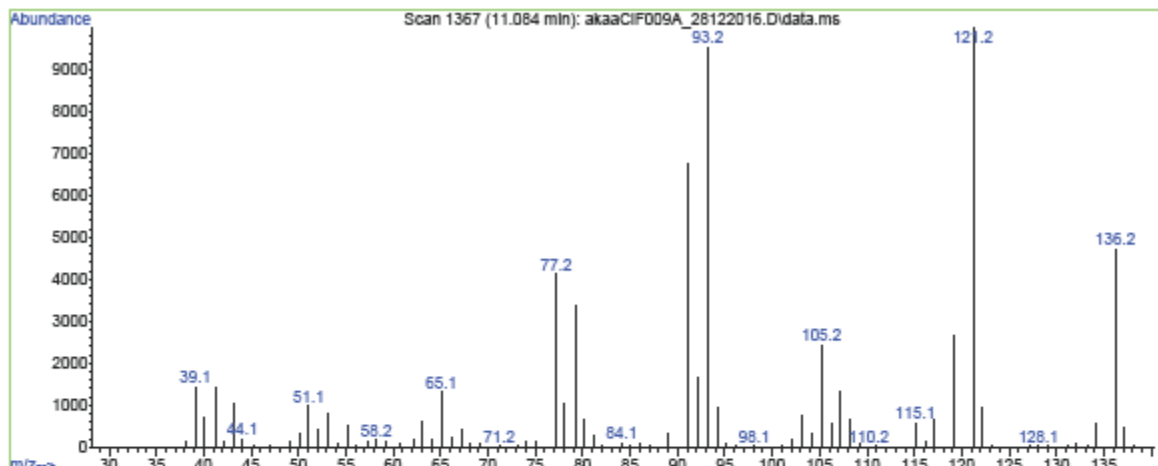
Library Searched : C:\Database\Adams2.L
Quality : 95
ID : 7.43 Myrcene



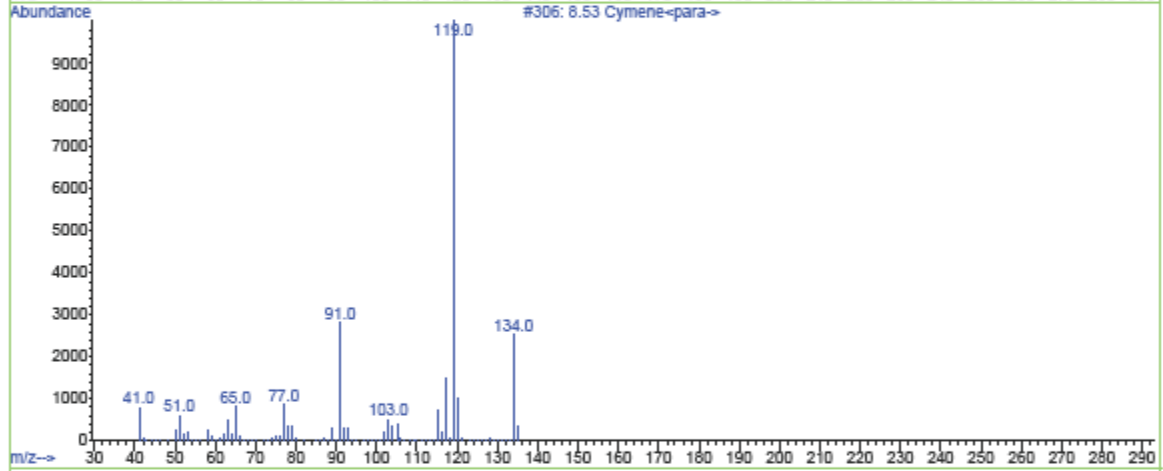
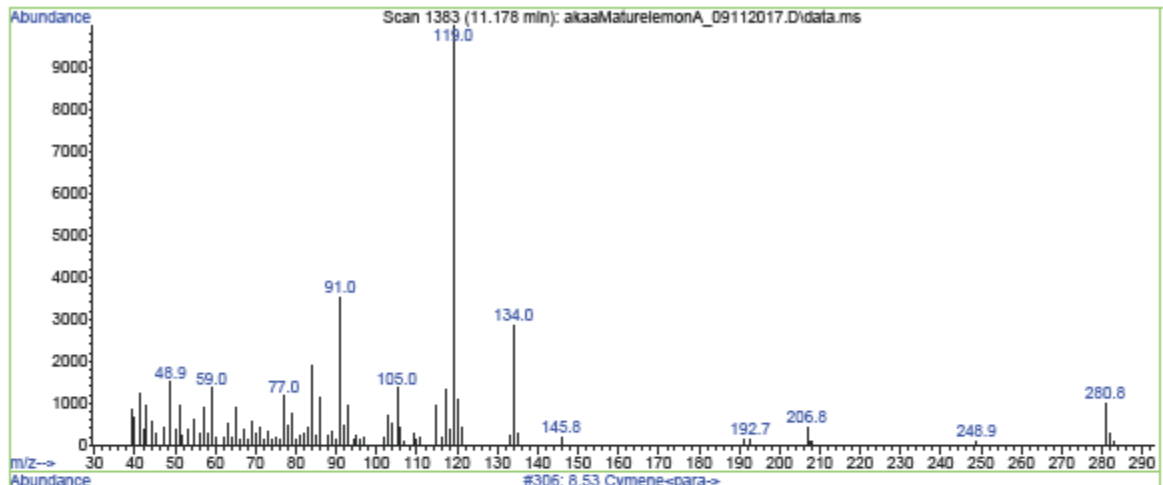
Library Searched : C:\Database\Adams2.L
Quality : 94
ID : 7.85 Phellandrene<alpha>



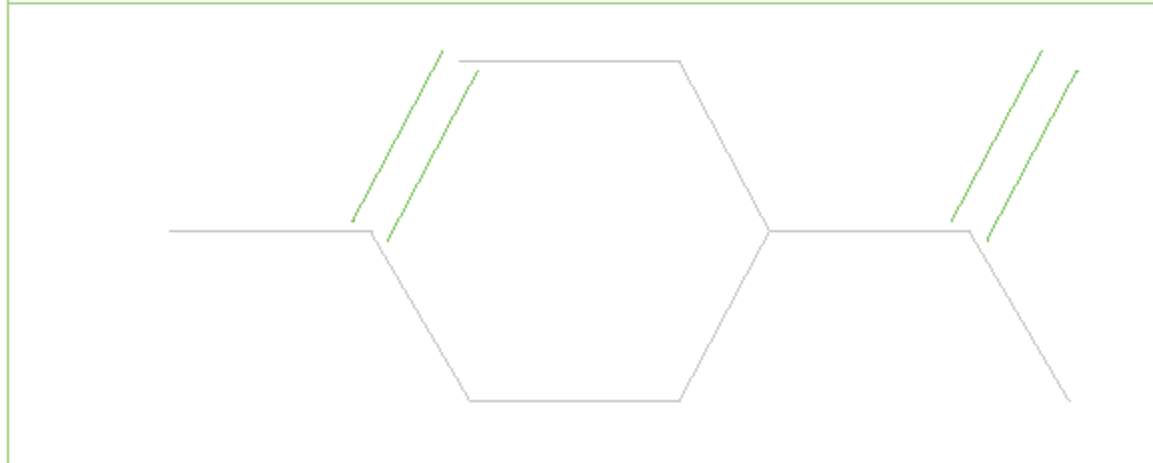
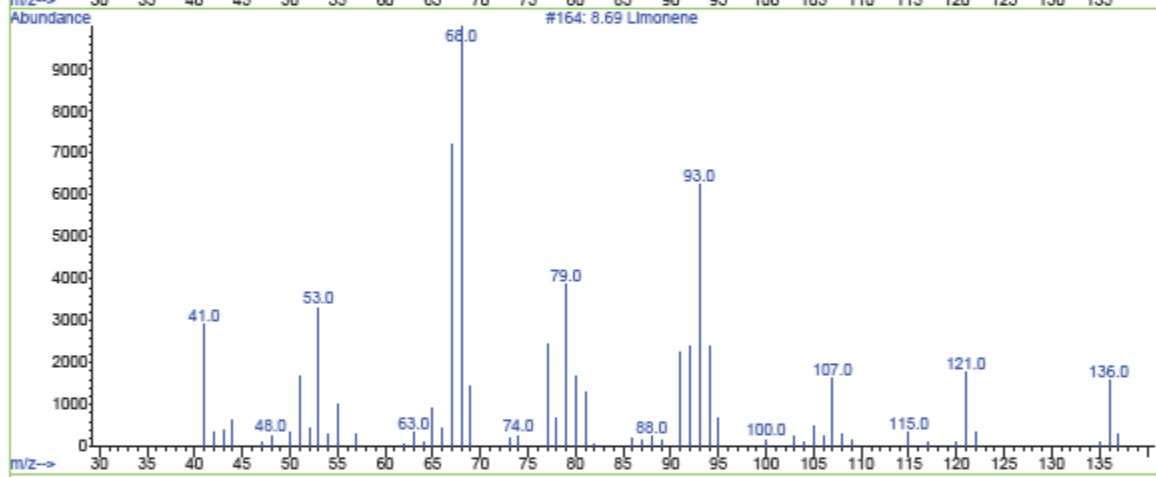
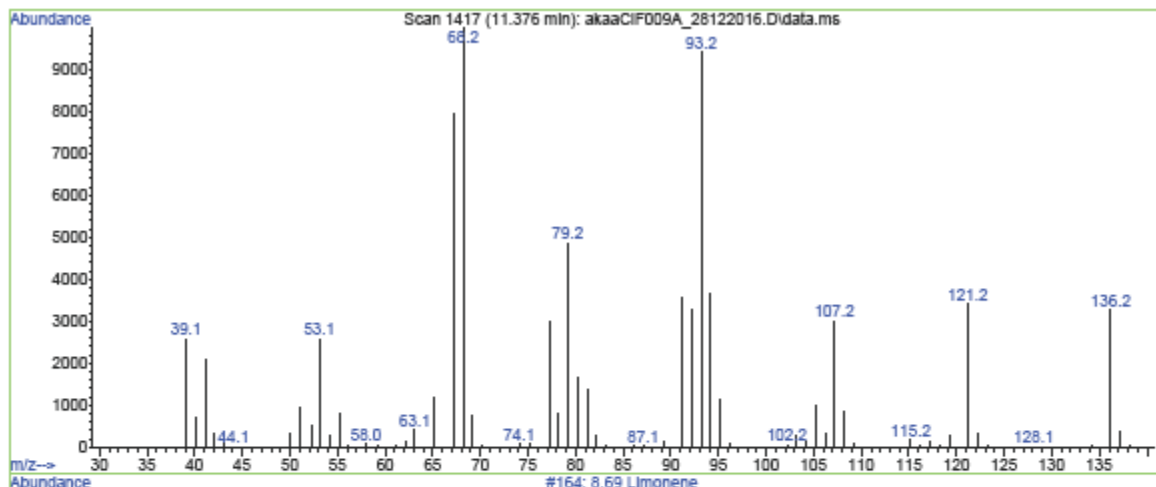
Library Searched : C:\Database\Adams2.L
Quality : 94
ID : 8.30 Terpinene<alpha>



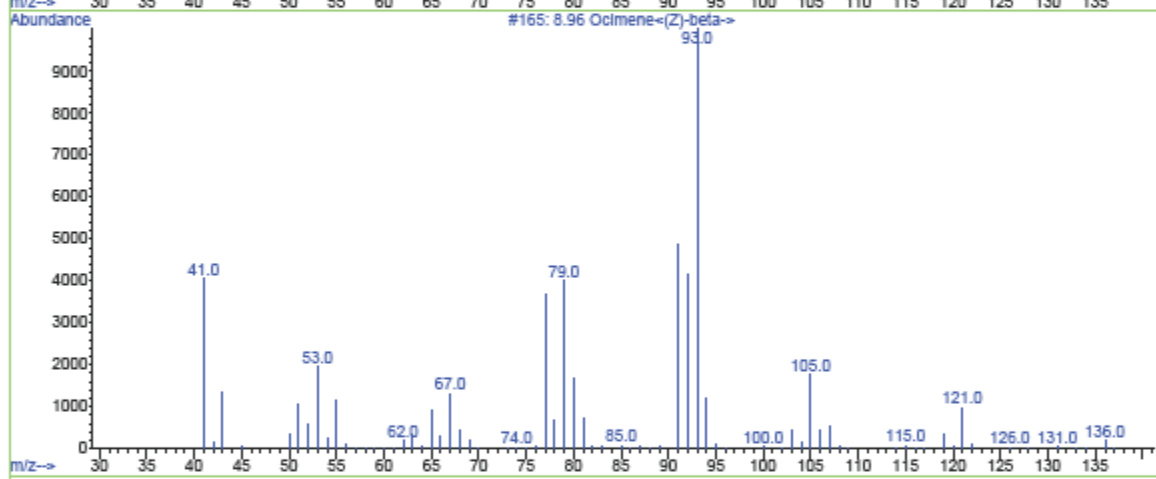
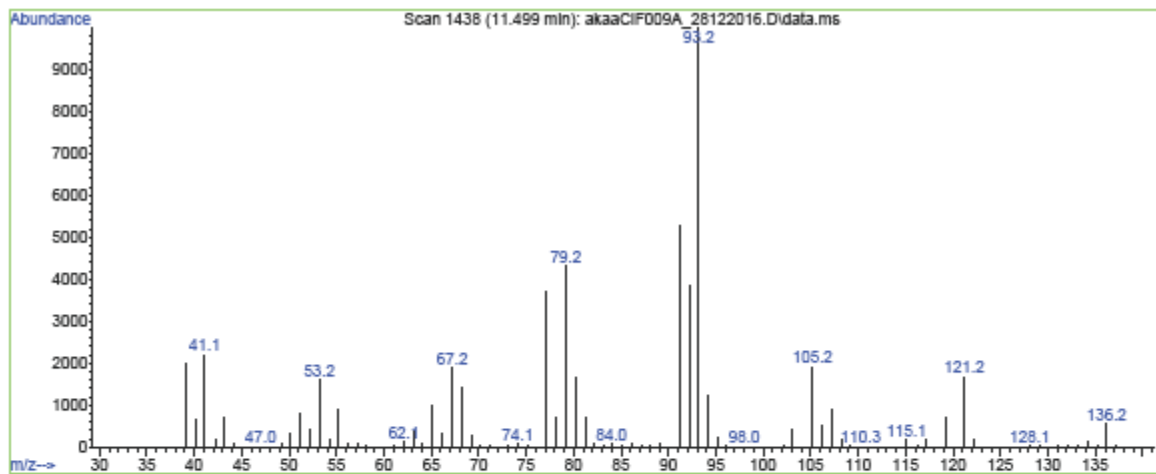
Library Searched : C:\Database\Adams2.L
Quality : 92
ID : 8.53 Cymene<para->



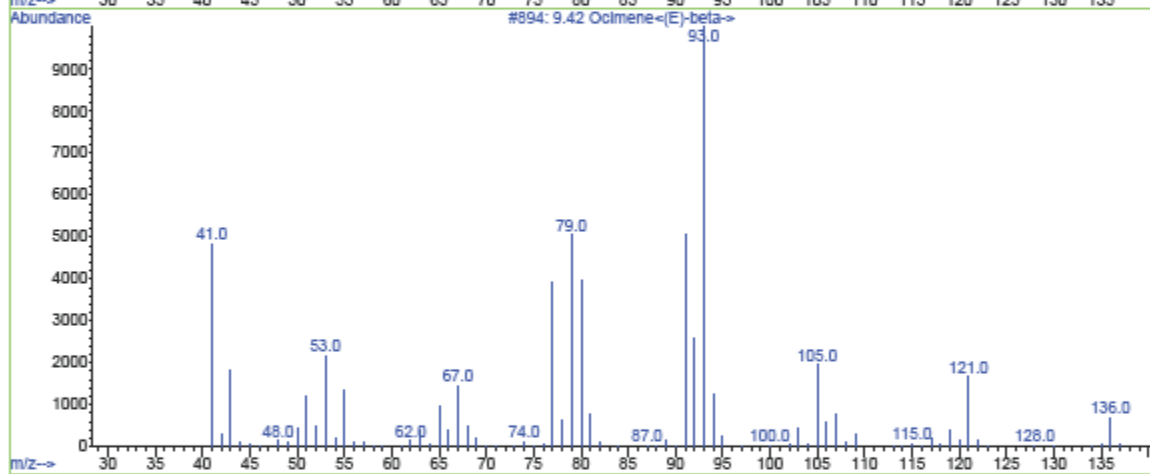
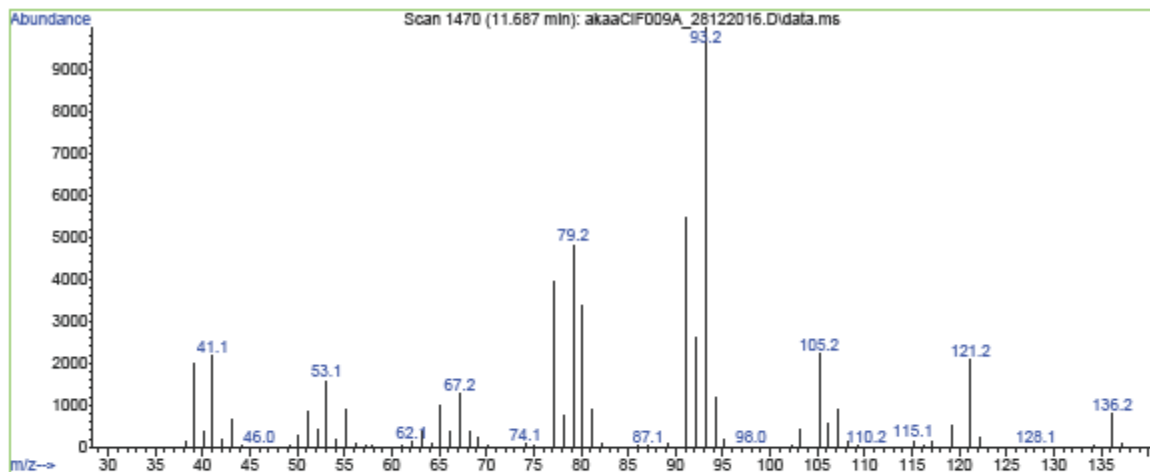
Library Searched : C:\Database\Adams2.L
Quality : 98
ID : 8.69 Limonene



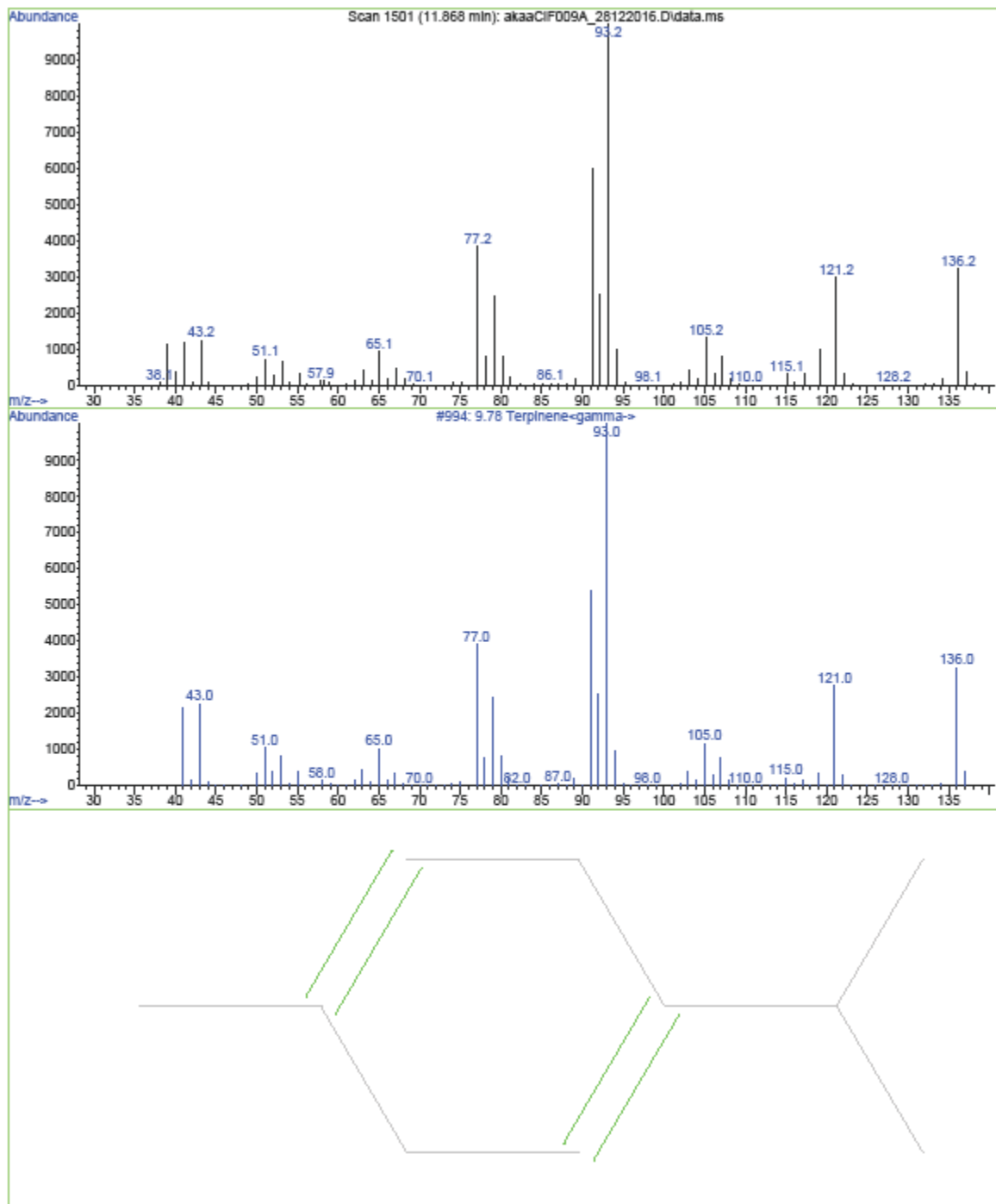
Library Searched : C:\Database\Adams2.L
Quality : 97
ID : 8.96 Ocimene<(Z)-beta->



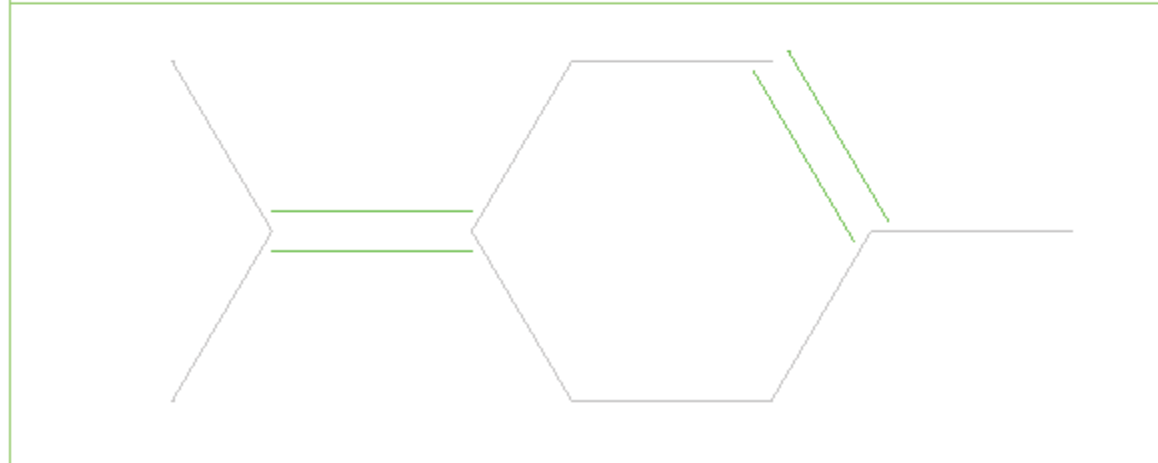
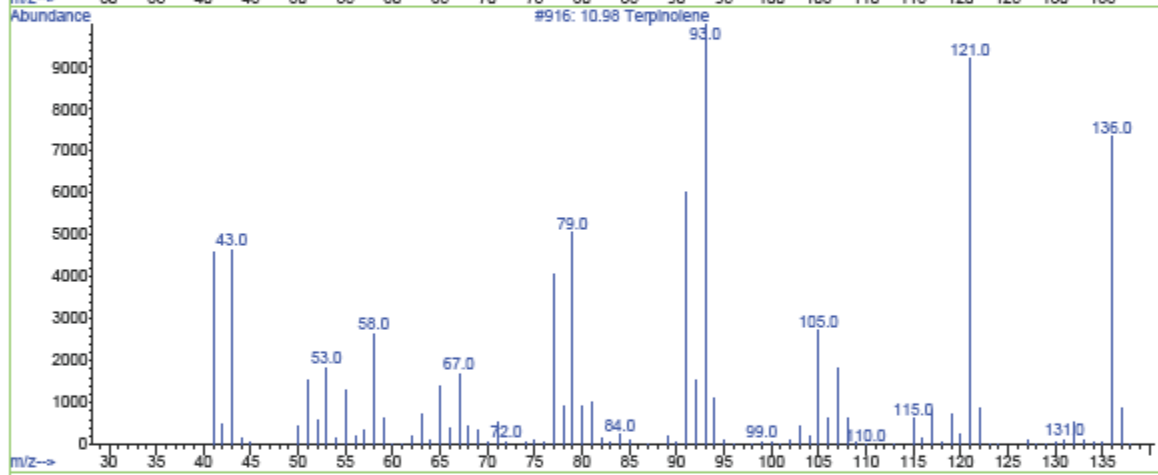
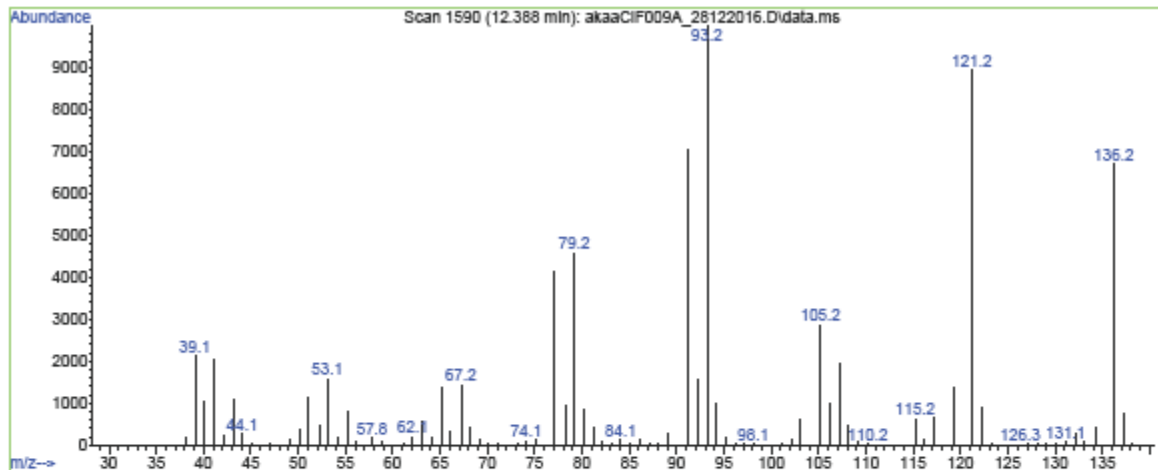
Library Searched : C:\Database\Adams2.L
Quality : 97
ID : 9.42 Ocimene<(E)-beta->



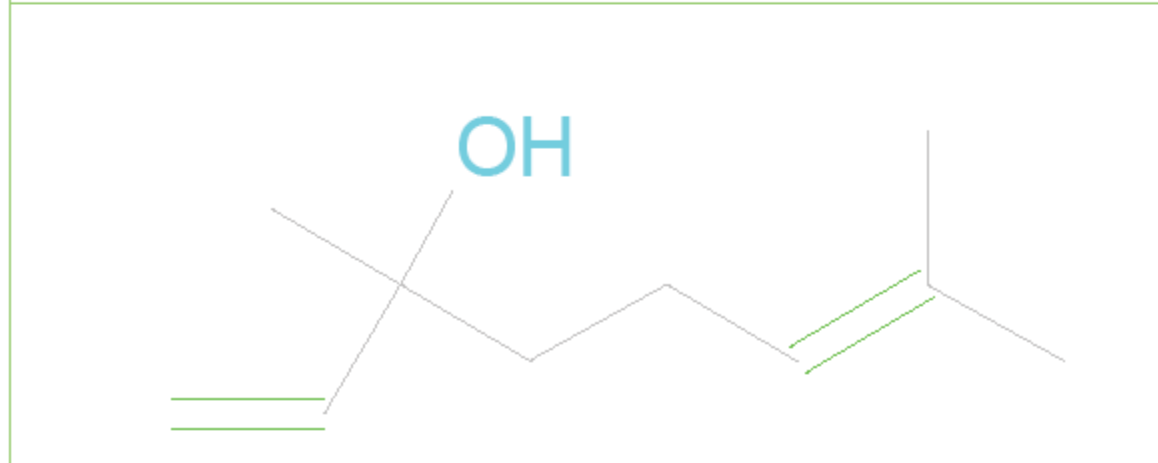
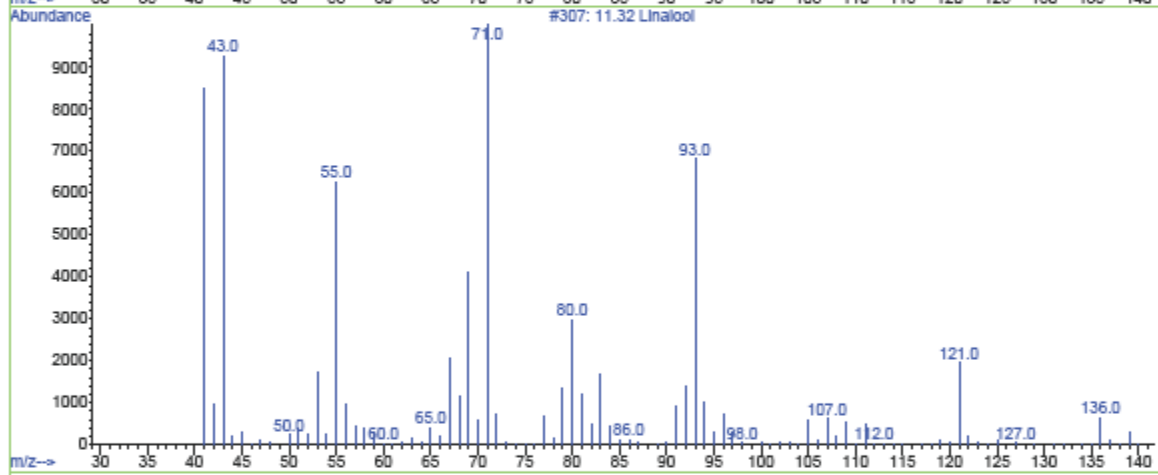
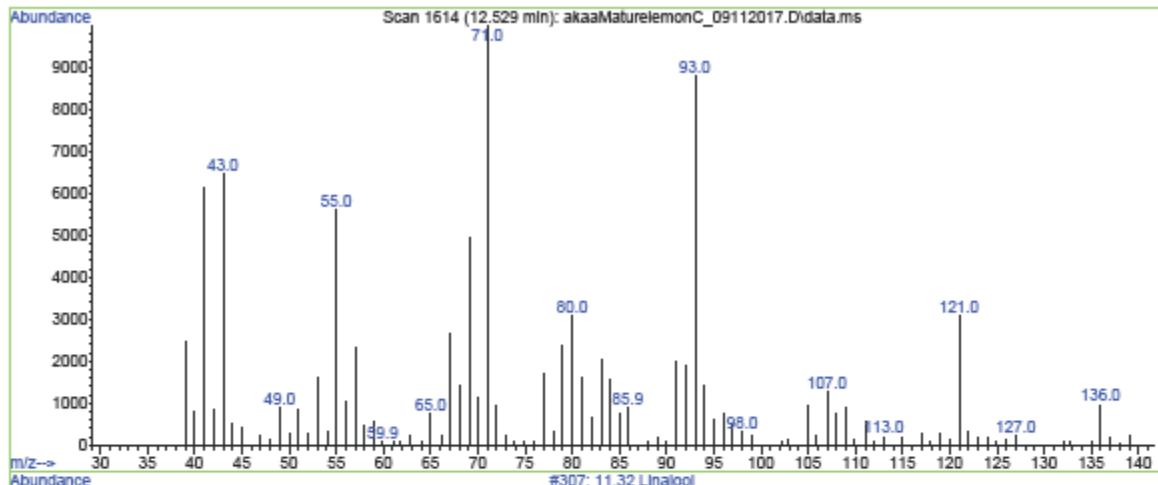
Library Searched : C:\Database\Adams2.L
Quality : 96
ID : 9.78 Terpinene-<gamma>



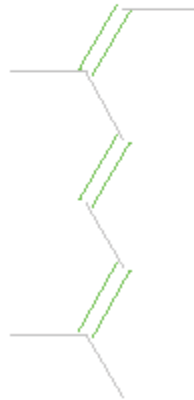
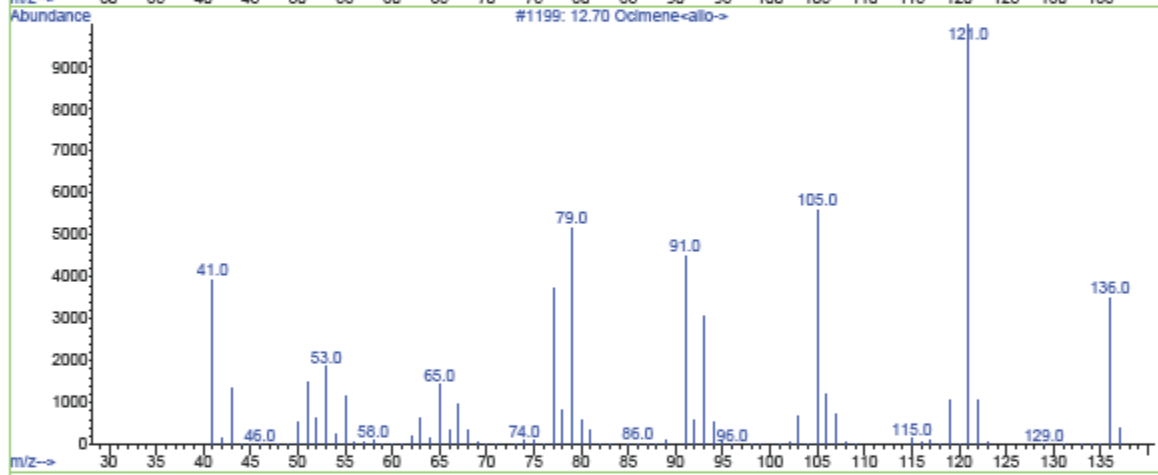
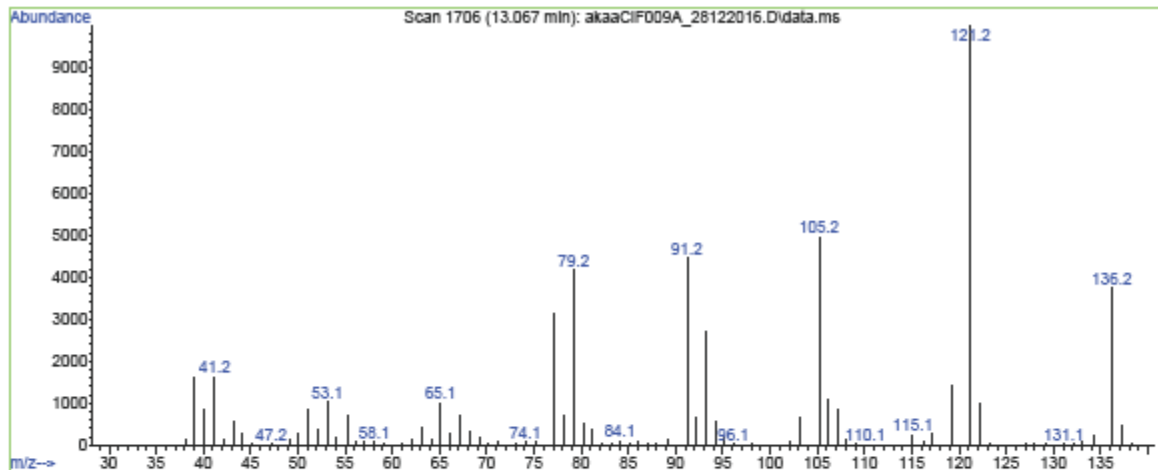
Library Searched : C:\Database\Adams2.L
Quality : 97
ID : 10.98 Terpinolene



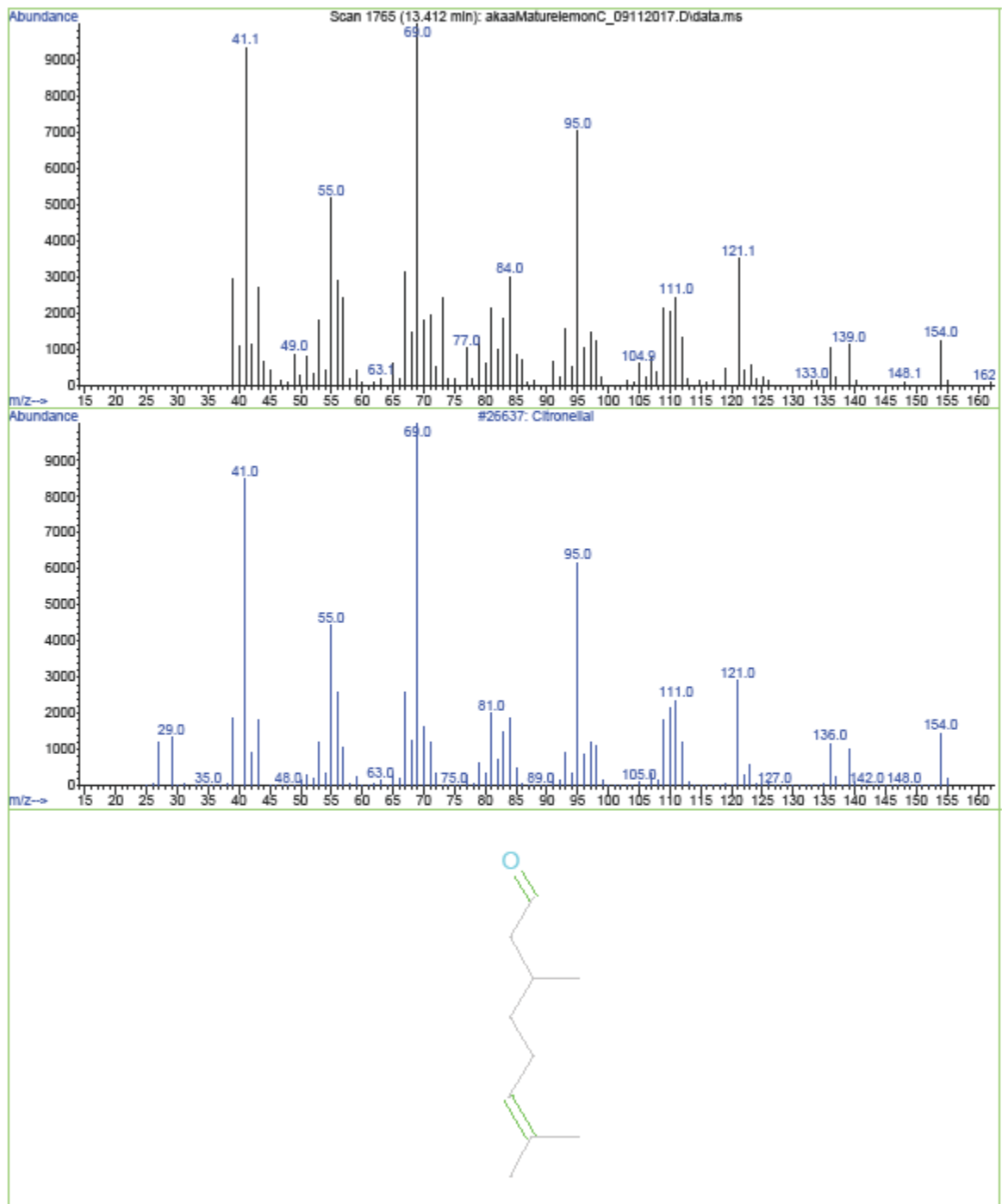
Library Searched : C:\Database\Adams2.L
Quality : 94
ID : 11.32 Linalool



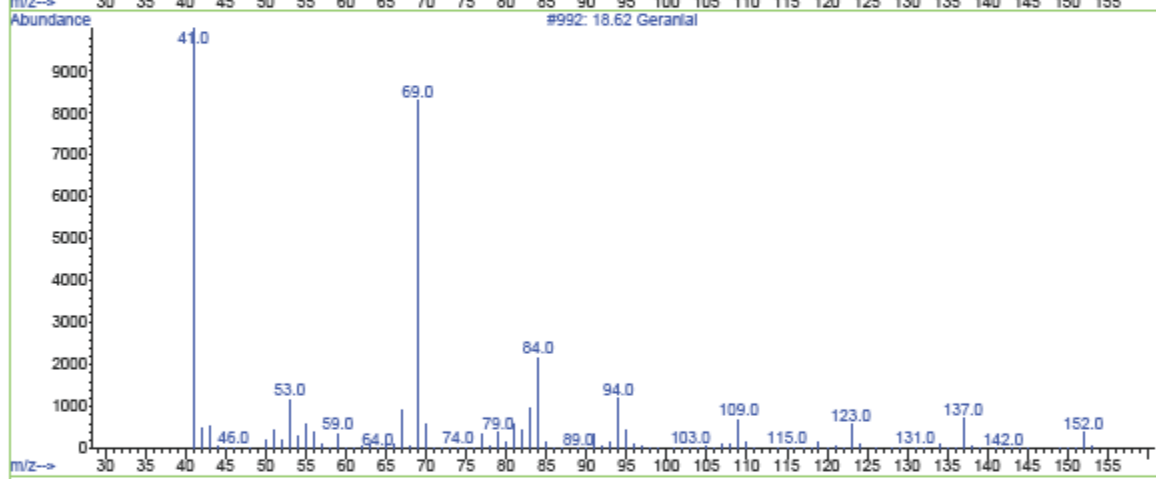
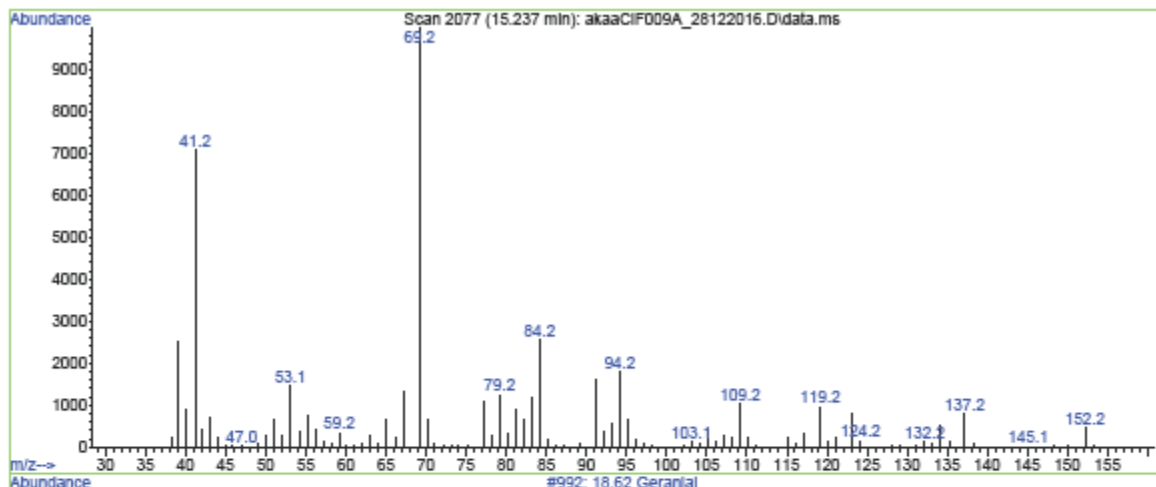
Library Searched : C:\Database\Adams2.L
Quality : 98
ID : 12.70 Ocimene<allo->



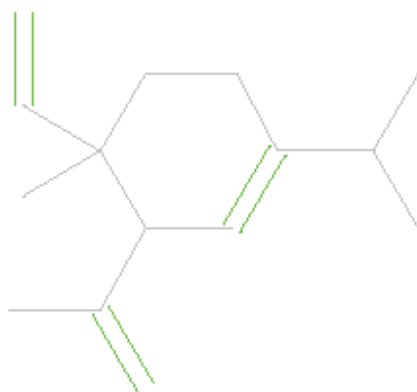
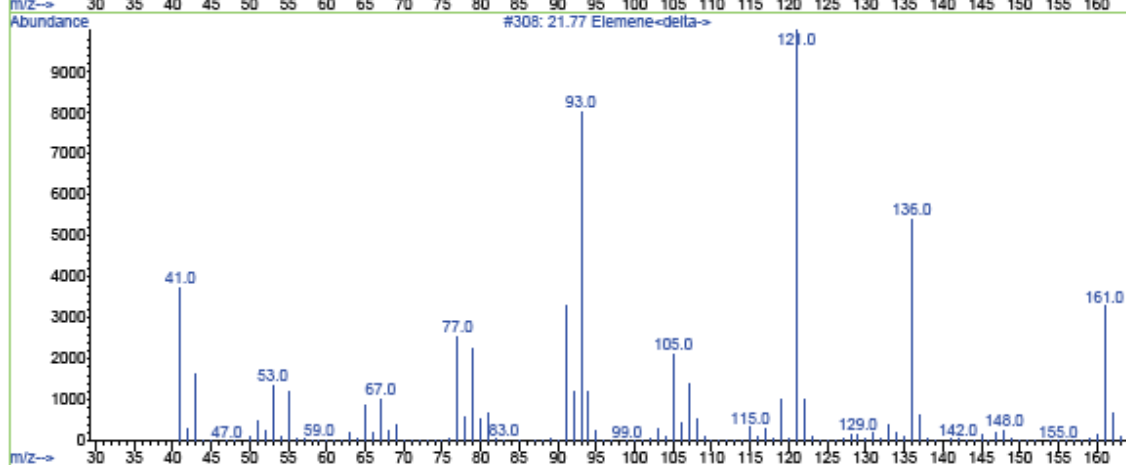
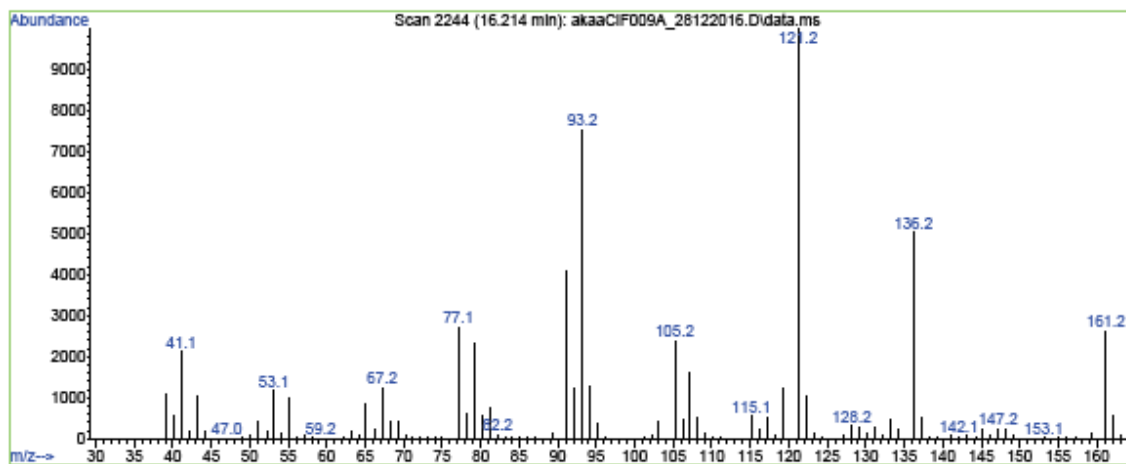
Library Searched : C:\Database\NIST11.L
Quality : 98
ID : Citronellal



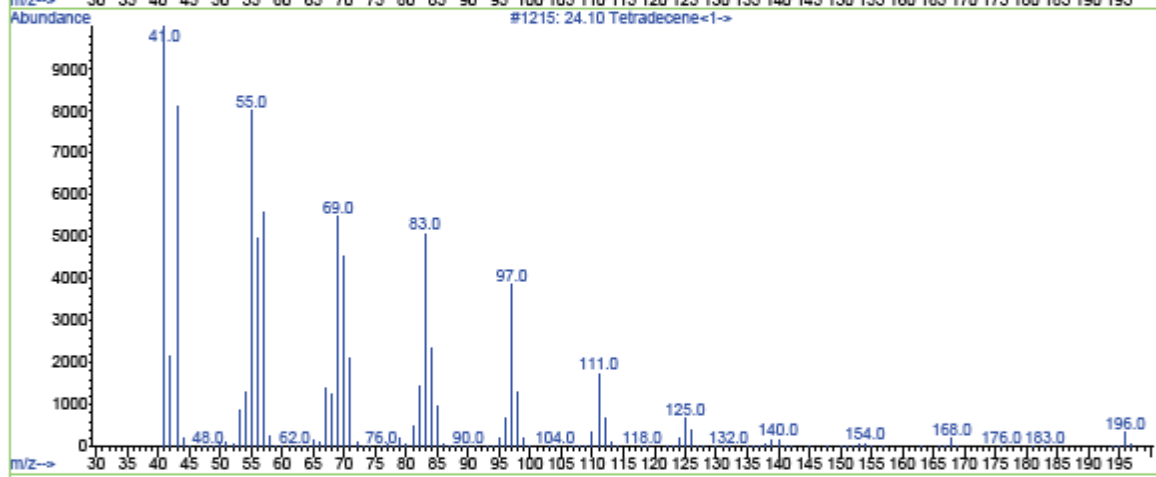
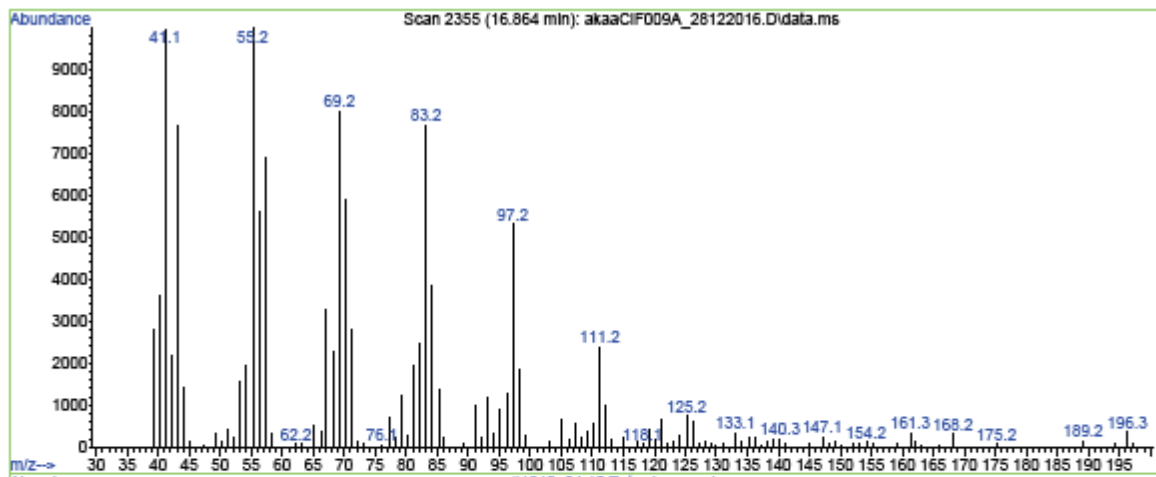
Library Searched : C:\Database\Adams2.L
Quality : 90
ID : 18.62 Geranial



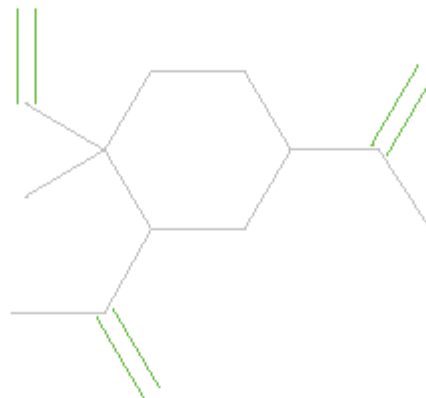
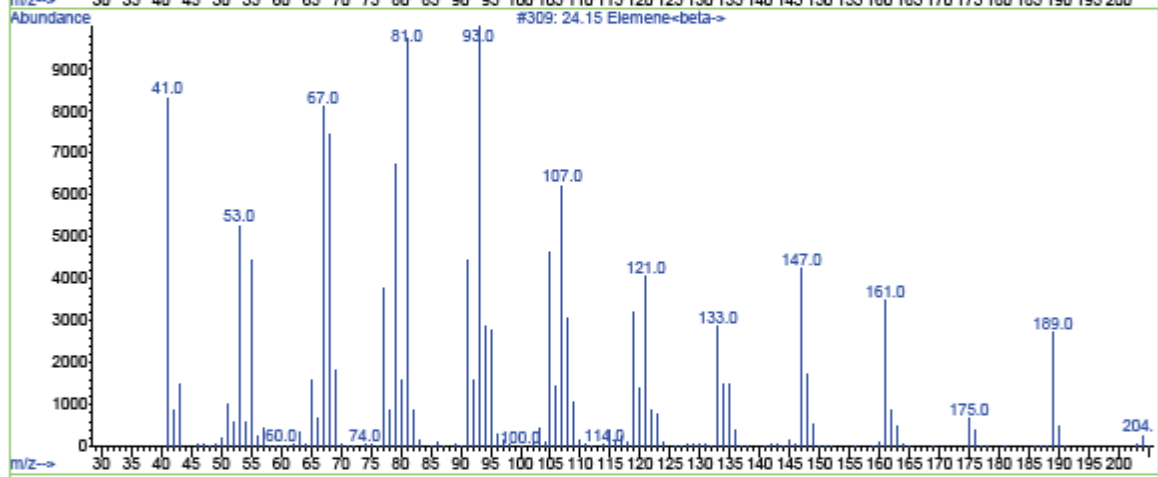
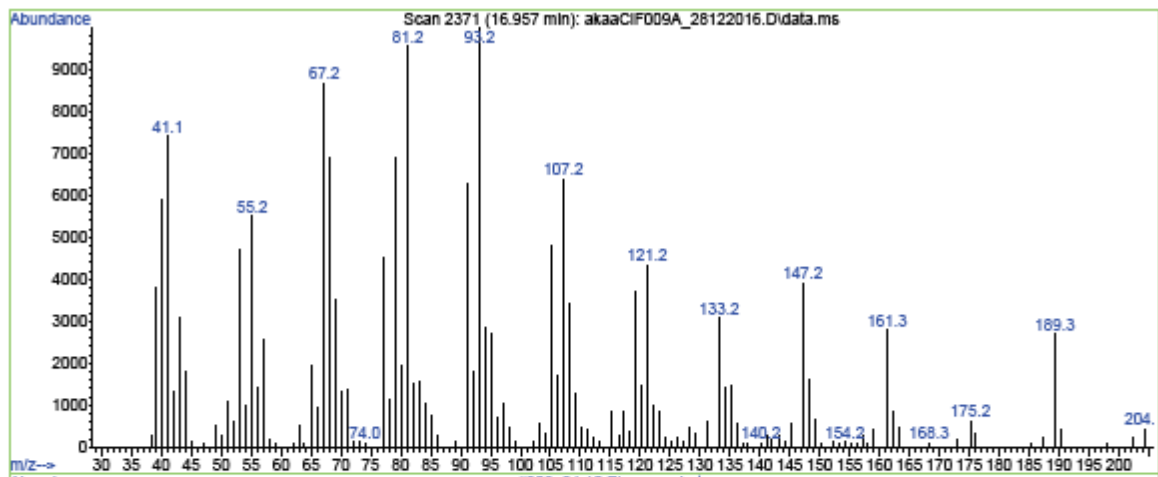
Library Searched : C:\Database\Adams2.L
Quality : 99
ID : 21.77 Elemene<delta>



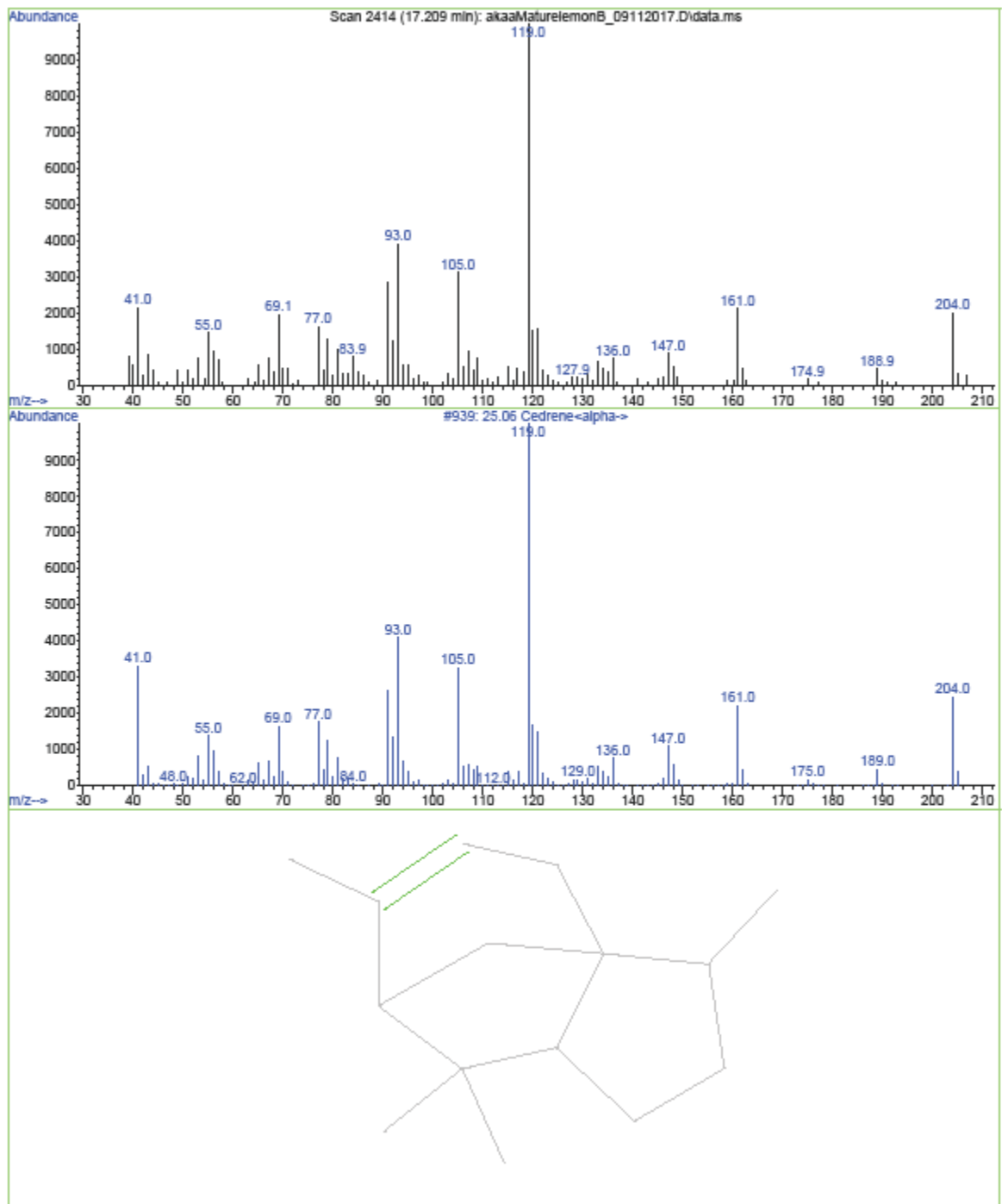
Library Searched : C:\Database\Adams2.L
Quality : 96
ID : 24.10 Tetradecene<1->



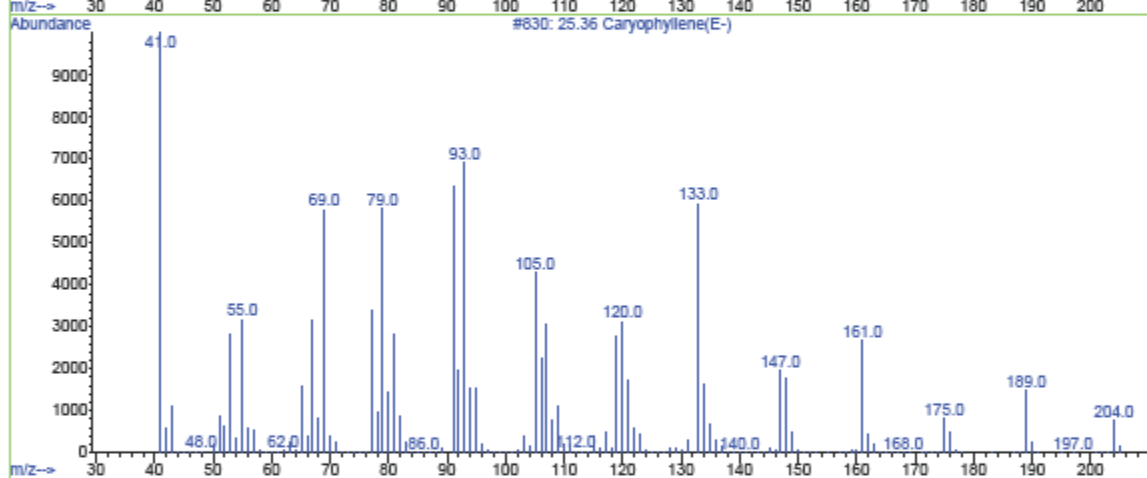
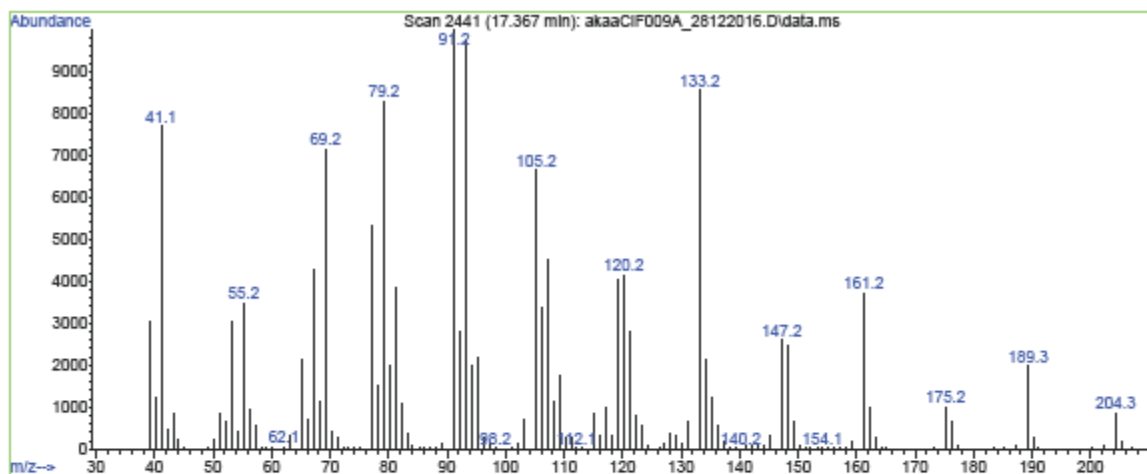
Library Searched : C:\Database\Adams2.L
Quality : 99
ID : 24.15 Elemene<beta>



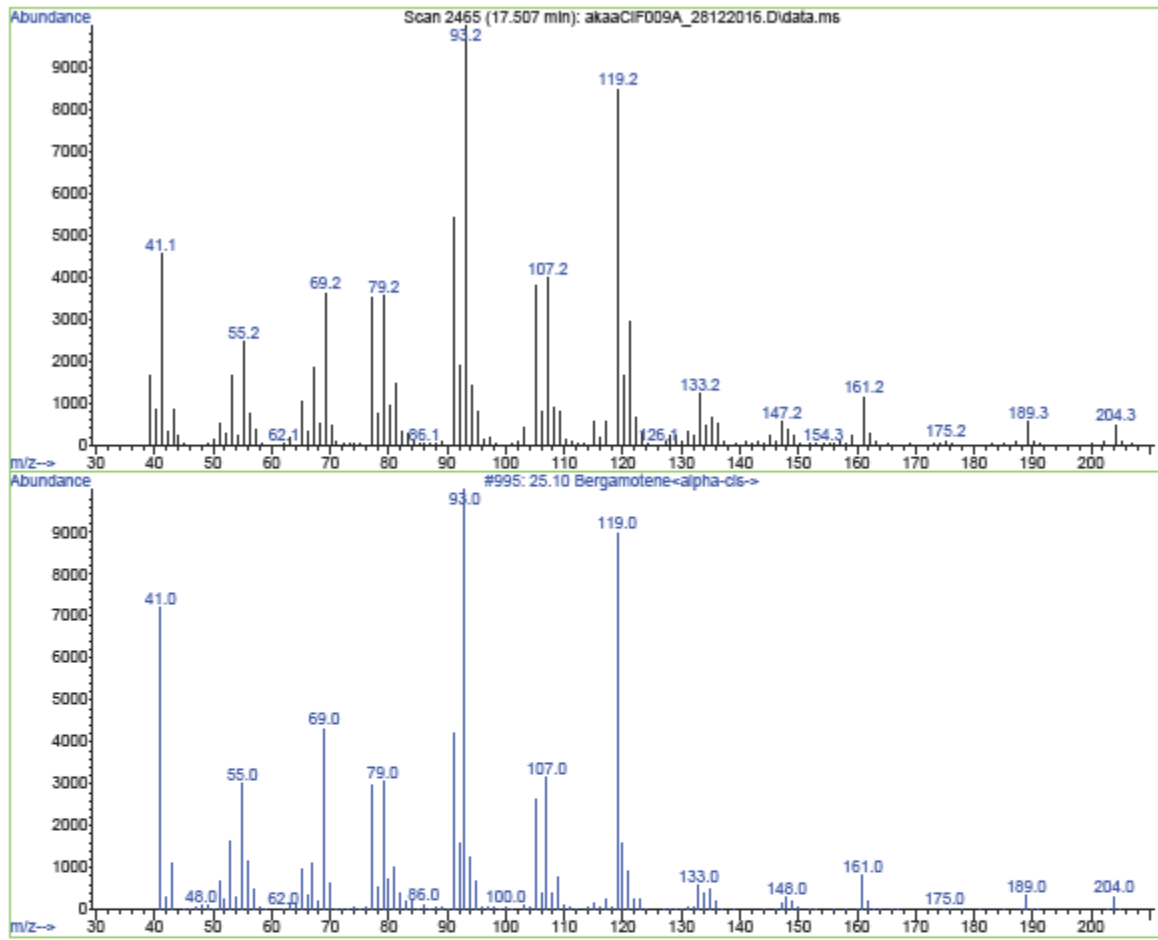
Library Searched : C:\Database\Adams2.L
Quality : 99
ID : 25.06 Cedrene<alpha>



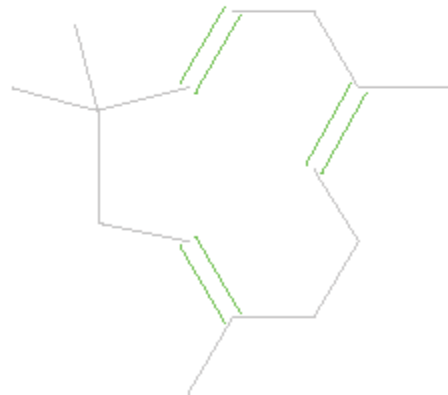
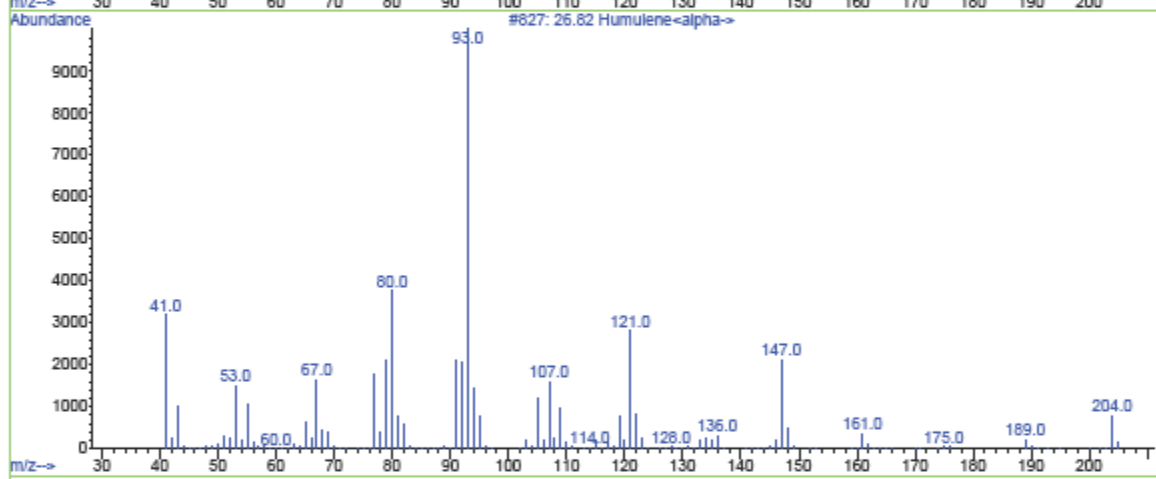
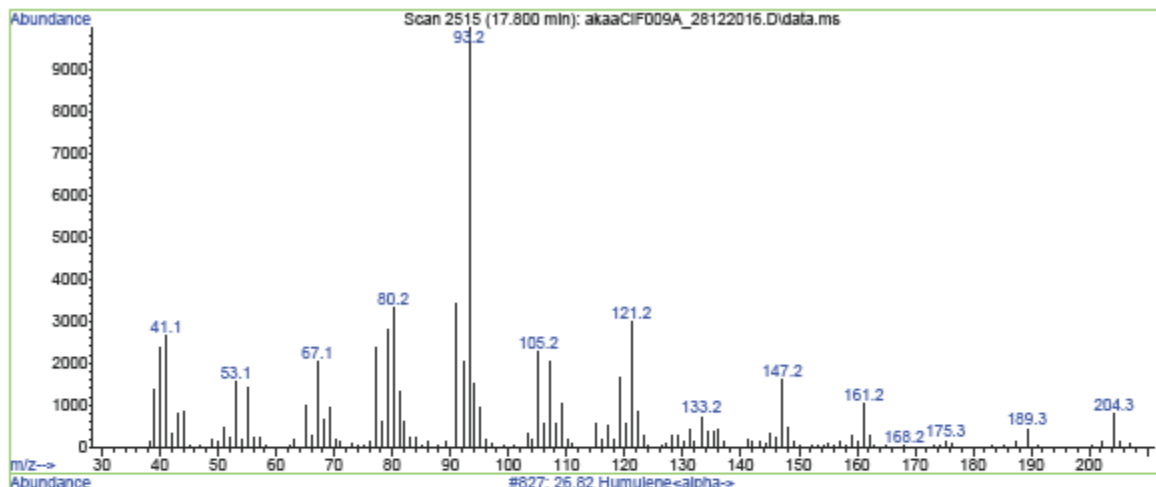
Library Searched : C:\Database\Adams2.L
Quality : 99
ID : 25.36 Caryophyllene(E-)



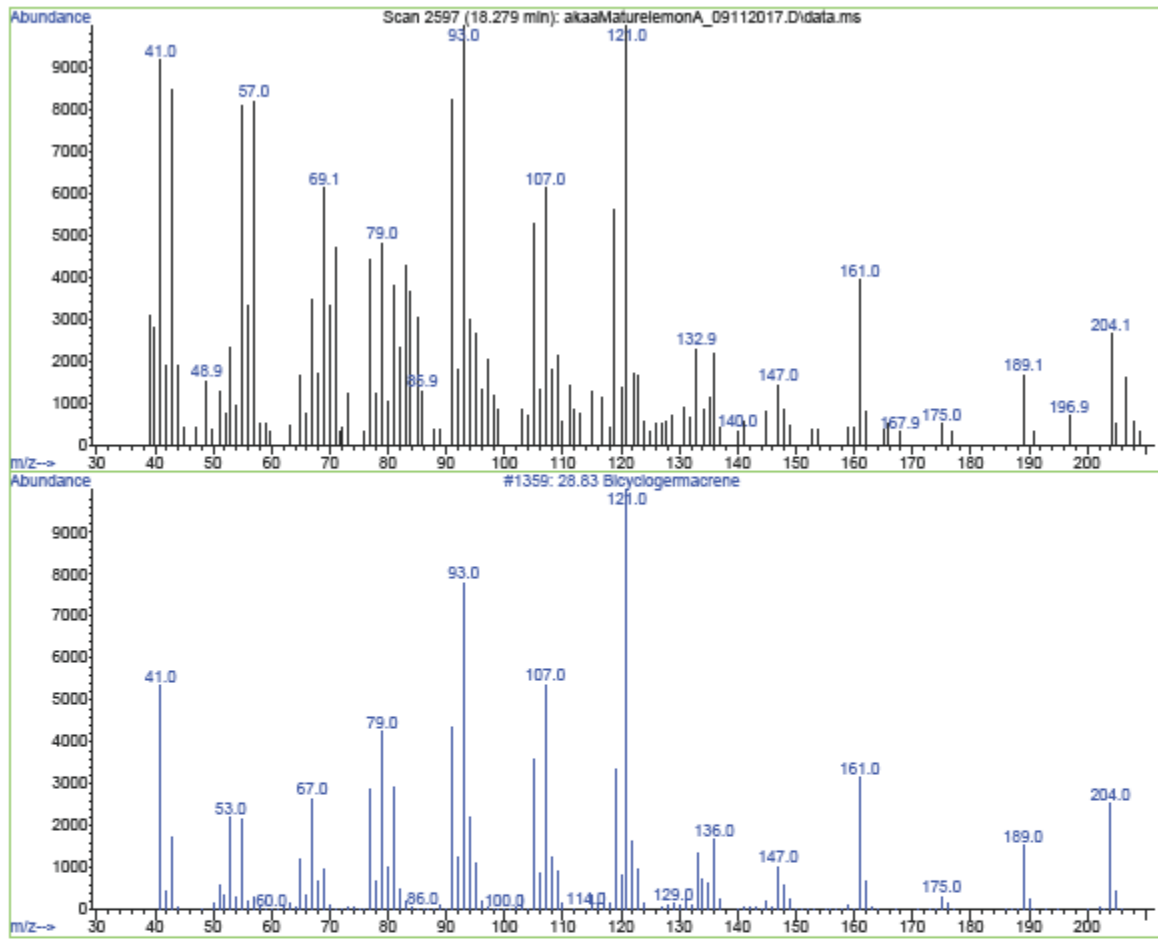
Library Searched : C:\Database\Adams2.L
Quality : 97
ID : 25.10 Bergamotene<alpha-cis->



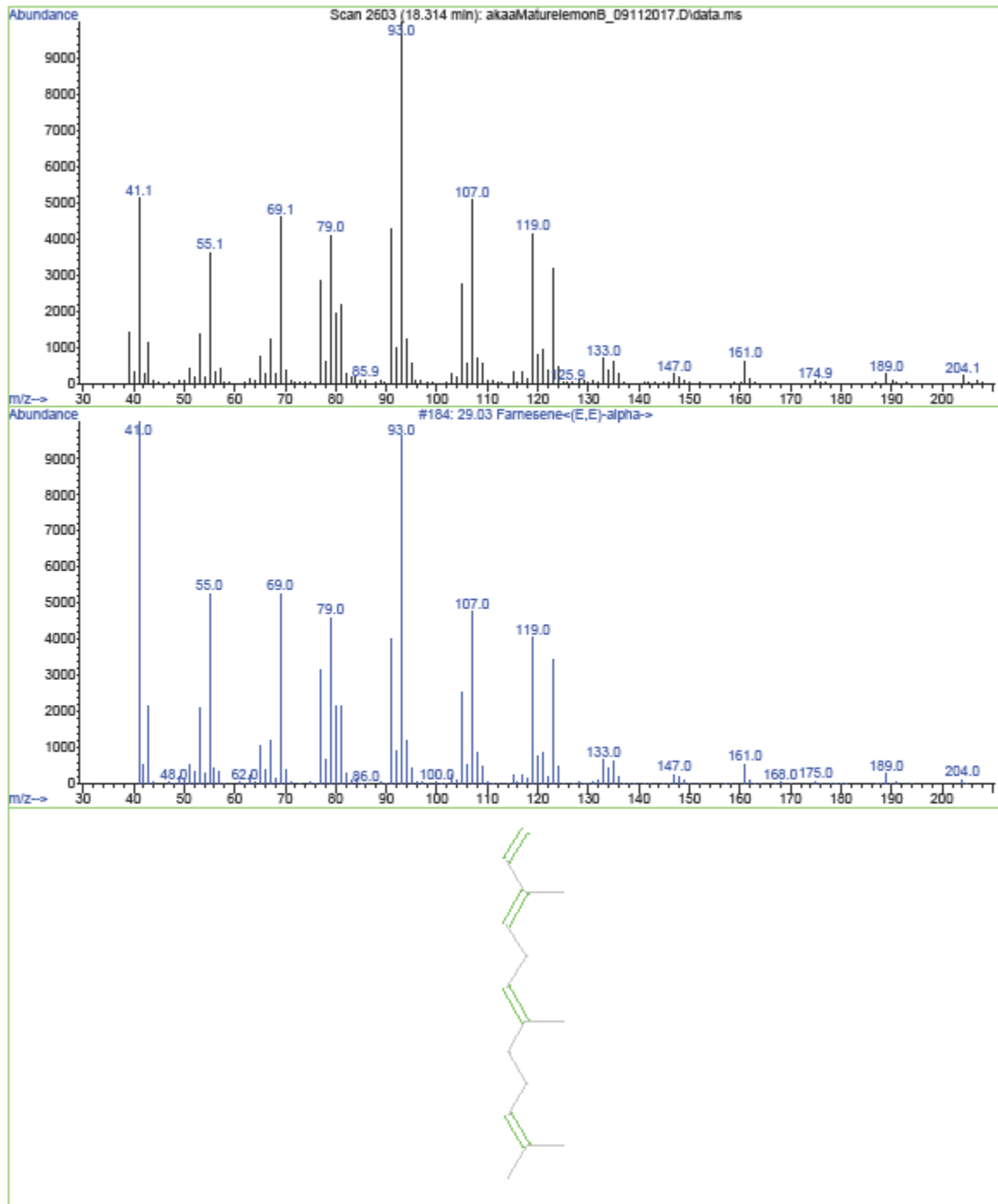
Library Searched : C:\Database\Adams2.L
Quality : 93
ID : 26.82 Humulene<alpha>



Library Searched : C:\Database\Adams2.L
Quality : 98
ID : 28.83 Bicyclogermacrene



Library Searched : C:\Database\Adams2.L
Quality : 95
ID : 29.03 Farnesene<(E,E)-alpha->



Library Searched : C:\Database\Adams2.L
Quality : 99
ID : 29.04 Bisabolene<beta->

