

# Supplementary online material

## ESM10

Title:

### Male characteristics as predictors of genital color and display variation in vervet monkeys

Journal: Behavioral Ecology and Sociobiology

Mirjam M. I. Young<sup>1,2,3</sup>, Sandra Winters<sup>4</sup>, Christopher Young<sup>3,5,6</sup>, Brigitte M. Weiß<sup>1,2</sup>, Jolyon Troscianko<sup>7</sup>, André Ganswindt<sup>6,8,9</sup>, Louise Barrett<sup>3,5</sup>, S. Peter Henzi<sup>3,5</sup>, James P. Higham<sup>4</sup>, Anja Widdig<sup>1,2</sup>

<sup>1</sup>Research Group Primate Behavioural Ecology, Department of Human Behavior, Ecology and Culture, Max-Planck-Institute for Evolutionary Anthropology, Deutscher Platz 6, 04103 Leipzig, Germany,

<sup>2</sup>Behavioural Ecology, Institute of Biology, Faculty of Life Sciences, Leipzig University, Talstr. 33, 04103 Leipzig, Germany,

<sup>3</sup>Applied Behavioural Ecology and Ecosystems Research Unit, University of South Africa, Christiaan de Wet Road & Pioneer Avenue, Florida, 1709, Gauteng, South Africa,

<sup>4</sup>Department of Anthropology, New York University, 25 Waverly Place, New York, NY 10003, USA,

<sup>5</sup>Department of Psychology, University of Lethbridge, 4401 University Drive, Lethbridge, Alberta, T1K 3M4, Canada,

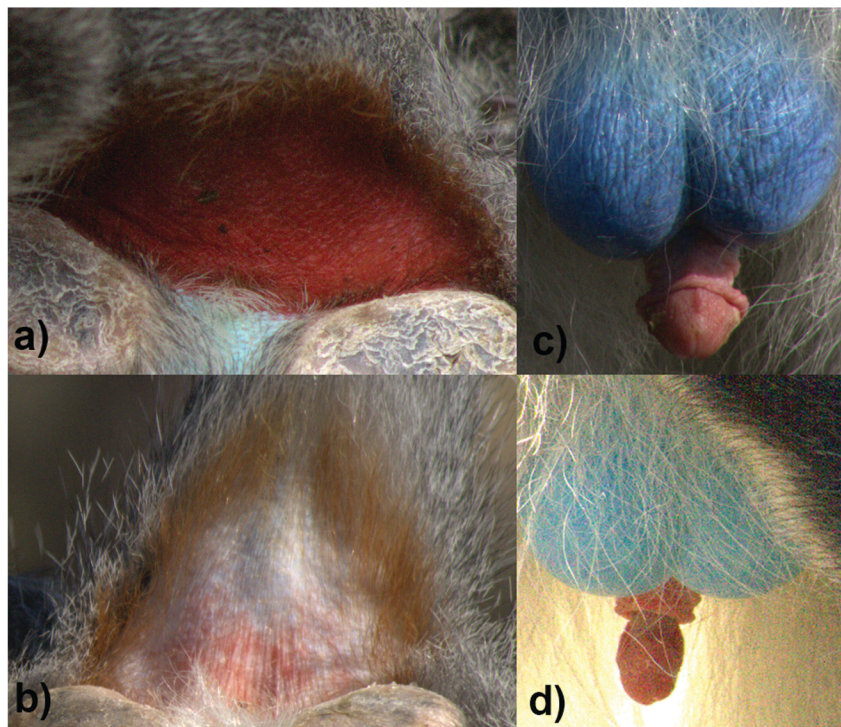
<sup>6</sup>Mammal Research Institute, Department of Zoology and Entomology, Faculty of Natural and Agricultural Science, University of Pretoria, Private Bag X20, Hatfield 0028, South Africa,

<sup>7</sup>Science and Engineering Research Support Facility (SERSF), University of Exeter, Penryn Campus, Penryn, Cornwall, TR10 9FE, UK,

<sup>8</sup>Endocrine Research Laboratory, Department of Anatomy and Physiology, Faculty of Veterinary Science, University of Pretoria, Private Bag X04, Onderstepoort 0110, South Africa,

<sup>9</sup>Centre for Veterinary Wildlife Studies, Faculty of Veterinary Science, University of Pretoria, Private Bag X04, Onderstepoort 0110, South Africa.

Address correspondence to Mirjam M. I. Young at the address above, or e-mail: mirjam\_young@eva.mpg.de



**Fig. S9**

**Color variation of perianal area a) redder and b) less red; and color variation of the scrotum c) bluer and d) less blue. Photos are standardized for lighting**