

Supplementary material

Table S1: Primers that were used for ITS sequencing.

Name of Primer	Sequences (5' to 3')	Region	References
ITS1	TCCGTAGGTGAACCTGCGG	~2170 (F)	White et al. 1990
ITS4	TCCTCCGCTTATTGATATGC	~2695 (R)	White et al. 1990

Table S2: Primers that were used for 18S rRNA sequencing.

Name of Primer	Sequences (5' to 3')	Region	References
SR1	TACCTGGTTGATCCTGCCAG	1-20 (F)	Nakayama et al. 1996
SR12	CCTCCGCAGGTTACCTAC	1727-1746 (R)	Nakayama et al. 1996

Table S3: Primers that were used for 28S rRNA sequencing.

Name of Primer	Sequences (5' to 3')	Region	References
28S-568F	TTGAAACACGGACCAAGGAG	~568 (F)	Marande et al. 2009
28S-803R	ACTTCGGAGGG AACCAGCTA	~803 (R)	Marande et al. 2009

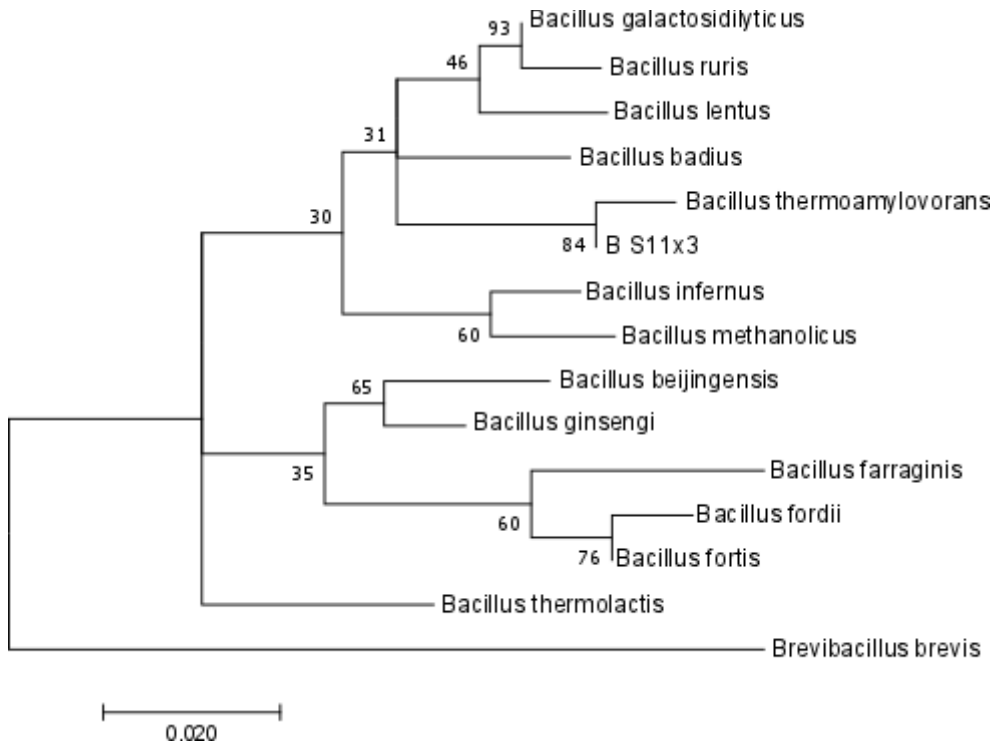


Figure S1: Phylogenetic tree for *Bacillus thermoamylovorans*,

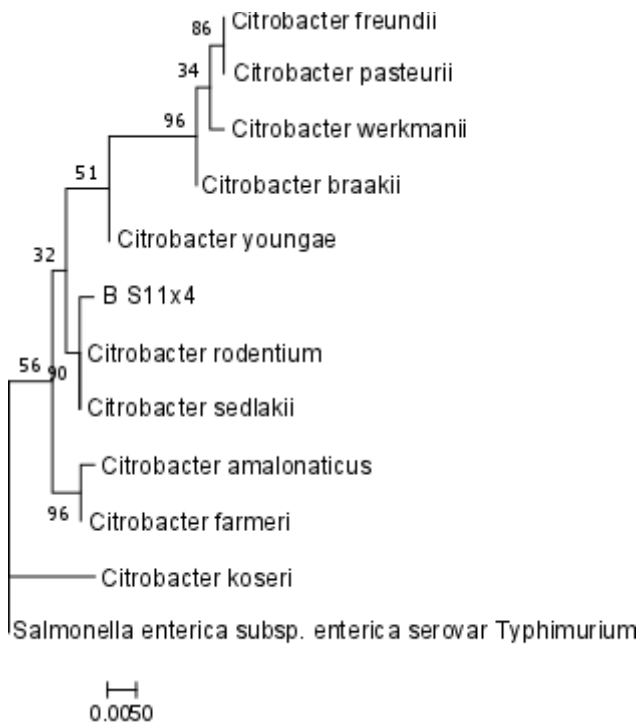


Figure S2: Phylogenetic tree for *Citrobacter sedlaki*

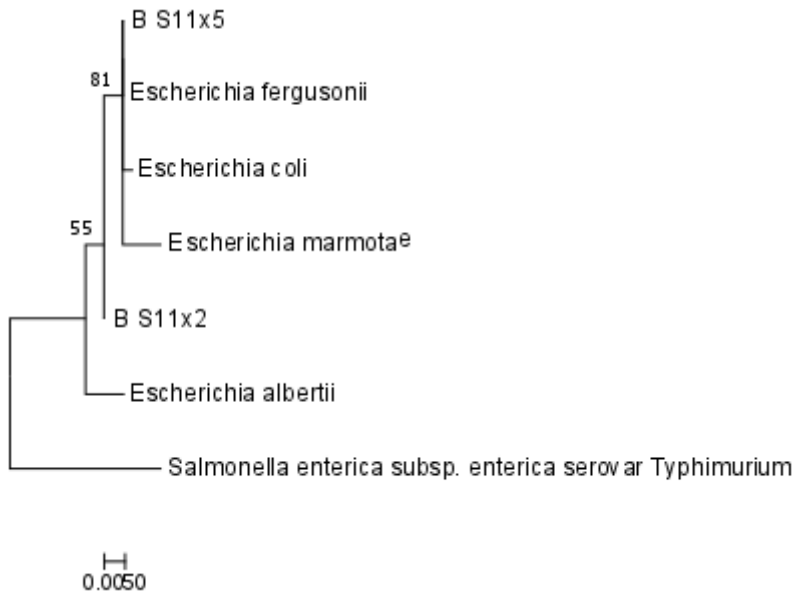


Figure S3: Phylogenetic tree for *Escherichia coli*