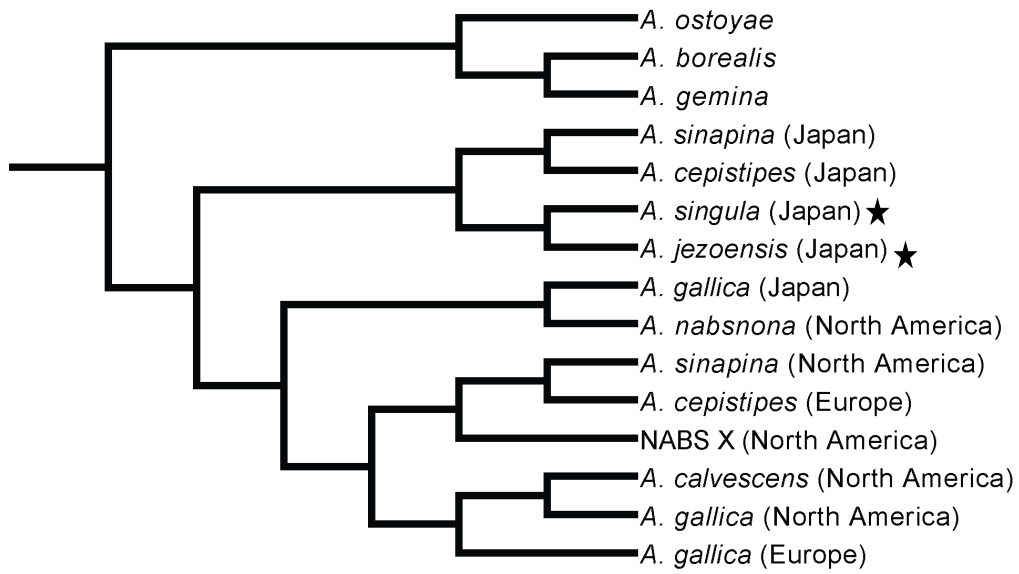
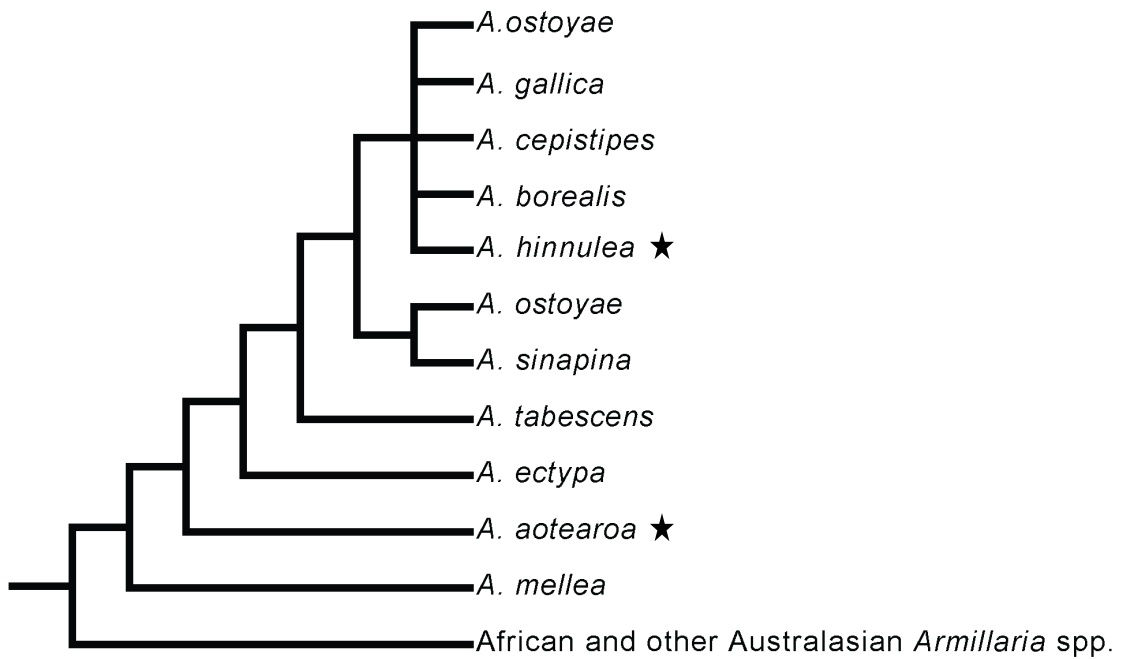


**Figure S1.** Phylogenetic trees generated from publications for species for which *tef-1 $\alpha$*  DNA are not available or that had conflicting phylogenetic positions based on genomic regions other than *tef-1 $\alpha$* . Stars indicate the species of interest. (a), Combined ITS, LSU and *tef-1 $\alpha$*  (Coetzee et al. 2011), (b) Combined 28S, *tef-1 $\alpha$* , *rpb2*, TUB, *gpd* and *actin-1* (Koch et al. 2017 ), (c) Phylogenetic tree based on IGS-1 sequences showing the relationship of *A. jezoensis* and *A. singula* relative to other other *Armillaria* species (Terashima et al 1998), (d) Strict consensus tree of 210 most parsimonious ITS trees showing the relationship of *A. hinnulea* and *A. aotearoa* within the northern hemisphere clade of *Armillaria* species (Coetzee et al. 2001), (e) Tree generate from ITS sequenced showing the relationship of species from Argentina relative to other *Armillaria* species (Pildain et al. 2009).

C



D



E

