

Accepted Manuscript

Ophiostoma quercus: an unusually diverse and globally widespread tree-infecting fungus

Stephen J. Taerum, Z. Wilhelm de Beer, Seonju Marincowitz, Robert Jankowiak, Michael J. Wingfield



PII: S1878-6146(18)30099-0

DOI: [10.1016/j.funbio.2018.05.005](https://doi.org/10.1016/j.funbio.2018.05.005)

Reference: FUNBIO 932

To appear in: *Fungal Biology*

Received Date: 25 January 2018

Revised Date: 11 May 2018

Accepted Date: 18 May 2018

Please cite this article as: Taerum, S.J., de Beer, Z.W., Marincowitz, S., Jankowiak, R., Wingfield, M.J., *Ophiostoma quercus*: an unusually diverse and globally widespread tree-infecting fungus, *Fungal Biology* (2018), doi: 10.1016/j.funbio.2018.05.005.

This is a PDF file of an unedited manuscript that has been accepted for publication. As a service to our customers we are providing this early version of the manuscript. The manuscript will undergo copyediting, typesetting, and review of the resulting proof before it is published in its final form. Please note that during the production process errors may be discovered which could affect the content, and all legal disclaimers that apply to the journal pertain.

***Ophiostoma quercus*: an unusually diverse and globally widespread tree-
infecting fungus**

Stephen J. Taerum^{1,3,4}, Z. Wilhelm de Beer¹, Seonju Marincowitz¹, Robert Jankowiak²
Michael J. Wingfield¹

1 Department of Biochemistry, Genetics and Microbiology, Forestry and Agricultural
Biotechnology Institute (FABI), University of Pretoria, Pretoria 0002, South Africa

2 Institute of Forest Ecosystem Protection, Department of Forest Pathology, Mycology
and Tree Physiology, University of Agriculture in Krakow, Al. 29 Listopada 46, 31-425
Kraków, Poland

3 Corresponding author

4 Present address: School of Life Sciences, Arizona State University, 427 E Tyler Mall,
Tempe, AZ, 85287, USA. staerum@asu.edu, Phone: 480-519-5324, Fax: 480-965-7599

Abstract

Ophiostoma quercus (Ascomycota, Ophiostomatales) is a globally widespread, insect-vectored fungus that colonizes a wide diversity of hardwood and conifer hosts. Although the fungus is considered to be non-pathogenic, it is closely related to the fungi that cause Dutch elm disease. We examined the global diversity of *O. quercus* based on a ribosomal RNA marker and three unlinked gene regions. The fungus exhibited substantial morphological diversity. In addition, *O. quercus* had high genetic diversity in every continent from which it was collected, although the fungus was most diverse in Eurasia. There was no evidence of geographical clustering of haplotypes based on phylogenetic and network analyses. In addition, the phylogenetic trees generated based on the different markers were non-congruent. These results suggest that *O. quercus* has been repeatedly moved around the globe, because of trade in wood products, and that the fungal species most likely outcrosses regularly. The high genetic diversity of the fungus, as well as its ability to utilize a wide variety of arthropod vectors and colonize a tremendous diversity of tree host species makes *O. quercus* truly unique among ophiostomatoid fungi.

Keywords: forestry, population genetics, symbiosis

1. Introduction

Human activities over the past Century have led to a dramatic increase in the world-wide movement of tree-colonizing fungi (Gladioux et al., 2014; Santini et al., 2018; Wingfield et al., 2016). Although most exotic fungi are benign to tree hosts, a small number can lead to tree mortality, and in extreme cases can cause the extirpation of entire tree species (Fisher et al., 2012). Understandably, the most damaging fungal species have been the focus of the majority of research and control efforts. However, less damaging fungi still present a threat to forest health because of their potential to become pathogenic if they encounter naive or susceptible trees (Hulcr and Dunn, 2011; Ploetz et al., 2013). This is particularly concerning with fungal species that have high genetic diversities, and those that readily outcross or hybridize, because these species are more likely to evolve into aggressive tree pathogens (Brasier, 2000).

Ophiostoma quercus (Ascomycota, Ophiostomatales) is an ophiostomatoid fungus (Wingfield et al., 1993) that is vectored by bark beetles, nitidulid beetles, and mites (Chang et al., 2017; De Beer et al., 2003; Grobbelaar et al., 2009; Harrington et al., 2001; Kamgan Nkuekam et al., 2012). The fungus has been collected from every continent except Antarctica, although the native range of the fungus is still a source of controversy. *Ophiostoma quercus* was originally hypothesized to have originated in Europe before being introduced to North America and the Southern Hemisphere (Brasier and Kirk, 1993; Harrington et al., 2001). This hypothesis was partially supported by research on mating type frequencies, which indicated that only one mating type is present in North America, while both are present in Europe (Brasier and Kirk, 1993). However, later studies suggested that the fungus may be native to the Southern

Hemisphere, as the fungus was isolated from a large number of native tree species in Africa, Oceania and South America (De Beer et al., 2003).

In addition to having a worldwide distribution, *O. quercus* is remarkable because it has exceptionally high morphological and genetic diversity (De Beer et al., 2003; Grobbelaar et al., 2009). It has also been isolated from a wide variety of native and non-native species of hardwoods (Grobbelaar et al., 2009) and conifers (Jankowiak et al., 2017; Jankowiak and Bilański, 2013; Paciura et al., 2010). Although there has been some suggestion that the fungus contributed to oak decline in Europe (Harrington et al., 2001), this fungus is largely considered to be saprotrophic and non-pathogenic. This is because it primarily grows in freshly cut woody material visited by bark beetles and other insects, and does not form large lesions when inoculated into live trees (Geldenhuis et al., 2004; Jankowiak, 2013; Luque et al., 2000).

Although *O. quercus* is not considered to be a pathogen, there is notable interest in this fungus because it belongs to the *Ophiostoma ulmi* species complex, and is therefore closely related to the pathogens that cause Dutch elm disease: *O. ulmi*, *O. himal-ulmi*, and the two subspecies of *O. novo-ulmi* (De Beer and Wingfield, 2013). It has been suggested that *O. ulmi* displaced *O. quercus* as an associate of elm trees and elm bark beetles while *O. ulmi* spread across Europe (Brasier, 1990). During this time, *O. ulmi* may have hybridized with *O. quercus*, after which *O. ulmi* acquired both vegetative compatibility genes and mycoviruses from *O. quercus* (Brasier, 2001).

The potentially negative impacts of hybridization between *O. quercus* and the fungi that cause Dutch elm disease have been demonstrated. In this case, a single *O. quercus* isolate to which the cerato-ulmin gene from *O. novo-ulmi* was experimentally

transferred was pathogenic on elm trees (Del Sorbo et al., 2000). The close genetic relatedness between *O. quercus* and the Dutch elm disease fungi, as well as the ability of some fungi in the *O. ulmi* species complex to hybridize with other species in the species complex (Brasier, 2001), underscores the potential threat that *O. quercus* poses to trees worldwide.

We examined the global genetic diversity of *O. quercus*. Attempts to develop usable microsatellite markers for *O. quercus* have been unsuccessful. This is due to the fact that the developed markers cannot be reliably scored because they contain large numbers of indels in the flanking regions (S. J. Taerum, unpublished data). Therefore, we genotyped the isolates using three nuclear markers as well as a fragment of ribosomal RNA (rRNA). We then conducted phylogenetic analyses to confirm that the isolates examined were those of *O. quercus*, and to test for congruence between the different gene trees. Finally, we used the phylogenetic analyses as well as network analyses to test for geographical patterns in *O. quercus*, and to determine if the fungus had an obvious geographic origin.

2. Methods

2.1. Isolates and morphology

Isolates of *O. quercus* were obtained from the culture collection (CMW) of the Forestry and Agricultural Biotechnology Institute (FABI), University of Pretoria, Pretoria 0002, South Africa. These isolates had been obtained from a wide variety of tree hosts and geographical locations (Table 1). Among these, twenty isolates representing twenty countries on six continents were selected for the study of morphological diversity. The

Table 1: Collection and host details, as well as GenBank accession numbers, of all isolates included in this study.

Continent	Country	species	host	CMW #	Accession numbers			
					βt	CAL	EF	ITS
Africa	Malawi	<i>Ophiostoma quercus</i>	<i>Eucalyptus grandis</i>	17139 ^A	MH248389	MH248558	MH248623	MH248724
Africa	Malawi	<i>Ophiostoma quercus</i>	<i>Prunus africana</i>	18228	MH248405	MH248559	MH248629	MH248725
Africa	Malawi	<i>Ophiostoma quercus</i>	<i>Prunus africana</i>	26206	MH248431	MH248518	MH248651	MH248761
Africa	South Africa	<i>Ophiostoma quercus</i>	<i>Quercus robur</i>	862	MH248379	MH248478	MH248576	MH248675
Africa	South Africa	<i>Ophiostoma quercus</i>	<i>Quercus robur</i>	867	MH248380	MH248479	MH248577	MH248676
Africa	South Africa	<i>Ophiostoma quercus</i>	<i>Eucalyptus</i> sp.	2520	MH248382	MH248480	MH248647	MH248718
Africa	South Africa	<i>Ophiostoma quercus</i>	<i>Eucalyptus</i> sp.	2521	MH248383	MH248554	MH248578	MH248719
Africa	South Africa	<i>Ophiostoma quercus</i>	<i>Eucalyptus</i> sp.	3069	MH248384	MH248481	MH248579	MH248720
Africa	South Africa	<i>Ophiostoma quercus</i>	<i>Pinus</i> sp.	3119	MH248385	MH248482	MH248609	MH248721
Africa	South Africa	<i>Ophiostoma quercus</i>	<i>Rapanea melanophloeos</i>	14279 ^A	MH248438	MH248483	MH248621	MH248723
Africa	South Africa	<i>Ophiostoma quercus</i>	<i>Pinus patula</i>	19361	MH248457	MH248492	MH248642	MH248702
Africa	South Africa	<i>Ophiostoma quercus</i>	<i>Pinus elliotii</i>	19365	MH248455	MH248542	MH248603	MH248759
Africa	South Africa	<i>Ophiostoma quercus</i>	<i>Trichocladus crinitus</i>	40337	MH248461	MH248489	MH248636	MH248730
Africa	South Africa	<i>Ophiostoma quercus</i>	<i>Rapanea melanophloeos</i>	40338	MH248462	MH248490	MH248637	MH248731
Africa	South Africa	<i>Ophiostoma quercus</i>	<i>Curtisia dentata</i>	40343	MH248463	MH248491	MH248638	MH248732
Africa	Tanzania	<i>Ophiostoma quercus</i>	<i>Eucalyptus</i> sp.	17691	MH248464	MH248568	MH248632	MH248755
Africa	Tanzania	<i>Ophiostoma quercus</i>	<i>Eucalyptus</i> sp.	17694 ^A	MH248465	MH248540	MH248633	MH248756
Africa	Tanzania	<i>Ophiostoma quercus</i>	<i>Eucalyptus</i> sp.	17795	MH248466	MH248569	MH248634	MH248757
Africa	Uganda	<i>Ophiostoma quercus</i>	<i>Acacia mearnsii</i>	5826	MH248412	MH248499	MH248616	MH248740
Africa	Uganda	<i>Ophiostoma quercus</i>	<i>Acacia mearnsii</i>	5910	MH248413	MH248501	MH248617	MH248741
Africa	Uganda	<i>Ophiostoma quercus</i>	<i>Acacia mearnsii</i>	5917	MH248414	MH248500	MH248593	MH248688
Africa	Uganda	<i>Ophiostoma quercus</i>	<i>Acacia mearnsii</i>	5932	MH248415	MH248502	MH248594	MH248742
Africa	Uganda	<i>Ophiostoma quercus</i>	<i>Acacia mearnsii</i>	5943	MH248416	MH248503	MH248595	MH248689
Africa	Uganda	<i>Ophiostoma quercus</i>	<i>Acacia mearnsii</i>	5952 ^A	MH248417	MH248504	MH248618	MH248743
Africa	Uganda	<i>Ophiostoma quercus</i>	<i>Acacia mearnsii</i>	14307	MH248421	MH248556	MH248622	MH248694
Africa	Zimbabwe	<i>Ophiostoma quercus</i>	<i>Eucalyptus grandis</i>	40060	MH248408	MH248487	MH248605	MH248727
Africa	Zimbabwe	<i>Ophiostoma quercus</i>	<i>Eucalyptus grandis</i>	40061	MH248391	MH248493	MH248582	MH248728
Africa	Zimbabwe	<i>Ophiostoma quercus</i>	<i>Eucalyptus grandis</i>	40063	MH248409	MH248488	MH248604	MH248729
Asia	Azerbaijan	<i>Ophiostoma quercus</i>	<i>Castanea sativa</i>	8283	MH248418	MH248505	MH248624	MH248744
Asia	Azerbaijan	<i>Ophiostoma quercus</i>	<i>Castanea sativa</i>	8284 ^A	MH248419	MH248506	MH248625	MH248745
Asia	Azerbaijan	<i>Ophiostoma quercus</i>	<i>Quercus longipes</i>	9255	MH248397	MH248511	MH248626	MH248707
Asia	Azerbaijan	<i>Ophiostoma quercus</i>	<i>Castanea sativa</i>	9259	MH248451	MH248535	MH248596	MH248746
Asia	Azerbaijan	<i>Ophiostoma quercus</i>	<i>Quercus</i> sp.	9474	MH248448	MH248536	MH248627	MH248747

Asia	Azerbaijan	<i>Ophiostoma quercus</i>	<i>Quercus</i> sp.	13870	MH248453	MH248513	MH248602	MH248750
Asia	Azerbaijan	<i>Ophiostoma quercus</i>	<i>Quercus longipes</i>	13872	MH248437	MH248537	MH248628	MH248751
Asia	Bhutan	<i>Ophiostoma quercus</i>	<i>Quercus griffithii</i>	8221	MH248446	MH248530	MH248661	MH248690
Asia	Bhutan	<i>Ophiostoma quercus</i>	<i>Quercus griffithii</i>	8527 ^A	MH248445	MH248564	MH248665	MH248691
Asia	China	<i>Ophiostoma quercus</i>	<i>Pinus yunnanensis</i>	11756	MH248447	MH248509	MH248662	MH248733
Asia	China	<i>Ophiostoma quercus</i>	<i>Tsuga</i> sp.	12122	MH248440	MH248553	MH248663	MH248706
Asia	China	<i>Ophiostoma quercus</i>	<i>Tsuga dumosa</i>	12287 ^A	MH248430	MH248551	MH248666	MH248722
Asia	China	<i>Ophiostoma quercus</i>	<i>Tsuga</i> sp.	12382	MH248444	MH248528	MH248667	MH248711
Asia	China	<i>Ophiostoma quercus</i>	<i>Pinus kesiya</i>	41715	MH248468	MH248566	MH248654	MH248766
Asia	China	<i>Ophiostoma quercus</i>	<i>Pinus kesiya</i>	41732	MH248469	MH248567	MH248660	MH248767
Asia	China	<i>Ophiostoma quercus</i>	<i>Pinus kesiya</i>	41748 ^A	MH248467	MH248525	MH248664	MH248717
Asia	Japan	<i>Ophiostoma quercus</i>	<i>Betula platyphylla</i>	1564 ^A	MH248441	MH248494	MH248589	MH248677
Europe	Austria	<i>Ophiostoma quercus</i>	<i>Fagus sylvatica</i>	12605	MH248452	MH248552	MH248630	MH248748
Europe	Austria	<i>Ophiostoma quercus</i>	<i>Fagus sylvatica</i>	12609	MH248401	MH248549	MH248631	MH248749
Europe	Austria	<i>Ophiostoma quercus</i>	<i>Fagus sylvatica</i>	16561	MH248439	MH248550	MH248583	MH248753
Europe	Austria	<i>Ophiostoma quercus</i>	<i>Fagus sylvatica</i>	16564	MH248403	MH248538	MH248598	MH248709
Europe	Austria	<i>Ophiostoma quercus</i>	<i>Fagus sylvatica</i>	16570 ^A	MH248404	MH248539	MH248639	MH248697
Europe	Austria	<i>Ophiostoma quercus</i>	<i>Quercus robur</i>	16573	MH248398	MH248557	MH248640	MH248698
Europe	Austria	<i>Ophiostoma quercus</i>	<i>Carpinus betulus</i>	16609	MH248449	MH248516	MH248641	MH248754
Europe	Austria	<i>Ophiostoma quercus</i>	<i>Ulmus glabra</i>	22909	MH248407	MH248517	MH248644	MH248760
Europe	Finland	<i>Ophiostoma quercus</i>	<i>Betula pendula</i>	23111	MH248429	MH248562	MH248659	MH248716
Europe	France	<i>Ophiostoma quercus</i>	<i>Fagus sylvatica</i>	2463	MH248393	MH248510	MH248601	MH248736
Europe	France	<i>Ophiostoma quercus</i>	<i>Quercus robur</i>	2465	MH248424	MH248560	MH248653	MH248734
Europe	France	<i>Ophiostoma quercus</i>	<i>Quercus</i> sp.	2467	MH248450	MH248523	MH248591	MH248737
Europe	France	<i>Ophiostoma quercus</i>	<i>Quercus petraea</i>	13245 ^A	MH248402	MH248521	MH248620	MH248708
Europe	Norway	<i>Ophiostoma quercus</i>	<i>Populus</i> sp.	19178	MH248425	MH248565	MH248655	MH248712
Europe	Norway	<i>Ophiostoma quercus</i>	<i>Quercus</i> sp.	19214	MH248471	MH248526	MH248584	MH248699
Europe	Norway	<i>Ophiostoma quercus</i>	<i>Quercus</i> sp.	19241	MH248443	MH248563	MH248646	MH248758
Europe	Norway	<i>Ophiostoma quercus</i>	<i>Quercus</i> sp.	19242	MH248406	MH248547	MH248643	MH248700
Europe	Norway	<i>Ophiostoma quercus</i>	<i>Quercus</i> sp.	19260	MH248454	MH248541	MH248635	MH248701
Europe	Norway	<i>Ophiostoma quercus</i>	<i>Salix</i> sp.	19264	MH248426	MH248561	MH248656	MH248713
Europe	Norway	<i>Ophiostoma quercus</i>	<i>Betula</i> sp.	19272 ^A	MH248427	MH248519	MH248657	MH248714
Europe	Norway	<i>Ophiostoma quercus</i>	<i>Betula</i> sp.	22055	MH248428	MH248520	MH248658	MH248715
Europe	Poland	<i>Ophiostoma quercus</i>	<i>Pinus sylvestris</i>	40202	MH248410	MH248527	MH248587	MH248710
Europe	Poland	<i>Ophiostoma quercus</i>	<i>Fraxinus excelsior</i>	40208	MH248411	MH248543	MH248599	MH248762
Europe	Poland	<i>Ophiostoma quercus</i>	<i>Fagus sylvatica</i>	43227	MH248432	MH248546	MH248588	MH248763

Europe	Poland	<i>Ophiostoma quercus</i>	<i>Abies alba</i>	43658	MH248456	MH248544	MH248600	MH248764
Europe	UK	<i>Ophiostoma quercus</i>	<i>Quercus</i> sp.	27847 ^A	MH248423	MH248522	MH248586	MH248765
North America	USA	<i>Ophiostoma quercus</i>	<i>Juglans cinerea</i>	3108	MH248433	MH248524	MH248645	MH248679
North America	USA	<i>Ophiostoma quercus</i>	<i>Juglans cinerea</i>	3109 ^A	MH248434	MH248496	MH248606	MH248680
North America	USA	<i>Ophiostoma quercus</i>	<i>Juglans cinerea</i>	3111	MH248435	MH248508	MH248607	MH248681
North America	USA	<i>Ophiostoma quercus</i>	<i>Juglans cinerea</i>	3112	MH248442	MH248497	MH248608	MH248682
Oceania	Australia	<i>Ophiostoma quercus</i>	<i>Eucalyptus globulus</i>	24771	MH248390	MH248486	MH248585	MH248705
Oceania	New Zealand	<i>Ophiostoma quercus</i>	<i>Pinus radiata</i>	24632 ^A	MH248458	MH248484	MH248580	MH248726
Oceania	New Zealand	<i>Ophiostoma quercus</i>	<i>Pinus radiata</i>	24638	MH248459	MH248555	MH248652	MH248703
Oceania	New Zealand	<i>Ophiostoma quercus</i>	<i>Pinus radiata</i>	24643	MH248460	MH248485	MH248581	MH248704
South America	Brazil	<i>Ophiostoma quercus</i>	unknown hardwood	2542 ^A	MH248381	MH248495	MH248590	MH248678
South America	Brazil	<i>Ophiostoma quercus</i>	unknown hardwood	3120	MH248386	MH248498	MH248592	MH248683
South America	Chile	<i>Ophiostoma quercus</i>	<i>Pinus radiata</i>	9481 ^A	MH248387	MH248512	MH248648	MH248692
South America	Chile	<i>Ophiostoma quercus</i>	<i>Eucalyptus nitens</i>	14268 ^A	MH248420	MH248507	MH248597	MH248752
South America	Chile	<i>Ophiostoma quercus</i>	<i>Eucalyptus globulus</i>	15858	MH248388	MH248514	MH248649	MH248695
South America	Chile	<i>Ophiostoma quercus</i>	<i>Eucalyptus regnans</i>	15861	MH248422	MH248515	MH248650	MH248696
South America	Colombia	<i>Ophiostoma quercus</i>	<i>Eucalyptus</i> sp.	3122	MH248436	MH248529	MH248610	MH248684
South America	Colombia	<i>Ophiostoma quercus</i>	<i>Quercus humboldtii</i>	11278 ^A	MH248392	MH248548	MH248619	MH248693
South America	Uruguay	<i>Ophiostoma quercus</i>	<i>Eucalyptus grandis</i>	5625	MH248399	MH248531	MH248611	MH248738
South America	Uruguay	<i>Ophiostoma quercus</i>	<i>Eucalyptus grandis</i>	5627	MH248394	MH248532	MH248612	MH248685
South America	Uruguay	<i>Ophiostoma quercus</i>	<i>Eucalyptus grandis</i>	5629	MH248400	MH248545	MH248613	MH248686
South America	Uruguay	<i>Ophiostoma quercus</i>	<i>Eucalyptus grandis</i>	5631 ^A	MH248395	MH248533	MH248614	MH248739
South America	Uruguay	<i>Ophiostoma quercus</i>	<i>Eucalyptus grandis</i>	5633	MH248396	MH248534	MH248615	MH248687
		<i>Ophiostoma australiae</i>		2579	MH248472	MH248572	MH248670	MH248769
		<i>Ophiostoma himal-ulmi</i>		22729	MH248475	-	MH248674	MH248770
		<i>Ophiostoma karelicum</i>		23099	MH248476	MH248575	MH248671	MH248773
		<i>Ophiostoma novo-ulmi</i>		10573	MH248473	MH248573	MH248672	MH248771
		<i>Ophiostoma tasmaniense</i>		1033	MH248470	MH248570	MH248668	MH248735
		<i>Ophiostoma tsotsi</i>		18134	MH248477	MH248571	MH248669	MH248768
		<i>Ophiostoma ulmi</i>		43874	MH248474	MH248574	MH248673	MH248772

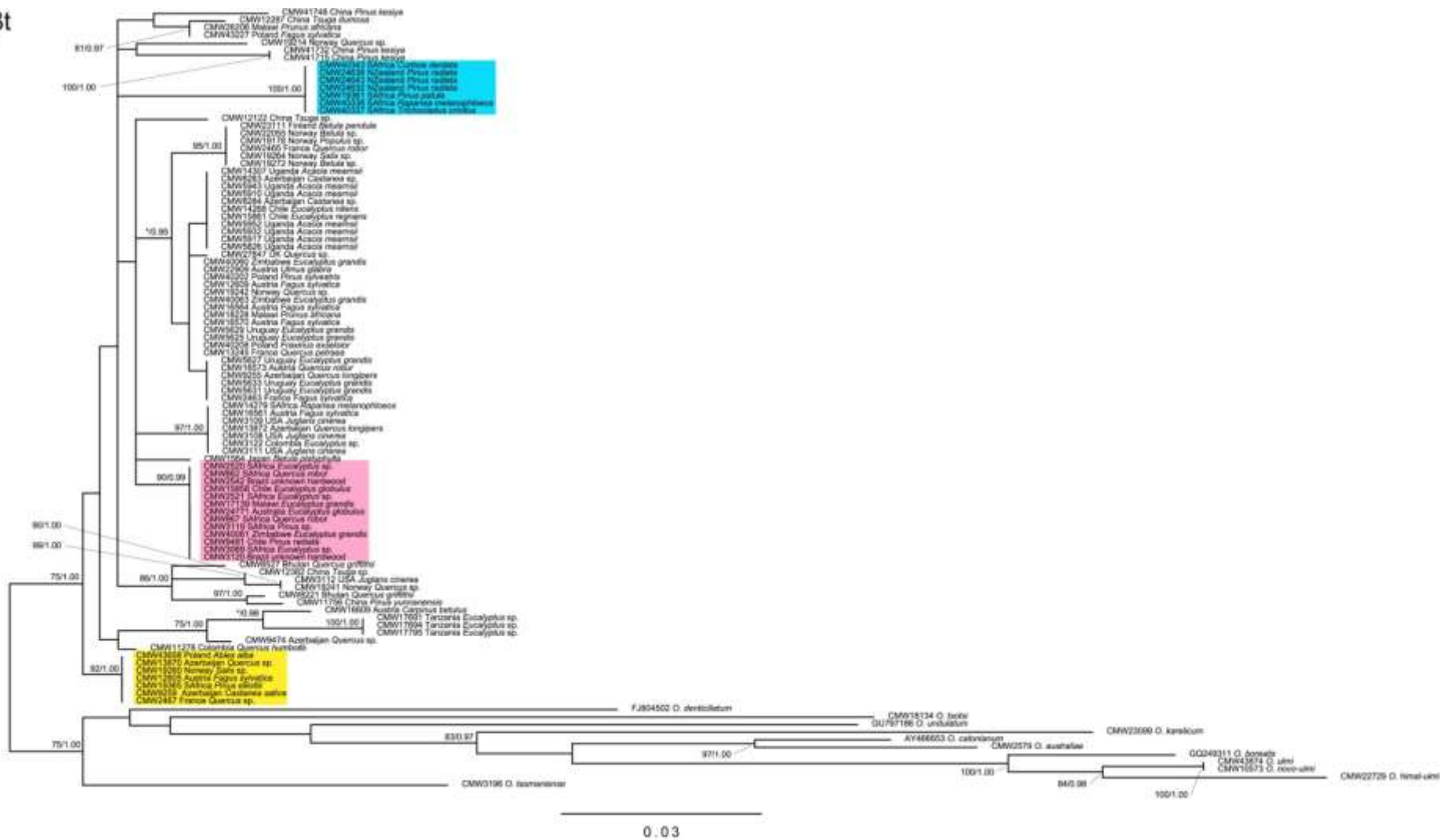
^A cultures used for photoplates in Fig. 2.

diversity in the fungal species was examined for both culture and microscopic characteristics. For culture characteristics, isolates were grown in the dark at 25°C for 14 days on malt extract agar (MEA: 2% Biolab malt extract, 2% Difco agar) and oat meal agar (OA: filtered liquid of 30 g cooked oatmeal in 800 ml water, 20 g Difco agar, extra water to make it up to 1 L). For microscopic characteristics, isolates were grown on 2% MEA under near UV light for 20–24 days at room temperature. Fruiting structures were mounted in microscope slides in water, which was later replaced with 85% lactic acid in which further observation was made and images captured. Microscopic features were observed using a Nikon Eclipse Ni compound microscope and a Nikon SMZ18 stereo microscope. Images were captured with a Nikon DS-Ri2 camera mounted on the microscopes.

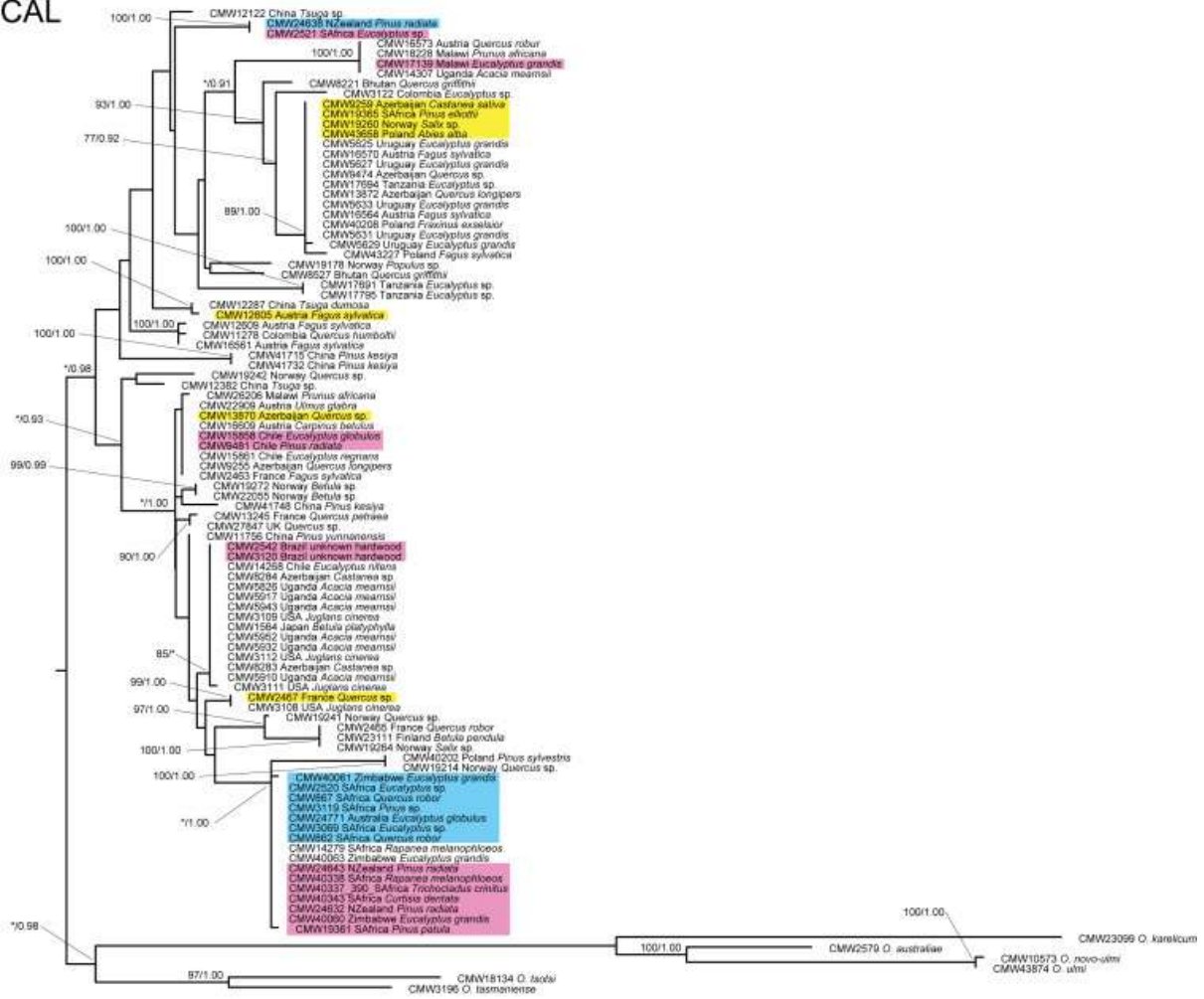
2.2. Marker amplification and sequencing

DNA was extracted from fungal isolates as described by Duong et al. (2012). For each *O. quercus* isolate, we amplified a rRNA marker (part of the internal transcribed spacer [ITS1-ITS2]) and three unlinked gene regions (beta-tubulin [β t], elongation factor 1- α [EF], and calmodulin [CAL]). The primers ITS1-F (Gardes and Bruns 1993) and ITS4 (White et al., 1990) were used to amplify ITS1-ITS2, B2a and B2b (Glass and Donaldson, 1995) were used to amplify β t, EF2F (Marincowitz et al., 2015) and EF2R (Jacobs et al., 2004) were used to amplify EF, and CL2F and CL2R (Duong et al., 2012) were used to amplify CAL. PCR and sequencing protocols followed the methods of Duong et al. (2012). For the outgroups in the phylogenetic analyses, we also amplified a representative isolate of *Ophiostoma australiae*, *O. himal-ulmi*, *O. karelicum*, *O. novo-*

βt



CAL



0.05

ulmi, *O. tasmaniense*, *O. tsotsi*, and *O. ulmi*. The β t, EF and ITS1-ITS2 sequences for *O. borealis*, *O. catonianum*, *O. denticiliatum*, and *O. undulatum* were downloaded from GenBank (accession numbers shown in Fig. 1 and Fig. S1).

2.3. Phylogenetic analyses

The dataset for each marker was aligned using MAFFT v. 7 (Kato and Standley, 2013). We used jModelTest v. 2.1.7 (Darriba et al., 2012) to determine the best evolutionary models for each gene region for Maximum likelihood (ML) and Bayesian analyses. ML analyses were conducted using raxML v. 8.0.0 (Stamatakis, 2014), with 1000 bootstrap replicates for statistical support. In addition, Bayesian analyses were conducted using MrBayes v. 3.2.6 (Ronquist and Huelsenbeck, 2003), following the protocol described by Taerum et al. (2013).

2.4. Network analyses and genetic diversity

Network analyses were conducted using only the sequences of *O. quercus*. Median joining networks using PopART v. 1.7 (Leigh and Bryant, 2015) were generated on the individual nuclear gene regions (β t, EF, CAL), as well as a concatenated dataset of the three gene regions. To test for geographical patterns within continents, network analyses were also conducted using concatenated datasets that contained only sequences from continents for which data were available for more than ten isolates (Africa, Asia, Europe, and South America). The networks were then visually examined in an attempt to determine the most likely origin of the fungus and to consider its movement history.

Finally, we determined the genetic diversity of *O. quercus* both globally and within each continent, based on the concatenated dataset. Arlequin v. 3.5 (Excoffier et al., 2005) was used to calculate diversity indices (number of haplotypes, expected heterozygosity, mean allelic diversity). The ratios of isolate number examined to observed haplotypes, or multi-locus genotypes (MLG), to determine the level of clonality for each continent.

3.Results

3.1. Isolates

In total, we obtained 92 *O. quercus* isolates for this study. Of these, 28 were from Africa (three from Malawi, 12 from South Africa, three from Tanzania, seven from Uganda, and three from Zimbabwe), 17 from Asia (seven from Azerbaijan, two from Bhutan, seven from China, and one from Japan), 26 from Europe (eight from Austria, one from Finland, four from France, eight from Norway, four from Poland, and one from the UK), four from North America (all from the USA), four from Oceania (one from Australia, and three from New Zealand), and 13 from South America (two from Brazil, four from Chile, two from Colombia, and five from Uruguay). The host species and collection details are summarized in Table 1.

3.2. Morphology

The twenty isolates selected for the examination of fungal morphology showed a broad diversity in both culture and microscopic characteristics. Cultures reached the edge of 60 mm petri dish in 10–14 d, showing circular growth with smooth margins.

Mycelia varied from being submerged to abundantly aerial in velvety to cottony textures (Fig. 2 A–H). Some cultures showed sectoring (different form of growth in sectors), concentrically zonating or with scattered pigmented patches. Colour of cultures was diverse from showing no visible colour or white to different shades of brown. Cultures produced both sexual and asexual states. The sexual state was observed in a single isolate from Uruguay (CMW 5631; Fig. 3 A, B). Asexual states had two distinct morphs, which could be distinguished by conidiophores: sporothrix-like (mononematous; Fig. 3 K) and pesotum-like (synnematous; Fig. 3 C–H). Most of the isolates produced both of these asexual morphs, but a few isolates produced sporothrix-like conidiophores only.

In the pesotum-like asexual state, synnematous conidiophores were composed of a few to several individual stipes that were tightly packed. These were produced individually or in tufts, were gregarious, and were lightly or darkly pigmented throughout their length and paler towards the apex. The number of conidiophores produced in cultures varied from none to several (Fig. 2 I–P). Conidiogenous apparatuses were unbranched or mildly branched (Fig. 3 C, D, I), or branched extensively in many tiers (Fig. 3 E–H, J), which gave different appearances of conidiophores from tuft-like to brush-like. Conidia were ellipsoidal to oblong with a pointed base and their shapes were uniform in individual isolates (Fig. 3 L, M). In the sporothrix-like asexual state, conidiogenous cells were blastic and prominently denticulate. Conidia were ellipsoidal to cylindrical, often with both ends pointed, and their shape and dimensions varied in individual isolates (Fig. 3 O).

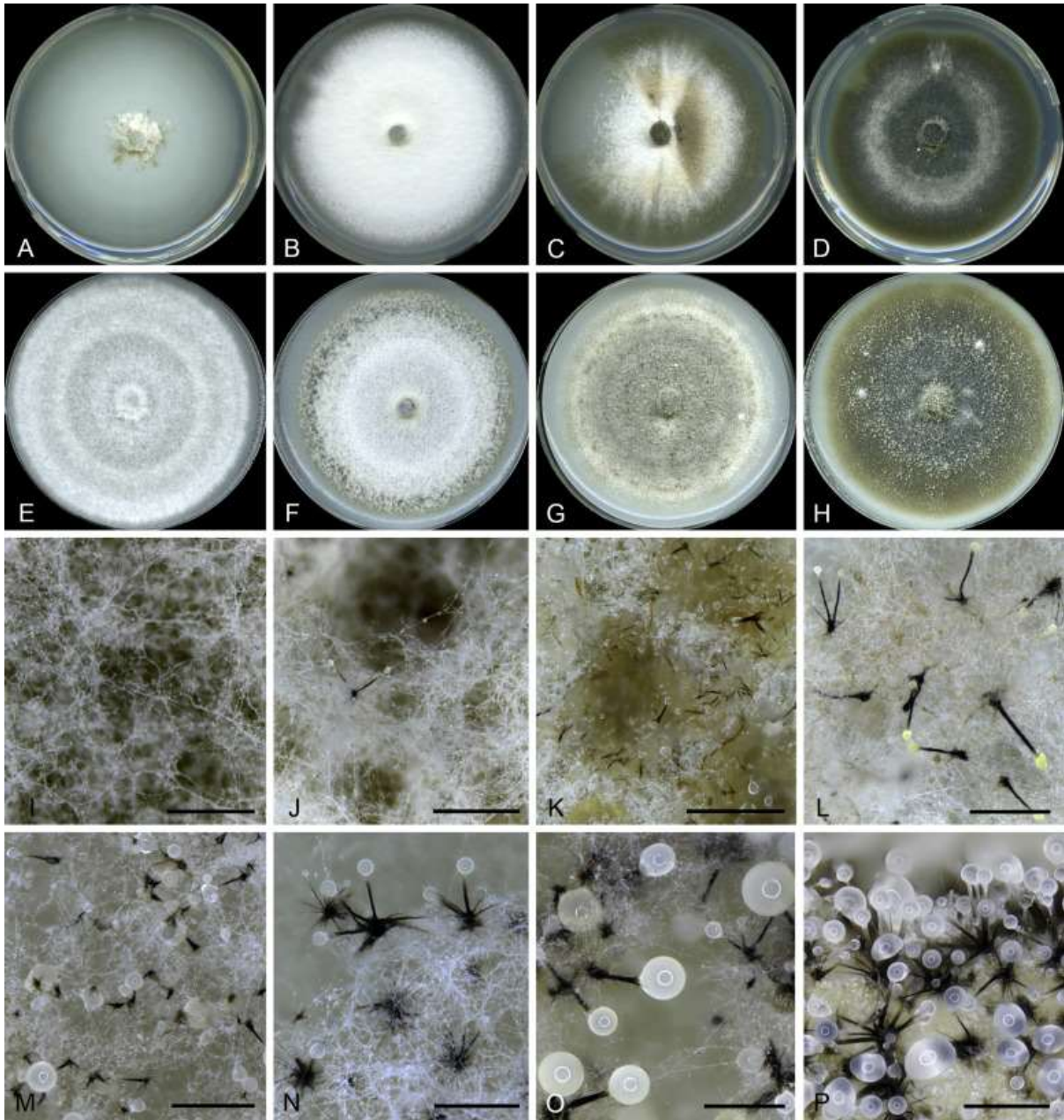


Fig. 2. Culture characteristics of *Ophiostoma quercus*. (A–H). Cultures grown in the dark for 14 d at 25 °C. (A–D), on 2 % MEA. (E–H), on oat agar. (I–P). Close-up of the cultures on 2 % malt extract agar grown under near UV light for 20–24 d at room temperature. Culture codes and countries of origin for each culture photographed are listed in Table S1. Scale bars: J–P = 500 μ m.

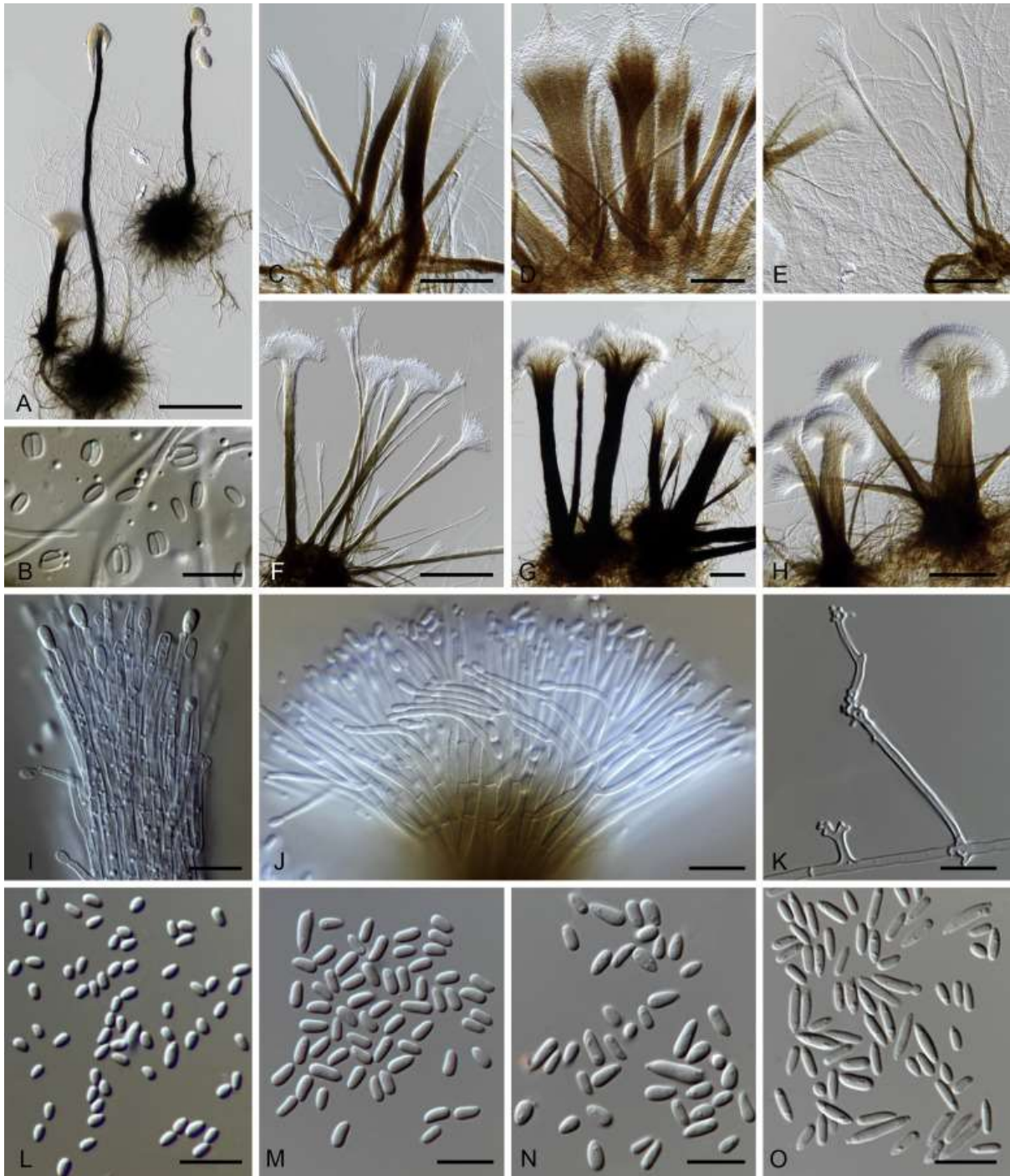


Fig. 3. Micrographs of *Ophiostoma quercus*. (A). Ascomata with a long ostiolar neck with slimy droplets of ascospores at the tip of the neck. (B). Ascospores. (C–H). Synnemata of pesotum-like asexual state. (I, J). Conidiogenous apparatus and conidiogenous cells of pesotum-like asexual state. (K). Conidiophores and conidiogenous cells of sporothrix-like asexual state. (L). (M). Conidia of pesotum-like asexual state. (N). A mixture of conidia of two asexual states. (O). Conidia of sporothrix-like asexual state. Culture codes and countries of origin for each culture photographed are listed in Table S1. Scale bars: A = 250 μm; C–H = 100 μm; B, I–O = 10 μm.

3.3. Phylogenetic analyses

The ITS1-ITS2 alignment had 622 bases (71 were variable), while the alignments of the β t, CAL, and EF gene regions had 452 bases (144 variable), 545 bases (197 variable), and 927 bases (392 variable) respectively. The general time reversible (GTR) + gamma model was the best supported model for all datasets.

The *O. quercus* isolates did not form a monophyletic clade in the ITS1-ITS2 tree (Fig. S1), as several other species (*O. australiae*, *O. borealis*, *O. catonianum*, *O. himal-ulmi*, *O. tasmaniense*, *O. tsotsi*, and *O. undulatum*) were present within the clade that contained all of the *O. quercus* strains. However, most nodes in the ITS1-ITS2 tree did not have strong statistical support (> 75% ML, > 0.9 Bayesian), suggesting that the marker had insufficient resolution to determine phylogenetic patterns. This observation is consistent with previous studies of *O. quercus* (Grobbelaar et al., 2009). For this reason, ITS1-ITS2 was not considered in the remaining analyses.

In the β t, EF and CAL trees (Fig. 1), the *O. quercus* isolates formed a monophyletic clade, while the other species from the *O. ulmi* species complex formed a clear outgroup. The phylogenies based on these gene regions were incongruent based on the topologies of the three trees. In addition, the isolates did not form monophyletic clades based on isolate origin or host taxonomy in any of the trees.

3.4. Network analyses

The concatenated alignment had 1753 bases (303 were variable). In the global networks, there were no clear geographical patterns in the arrangement of the isolates (Fig. 4, Fig. S2). A lack of clear geographical structure was also observed in the

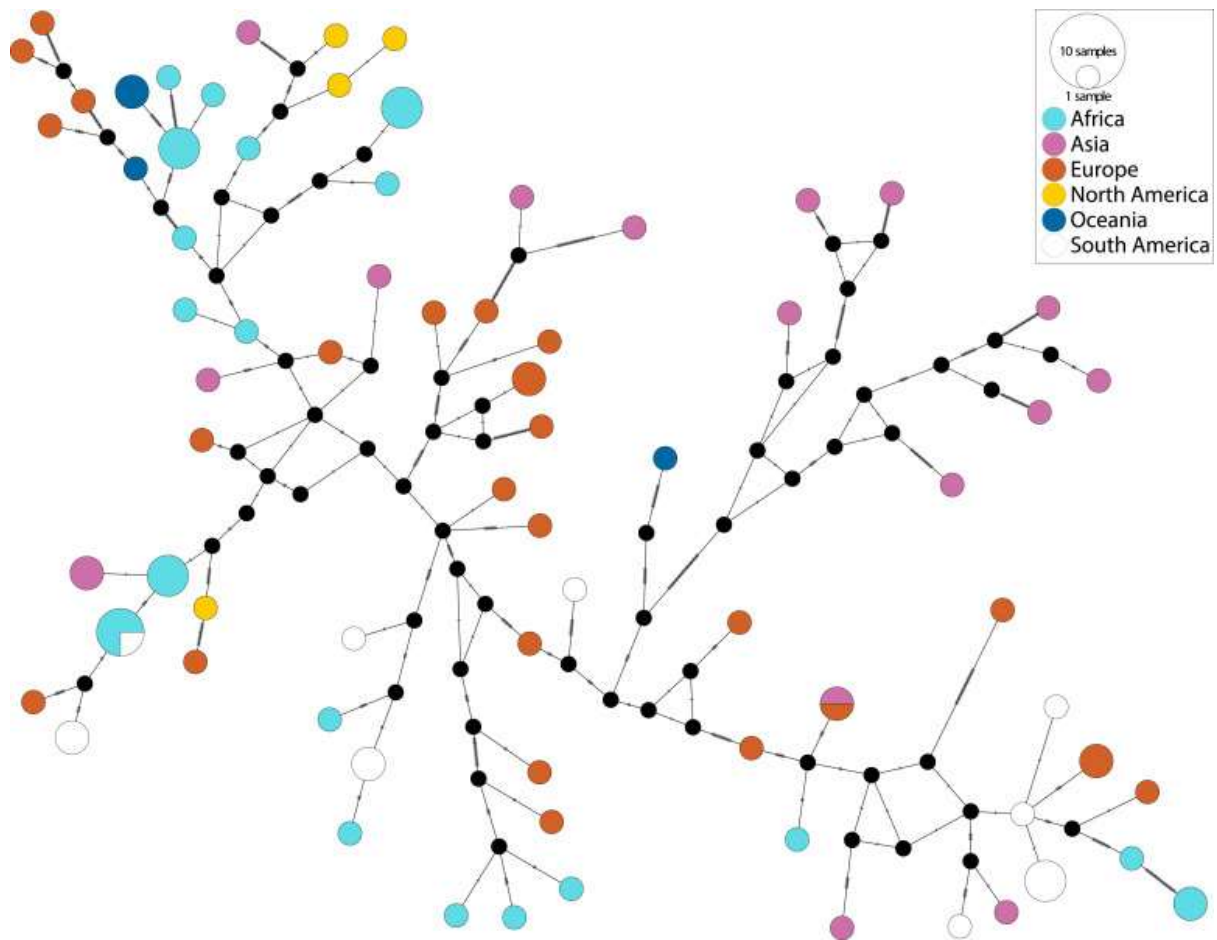


Fig. 4. Median-joining network of *O. quercus* isolates collected globally, based on the concatenated (β t, EF, and CAL) dataset. Circle sizes are proportional to the number of isolates that share a haplotype. Colours represent continent of origin (see legend). (For interpretation of the references to color/colour in this figure legend, the reader is referred to the Web version of this article.)

Table 2: Genetic diversities of *O. quercus* isolates within each continent.

Continent	N	MLG	N:MLG	He (s.d.)	# polymorphic loci ^A	\bar{A} (s.d.)
Africa	28	19	1.474	0.03077 (0.09812)	195	1.124 (0.368)
Asia	17	16	1.063	0.04485 (0.12404)	277	1.180 (0.443)
Europe	26	24	1.083	0.03300 (0.10728)	211	1.140 (0.406)
North America	4	4	1.000	0.00884 (0.06592)	31	1.018 (0.132)
Oceania	4	3	1.333	0.03832 (0.13645)	130	1.076 (0.271)
South America	13	9	1.444	0.02129 (0.09411)	99	1.059 (0.245)
Worldwide	92	73	1.260	0.03554 (0.09917)	385	1.273 (0.569)

N - number of isolates, MLG - number of multilocus genotypes, He - expected

heterozygosity, \bar{A} - mean allelic diversity (across all loci), s.d. - standard deviation. ^A

measured out of 1753 total nucleotides.

continent-specific networks, except for South America, where isolates clustered according to the countries from which they were sampled (Fig. S3). There were only two haplotypes from the combined dataset that were present from multiple continents. In this case, one haplotype was present in both Africa and South America, and another was present in both Asia and Europe (Fig. 4).

3.5. Genetic diversity

In total, 73 haplotypes were observed within the concatenated dataset (Fig 4; Table 2). The greatest number of haplotypes observed was in isolates from Europe, followed by Africa, Asia, South America, North America, and Oceania. Genetic diversity was highest in Asia and lowest in North America based on expected heterozygosity, numbers of polymorphic loci, and mean allelic diversity. Isolates from each continent had a low level of clonality, with Africa having the highest, and North America having the lowest level.

4. Discussion

No clear geographical pattern was evident based on the global genetic diversity of *O. quercus*. There was also no evidence of geographical structure for any continent except South America. Although the fungus is found globally, most likely due to human activities, we were unable to unequivocally discern continents where the fungus might have originated. Overall, these patterns, combined with the high genetic diversities observed for each continent, suggest that introductions of *O. quercus* occur globally, regularly, and potentially with large numbers of propagules. It is even possible that new

genotypes of *O. quercus* are emerging in the exotic ranges of the fungus, and are being introduced back to the source continent(s). This may have contributed to the ambiguity in the data regarding the movement of the fungus.

Ophiostoma quercus was most diverse in Asia and Europe based on most of the diversity metrics. This appears to support the hypothesis that the fungus originated in Europe (Brasier and Kirk, 1993; Harrington et al., 2001), or more broadly Eurasia, as species are frequently most diverse in their native ranges (Lee, 2002; Sakai et al., 2001). It should, however, be noted that genetic diversities of exotic populations can be high relative to native populations. Such situations emerge where the exotic populations were established from multiple introduction events from multiple locations within the native range of a species (Roman and Darling, 2007). In addition, the genetic diversities of *O. quercus* in Africa, North America, Oceania, and South America were high, even if they were lower than those observed for Europe and Asia. Observed diversities may have also been impacted by sample size effects, as considerably fewer isolates were available for some continents. Host diversity could also have influenced the observed fungal diversities, because cultures were isolated from at least seven host species in Asia and 12 in Europe, compared with one in North America and two in Oceania.

Some support for the hypothesis that *O. quercus* originated in Eurasia arises from the fact that Asia may be the origin of the fungi that cause Dutch elm disease (Brasier, 1990). In addition, several of the other species in the *O. ulmi* species complex are commonly found in Asia (*O. tsotsi*, Chang et al., 2017), Europe (e.g., *O. borealis*, Kamgan Nkuekam et al., 2010; *O. cationianum*, Harrington et al., 2001; *O. karelicum*, Linnakoski et al., 2008), or both Europe and Asia (*O. denticiliatum*, Huang and Chen,

2013; Linnakoski et al., 2009). This is consistent with what has been observed with other species complexes in the *Ophiostomatales*, as species within a given species complex tend to originate from the same continent. For example, Asia appears to be the centre of diversity for the *Leptographium procerum* species complex (Linnakoski et al., 2012; Yin et al., 2015). It should be noted that some species have been found only in Oceania. Examples include *O. australiae* (Kamgan Nkuekam et al., 2008), as well as *O. tasmaniense* and *O. undulatum* (Kamgan Nkuekam et al., 2011), although this continent is geographically close to Eurasia.

Interestingly, there was very low clonality observed for isolates on any continent. Exotic fungi frequently undergo rapid expansion via clonal propagation after they are introduced to a new location (Gladieux et al., 2014). However, even for the continents where *O. quercus* was most clonal (Africa and South America), the ratio of isolates to MLG was low (< 2.000, where each MLG would have two representatives on average). The low levels of clonality, the high levels of genetic diversity, and the observed incongruence between the genetic markers suggests that the fungus evolves rapidly due to frequent out-crossing. This could explain why *O. quercus* is able to colonize an unusually wide diversity of host tree species, including angiosperms and gymnosperms.

Another unexpected observation was the production of perithecia by one of the cultures (CMW 5631). *Ophiostoma quercus* is a heterothallic fungus (Wilken et al., 2012), and typically requires interactions between cultures with different mating types (MAT1-1 and MAT1-2) for perithecia production. The production of sexual spores by the culture suggests that some isolates of *O. quercus* are homothallic, or may be able to undergo unisexual reproduction (Wilson et al., 2015). Further studies are needed to test

these hypotheses, and to determine how frequently *O. quercus* isolates produce sexual spores without interacting with an isolate having the opposite mating type.

The exceptionally high genetic and morphological diversity in *O. quercus* observed in this study is unusual for the tree-associated and insect-dispersed fungi in the *Ophiostomatales*. Most species in this Order have little or no population-level variation in the ITS, β t, EF and CAL markers. In some cases individual single nucleotide polymorphisms (SNPs) are sufficient to differentiate between species (e.g., the *Grosmannia serpens*, *L. procerum*, and *Sporothrix schenckii* species complexes; de Meyer et al., 2008; Duong et al., 2012; Yin et al., 2015). In addition, culture and microscopic characteristics are typically consistent within ophiostomatoid species (De Beer and Wingfield, 2013). However, *O. tsotsi*, which is also in the *O. ulmi* species complex, is similar to *O. quercus* in that it is highly diverse based on the few isolates that have been studied (Grobbelaar et al., 2010), and capable of colonizing both conifers and hardwoods (Chang et al., 2017; Grobbelaar et al., 2010). *Ophiostoma piceae*, which is closely related to *O. quercus* but not in the *O. ulmi* species complex, is another fungus that has exceptionally high genetic diversity (De Beer et al., 2003; Gagné et al., 2001; Harrington et al., 2001), although it has been isolated only from conifers. Interestingly, all three fungal species have substantial morphological variation, are widely (in the case of *O. quercus* and *O. piceae* globally) distributed, and can infect a wide diversity of host tree species (De Beer et al., 2003; Grobbelaar et al., 2010; Przybyl and De Hoog, 1989), suggesting that similar factors may have influenced their distribution and evolution. Alternatively, *O. quercus* could have originated as a number

of genetically-distinct but closely-related species that hybridized after being brought into contact with each other due to human activities.

Although the global distribution of *O. quercus* may be fairly unique for the *Ophiostomatales*, other plant-associated fungi have similar global distributions with no known source populations. For example, some plant pathogens in the *Botryosphaeriales*, such as *Botryosphaeria dothidea* (Marsberg et al., 2017), *Lasiodiplodia theobromae* (Mehl et al., 2017; Santos et al., 2017), and *Neofusicoccum parvum* (Sakalidis et al., 2013), are globally widespread, but it is unknown where the fungi are native or aliens. Both *O. quercus* and the globally distributed fungi in the *Botryosphaeriales* have limitations as to how far their propagules can spread. *Botryosphaeria dothidea*, *L. theobromae*, and *N. parvum* are spread between hosts via wind and rain. In contrast, *O. quercus* typically requires arthropod vectors for distribution. Although the mechanisms of dispersal might differ, these fungi all have global ranges, highlighting the impact of human activities on their current geographic distributions.

This study represents the most thorough examination of the global diversity of *O. quercus*. Although we were unable to conclusively determine where the fungus might have originated, it was possible to confirm that it is hyper-diverse wherever it is found. More thorough sampling of *O. quercus* from different continents, the application of additional markers (e.g., SNPs), and the use of recently developed scenario testing software would improve our understanding of the global diversity of *O. quercus*. Such data would also make it possible to more clearly understand the pathways and history of movement of the fungus.

Acknowledgements

We thank Dr. Tuan Duong and Mrs. Miranda Erasmus for providing assistance in working with isolates and DNA amplifications. Funding was provided by the Department of Science and Technology (DST)/National Research Foundation (NRF) Centre of Excellence in Tree Health Biotechnology. This project was supported by multiple grants from the NRF, South Africa, including the grant specific unique reference number (UID) 83924. The grant holders acknowledge that opinions, findings, and conclusions or recommendations expressed in publications generated by NRF supported research are that of the authors, and the NRF accepts no liability whatsoever in this regard. This work was also supported by the National Science Centre, Poland (contract No. UMO-2014/15/NZ9/00560).

References

Brasier CM, 1990. China and the origins of Dutch elm disease - An appraisal. *Plant Pathology* **39**: 5-16.

Brasier CM, 2000. The rise of the hybrid fungi. *Nature* **405**: 134-135.

Brasier CM, 2001. Rapid evolution of introduced plant pathogens via interspecific hybridization. *Bioscience* **51**: 123-133.

Brasier CM, Kirk SA, 1993. Sibling species within *Ophiostoma piceae*. *Mycological Research* **97**: 811-816.

Brasier CM, Kirk SA, 2010. Rapid emergence of hybrids between the two subspecies of *Ophiostoma novo-ulmi* with a high level of pathogenic fitness. *Plant Pathology* **59**: 186–199.

Chang R, Duong TA, Taerum SJ, Wingfield MJ, Zhou X, De Beer ZW, 2017. Ophiostomatoid fungi associated with conifer-infesting beetles and their phoretic mites in Yunnan, China. *MycKeys* **28**: 19-64.

Darriba D, Taboada GL, Doallo R, Posada D, 2012. jModelTest 2: more models, new heuristics and high-performance computing. *Nature Methods* **9**: 772.

De Beer ZW, Wingfield BD, Wingfield MJ, 2003. The *Ophiostoma piceae* complex in the Southern Hemisphere: a phylogenetic study. *Mycological Research* **107**: 469-476.

De Beer ZW, Wingfield MJ, 2013. Emerging lineages in the *Ophiostomatales*. In *The Ophiostomatoid Fungi: Expanding Frontiers*. Seifert KA, De Beer ZW, Wingfield MJ (eds). Utrecht, The Netherlands: CBS. pp. 21-46.

de Meyer EM, Summerbell RC, Moharram AM, de Hoog GS, Vismer HF, Wingfield MJ, 2008. Taxonomy and phylogeny of new wood-and soil-inhabiting *Sporothrix* species in the *Ophiostoma stenoceras-Sporothrix schenckii* complex. *Mycologia* **100**: 647-661.

Del Sorbo G, Scala F, Parrella G, Lorito M, Comparini C, Ruocco M, Scala A, 2000. Functional expression of the gene *cu*, encoding the phytotoxic cerato-ulmin, enables *Ophiostoma quercus*, a nonpathogen on elm, to cause symptoms of Dutch elm disease. *Molecular Plant-Microbe Interactions* **13**: 43-53.

Duong TA, De Beer ZW, Wingfield BD, Wingfield MJ, 2012. Phylogeny and taxonomy of species in the *Grosmannia serpens* complex. *Mycologia* **104**: 715-732.

Excoffier L, Laval G, Schneider S, 2005. Arlequin (version 3.0): an integrated software package for population genetics data analysis. *Evolutionary Bioinformatics Online* **1**: 47-50.

Fisher MC, Henk DA, Briggs CJ, Brownstein JS, Madoff LC, McCraw SL, Gurr, SJ, 2012. Emerging fungal threats to animal, plant and ecosystem health. *Nature* **484**: 186-194.

Gagné P, Yang DQ, Hamelin RC, Bernier L, 2001. Genetic variability of Canadian populations of the sapstain fungus *Ophiostoma piceae*. *Phytopathology* **91**: 369-376.

Gardes M, Bruns TD, 1993. ITS primers with enhanced specificity for basidiomycetes: Application to the identification of mycorrhizae and rusts. *Molecular Ecology* **2**: 113–118.

Geldenhuis MM, Roux J, Montenegro F, De Beer ZW, Wingfield MJ, Wingfield BD, 2004. Identification and pathogenicity of *Graphium* and *Pesotum* species from machete wounds on *Schizolobium parahybum* in Ecuador. *Fungal Diversity* **15**: 137–151.

Gladieux P, Feurtey A, Hood ME, Snirc A, Clavel J, Dutech C, Roy M, Giraud T, 2014. The population biology of fungal invasions. *Molecular Ecology* **24**: 1969–1986.

Glass NL, Donaldson GC, 1995. Development of primer sets designed for use with the PCR to amplify conserved genes from filamentous ascomycetes. *Applied Environmental Microbiology* **61**: 1323–1330.

Grobbelaar JW, Aghayeva DN, De Beer ZW, Bloomer P, Wingfield MJ, Wingfield BD, 2009. Delimitation of *Ophiostoma quercus* and its synonyms using multiple gene phylogenies. *Mycological Progress* **8**: 221–236.

Grobbelaar JW, De Beer ZW, Bloomer P, Wingfield MJ, Wingfield, BD, 2010. *Ophiostoma tsotsi* sp. nov., a wound-infesting fungus of hardwood trees in Africa. *Mycopathologia* **5**: 413–423.

Harrington TC, McNew D, Steimel J, Hofstra D, Farrell R, 2001. Phylogeny and taxonomy of the *Ophiostoma piceae* complex and the Dutch elm disease fungi. *Mycologia* **93**: 111-136.

Huang Y-T, Chen C-Y, 2013. *Ophiostoma denticiliatum*, a new record in Taiwan. *Fungal Science* **28**: 31-38.

Hulcr J, Dunn RR, 2011. The sudden emergence of pathogenicity in insect-fungus symbioses threatens naive forest ecosystems. *Proceedings of the Royal Society of London B Biological Sciences* **278**: 2866-2873.

Jacobs K, Bergdahl DR, Wingfield MJ, Halik S, Seifert KA, Bright DE, Wingfield BD, 2004. *Leptographium wingfieldii* introduced into North America and found associated with exotic *Tomicus piniperda* and native bark beetles. *Mycological Research* **108**: 411-418.

Jankowiak R, 2013. Assessing the virulence of ophiostomatoid fungi associated with the pine-infesting weevils to scots pine *Pinus sylvestris* L. seedlings. *Acta Agrobotanica* **66**: 85-94.

Jankowiak R, Strzałka B, Bilański P, Kacprzyk M, Lukášová K, Linnakoski R, Matwiejczuk S, Misztela M, Rossa R, 2017. Diversity of *Ophiostomatales* species

associated with conifer-infesting beetles in the Western Carpathians. *European Journal of Forest Research* **136**: 939-956

Jankowiak R, Bilański P, 2013. Diversity of ophiostomatoid fungi associated with the large pine weevil, *Hylobius abietis*, and infested Scots pine seedlings in Poland. *Annals of Forest Science* **70**: 391-402.

Kamgan Nkuekam G, De Beer ZW, Wingfield MJ, Mohammed C, Carnegie AJ, Pegg GS, Roux J, 2011. *Ophiostoma* species (*Ophiostomatales*, *Ascomycota*), including two new taxa on eucalypts in Australia. *Australian Journal of Botany* **59**: 283-297.

Kamgan Nkuekam G, De Beer ZW, Wingfield MJ, Roux J, 2012. A diverse assemblage of *Ophiostoma* species, including two new taxa on eucalypt tree in South Africa. *Mycological Progress* **11**: 515-533.

Kamgan Nkuekam G, Jacobs K, De Beer ZW, Wingfield MJ, Roux J, 2008. *Pesotum australi* sp. nov. and *Ophiostoma quercus* associated with *Acacia mearnsii* trees in Australia and Uganda, respectively. *Australasian Plant Pathology* **37**: 406-416.

Kamgan Nkuekam G, Solheim H, De Beer ZW, Grobbelaar JW, Jacobs K, Wingfield MJ, Roux J, 2010. *Ophiostoma* species, including *Ophiostoma borealis* sp. nov., infecting wounds of native broad-leaved trees in Norway. *Cryptogamie Mycologie* **31**: 285-303.

Katoh K, Standley DM, 2013. MAFFT multiple sequence alignment software version 7: improvements in performance and usability. *Molecular Biology and Evolution* **30**: 772–780.

Lee CE, 2002. Evolutionary genetics of invasive species. *Trends in Ecology and Evolution* **17**: 386–391.

Leigh JW, Bryant D, 2015. POPART: full-feature software for haplotype network construction. *Methods in Ecology and Evolution* **6**: 1110–1116.

Linnakoski R, De Beer ZW, Duong TA, NiemeläP, Pappinen A, Wingfield MJ, 2012. *Grosmannia* and *Leptographium* spp. associated with conifer-infesting bark beetles in Finland and Russia, including *Leptographium taigense* sp. nov. *Antonie van Leeuwenhoek* **102**: 375–399.

Linnakoski R, De Beer ZW, Rousi M, NiemeläP, Pappinen A, Wingfield MJ, 2008. Fungi, including *Ophiostoma karelium* sp. nov., associated with *Scolytus ratzeburgi* infesting birch in Finland and Russia. *Mycological Research* **112**: 1475–1488.

Linnakoski R, De Beer ZW, Rousi M, Solheim H, Wingfield MJ, 2009. *Ophiostoma denticiliatum* sp. nov. and other *Ophiostoma* species associated with the birch bark beetle in southern Norway. *Persoonia* **23**: 9–15.

Luque J, Parladé J, Pera J, 2000. Pathogenicity of fungi isolated from *Quercus suber* in Catalonia (NE Spain). *Forest Pathology* **30**: 247-263.

Marincowitz S, Duong TW, De Beer ZW, Wingfield MJ, 2015. *Cornuvesica*: a little known mycophilic genus with a unique biology and unexpected new species. *Fungal Biology* **119**: 615-630.

Marsberg A, Kemler M, Jami F, Nagel JH, Postma-Smidt A, Naidoo S, Wingfield MJ, Crous PW, Spatafora JW, Hesse CN, Robbertse B, Slippers B, 2017. *Botryosphaeria dothidea*: a latent pathogen of global importance to woody plant health. *Molecular Plant Pathology* **18**: 477-488.

Mehl J, Wingfield MJ, Roux J, Slippers B, 2017. Invasive everywhere? Phylogeographic analysis of the globally distributed tree pathogen *Lasiodiplodia theobromae*. *Forests* **8**: 145.

Paciura D, Zhou XD, De Beer ZW, Jacobs K, Ye H, Wingfield MJ, 2010. Characterisation of synnematosus bark beetle-associated fungi from China, including *Graphium carbonarium* sp. nov. *Fungal Diversity* **40**: 75-88.

Ploetz RC, Hulcr J, Wingfield MJ, De Beer ZW, 2013. Destructive tree diseases associated with ambrosia and bark beetles: black swan events in tree pathology? *Plant Disease* **97**: 856-872.

Przybyl K, De Hoog GS, 1989. On the variability of *Ophiostoma piceae*. *Antonie van Leeuwenhoek* **55**: 177-188.

Roman J, Darling JA, 2007. Paradox lost: genetic diversity and the success of aquatic invasions. *Trends in Ecology and Evolution* **22**: 454-464.

Ronquist F, Huelsenbeck JP, 2003. Mr.Bayes 3: Bayesian phylogenetic inference under mixed models. *Bioinformatics* **19**:1572-1574.

Sakai AK, Allendorf FW, Holt JS, Lodge DM, Molofsky J, With KS, Baughman S, Cabin RJ, Cohen JE, Ellstrand NC, McCauley DE, O'Neil P, Parker IM, Thompson JN, Weller SG, 2001. The population biology of invasive species. *Annual Review of Ecology and Systematics* **32**: 305-332.

Sakalidis ML, Slippers B, Wingfield BD, Hardy GESJ, Burgess TI, 2013. The challenge of understanding the origin, pathways and extent of fungal invasions: global populations of the *Neofusicoccum parvum*-*N. ribis* species complex. *Diversity and Distributions* **19**: 873-883.

Santini A, Liebhold A, Migliorini D, Woodward S, 2018. Tracing the role of human civilization in the globalization of plant pathogens. *The ISME Journal* **12**: 647-652.

Santos PHD, Carvalho BM, Aquiar KP, Aredes FAS, Poltronieri TPS, Vivas JMS, Dias VM, Bezerra GA, Pinho DB, Pereira MG, Silveira SF, 2017. Phylogeography and population structure analysis reveals diversity by mutations in *Lasiodiplodia theobromae* with distinct sources of selection. *Genetics and Molecular Research* **16**: doi: 10.4238/gmr16029681.

Stamatakis A, 2014. RAxML version 8: a tool for phylogenetic analysis and post-analysis of large phylogenies. *Bioinformatics* **9**: 1312-1313.

Taerum SJ, Duong TA, De Beer ZW, Gillette N, Sun JH, Owen DR, Wingfield MJ, 2013. Large shift in symbiont assemblage in the invasive red turpentine beetle. *Plos One* **8**: e78126.

White TJ, Bruns T, Lee S, Taylor J, 1990. Amplification and direct sequencing of fungal ribosomal RNA genes for phylogenetics. In PCR Protocols: A Guide to Methods and Applications. Innis A.M., Gelfand D.H., Sninsky J.J., and White T.J. (eds). San Diego: Academic Press. pp. 315-322.

Wilken PM, Steenkamp ET, Hall TA, De Beer ZW, Wingfield MJ, Wingfield BD, 2012.

Both mating types in the heterothallic fungus *Ophiostoma quercus* contain *MAT1-1* and *MAT1-2* genes. *Fungal Biology* **116**: 427-437.

Wilson AM, Godlonton T, van der Nest MA, Wilken PM, Wingfield MJ, Wingfield BD, 2015. Unisexual reproduction in *Huntia moniliformis*. *Fungal Genetics and Biology* **80**: 1-9.

Wingfield MJ, Garnas JR, Hajek A, Hurley BP, De Beer ZW, Taerum SJ, 2016. Novel and co-evolved associations between insects and microorganisms as drivers of forest pestilence. *Biological Invasions* **18**: 1045-1056.

Wingfield MJ, Seifert KA, Webber J, 1993. *Ceratocystis* and *Ophiostoma*: taxonomy, ecology and pathogenicity. St. Paul: The American Phytopathological Society Press.

Yin M, Duong TA, Wingfield MJ, Zhou XD, De Beer ZW, 2015. Taxonomy and phylogeny of the *Leptographium procerum* complex, including two new species from China and Japan. *Antonie van Leeuwenhoek* **107**: 547-563.

Appendix A. Supplementary data

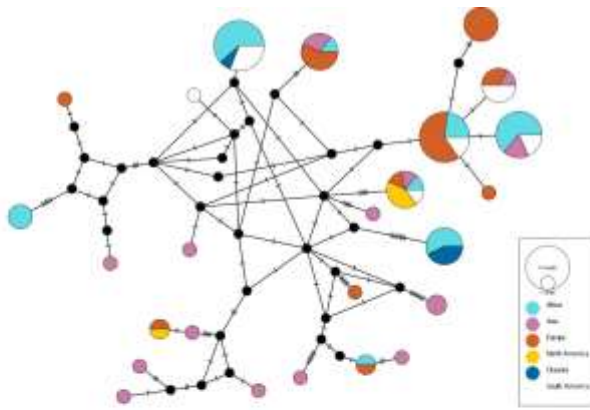
Table S1. Culture collection numbers and countries of origin of *O. quercus* cultures photographed in Figs. 2 and 3.

Figure #	Photo	Culture code	Country of origin
2a	A	CMW12287	China
2a	B	CMW16570	Austria
2a	C	CMW24632	New Zealand
2a	D	CMW19272	Norway
2a	E	CMW13245	France
2a	F	CMW41748	China
2a	G	CMW1564	Japan
2a	H	CMW14268	Chile
2a	I	CMW13245	France
2a	J	CMW41748	China
2a	K	CMW8527	Bhutan
2a	L	CMW1564	Japan
2a	M	CMW5631	Uruguay
2a	N	CMW5952	Uganda
2a	O	CMW17139	Malawi
2a	P	CMW19272	Norway
2b	A	CMW5631	Uruguay
2b	B	CMW5631	Uruguay
2b	C	CMW8527	Bhutan
2b	B	CMW12287	China
2b	E	CMW11278	Colombia
2b	F	CMW8284	Azerbaijan
2b	G	CMW1564	Japan
2b	H	CMW14268	Chile
2b	I	CMW19272	Norway
2b	J	CMW24632	New Zealand
2b	K	CMW5952	Uganda
2b	L	CMW1564	Japan
2b	M	CMW11278	Colombia
2b	N	CMW8527	Bhutan
2b	O	CMW17139	Malawi

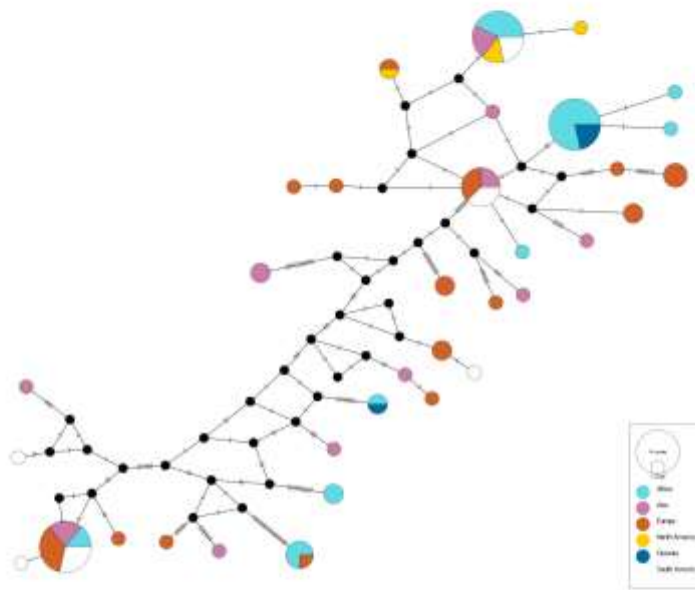


Fig S1. Maximum likelihood phylogenetic tree of *O. quercus* isolates and other fungi in the *O. ulmi* species complex based on ITS1-ITS2. Species names are preceded by their CMW culture collection codes or their GenBank accession number. The numbers next to the nodes represent statistical support, with the first values representing ML bootstrap proportions (if greater than 75), and the second values representing Bayesian posterior probabilities (if greater than 0.9).

βt



CAL



EF

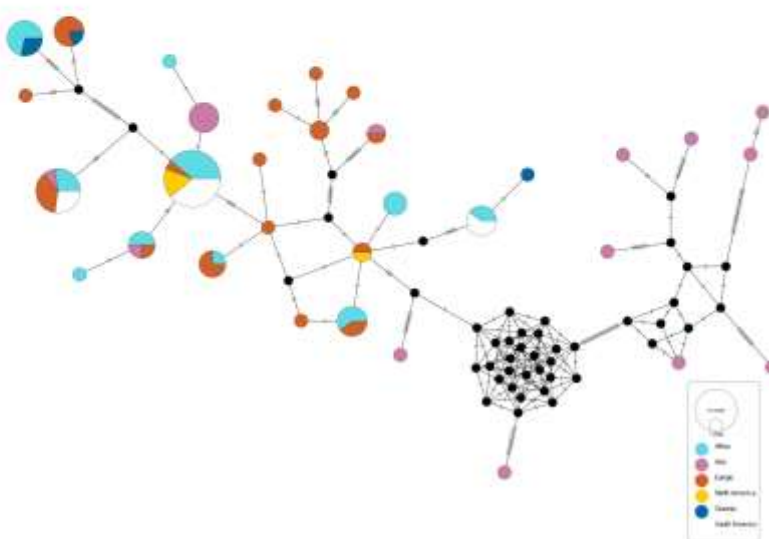
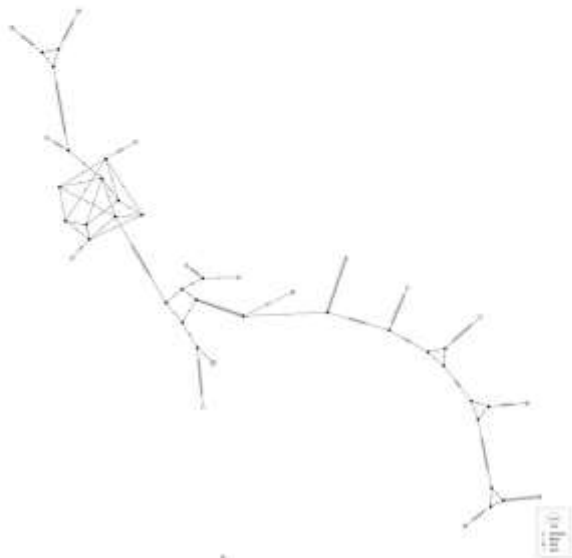


Fig S2. Median-joining network of *O. quercus* isolates collected globally, based on the individual gene datasets: **a.** βt , **b.** CAL and **c.** EF. Circle sizes are proportional to the number of isolates that share a haplotype. Colours represent continent of origin (see legends).

Africa



Asia



Europe



South America

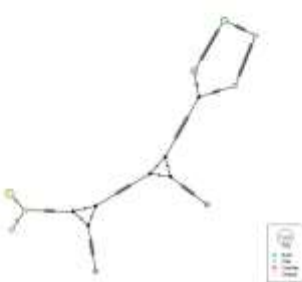


Fig S3. Median-joining network of *O. quercus* isolates collected from individual continents, based on the concatenated dataset: **a.** Africa, **b.** Asia, **c.** Europe, and **d.** South America. Circle sizes are proportional to the number of isolates that share a haplotype. Colours represent countries of origin (see legends).