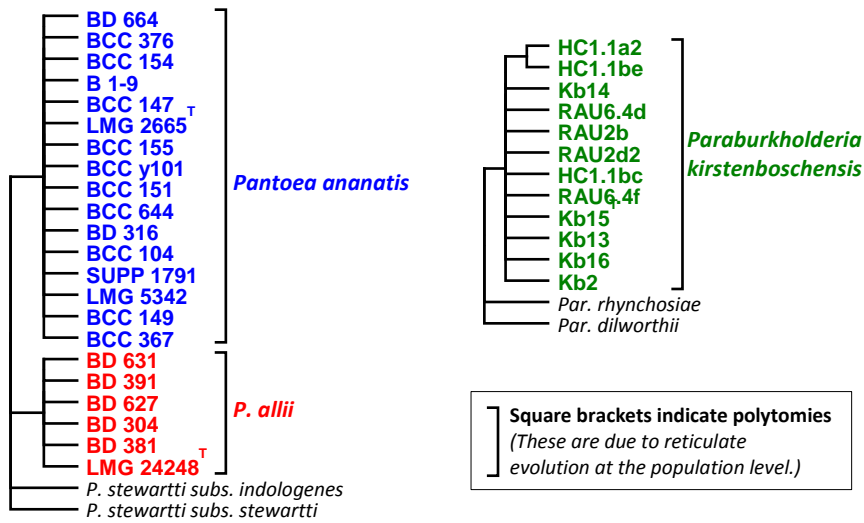


### Supplementary File 3



Strict consensus trees summarising the *atpD*, *gyrB*, *infB*, *ompF* and *pmrB* genealogies for *Pantoea allii* (this study) and the 16S rRNA, *recA*, *gyrB* and *rpoB* genealogies for *Paraburkholderia kirstenboschensis* (Steenkamp et al 2005).

## Genomes used

Isolate	Accession
<i>Pantoea ananatis</i> LMG 2665 T	JMJJ00000000
<i>Pantoea ananatis</i> LMG5342	HE617160.1 HE617161.1
<i>Pantoea ananatis</i> AJ13355	AP012032.2 AP012033.1
<i>Pantoea ananatis</i> B1-9	CAEI00000000
<i>Pantoea allii</i> LMG 24248 T	MLFE00000000
<i>Paraburkholderia kirstenboschensis</i> KB 15 T	JRZC00000000
<i>Paraburkholderia kirstenboschensis</i> Rau2d2	JRTU00000000
<i>Paraburkholderia caledonica</i> NBRC 102488	BAYE00000000
<i>Escherichia coli</i> DSM 30083 T	AGSE00000000
<i>Escherichia</i> Clade III TW09231	AEJW00000000
<i>Escherichia</i> Clade III TW09276	AEJV00000000
<i>Escherichia</i> Clade IV TW14182	AEJZ00000000
<i>Escherichia</i> Clade IV H605	Broad Institute
<i>Escherichia</i> Clade V E1118	Broad Institute
<i>Escherichia</i> Clade V TW09308	AEME00000000

**Average Nucleotide Identity (ANI) values calculated with JSpecies between four *Pan. ananatis***

	<i>Pan. ananatis</i> AJ13355	<i>Pan. ananatis</i> LMG 5342	<i>Pan. ananatis</i> B1-9	<i>Pan. ananatis</i> LMG 2665	<i>Pan. allii</i> LMG 24248
<i>Pan. ananatis</i> AJ13355	---	99	99.19	99.23	87.75
<i>Pan. ananatis</i> LMG 5342	99.07	---	99.12	99.04	87.74
<i>Pan. ananatis</i> B1-9	99.22	99.1	---	99.21	87.79
<i>Pan. ananatis</i> LMG 2665	99.22	98.97	99.18	---	87.69
<i>Pan. allii</i> LMG 24248	88.12	88.1	88.11	88.21	---

isolates and the type strain of *Pan. allii*

**Average Nucleotide Identity (ANI) values calculated with JSpecies between two *Par. kirstenboschensis* isolates and *Par. caledonica***

	<i>Par. kirstenboschensis</i> KB15	<i>Par. kirstenboschensis</i> Rau2D2	<i>Par. caledonica</i> NBRC102488
<i>Par. kirstenboschensis</i> KB15	---	96.37	92.11
<i>Par. kirstenboschensis</i> Rau2D2	97.18	---	91.98
<i>Par. caledonica</i> NBRC102488	92.65	91.76	---

**Average Nucleotide Identity (ANI) values calculated with JSpecies between the *E. coli* type strain and representatives of each of the *Escherichia* clades**

	<i>E. coli</i> DSM30038	Clade III TW09231	Clade III TW09276	Clade IV H605	Clade IV TW14182	Clade V E1118	Clade V TW09308
<i>E. coli</i> DSM30038	---	91.71	91.77	92.13	91.95	90.68	90.87
Clade III TW09231	91.82	---	98.39	96.4	96.3	92.08	92.15
Clade III TW09276	91.92	98.31	---	96.45	96.31	92	92.01
Clade IV H605	92.27	96.3	96.37	---	98.96	91.96	91.95
Clade IV TW14182	92.24	96.29	96.32	99.06	---	91.95	91.97
Clade V E1118	90.83	92.06	92.04	92.04	91.89	---	99.37
Clade V TW09308	90.89	92.09	92.02	91.95	91.88	99.3	---