

Fig A. Monthly precipitation and temperature data for Brisbane (Australia) and Durban (South Africa), and the monthly environmental distance (measured using Euclidean distance) between the two ports.

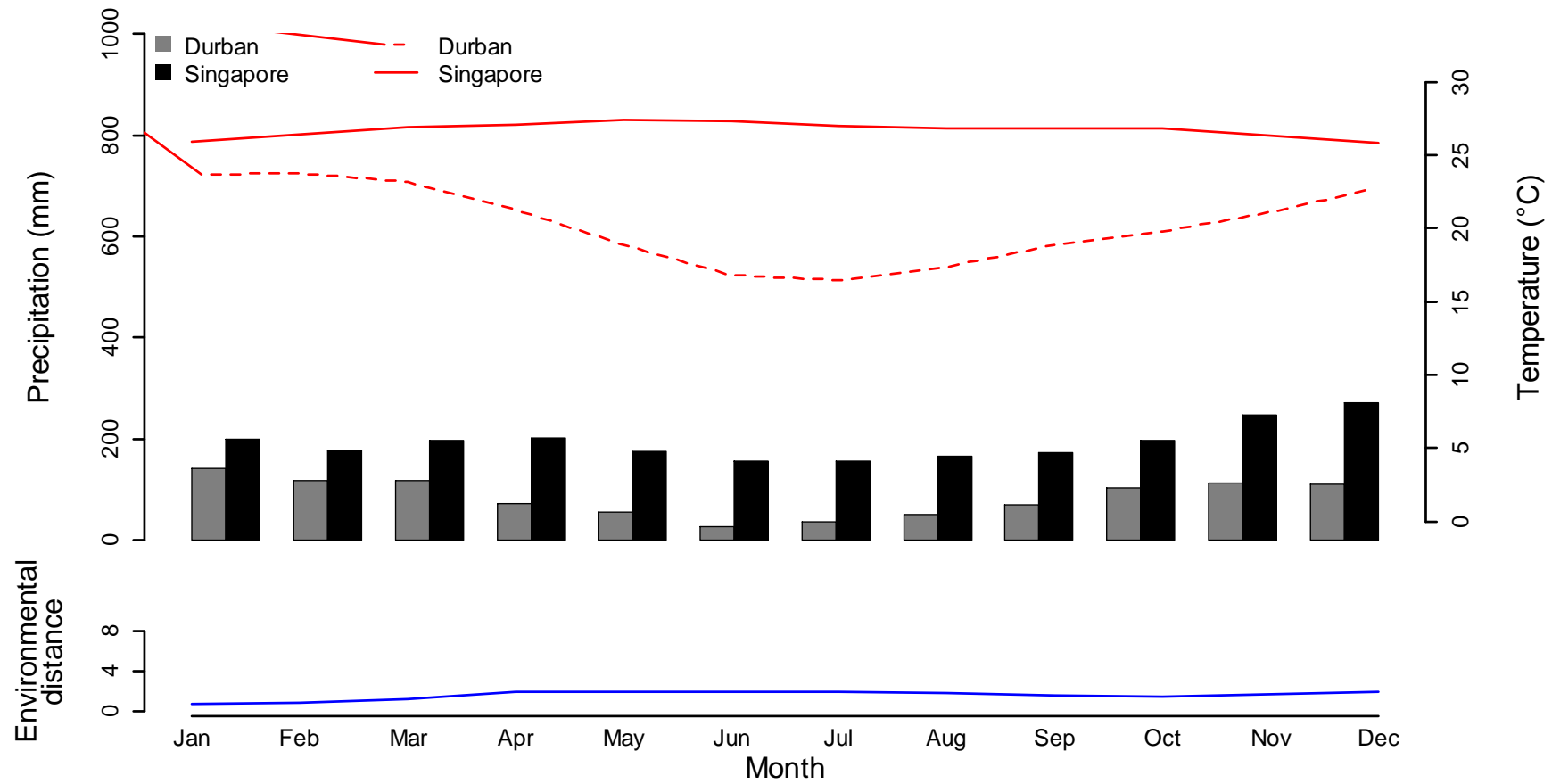


Fig B. Monthly precipitation and temperature data for Singapore and Durban (South Africa), and the monthly environmental distance (measured using Euclidean distance) between the two ports.

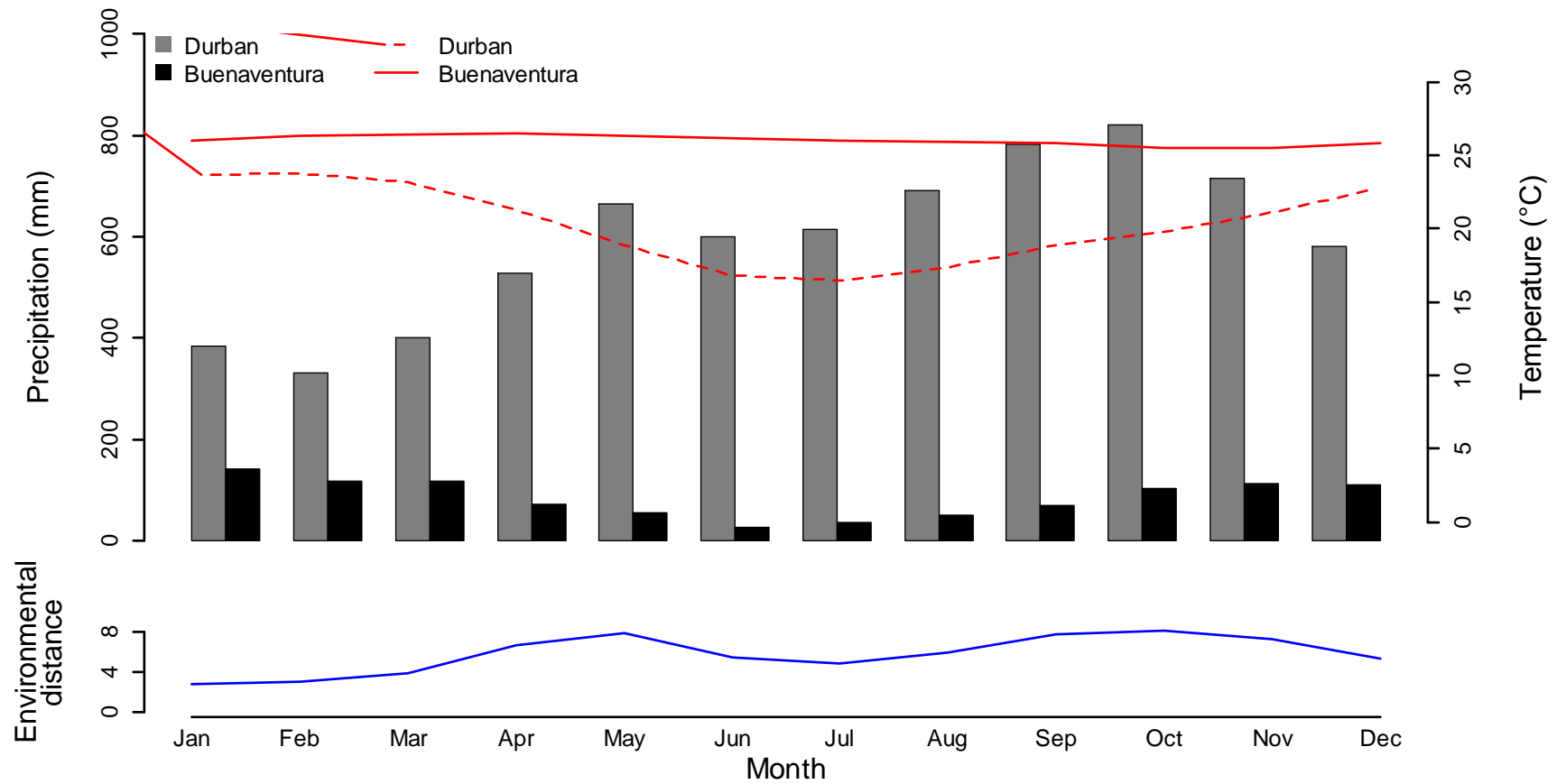


Fig C. Monthly precipitation and temperature data for Buenaventura (Colombia) and Durban (South Africa), and the monthly environmental distance (measured using Euclidean distance) between the two ports.