

FACTORS AFFECTING GROWTH OF RANGE CATTLE IN SEMI-ARID REGIONS.



Fig. 25.—Illustrating the type of country. Note dense bush and bare granite hills.



Fig. 26.—Type of unimproved cows used in the breeding operations.



Fig. 27.—Type of unimproved cows used in the breeding operations.



Fig. 28.—Sires of the Hereford half-breds.



Fig. 29.—Sires of the Shorthorn half-breds.



Fig. 30.—Sires of the Sussex half-breds.

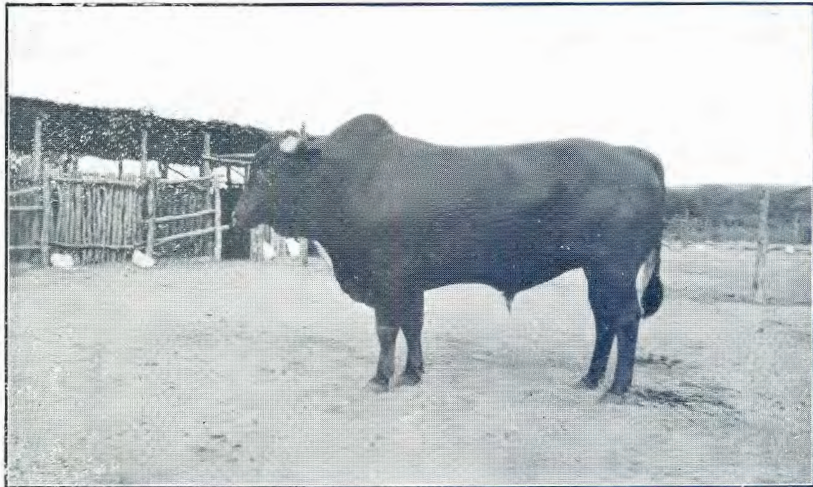
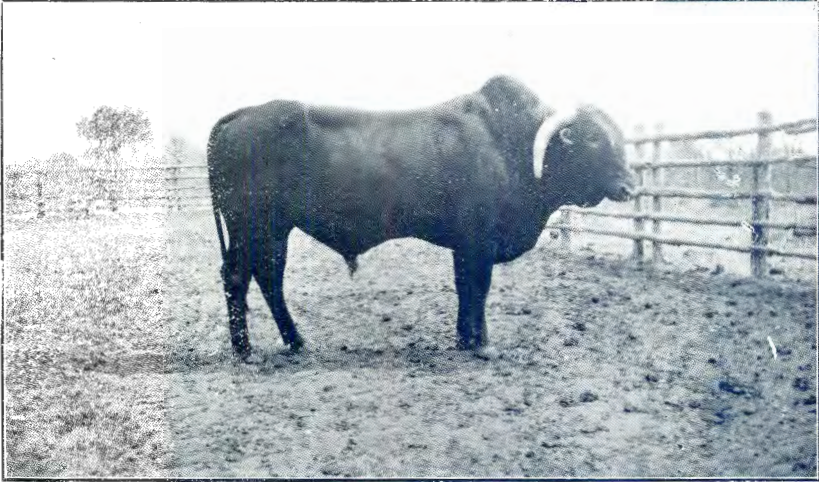


Fig. 31.—Sires of the Afrikander half-breds.



Fig. 32.—Sires of the Aberdeen-Angus half-breds.





Fig. 33.—Hereford half-bred calves.



Fig. 34.—Shorthorn half-bred calves.

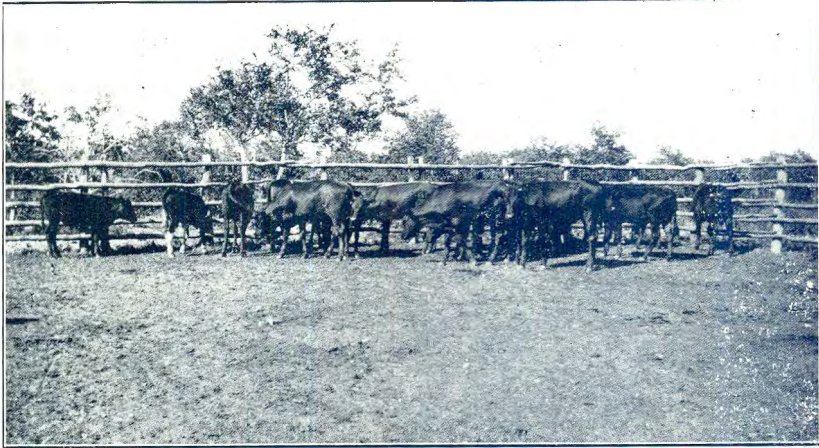


Fig. 35.—Sussex half-bred calves.



Fig. 36.—Afrikander half-bred calves.



Fig. 37.—Aberdeen-Angus half-bred calves.



Fig. 38.—Hereford half-bred cow.



Fig. 39.—Shorthorn half-bred cow.



Fig. 40.—Sussex half-bred cow.



Fig. 41.—Afrikander half-bred cow.



Fig. 42.—Afrikander half-bred cow.



Fig 43.—Aberdeen-Angus half-bred cow.