



10

conclusion

186



CULMINATION

This dissertation sought to investigate the ability of architecture to reduce the vulnerability of migratory populations within South Africa and, more specifically, Pretoria. It has demonstrated that through the consideration and analysis of community, context, form-making and technology that a sensitive architectural intervention may achieve this intention.

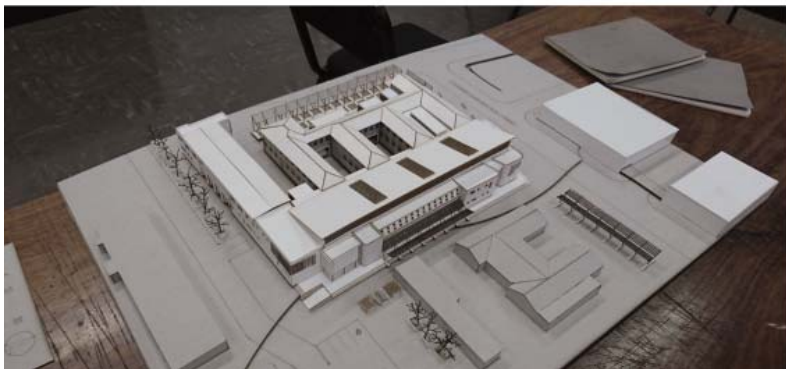
The intricate networks of a secretive and individual-oriented community were exposed to reveal new methods of conceptualising spatial formation. These included:

- The non-cohesive ‘third space’, inherently non-physical, open and flexible with the ability to accommodate exception and the mixing of difference into diverse, social constructs of space,
- The ‘looseness’ of space present in Marabastad, where the constant mixing of territories and associations of smooth and striated spaces culminate in a delicate balance between the formal and informal,
- Finally, the dialectical dependency expressed by the theoretical analysis and approach to space saw the opposing facets of the architectural commodity establishing an alternative to spatial interpretation. The tension formed between fetish and fossil, wish image and ruin allowed for the resulting architecture to expose the impact of both human nature, political will and the passage of time on architecture.

By reassessing and comprehending the needs of migratory population groups, the dissertation proposed a relevant programme that not only provided access to necessary humanitarian support facilities but also offered a platform for remuneration, meaningful employment and the promotion of tacit skills and knowledge. Originally intended for use by refugees and asylum seekers, the resultant knowledge and information centre has the added ability to serve local individuals, forming a socially cohesive environment that celebrates and documents the untold memories of new citizens and South Africans alike.

The approach developed in expressing the architecture, through form and technology, celebrates the difference of constituent elements. Drawing upon the contextual analysis, the spatial experience developed raises an awareness to the dynamic relationships and tensions perpetuated by the presence of international visitors in South Africa. Stereotomic, general spaces frame a flexible and fluid space between them, while providing the necessary services and support. Furthermore, the relationships between local and international, old and new, internal and external, and tectonic and stereotomic are exposed and celebrated for their difference.

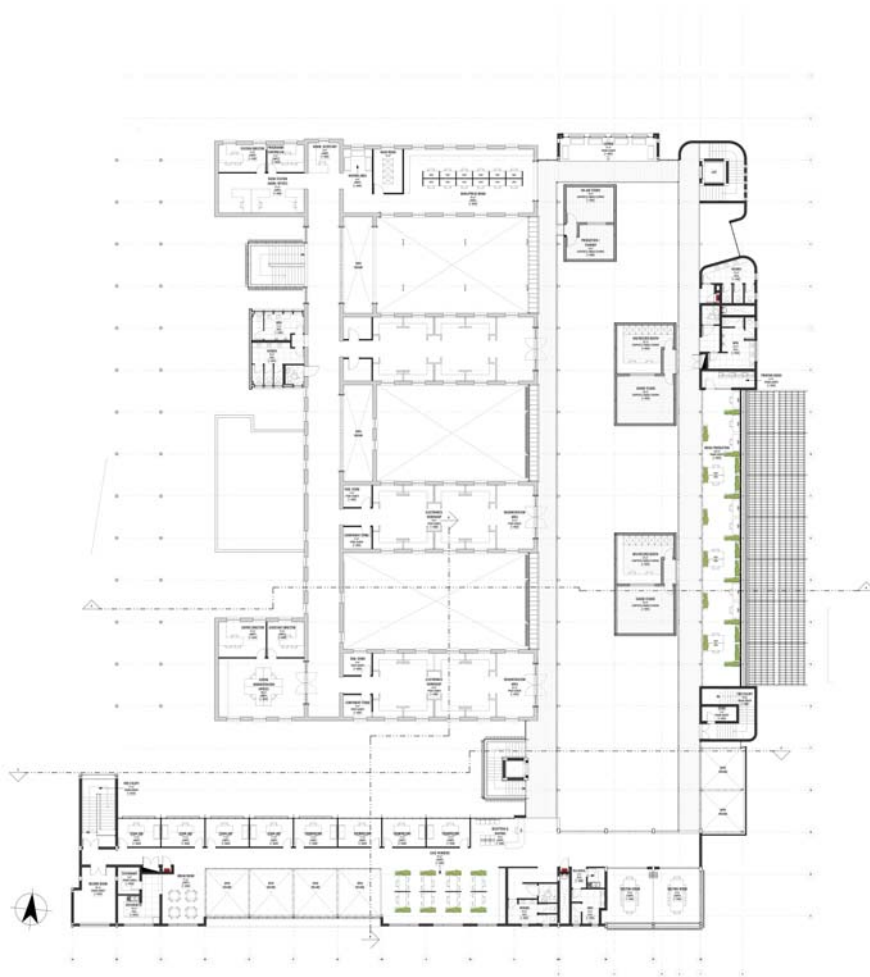
In conclusion, the Vulnerable Asylum establishes a viable architectural proposition capable of reducing the vulnerability of migratory individuals, offering a springboard for the newest citizens of South Africa.



189 | **Figure 10.1:** A series of photographs of the final site model and review presentation.



Figure 10.2: Ground floor plan of the Knowledge and Information Centre (not to scale).



FIRST FLOOR PLAN



Figure 10.4: Perspective drawing of the collaborative market space.



VIEW OF MAIN ENTRANCE (*Northern facade*)



VIEW OF MULTIPURPOSE HALL (Southern block)



Figure 10.6: View of the multipurpose hall.

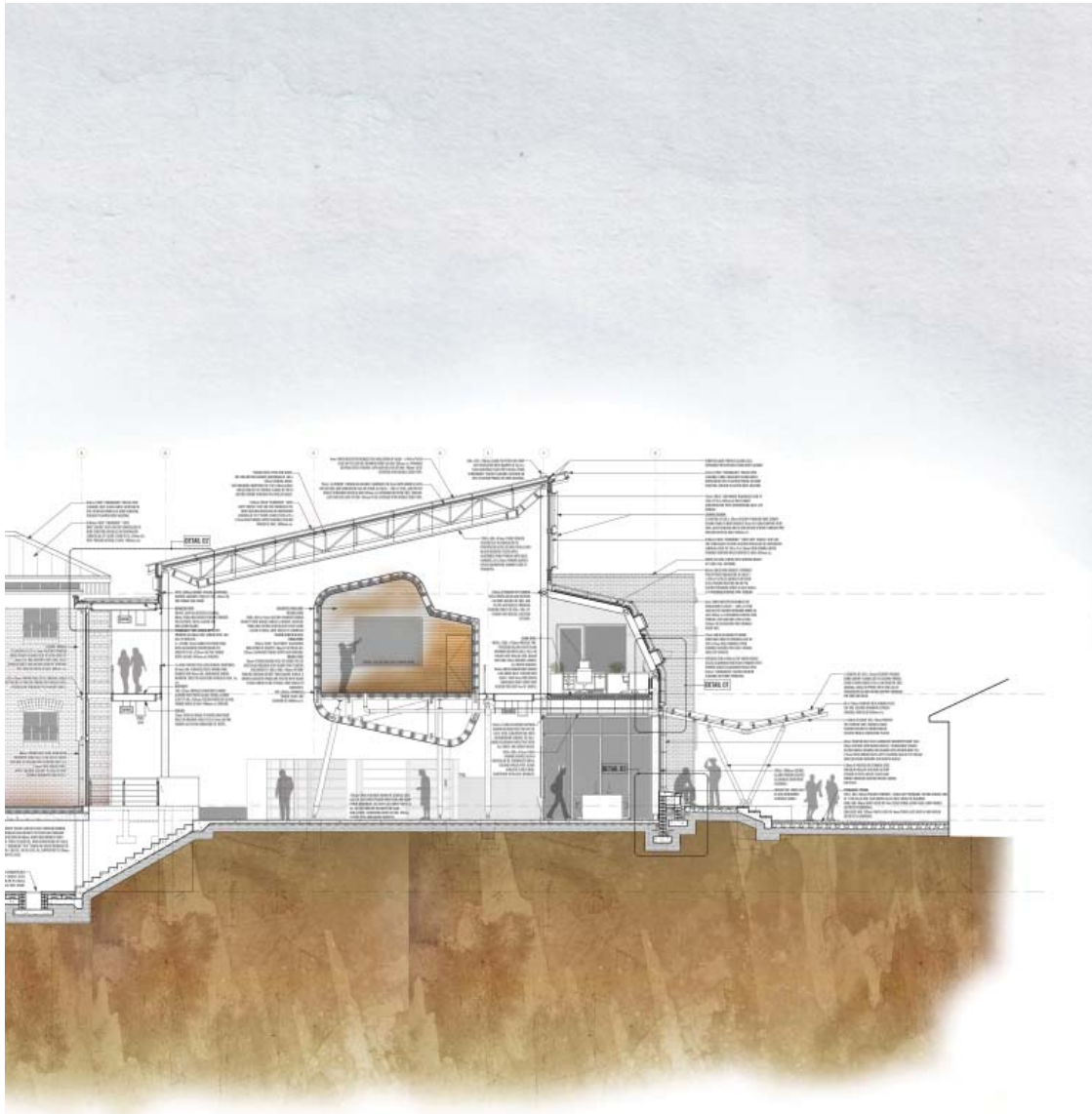




Figure 10.8: Perspective drawing of the private courtyard space.



197 | **Figure 10.9:** Main cross section through the Information Centre.



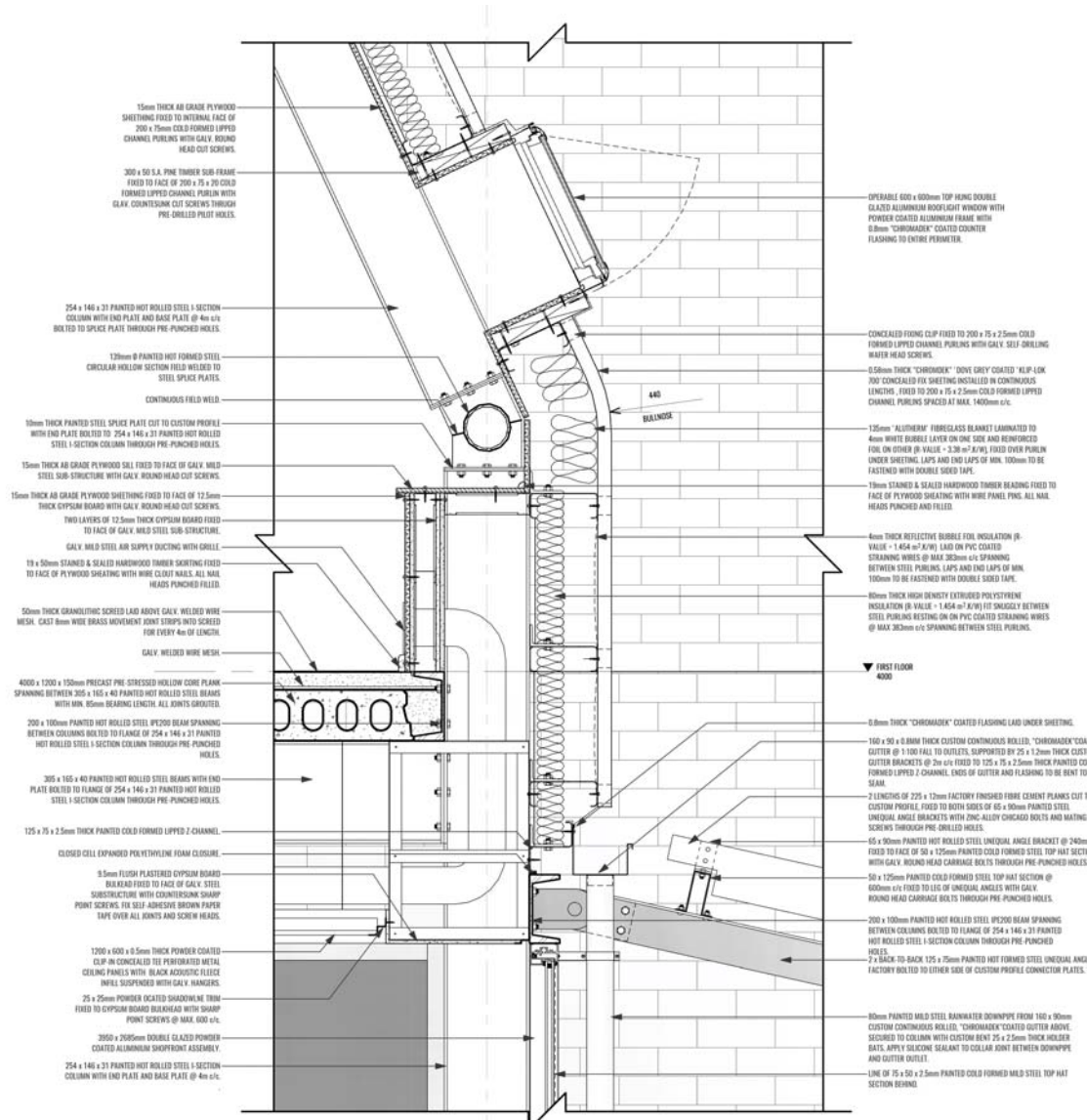


Figure 10.10: Detail drawing of the intermediary floor intersection (not to scale).

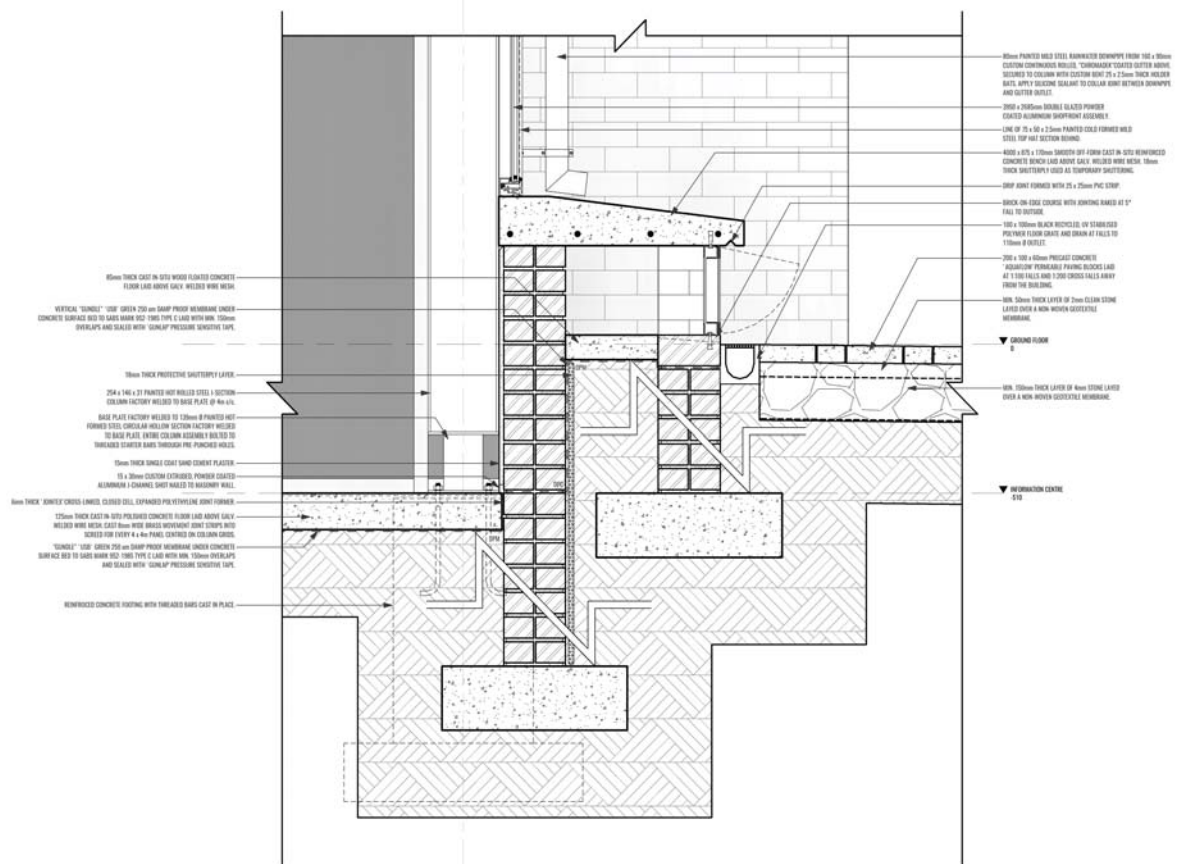
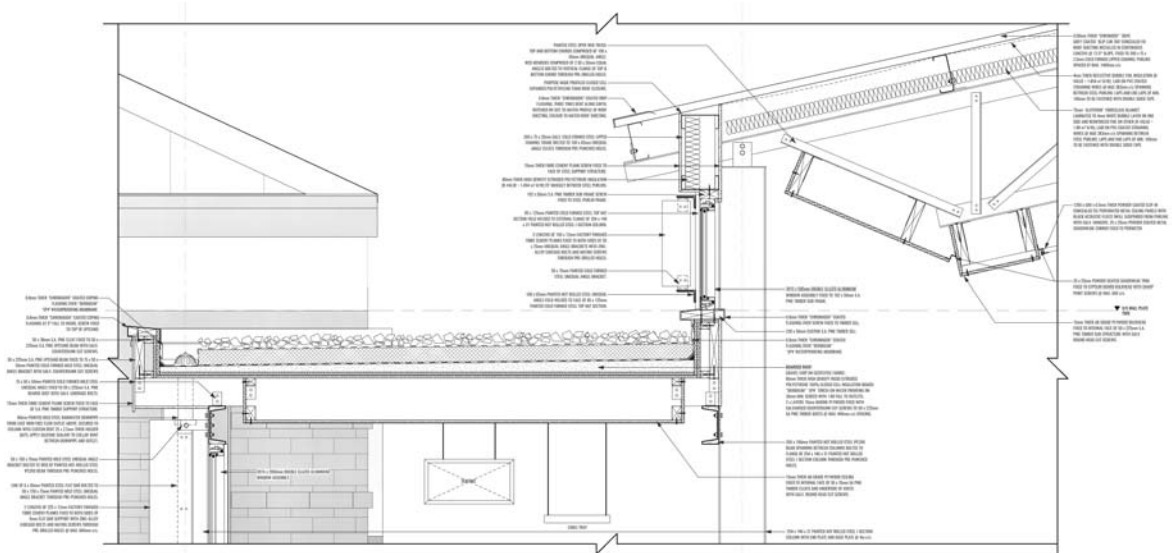


Figure 10.11: Detail indicating the ground intersection (not to scale).



201 | **Figure 10.12:** Detail drawing of the roof intersection (not to scale).



REFERENCES

• • •

- AGAMBEN, G., 1998, *Homo Sacer: Sovereign Power and Bare Life*, Stanford University Press, Stanford
- AUERBACH, A., 'Imagine no Metaphors: the Dialectical Image of Walter Benjamin', *Image & Narrative: Online Magazine of the Visual Narrative*, Issue 18, September 2007, pp. 1-15, viewed 09 January 2016 from http://www.imageandnarrative.be/inarchive/thinking_pictures/auerbach.html
- BBC n.d., 'This migrant crisis is different from all others', viewed 05 January 2016, from <http://www.bbc.com/news/world35091772>
- BHABHA, H., 1998, 'On the Irremovable Strangeness of Being Different', *PMLA*, Vol. 113, No. 1, pp. 34-39
- BOANO, C., 2011, 'Violent Spaces: Production and Reproduction of Securities and Vulnerabilities', *The Journal of Architecture RIBA*, February 2011, Vol. 16, No. 1, Routledge, London
- BODY-GENDROT, S. & BEAUREGARD, R. A., 1999, 'Imagined Cities, Engaged Citizens', in R. A. Beauregard & S. Body-Gendrot (eds.), *The Urban Moment: Cosmopolitan Essays on the Late 20th Century City*, pp. 3-22, Thousand Oaks, California.
- BREMNER, L., 2010, *Writing the City into Being: Essays on Johannesburg 1998 - 2008*, Fourthwall Books, Johannesburg, South Africa.
- BUCK-MORSS, S., 1989, *The Dialectics of Seeing: Walter Benjamin and the Arcades Project*, The MIT Press, Cambridge, Massachusetts.
- BUNN, D., 2008, 'Art Johannesburg and Its Objects', in S. Nuttall & A. Mbembe (eds.), 2008, *Johannesburg: The Elusive Metropolis*, pp. 137-169, Duke University Press, USA
- CLEAR, N. & BORDEN, I., 'Urbanisms', in L. Allen, I. Borden, N. O'Hare, & N. Speller (eds.), 2009, *Bartlett designs: speculating with architecture*, pp. 242-243, John Wiley & Sons Ltd., United Kingdom.
- COLEMAN, K., n.d., 'Peckham Library', USC School of Architecture, University of Southern California, USA, viewed 05 October 2016, from http://www-bcf.usc.edu/~kcoleman/Precedents/ALL%20PDFs/Alsop-Stormer_PeckhamLibrary.pdf
- Community for Media Development Productions (CMFD), n.d., *About CMFD*, viewed 28 July 2016 from <http://www.cmfd.org/about>
- CONSTABLE, M., 1993, 'Sovereignty and Governmentality in Modern American Immigration Law', *Studies in Law, Politics, and Society*, No. 13, pp. 249-71
- CRUSH, J., 1999, 'Fortress South Africa and the Deconstruction of Apartheid's Migration Regime', *Geoforum*, No. 30, pp 1-11

- CRUSH, J., and DOBSON, B., 2007, 'Another Lost Decade: The Failures of South Africa's Post-apartheid Migration Policy', *Tijdschrift voor Economische en Sociale Geografie*, Vol. 98, No. 4, pp 436-454
- DE KLERK, M., 2015, 'Pathways Out of Homelessness', Research Report, University of Pretoria
- Department of Home Affairs (DHA), 1997, *Draft Green Paper on International Migration*, Department of Home Affairs, South Africa
- Department of Home Affairs (DHA), 1999, *White Paper on International Migration*, Department of Home Affairs, South Africa
- DEWAR, D. & UYTENBOGAARDT, R. S., *South African Cities: A Manifesto for Change*, University of Cape Town, Mills Litho (Pty) Ltd., Cape Town
- DE WET, P., 2015, "Money for papers' at home affairs", *Mail & Guardian*, 24 July, viewed 28 August 2016 from <http://mg.co.za/article/2015-07-23-money-for-papers-at-home-affairs>
- DRAKAKIS-SMITH, D., 2000, *Third World Countries*, Routledge, London.
- EALES, K. A., 1987, 'Patriarchs, Passes and Privilege: Johannesburg's African Middle Classes and the question of night passes for African Women, 1920 - 1931', *The Making of Class, History Workshop Conference, 9-14 February*, University of the Witwatersrand, Johannesburg viewed 07 March 2016 from <http://wiredspace.wits.ac.za/bitstream/handle/10539/7776/HWS-108.pdf?sequence=1>
- EASTERLING, K., 2005, *Enduring Innocence: Global Architecture and its Political Masquerades*, MIT Press, Cambridge, MA
- FILIPE, C., 2012, 'Remanufactory: The Typological Inheritance of Industrial Architecture in the Age of Digital Consumption', Masters Dissertation, Department of Architecture, University of Pretoria
- FOUCAULT, M., 1984, 'Of Other Spaces: Utopias and Heterotopias', viewed 18 February 2016 from <http://web.mit.edu/allanmc/www/foucault1.pdf>
- FREARSON, A., 2012, 'Civic Centre in Palencia by Exit Architects and Eduardo Delgado Orusco', viewed 05 May 2016, from <http://www.dezeen.com/2012/04/20/civic-centre-in-palencia-by-exit-architects/>
- FRIEDMAN, M., 1990, 'Tshaya! He has our Money! The Uprising of the Municipal Compound Workers in Marabastad, 1942', *History Workshop Conference 1990*, University of the Witwatersrand, Johannesburg, viewed 07 March 2016 from <http://wiredspace.wits.ac.za/bitstream/handle/10539/7813/HWS-126.pdf?sequence=1>

- FRIEDMAN, M., 1994, *A History of Africans in Pretoria with Special Reference to Marabastad: 1902-1923*, University of South Africa, Pretoria
- FYFE, N. R., 1998, 'Introduction: Reading the Street', *Images of the Street: Planning, Identity, and Control in Public Space*, N. R. Fyfe (ed.), pp. 1-13, Routledge, London
- GALABOVA, A., 2012, 'Integr[ity]8: Re-integrative Refugee Reception Facility', Masters Dissertation, School of Architecture & Planning, University of the Witwatersrand, Johannesburg
- GARRETT, N., 2011, '[Re]writing New Layers: Inscribing Refugee Communities into the City', Masters Dissertation, School of Architecture & Planning, University of the Witwatersrand, Johannesburg
- GORDON, S. L., 'Migrants in a "State of Exception"', *Transcience Journal*, Vol. 1 No. 1, 2010, pp. 3-21, viewed 05 January 2016, from http://www2.hu-berlin.de/transcience/Vol1_Issue1_2010_3_21_gordon.pdf
- GROBBELAAR, L., 2011, 'New Royal Theatre: The Marabi Theatre as Locus for Cultural Reproduction', Masters Dissertation, Department of Architecture, University of Pretoria
- GROBLER, J. E. H., 1992, 'The Marabastad Riot, 1942', *Contree*, 32/1992, Department of History and Cultural History, University of Pretoria
- GROÁK, S., 1992, *The Idea of Building: Thought and Action in the Design and Production of Buildings*, E & FN Spon, London
- HARVEY, D., 2003, 'The Right to the City', *International Journal of Urban and Regional Research*, 27 (4), pp. 939-941
- HERZOG & DE MEURON, 1988 in G. MACK (ed.), 1978-1988. *The Complete Works*, Vol. No. 1, 1997, pp. 207-2011 Birkhäuser, Basel/Boston/Berlin.
- HOLSTON, J., 1999, 'Spaces of Insurgent Citizenship', viewed 22 February 2016 from <http://tiranaworkshop09.pbworks.com/f/James+Holston+spaces+of+insurgent+citizenship.pdf>
<http://citeseerx.ist.psu.edu/viewdoc/download?doi=10.1.1.227.1856&rep=rep1&type=pdf>
- Human Sciences Research Council (HSRC), 2008, *Citizenship, Violence, and Xenophobia in South Africa: Perceptions from South African Communities*, Human Sciences Research Council, Pretoria
- International Council of Monuments and Sites (ICOMOS), 1999, *The Burra Charter: The Australia ICOMOS Charter for Places of Cultural Significance 1999*, ICOMOS, Australia, viewed 28 August 2016 from http://australia.icomos.org/wp-content/uploads/BURRA_CHARTER.pdf
- JACOBS, J., 1992, *The Death and Life of Great American Cities*, Vintage Books edn., Vintage Books, New York.

- LYNCH, K., 1972, *What Time is this Place?*, MIT Press, Cambridge, MA
- MAHARAJ, B., 2004, *Global Migration Perspectives: Immigration to Post-apartheid South Africa*, Global Commission on International Migration, Geneva
- MATSHIKIZA, J., 2008, 'Instant City', in S. Nuttall & A. Mbembe (eds.), 2008, *Johannesburg: The Elusive Metropolis*, pp. 221-238, Duke University Press, USA
- MBEMBE, A., 2008, 'Aesthetics of Superfluity', in S. Nuttall & A. Mbembe (eds.), 2008, *Johannesburg: The Elusive Metropolis*, pp. 37-67, Duke University Press, USA
- MBEMBE, A., 2008, 'Aesthetics of Superfluity', in S. Nuttall & A. Mbembe (eds.), 2008, *Johannesburg: The Elusive Metropolis*, pp. 37-67, Duke University Press, USA
- McDONALD, D. (ed.), 2000, *On Borders: Perspectives on Cross-border Migration in Southern Africa*, St. Martin's Press, New York
- MHAGAMA, P. M., 2004, 'The Role of Community Media in Development: A Case Study of the Cato Manor Development Project', Faculty of Human Sciences, University of KwaZulu-Natal, viewed 18 March 2016 from <http://ccms.ukzn.ac.za/files/docs/Mhagama%20MA.pdf>
- MURRAY, M. J. & MYERS, G. A. (eds.), 2006, *Cities in Contemporary Africa*, Palgrave Macmillan, New York
- MURRAY, N., SHEPHERD, N. & HALL, M., 2007, *Desire Lines: Space, Memory and Identity in the Post- Apartheid City*, Routledge, United Kingdom.
- NAIDOO, M., 2007, *Stories from the Asiatic Bazaar (Marabastad Asiatic Bazaar)*, viewed 07 March 2016 from http://www.muthalnaidoo.co.za/component/docman/doc_download/6-marabastad-asiatic-bazaar
- Native Economic Commission, 1931, *Minutes of Evidence 18 May 1931*, pp. 8060-8142, viewed 16 May 2016 from http://www.historicalpapers.wits.ac.za/inventories/inv_pdfo/AD1438/AD1438-B8-9-001-jpeg.pdf
- NLÉ Works, 2014, *Chicoco Radio*, viewed 05 October from <http://www.nleworks.com/case/chicoco-media-centre/>
- NYAMNJOH, F. B., 2006, *Insiders and Outsiders, Citizenship and Xenophobia in Contemporary Southern Africa*, ZED Books, London
- O'MALLEY, P., n.d., '1913. Natives Land Act No. 27', *Nelson Mandela Centre of Memory*, viewed 07 March 2016 from <https://www.nelsonmandela.org/omalley/index.php/site/q/03lv01538/04lv01646/05lv01745.htm>

- PENSKY, M., 'Method and time', in D.S. Ferris (ed.), 2004, *The Cambridge Companion to Walter Benjamin*, pp. 177-198, Cambridge University Press, viewed 09 January 2016 from <https://www.binghamton.edu/philosophy/people/docs/pensky-method-time.pdf>
- RABKIN, F., 2015, 'SA's refugee offices rife with bribes, says report', *Business Day LIVE*, 22 July 2015, viewed 05 January 2016, from <http://www.bdlive.co.za/national/2015/07/22/sasrefugeeofficesrifewithbribessaysreport>
- RATLEBJANE, M., 2016, 'Home Affairs is on the up', *Mail & Guardian*, 18 March, viewed 28 August 2016 from <http://mg.co.za/article/2016-03-17-home-affairs-is-on-the-up>
- ROSS, F., 1996, 'Diffusing Domesticity: Domestic Fluidity in Die Bos', *Social Dynamics*, Vol. 22, No. 1, pp. 55-71, Taylor & Francis,
- SHIFFRIN, R. M. & SCHNEIDER, W., 1977, 'Controlled and Automatic Human Information Processing: II. Perceptual Learning, Automatic Attending, and a General Theory', *Psychological Review*, Vol. 84 No. 2, March 1977, pp. 127-190, viewed 08 May 2016, from
- SIMONE, A., 2008, 'People as Infrastructure: Intersecting Fragments in Johannesburg', in S. Nuttall & A. Mbembe (eds.), 2008, *Johannesburg: The Elusive Metropolis*, pp. 37-67, Duke University Press, USA
- SOJA, E., 2002, *Postmetropolis: Critical Studies of Cities and Regions*, Blackwell, London.
- South African History Online (SAHO), 2013, *Natives Land Act, Act No 27 of 1913*, viewed 07 March 2016 from <http://www.sahistory.org.za/archive/natives-land-act-act-no-27-1913>
- TALLY, R. T., 2013, *Spatiality (The New Critical Idiom)*, Routledge, Abingdon.
- The Department of Home Affairs (DHA), n.d, *Refugee Status & Asylum*, The Department of Home Affairs, South Africa, viewed 05 January 2016, from <http://www.dha.gov.za/index.php/immigration-services/refugee-status-asylum>
- TROMP, N., 2016, 'Reflection on a Human Rights Crisis', *Architecture S.A.*, Issue 78 March/April 2016, pp. 24-26, Picasso Headline, South Africa
- TSHITEREKE, C., 1999, 'Xenophobia and Relative Deprivation', *Crossings*, 3(2), pp. 4-5
- United Nations Educational, Scientific and Cultural Organisation (UNESCO), 2013, 'World Heritage Resource Manual: Managing Cultural World Heritage', UNESCO, Paris, viewed 28 August 2016 from <http://whc.unesco.org/document/125839>
- United Nations High Commissioner for Refugees (UNHCR), n.d., *What We Do*, viewed 26 March 2016 from <http://www.unhcr.org/what-we-do.html>

- VAN DEN TOORN, M., & GUNEY, A., 2011, 'Precedent Analysis in Landscape Architecture; In Search of an Analytical Framework', Faculty of Architecture Delft University, Delft University of Technology, Holland, viewed 05 October 2016, from <http://repository.tudelft.nl/islandora/object/uuid:8d636c82-4f65-44af-a410-a8831bc16d2e/datastream/OBJ/download>
- VAN DER WESTHUIZEN, R., 2009, 'A Public Bathhouse', Masters Dissertation, Department of Architecture, University of Pretoria
- VAN EEDEN, H., 2013, 'Machinarium', Masters Dissertation, Department of Architecture, University of Pretoria
- VENTURI, R., 1966, *Complexity and Contradiction in Architecture*, Museum of Modern Art, New York
- Youth for Survival, n.d., *What We Do*, viewed 28 July 2016 from <http://www.youthforsurvival.org.za/What-We-Do/>
- ZEMBYLAS, M., 2009, 'Global Economies of Fear: Affect, Politics and Pedagogical Implications, *Critical Studies in Education*, 50(2), pp. 1-13
- CIBSE, 2013, 'Ground Source Heat Pumps - CIBSE TM51: 2013', CIBSE, viewed 25 October 2016 from <http://app.knovel.com/hotlink/toc/id:kpGSHPCIBE/ground-source-heat-pumps/ground-source-heat-pumps>
- FOX, A., 2011, 'Students' Biodigesters Close The Loop', *Biocycle*, vol. 52, no. 4, pp. 48-50, viewed 25 October 2016 from <http://search.proquest.com.uplib.idm.oclc.org/docview/864291836/fulltextPDF/5575E583E678410DPQ/1?accountid=14717>

LIST OF FIGURES

• • •

Figure 1.1: Photograph : ‘3.00 a.m.: Early passengers on the Wolwekraal-Marabastad bus’ 1984 Gelatin-silver print Museum no. Ph.65-1987 (Source: David Goldblatt, adapted by Author, 2016).

Figure 1.2 (top): Aerial photograph indicating a vacuum border state (Department of Geography, GIS, University of Pretoria, adapted by Author, 2016).

Figure 1.3 (bottom): Diagram of the sprawl condition typical of urbanisation in Pretoria (Author, 2016).

Figure 1.4: The extent of cross-border migration experienced in South Africa (Author, 2016).

Figure 1.5 (top): Diagram indicating the latent and insurgent energies associated with ‘ruins’ of utopia (adapted from Holston, 1999 by Author, 2016).

Figure 1.6 (bottom): Diagram illustrating the intention of an energy capacitor (adapted from Holston, 1999 by Author, 2016).

Figure 1.7: Diagram indicating the envisioned incremental development surrounding insurgent capacitors (Author, 2016).

Figure 2.1: Photograph: ‘An African migrant covers his mouth with tape during a protest in Tel Aviv last year’ (Original photograph available online: http://www.thenational.ae/storyimage/AB/20150604/STORYGALLERY/150609535/EP/1/1/EP-150609535.jpg&MaxW=960&imageVersion=default&NCS_modified=20150605113615, adapted by Author, 2016).

Figure 2.2: A map indicating the extent conflicts present in the countries of Africa (Source: Garrett 2011:23 adapted by Author).

Figure 2.3: A graph indicating the influx of migrants into South Africa between 1998 & 2014 (Source: UNHCR Statistical Yearbook 1998 - 2014 adapted by Author).

Figure 2.4 (top): Diagram indicating the political existence of refugees entering South Africa (Source: Garrett 2012:35 adapted by Author).

Figure 2.5 (middle): Diagram illustrating the main reasons behind migrants fleeing their homes (Source: Galabova 2012:27 adapted by Author).

Figure 2.6 (bottom): Diagram illustrating the primary settlement areas for economic refugees (Source: Galabova 2012:27 adapted by Author).

Figure 2.7: A diagrammatic representation of the perceived threat of foreigners as expressed by xenophobic South Africans (Source: McDonald 2000 adapted by Author).

Figure 2.8 (top): Diagram of the different modes of transport used by refugees to enter South Africa (Source: Garrett 2012: 31 adapted by Author).

Figure 2.9 (bottom): Diagram capturing the various phases of migration including the emotional & physical challenges faced along the way (Source: Galabova 2012:29 adapted by Author).

Figure 2.10: A diagrammatic representation of the spatial production as conceived by Bhabha's 'third space'.

Figure 3.1: Photograph: 'A Boy Climbing Through the West Bank Barrier' (Original photograph available online: <http://archive.doobybrain.com/2009/02/17/a-boy-climbing-through-the-west-bank-barrier/>, adapted by Author, 2016).

Figure 3.2: An aerial photograph indicating the location of the study area in relation to Church Square (Source: City of Tshwane Geographical Information Systems, viewed 03 February 2016 from http://www.tshwane.gov.za/Sites/About_Tshwane/MapsAndGIS/Pages/Tshwane-Geographic-Information-and-Aerial-Photos.aspx adapted by Author).

Figure 3.3: The urban elements that extend the qualities of the vacuum border state present in Marabastad.

Figure 3.4: A montage of the Utopian influences that led to the development of Marabastad.

Figure 3.5: Historical development of Marabastad from 1879 - 1936 (Unknown sources, compiled by Author, 2016).

Figure 3.6 (top): Comparative aerial photographs of Marabastad from 1934 - 1998 (Source: Meyer, Pienaar, Tayob Architects & Urban Designers, 1998).

Figure 3.7 (bottom): Photograph of Old Marabastad c. 1890 indicating an inherently transient environment (Source: University of Pretoria Afrikaans Collection, adapted by Author, 2016).

Figure 3.8: A map indicating the forced removal of residents from Marabastad to outlying townships (Source: Meyer, Pienaar, Tayob Architects & Urban Designers, 1998, adapted by Author).

Figure 3.9: A layout drawing showing the extent and impact of the proposed freeway scheme of 1967 (Source: Meyer, Pienaar, Tayob Architects & Urban Designers, 1998, adapted by Author).

Figure 3.10: Aerial photograph of study area indicating major public transport nodes and the resultant pedestrian flows between them. (Source: van der Westhuizen, 2009, adapted by Author).

Figure 3.11: Historical movement patterns into Marabastad from outlying townships (Source: Meyer, Pienaar, Tayob Architects & Urban Designers, 1998, adapted by Author).

Figure 3.12 (right): A comparative density study capturing the formation of voids within Marabastad (Source: Meyer, Pienaar, Tayob Architects & Urban Designers, 1998, adapted by Author).

Figure 3.13 (left): An indication of the imbalance between general and specific space within Marabastad.

Figure 3.14: Aerial photograph of study area highlighting the latent 'ruins' of utopian insertion. (Source: Hough, Nicha & Patrick, 2016, adapted by Author).

Figure 3.15: Urban mapping showing the activities that have appropriated the voids left behind by utopian insertions into the fabric of Marabastad. (Source: Hough, Nicha & Patrick, 2016, adapted by Author).

Figure 3.16: Urban mapping indicating relationship between primary retail, secondary retail and informal trade (Source: Hough, Nicha & Patrick, 2016, adapted by Author).

Figure 3.17: Urban mapping documenting the extensive informal trade activities present in Marabastad (Source: Hough, Nicha & Patrick, 2016, adapted by Author).

Figure 3.18: A visual interpretation of the constant mixing of smooth and striated space in Marabastad (Source: Bremner, 2010 & Grobbelaar, 2011 adapted by Author).

Figure 3.19: A photographic montage indicating the qualities of the smooth spaces appropriating the voids between striated spaces.

Figure 4.1: Floor plan of the Old Native Reception Depot building (Source: Department of Architecture, University of Pretoria, 1995).

Figure 4.2: An aerial photograph indicating position of proposed site in relation to Marabastad.

Figure 4.3: An aerial photograph of the proposed site and its significant neighbours.

Figure 4.4 (top): Photographs of the Municipal Compound and Tin Town (Source: Grobler, 1992).

Figure 4.5 (bottom): Aerial photograph of the Municipal Workers Compound and Old Native Reception Depot (Source: Department of Public Works, 1937, adapted by Author).

Figure 4.6: A bird's-eye view of the site (Source: Google Maps, 2016, adapted by Author).

Figure 4.8 (left): A series of photographs capturing the insurgent activities that populate the informal waiting area outside the Refugee Reception Office. (Source (top to bottom): de Wet, 2015; Author, 2016; Ratlebjane, 2016).

Figure 4.9 (right): The cyclical schedule of international visitors to the site.

Figure 4.10: Flow diagram indicative of the Burra Charter Process (Source: Burra Charter, 1999).

Figure 4.11: Diagrammatic expression of Lynch's approach to heritage architecture (Source: Harrison, Hough, Sibanda, 2015, adapted by Author).

Figure 5.1: An impression of the various network intersections evident amongst migrant communities.

Figure 5.2: A diagram indicating the differences between the conventional approach to community building and that of network associations.

Figure 5.2: Initial explorations of building as a network.

Figure 5.3: Results of a demographic survey conducted amongst migrants, asylum seekers and refugees in 2012 (Source: Galabova 2012:29 adapted by Author).

Figure 5.4: Map of central Pretoria indicating the social support infrastructure in relation to the proposed site.

Figure 5.5: Flow diagram indicating the extensive bureaucratic processes undertaken by migrants to obtain refugee status in South Africa (Source: Garrett 2012: 31 adapted by Author).

Figure 5.6: A diagram indicating key aspects of a participatory communication model.

Figure 5.7: A diagram highlighting the collaboration between affiliated clients.

Figure 5.8: A flow diagram capturing the intentions of the clients identified.

Figure 5.9 (top): A diagram illustrating the Information Processing Theory model (Source: Shiffrin and Schneider 1977, adapted by Author).

Figure 5.10 (bottom): Maslow's hierarchy of needs (Source: Barraca, 2015, adapted by Author). <http://www.liveitloveitblogit.com/wp-content/uploads/2012/04/Maslow.png>

Figure 5.11: The conversion of information into knowledge through the various programmatic elements.

Figure 5.12: A diagram of the programme accommodation network.

Figure 6.1: Photograph: Montecasino Hotel & Casino, Johannesburg, South Africa exemplifies the qualities of simulation and mimicry. (Source: <https://d2qk001qea2413.cloudfront.net/681981528/cms/cache/1680x942/41/3736-41a8a97521d531b61e44c74ff4123ddc.jpg>)

Figure 6.2: The combination of symbols of stature results in layers of falsehood.

Figure 6.3: Urban migrant as *Flâneur*. (Source: Gavarni, 1842 viewed 05 May 2016 from <https://en.wikipedia.org/wiki/Fl%C3%A2neur#/media/File:Rosler-LeFlaneur.jpg>, adapted by Author).

Figure 6.4: A diagram of the dialectical relationship between nature and culture. (Source: Buck-Morss, 1989, adapted by Author).

Figure 6.5: Architectural examples of fossil, fetish, wish image and ruin (Sources: top left: <http://www.africalist.directory/wp-content/uploads/2016/07/2.jpg>,

top right: Author, 2015, bottom right: http://www.archidatum.com/media/7208/fnb-westbank-building-_mma-mds-cnn-fairbairn-architects-02.jpg, bottom left: http://images.adsttc.com/media/images/5452/db24/e58e/ce64/0100/0105/large_jpg/52852152e8e44e8e7200015f_heydar-aliyev-center-zaha-hadid-architects_hac_exterior_photo_by_hufton_crow_-1-.jpg?1414716185, adapted by Author).

Figure 6.4: The constituent elements of the architectural commodity.

Figure 6.5: Diagram summarising the resultant analysis of fetish, fossil, wish image and ruin according to form, context and programme.

Figure 6.6: Diagram indicating the dialectical relationship between the Dreaming State and Petrified Nature, resulting in the condition of fetishism.

Figure 6.7: Diagram indicating the dialectical relationship between the Waking State and Petrified Nature, resulting in the condition of fossilisation.

Figure 6.8: Diagram indicating the dialectical relationship between the Dreaming State and Transitory Nature, resulting in the condition of wish images.

Figure 6.9: Diagram indicating the dialectical relationship between the Waking State and Transitory Nature, resulting in the condition of ruination.

Figure 6.10: Diagram of the theoretical approach developed towards intervening with heritage architecture.

Figure 6.11: Diagram depicting the montage of distillation, unearthing, lamination and subversion.

Figure 7.1: Exploded architectural drawing by Viollet-le-Duc in his *Dictionnaire raisonné* around 1870 (Source: Barry Bergdoll, ed., 1990, Eugène-Emmanuel Viollet-le-Duc. The foundations of architecture. Selections from the Dictionnaire raisonné, New York viewed online 7 June 2016 from <http://www.riha-journal.org/articles/2013/galleries-2013/images-falser-riha-journal-0071/fig7>)

Figure 7.2: Scale model of Chicoco Media Centre (Source: CMAP, n.d., adapted by Author) http://cmapping.net.s3.amazonaws.com/2015/08/BP-CS-article-slide-Vitra_Model_02.jpg.

Figure 7.3: Montage indicating spatial and material character of the Chicoco Media Centre (Source: NLÉ Works, n.d., adapted by Author).

Figure 7.4 (top): Diagram of the programme specific spaces and areas of the Chicoco Media Centre (Source: NLÉ Works, n.d., adapted by Author).

Figure 7.5 (bottom): Diagram indicating the spatial arrangement in relation to water and land, public and private, and open and enclosed gradients. (Source: NLÉ Works, n.d., adapted by Author).

Figure 7.6: Central courtyard of Palencia Civic Centre (Source: Dezeen, n.d., adapted by Author). http://static.dezeen.com/uploads/2012/04/Dezeen_Civic-Centre-in-Palencia-by-Exit-Architects_2.jpg.

Figure 7.7: Photographic montage indicating the contrast between the old insular building and the new translucent elements of the Palencia Civic Centre (Source: Dezeen, n.d., adapted by Author). http://static.dezeen.com/uploads/2012/04/Dezeen_Civic-Centre-in-Palencia-by-Exit-Architects_2.jpg.

Figure 7.8: Diagrammatic floor plans indicating the unifying nature of the new interventions at the Palencia Civic Centre (Source: Dezeen, n.d., adapted by Author). http://static.dezeen.com/uploads/2012/04/Dezeen_Civic-Centre-in-Palencia-by-Exit-Architects_2.jpg.

Figure 7.9: View of public plaza created by the cantilevering structure above (Source: Mi Modern Architecture, n.d., adapted by Author). https://www.mimoo.eu/images/827_1.jpg

Figure 7.10: Photographic montage of the Peckham Library indicating the legibility of important and less important spaces experienced both internally and externally (Source: aLL Design, n.d., adapted by Author). <http://www.all-worldwide.com/media/22542/0532-041-l-m.jpg>.

Figure 7.11: Diagrammatic drawings of the Peckham Library indicating the arrangement of spaces and the devices used to articulate them (Source: www.building.co.uk, n.d., adapted by Author). <http://www.building.co.uk/Journals/Graphic/m/o/u/diag1.jpg>

Figure 7.12: View of Southern courtyard and pergola structure indicating the honesty and simplicity of materials expressed through detail connections (Source: DOOK Photography, n.d., adapted by Author). http://images.adsttc.com/media/images/578d/8345/e58e/ce05/ed00/0058/large_jpg/I-Cat__AfriSam_Dook_24.jpg?1468891937

Figure 7.13: Photographic montage of the I•Cat Offices and Warehouse shows the celebrated connections between differing materials (Source: DOOK Photography, n.d., adapted by Author). http://images.adsttc.com/media/images/578d/84ec/e58e/cee5/5c00/00de/large_jpg/I-Cat_AfriSam_Photo_8.jpg?1468892381

Figure 8.1: Initial diagrammatic exploration of design scheme.

Figure 8.2 (left): Diagram indicating the mixing of smooth and striated spaces.

Figure 8.3 (right): The aggregation of smooth and striated spaces from suspension to gel represented in diagrammatic form.

Figure 8.4 (left): Photograph of conceptual maquette, indicating the a preliminary investigation into the formal qualities of smooth and striated space.

Figure 8.5 (right): Diagrammatic representation of the occurrence of smooth and striated space associated with elements of shelter.

Figure 8.6: Diagrammatic exploration of the second conceptual approach.

Figure 8.7: Photograph of the second conceptual maquette indicating the possible spatiality.

Figure 8.8: Photograph of the second conceptual maquette indicating the possible spatiality.

Figure 8.9: Diagrams indicating the possible spatial organisations related to ordering the building according to the various phases of migration.

Figure 8.10: Photograph of maquette exploring the phases of migration.

Figure 8.11: A series of sketches showing the development of design iteration.

Figure 8.12 (top): Birds-eye view of initial three dimensional exploration of the design scheme.

Figure 8.13: Ground floor sketch plan of initial design response, May 2016 (not to scale).

Figure 8.14: First floor sketch plan of initial design response, May 2016 (not to scale).

Figure 8.15: Sectional investigation into the building facade providing shelter.

Figure 8.16: Development drawing of ground floor plan.

Figure 8.17 (top): Ground floor sketch plan of design investigation, June 2016.

Figure 8.18 (bottom): Sectional view of design investigation, June 2016.

Figure 8.19 (top): First floor and Archive level sketch plan of design investigation, June 2016.

Figure 8.20 (bottom): Sectional view of design investigation, June 2016.

Figure 8.21 (top): Perspective view of design investigation, June 2016.

Figure 8.22 (bottom): Refined section indicating early tectonic resolution design scheme, June 2016.

Figure 8.23 (top): Perspective view of design investigation, June 2016.

Figure 8.24: Early sectional diagram of the third design iteration.

Figure 8.25: Diagrammatic plan development indicating a better response to the site.

Figure 8.26 (top): Early sketch plan development of the third design iteration.

Figure 8.27 (bottom): Investigation of preliminary roof structure.

Figure 8.28: Perspective drawing of the multi-directional roof and its limiting support columns.

Figure 8.29 (left): Three dimensional drawings investigating the single-span roof structure.

Figure 8.30 (right): Sectional development of the single-span roof structure.

Figure 8.31: Ground floor plan drawing indicating refinement of the fourth design iteration (not to scale).

Figure 9.1: Photograph of the lean-to roof typology that defines the edges of Boom Street in Marabastad (Source: Mentz 2015).

Figure 9.2: Diagrammatic illustration of the tectonic concept indicating the intersections of difference.

Figure 9.3: Sectional investigation of structural system (not to scale).

Figure 9.4: Schematic indication of interstitial zones generated by the structural column grid.

Figure 9.5: Isometric view of structural exploration.

Figure 9.6: Palette of materials used within the scheme indicating their position on a scale of absoluteness.

Figure 9.7: Schematic cross section indicating the airflow as a result of the stack effect.

Figure 9.8 (top): Diagram indicating the heat exchange process of a ground source heat pump (Source: Energy Design Resources 2010).

Figure 9.9 (bottom): Pie chart of the potential energy yield obtained from using on-site biodigesters.

Figure 9.10: Results from an analysis on the building using the Sustainable Building Assessment Tool.

Figure 9.11: Ground floor plan layout of the Vulnerable Asylum (not to scale).

Figure 9.12: Detailed perimeter section of Eastern facade.

Figure 9.13 (top): A series of details investigating the tectonic concept of intersections of difference (not to scale).

Figure 9.14 (bottom): A typical cross-section of the main information centre space.

Figure 10.1: A series of photographs of the final site model and review presentation.

Figure 10.2: Ground floor plan of the Knowledge and Information Centre (not to scale).

Figure 10.3: First floor plan of the Knowledge and Information Centre (not to scale).

Figure 10.4: Perspective drawing of the collaborative market space.

Figure 10.5: Perspective view of the main entrance.

Figure 10.6: View of the multipurpose hall.

Figure 10.7: Perspective impression of the Southern staff entrance.

Figure 10.8: Perspective drawing of the private courtyard space.

Figure 10.9: Main cross section through the Information Centre.

Figure 10.10: Detail drawing of the intermediary floor intersection (not to scale).

Figure 10.11: Detail indicating the ground intersection (not to scale).

Figure 10.12: Detail drawing of the roof intersection (not to scale).

