

Culex (Culex) univittatus

From Portugal and South Africa, Gauteng Province.

Dissected genitalia microscope photos.

Port-2.1/C6R; Gonocoxite, X100

-



Port-2.1/C6R; Phallosome, X200

-



Port-2.1/C6R; Phallosome, X200

- (remounted)



Port-2.2/C7; Gonocoxite, X100

-



Port-2.2/C7; Phallosome, X200

-



Port-2.2/C7; Phallosome, X200

- (remounted)



Port-2448.1/C1; Gonocoxite, X200

-



Port-2448.1/C1; Phallosome, X200

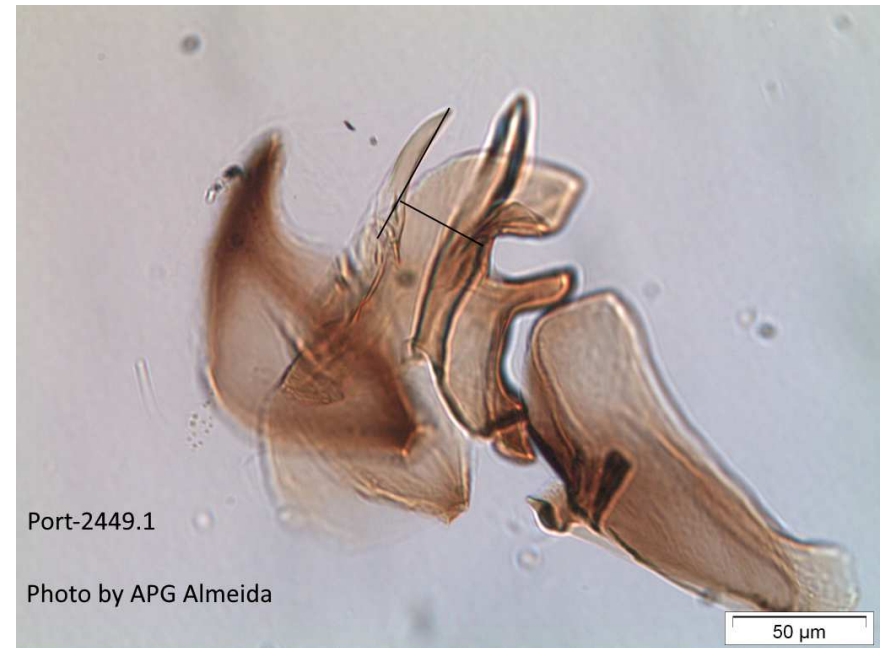


Port-2449.1; Gonocoxite, X100

-



Port-2449.1; Phallosome, X200



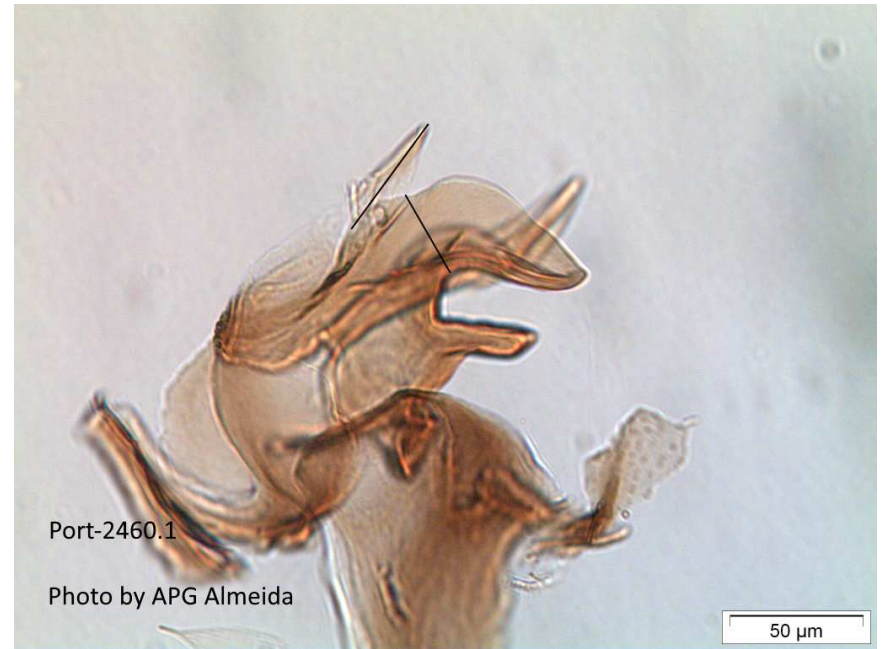
Port-2460.1; Gonocoxite, X100

-



Port-2460.1; Phallosome, X200

•



Port-2465.1/C4; Gonocoxite, X100

-



Port-2465.1/C4; Phallosome, X200

-



Port-2474.2; Gonocoxite, X100

- a marcação na foto está errada, é 2

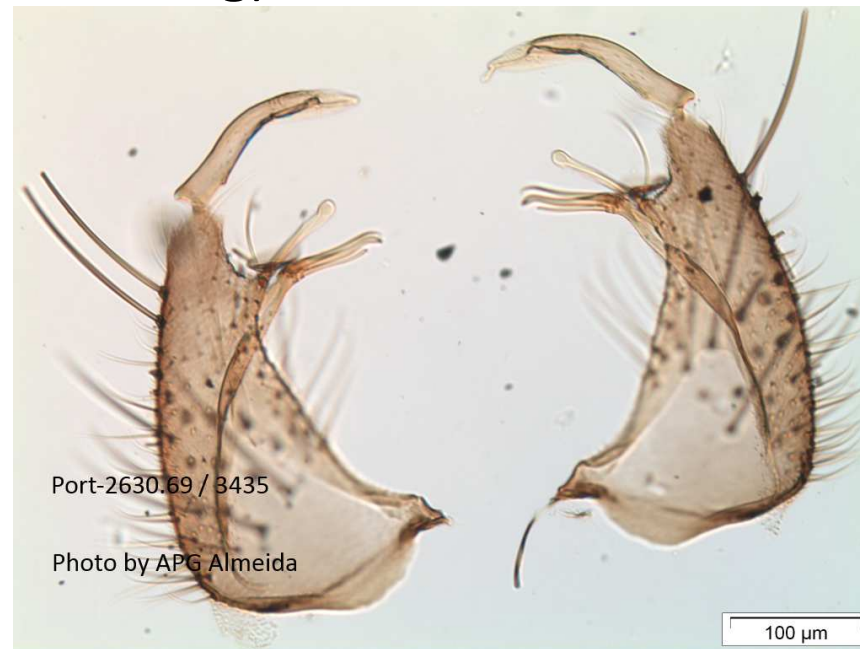


Port-2474.2; Phallosome, X200



Port-2630.69/3435; Gonocoxite, X100

- (first and second mounting)



Port-2630.69/3435; Phallosome, X200

-



Port-2630.69/3435; Phallosome, X200

- (remounted)



Port-3437; Gonocoxite, X200

-



Port-3437; Phallosome, X200



Port-3438; Gonocoxite, X100

-



Port-3438; Phallosome, X200



Port-3439; Gonocoxite, X100

•



Port-3439; Phallosome, X200

-



SAfr-GAU86E1/GAU3; Gonocoxite, X100

-



SAfr-GAU86E1/GAU3; Phallosome, X200

-



SAfr-GAU86E1/GAU3; Phalosome, X200

- (remounted)



SAfr-GAU86E2/GAU4; Gonocoxite, X100

- 1st mounting



- 2nd mounting



SAfr-GAU86E2/GAU4; Phallosome, X200

•



SAfr-GAU86E2/GAU4; Phallosome, X200

- (remounted)



SAfr-GAU109K/GAU9; Phallosome, X200

- (Gonocoxite has been lost)



SAfr-GAU109K/GAU9; Phallosome, X200

- (remounted)



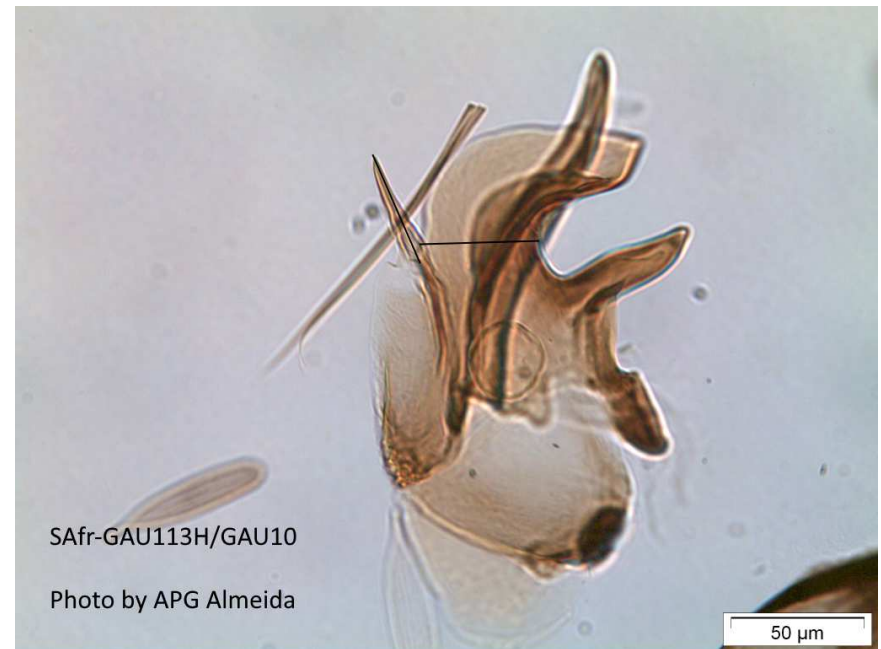
SAfr-GAU113H/GAU10; Gonocoxite, X100

•



SAfr-GAU113H/GAU10; Phallosome, X200

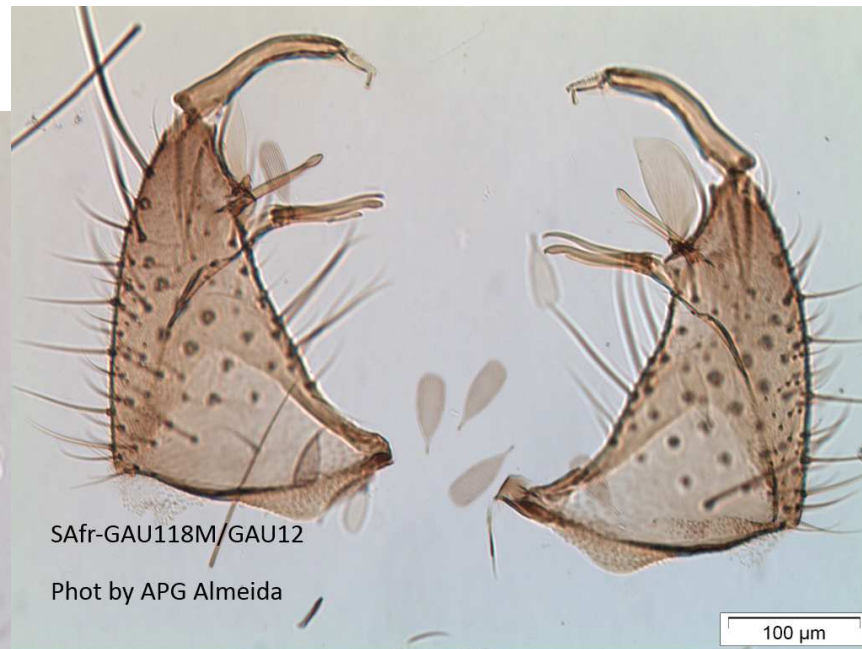
•



SAfr-GAU118M/GAU12; Gonocoxite, X100

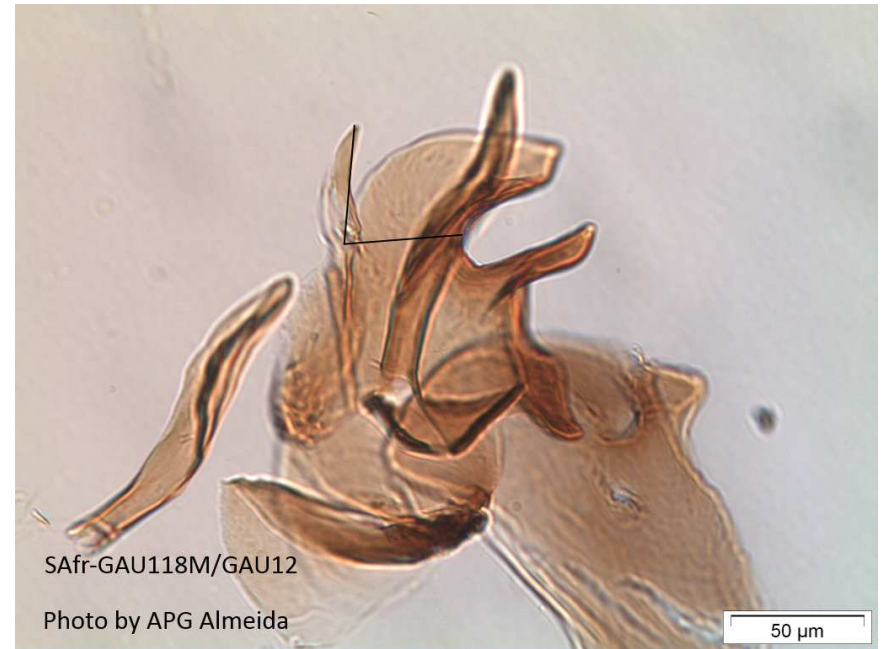
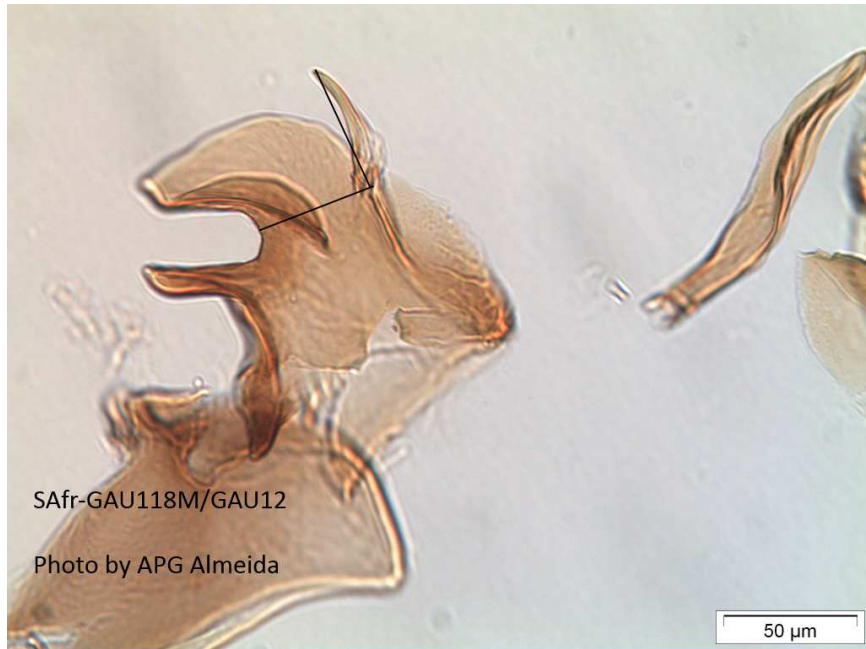
•

(X200)



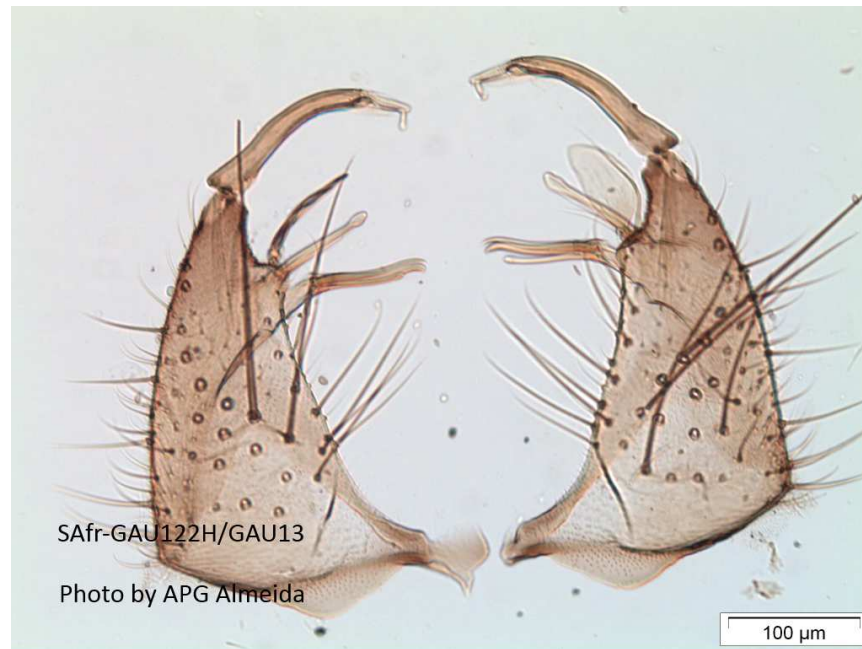
SAfr-GAU118M/GAU12; Phallosome, X200

•



SAfr-GAU122H/GAU13; Gonocoxite, X100

•



SAfr-GAU122H/GAU13; Phallosome, X200

•



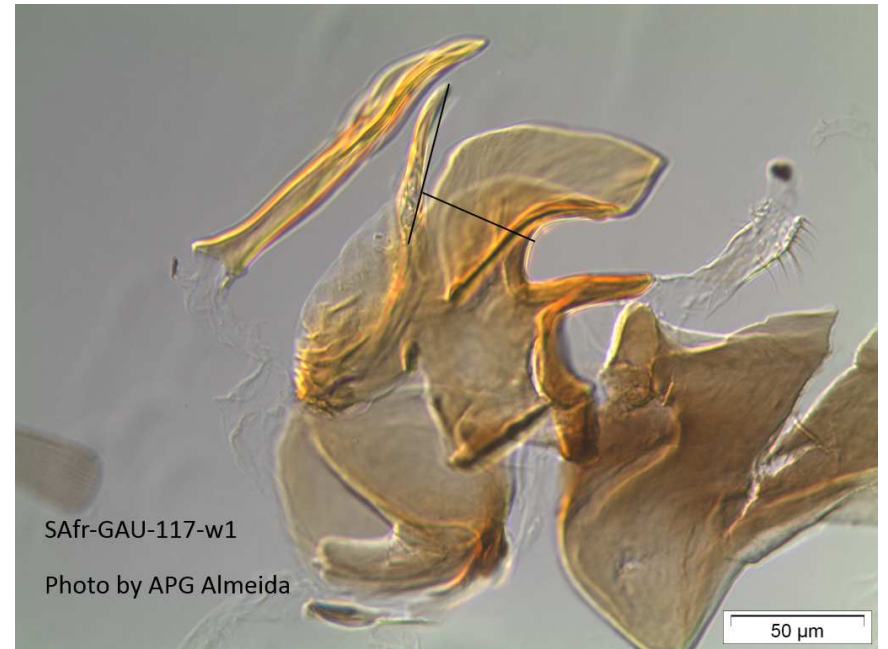
SAfr-GAU-117w1; Gonocoxite, X100

•



SAfr-GAU117w1; Phallosome, X200

•



SAfr-GAU-117w2; Gonocoxite, X100

-



SAfr-GAU-117w2; Phallosome, X200

•



SAfr-GAU-117w3; Gonocoxite, X100

•



SAfr-GAU-117w3; Phallosome, X200

•



SAfr-MAR-218i; Gonocoxite, X100

•



SAfr-MAR-218i; Phallosome, X200

•



SAfr-MAR-264k; Gonocoxite, X100

•



SAfr-MAR-264k; Phalosome, X200

•

