

CHAPTER

08

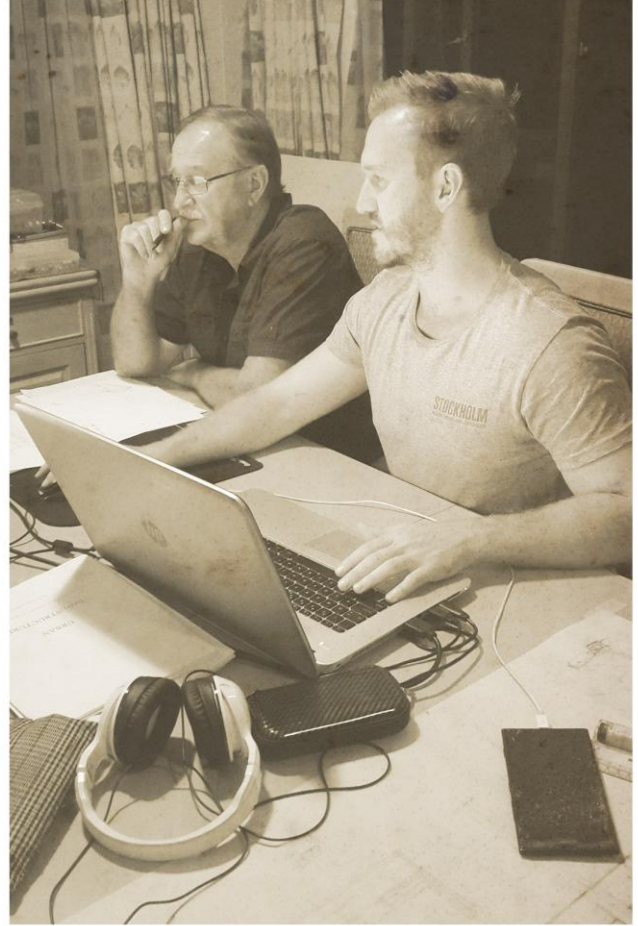
[appendix]

urban decay as a result of neglected infrastructure

The chapter contains a photographic record of the final happenings of the MArch(PROF) year.

THE PROCESS

- *photographic record of extensive working hours* -



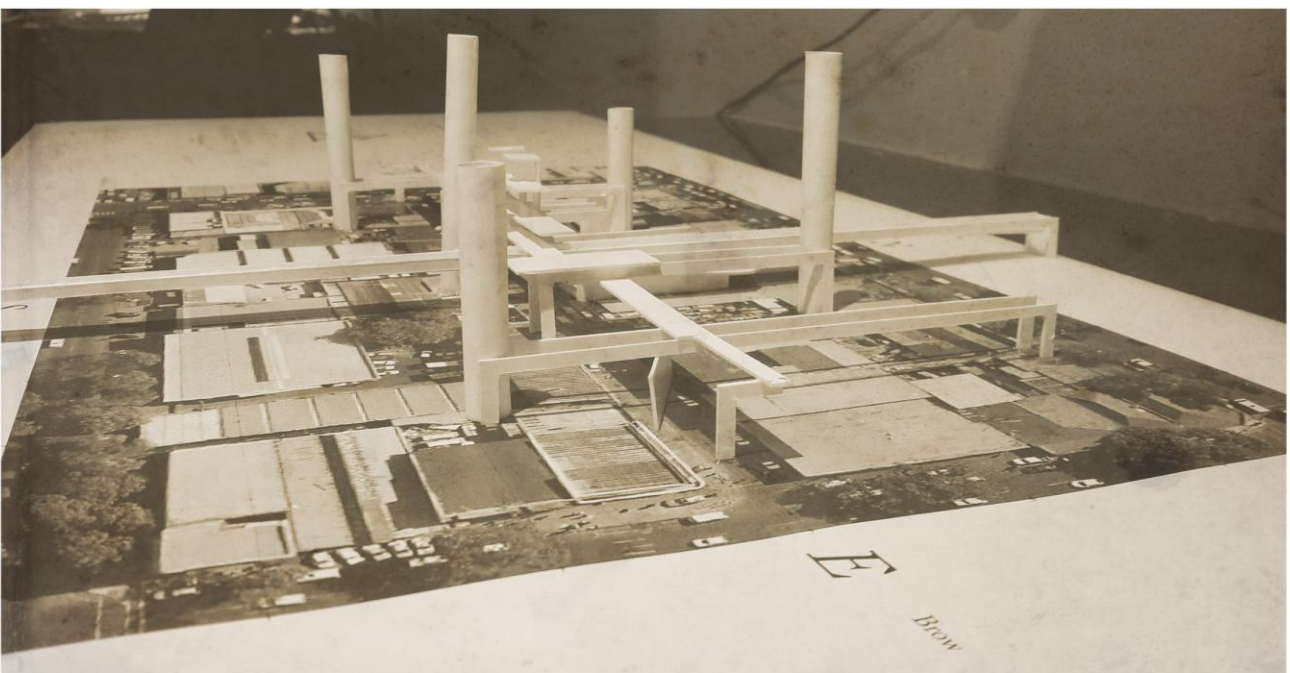
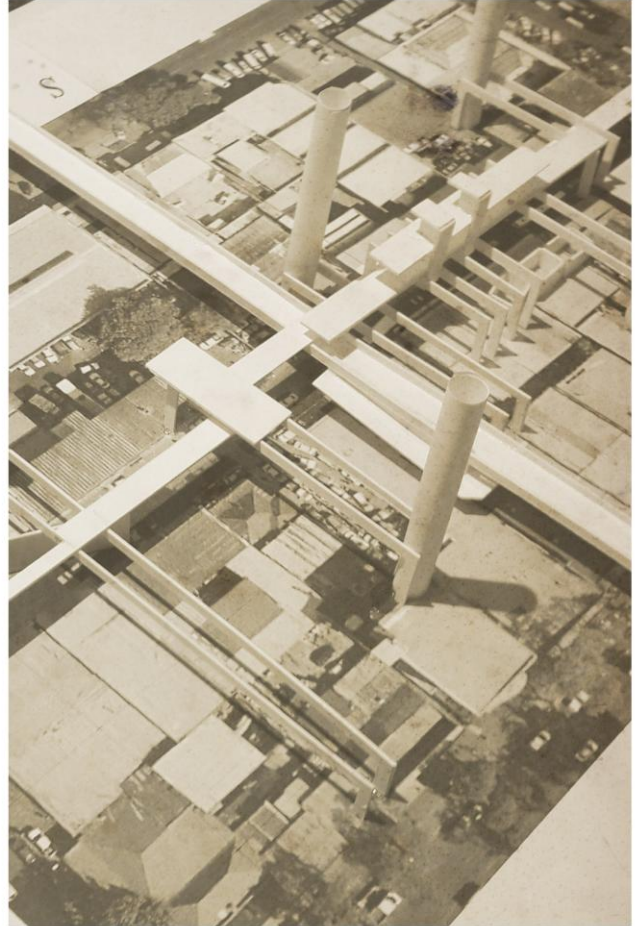
THE HELP

- photographs of the "pre-crit" A TEAM -



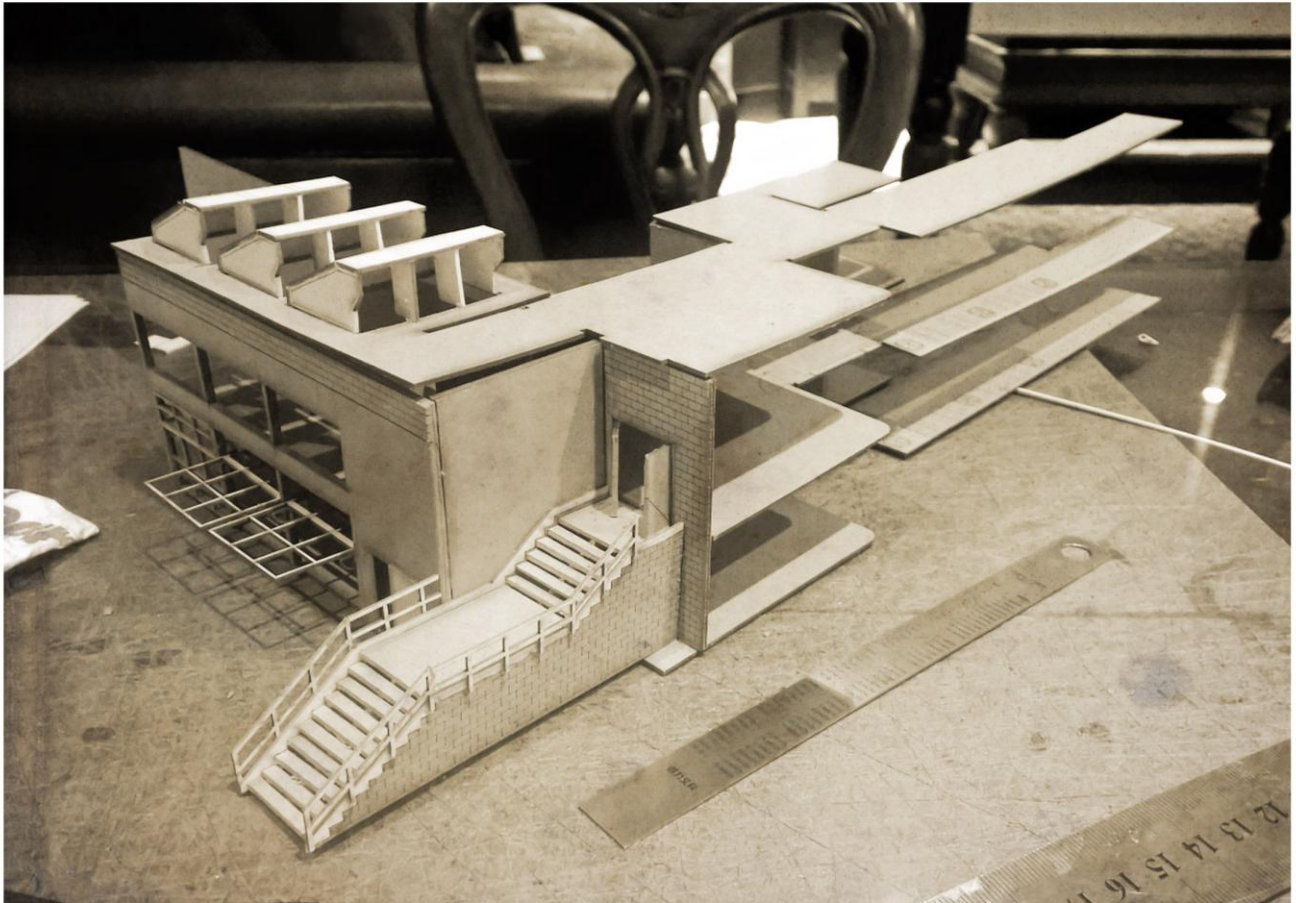
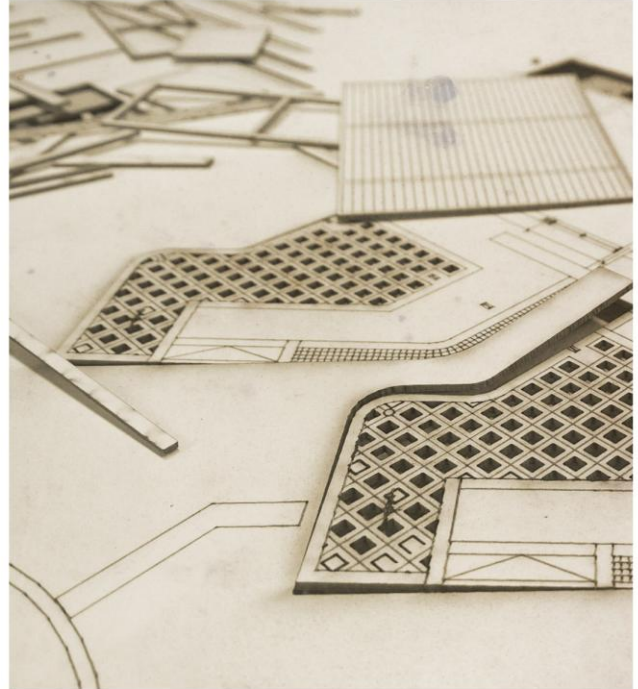
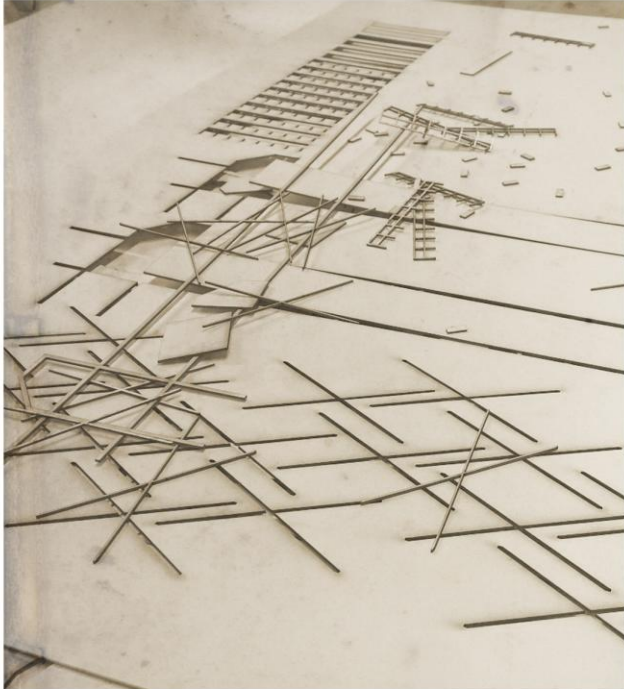
THE SERVICE CORE

- concept model within the context of Brown Street -



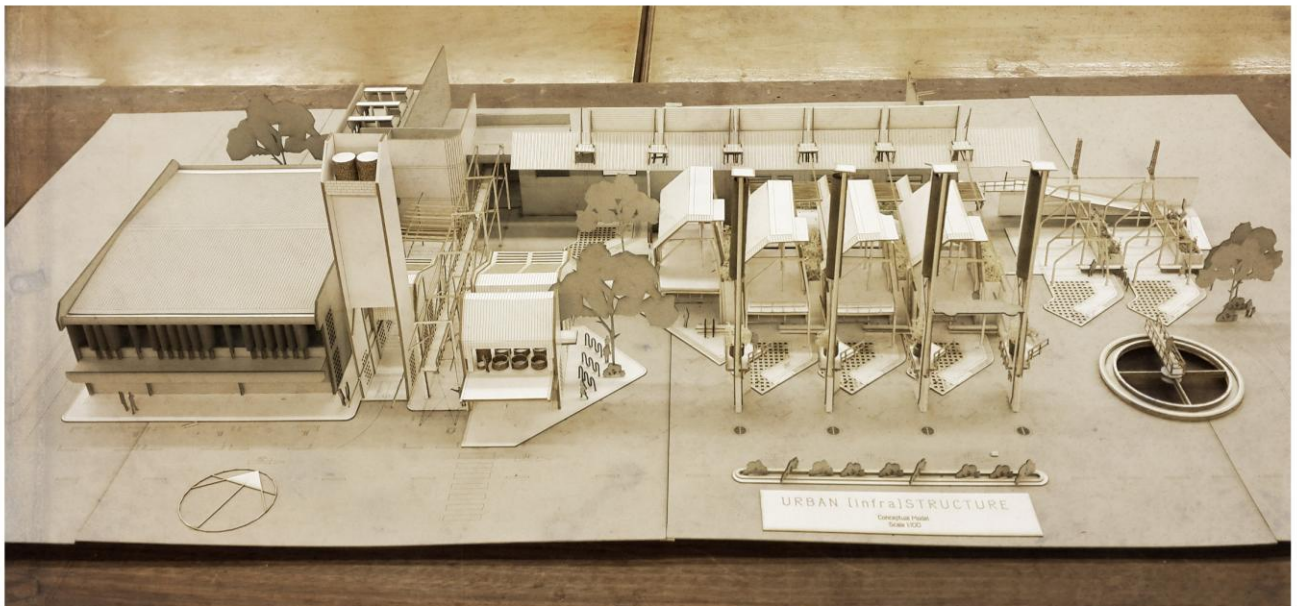
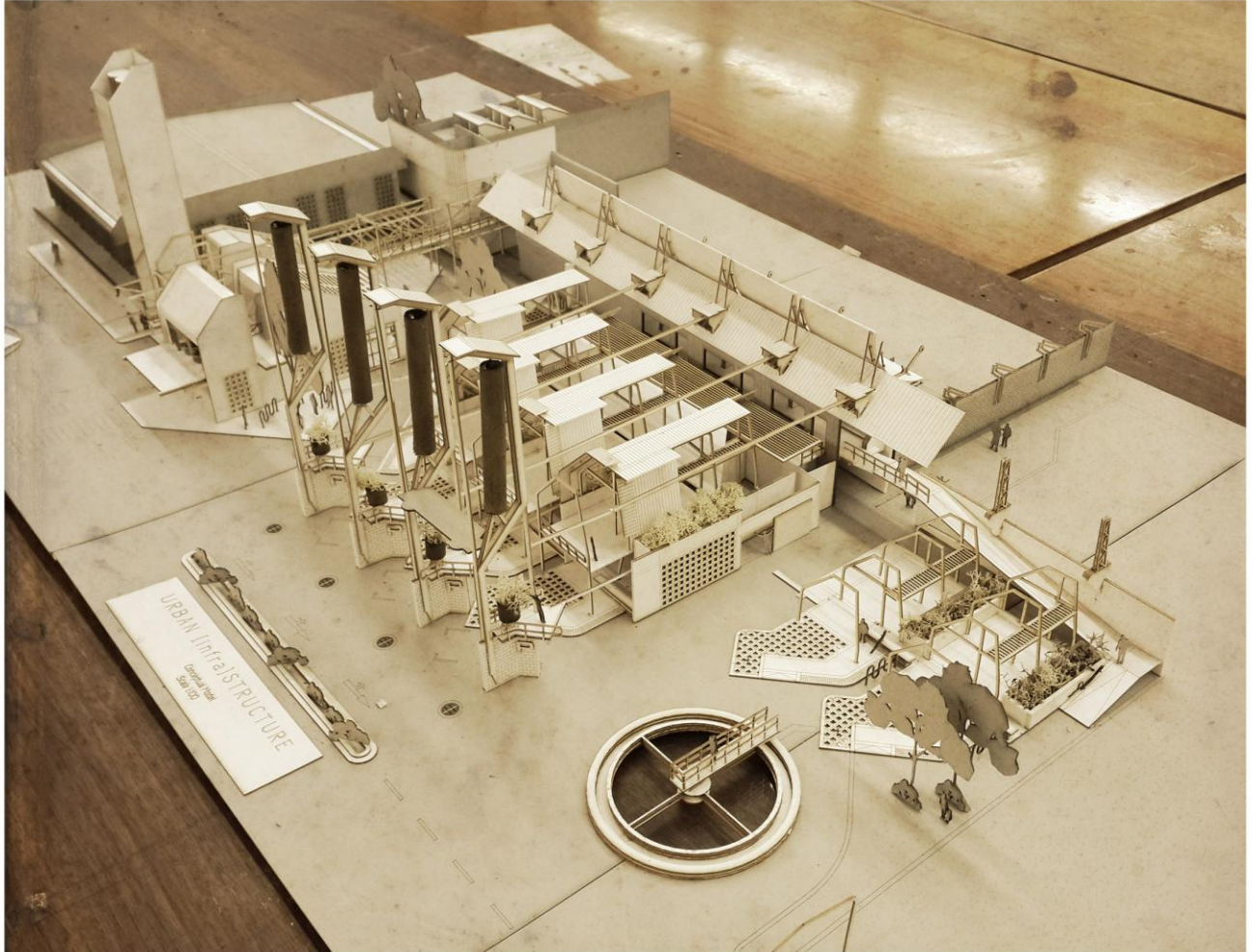
THE PIECES

- photographs of lazer cut model pieces -



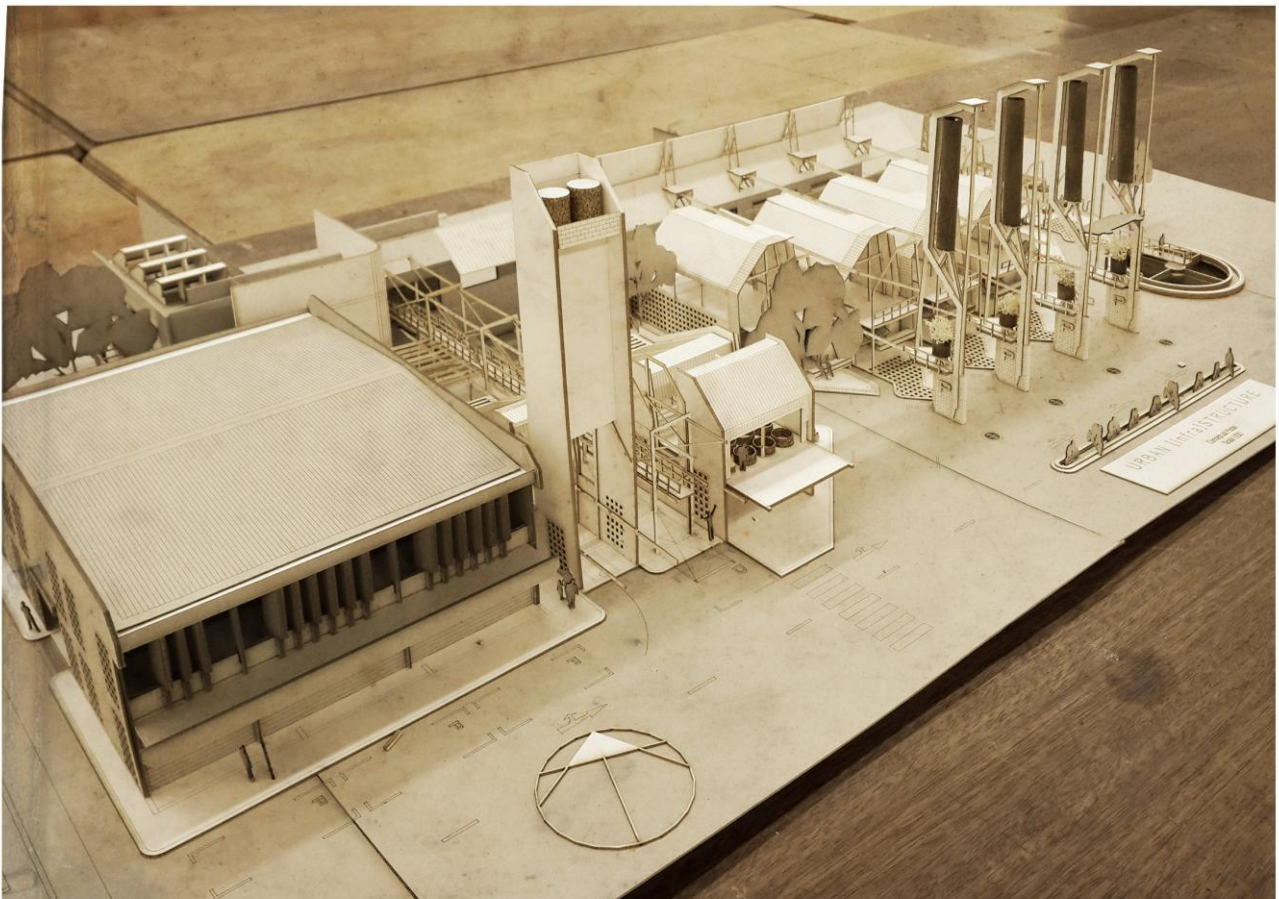
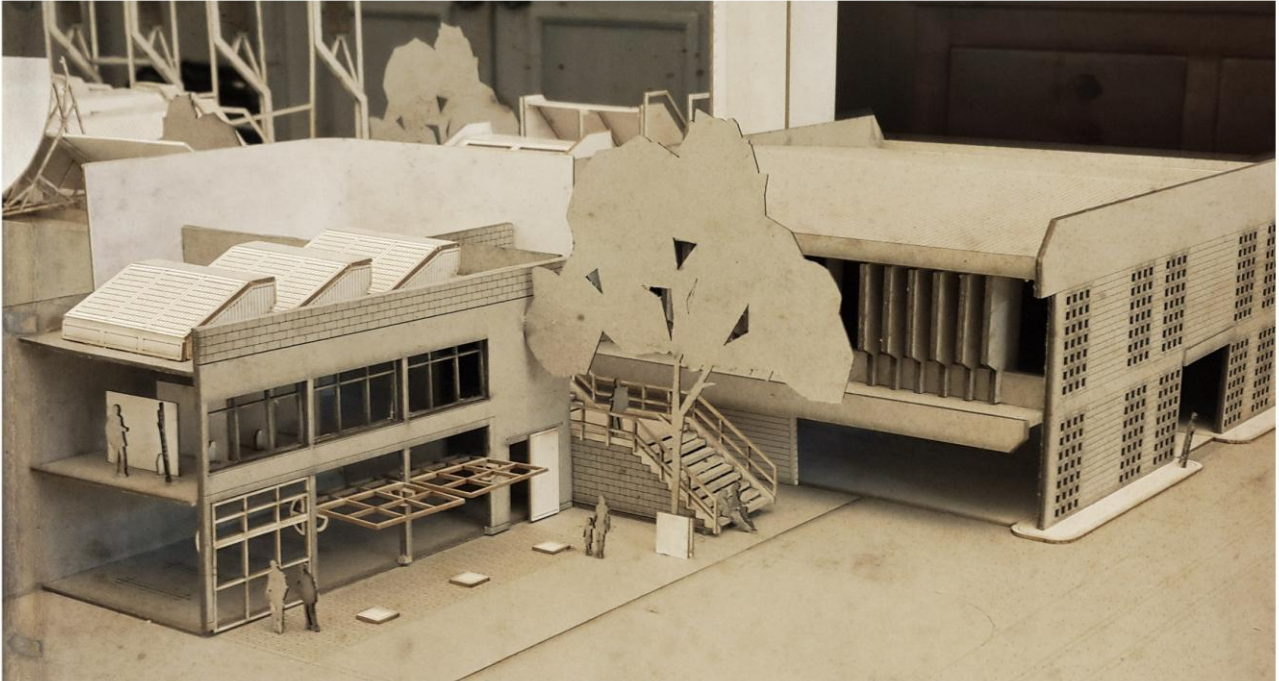
FINAL MODEL

- final model on Urban [infra]Structure -



FINAL MODEL

- final model on Urban [infra]Structure -



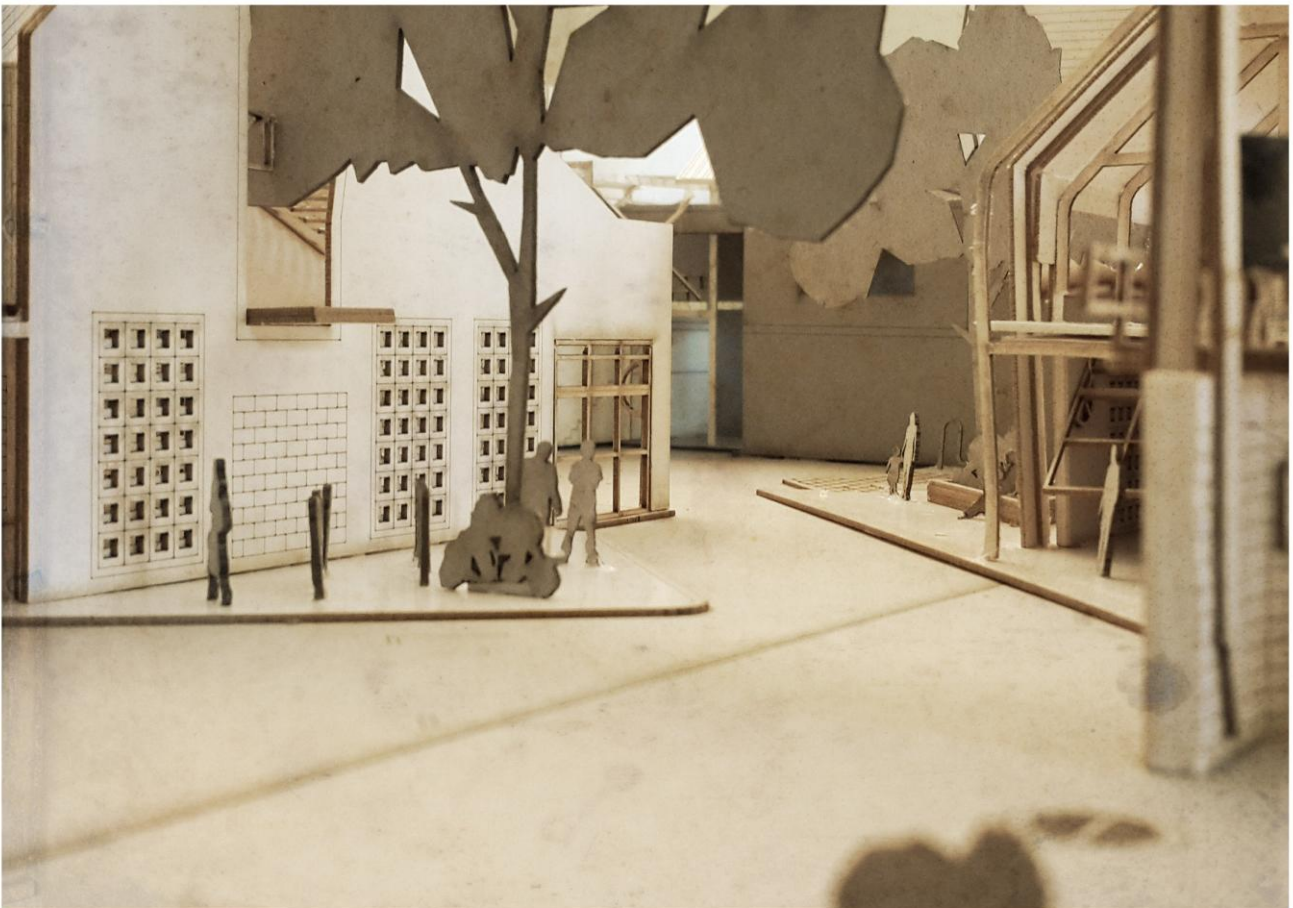
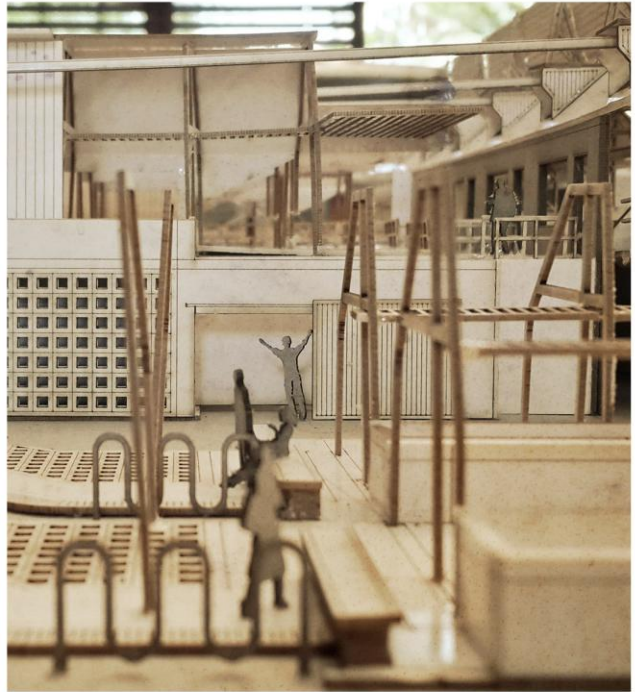
FINAL MODEL

- *micro perspectives of Urban [infra]Structure model* -



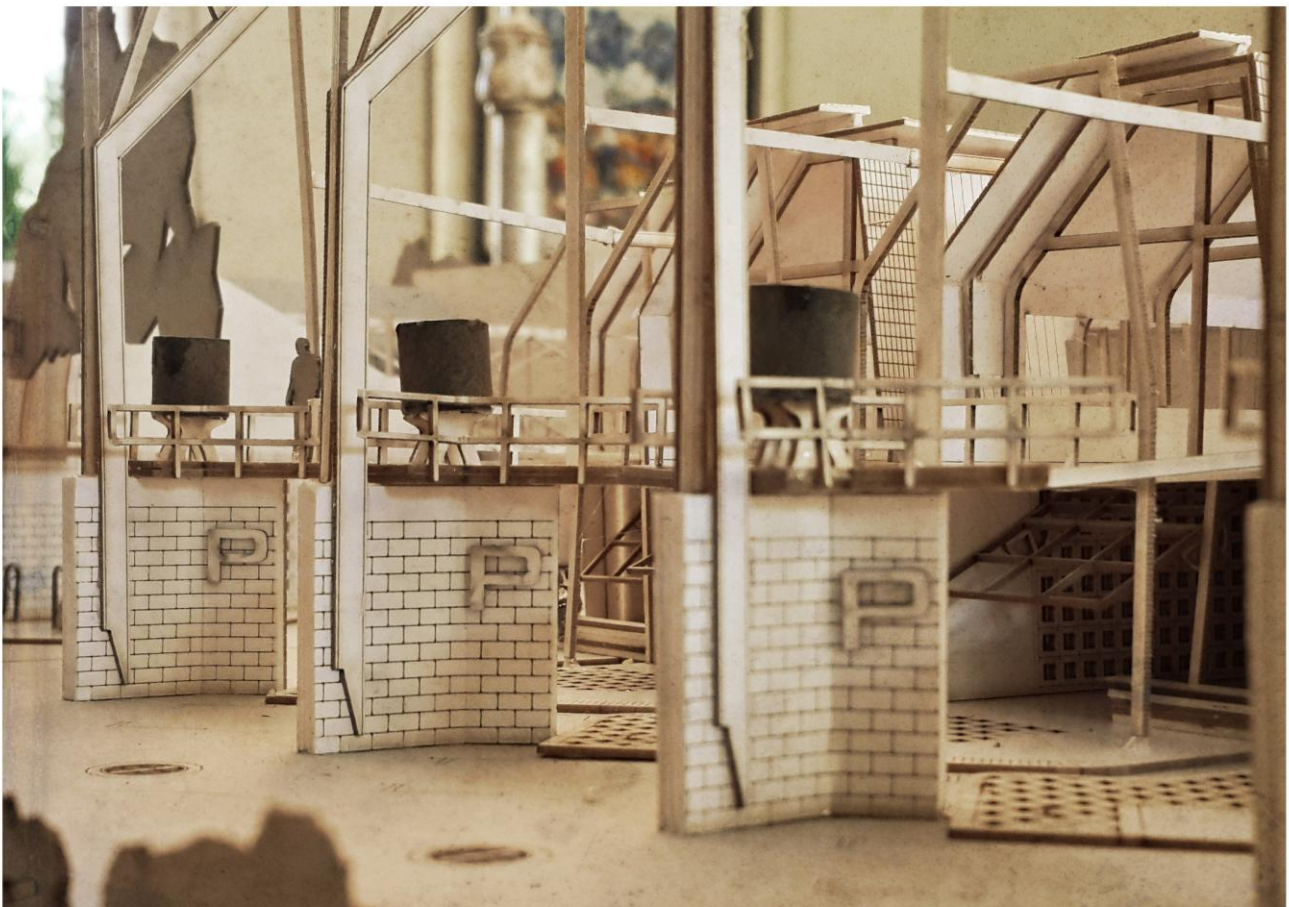
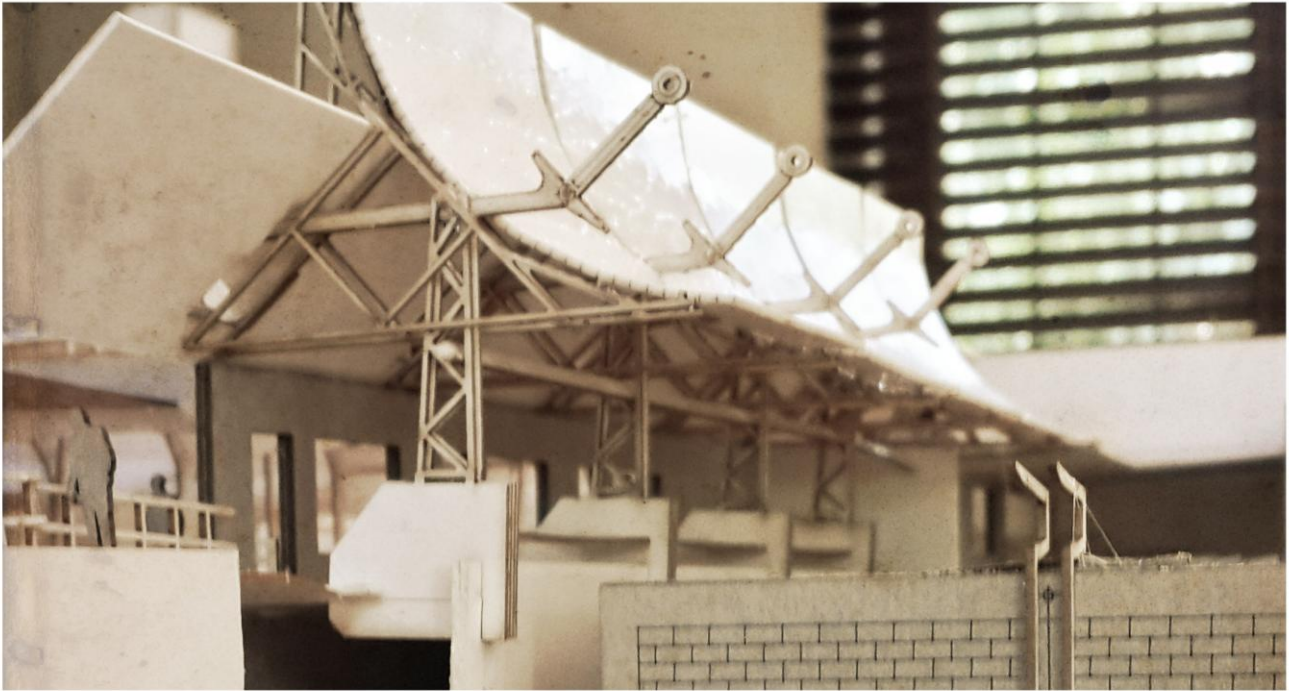
FINAL MODEL

- *micro perspectives of Urban [infra]Structure* -



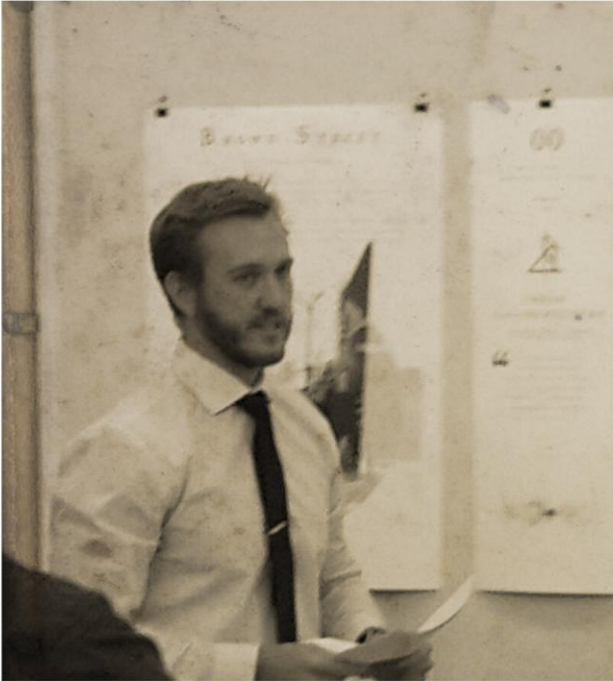
FINAL MODEL

- *micro perspectives of Urban [infra]Structure* -



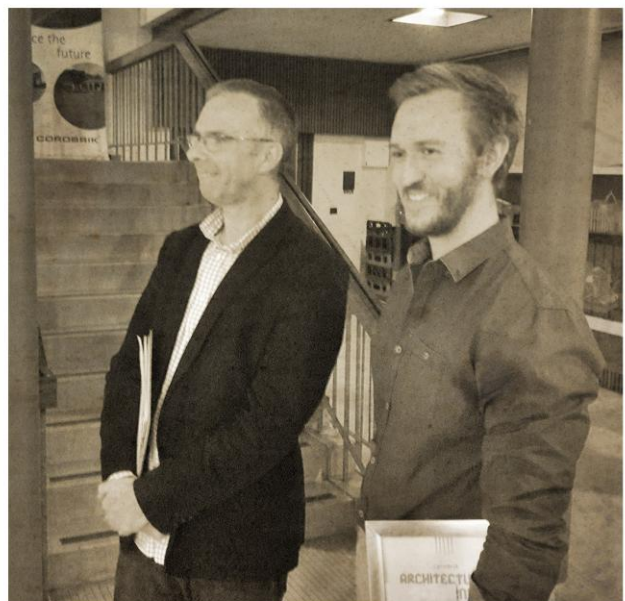
THE CRIT

- photographs of final crit November 2015 -



COROBRIK

- end of year exhibition and awards of M(Prof) final projects -



LIST OF FIGURES

Chapter 00

Figure 0.1 : Conceptual diagram of the project strategy in terms of past, present and future. (Author, 2015).

Figure 0.2 : Exaggeration of degenerative state of Brown Street (Author, 2015).

Chapter 01

Figure 1.1 : drawn section of the roman Aqua Appia. Illustrating spatiality of water infrastructure (reference, 2012)

Figure 1.2 : Diagram of the three primary city infrastructures and their various components (Author, 2015).

Figure 1.3 : Plan of Pretoria's storm water network and manhole access points. 1889 (Kruger Museum, 2012).

Chapter 02

Figure 2.1 : 5m contours showing Re Kgabisa Framework within the Apies river valley (GIS, 2015).

Figure 2.2 : City of Tshwane: Fast Facts about our City (City of Tshwane, 2013 : 42).

Figure 2.3 : parti diagram illustrating decentralization from the Pretoria CBD (Author, 2015).

Figure 2.4 : Diagram of the three primary city infrastructures and their various components (Author, 2015).

Figure 2.5 : parti diagram illustrating centralization from the Pretoria CBD (Author, 2015).

Figure 2.6 : parti diagram illustrating North-Eastern periphery from the Pretoria CBD (Author, 2015).

Figure 2.7 : Spatial structure of the Central Business District as per the Re Kgabisa Framework (City of Tshwane, 2013 edited by Author, 2015).

Figure 2.8 : North Eastern periphery condition in relation to Re Kgabisa framework (Author, 2015).

Figure 2.9 : Diagram components of Re Kgabisa inner-city Framework (Author, 2015).

Figure 2.10 : Diagram components of Re Kgabisa inner-city Framework (Author, 2015).

Figure 2.11 : Diagram of the three primary city infrastructures and their various components (Author, 2015).

Figure 2.12 : Illustration of Pretoria's storm water network and manhole access points. Based on 1889 plan (Author, 2015).

Figure 2.13 : Illustration of Pretoria's green network in relation to storm water channels. (Author, 2015).

Figure 2.14 : Illustration of Civic Precinct public space network in relation to green network (Author, 2015).

Figure 2.15 : Illustration of urban vision in relation to the in between spaces of Brown Street in red. (Author, 2015).

Figure 2.16 : layered illustration of urban vision (Author, 2015).

Figure 2.17 : layered illustration of urban vision (Author, 2015).

Figure 2.18 : Zoning analysis. Not to Scale (Author, 2015).

Figure 2.19 : Site Line Analysis (Author, 2015).

Figure 2.20 : Corridor development (Author, 2015).

Figure 2.21 : Transportation structure (Author, 2015).

Figure 2.22 : Density and fabric analysis (Author, 2015).

Figure 2.23 : Circulation analysis (Author, 2015).

Figure 2.24 : Hydrology analysis (Author, 2015).

Figure 2.25 : Design potential (Author, 2015).

Figure 2.26 : Design potential (Author, 2015).

Chapter 03

Figure 3.1 : Photographic illustrations of decay in architecture (Author, 2015).

Figure 3.2 : photograph of "in-between" SPACES of Brown Street. Informal Scrap Industry (Author, 2015).

Figure 3.3 : Current model of resource and material treatment (Littman, 2009: 3).

Figure 3.4 : Model of regenerative urban system (Littman, 2009: 3).

Figure 3.5 : Skeleton Forms: Map of infrastructure projects in nineteenth-century London overlaid on top of *Fortifications of London City* (Carrelo-Mendez, 2009: 3).

Chapter 04

Figure 4.1 : Cedric Price's parti diagrams of 10 'magnets' (Price, 1996)

Figure 4.2 : Cedric Price's parti diagrams of 10 'magnets' (Price, 1996)

Figure 4.3 : Diagram Series of folly types by Tshumi (Achdaily.com)

Figure 5.4 : Plan Diagram of Community Green Station (Achdaily.com)

Figure 4.5 : Isometric Diagram of Community Green Station (Achdaily.com)

Figure 4.6 : Photograph of Centre Pompidou (Achdaily.com)

Chapter 05

Figure 5.1 : Diagram illustrating components program of [infra]structure (Author, 2015).

Figure 5.2 : Photographs of an original Living Machine system (Todd, 2015).

Figure 5.3 : Photographs of an original Living Machine system components (Author, 2015).

Figure 5.4 : Diagram illustrating components of the Living Machine as baseline for design iteration (Author, 2015).

Figure 5.5 : Diagram illustrating components of the Living Machine as incorporated into an early design iteration (Author, 2015).

Chapter 06

Figure 6.1 : Diagram illustrating the process of the design concept (Author, 2015).

Figure 6.2 : Diagram illustrating the insertion of infrastructure (Author, 2015).

Figure 6.3 : Diagram illustrating the insertion of infrastructure (Author, 2015).

Figure 6.4 : Diagram illustrating the insertion of infrastructure (Author, 2015).

Figure 6.5 : Diagram illustrating the insertion of infrastructure (Author, 2015).

Figure 6.6 : Diagram illustrating the contextualizing of infrastructure (Author, 2015).

Figure 6.7 : Diagram illustrating the feeding off of Brown Street fabric (Author, 2015).

Chapter 07

Figure 7.1 : Street View showing the stereotomic character of existing fabric within the block of Brown Street (Google Street View, 2015).

Figure 7.2 : Drawing illustration of Gottfried Semper's Four Elements of Architecture (Semper, 1851).

Figure 7.3 : Photo illustration of entropy in architecture (Author, 2015).

Figure 7.4 : Illustration of entropy in proposed materiality of the Urban [infra]Structure (Author, 2015).

Figure 7.5 : Sketch plan of final plan layout of Urban [infra]Structure (Author, 2015).

Figure 7.6 : callout of section indicating the selected TECONTIC illustrated in the follow development. (Author, 2015).

Figure 7.7 : TECONTIC development (Author, 2015).

Figure 7.8 : TECONTIC development (Author, 2015).

Figure 7.9: DETAIL B: DETAIL illumination of (STEREOTOMIC) water basin LIGHTING. (Author, 2015).

BIBLIOGRAPHY

Woods, Lebbeus. 'INEVITABLE ARCHITECTURE'. LEBBEUS WOODS. N.p., 2012. Web. 23 Oct. 2015.

Valeska, Abreu. 'Drug Thugs Rule Pretoria CBD - Crime & Courts | IOL News'. Independent Online. N.p., 2015. Web. 23 Oct. 2015.

Woods, Lebbeus. Radical Reconstruction. New York: Princeton Architectural Press, 1997. Print.

Clarke, Nicholas. 'Regenerating Pretoria's Historical Core: Heritage As An Asset For Inner City Development - ICOMOS Open Archive: Eprints On Cultural Heritage'. Openarchive.icomos.org. N.p., 2009. Web. 23 Oct. 2015.

Trabucco, Dario. 'Historical Evolution Of The Service Core'. Architecture/Design 1.1 (2010): 1. Web. 25 Oct. 2015.

Independent Online,. 'Water Crisis Will Rival Power Crunch - IOL | Pretoria News'. N.p., 2015. Web. 26 Oct. 2015.

Geist, J.F. 'Passages'. N.p., 2015. Web. 26 Oct. 2015.

Panagos, D C. 'South African Military History Society - Journal - The ZAR Pumping Station At Groenkloof, Pretoria, 1898'. Samilitaryhistory.org. N.p., 2003. Web. 26 Oct. 2015.

Architizer,. 'Central Energy Plant'. N.p., 2015. Web. 26 Oct. 2015.

- PRECEDENT (C.PRICE) : Iqbal Aalam,. 'Cedric Price, Anticipating The Unexpected, Magnets.'. N.p., 2012. Web. 30 Aug. 2015.

- PRECEDENT (COMMUNITY GREEN STATION) : ArchDaily,. 'Community Green Station / Hong Kong Architectural Services Department'. N.p., 2015. Web. 30 Aug. 2015.

Rome.info,. 'Rome.Info > Roman Aqueducts, Most Preserved Aqueducts In Rome'. N.p., 2015. Web. 27 Oct. 2015.

Myeza, Msizi. TSHWANE VISION 2055 Remaking South Africa'S Capital City. 1st ed. Pretoria: Visionary Vanguard Designs, 2013. Web. 21 Aug. 2015.

Oxforddictionaries.com,. 'Matter - Definition Of Matter In English From The Oxford Dictionary'. N.p., 2015. Web. 31 May 2015.

Sacommercialpropnews.co.za., 'Tshwane Municipality Has Bold Vision For Property Development - SA Commercial Property News | South African Commercial Real Estate Marketplace'. N.p., 2015. Web. 22 Aug. 2015.

- PRECEDENT (C.PRICE) : Iqbal Aalam., 'Cedric Price, Anticipating The Unexpected, Magnets.'. N.p., 2012. Web. 30 Aug. 2015.

- PRECEDENT (COMMUNITY GREEN STATION) : ArchDaily., 'Community Green Station / Hong Kong Architectural Services Department'. N.p., 2015. Web. 30 Aug. 2015.

Mhlanga, Denise. 'The State Of Pretoria Cbd Buildings - Property24.Com'. Property24.com. N.p., 2012. Web. 30 May 2015.

Oelofse, Jan. 'Decentralisation In Tshwane Municipality Sees Growth Of Office Nodes - SA Commercial Property News | South African Commercial Real Estate Marketplace'.Sacommercialpropnews.co.za. N.p., 2012. Web. 30 May 2015.

Associates, NM. 'Urban Hub Design Toolkit'. NM & Associates Planners and Designers. N.p., 2013. Web. 27 Oct. 2015.

Krier, Leon. Architecture & Urban Design. Chicester: John Wiley & Sons, 1993. Print.

Littman, Jacob. 'Regenerative Architecture'. ScholarWorks@UMass Amherst 1.1 (2009): 11 - 14. Web. 27 Oct. 2015.

Todd, Johnn. 'Living Machines'. N.p., 2002. Web. 27 Oct. 2015.

Delalex, Gilles. Go With The Flow: Architecture, Infrastructure And The Everyday Experience Of Mobility. University of Art and Design Helsink, 2006. Print.

Semper, Gottfried. The Four Elements Of Architecture And Other Writings. Cambridge [England]: Cambridge University Press, 1989. Print.