

Transmission of foot-and-mouth disease SAT2 viruses at the wildlife-livestock interface of two major transfrontier conservation areas

Barbara P. Brito*¹, Ferran Jori^{2,3,4}, Rahana Dwarka⁵, Francois Maree^{3,6}, Livio Heath⁵ and Andres M. Perez⁶

* **Correspondance:** Dr. Barbara Brito, Universidad de Chile, Departamento de Medicina Preventiva Animal, Facultad de Ciencias Veterinarias y Pecuarias, Av. Santa Rosa 11735, La Pintana, Santiago, Chile
barbara.brito.r@gmail.com

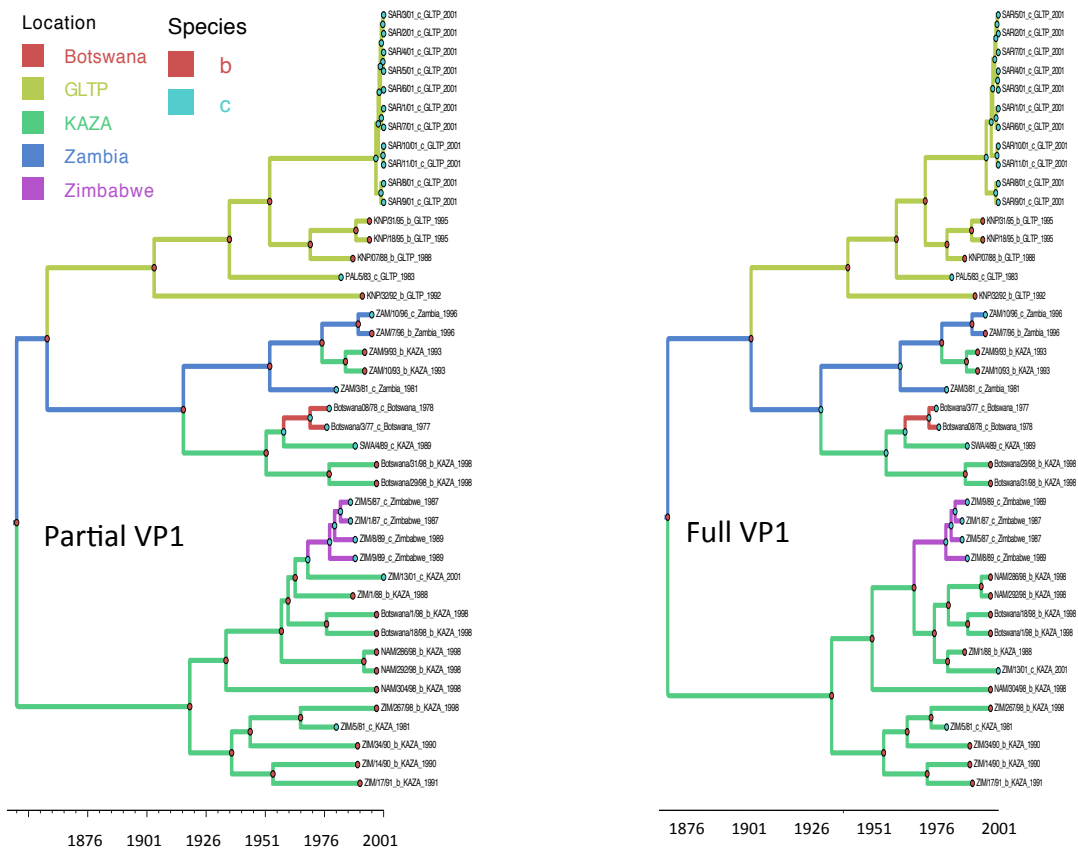


Image S1. The left panel depicts the MCC tree of FMDV SAT2 phylogeny reconstructed using a subset of virus with available full VP1 sequencing. MCC tree on the left panel shows the MCC tree reconstructed using only partial VP1 sequences of the same viruses.