

Supporting Information Figure S4

Revised timeline and distribution of the earliest diverged human maternal lineages in southern Africa

Eva K.F. Chan, Rae-Anne Hardie, Desiree C. Petersen, Karen Beeson, Riana M.S. Bornman, Andrew B. Smith and Vanessa M. Hayes

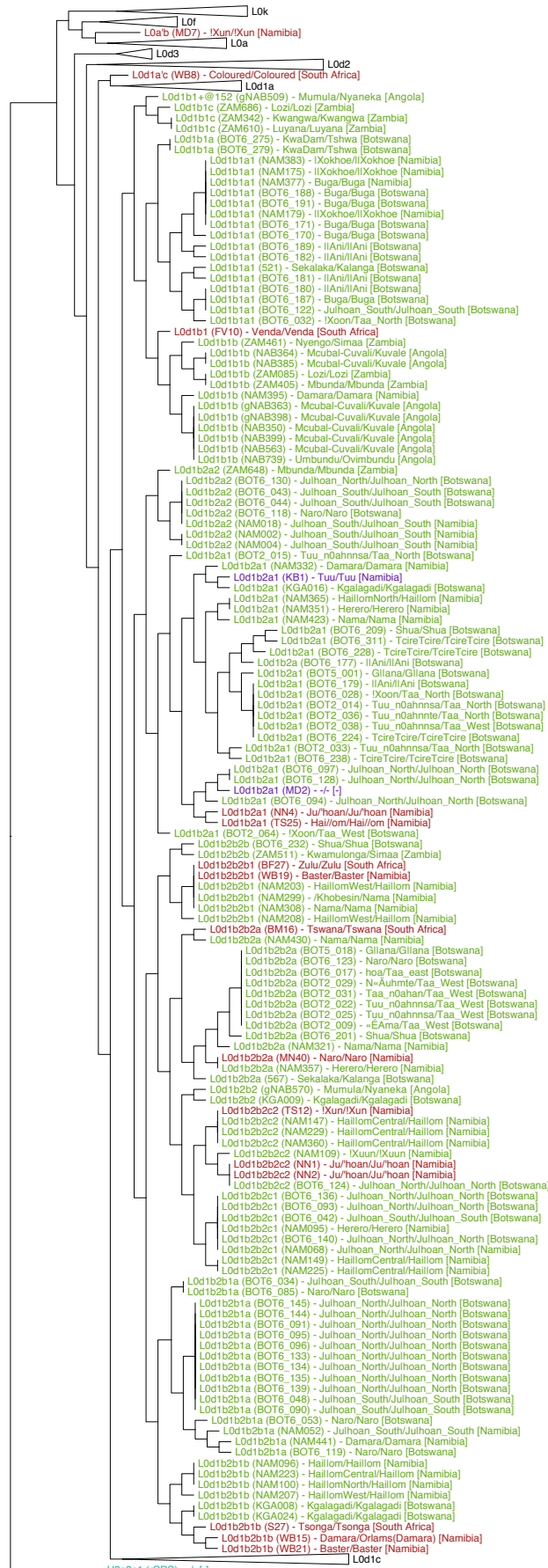


Fig. S4. Phylogenetic tree for L0d1b. Phylogeny was inferred using a total of 258 mtDNA, including all 139 mtDNA in the focus set and 119 additional L0d1b mtDNA from Barbieri *et al.* 2013. Haplogroups other than L0d1b are “collapsed”. Tips of L0d1b genomes are labeled with the format: Haplogroup (Isolate Name) - Language/Isolate Source [Country], where Isolate Name, Isolate Source, and Country are information included in the corresponding GenBank entries, and Language is the reported spoken language. Tip colours reflect data source: Red = current study, Green = Barbieri *et al.* 2013, Purple = Schuster *et al.* 2010, and Aqua = NCBI.