

EXTRACTION OF THE INHERENT NATURE OF WIND USING WAVELETS

Md. Mahbub Alam^{a,b,*}, S. Rehman^c, L. M. Al-Hadhrami^c, J.P. Meyer^d

^aInstitute for Turbulence-Noise-Vibration Interaction and Control, Shenzhen Graduate School
Harbin Institute of Technology, Shenzhen 518055, China

^bKey Lab of Advanced Manufacturing Technology, School of Mechanical Engineering and Automation
Shenzhen Graduate School, Harbin Institute of Technology, Shenzhen 518055, China

^cCenter for Engineering Research, Research Institute, King Fahd University of Petroleum and Minerals, Dhahran-
31261, Saudi Arabia and

^dMechanical and Aeronautical Engineering Department, University of Pretoria, Pretoria, South Africa

*E-mail: alamm28@yahoo.com

ABSTRACT

Due to the availability of multi-megawatt wind turbines, ease of installation and maintenance, economic compatibility and commercial acceptance, the power of the wind is being used globally for both grid-connected and off-grid applications. The power of the wind is intermittently available due to the fluctuating nature of the wind and hence needs to be understood well. Therefore, its variability in time and spatial domains was studied. The present work utilized daily mean values of wind speed from different meteorological stations spread over the Kingdom of Saudi Arabia in conjunction with wavelet transform and fast Fourier transform power spectrum techniques to understand the dynamic nature of the wind at nine stations. The study found that wind speed changed by ± 0.6 to ± 1.6 knots over a long period of about 10 years depending on the locations. The long-term mean wind speed of 5.6, 8.9, 6.25, 8.1, 6.0, 7.1, 6.0, 8.6 and 7.3 knots were obtained at Abha, Dhahran, Gizan, Guryat, Hail, Jeddah, Riyadh, Turaif and Yanbo, respectively. The annual fluctuation in wind speed is larger (± 1.3 to ± 3.0 knots) and more regular at Abha, Dhahran, Guryat and Yanbo, while smaller (± 0.7 to ± 1.1 knots) and less regular at Gizan, Hail, Jeddah, Riyad and Turaif, with the greatest (± 3.0) and smallest (± 0.7) at Guryat and Gizan, respectively.

INTRODUCTION

When thinking of installing a wind farm at a site, an indispensable task is to conduct an on-site wind speed measurement campaign for a few years (the longer the better) and analyze the measured data to extract information on the variability of the wind [1]. The variability covers a wide spectrum of time-scales from seconds to several years, say,

random variation at very short interval (turbulence scale), synoptic scale, seasonal variation, annual cycle variation, etc. This statistical information is required not only for a feasibility study of the wind farm to be installed but also for wind power prediction at different years/seasons/months/day as well as wind turbine control. This article provides statistical information about wind speed nature for a long time in the past which is directly needed for long-term wind speed predictions. Furthermore, without analytical prediction, the statistical information on variations of past wind at different time-scales can give us a rough idea about how the wind will behave in the near future [2].

Usually, most of the signals contain numerous non-stationary or transitory characteristics such as drift, trends, abrupt changes, and beginnings and ends of events. These characteristics are often the most important part of the signal and are needed to be analyzed to understand physical phenomena hidden behind the signal. To study these characteristics, wavelets have been being developed since the early eighties. Wavelet analysis methods allow the use of long time intervals where we want more precise low-frequency information, and shorter regions where we want high-frequency information. One major advantage afforded by wavelets is the ability to perform local analysis, that is, to analyze a localized area of a larger signal.

Kitagawa and Nomura [3] used the inverse wavelet transform method to generate wind velocity fluctuations. To investigate the timescale structure of natural wind, the wavelet transform was applied to the time history of measured wind velocity data. Pettit *et al.* [4] applied the wavelet transform to the time data of roof-corner pressures with extreme local loads and obtained the PDFs on the time-dependent characteristics of the pressure transients. Based on these PDFs, a method to

generate synthetic signals was developed, and time histories similar to the original roof-corner pressure data were composed. Aksoy *et al.* [5] introduced a new wind speed data generation scheme based on wavelet transform and compared this scheme with existing wind speed generation methods. Their results proved that the proposed wavelet-based method was found to be the best for wind speed data generation compared with existing methods. Chellali *et al.* [6] applied wavelet transform as a time-frequency analysis to meteorological data for the region of Adrar, Algeria. They conducted this analysis to investigate the power spectra behaviors of wind speed and its variations with time. The results showed significant synoptic oscillations for periods of 2 to 16 days in the cold weather. The wavelet power spectrum also revealed the presence of intra-seasonal oscillations for periods of 30 to 60 days.

When the wind has salient periodic features only over limited intervals of times, a global Fourier analysis is theoretically possible; but it may not be practical or efficient. The Fourier transform is limited because an analysis with single window cannot detect features in the signal that are either much longer or much shorter than the window size. Therefore, to have better representation of the wind spectrum for such case, we should seek a representation that is capable of following the wind spectrum as it varies with time [7]. Such representation is known by Time–Frequency Representation [8].

The signals of meteorological parameters of the Kingdom of Saudi Arabia have so much noise that their overall shape is not apparent upon visual inspection but trends become clearer with each approximation. Thus, wavelet analysis is useful in revealing signal trends, a goal that is complementary to the one of revealing a signal hidden in the noise. If the signal itself includes sharp changes, then successive approximations look less and less similar to the original signal. A repeating pattern in the wavelet coefficient plots is characteristic of a signal that looks similar on many scales. If a signal is similar to itself at different scales, then the wavelet coefficients will also be similar at different scales. In the coefficients plot, which shows scale on the vertical axis, this self-similarity generates a characteristic pattern.

The main objective of the present work is to understand the fluctuating nature of the wind using wavelet and fast Fourier transform power spectrum techniques which are very useful to quantify the highly fluctuating natural phenomenon. Wind power industry is competing with the conventional power systems and hence accurate prediction of wind speed in future time domain is very helpful in assuring quality energy supply. Furthermore, the wind and other meteorological measurements are sparsely available and hence these methods can also be used to estimate values at locations where measurements are not available.

WAVELET METHODOLOGY

In wavelet theory, a function is represented by the infinite series expansion in terms of the dilated and translated version of a basis function and called the mother wavelet ψ :

$$\psi_{a,b}(t) = a^{-\frac{1}{2}} \psi\left(\frac{t-b}{a}\right), \text{ where } a > 0$$

$$T_{\psi} f(a,b) = a^{-\frac{1}{2}} \int_{-\infty}^{\infty} f(t) \psi\left(\frac{t-b}{a}\right) dt$$

where $T_{\psi} f(a,b)$ is called the wavelet transform of function $f(t)$. A wavelet transform T_{ψ} decomposes a signal into several groups of coefficients. Different coefficient vectors contain information about the characteristics of the sequence at different scales. It may be observed that the wavelet transform is a prism, which exhibits properties of a signal such as points of abrupt changes, seasonality or periodicity. The wavelet transform is a function of the scale of frequency (a) and the spatial position (b). The plane defined by the variables (a, b) is called the scale-space or time-frequency plane. The wavelet transform $T_{\psi} f(a,b)$ measures the variation of f in the neighborhood of b . For a compactly supported wavelet (for a wavelet vanishing outside a closed and bounded interval), the value of $T_{\psi} f$ depends on the value of f in the neighborhood of b of size proportional to the scale a . At small scales, $T_{\psi} f(a,b)$ provides localized information such as localized regularity (smoothness) of f . The global and local Lipschitz regularity can be characterized by the asymptomatic decay of wavelet transformation at small scales.

SPECTRAL SIGNATURE OF WIND SPEEDS CHARACTERISTICS (USING FFT)

Wind speed is a highly random meteorological phenomenon and changes with the time of the day, month, year, etc., and with geographical location. It is very difficult to predict the trend of wind speed both in time and spatial domains. In order to evaluate the frequency content of the time series of wind speed data, fast Fourier transforms (FFTs) providing power spectral density (PSD) are widely used. FFTs are useful to extract frequencies in a stationary or transient signal as well as their predominance over the entire time series.

In this chapter, illuminations are shed on FFT analysis results of wind speed time series data recorded at nine different locations, namely Abha, Dhahran, Gizan, Guryat, Hail, Jeddah, Riyadh, Turaif and Yanbo in Saudi Arabi. Wind speed data are obtained from the nine weather stations in Saudi Arabia, showing great potential for application in verifying the current criteria used for design practices. The FFT analysis is done through MATLAB software, which provides a very useful function in FFT algorithm. Parameters of engineering significance, such as hidden periodicities, frequency components, absolute magnitude and phase of the transformed data, power spectral density and cross-spectral density can be obtained. Here data analysis of daily average wind speed time series data is done for 1990 to 2005. The data was scanned every three seconds and 10-minute average values were recorded. Finally, the daily average values were obtained using 144 10-minute average values recorded during 24 hours. The

total number of daily average data points in the time series for 1990 to 2005 is 5960.

The power spectra of daily average wind speed time series data at the nine locations are shown in Figure 1. While the horizontal axis represents the frequency f (1/day = D^{-1}), the vertical axis shows energy at the frequency. Abha is a station with many hills around. As seen in Figure 1(a) for Abha, power spectral energy mostly concentrates on a low frequency range $0.002 - 0.006 D^{-1}$ with a peak at $f = 0.0027 D^{-1}$. The peak

the sea to the station. Here the peak corresponding to annual repetition ($f = 0.0027 D^{-1}$) is more clear (Figure 1b). However, the half-year recurrence that appeared at Abha is not explicit. The high-frequency energies ($f > 0.02 D^{-1}$) at Dhahran (Figure 1b) are larger than those at Abha (Figure 1a). A small peak emerges at $f = 0.074 D^{-1}$ at Dahran, which communicates to biweekly repetition of wind speed. The biweekly change in wind speed may be a unique feature for a coastal area as it is observed in other coastal area, namely Yanbo, which will be

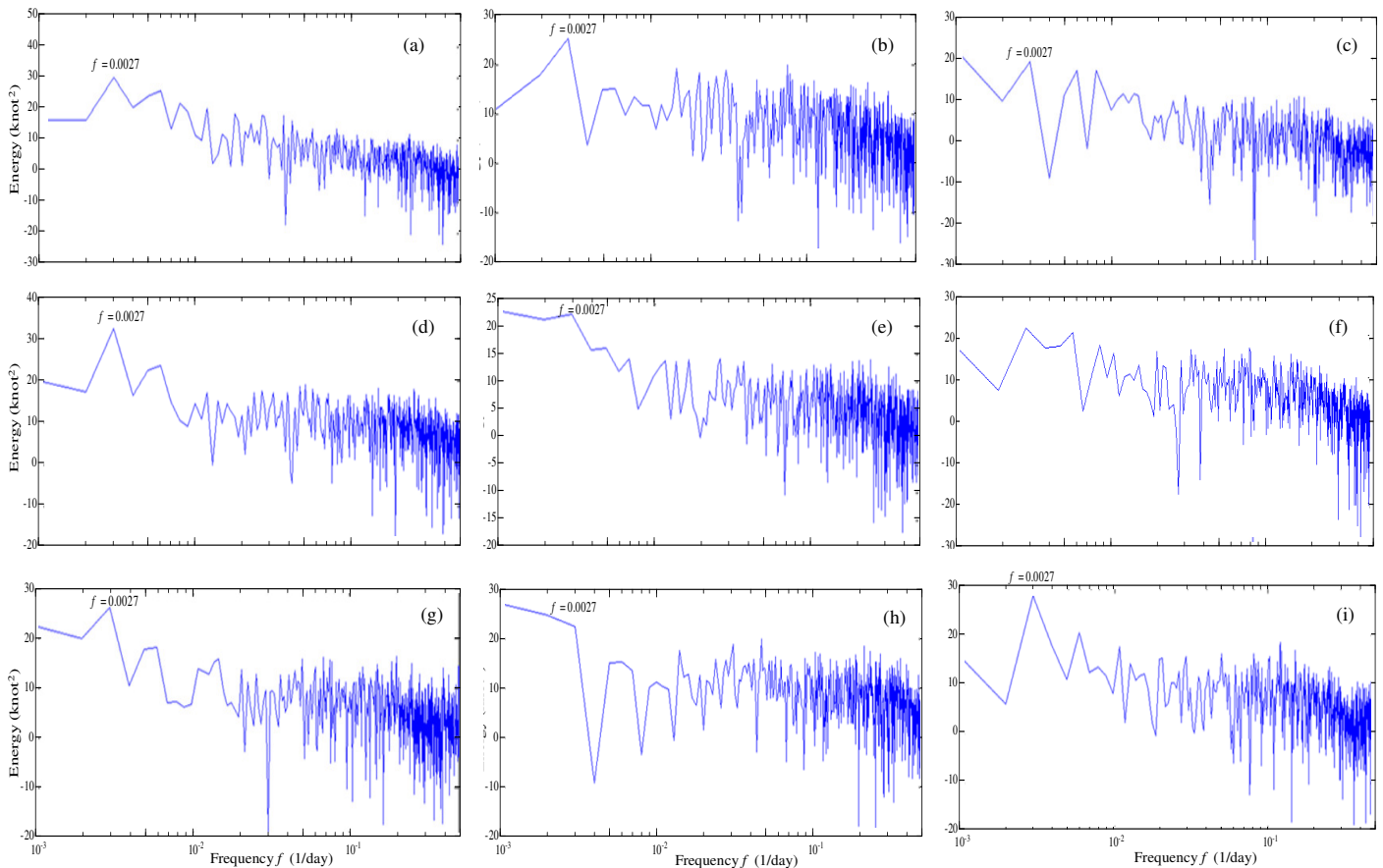


Figure 1 FFT power spectrum of wind speed data for (a) Abha, (b) Dhahran, (c) Gizan, (d) Guryat, (e) Hail, (f) Jeddah, (g) Riyadh, (h) Turaif, and (i) Yanbo.

corresponds to a period of about $T = 1/f \approx 370$ days \approx one year, implying that wind speed variation in a year is similar to that in another at least qualitatively. One should not be confused with the 370 days; the least deviation from exactly 365 days arises from the frequency resolution in the FFT analysis. The $f = 0.006 D^{-1}$ over which energy decays corresponds to about half a year. That is the half-year repetition in wind speed also exists. Dhahran is a coastal site 3 km inland from the Arabian Gulf. There is a small single-storey airport building in the vicinity of the meteorological station. The station is 17 m above the mean sea level and the wind direction is mostly from

presented later.

Gizan is a coastal station on the west coast of Saudi Arabia, some 100 meters inland. There are one small single-storey airport building and some trees around. This station is only 5 m above the mean sea level. The Red Sea is a bit more turbulent than the Arabian Gulf on the east coast (Dhahran) and is wide open. Therefore, the annual and biweekly peaks are not as dominant as those in Abha or Dhahran (Figure 1c). Another cause may be that the site is only 5 m above the sea level. Guryat is an inland station with high land and small hills with gentle topographical features. Since the station is high, the annual recurrence ($f = 0.0027 D^{-1}$) is more dominant than

that at Abha and Dhahran (Figure 1d). Hail is a highland plateau in the north central area of Saudi Arabia. As seen in Figure 1(e), speed varies not only annually ($f = 0.0027 \text{ D}^{-1}$) but also at further low frequencies ($f < 0.0027 \text{ D}^{-1}$), e.g. two- and three-year repetitions which will be further clarified through wavelet analysis results later.

Jeddah station is around 10 km inland from the Red Sea. The FFT power spectrum for this station is presented in Figure 1(f). There are many buildings around and it is situated in an urban area. The wind blows from the sea inwards and is intercepted by high-rise buildings and structures such as bridges and other industrial installations. Due to this confrontation of wind with structures, the annual maximum wind speed is smaller compared with that in Abha, Dahran, Guryat and Hail. Gizan also has similar power spectra because of wind obstructed by trees. The presence of high-rise buildings and/or trees makes the flow boundary layer wider, resulting in a smaller speed. The FFT power spectrum obtained using long-term mean wind speed data for Riyadh is shown in Figure 1(g). Riyadh station is on the mainland and is around 450 m above the mean sea level. Riyadh is the capital of Saudi Arabia, hence it is a very developed region and surrounded by high-rise buildings, bridges and various industrial installations. The winds are prevalent from the northern and north-western direction in this region. Since the site is quite high above sea level, the annual variation is evident.

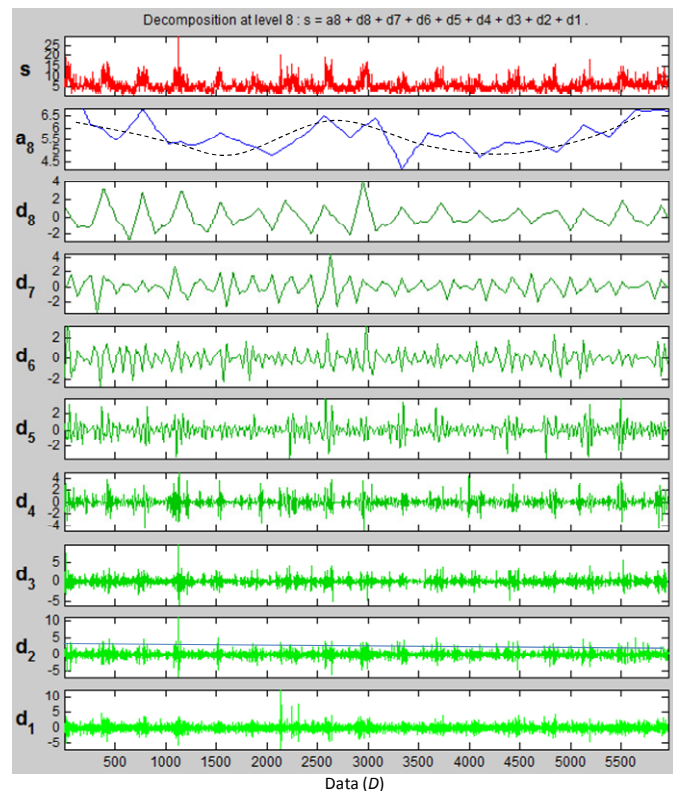


Figure 2 Decomposition of wind speed time series data for Abha using DB8.

The FFT power spectrum for Turaif is shown in Figure 1(h). Turaif is a small city in the northernmost part of Saudi Arabia

and is a hilly inland area. The wind blows mostly from the north onto this area and accelerates due to topographical features. The power spectrum displays low-frequencies variation ($f < 0.0027 \text{ D}^{-1}$), having similar characteristics to that at Hail. Yanbo is a coastal site on the Red Sea in the north-west of Saudi Arabia. It is an industrial area and is surrounded by a range of hills on the northern side and exposed to the sea on its western side. The station is 10 m above the mean sea level. The peak at $f = 0.0027 \text{ D}^{-1}$ is sharp, indicating the annual variation in wind speed is very regular (see Figure 1i). A biweekly variation also exists. A scrupulous observation of all the FFT figures reveals that Abha, Dhahran, Guryat and Yanbo having a sharp peak at $f = 0.0027 \text{ D}^{-1}$ retain a more regular annual repetition of wind speed than Gizan, Hail, Jeddah, Riyadh and Turaif. Wavelet analysis results will provide more details.

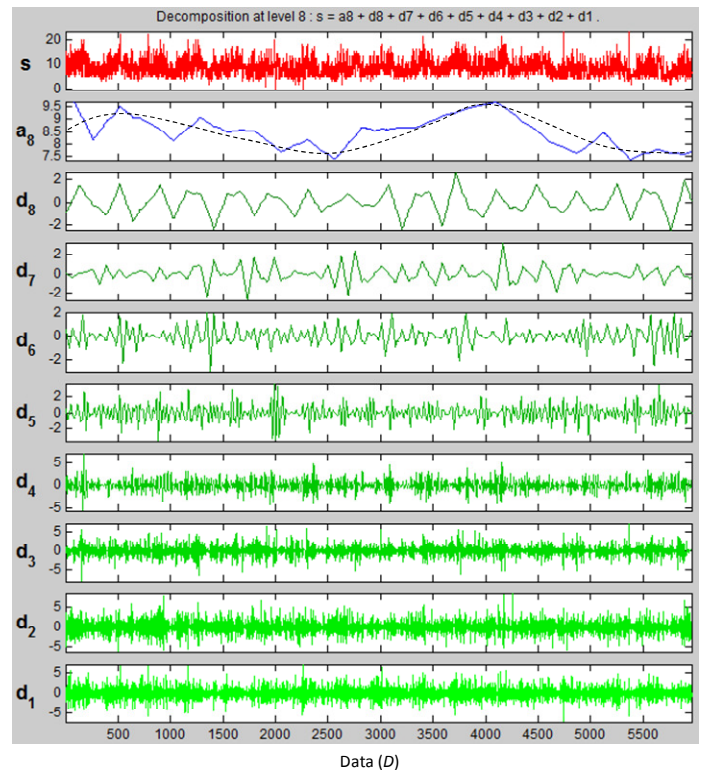


Figure 3 Decomposition of wind speed time series data for Dhahran using DB8.

INTRINSIC FEATURES OF WIND SPEED (USING WAVELET DECOMPOSITION)

A discrete wavelet analysis of the daily mean values of wind speed time series data was conducted over a period of 1990 - 2005 at the nine locations (Abha, Dhahran, Gizan, Guryat, Hail, Jeddah, Riyadh, Turaif and Yanbo) using db8. Naturally the daily mean signal captures information for a period of longer than 2 days following the Nyquist frequency criterion. The decomposition analysis results of wind speed data for Abha, Dhahran, Gizan, are shown in Figs. 2, 3 and 4, respectively, while those for Guryat, Hail, Jeddah, Riyadh,

Turaif and Yanbo are not shown here. In these figures, the x -axis presents the number of days (D) of the entire data period (1990 to 2005) used in this study. Each of these figures has 10 parts. The first part 'S' represents the signal or raw data and the second part 'a₈' corresponds to the amplitude of the signal for wavelet Daubechies (db) at level 8 corresponding to a period of longer than 512 days. Note that that the dashed line in a₈ signal is not an output of the analysis, but just a hand sketch showing the low-frequency trend. The last eight parts, i.e. d₁, d₂, d₃, d₄, d₅, d₆, d₇ and d₈ of these figures represent details of decomposed signals of the raw data at eight different levels corresponding to a period range of 2 to 4, 4 to 8, 8 to 16, 16 to 32, 32 to 64, 64 to 128, 128 to 256 and 256 to 512 days, respectively.

The raw signal S in Figure 2 (Abha) displays a sharp spike at $D = 1200$ and a nearly regular variation of speed. The nearly regular variation is evident in the d₈ signal with a periodicity of approximately 365 days (one year), forming a peak between June and August of each year. The minimum speed occurs sometime in December to January. The fluctuation of the speed is relatively high, -2.5 to 2.5 knots for $D < 3300$ (< 1998) and -2 to 2 knots for $D > 5000$ (> 2003) and small, -1 to 1 knots for $D = 3300$ to 5000 corresponding to year 1998 to 2003. On an average, the fluctuation occurs from -1.7 to 1.7 knots. That is, an annual fluctuation can contribute a speed of ± 1.7 knots. Further low-frequency (longer than 512 days) variation is evident in signal a₈. This signal can also be considered as the signal of yearly (exactly 256 days) average wind speed. The duration for the average is long enough. The signal, however, contains approximately two-year undulations with small amplitudes. If the two-year undulation is ignored, the mean speed indicated by the dashed line is initially about 7 knots, slowing down to 4.7 knots at $D = 1700$ (1995), followed by augmentation to 6.5 at $D = 2800$ (1998). This variation constitutes a period of about 8.5 years as evidenced by the dashed line. This information is very useful for a long-term wind prediction and power production. The observation also explains why a long-term wind speed trend at a location should be known to run a wind farm productively. Signals d₇ and d₆ display oscillation with a period of about a half and a quarter year, respectively. The oscillation is, however, small (± 2 knots). The d₅ and d₄ signals have some large amplitude variations in the ranges of peaks in d₈ signal. The amplitude is greater in d₄ (± 2.0 knots) than d₅ (± 1.5 knots). The observation insinuates that the monthly variation in wind speed is stronger than the bimonthly variation and it occurs in the peak season (June to August) of wind speed. The d₃ and d₂ signals display a spike at $D = 1200$; the spike is nevertheless larger at d₂ than d₃. It has been mentioned that in signal S there is a spike at $D = 1200$ where the magnitude of speed is about 27 knots, which can now be explained with a view on d₂ signal that around $D = 1200$ (1993) there was a persistent wind gust or storm in a period of 4 to 8 days. Similarly, another wind gust is observed in d₁ signal at $D = 2200$ (1996) for a shorter period of 2 to 4 days. Overall, wind speed variation is stronger for a period of one year (d₈), half a year (d₇), one month (d₄) and less than 8 days (d₁ and d₂) but weaker for a period of a quarter year (d₆), bimonthly (d₅), and bi-weekly (d₃).

At Dhahran, a station on the east coast of Saudi Arabia, the raw signal 'S' in Figure 3 displays sharp spikes at $D = 500, 800, 2000, 3400, 4150, 4750, 5400$. Gusty winds were afoot more frequently. Here the long-term variation shown by the dashed line in a₈ represents a period of about 9 years. This long-term variation period is almost the same for both Abha and Dhahran. The speed fluctuates from 8.3 to 9.5 knots (dashed line), while that for Abha oscillates from 4.7 to 6.5 knots. Therefore, the mean speed over the whole duration can be considered as 8.9 knots for Dhahran and 5.6 knots for Abha. The contribution of the long-term variation to the speed is about ± 0.6 and ± 0.9 knots for Dhahran and Abha, respectively. The annual variation of speed (d₈ signal) is more regular for Dhahran than for Abha, forming a peak in the months of April to June of each year. This regularity was also reflected in the power spectrum results with a peak at $f = 0.0027$ appearing sharper at Dhahran than at Abha. While the mean variation in amplitudes at Dhahran (d₈ signal) is about ± 1.3 knots, that at Abha is about ± 1.7 knots, i.e. slightly larger in the latter. The d₇ - d₃ signals display almost the same characteristics as those for Abha. The d₂ and d₁ signals, however, have larger amplitudes at Dhahran than at Abha. The larger amplitudes at Dhahran result from the fact that Dhahran is 17 m above the sea level and very close (3 km) to the sea.

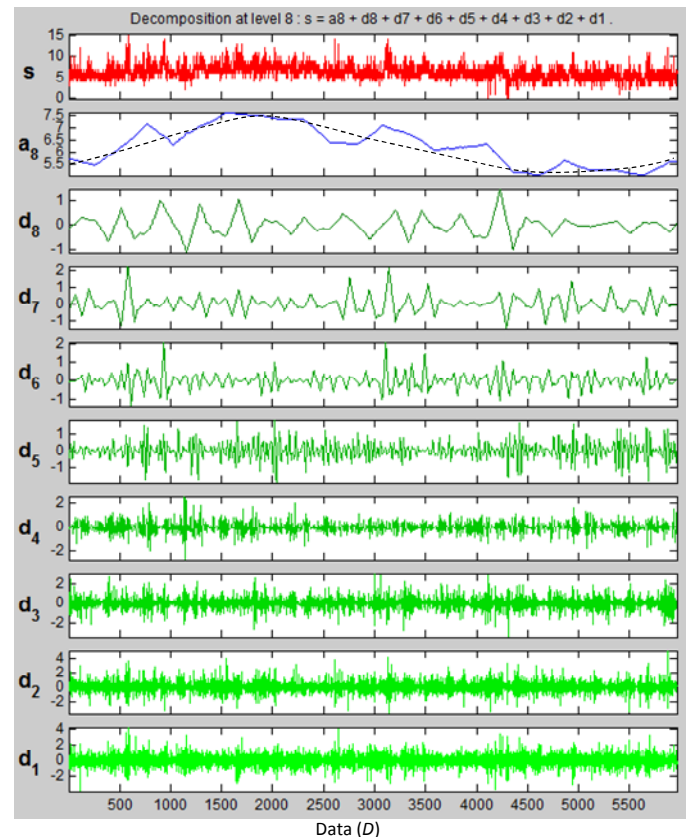


Figure 4 Decomposition of wind speed time series data for Gizan using DB8.

At Gizan (Figure 4), which is located on the south-west coast of Saudi Arabia, the long-term variation period (dashed

line) is slightly longer, about 12 years with a change in speed from 5.0 to 7.5 knots. The entire duration average is about 6.25 knots. The annual variation in amplitude is very small here, about ± 0.7 knots (d_8 signal). Because of the small amplitude, the corresponding peak at $f = 0.0027$ in the FFT power spectrum was not distinguished enough (Figure 1c). Wavelet analysis results for Guryat, Hail, Jeddah, Riyadh, Turaif and Yanbo are shown here; Table 1 extracts important intrinsic features of wind speed analysis results in Figures 2-4 and in the other figures not shown. The long-term (16 years) mean speed (second column), long-term period (third column) and long-term fluctuation (fourth column) are extracted from a_8 signals. On the other hand, annual fluctuation (fifth column), monthly fluctuation (sixth column) and half-weekly fluctuation in speed are obtained from d_8 , d_4 and d_1 signals, respectively. Having smaller fluctuations, other data are not included in Table 1. The data in Table 1 are plotted in Figs. 5 and 6 for the sake of a better perceptibility of comparison between different locations. The long-term mean speed is a minimum of 5.6 knots at Abha (Table 1, Figure 5). Dhahran, Guryat and Turaif undergo a higher speed of 8.9, 8.1 and 8.6 knots, respectively (Table 1, Figure 6). It is interesting that the wind speed has a long period of about 10 (8.5 to 1.2) years (third column of Table 1) which contributes to a change in speed by ± 0.6 to ± 1.6 knots (fourth column) depending on the location.

The long-term contribution is, however, maximum at Yanbo (± 1.6 knots) and Hail (± 1.5 knots). It was found in the FFT analysis results that Abha, Dhahran, Guryat and Yanbo showing a sharp peak at $f = 0.0027$ preserved a more regular annual repetition than Gizan, Hail, Jeddah, Riyadh and Turaif. The data in the fifth column agree with the observation in the FFT analysis results, displaying larger fluctuations (± 1.3 to ± 3.0 knots) at the former locations and smaller (± 0.7 to ± 1.1 knots) at the latter locations. The annual variation is, however, the largest (± 3.0 knots) at Guryat and the smallest (± 0.7 knots) at Gizan. Except for the small value (1.5 knots) at Gizan, the monthly fluctuation is less dependent on location, nestling between ± 2.4 and ± 3.0 knots. Among the long-term, annual, monthly and half-weekly fluctuations (Table 1 and Figure 6),

the half-weekly fluctuation is the largest at all locations, varying from ± 1.6 to ± 3.8 knots. This observation points to the fact that the daily fluctuation should also to be investigated. Overall, the annual, monthly, and half-weekly fluctuations are the largest at Guryat and the smallest at Gizan. The most possible cause behind the largest and smallest fluctuations at Guryat and Gizan, respectively, is that while Guryat is a high land with low and high hills, Gizan is a coastal area only 5 m above the sea level. The information in Table 1 will be very useful for short- and long-term wind forecasts, hence to distinguish idle and running periods of a wind turbine. Using wavelet transform, Chellali *et al.* [6] made a time-period analysis of wind speed data recorded at Adrar, Algeria for four years (2005 to 2009). Their analyzing period ranged from 2 to 64 days only, which is rather small compared with our range of 2 to 512 days investigated. They observed the dominant oscillation of periods between 2 and 16 days including intra-seasonal oscillations of periods between 30 and 60 days.

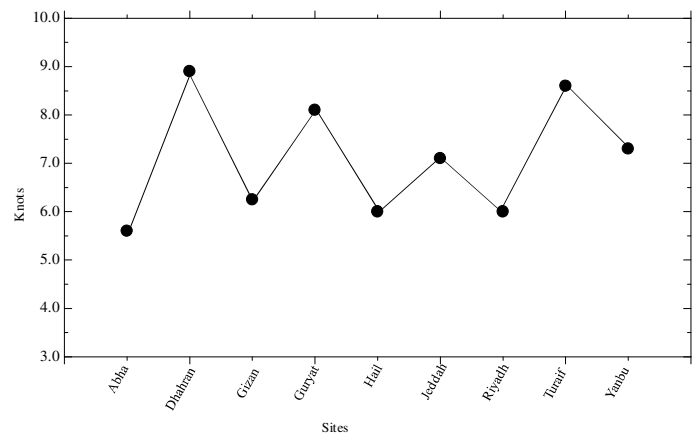


Figure 5 Long-term (16 years) mean wind speed at different sites.

Table 1. Intrinsic features of wind speed at different locations. June to August is the wind peak season.

Site	a_8			d_8	d_4	d_1
	Long-term mean speed (knots)	Long-term period (years)	Long-term fluctuation (knots)	Annual fluctuation (knots)	Monthly fluctuation, June – August (knots)	Half-weekly fluctuation (knots)
Abha	5.6	8.5	± 0.9	± 1.7	± 2.6	± 2.5
Dhahran	8.9	9	± 0.6	± 1.3	± 2.9	± 3.3
Gizan	6.25	12	± 0.9	± 0.7	± 1.5	± 1.6
Guryat	8.1	9	± 0.9	± 3.0	± 3.0	± 3.8
Hail	6.0	9	± 1.5	± 1.0	± 2.4	± 3.0
Jeddah	7.1	10.5	± 0.9	± 1.1	± 2.4	± 2.5
Riyadh	6.0	9.5	± 0.65	± 1.1	± 2.8	± 2.9
Turaif	8.6	10	± 1.4	± 0.9	± 2.5	± 3.5
Yanbo	7.3	10.5	± 1.6	± 1.7	± 2.5	± 3.0

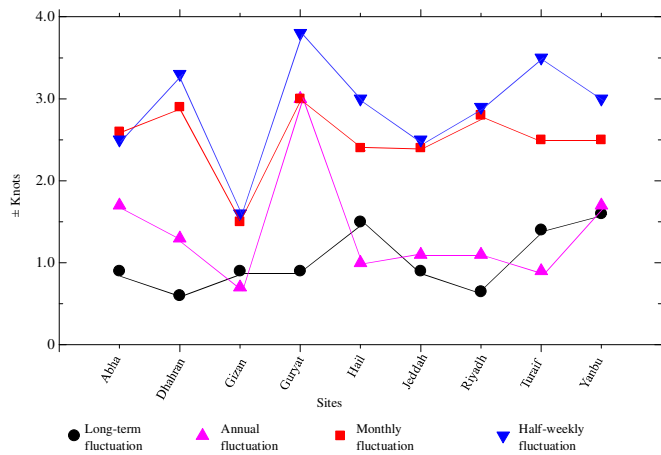


Figure 6 Contributions of fluctuation in wind speed at different periods.

CONCLUSIONS

FFT and wavelet analyses were done of daily average wind speed time series data at nine different locations, namely Abha, Dhahran, Gizan, Guryat, Hail, Jeddah, Riyadh, Turaif and Yanbo in Saudi Arabia over the period 1990 to 2005. The analyses extracted the intrinsic features of wind speed, including long-term, annual, half-yearly, quarter-yearly, monthly, bi-weekly, weekly and half-weekly fluctuations. The information on speed fluctuations at different periods is very useful for meteorological purposes, including wind and weather forecasting.

The wind speed over Saudi Arabia has a long period of about 10 years, contributing to change in speed by ± 0.6 to ± 1.6 knots depending on the locations. The long-term contribution is maximum (± 1.6 knots) at Yanbo and minimum (± 0.6 knots) at Dhahran. The long-term mean wind speed is 5.6, 8.9, 6.25, 8.1, 6.0, 7.1, 6.0, 8.6 and 7.3 knots at Abha, Dhahran, Gizan, Guryat, Hail, Jeddah, Riyadh, Turaif and Yanbo, respectively. The annual fluctuation in wind speed is larger (± 1.3 to ± 3.0 knots) and more regular at Abha, Dhahran, Guryat and Yanbo, while smaller (± 0.7 to ± 1.1 knots) and less regular at Gizan, Hail, Jeddah, Riyadh and Turaif, with the greatest (± 3.0) and smallest (± 0.7) at Guryat and Gizan, respectively. Among long-term, annual, half-yearly, quarter-yearly, monthly, biweekly, weekly and half-weekly fluctuations, the largest change in wind speed occurs half-weekly, by about ± 1.6 to ± 3.8 knots depending on location. The highland and coastal sites, Dhahran, Guryat and Yanbo, correspond to larger annual, monthly and half-weekly fluctuations of wind speed.

ACKNOWLEDGEMENT

Alam wishes to acknowledge supports given to him from the Research Grant Council of Shenzhen Government through grants JCYJ20120613145300404 and JCYJ20130402100505796 and from China Govt through '1000-young-talent-program'. Rehman wishes to acknowledge the support of the Research Institute of King Fahd University of Petroleum and Minerals, Dhahran, Saudi Arabia.

REFERENCES

- [1] Jaramillo, O.A., and Borja M.A., Winds speed analysis in La Ventosa, Mexico: a bimodal probability distribution case, *Renewable Energy*, Vol. 29, 2004, pp. 1613-1630.
- [2] Garcia-Marin, A.P., Estevez, J., Jimenez-Hornero, F.J., and Ayuso-Munioz, J.L., Multifractal analysis of validated wind speed time series, *Chaos, Non-Linear Science*, Vol. 23, 2013, pp. 013133 .
- [3] Kitagawa, T., and Nomura, T., A wavelet-based method to generate artificial wind fluctuation data, *Journal of Wind Engineering and Industrial Aerodynamics*, Vol. 91, 2003, pp. 943-964.
- [4] Pettit, C.L., Jones, N.P., and Ghanem R., Detection and simulation of roof-corner pressure transients, *Journal of Wind Engineering and Industrial Aerodynamics*, Vol. 90, 2002, pp. 171-200.
- [5] Aksoy, H., Toprak, Z.F., Aytek, A., and Unal N.E., Stochastic generation of hourly mean wind speed data, *Renewable Energy*, Vol. 29, 2004, pp. 2111-2131.
- [6] Chellali, F., Khellaf, A., and Belouchrani, A., Wavelet spectral analysis of the temperature and wind speed data at Adrar, Algeria. *Renewable Energy*, Vol. 35, 2010, pp. 1214-1219.
- [7] Alam, M.M., Moriya, M., and Sakamoto, H., Aerodynamic characteristics of two side-by-side circular cylinders and application of wavelet analysis on the switching phenomenon, *Journal of Fluids and Structures*, Vol. 18, 2003, pp. 325-346.
- [8] Alam, M.M., and Sakamoto, H., Investigation of Strouhal frequencies of two staggered bluff bodies and detection of multistable flow by wavelets, *Journal of Fluids and Structures*, Vol. 20, 2005, pp. 425-449.