

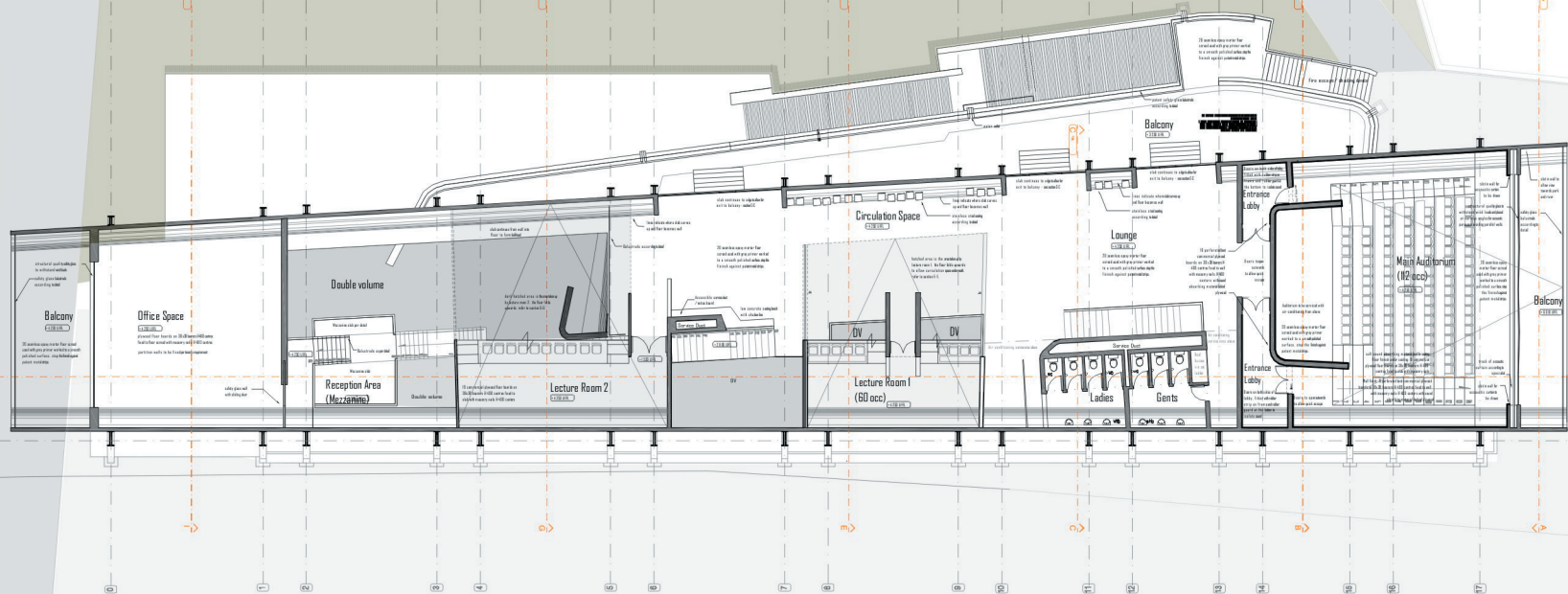
Main Road Rainbow Junction

Ground Floor Plan

November 2005

Scale 1:400

FACILITIES FOR THE DEVELOPMENT OF SPORT IN CONJUNCTION WITH THE 2010 SOCCER WORLD CUP : sports administration building



Main Road Rainbow Junction

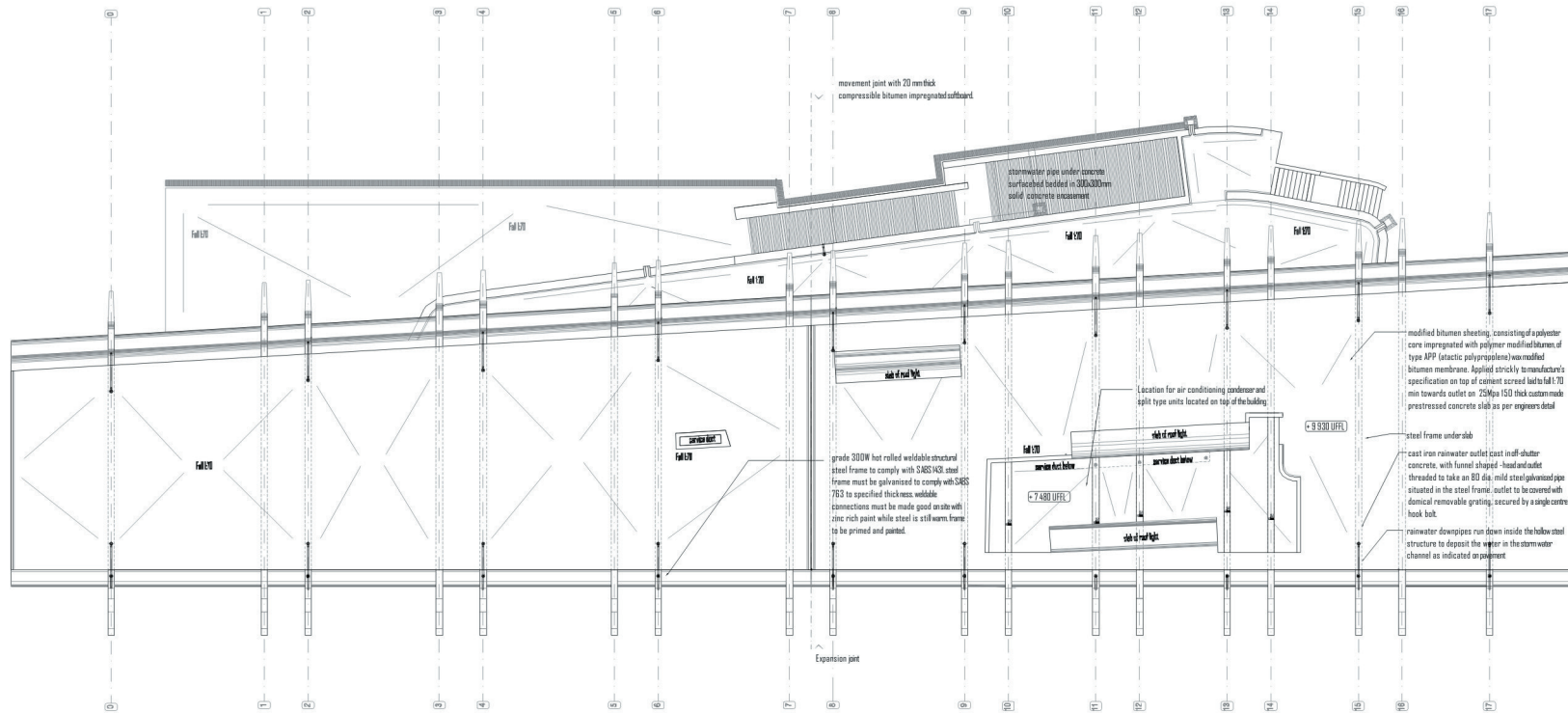
Pedestrian Walkway and Parking

First Floor Plan

November 2005

Scale 1:400

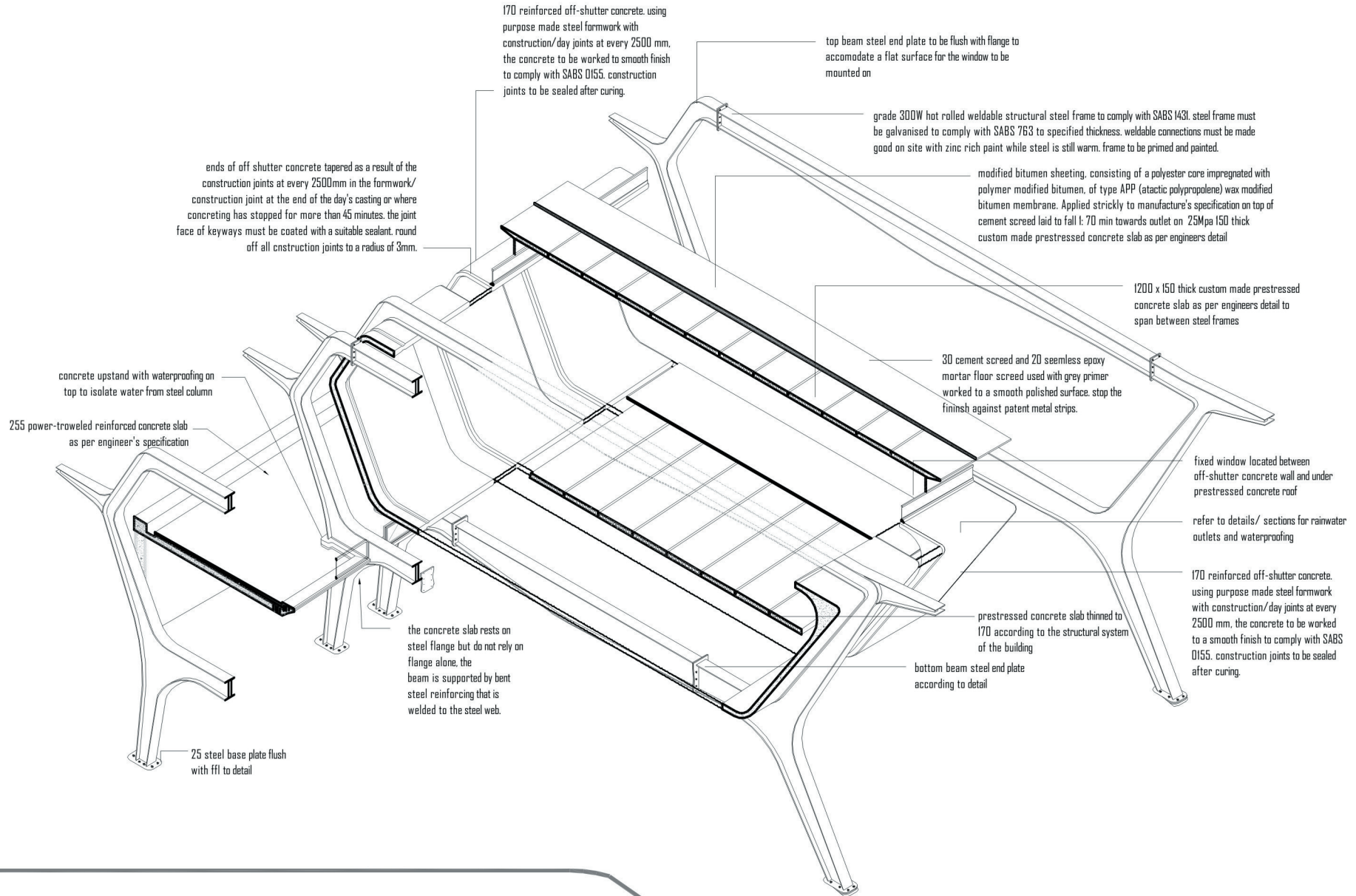
FACILITIES FOR THE DEVELOPMENT OF SPORT IN CONJUNCTION WITH THE 2010 SOCCER WORLD CUP : sports administration building



Roof Plan

November 2005

Scale 1:400

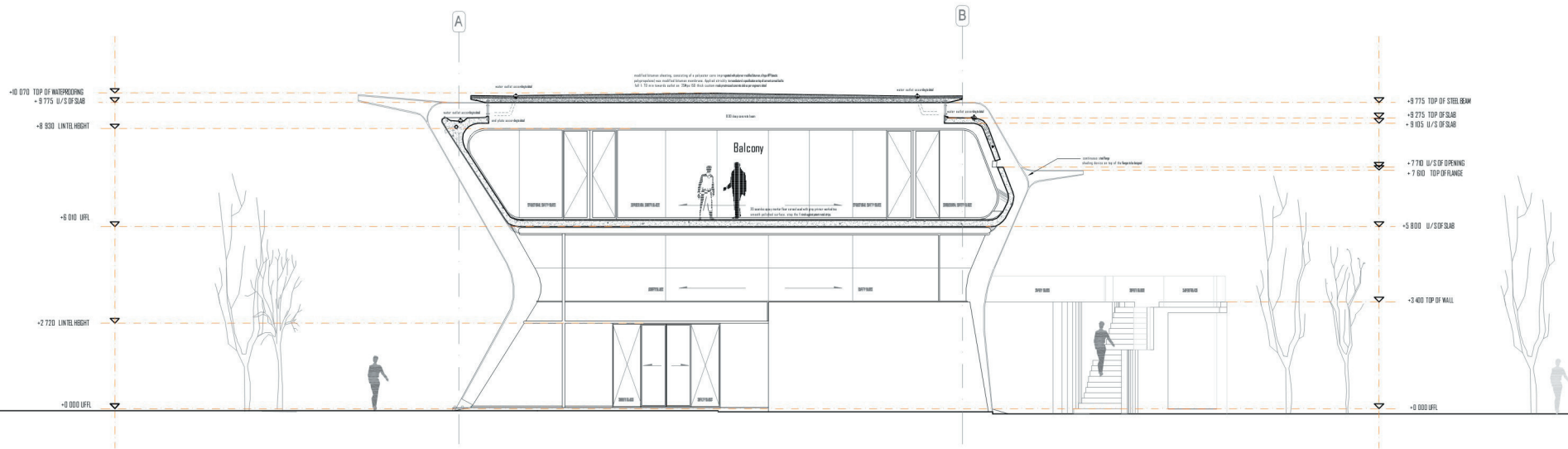


Isometric Sketch of the Structure

Scale 1:175

November 2005

FACILITIES FOR THE DEVELOPMENT OF SPORT IN CONJUNCTION WITH THE 2010 SOCCER WORLD CUP : sports administration building

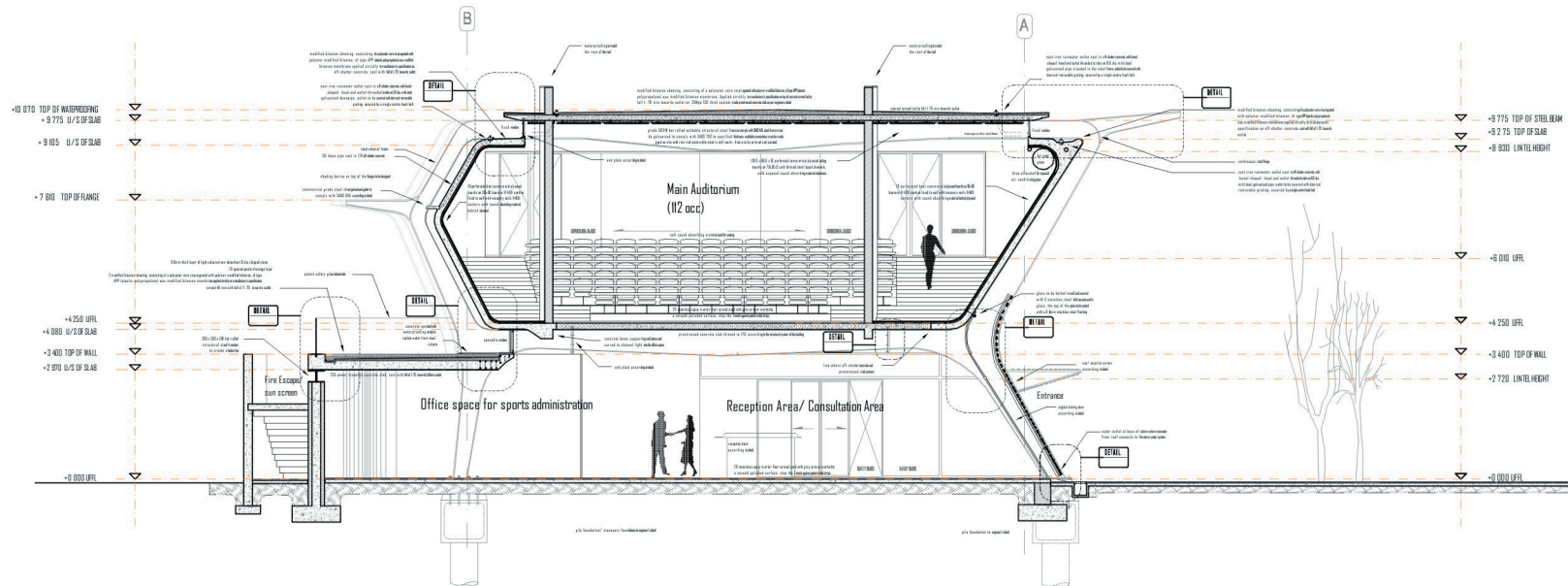


Section A-A

November 2005

FACILITIES FOR THE DEVELOPMENT OF SPORT IN CONJUNCTION WITH THE 2010 SOCCER WORLD CUP : sports administration building

Scale 1:200

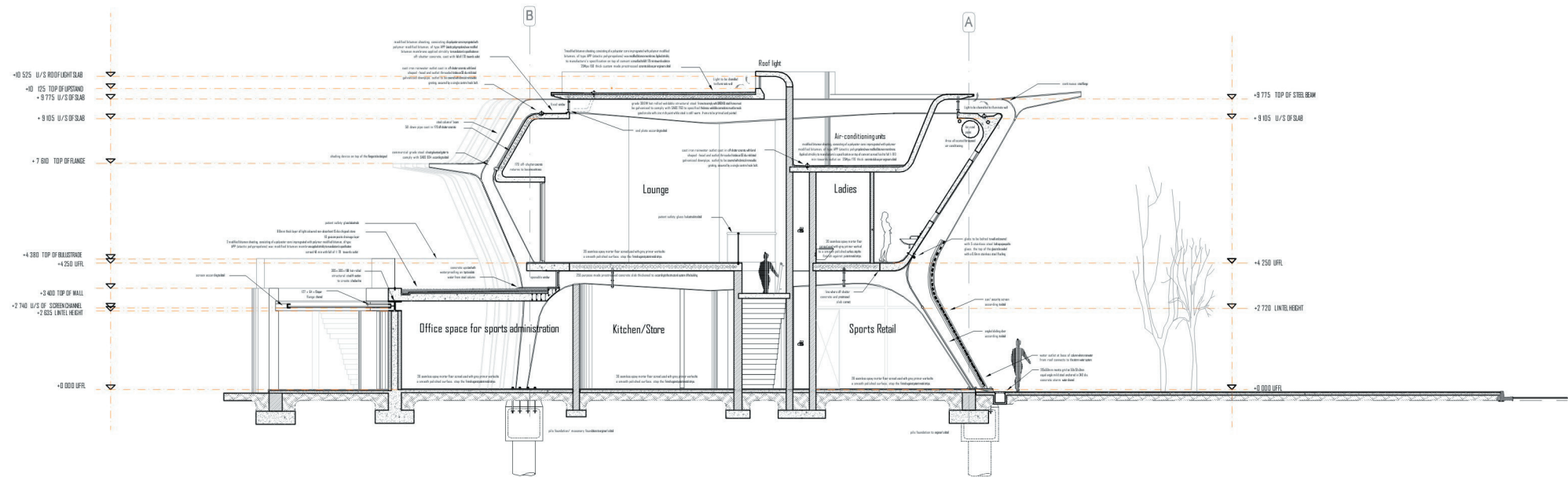


Section B-B

November 2005

Scale 1:200

FACILITIES FOR THE DEVELOPMENT OF SPORT IN CONJUNCTION WITH THE 2010 SOCCER WORLD CUP : sports administration building

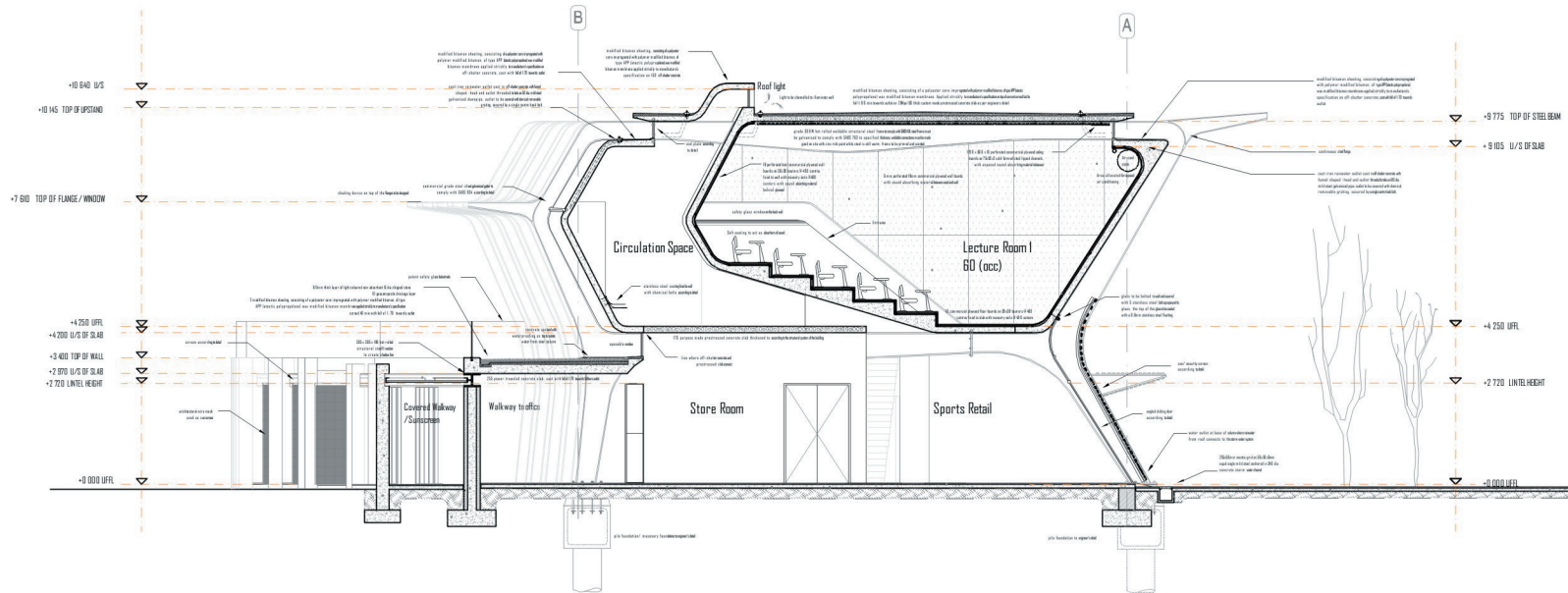


Section C-C

November 2005

FACILITIES FOR THE DEVELOPMENT OF SPORT IN CONJUNCTION WITH THE 2010 SOCCER WORLD CUP: sports administration building

Scale 1:200

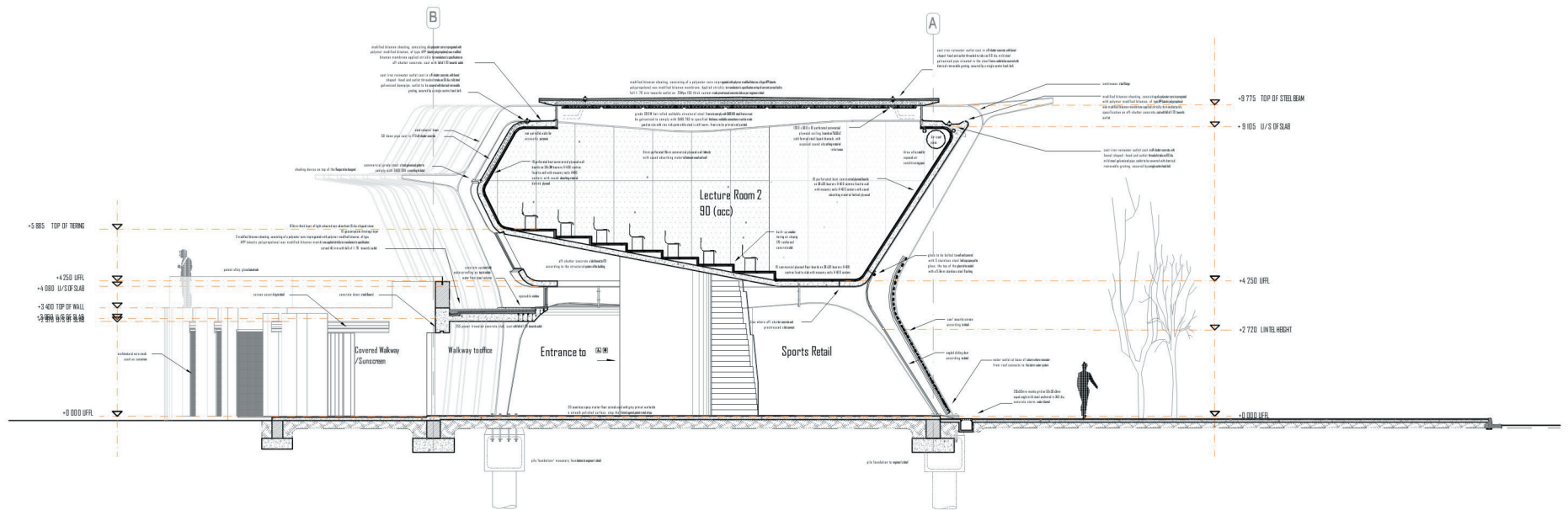


Section E-E

November 2005

Scale 1:200

FACILITIES FOR THE DEVELOPMENT OF SPORT IN CONJUNCTION WITH THE 2010 SOCCER WORLD CUP : sports administration building

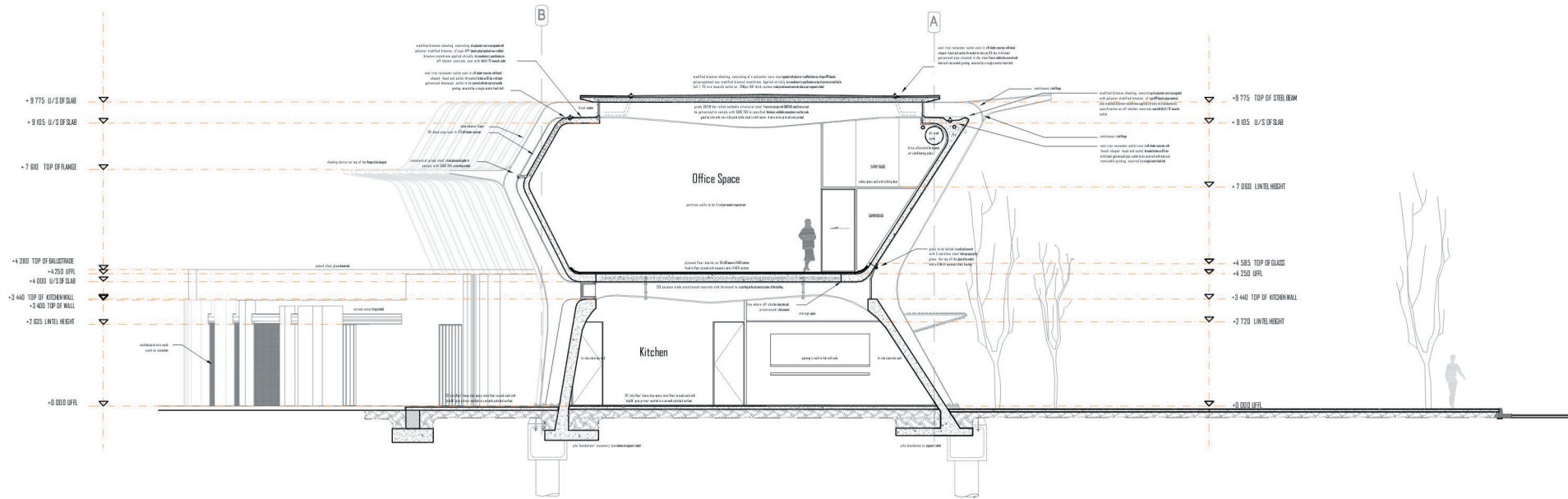


Section G-G

November 2005

Scale 1:200

FACILITIES FOR THE DEVELOPMENT OF SPORT IN CONJUNCTION WITH THE 2010 SOCCER WORLD CUP : sports administration building

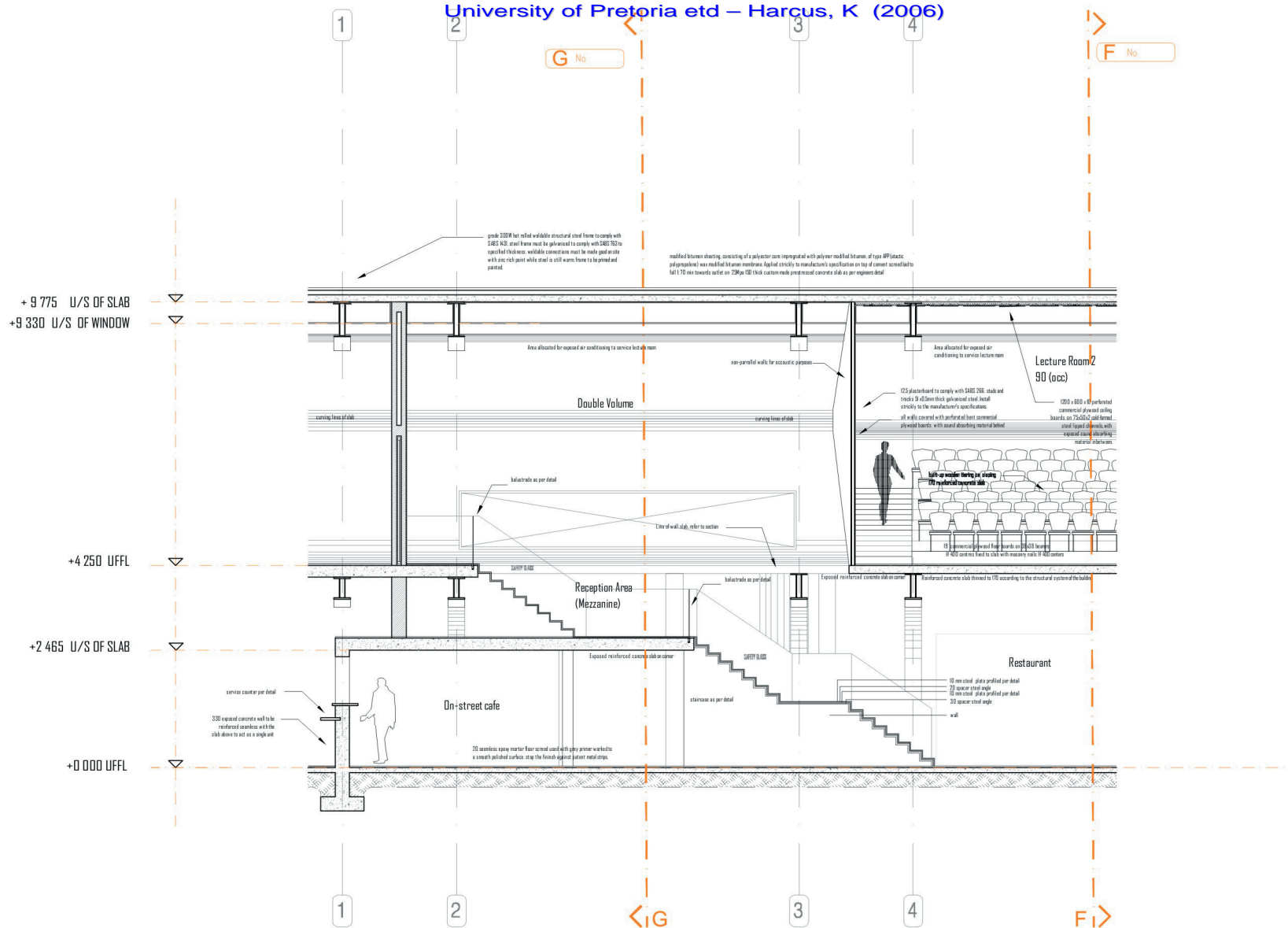


Section I-I

November 2005

FACILITIES FOR THE DEVELOPMENT OF SPORT IN CONJUNCTION WITH THE 2010 SOCCER WORLD CUP : sports administration building

Scale 1:200

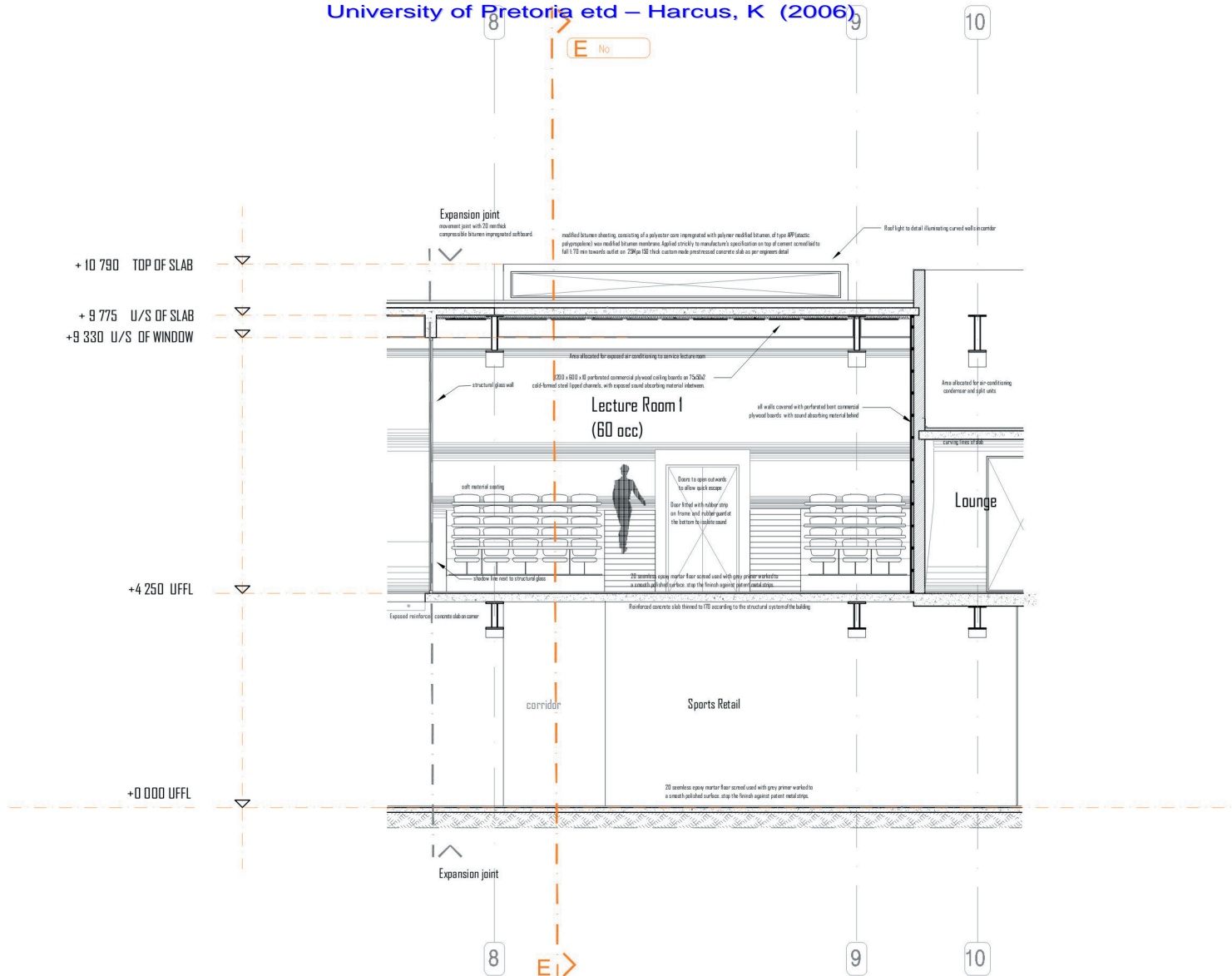


Detail A of section 1-1

November 2005

FACILITIES FOR THE DEVELOPMENT OF SPORT IN CONJUNCTION WITH THE 2010 SOCCER WORLD CUP : sports administration building

Scale 1:125

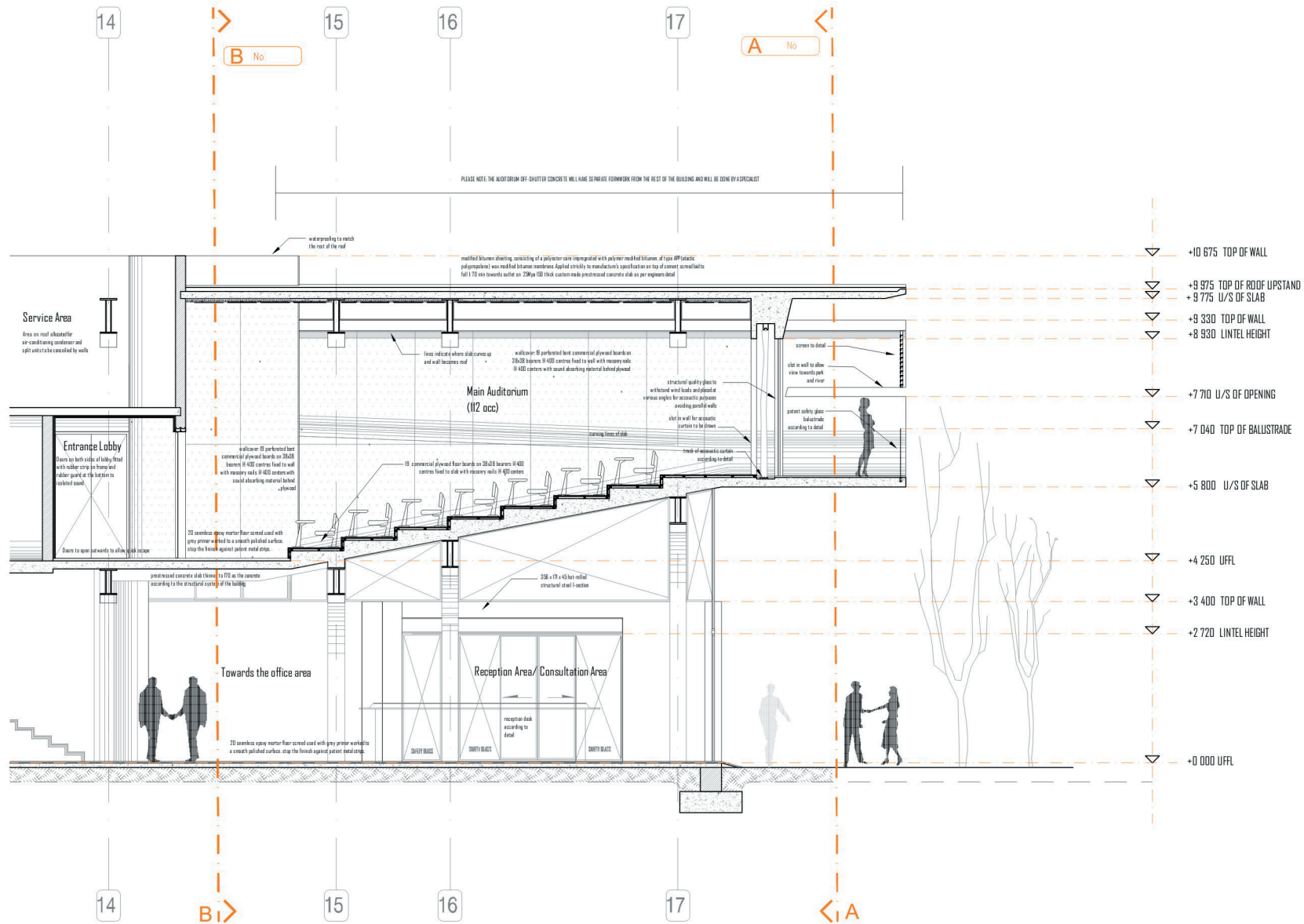


Detail B of section 1-1

November 2005

Scale 1:125

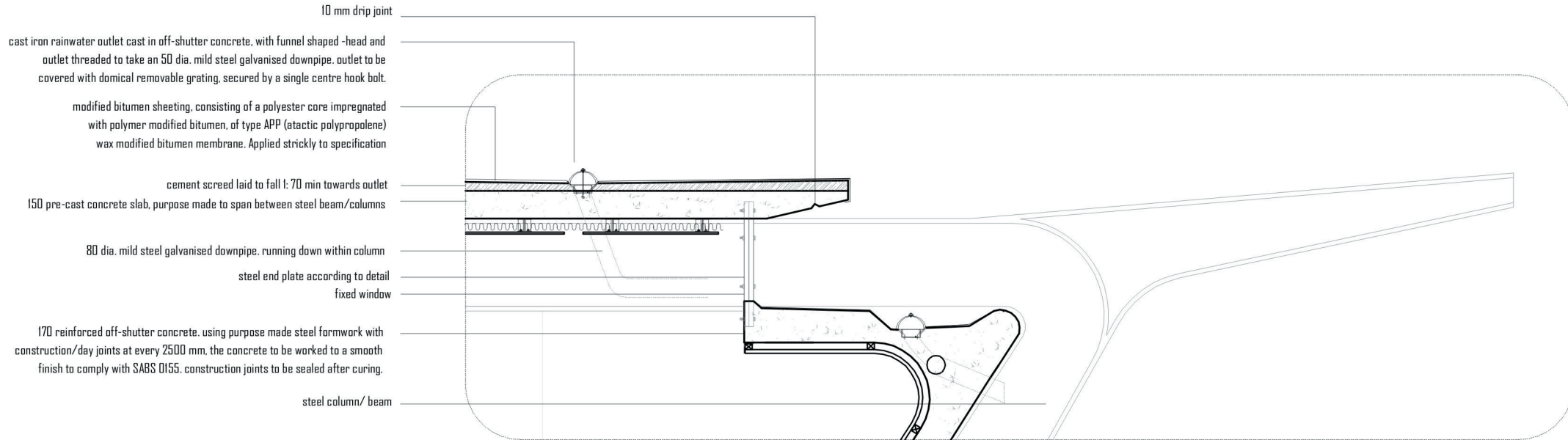
FACILITIES FOR THE DEVELOPMENT OF SPORT IN CONJUNCTION WITH THE 2010 SOCCER WORLD CUP : sports administration building



Detail C of section 1-1

November 2005

Scale 1:125

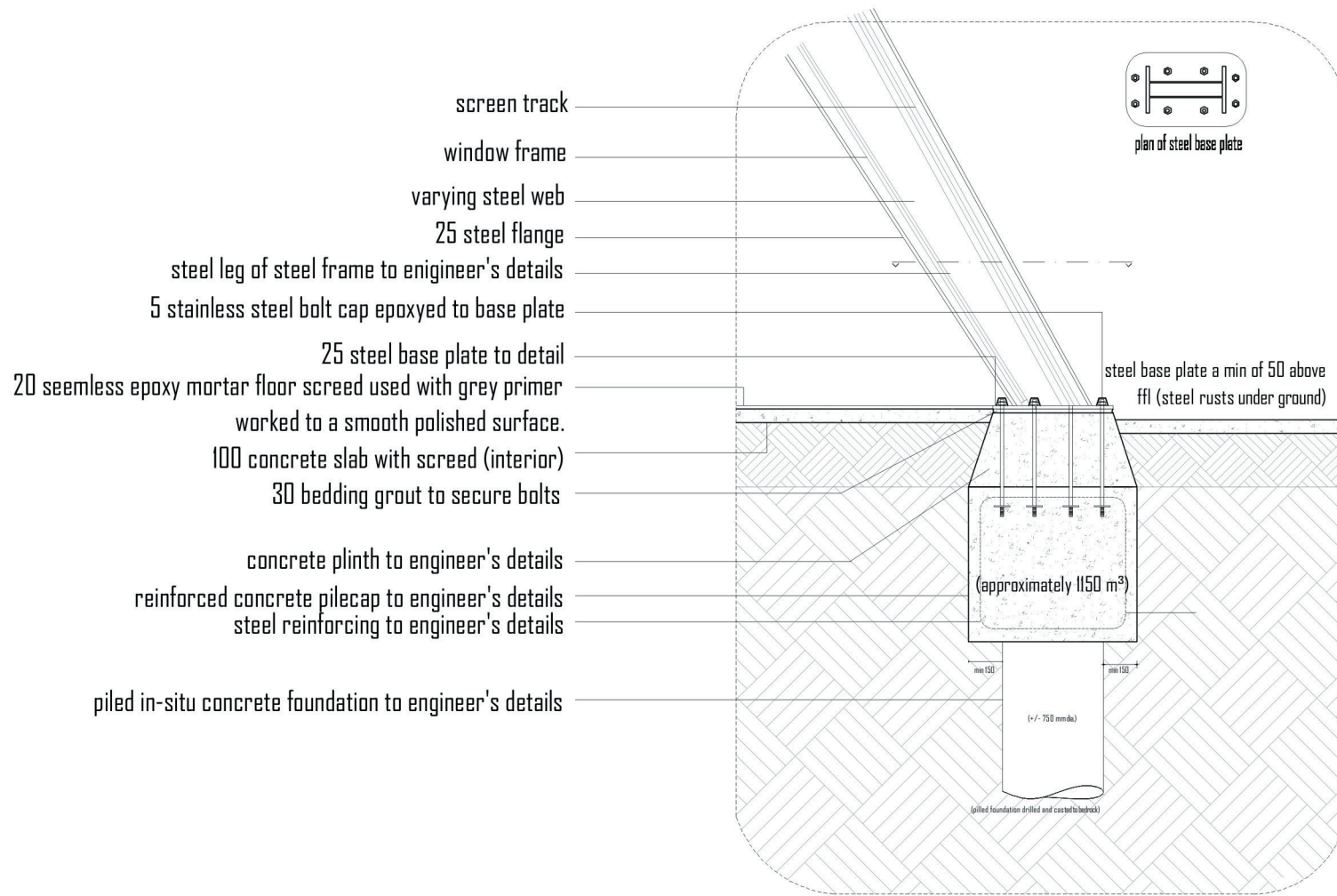


Detail of western roof edge

November 2005

FACILITIES FOR THE DEVELOPMENT OF SPORT IN CONJUNCTION WITH THE 2010 SOCCER WORLD CUP : sports administration building

Scale 1:25

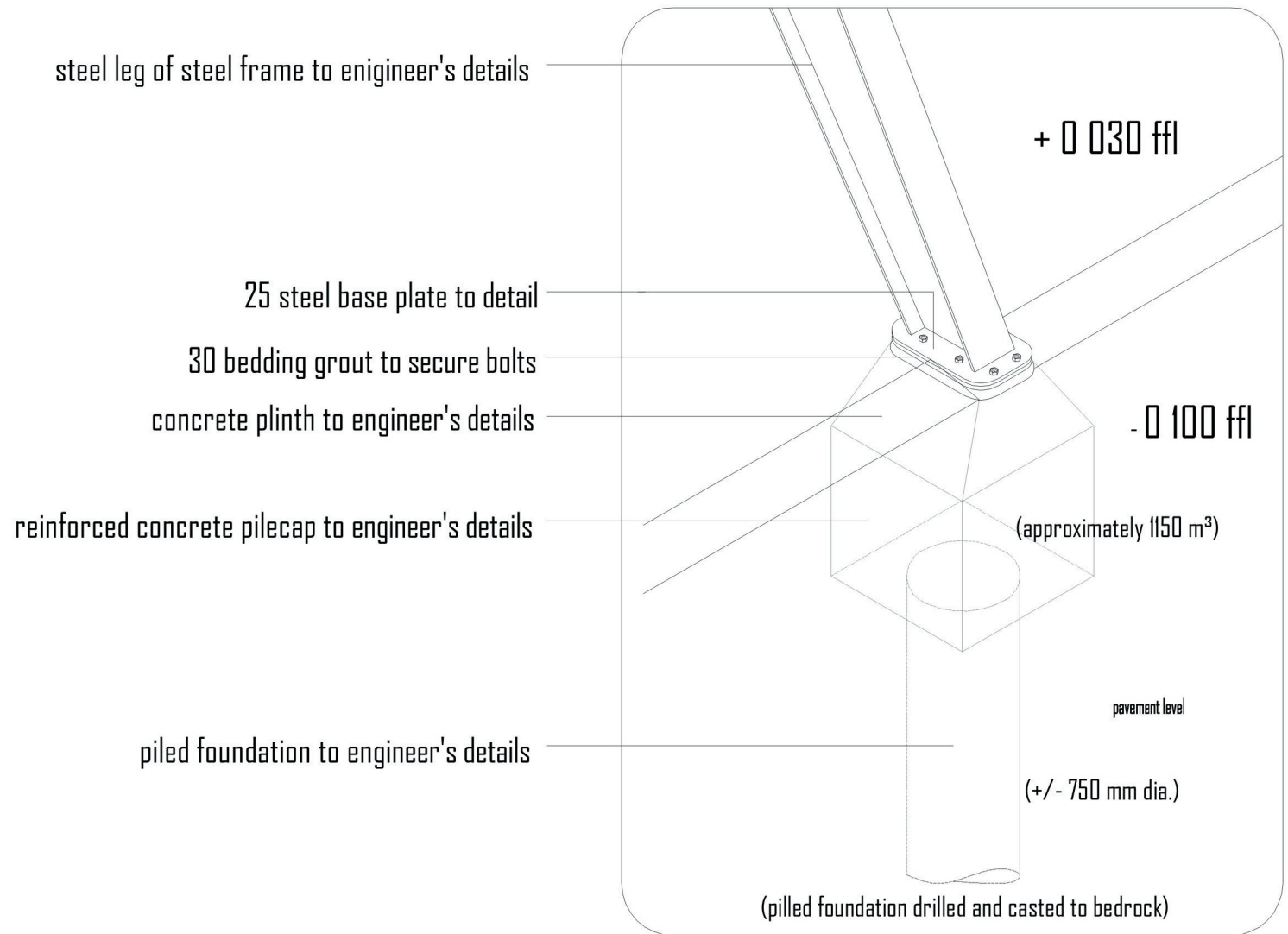


Detail of pile foundation

November 2005

FACILITIES FOR THE DEVELOPMENT OF SPORT IN CONJUNCTION WITH THE 2010 SOCCER WORLD CUP : sports administration building

Scale 1:20

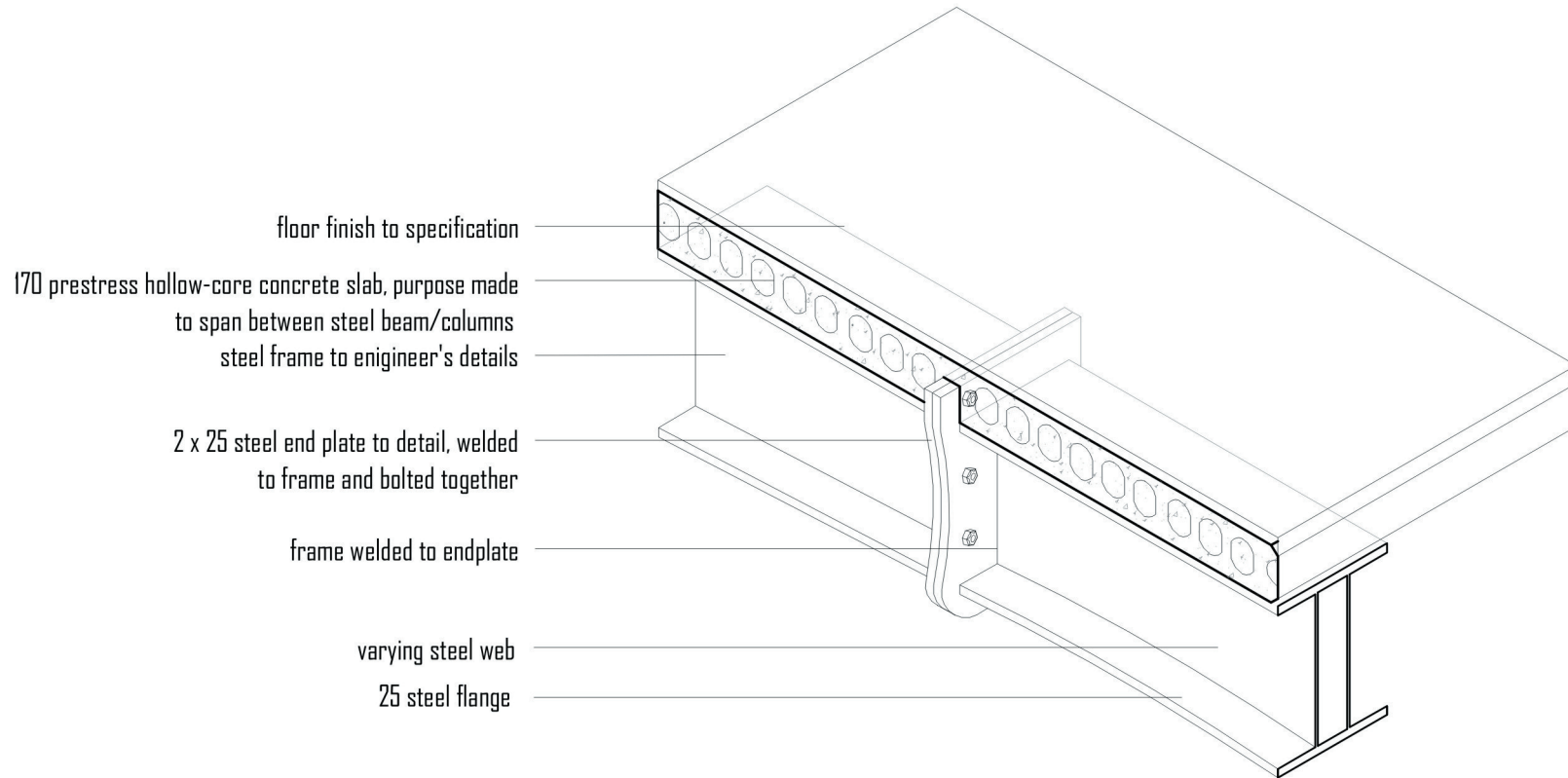


Isometric detail of steel column foundation

Scale 1:20

November 2005

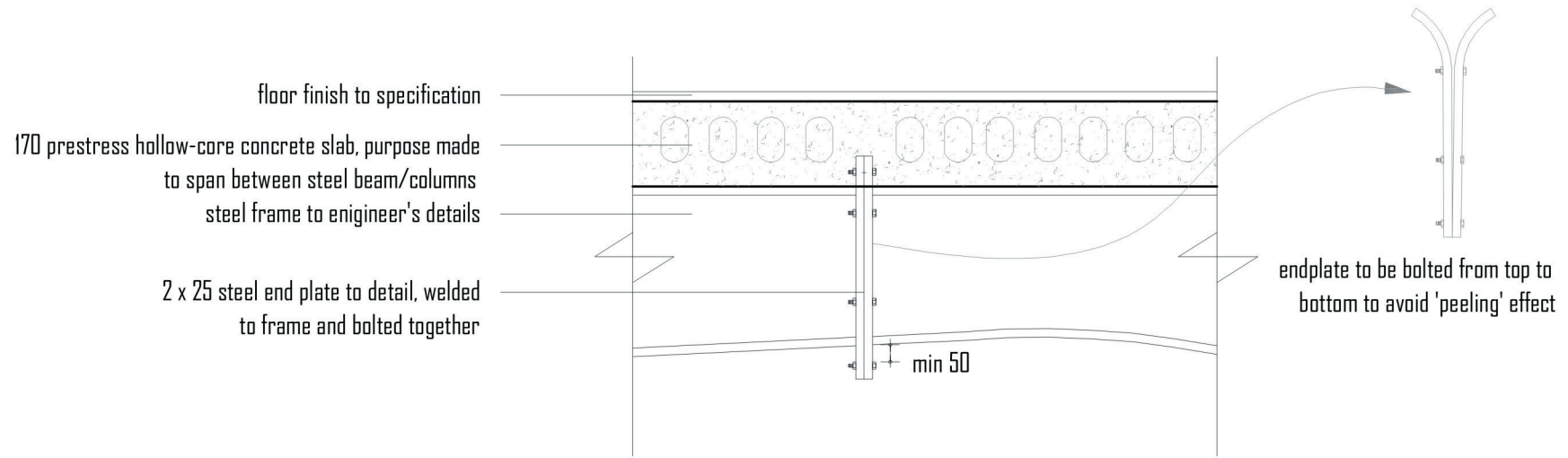
FACILITIES FOR THE DEVELOPMENT OF SPORT IN CONJUNCTION WITH THE 2010 SOCCER WORLD CUP : sports administration building



Isometric detail of endplate

November 2005

FACILITIES FOR THE DEVELOPMENT OF SPORT IN CONJUNCTION WITH THE 2010 SOCCER WORLD CUP : sports administration building

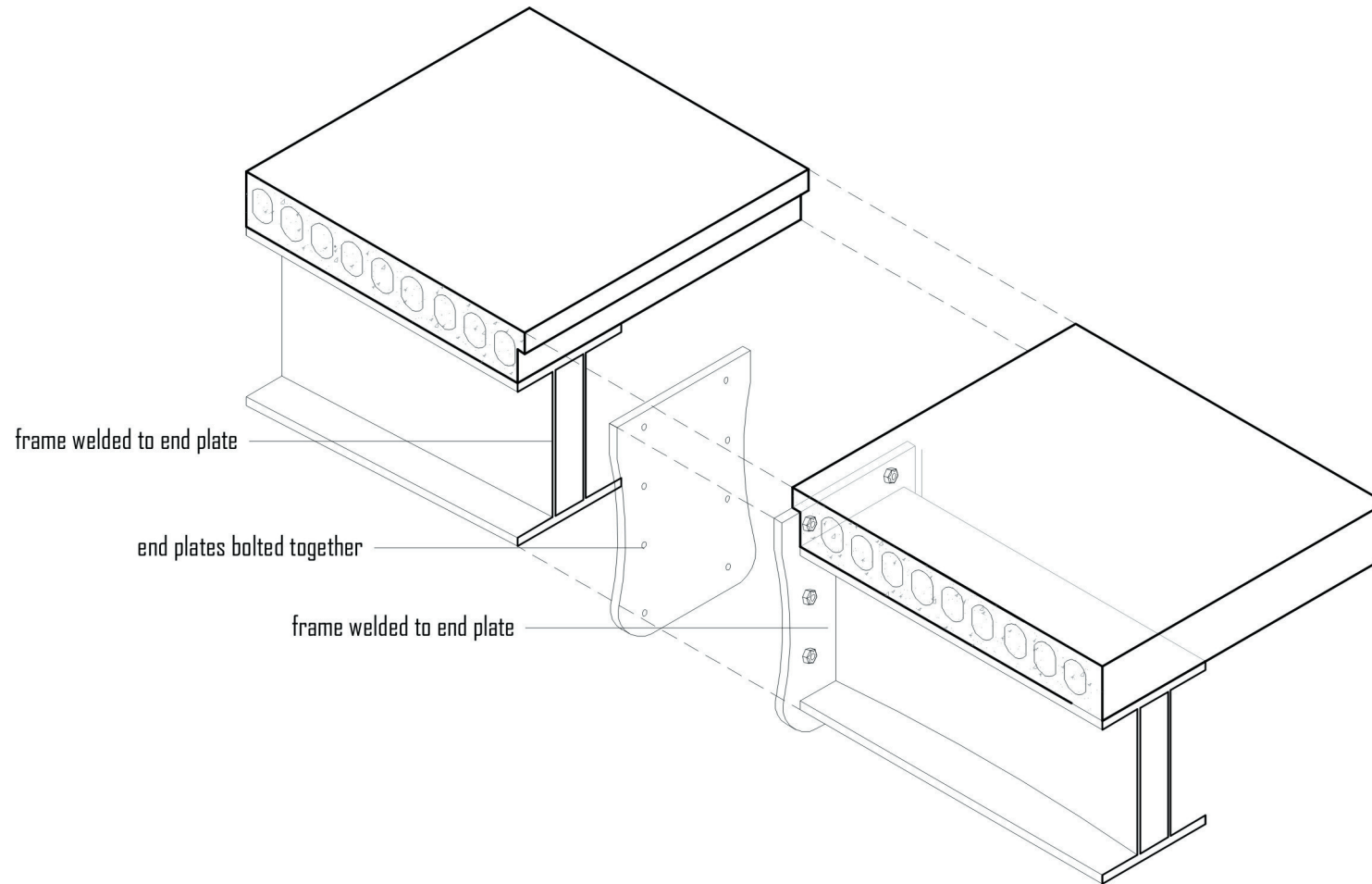


Elevation of end plate

Elevation of end plates

November 2005

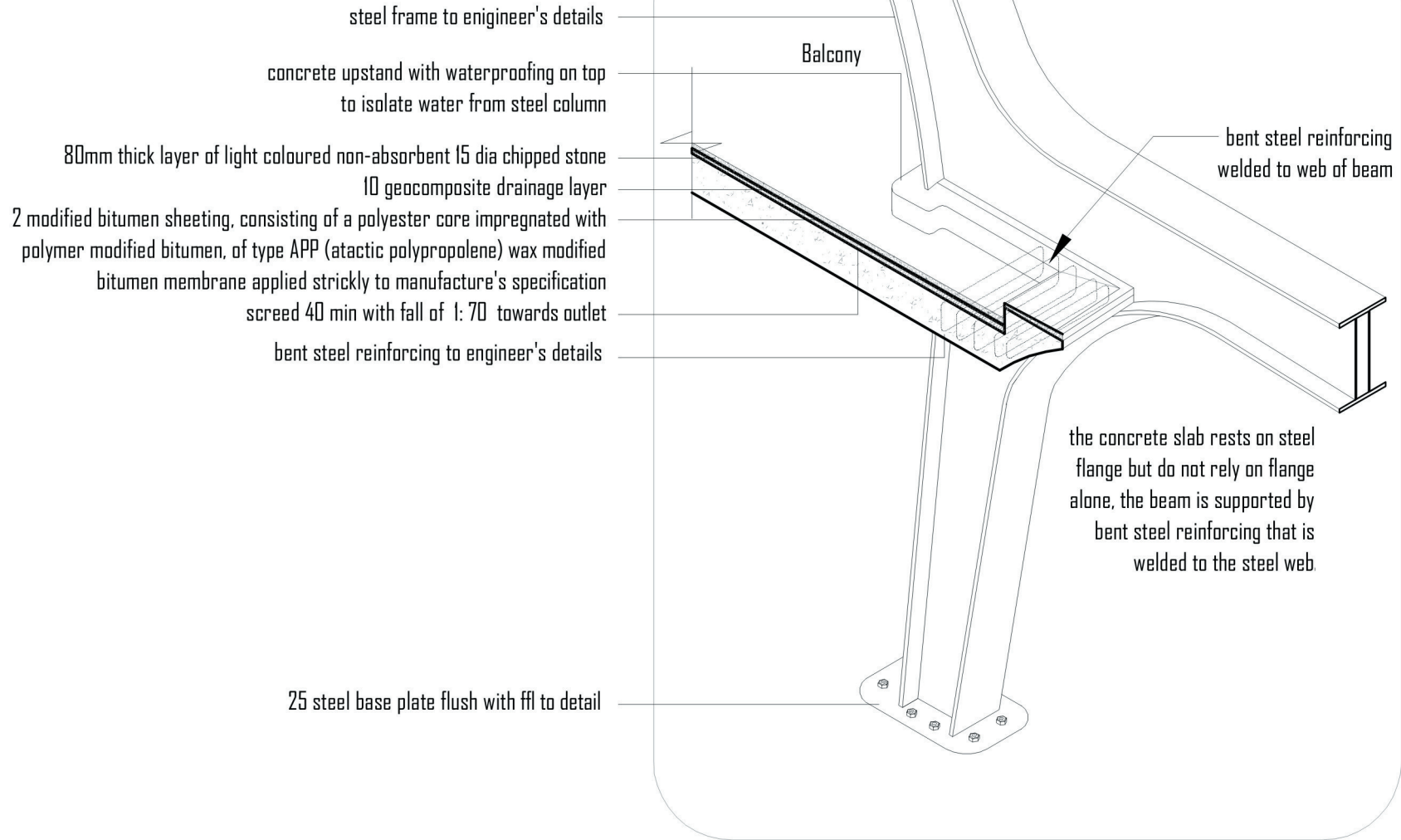
FACILITIES FOR THE DEVELOPMENT OF SPORT IN CONJUNCTION WITH THE 2010 SOCCER WORLD CUP: sports administration building



Exploded view showing end plate connection

November 2005

FACILITIES FOR THE DEVELOPMENT OF SPORT IN CONJUNCTION WITH THE 2010 SOCCER WORLD CUP : sports administration building



Isometric sketch of balcony edge and column connection

Scale 1:20

November 2005

FACILITIES FOR THE DEVELOPMENT OF SPORT IN CONJUNCTION WITH THE 2010 SOCCER WORLD CUP : sports administration building

