



Figure 4.5: Magaliesberg mountain range partially surrounding Rustenburg area (North West Ecoforum, 2002).



Figure 4.6: Magaliesberg mountain range partially surrounding Rustenburg area (North West Ecoforum, 2002).

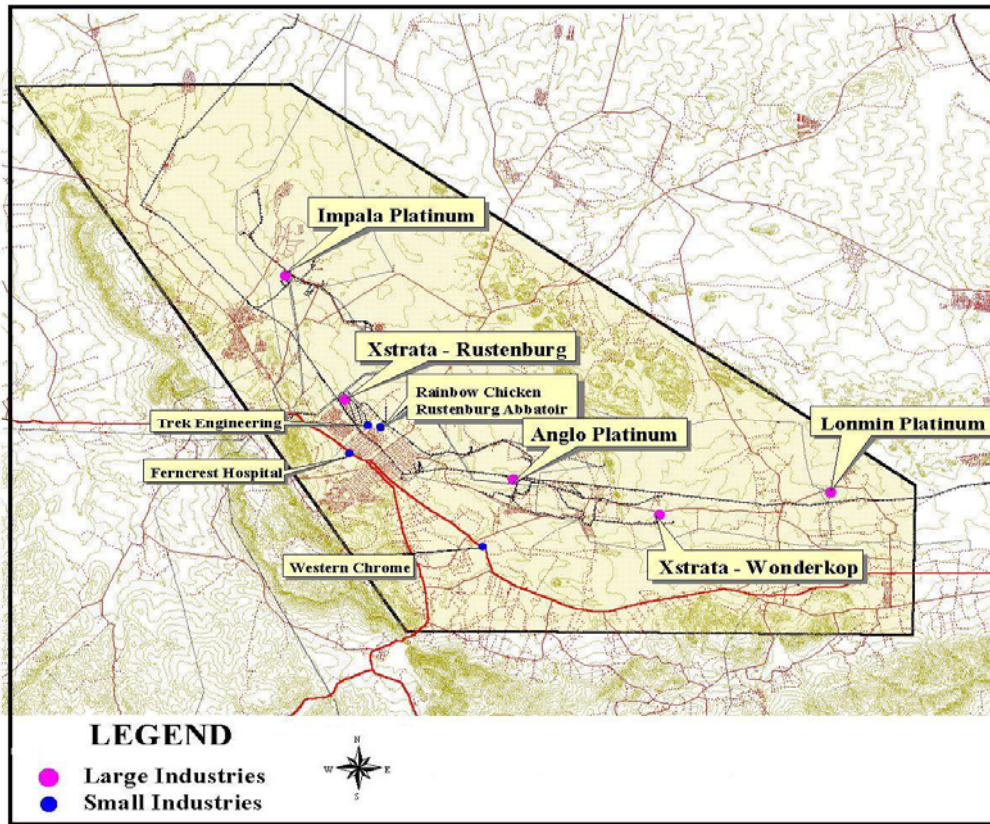


Figure 4.7: Location of industries (Pulles *et al.*, 2001).



Figure 4.8: An example of point emissions (North West Ecoforum, 2002).



Figure 4.9: An example of an area source (tailings dam) (North West Ecoforum, 2002).

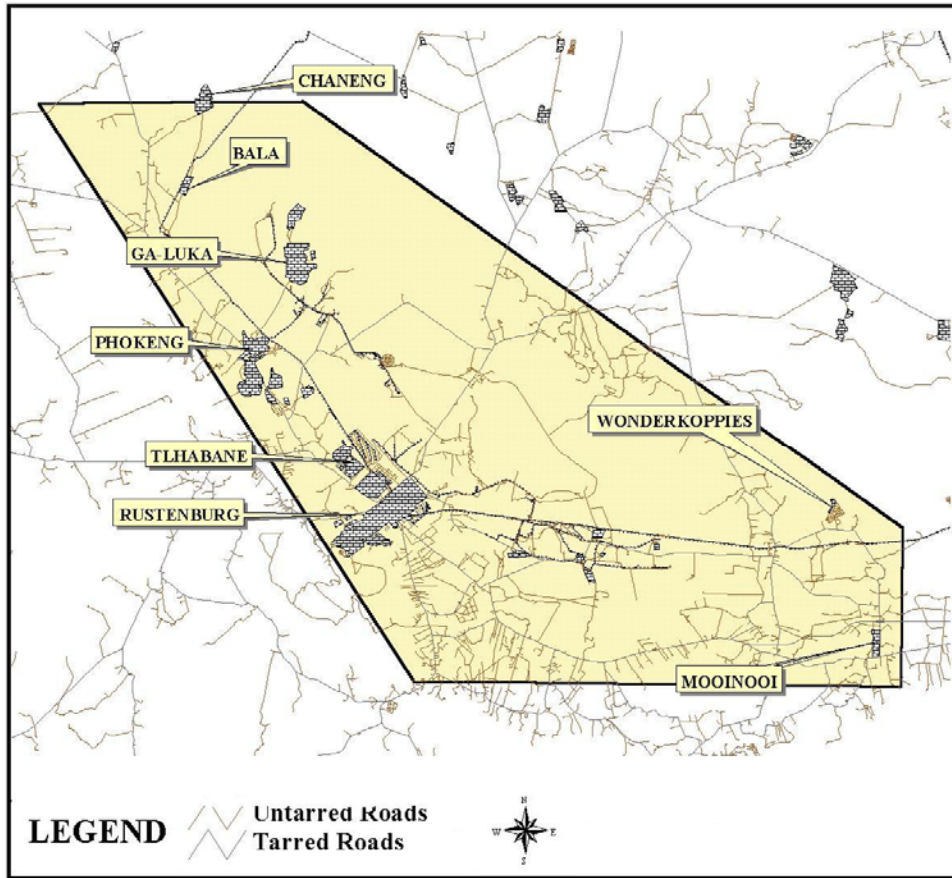


Figure 4.10: Location of tarred and untarred roads (Pulles *et al.*, 2001).



Figure 4.11: An example of burning tyres (North West Ecoforum, 2002).



Figure 4.12: An example of burning tyres (North West Ecoforum, 2002).



Figure 4.13: Example of Smelter emissions (black part of cloud is particulate emissions) (North West Ecoforum, 2002).



Figure 4.14: Example of Smelter emissions (North West Ecoforum, 2002).



Figure 4.15: Example of Smelter emissions (North West Ecoforum, 2002).



Figure 4.16: Example of Smelter emissions (North West Ecoforum, 2002).



Figure 4.17 An example of particulate emissions inside a Smelter (furnace and converter building) (Impala Platinum, 2001c)

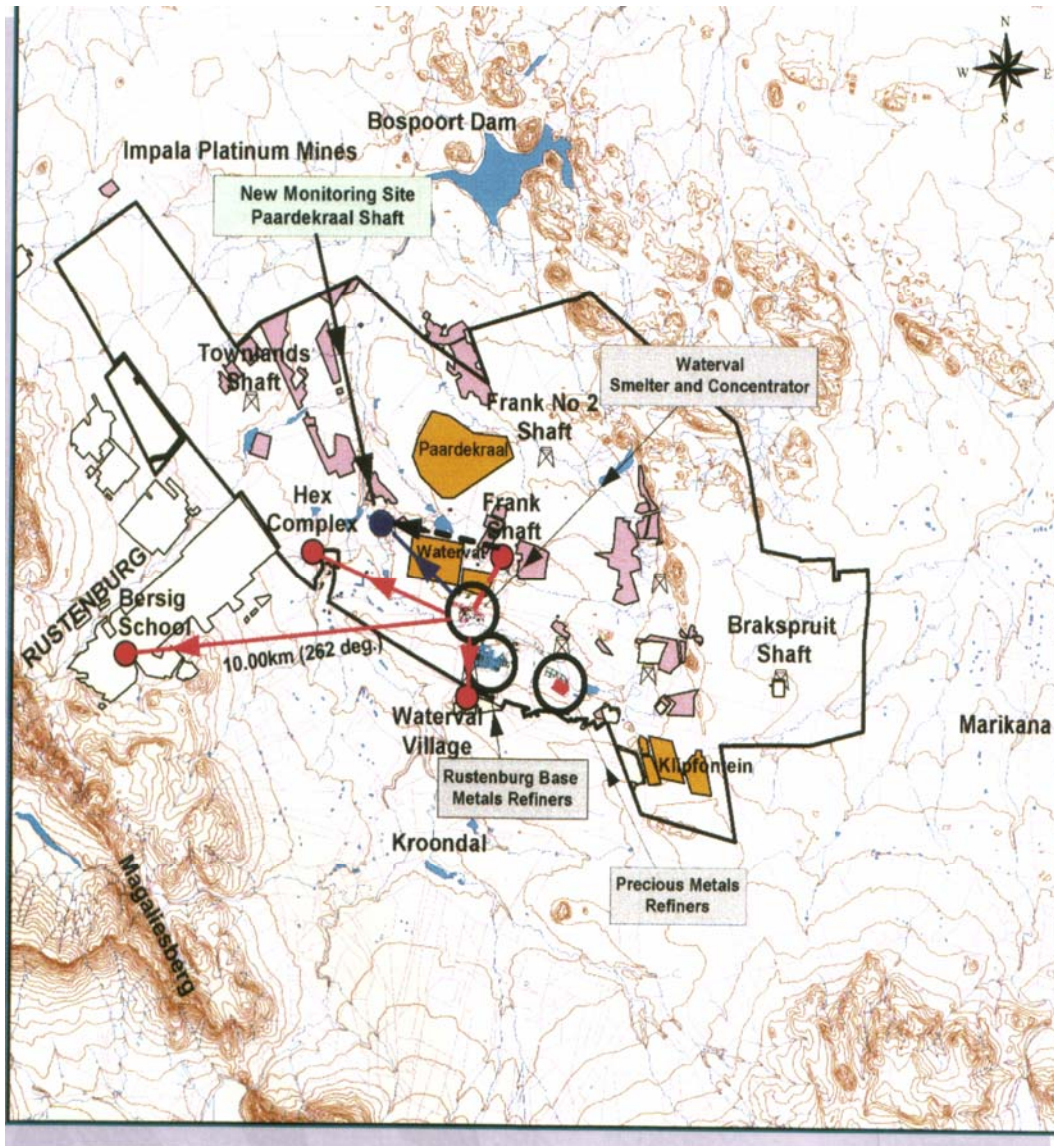


Figure 5.1: Waterval Smelter and its surrounding area (Anglo Platinum, 2001a).

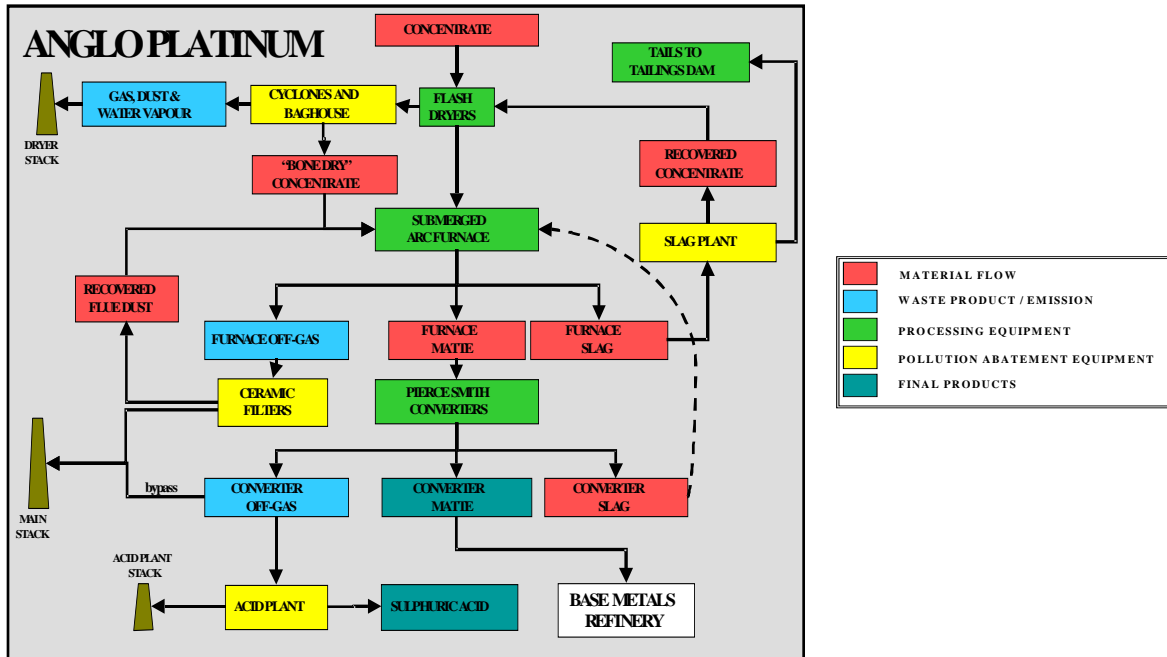


Figure 5.2: Schematic illustration of the Anglo Platinum smelter operations (Pulles *et al.*, 2001).



Figure 5.3 Example of a Furnace (Impala Platinum, 2001c).

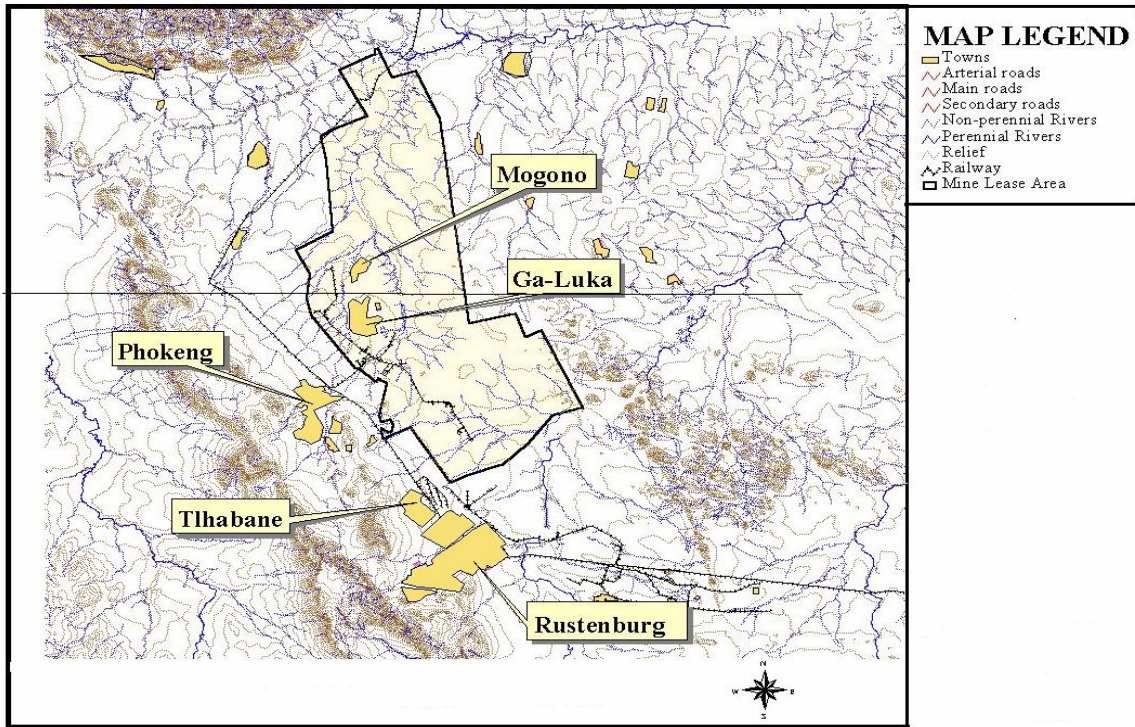


Figure 5.11: General locality plan for the Impala Platinum mine lease area (Pulles *et al.*, 2000).

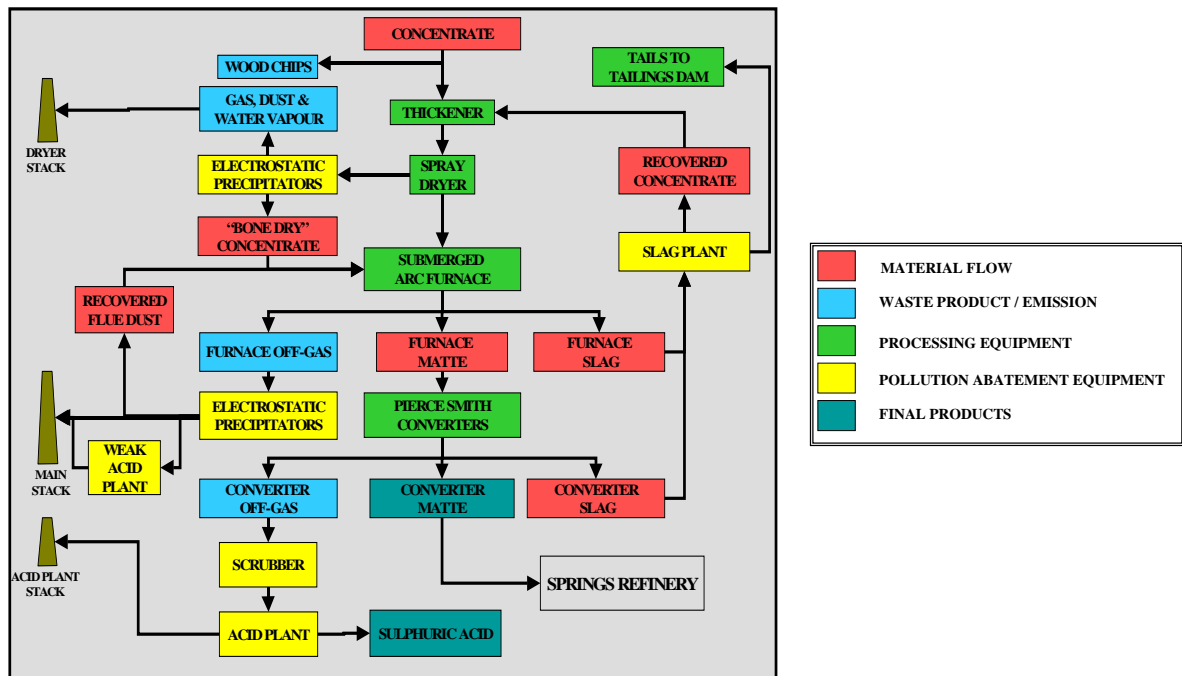


Figure 5.12: Smelter Plant flow diagram for the Impala Platinum Smelter (Pulles *et al.*, 2001).

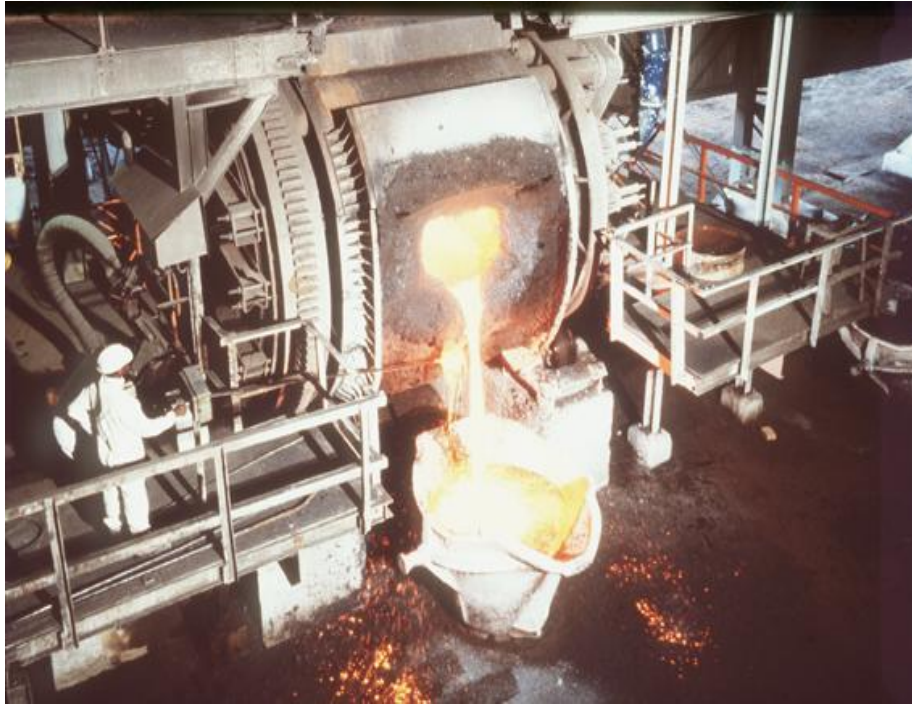


Figure 5.13 Example of a Furnace (Impala Platinum, 2001c).



Figure 5.14 Example of a Converter (Impala Platinum, 2001c).

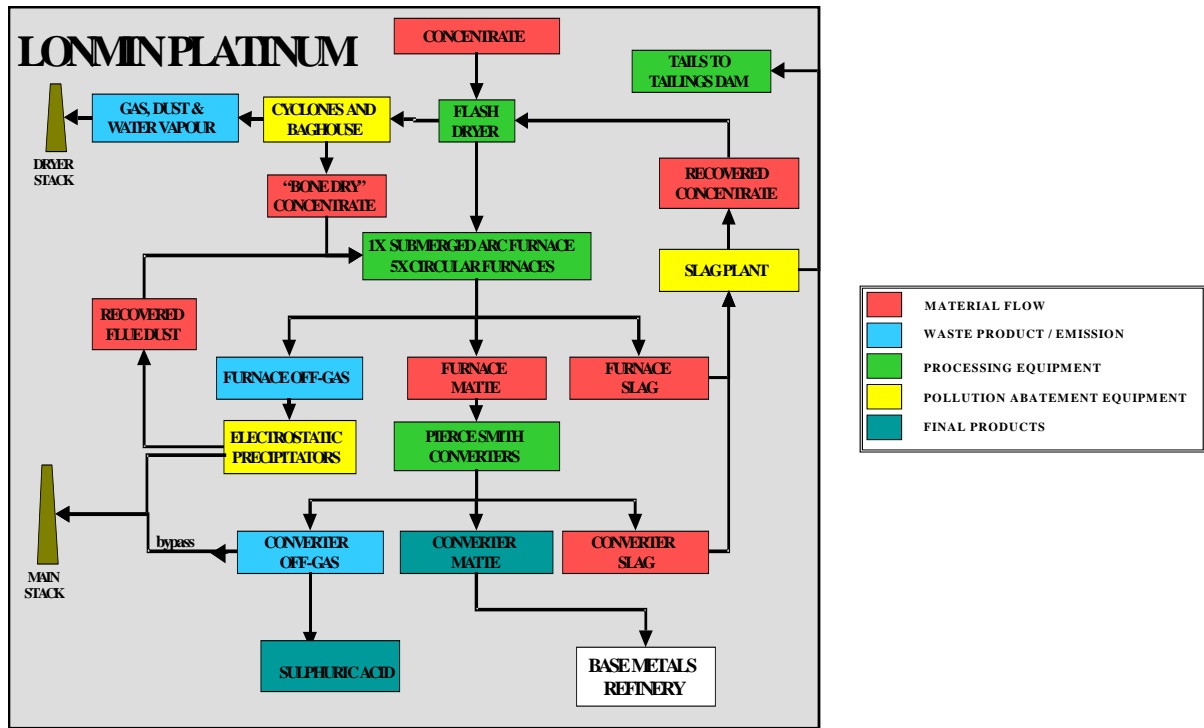


Figure 5.19: Schematic illustration of the Lonmin Platinum Smelter operations (Pulles et al., 2000).