

[8]



[chapter 8] technical approach

While the approach to construction abides by the concept of 'Restore, Integrate and Intervene', and each section has a slightly different approach to new construction, certain general principles apply to the redevelopment of the whole building:

General

All new work must be easily identifiable

Throughout the Turbine Hall the structural integrity of the old building must be preserved; infill may be removed where appropriate but the existing concrete structural frame must be preserved

It must be ensured that the legibility of the existing envelope remains

Strictly no imitation of existing construction

Restore

New elements to touch the old lightly

Emphasis on the existing

Reuse restored elements from deconstructed parts of the building

Integrate

Pull away from and expose the existing structure

Work within the existing envelope

New work draws on memory of the old

Emphasis on the interplay between the new and the old

Intervene

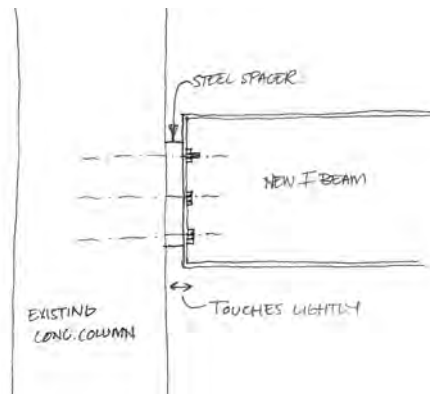
Pop out of existing building

Materials contrast with the existing

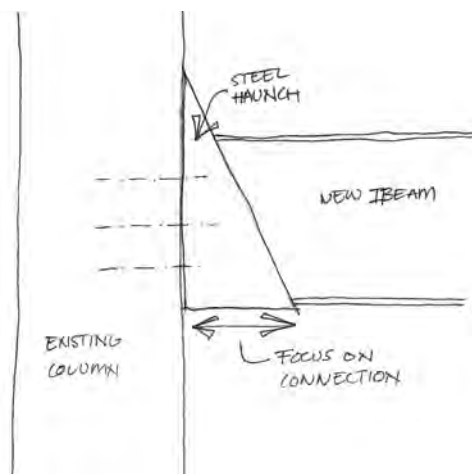
Emphasis on the new

How new structural steel connects with the existing concrete structure varies in each third of the building and is a good example of the different tectonic approach for the different sections.

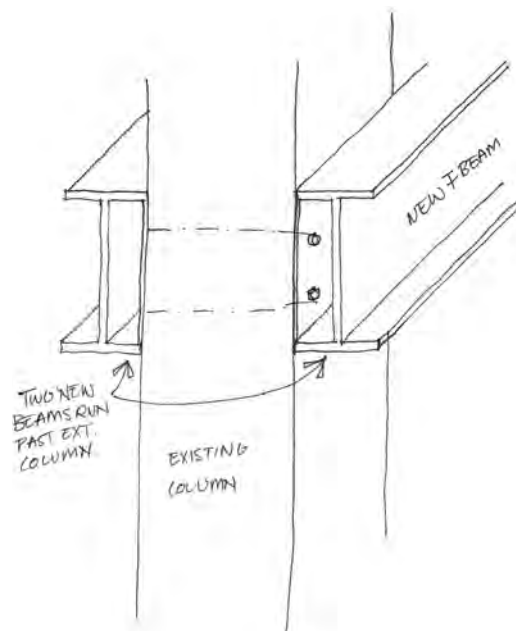
[Fig. 161] Restore - The new steel touches the existing concrete lightly, a steel spacer separates the two making it seem like they do not even touch



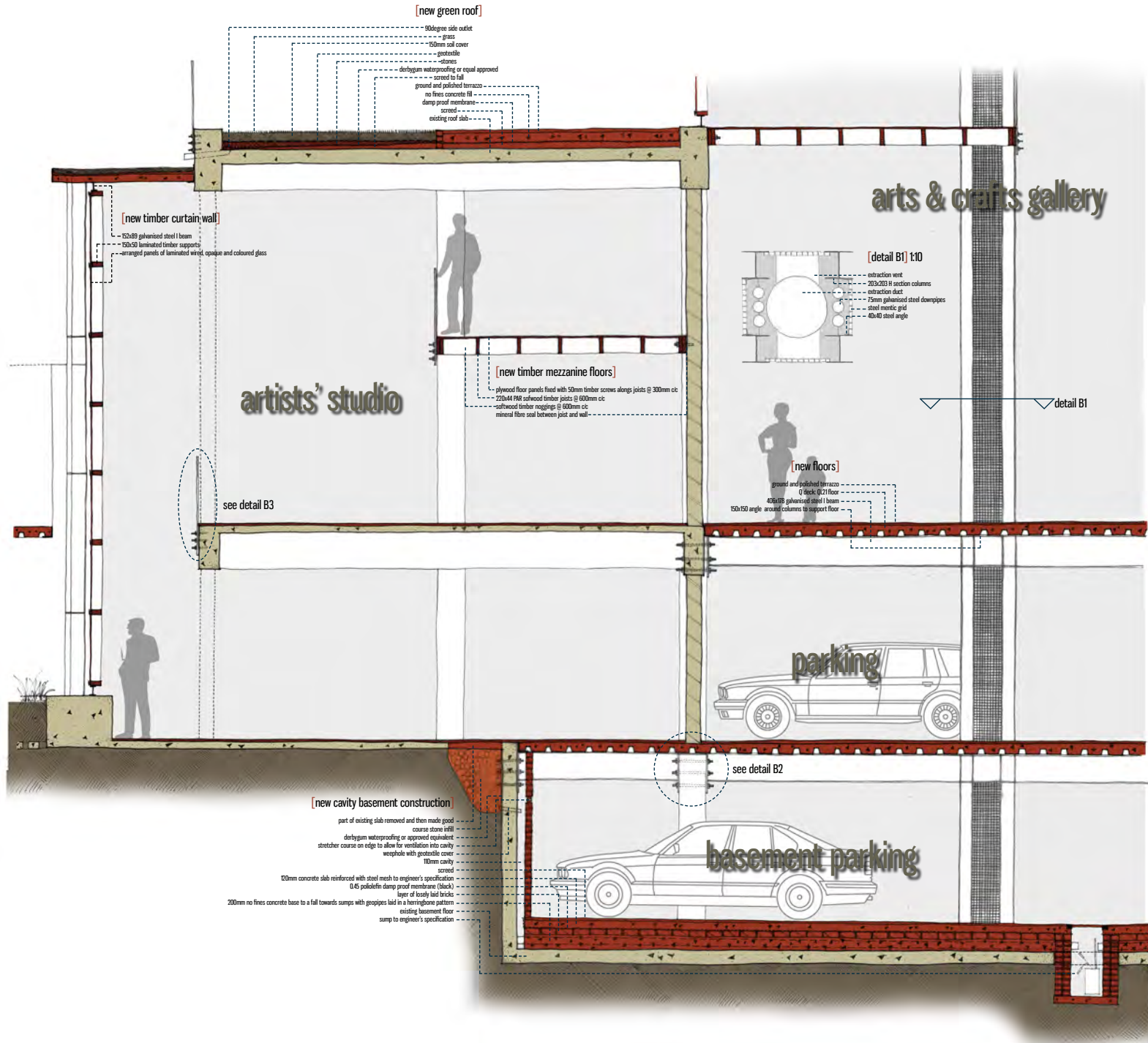
[Fig. 162] Integrate - A steel haunch is fixed to the existing column to support the new beam, this emphasises how the two are connected



[Fig. 163] Intervene - In this instance two beams are used and run past the column making it seem like they are not even directly connected

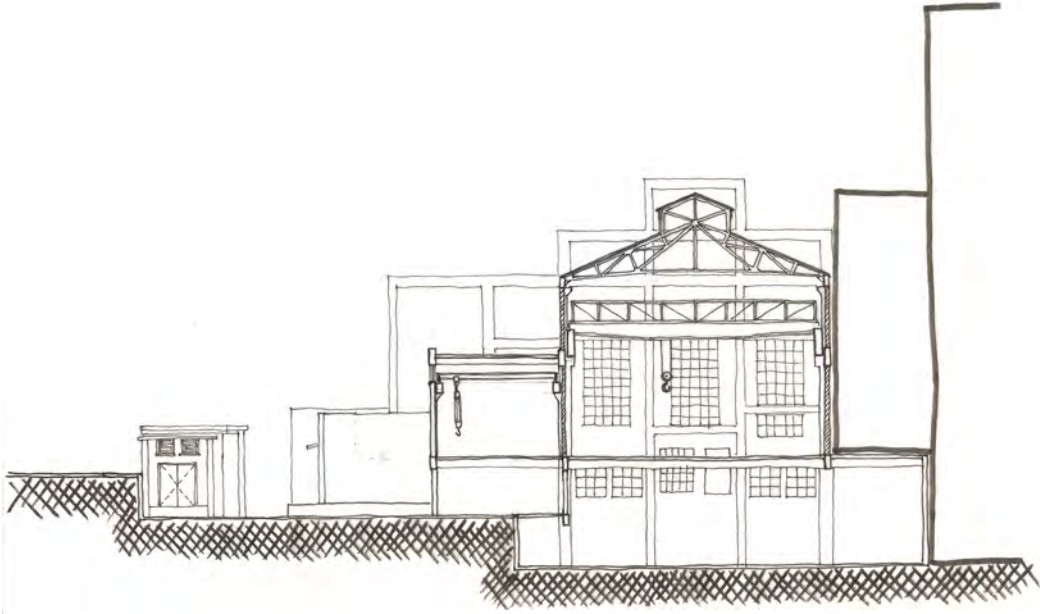


[intervene] arts



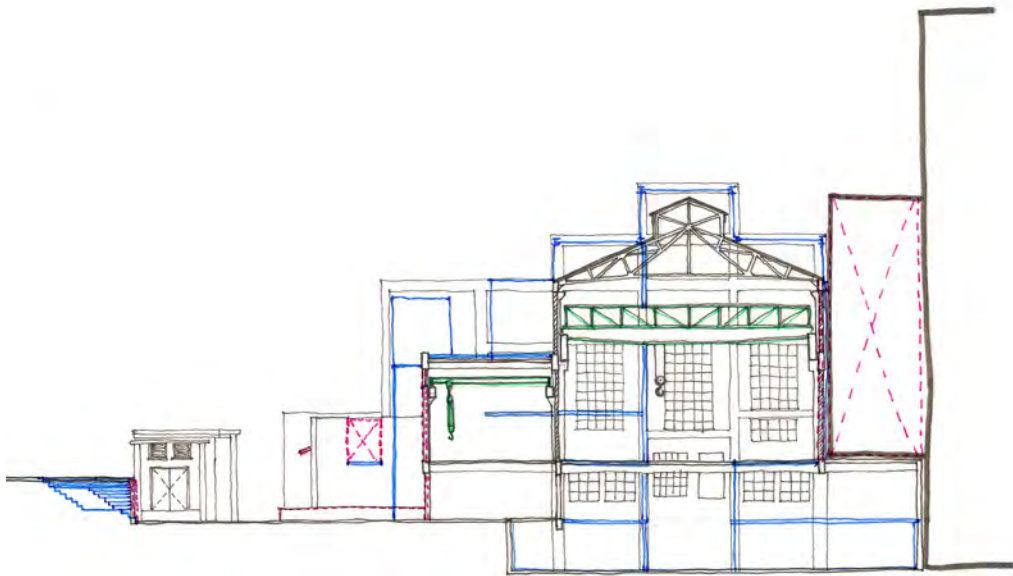
[D1-D1] section showing typical new construction

[Fig. 164] 1:20 Technical section



[Fig. 165] D1 - D1 section through existing building

[existing section]



[Fig. 166] D1 - D1 section showing new and demolished work

blue [new] red [demolished]