

[6]

[chapter 6] context & site

Context surrounding this thesis at a larger urban scale has been explored and responded to by The Vision For Pretoria West and by the Development Framework for the Old Power Plant (see chapter 1), this chapter will then explore the immediate context created by the development framework and explore factors that are directly relevant to the development of The Old Turbine Hall.

As revealed by the methodology of phenomenology understanding the context of a place requires more than a simple analysis of objects within a landscape. One needs to fully understand the essence of a place before you can create architecture within it, to understand the essence of a place one needs to analyse concrete and intangible phenomena and differentiate between natural and man made elements, to understand what makes a location a place, the spacial qualities and character also need to be scrutinised and the history of the place fully understood

[Fig. 90] Old aerial photo taken of the power plant in the 1940's

[Fig. 91] current aerial photograph highlighting historical fabric (over 60years old) and demolished fabric





historical fabric

demolished conveyor

demolished cooling tower

[present day]

[Fig. 93]





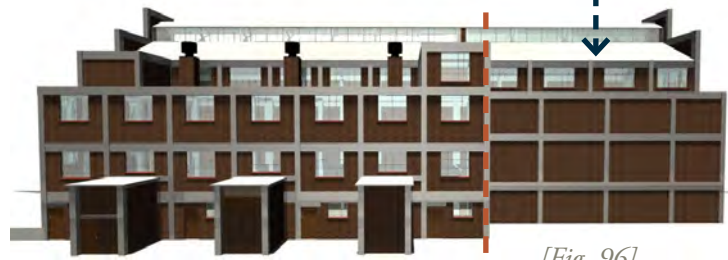
[Fig. 94]

1924

1928

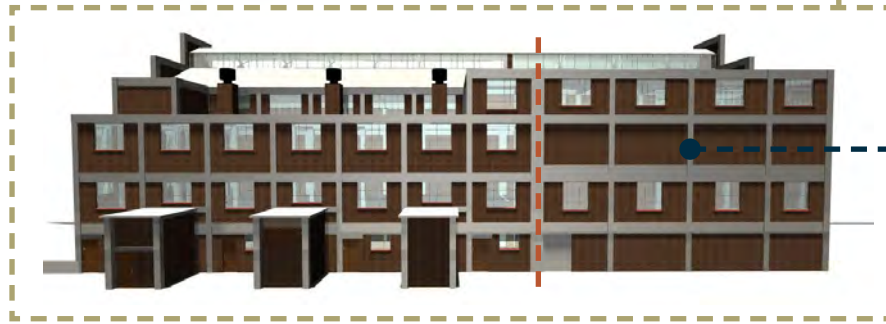


[Fig. 95]



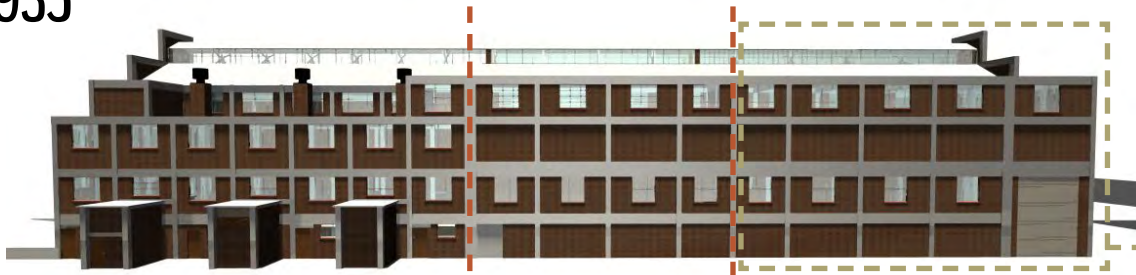
[Fig. 96]

1932



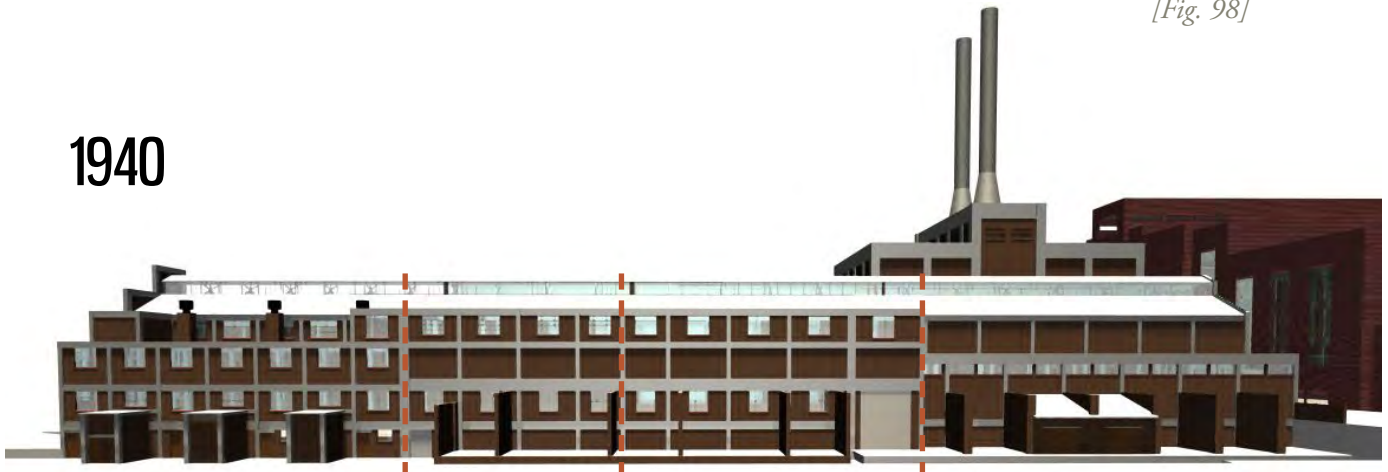
[Fig. 97]

1935



[Fig. 98]

1940

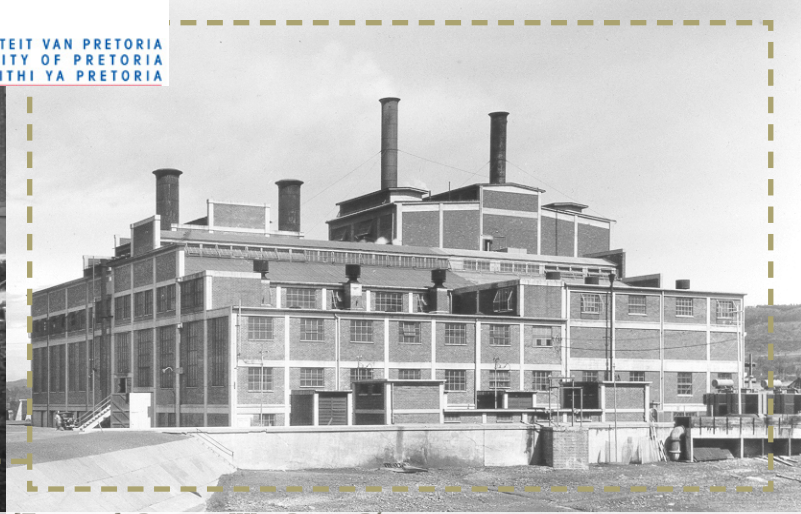


[Fig. 99]

[growth of the old turbine hall over the years]



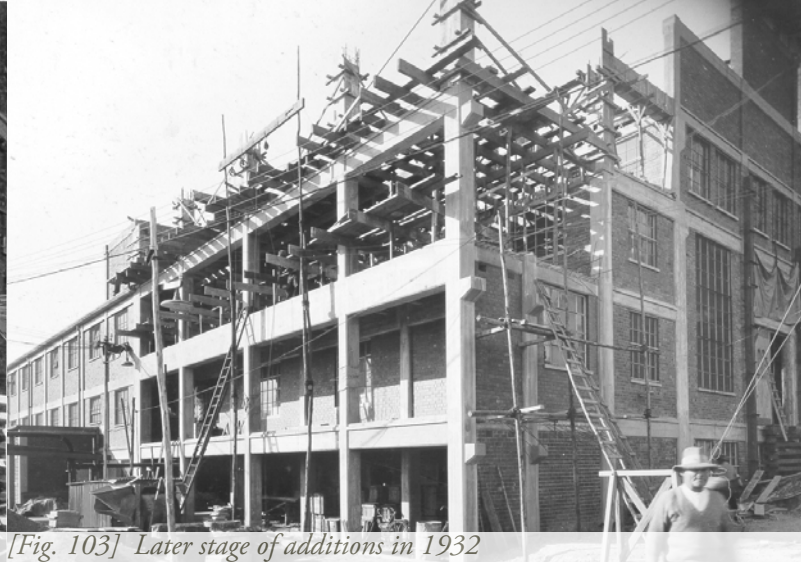
[Fig. 100] Foundations for turbine hall extension (1928)



[Fig. 101] Pretoria West Power Plant in 1932



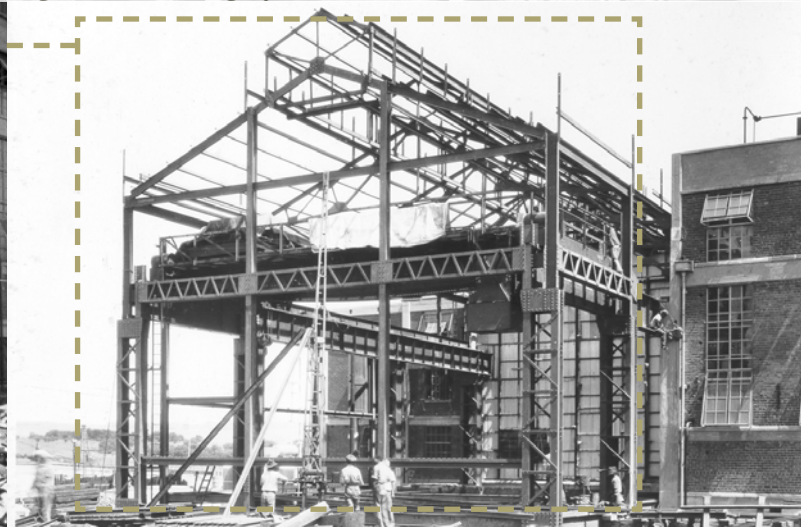
[Fig. 102] New addition to the turbine hall in 1932



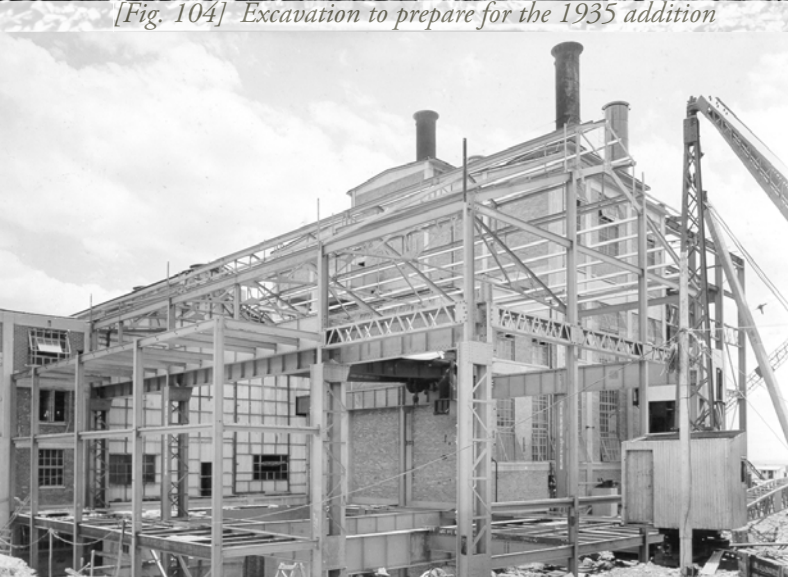
[Fig. 103] Later stage of additions in 1932



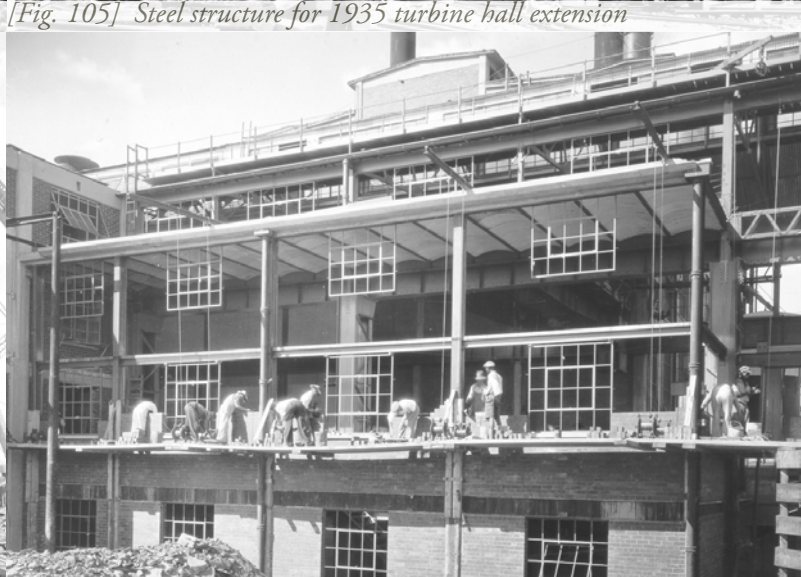
[Fig. 104] Excavation to prepare for the 1935 addition



[Fig. 105] Steel structure for 1935 turbine hall extension



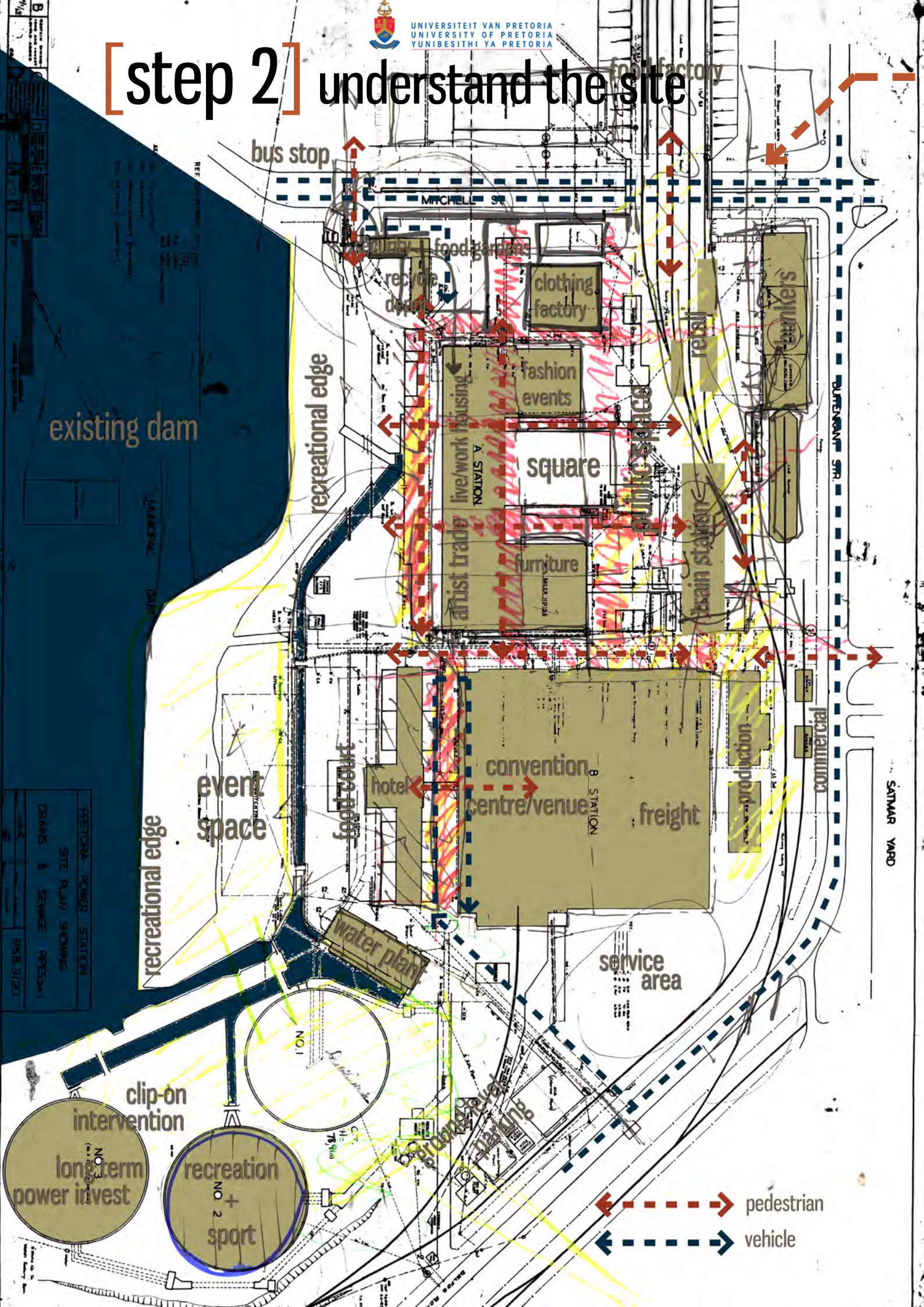
[Fig. 106] Steel structure for 1935 turbine hall extension



[Fig. 107] Installation of windows to the 1935 extension



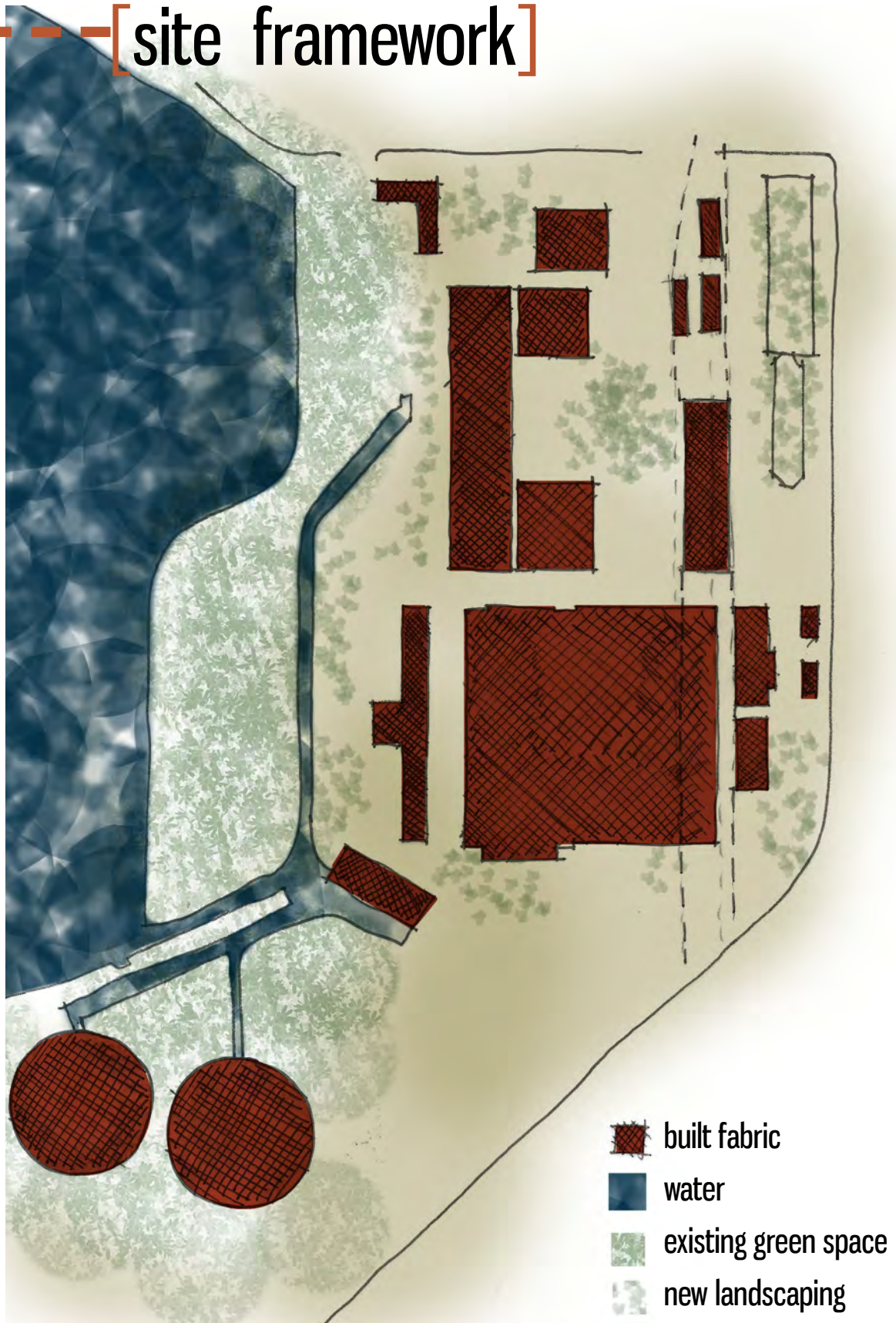
[step 2] understand the site



pedestrian
 vehicle

PRETORIA POWER STATION
 SITE PLAN SHOWING
 DRAINS & SERVICE PRETSA
 P/B 5/20

[site framework]



[natural & man made phenomena]



[natural phenomena]

[Fig. 108] Natural phenomena





[man made phenomena]

[Fig. 109] Man made phenomena





[spaces]

[Fig. 110] Spaces





[existing character]

[Fig. 111] existing character

KENNISGEWING
GEEN TOEGANG VIR
ONGEMAGTIGDE PERSONE

NOTICE
NO ADMITTANCE TO
UNAUTHORISED PERSONS





[character proposed by framework]

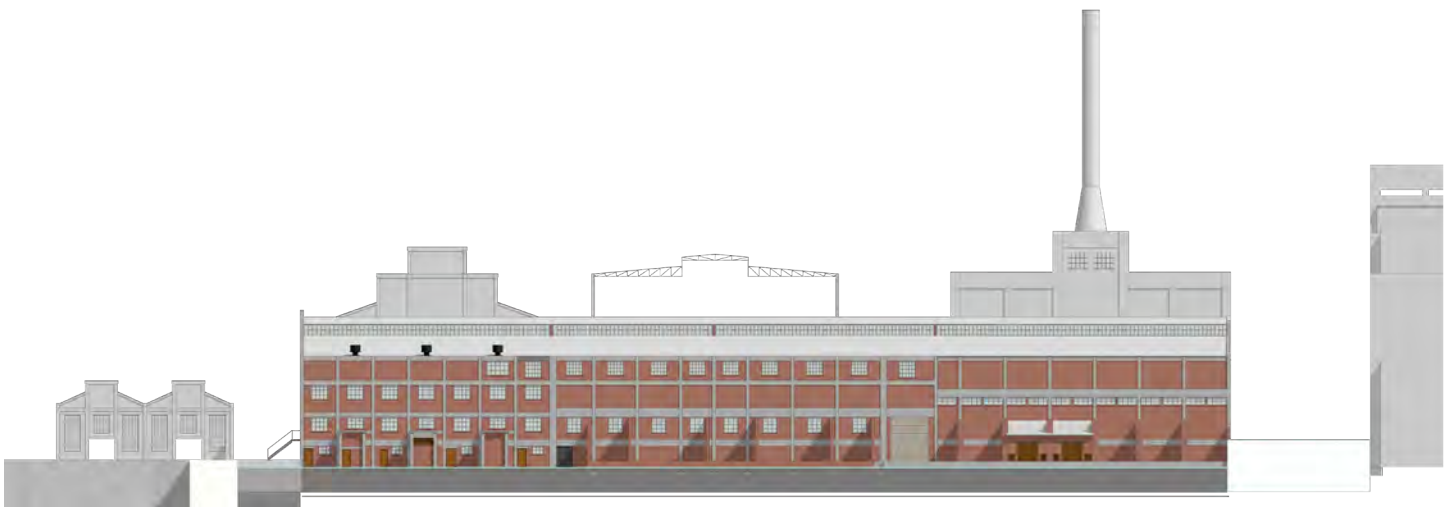
[Fig. 112] Character proposed by framework



UNIVERSITEIT VAN PRETORIA
UNIVERSITY OF PRETORIA
YUNIBESITHI YA PRETORIA



[step 3] understand the building



[Fig. 113] West Elevation



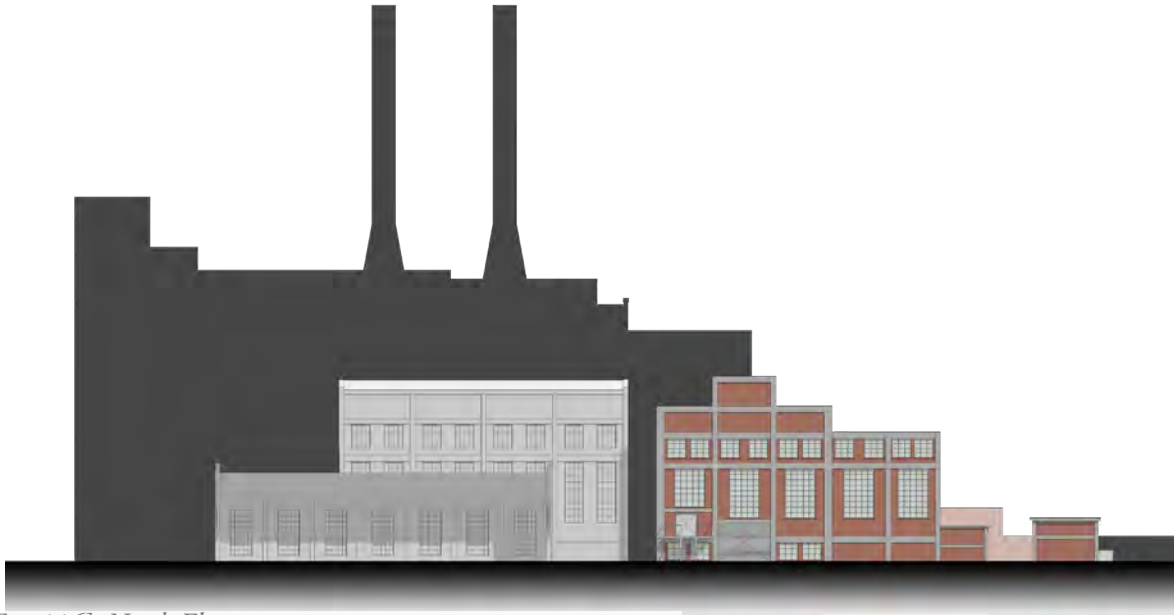
[west elevation]



[Fig. 114]



[Fig. 115]

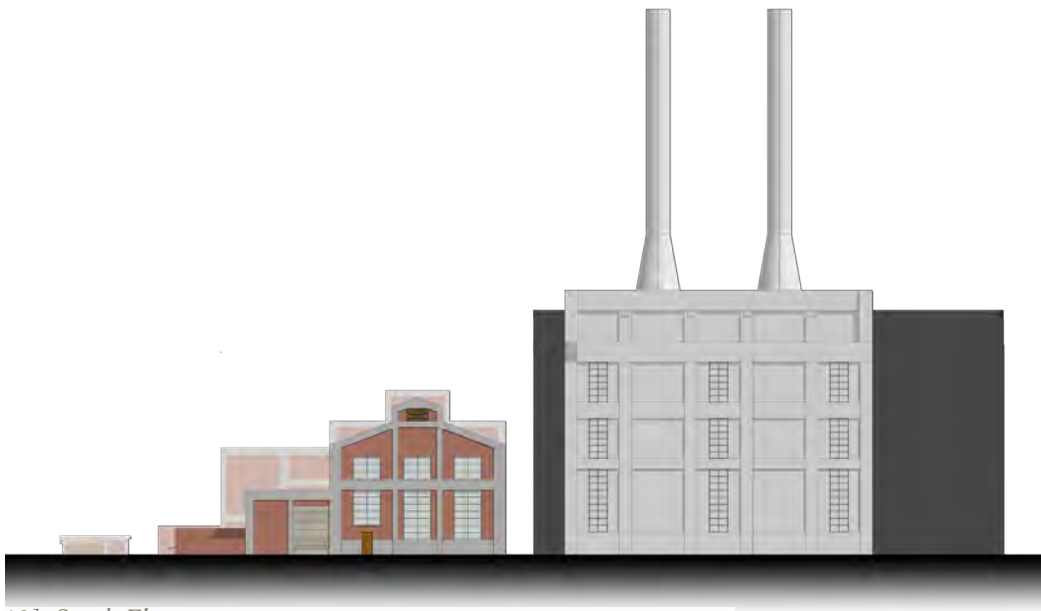


[Fig. 116] North Elevation



[north elevation]

[Fig. 117]



[Fig. 118] South Elevation



[south elevation]

[Fig. 119]



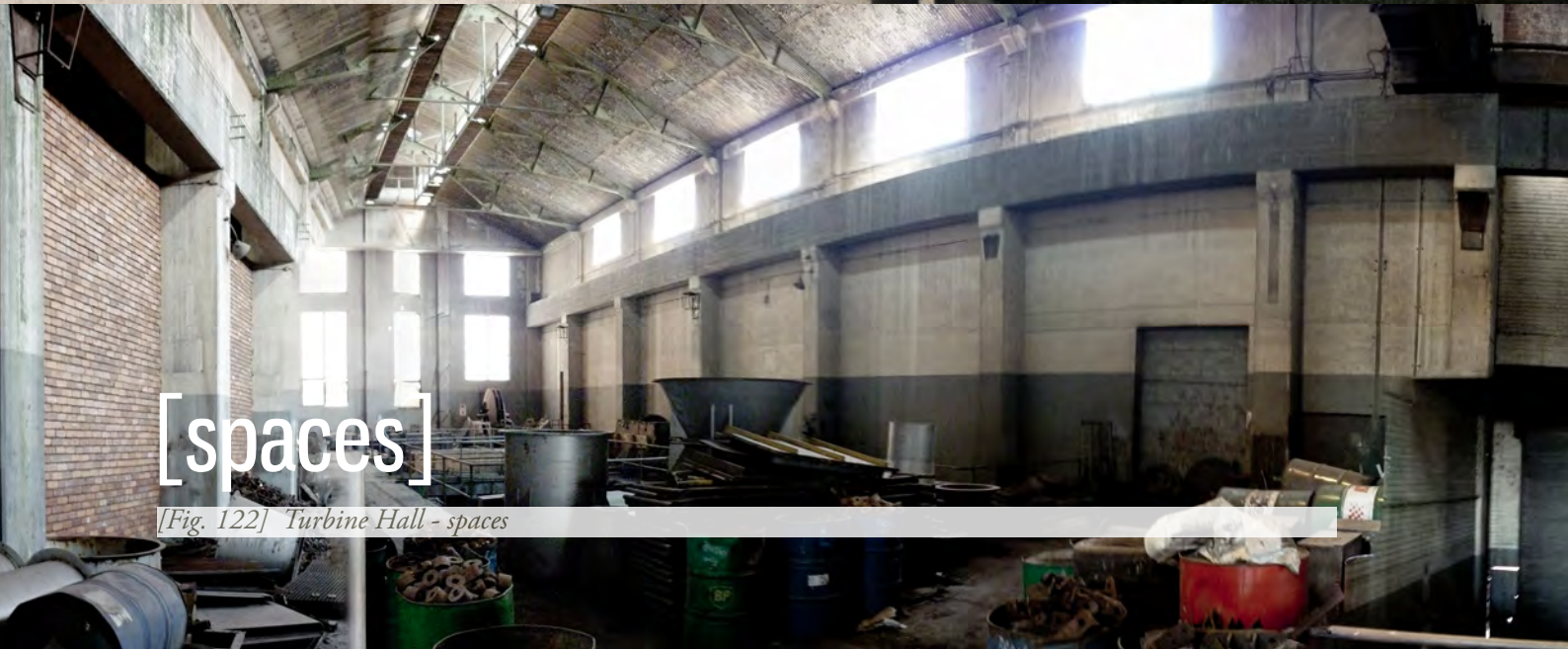
[natural phenomena]

[Fig. 120] Turbine Hall - natural phenomena



[man made phenomena]

[Fig. 121] Turbine Hall - man made phenomena



[spaces]

[Fig. 122] Turbine Hall - spaces



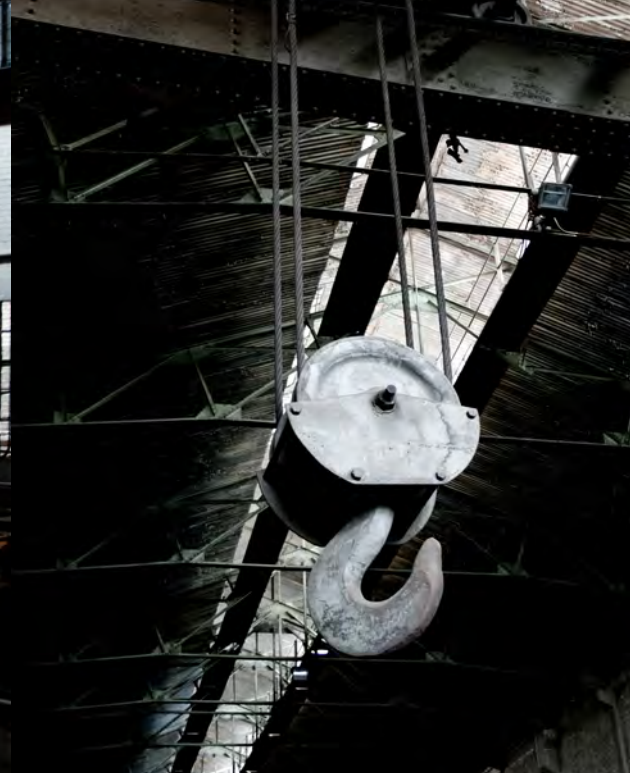
UNIVERSITEIT VAN PRETORIA
UNIVERSITY OF PRETORIA
YUNIBESITHI YA PRETORIA

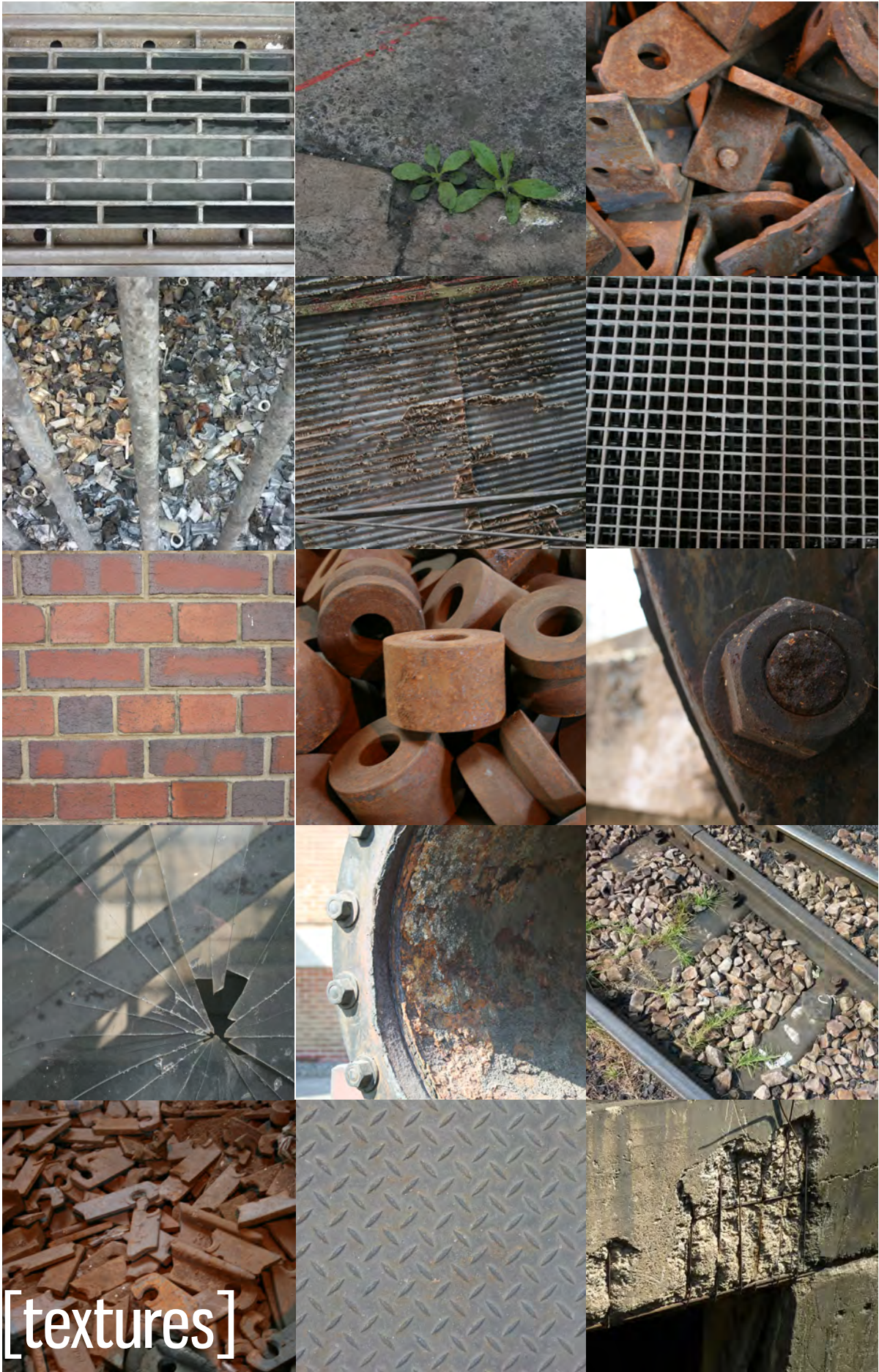




[character]

[Fig. 123] Turbine Hall - character





[textures]

[Fig. 124] Turbine Hall - textures

