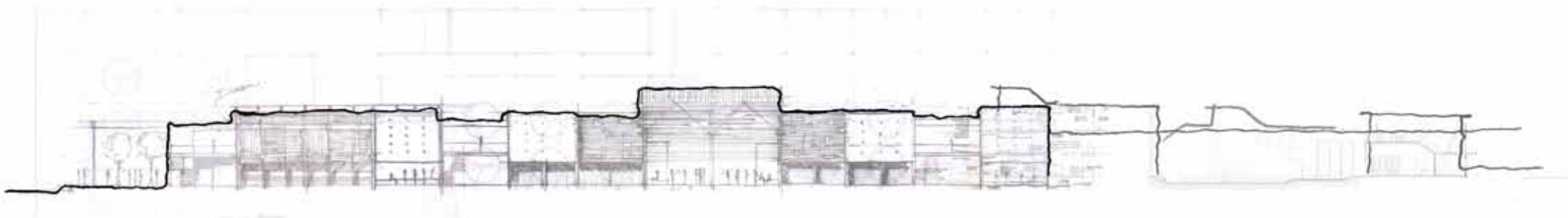


PUBLIC INFORMATION RESOURCE CENTRE

knowledge transference_connectivity_community



K. Steyn

If there is one thing that I've learned during this year, it is that you'll never know the outcome of your decision unless you follow through.

Acknowledgements

Public information resource centre

Information transference_connectivity_community

K. SteynMentor: G. White and A. Barker

Study leader: G. White

Submitted in fulfillment of part of the requirements for the degree Magister in Architecture (Professional)
in the faculty of Engineering, Built Environment and Information Technology, University of Pretoria, South
Africa

November 2010

I would like to express my sincere gratitude and appreciation to first of all my parents. Both of whom contributed in their own unique manner; my dad for being there every step of the way, his constant support, un-edited advice and somewhat militaristic method of encouragement. My mother: for her calming words, positive attitude and for just being het light hearted humoristic self. Gary White, my mentor and study leader, for his urban and architectural contribution, belief, and who taught me to just relax and enjoy. Arthur Barker, for always making time to help a student, always being there when we needed him, even if it was just for a pleasant conversation, and for having faith in us, even when we had none in ourselves. Lastly I would like to thank all my architecture friends, whom made every late night a pleasure, every early morning a joy, and for always having time to help one another.

Abstract

The project is situated within the underdeveloped periphery of Mamelodi. It addresses urban issues of connectivity at a physical, spatial and educational level, as a setting for the proposed architectural intervention. The thesis explores a number of architectural issues, mainly the design of a multi-functional information and resource centre to facilitate a series of public, civic and economic services. These issues are formed through programmes which concern information and knowledge provision. Aspects that informed the nature and scope of the intervention include methods of knowledge distribution, the role of the public library as one beyond that of its functional origin and the potential of the building type to serve as a catalyst within a community. Owing to the physical and programmatic context of the building, it needs to offer adaptability, flexibility and eventually change; both in terms of changing information technologies and within an informal trading-dominant society. Pertinent considerations are small scale construction methods that would allow the participation of local contractors, the creation of tectonics and articulation of space with which the community can associate as well as energy saving principles to allow minimal cost.

| | | | |
|------------|---|--|------------|
| 001 | Declaration | CHAPTER FIVE_ context and site | 056 |
| 002 | Acknowledgements | Eerste Fabrieke location: Metropolitan context | 058 |
| 004 | Abstract | Local context | 061 |
| | | History | 062 |
| 05 | Table of content | Existing buildings and structures | 064 |
| | | Analysis | 066 |
| 007 | LIST OF FIGURES | CHAPTER SIX_ urban design framework | 068 |
| 010 | INTRODUCTION | Eerste Fabrieke as Lost space | 069 |
| 012 | Mamelodi in context | Connecting the bigger picture | 070 |
| 013 | Urban scale intervention | Connectivity | 072 |
| 015 | Intervention | The functionalist grid | 075 |
| 016 | Knowledge as catalyst | Determining Hierarchy | 076 |
| 016 | Library as knowledge container | Urban voids | 081 |
| 018 | Building as Symbol in the community | The street as public space | 082 |
| 020 | Providing for informal trade | Integration of the shared street concept | 084 |
| 022 | Research methods and methodology | What is a rural urban experience? | 085 |
| | | Conclusion | 086 |
| 024 | CHAPTER TWO_ Intervention beyond its functional origin | CHAPTER SEVEN_ designing within the framework | 088 |
| 025 | Knowledge transfer | Block plan development_ movement as context | 089 |
| 026 | Building type as a series if schemas | Site Plan development_ an issue of sustainability | 092 |
| 027 | Vessel for transference | Weaving together the community | 093 |
| 033 | Toward a future | Activities arcade_ the street as organiser of space | 098 |
| 034 | Conclusion | Information resource centre_ a series of interconnected solids and voids | 110 |
| 036 | CHAPTER THREE_ understanding African space | Community clinic_ an expansion of community obligation | 124 |
| 037 | Movement as space generator and Feedback system | Live/work housing development _generating required energy | 128 |
| 038 | Invisible urbanism | CHAPTER EIGHT_ technical investigation | 134 |
| 038 | Movement as tool for organisation | Designing for change | 136 |
| 042 | Scale and surroundings | Shading devices as facade articulation and general connections | 138 |
| 044 | Conclusion | Unity through getail | 152 |
| 046 | CHAPTER FOUR_ precedent study | CHAPTER NINE_ finale intervention | 156 |
| 047 | Kariakoo Market | From space to form | 158 |
| 050 | Faraday Market and transport Interchange | Conclusion | 176 |
| 052 | Metro Mall Transport Facility and Traders Market | | |
| 054 | Amhed Baba Center | REFERENCES | 177 |

LIST OF FIGURES

Unless referenced otherwise, all drawings, images and photos are generated and taken by the author.

Page 009: Figure 1-3: Photos of current townships along the outskirts of Mamelodi
Page 011: Photos of current townships along the outskirts of Mamelodi
Page 012: Figure 5: Diagrammatical illustration of Mamelodi's current situation
Page 013: Figure 6-11: Ching's diagrammatic exploration of linearity
Page 013: Figure 12: 1882 – Linear city by Soria y Mata
Page 014: Figure 13: Diagrammatic plan of Atlanta indicating multi nodal development
Page 014: Figure 14: Relating the multi-nodal development as possible solution for Mamelodi's fragmentation
Page 015: Figure 15-17: Mamelodi in relation to Tswahane Metropolitan area and indicating the internal fragmentation
Page 016: Figure 15-17: Mamelodi in relation to Tswahane Metropolitan area and indicating the internal fragmentation
Page 016: Figure 20: Building as a physical container of knowledge
Page 017: Figure 21-30: Examples of arts, crafts and trade as characteristic to Mamelodi
Page 019: Figure 31-40: Abandoned dormitories as lost and deteriorating space
Page 020: Figure 41-43: Desolation and abandonment of the trader stalls at the bus station vs. the lively self-developed trader's market in Mamelodi
Page 023: Figure 44: Wolfenbüttel Library
Page 023: Figure 45: University of Virginia
Page 023: Figure 46: New York University Library
Page 026: Figure 47-51: Abstract spatial exploration of the theory of cognitive schemas
Page 027: Figure 53-55: Simulating movement as 'social glue' with different scenarios, from open space to confinement
Page 028: Figure 56-61: Knowledge transference and interaction from a social, to a public to a private realm
Page 029: Figure 62: Identify schools
Page 030: Figure 63: Establishing a 2km radius
Page 0 31: Figure 64: Identifying schools within a 2km radius
Page 032: Figure 65: Connecting to the community
Page 037: Figure 66-68: From top to bottom: Indicating the growth of a settlement pattern in Kenya as movement patterns
Page 038: Figure 69-70: Market development along main routes in Kenya
Page 039: Figure 71-72: Water-color painting by Klee (Bacon 1968: 115) relating to current Kenya settlement pattern formation
Page 040: Figure 73-75: Fontana's plan for restructuring Rome, 1585, by Bordino (Bacon 1968: 124-125)
Page 041: Figure 76: Frederick's diagram indicating positive and negative space (2007: point 6, author's image)
Page 041: linear movement as positive space
Page 042: Figure 78: The Museum of Struggle from the air (Digest of SA Architecture, 2005/2006: 12)
Page 042: Figure 79: Museum of Struggle as part of the Red Location precinct (Noero 2009: 99)
Page 042: Figure 80: Mosque in Timbuktu
Page 045: Figure 81: Kariakoo market
Page 045: Figure 81: Faraday Market
Page 045: Figure 82: Metro Mall
Page 045: Line sketch of Amhed Baba Center in context
Page 047: Figure: 83-85: Evolution of Kariakoo market
Page 048: Figure: 86: Kariakoo in context
Page 048: Figure 87-89: Different proposals for the market
Page 049: Figure 90: Metro Mall Precinct plan
Page 049: Photo indicating the formation of informal trade surrounding the Faraday Market
Page 050: Figure 92: Covered traders market
Page 050: Figure 93: Typical traders corridor with stalls at each side
Page 050: Figure 94: Example of small-scale, lockable trader stalls as storage

Page 051: Figure 95: Urban development framework by Urban Solutions
Page 051: Figure 96-99: Metro Mall in an urban environment and the way it reacts to context by edge activation
Page 052: Figure 100-103: Internal and external traders markets and formal retail
Page 053: Figure 105: Line sketch of how the building fits into its context
Page 053: Figure 104: Programs located around a central courtyard
Page 054: Figure 107: Southern view of the centre (Lee 2010: 52)
Page 054: Figure 108: Permeability accentuating its public relation (Lee 2010: 53)
Page 054: Figure 109: Internal spaces derived from the surrounding environment (Lee 2010: 54)
Page 055: Figure 110: line sketch of Mamelodi in context to metropolitan area
Page: 057: Figure 111: Context and identifying possible nodes for connection
Page 058: Mamelodi in metropolitan context
Page 059: Figure 113: Mamelodi in metropolitan context
Page 061: Figure 114: Main vehicular movement
Page 061: Figure 115: Main pedestrian movement
Page 062: Figure 116: Panoramic view of Eerste Eabreike station
Page 063: Figure 117-125: Buildings of importance as per figure 120
Page 064: Figure 126: Buildings and structures of significance
Page 065: Figure 127: Panoramic view from Eerste Fabrieke station
Page 065: Figure 128: Panoramic view of southern farmlands
Page 065: Figure 129: Panoramic view of southern farmlands
Page 065: Figure 130: Panoramic view of Nellmapius
Page 067: Figure 131: Urban design concept drawing
Page 069: Figure 132-134: Indicating the underused and deteriorating lost space surrounding the Eerste Fabrieke precinct
Page 070: Figure 135: Identify nodes for development and indicating the residual space in between
Page 071: Figure 136: Possible solution for connectivity
Page 071: Figure 137: Established economic opportunities within 800m walkable radius from one another
Page 072: Figure 138: Establishing structure along 'economic spine'.
Page 073: Figure 139-141: Traditional and modern urban form and Mamelodi's urban form
Page 074: Figure 142: An incorporation of built form and a spatial structure of public spaces
Page 074: Figure 143: Envisaged expansion of progression and development
Page 075: Figure 144: Le Corbusier's plan of Chandigarh, India. The functionalists tended to use the grid as a means of segregating activities into different zones
Page 076: Figure 145-147: Ching's diagram for spatial hierarchy
Page 077: Figure 148: Master Plan; Applying the concept of hierarchy through shape in an attempt to emphasise Eerste Fabrieke as an important configuration
Page 077: Figure 149: Spatial Structure; The primary network of streets and squares: A unifying structure that contains the active public life of the city
Page 078: Figure 150: The primary network connectivity
Page 079: Figure 151: Greenery; Differentiating between hard and soft spaces, and public and productive green areas
Page 079: Figure 152: Land use; Allocating programme and function so as to optimise the efficiency in a general network
Page 080: Figure 153: Self-development as infill of residual space
Page 081: Figure 154-156: Theory of urban voids
Page 082: Figure 153: Self-development as infill of residual space
Page 082: Figure 158-163: Street as an integration of activities and public space
Page 082: Figure 164: Diagrammatic representation of the street as a public space
Page 084: Figure 165: Plan of the shared street concept
Page 084: Figure 166: Bird's eye view of the shared street as a connection between proposed taxi drop-off and Eerste Fabrieke Station
Page 084: Figure 167: Typical section through proposed street connecting Tsamya Road to Werste Fabrieke Station
Page 084: Figure 168: Providing a link between new and existing transport nodes
Page 085: Figure 169-171: Sert, Soltan and von Moltke. New communities Project. The goal of this project was to create a compact



environment based on intensive land use without the sprawl of the suburb or the inefficient planning of the core city
Page 086: Figure 172: Vision for the future: providing the necessities for self development and adaption
Page 087: Figure 173: design concept
Page 089: Figure 174-179: Block plan development
Page 091: Figure 180: Proposed block plan as a mixed-use development
Page 092: Figure 181: Site investigation
Page 093: Figure 182-185: Serving as catalyst while weaving together community and function
Page 094: Figure 186-189: Site plan development
Page 095: Figure 190: Precinct mass refinement
Page 096: Figure 191: Creating a vision for the future
Page 097: Figure 192: Initial plan of activities arcade
Page 097: Initial elevation of activities arcade
Page 097: Extending an un-programmed plan
Page 098: Figure 195: Isfahan, Iran. The street forms a strong spine for the co-existence of activities
Page 099: Figure 196: Investigation of plan and section
Page 101: Figure 197-203: Spatial exploration of prototype one
Page 102: Figure 204-211: Spatial exploration of prototype two
Page 103: Figure 212-219: Spatial exploration of prototype three
Page 104: Figure 220: Intervention as permeable and extension of the street
Page 104: Figure 221: Activation of street edge
Page 104: Figure 222: Market space
Page 104: Market space
Page 105: Figure 224-226: Threshold investigation and relation to street edge
Page 106: Figure 227: Functions
Page 106: Extension toward the street
Page 106: Figure 229: Softening the street edge
Page 107: Figure 230-232: Facade investigation
Page 108: Figure 233: View from southern end
Page 108: Figure 234: Open space and Post-office
Page 108: Figure 235: Arcade from minibus drop-off
Page 109: Figure 236-241: Building as representation within the community
Page 110: Figure 242-245: From top to bottom: 1928 – Villa Savoye- a positive architectural statement, Proposed Information and Resource Centre
Page 111: Figure 246-255: Design process of site, form and scale
Page 112: Figure 256: Centre allows for multiple entries into courtyard
Page 113: Figure 257: Ground floor expansion into public realm
Page 114: Figure 258-159: Courtyard space
Page 114: Figure 260: Connection to public realm
Page 115: Figure 261: First floor investigation
Page 116: Figure 162-165: Section investigation
Page 117: Figure 266: Second floor investigation
Page 118: Figure 167-169: Section investigation
Page 119: Figure 270-287: Prototype one and two: Spatial exploration and fragmentation of the greater civic centre
Page 121: Figure 288-291: Facade investigation
Page 122: Figure 300-302: Internal space and natural light investigation
Page 123: Figure 304: Section through clinic in relation to Information centre, courtyard and pedestrian corridor
Page 124: Figure 305: Clinic in relation to Eerste Fabrieke Station
Page 125: Figure 306-307: Ground and first floor investigation
Page 126: Figure 308: Section through clinic indicating treatment rooms, waiting area and first floor office space
Page 126: Figure 309: Perspective of pedestrian walkway south of the clinic
Page 127: Figure 310: Planning the modular unit

Page 128: Figure 311-314: Primary elements influencing the form of the housing development
Page 129: Figure 315: Vision as seen from the activities arcade
Page 130: Figure 316-319: Indicating how modular units fit together
Page 131: Figure 320: North- eastern perspective
Page 131: Figure 321: Longitudinal section
Page 131: Figure 322: Units facing access road
Page 133: Figure 332: Basic structural frame
Page 135: Figure 326-328: Museum and Art gallery, City Museum, National History Museum by Le Corbusier, Chandigarh (author's photo)
Page 135: Figure 329: Metro Mall by Urban Solutions, Johannesburg (author's photo)
Page 135: Figure 330-335: College of Art and College of Architecture by Le Corbusier, Chandigarh (author's photo)
Page 136: Figure 336-337: Grouping of programmes and services
Page 136: Figure 338-340: Primary concrete structure and secondary infill
Page 137: Figure 341: Section indicating incorporation of screens
Page 137: Figure: 342-343: Concrete and fiber cement shading devices as infill
Page 138: Figure 344: Articulation of interior spaces through in-situ cast light shelves
Page 139: Figure 345: Incorporation of balustrade and fixed louver system for articulation of open walkways
Page 140: Figure 346: Fiber cement louver detail
Page 140: Figure 347: Plan of adjustable metal louvers
Page 140: Figure 348: Variety of lightweight metal shading devices fixed to concrete frame
Page 141: Figure 349: Lightweight metal shading devices as method of controlling internal climate
Page 141: Figure 350: Combination of fiber cement and concrete frame in section
Page 141: Figure 351: Corrugated iron louver detail
Page 141: Figure 352: Adjustable façade to control light and allow for natural ventilation
Page 142: Figure 353: Providing a deeper membrane for sun control allows for flexibility and control of internal spaces
Page 143: Figure 354: Defining space through basic structure
Page 144: Figure 355: Articulation of façade and interior space through screens as sun-control
Page 145
-146: Figure 352: Section showing relationship between Information Centre, courtyard and Community Clinic
Page 147: Figure 353: Spatial section through exhibition space and open studio
Page 148: Figure 354: Section through exhibition space and semi-basement
Page 149: Figure 355: Semi-basement detail
Page 150: Figure 356: Balcony detail
Page 151: Figure 357: General metal lighting or suspended ceiling
Page 151: Figure 358: General metal baluster connection detail
Page 152: Figure 359: Protection of face brick edge, Metro Mall
Page 152: Figure 360: Framed and covered walkway at Faraday Market Transport Interchange
Page 153: Figure 361-364: Pergola structure and related details
Page 154: Figure 365-366: Pergola connection details
Page 155: Figure 367: Site development plan
Page 157: Figure 368: Southern view of Information Resource Centre and public courtyard
Page 160: Figure 369: Southern bird's-eye view of the entire complex, street and live/work housing development along the street edge
Page 161: Figure 370: South-Western view of Information Resource Centre and courtyard
Page 162: Figure 371: South-Eastern view of Information Resource Centre and public courtyard
Page 164: Figure 372: North- Eastern perspective of the Information Resource Centre
Page 165
-166: Figure 373-386: Spatial exploration of the entire intervention from different views and on a variety of scales
Page 175: Southern overview of entire intervention