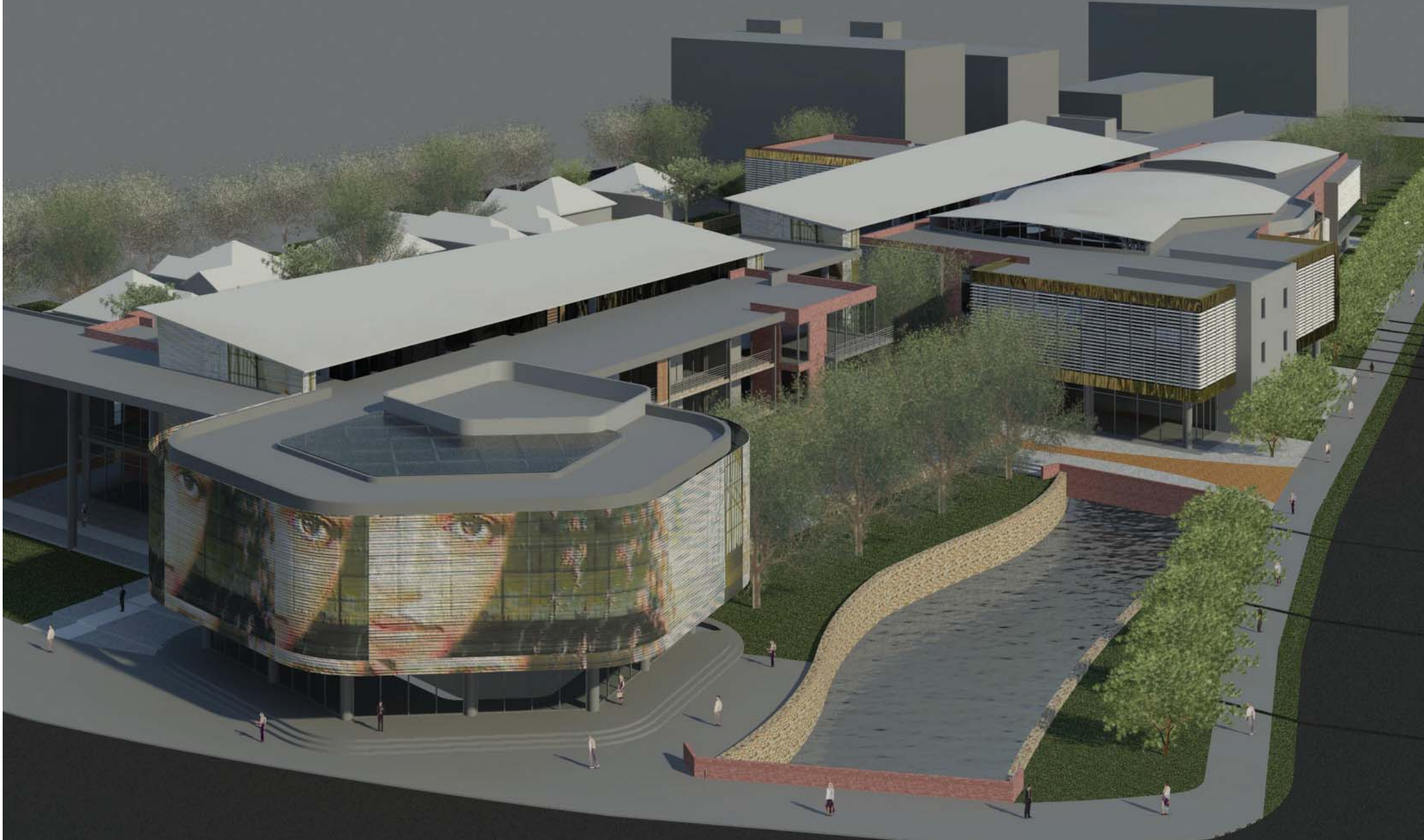


'Genius Loci' A cultural centre for the visual and performing arts

Architecture and the senses



Christopher Sparks

24104168

This dissertation is submitted in partial fulfillment of the requirements for the M.Arch(Prof) in the Department of Architecture,
Faculty of Engineering, the Built Environment and Information Technology.

University of Pretoria
November 2009

Study Leader: Prof. Piet Vosloo

Address: Cnr Nelson Mandela Drive and Kotze Street, Sunnyside, PTA
Building Description: A Cultural Centre for the Visual and Performing Arts
Research Field: Heritage and Cultural Landscapes

“Culture accounts for the symbolic forms via which people codify, understand and negotiate their everyday lived experience”

The proposed design will develop a synthesis between art, culture and economy and urban vitality by creating a platform for artists. The goal of the project is to develop the Oeverzicht village to act as a cultural gateway into the Tshwane Inner City, where visitors and residents are greeted with a sense of arrival celebrating the cultural identity of the greater Tshwane and South African context

Abstract

The aim of this dissertation is to explore the possibilities of architecture as a sensory phenomenon and to explore how we can experience architectural space through all our senses, and how architecture can influence how we experience our senses in space.

The project is located within the cultural node identified within the Nelson Mandela Development Corridor(MDC) and the proposed building is one of a cultural centre for the visual and performing arts. The centre is aimed at creating a heightened awareness and insight into the creative processes of artists and performers for the general public, community, users and occupants of the centre and passers-by. This will be achieved through the creation of visual connections and physical interactions between the users, artists and performers and passers by as well as creating a heightened experience of space and place on a human scale for visitors, performers, artists and general public.

The centre also incorporates retail, commercial and residential components in order to energise the square and centre throughout the day and

night, creating an active 24hour environment, which is often lacking in a development of this nature.

The activities of the centre, along with those of the existing Oeverzicht houses and old M.O.T.H. club, that have been incorporated into the development spill out onto a central urban activity square, where impromptu and planned performances are to be staged.

The aim of the development is ultimately to develop a synthesis between arts, culture, economy and urban vitality by creating a platform for the arts. The aim of this dissertation is to explore the ability of spaces inside this building typology to assist in inspiring each of its occupants through the creation of memorable spatial experiences.

Samevatting

Die doel van hierdie tesis is om die moontlikhede van argitektuur as 'n sensoriese fenomina te ondersoek asook hoe om die argitektoniese spasie deur al ons denke te ondervind, en hoe argitektuur ons denke kan beïnvloed en terselfdertyd hoe ons ons denke in spasie kan ondervind.

Die projek is gebaseer binne die kulturele node, geïdentifiseer binne die Nelson Mandela ontwikkelings node en die voorgestelde gebou is 'n kulturele sentrum vir die visuele en uitvoerende kunste. Die sentrum is daarop gemik om verhoogde bewustheid en insig vir die kreatiewe prosesse van kunstenaars en uitvoerders in die algemene publiek, gemeenskap, verbruikers, inwoners en verbygangers te wek. Dit sal bereik word deur die ontwikkeling van visuele aansluitings en fisiese interaksie tussen die verbruikers, kunstenaars, uitvoerders en verbygangers asook om verhoogde ondervinding van spasie en plek op 'n humanistiese skaal vir die besoekers, kunstenaars en algemene publiek tuis te bring.









Die sentrum beskik oor kleinhandel, kommersieële en residentieële komponente wat die plein en sentrum dag en nag intensifiseer deur 'n

aktiewe 24-uur omgewing te skep wat somtyds kortkom in 'n ontwikkeling van hierdie aard .

Die aktiwiteite van die sentrum sowel as die bestaande Oerverzicht huise en die ou M.O.T.H. klub wat in die ontwikkeling geïnkorporeer is loop uit op 'n sentrale stedelike ontwikkelingsplein waar impromptu en beplande vertonings gehou kan word.

Die doel van die ontwikkeling is om 'n verbinding tussen kuns, kultuur, ekonomie en stedelike vitaliteit te vorm asook om 'n verhoog vir die kuns te skep. Die doel van die tesis is om die vermoë van spasies binne die tipologie van die gebou te ondersoek en ook te help om sy inwoners te inspireer deur die ontwikkeling van onthoubare ruimtelike ondervindinge.

Table of contents

Chapter 1.....		Introduction
Chapter 2.....		Urban and context analysis
Chapter 3.....		Theoretical premise
Chapter 4.....		Precedent studies
Chapter 5.....		Design development
Chapter 6.....		Design discourse
Chapter 7.....		Technical investigation
Chapter 8.....		Technical documentation

List of figures

CHAPTER 1 IMAGES

- FIG 1.1_Location Map of Chosen Study Area by Christopher Sparks, photo from GIS dept. UP
- FIG 1.2_Sites included in chosen study area - image courtesy of MDC urban design framework 2005
- FIG 1.3_Aerial View of Chosen Site by Christopher Sparks
- FIG 1.4_Aerial View of Nelson Mandela Drive by Christopher Sparks
- FIG 1.5_Entance/Gateway into the City by Christopher Sparks
- FIG 1.6_Site Location within Pretoria - image courtesy of Atterbury: Oeverzicht Park development proposal
- FIG 1.7_Aerial Location of Site - image courtesy of Atterbury: Oeverzicht Park development proposal
- FIG 1.8_Demarcated Site Boundary - image courtesy of Atterbury: Oeverzicht Park development proposal
- FIG 1.9_Department of Arts and Culture Logo
- FIG 1.10_City Property Logo
- FIG 1.11_The Five Senses

CHAPTER 2 IMAGES

- FIG 2.1_Location of Tshwane - image courtesy of www.Tshwane.gov
- FIG 2.2_Existing cultural landmarks within the CBD of Pretoria by Christopher Sparks
- FIG 2.3_Land parcels of the Mandela Development Corridor (MDC) - image courtesy of MDC urban design framework 2005
- FIG 2.4_Aerial view of MDC looking north by Christopher Sparks
- FIG 2.5_Southern entrance into the city by Christopher Sparks
- FIG 2.6_Greenery along Apies River Channel by Christopher Sparks
- FIG 2.7_New DTI Campus by Christopher Sparks
- FIG 2.8_Apies River Channel by Christopher Sparks
- FIG 2.9_Existing land banking by Christopher Sparks
- FIG 2.10_Aerial View of Mandela Development Corridor from atop Drie Lelies by Christopher Sparks
- FIG 2.11_Transportation map by Christopher Sparks, photo from GIS dept. UP
- FIG 2.12_Pedestrian routes and public transportation nodes by Christopher Sparks, background image courtesy of MDC urban design framework 2005
- FIG 2.13_Existing land ownership - image courtesy of MDC urban design framework 2005
- FIG 2.14_Land use distribution by Christopher Sparks, photo from GIS dept. UP
- FIG 2.15_Existing land zoning - image courtesy of MDC urban design framework 2005
- FIG 2.16_TUT Campus by Christopher Sparks
- FIG 2.17_Esselen Street by Christopher Sparks

FIG 2.18_Urban Activity Nodes by Christopher Sparks, photo from GIS dept. UP
FIG 2.19_Pedestrian movement on Esselen Street by Christopher Sparks
FIG 2.20_Pedestrian movement on Nelson Mandela by Christopher Sparks
FIG 2.21_Restaurants at Oeverzicht Art Village by Christopher Sparks
FIG 2.22_Aims and objectives of group framework - image courtesy of MDC group urban design framework
FIG 2.23_Identification of nodes - image courtesy of MDC group urban design framework
FIG 2.24_Spatial Planning and Urban Design Principles - image courtesy of MDC group urban design framework
FIG 2.25_Node identification, pedestrian paths and transport routes - image courtesy of MDC group urban design framework
FIG 2.26_Site character - Gerhard Moerdyk by Christopher Sparks
FIG 2.27_Limited access to buildings by Christopher Sparks
FIG 2.28_Vacant building by Christopher Sparks
FIG 2.29_Buildings along Rissik Street by Christopher Sparks
FIG 2.30_Site character - Gerhard Moerdyk continued by Christopher Sparks
FIG 2.31_Gerhard Moerdyk by Christopher Sparks
FIG 2.32_Tree lined Gerhard Moerdyk Street by Christopher Sparks
FIG 2.33_Light traffic & quiet character of street by Christopher Sparks
FIG 2.34_Site character - Kotze Street by Christopher Sparks
FIG 2.35_Kotze Street by Christopher Sparks
FIG 2.36_Intersection of Nelson Mandela/Kotze by Christopher Sparks
FIG 2.37_Fast Moving Traffic by Christopher Sparks
FIG 2.38_Site character - Nelson Mandela Drive by Christopher Sparks
FIG 2.39_Rear of Breytenbach Theatre by Christopher Sparks
FIG 2.40_Fast moving traffic by Christopher Sparks
FIG 2.41_M.O.T.H Club inaccessible from Nelson Mandela by Christopher Sparks
FIG 2.42_Pedestrians on Nelson Mandela Drive by Christopher Sparks
FIG 2.43_Local community members by Christopher Sparks
FIG 2.44_Traffic at intersection of Nelson Mandela/Kotze by Christopher Sparks
FIG 2.45_Site character - Nelson Mandela Drive continued by Christopher Sparks
FIG 2.46_Existing M.O.T.H club building by Christopher Sparks
FIG 2.47_Existing restaurant on site by Christopher Sparks
FIG 2.48_Apies River - western boundary of site by Christopher Sparks
FIG 2.49_View from Kotze - current state of site by Christopher Sparks
FIG 2.50_Existing buildings on site by Christopher Sparks
FIG 2.51_Current state of site by Christopher Sparks
FIG 2.52_Site panorama taken from atop Drie Lelies by Christopher Sparks
FIG 2.53_Photographic orientation diagram by Christopher Sparks
FIG 2.54_Existing large trees on site by Christopher Sparks
FIG 2.55_Quiet character of site by Christopher Sparks
FIG 2.56_Existing central paved parking area by Christopher Sparks
FIG 2.57_Plan - Ngue Mini Market by Christopher Sparks - Cad drawings courtesy of Edwin Andersson Koos Visser Architects
FIG 2.58_Western elevation by Christopher Sparks
FIG 2.59_Palisade separation from street by Christopher Sparks

FIG 2.60_Eastern street elevation by Christopher Sparks
FIG 2.61_Eastern street elevation by Christopher Sparks
FIG 2.62_Plan - African Beat Bar by Christopher Sparks - Cad drawings courtesy of Edwin Andersson Koos Visser Architects
FIG 2.63_Outside seating of restaurant by Christopher Sparks
FIG 2.64_Building separated from street by Christopher Sparks
FIG 2.65_South-western perspective by Christopher Sparks
FIG 2.66_Entance and covered porch by Christopher Sparks
FIG 2.67_Plan - Chiefs Hair Salon by Christopher Sparks - Cad drawings courtesy of Edwin Andersson Koos Visser Architects
FIG 2.68_Eastern street elevation by Christopher Sparks
FIG 2.67_Western elevation by Christopher Sparks
FIG 2.70_South-eastern perspective by Christopher Sparks
FIG 2.71_Plan - Habari Bar/Lounge by Christopher Sparks - Cad drawings courtesy of Edwin Andersson Koos Visser Architects
FIG 2.72_Eastern street elevation by Christopher Sparks
FIG 2.73_Northern elevation by Christopher Sparks
FIG 2.74_Plan - Zwakala Jazz cafe by Christopher Sparks - Cad drawings courtesy of Edwin Andersson Koos Visser Architects
FIG 2.75_Eastern street elevation by Christopher Sparks
FIG 2.76_North-western perspective by Christopher Sparks
FIG 2.77_Western elevation by Christopher Sparks
FIG 2.78_Eastern street elevation by Christopher Sparks
FIG 2.79_Plan - Doctors Rooms by Christopher Sparks - Cad drawings courtesy of Edwin Andersson Koos Visser Architects
FIG 2.80_Eastern perspective by Christopher Sparks
FIG 2.81_North-western perspective by Christopher Sparks
FIG 2.82_Western elevation by Christopher Sparks
FIG 2.83_Plan - Changes Bar by Christopher Sparks - Cad drawings courtesy of Edwin Andersson Koos Visser Architects
FIG 2.84_North-eastern perspective by Christopher Sparks
FIG 2.85_Eastern street elevations by Christopher Sparks
FIG 2.86_Existing access to site by Christopher Sparks
FIG 2.87_Plan - M.O.T.H. club by Christopher Sparks - Cad drawings courtesy of Edwin Andersson Koos Visser Architects
FIG 2.88_View from Nelson Mandela Drive by Christopher Sparks
FIG 2.89_Western Elevation by Christopher Sparks
FIG 2.90_Entrance by Christopher Sparks
FIG 2.91_Original structure with fly-tower extension by Christopher Sparks
FIG 2.92_Eastern street elevation by Christopher Sparks
FIG 2.93_Western elevation by Christopher Sparks
FIG 2.94_Surrounding building use distribution by Christopher Sparks, photo from GIS dept. UP
FIG 2.95_Surrounding Materiality by Christopher Sparks
FIG 2.96_Scale of surrounding buildings by Christopher Sparks
FIG 2.97_Photographic orientation diagram by Christopher Sparks
FIG 2.98_Current state of Breytenbach Theatre by Christopher Sparks
FIG 2.99_Surrounding building materiality by Christopher Sparks
FIG 2.100_Surrounding building materiality by Christopher Sparks
FIG 2.101_Overgrown open Site by Christopher Sparks

FIG 2.102_Traditional face brick tectonic by Christopher Sparks
 FIG 2.103_Surrounding building materiality by Christopher Sparks
 FIG 2.104_Historically important structures by Christopher Sparks
 FIG 2.105_Current state of surrounding houses by Christopher Sparks
 FIG 2.106_Surrounding building materiality by Christopher Sparks
 FIG 2.107_Surrounding building materiality by Christopher Sparks
 FIG 2.107_Surrounding street treatment by Christopher Sparks
 FIG 2.108_Current DTI development by Christopher Sparks

CHAPTER 3 IMAGES

FIG 3.1_GKD Mediamesh effects (ag_mediameash_illumesh_en.PDF:pg 6)
 FIG 3.2_Exposed brick - Hector Pieterse Memorial Museum, Jhb by Mashabane Rose Associates Architects (Joubert,O.2009:pg 130)
 FIG 3.3_Use of natural stone - Stone House, Pretoria by Slee & Co Architects (Digest of South African Architecture 2007/2008:pg 204)
 FIG 3.4_Mediamesh creates multimedia experience on building facade (ag_mediameash_illumesh_en.PDF:pg 11)
 FIG 3.5_Use of natural timber - 'The organic House', Cape Town by Albert & Partners Architects (Digest of South African Architecture 2007/2008:pg 178)
 FIG 3.6_Fall of light accentuating curve of wall - House Steenkamp by Elmo Swart Architects (Deckler,T, Grauper, A, Rasmus, H.2006:pg 170)
 FIG 3.7_Soft ingress of natural light by Christopher Sparks
 FIG 3.8_Use of colour creates colourful shade spectrum (Phaidon, 10x10. 2000:pg 95)
 FIG 3.9_Filtered light adding to the visual complexity of the space by Christopher Sparks
 FIG 3.10_Skylight used to provide soft natural light in the creation of a sense of tranquility - Chapel of light by Comrie Wilkinson (Deckler,T, Grauper, A, Rasmus, H.2006:pg 56)
 FIG 3.11_Materiality enhances shadows - Courtyards on Oxford by StudioMAS Architecture (Deckler,T, Grauper, A, Rasmus, H.2006:pg 134)
 FIG 3.12_Shadows adding depth to a space - House Landham by Michelle Sandilands Architects (Joubert,O.2009:pg 335)
 FIG 3.13_Colourful palette of materials - Melrose Arch Hotel by Christopher Sparks
 FIG 3.14_Layered Materiality - High Performance Sports Centre by SoundSpaceDesign (Deckler,T, Grauper, A, Rasmus, H.2006:pg 98)
 FIG 3.15_Natural surface brought to life through shadow articulation by Servaas de Kock
 FIG 3.16_Shadow reveals true textured materiality of wall - Courtyards on Oxford by StudioMAS Architecture (Deckler,T, Grauper, A, Rasmus, H.2006:pg 134)
 FIG 3.17_Texture adds depth to surface by Christopher Sparks
 FIG 3.18_Layered Materiality - Diamond Hill Toll Plaza by Matthews & Associates Architects (Deckler,T, Grauper, A, Rasmus, H.2006:pg 126)
 FIG 3.19_Light enhancing natural beauty of exposed brickwork - Tolplan Head Offices by Thomas Gouws Architects (Digest of South African Architecture 2007/2008:pg 107)
 FIG 3.20_Spatial and visual connection between internal and external environment - Vaal River Pavilion by StudioMAS (Digest of South African Architecture 2008:pg 212)
 FIG 3.21_Tranquility enhanced through material selection - House Enkalweni by SMIT Architects (Digest of South African Architecture 2007/2008:pg 213)
 FIG 3.22_Internal Courtyard - Courtyards on Oxford by StudioMAS Architecture (Deckler,T, Grauper, A, Rasmus, H.2006:pg 134)
 FIG 3.23_Spatial experience enhanced through colour by Christopher Sparks - Parktown Quarter by Boorgertman & partners
 FIG 3.24_Tranquil Roof Space - House Nicola Knight by Meyer + Vorster Architects (Joubert,O.2009:pg 298)
 FIG 3.25_Boundaries blurred between inside/outside by Christopher Sparks - The Outpost Lodge by Daffonchio & Associates
 FIG 3.26_Spatial relationship between external and internal space - House no.89 by Mark van Eeden Architect (Deckler,T, Grauper, A, Rasmus, H.2006:pg 137)
 FIG 3.27_Elevation of massing creating intimate spaces underneath - Westcliff Estate by StudioMAS Architects (Joubert,O.2009:pg 205)
 FIG 3.28_Spatial relationship of different massings create interesting in-between spaces - Northern Cape Provincial Legislature
 by Luis Ferreira da Silva Architects (Deckler,T, Grauper, A, Rasmus, H.2006:pg 10)
 FIG 3.29_Massing provides shelter and gives a sense of security and safety - Baragwanath public transport interchange by Urban Solutions (Deckler,T, Grauper, A, Rasmus, H.2006:pg 66)
 FIG 3.30_Deep window recess enhances wall depth experience by Christopher Sparks
 FIG 3.31_Light enhances the formal language of the masses by Servaas de Kock

CHAPTER 4 IMAGES

- FIG 4.1_Images projected on building facade - image courtesy of Foreign Office Architects (www.f-o-a.net)
- FIG 4.2_Glazed facades of performance spaces - image courtesy of Foreign Office Architects (www.f-o-a.net)
- FIG 4.3_Interior of theatre with glazed back drop - image courtesy of Foreign Office Architects (www.f-o-a.net)
- FIG 4.4_Access route onto the building's 'podium' - (www.glucksman.org/building.htm)
- FIG 4.5_Materiality of the building - (www.glucksman.org/building.htm)
- FIG 4.6_Scale of building related to surrounding context - (www.glucksman.org/building.htm)
- FIG 4.7_Exterior stainless steel cladding- image courtesy of Gehry Partners (<http://www.foga.com>)
- FIG 4.8_Interior of Principal Performance space - image courtesy of Gehry Partners (<http://www.foga.com>)
- FIG 4.9_Concept sketch by Frank Gehry - image courtesy of Frank Gehry (<http://www.foga.com>)
- FIG 4.10_Clean uncomplicated interior (http://www.newmuseum.org/about/new_building)
- FIG 4.11_Landmark building as a result of luminescence (http://www.newmuseum.org/about/new_building)
- FIG 4.12_Seven 'boxes' stacked atop one another (http://www.newmuseum.org/about/new_building)
- FIG 4.13_Glow of exterior skin in early evening (http://www.newmuseum.org/about/new_building)
- FIG 4.14_State Theatre Logo (www.statetheatre.co.za)
- FIG 4.15_Un-inviting exterior by Christopher Sparks

CHAPTER 5 IMAGES

- FIG 5.1_Urban performance space, Federation Square, Melbourne, Australia by LAB Architecture Studio (www.federationsquare.com)
- FIG 5.2_Social interaction at Melrose Arch by Christopher Sparks
- FIG 5.3_Quality of urban realm at Melrose Arch by Christopher Sparks
- FIG 5.4_Visual connection between passers by and dancers at the UJ arts centre, Jhb by Mashabane Rose Associates Architects (Joubert,O.2009:pg 152)
- FIG 5.5_Digital media screens activating public space in Times Square, New York (www.timessquarenyc.org)
- FIG 5.6_ Informal outdoor performance
- FIG 5.7_Urban activity space, Federation Square, Melbourne, Australia by LAB Architecture Studio (www.federationsquare.com)
- FIG 5.8_Performance dancers
- FIG 5.9_Activity in times square
- FIG 5.10_Performers, dancers and artists
- FIG 5.11_Diagram depicting initial space planning response by Christopher Sparks
- FIG 5.12_Diagram depicting initial response in relation to Apies River by Christopher Sparks
- FIG 5.13_Precedent - Head Office Department of Science and Technology - Central movement spine - 'corporate street' by BILD Architects (Joubert,O.2009:pg 62)
- FIG 5.14_Diagram depicting conceptual approach by Christopher Spraks
- FIG 5.15_Diagram depicting planning principles by Christopher Sparks
- FIG 5.16_Design response to existing urban grid (25 May 2009) by Christopher Sparks
- FIG 5.17_Creation of connections to passers by by Christopher Sparks
- FIG 5.18_Access into central square and visual connections by Christopher Sparks
- FIG 5.19_Planning - relationship of centre and square and inclusion of central circulation and activity space by Christopher Sparks
- FIG 5.20_Inclusion of Digital Media screens and access to site by Christopher Sparks
- FIG 5.21_Wrapping of landmark structure in media screens to entice general public into centre by Christopher Sparks
- FIG 5.22_Section through residential apartments (06 June 2009) by Christopher Sparks
- FIG 5.23_Visual connections between artists and general public by Christopher Sparks
- FIG 5.24_Activities from Multipurpose exhibition space spilling onto by Christopher Sparks

FIG 5.25_Section through principal performance space (06 June 2009) - scale and height of building to large for site by Christopher Sparks

FIG 5.26_Section through secondary performance space (06 June 2009) - difficult structure by Christopher Sparks

FIG 5.27_Activation of western facade through large glazed openings in secondary performance space and inclusion of media screens by Christopher Sparks

FIG 5.28_Conceptual planning of final design layout by Christopher Sparks

FIG 5.29_Activation of public activity square through media screens by Christopher Sparks

FIG 5.30_Concept model 3; Positions and locality of various facets of centre by Christopher Sparks

CHAPTER 6 IMAGES

FIG 6.1_3D depicting the locations of various activities within the centre by Christopher Sparks

FIG 6.2_3D - Public activity square

FIG 6.3_Plan of public activity square by Christopher Sparks

FIG 6.4_Location of restaurants and shops by Christopher Sparks

FIG 6.5_3D - External facade - multi-purpose exhibition gallery by Christopher Sparks

FIG 6.6_3D - Studio apartments and student apartments by Christopher Sparks

FIG 6.7_Plan indicating first floor studios and apartments by Christopher Sparks

FIG 6.8_Plan of dinner theatre by Christopher Sparks

FIG 6.9_Section through dinner theatre by Christopher Sparks

FIG 6.10_Section through auditorium of the Jesse H. James Hall in Texas - Inspiration drawn from descending ceiling for internal subdivision of space

FIG 6.11_Sunken orchestra pit by Christopher Sparks

FIG 6.12_Sunken fore stage, elevated rear to accommodate choir by Christopher Sparks

FIG 6.13_Stage components positioned in uniform level by Christopher Sparks

FIG 6.14_Suspended ceiling for reduced audience capacity performances by Christopher Sparks

FIG 6.15_3D - interior perspective principal performance space by Christopher Sparks

FIG 6.16_3D - Studio theatre located adjacent to activity spine by Christopher Sparks

FIG 6.17_3D - Glazing and shading device of secondary performance space by Christopher Sparks

FIG 6.18_Secondary performance space arranged as Proscenium Theatre by Christopher Sparks

FIG 6.19_Secondary performance space arranged as Thrust Theatre by Christopher Sparks

FIG 6.20_Secondary performance space arranged as Arena Theatre by Christopher Sparks

FIG 6.21_3D -Interior perspective secondary performance space

FIG 6.22_3D - Visual connection between dance studios and square by Christopher Sparks

FIG 6.23_Plan of visual material and music resource library by Christopher Sparks

FIG 6.24_3D - Exterior facade of visual material and music resource library by Christopher Sparks

FIG 6.25_Plan of changes to old M.O.T.H. club building by Christopher Sparks

FIG 6.26_Badly executed extensions to be demolished by Christopher Sparks

FIG 6.27_Eastern elevation by Christopher Sparks

FIG 6.28_Eastern elevation by Christopher Sparks

FIG 6.29_Eastern elevation by Christopher Sparks

CHAPTER 7 IMAGES

FIG 7.1_Development to central activity spine by Christopher Sparks

FIG 7.2_Initial basement structural grid layout by Christopher Sparks

FIG 7.3_Development of section through principal performance space by Christopher Sparks

- FIG 7.4_Development of column design by Christopher Sparks
- FIG 7.5_Section through structure of multi-purpose exhibition space
- FIG 7.6_Structural layout of Multi-purpose exhibition space
- FIG 7.7_Section - Structural layout of Principal performance space
- FIG 7.8_Plan - Structural walls and columns
- FIG 7.9_Section - Structural layout of principal performance space
- FIG 7.10_3D - location of 3 main roofing systems
- FIG 7.11_Roof profile over principal performance space by Christopher Sparks
- FIG 7.12_3D - Roof structure over principal and secondary performance spaces by Christopher Sparks
- FIG 7.13_Precedent - Roof system along central circulation spine - New Law Building by Kruger Roos (Deckler,T, Grauper, A, Rasmus, H.2006:pg 105)
- FIG 7.14_Roof profile over central activity spine
- FIG 7.15_3D - Roof structure over central activity spine by Christopher Sparks
- FIG 7.16_Selected stock face brick
- FIG 7.17_Off shutter concrete - Tolplan Head Office by Thomas Gouws Architects (Digest of South African Architecture 2007/2008:pg:106)
- FIG 7.18_Structural steel - Tree House by Van der Merwe Miszewski Architects (Joubert,O.2009:pg 310)
- FIG 7.19_Weathered copper cladding
- FIG 7.20_Chemically protected copper roof sheeting
- FIG 7.21_Newly installed copper cladding
- FIG 7.22_Precedent - Pilkinton Structural Glazing - Link building for the Institute of Infectious Diseases and Molecular Medicine by Gabriel Fagan Architects (Deckler,T, Grauper, A, Rasmus, H.2006:pg 101)
- FIG 7.23_Precedent - demarcation of areas through different floor materials - De Beers Headquarters by Gapp Architects (Deckler,T, Grauper, A, Rasmus, H.2006:pg 111)
- FIG 7.24_Diffused light highlights differences in floor material by Christopher Sparks
- FIG 7.25_Pigmented screeded floors - Tolplan Head Offices by Thomas Gouws Architects (Digest of South African Architecture 2007/2008:pg:106)
- FIG 7.26_Mesh transparency when activated (ag_mediamesh_illumesh_en.PDF:pg 6)
- FIG 7.27_Mesh creates multi-media experience on building facade (ag_mediamesh_illumesh_en.PDF:pg 3)
- FIG 7.28_GKD Mediamesh - LEDs inserted into stainless steel mesh (ag_mediamesh_illumesh_en.PDF:pg 2)
- FIG 7.29_Diagram indicating principal circulation routes by Christopher Sparks
- FIG 7.30_Graph - rainfall vs irrigation requirements by Christopher Sparks
- FIG 7.31_Graph - harvested water vs irrigation requirements by Christopher Sparks
- FIG 7.32_Calculations - irrigation requirements, harvested water, storage tanks by Christopher Sparks
- FIG 7.33_Evaporative cooling unit
- FIG 7.34_Principal performance space HVAC system by Christopher Sparks
- FIG 7.35_Acoustic isolation calculations by Christopher Sparks
- FIG 7.36_Principal performance space - reverberation calculations by Christopher Sparks
- FIG 7.37_(SBAT) assessment results by Christopher Sparks

CHAPTER 8 IMAGES

FIG 8.1_Ground floor plan by Christopher Sparks

FIG 8.2_First floor plan by Christopher Sparks

FIG 8.3_Second floor plan by Christopher Sparks

FIG 8.4_Basement floor plan by Christopher Sparks

FIG 8.5_Site and Roof plan by Christopher Sparks

FIG 8.6_Elevations by Christopher Sparks

FIG 8.7_Section A-A by Christopher Sparks

FIG 8.8_Section B-B by Christopher Sparks

FIG 8.9_Section C-C by Christopher Sparks

FIG 8.10_Section D-D and Section F-F by Christopher Sparks

FIG 8.11_Section E-E by Christopher Sparks

FIG 8.12_Principal performance space lighting gallery details by Christopher Sparks

FIG 8.13_Curtain wall and GKD mediamesh top fixing at multi-purpose exhibition gallery detail by Christopher Sparks

FIG 8.14_Principal performance space truss connection and roof details by Christopher Sparks

FIG 8.15_GKD mediamesh fixing details by Christopher Sparks

FIG 8.16_Studio screens and balcony details by Christopher Sparks

FIG 8.17_Central activity spine gutter details by Christopher Sparks

FIG 8.18_Central Activity Spine truss and roof details by Christopher Sparks

FIG 8.19_Central Activity Spine circulation walkway details by Christopher Sparks

FIG 8.20_Mechanically operable shading device details by Christopher Sparks

FIG 8.21_Copper cladding and air extraction details by Christopher Sparks

FIG 8.22_Secondary performance space removable false ceiling and roof details by Christopher Sparks

FIG 8.23_Curtain wall and GKD mediamesh top fixing details by Christopher Sparks

FIG 8.24_Curtain wall and GKD mediamesh at Multi-purpose exhibition gallery details by Christopher Sparks

FIG 8.25_Basement ventilation details by Christopher Sparks