

CITY MANIFEST

*A Manifestation of the contemporary urban condition through the
use of computational architecture*

Thomas Ludwich Ackermann

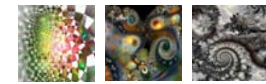
Submitted in partial fulfillment of the degree Magister Architecture (Prof.)

*Department of Architecture in the Faculty of Engineering, Built Environment and
Information Technology, University of Pretoria*

Supervisor: Gary White

Course coordinator: Jacques Laubscher

November 2009



Executive Summary

The theoretical focus of this study is *Meaning in Architecture*. The study does not draw from *history* or *popular culture* for meaning, but will aim to transcend Post-modern concepts by focusing on the contemporary condition and archetypal forms as a *result* of history and popular culture.

This is done through the use of fractal geometry and deals with the questions that arise regarding signification. Fractals can be considered a subdivision of the language of mathematics and will be utilised as mediation between the reality of our world and the generation of form for the purpose of design. This is explored in two analogies, Architecture and Mathematics; and Architecture and Language.

Through this process, subjectivity relating to form is removed as the design was developed in conjunction with the area in which it manifests, through the transformation of quantifiable entities into form. The programme and the process have become a *unified whole* in that mathematical concepts were utilised to design a building to house people involved with mathematics.

The aim of the design proposal is to contribute to the urban landscape of Tshwane by allowing access to facilities in which training in mathematics and computer science can be achieved and to allow individuals to come to a place of self-actualization.

The design is defined as a snapshot of the contemporary condition and therefore makes use of passive and active technologies to create a habitable environment.

It is imperative to realise that society is in a process of transition and this can be embraced by combining 'green' and 'non-green' design approaches, while working towards more energy-efficient design solutions.

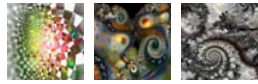


Table of contents



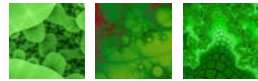
City Manifest - A Manifestation of the contemporary urban condition through the use of computational architecture

	Chapter 1: Introduction	1
	Chapter 2: Normative Position	3
	Chapter 3: Programme	15
	Chapter 4: Precedents	21
	Chapter 5: Framework	29
	Chapter 6: Design development	53
	Chapter 7: Technical Investigation	69
	Chapter 8: Technical Documentation	87
	Addendum & References	113



Chapter 1: Introduction

1.1 Introduction	1
1.2 Background and context	1
1.3 Objective	2
1.4 Approach	2



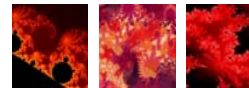
Chapter 2: Normative Position

2.1 Introduction	3
2.2 Language	3
2.3 Architecture and language	5
2.3.1 Why does it exist? Aspects of function and literature	5
2.3.2 Symbolism, literature and Architecture	5
2.4 Architecture and Mathematics	8
2.5 Fractals	9
2.5.1 The City as Fractal	10
2.5.2 Where to now, Application	12



Chapter 3: Programme

3.1 Objective	15
3.2 Motivation	15
3.2.1 The Digital Divide remedied through a Cybercafé	15
3.2.2 The problem of Mathematics education in South Africa	17
3.3 The client	



Chapter 4: Precedents

4.1 Introduction	21
4.2 Möbius House	21
4.3 Living Tomorrow Pavilion	24
4.4 Beachness	26

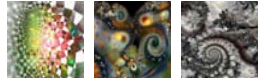


Table of contents

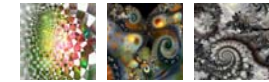


UNIVERSITEIT VAN PRETORIA
UNIVERSITY OF PRETORIA
YUNIBESITHI YA PRETORIA



Chapter 5: Framework

5.1 Introduction	29	5.4.5 Berea Park	40
5.2 Macro Scale Analysis	29	5.4.6 Muckleneuk and Lukasrand	40
5.2.1 Climate	29	5.4.7 Salvokop	41
5.2.2 Topography	30	5.4.8 Summary	41
5.2.3 Geology	31	5.5 Proposed urban framework	41
5.2.4 Surface Hydrology	31	5.5.1 Objectives	42
5.2.5 Biomes	32	5.5.2 Preliminary design guidelines	42
5.2.6 Protected and sensitive Areas	32	5.5.3 Continuation of Urban Fabric	44
5.3 Meso-scale analysis		5.5.4 Districts	44
5.3.1 Re Kgabisa Framework	33	5.5.5 Public open Space	47
5.3.2 Salvokop Framework	34	5.5.6 Links	47
5.4 Micro-scale analysis	35	5.5.7 Circulation	50
5.4.1 Site selection	35		
5.4.2 Land tenure	38		
5.4.3 Palimpsest and Architectural Character	38		
5.4.4 Pretoria Station	39		



Chapter 6: Design development



Chapter 7: Technical Investigation

6.1	Assigning symbols	53	7.1	Introduction	69
6.2	Discussion on each shape	54	7.2	Water Storage	69
6.2.1	Population Group	54	7.2.1	Assumptions regarding the calculations	70
6.2.2	Gender by Age	55			
6.2.3	Education Levels	55	7.3	Ventilation	72
6.2.4	Labour Force	55	7.3.1	Mechanical HVAC system	72
6.2.5	Language	56	7.3.2	Natural Ventilation	76
6.2.6	Mode of travel	56	7.4	Shading	79
6.2.7	Dwelling type	56	7.5	Parking and Sanitary Fitting calculations	84
6.2.8	Source of energy	57	7.6	SBAT Rating	84
6.2.9	Water Source	57	7.7	Conclusion	86
6.2.10	Annual household income	57			
6.2.11	Closing Remarks	58			
6.3	The Shapes as Fractals	58			
6.4	Utilising the models as a Form vocabulary	58			
6.4.1	Process	59			
6.5	Conclusion	68			

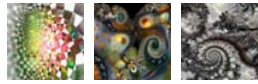
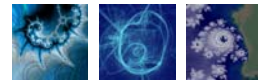


Table of contents



UNIVERSITEIT VAN PRETORIA
UNIVERSITY OF PRETORIA
YUNIBESITHI YA PRETORIA



Chapter 8: Technical Documentation

8.1 Introduction	87	Addendum	113
		Model Photos	113
8.2 Documentation	88		
		References	117
Ground Floor	88		
First Floor	89		
Second Floor	90		
Roof Plan	91		
Section A-A	92		
Section C-C	94		
Section B-B	96		
Site Plan	97		
North Elevation	98		
East Elevation	99		
South Elevation	100		
West Elevation	101		
Basement	102		
Basement Wall Detail	103		
Central Core detail	104		
Central Core detail	105		
Roof Detail	106		
Expansion Joint Detail	107		
First Floor Slab Detail	108		
Second Floor Slab Detail	109		
Shading Device Detail	110		
Shading Device Isometric	111		
Balustrade	112		



Table 2-1: Levels of ambiguity within Architecture, Normal Language and Mathematics as languages (Source: Own Table)	4	Table 6-1: Summary of the assignment of shapes (Source: Own Table)	54
Table 3-1: Internet users and population statistics for Africa (Source: IWS, 2009)	16	Table 7-1: Rain water harvest calculations (Source: Own Table)	68
Table 3-2: Schedule of areas (Source: Own Table)	20	Table 7-2: Parking and Sanitary requirements (according to SANS 0400)	80
Table 5-1: Climate of City of Tswhane, 1961 – 1990 (Source: Weather SA, 2003)	30		
Table 5-2: Ownership of the land in question (Source: Compiled from WinDeed)	38		



List of Figures



UNIVERSITEIT VAN PRETORIA
UNIVERSITY OF PRETORIA
YUNIBESITHI YA PRETORIA

Figure 2-1: Ricardo Bofill's Pyramid Le Perthus, 1976, Catalonia (Source: Norberg-Schulz, 2000: 112)	6	Figure 4-4: <i>Möbius Strip House Interior Photograph</i> (Source : Un Studio)	22
Figure 2-2: The proposed distribution of towns in A pattern language (Source: Alexander, 1977:20)	10	Figure 4-5: <i>Möbius Strip House Exterior Photograph</i> (Source : Un Studio)	22
Figure 2-3: Sierpinski Carpet: Pattern as defined by Waclaw Sierpinski (Source: Anton & Rorres, 1994: 709)	11	Figure 4-6: <i>Möbius Strip House Exterior Photograph</i> (Source : Stories of Houses)	22
Figure 4-1: Möbius strip (Source: Stories of Houses, 2003)	21	Figure 4-7: <i>Möbius Strip House Plan</i> (Source : Emap)	23
Figure 4-2: <i>Möbius Strip House Cardbord Model</i> (Source : Un Studio)	22	Figure 4-8: <i>Möbius Strip House Plan</i> (Source : Emap)	23
Figure 4-3: <i>Möbius Strip House Interior Photograph</i> (Source : Stories of Houses)	22	Figure 4-9: <i>Möbius Strip House Section</i> (Source : Emap)	23
		Figure 4-10: <i>Möbius Strip House Interior Photograph</i> (Source : Emap)	23

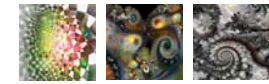


Figure 4-11: <i>Mobius Strip House Interior Photograph</i> (Source : <i>Un Studio</i>)	23	Figure 4-18: Living Tomorrow Pavilion Design Model (Source: <i>Bahamon</i>)	25
Figure 4-12: Living Tomorrow Pavilion Exterior Photograph (Source: <i>Krajewski</i>)	24	Figure 4-19: Living Tomorrow Pavilion Interior Photograph (Source: <i>Arcspace</i>)	25
Figure 4-13: Living Tomorrow Pavilion Design Models (Source: <i>Bahamon</i>)	24	Figure 4-20: Living Tomorrow Interior Photograph (Source: <i>Arcspace</i>)	25
Figure 4-14: Living Tomorrow Pavilion Design Models (Source: <i>Bahamon</i>)	24	Figure 4-21: Living Tomorrow Interior Photograph (Source: <i>Arcspace</i>)	25
Figure 4-15: Living Tomorrow Pavilion Design Models (Source: <i>Bahamon</i>)	25	Figure 4-22: Living Tomorrow Pavilion Exterior Photograph (Source: <i>Krajewski</i>)	25
Figure 4-16: Living Tomorrow Pavilion Reception Desk (Source: <i>Bahamon</i>)	25	Figure 4-23: Living Tomorrow Pavilion Exterior Photograph (Source: <i>Krajewski</i>)	25
Figure 4-17: Living Tomorrow Pavilion Exterior (Source: <i>Bahamon</i>)	25		



List of Figures



UNIVERSITEIT VAN PRETORIA
UNIVERSITY OF PRETORIA
YUNIBESITHI YA PRETORIA

Figure 4-24: NOX Beecness Conceptual Model (<i>Source: NOX</i>)	26	Figure 5-1: Average Air Temperatures for Pretoria (<i>Source: Adapted from Weather SA, 2003</i>)	29
Figure 4-25: NOX Beecness Conceptual Model (<i>Source: Vividvormgeving</i>)	26	Figure 5-2: Prevailing Wind Direction (<i>Source: Adapted from Weather SA, 2003</i>)	31
Figure 4-26: NOX Beecness Computer Rendering (<i>Source: Arcspace</i>)	26	Figure 5-3: Site location (<i>Source: CTGIS, 2009</i>)	35
Figure 4-27: NOX Beecness Computer Rendering (<i>Source: Steele, 2004</i>)	26	Figure 5-4: Aerial view of site (<i>Source: Railways Africa, 2009</i>)	36
Figure 4-28: NOX Beecness Computer Rendering (<i>Source: Spuybroek, 1999</i>)	26	Figure 5-5: Overview of the site (<i>Source: CTGIS, 2009</i>)	37
Figure 4-29: NOX Beecness Computer Rendering (<i>Source: Steele, 2004</i>)	27	Figure 5-6: View from Northwest (<i>Source: Own Image</i>)	37
Figure 4-30: NOX Beecness Computer Rendering (<i>Source: Steele, 2004</i>)	27	Figure 5-7: View from East (<i>Source: Own Image</i>)	37

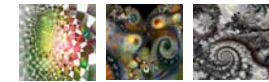


Figure 5-8: View from South <i>(Source: Own Image)</i>	37	Figure 5-15: Links <i>(Source: Own Image)</i>	49
Figure 5-9: Stand numbers <i>(Source: CTGIS, 2009)</i>	38	Figure 5-16: Circulation <i>(Source: Own Image)</i>	51
Figure 5-10: Pretoria Station Precinct <i>(Source: Own Image)</i>	39	Figure 6-1: Hexagon - Population group <i>(Source: Own Image)</i>	54
Figure 5-11: Rendering of the new Gautrain Station in Pretoria <i>(Source: Africa Railways, 2009)</i>	44	Figure 6-2: Circular Disc - Male and female <i>(Source: Own Image)</i>	55
Figure 5-12: Continuation of urban fabric <i>(Source: Own Image)</i>	45	Figure 6-3: Sphere Education levels <i>(Source: Own Image)</i>	55
Figure 5-13: Districts <i>(Source: Own Image)</i>	46	Figure 6-4: Square disk Labour force <i>(Source: Own Image)</i>	55
Figure 5-14: Public space <i>(Source: Own Image)</i>	48	Figure 6-5: Half sphere - Language <i>(Source: Own Image)</i>	56



List of Figures



UNIVERSITEIT VAN PRETORIA
UNIVERSITY OF PRETORIA
YUNIBESITHI YA PRETORIA

Figure 6-6: Coil - Mode of travel <i>(Source: Own Image)</i>	56	Figure 6-14: Design development (3) <i>(Source: Own Image)</i>	61
Figure 6-7: Hexagon - Dwelling type <i>(Source: Own Image)</i>	56	Figure 6-15: 'Words' utilized for plan generation <i>(Source: Own Image)</i>	62
Figure 6-8: Prism - Source of energy <i>(Source: Own Image)</i>	57	Figure 6-16: A Ground Floor B First Floor C Second Floor <i>(Source: Own Image)</i>	62
Figure 6-9: Upside down prism - Water source <i>(Source: Own Image)</i>	57	Figure 6-17: Greater Context <i>(Source: Own Image)</i>	63
Figure 6-10: Octahedron - Annual household income <i>(Source: Own Image)</i>	57	Figure 6-18: Site <i>(Source: Own Image)</i>	63
Figure 6-11: Combined Xenodream™ model <i>(Source: Own Image)</i>	59	Figure 6-19: North Eastern Perspective <i>(Source: Own Image)</i>	63
Figure 6-12: Design development (1) <i>(Source: Own Image)</i>	60	Figure 6-20: View From Gautrain Station <i>(Source: Own Image)</i>	64
Figure 6-13: Design development (2) <i>(Source: Own Image)</i>	60		

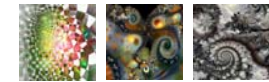
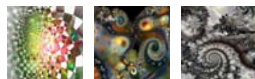


Figure 6-21: North Western Perspective <i>(Source: Own Image)</i>	64	Figure 6-29: Public Space on Northern Side <i>(Source: Own Image)</i>	69
Figure 6-22: Southern Perspective <i>(Source: Own Image)</i>	65	Figure 7-1: Water Storage Tanks <i>(Source: Own Image)</i>	69
Figure 6-23: North Eastern perspective with Gautrain Station in the Background <i>(Source: Own Image)</i>	65	Figure 7-2: HVAC-System Ducting <i>(Source: Own Image)</i>	72
Figure 6-24: View of the Context from South –West <i>(Source: Own Image)</i>	66	Figure 7-3: HVAC-System Ducting <i>(Source: Own Image)</i>	73
Figure 6-25:North Western Perspective <i>(Source: Own Image)</i>	66	Figure 7-4: Airflow on the Ground Floor <i>(Source: Own Image)</i>	76
Figure 6-26: South-Eastern Perspective <i>(Source: Own Image)</i>	67	Figure 7-5: Airflow on the First Floor <i>(Source: Own Image)</i>	76
Figure 6-27: North Eastern perspective with Gautrain Station in the Background <i>(Source: Own Image)</i>	67	Figure 7-6: Airflow on the Second Floor <i>(Source: Own Image)</i>	77
Figure 6-28: Eastern perspective with Gautrain Station in the Background <i>(Source: Own Image)</i>	68		



List of Figures



UNIVERSITEIT VAN PRETORIA
UNIVERSITY OF PRETORIA
YUNIBESITHI YA PRETORIA

Figure 7-7: Airflow on Eastern Side between the three floors to the clerestory windows (Source: Own Image)	77	Figure 7-14: Winter noon solstice sunlight penetration on the Eastern Wing (Source: Own Image)	81
Figure 7-8: Airflow on the Western side through the clerestory windows (Source: Own Image)	77	Figure 7-15: Summer noon solstice sunlight penetration on the Eastern Wing (Source: Own Image)	81
Figure 7-9: Airflow in the Central core between the three floors to the clerestory windows (Source: Own Image)	77	Figure 7-16: Winter noon solstice sunlight penetration on the Western Wing (Source: Own Image)	81
Figure 7-10: Repurposed Concrete palisades used as shading (winter) (Source: Own Image)	79	Figure 7-17: Summer noon solstice sunlight penetration on the Western Wing (Source: Own Image)	81
Figure 7-11: Repurposed Concrete palisades used as shading (Summer) (Source: Own Image)	79	Figure 7-18: SBAT Rating (Source: SBAT Spreadsheet)	85
Figure 7-12: Detail of fixing of shading device (Source: Own Image)	80	Chapter 8 (Source: Own Images)	88
Figure 7-13: Rhoicissus tomentosa (Source: Sheat, 1984)	80	Addendum (Source: Own images)	107