

8.1 Views of Building



Fig. 8.1 Birds eye view 1:500

8.0 Appendices

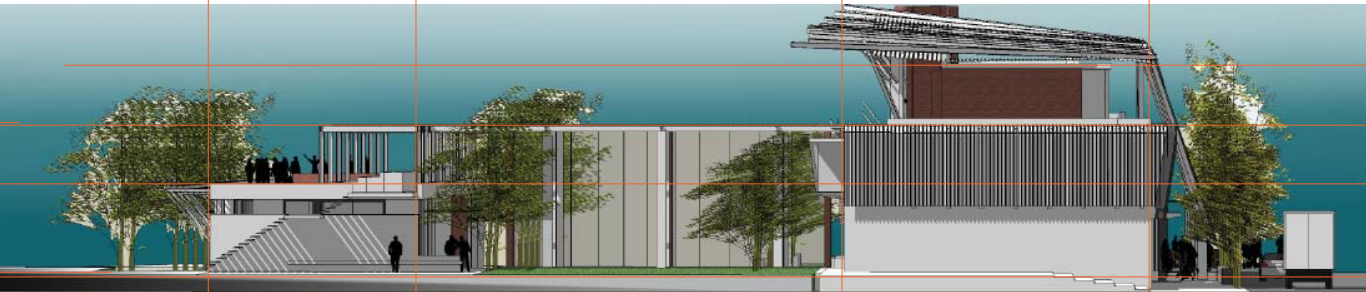


Fig. 8.2 Eastern Elevation 1:500



Fig. 8.3 Western Elevation 1:500



Fig. 8.4 Northern Elevation 1:500

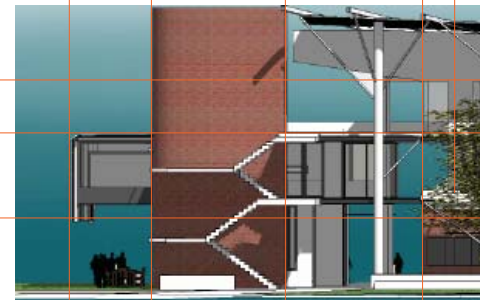
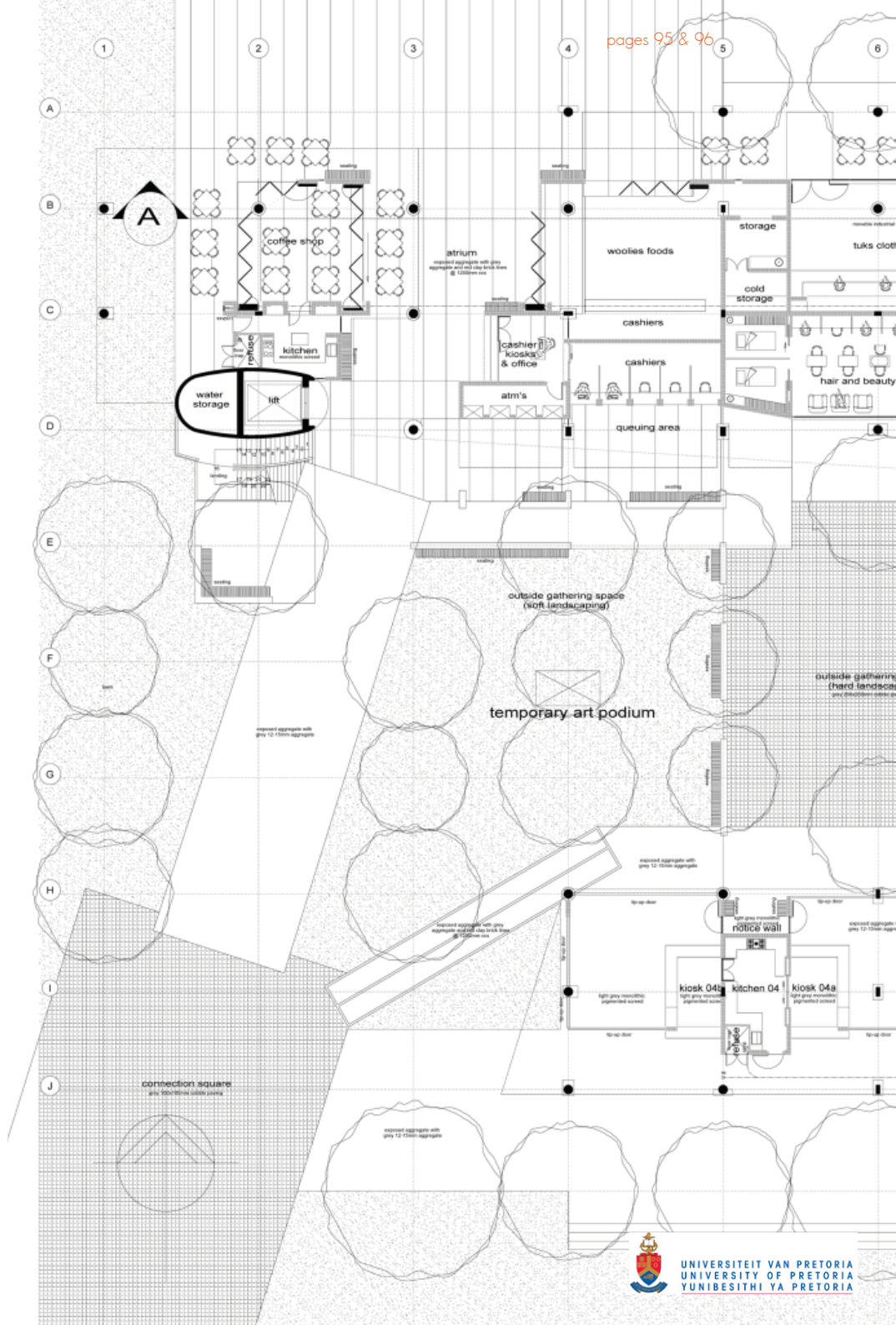
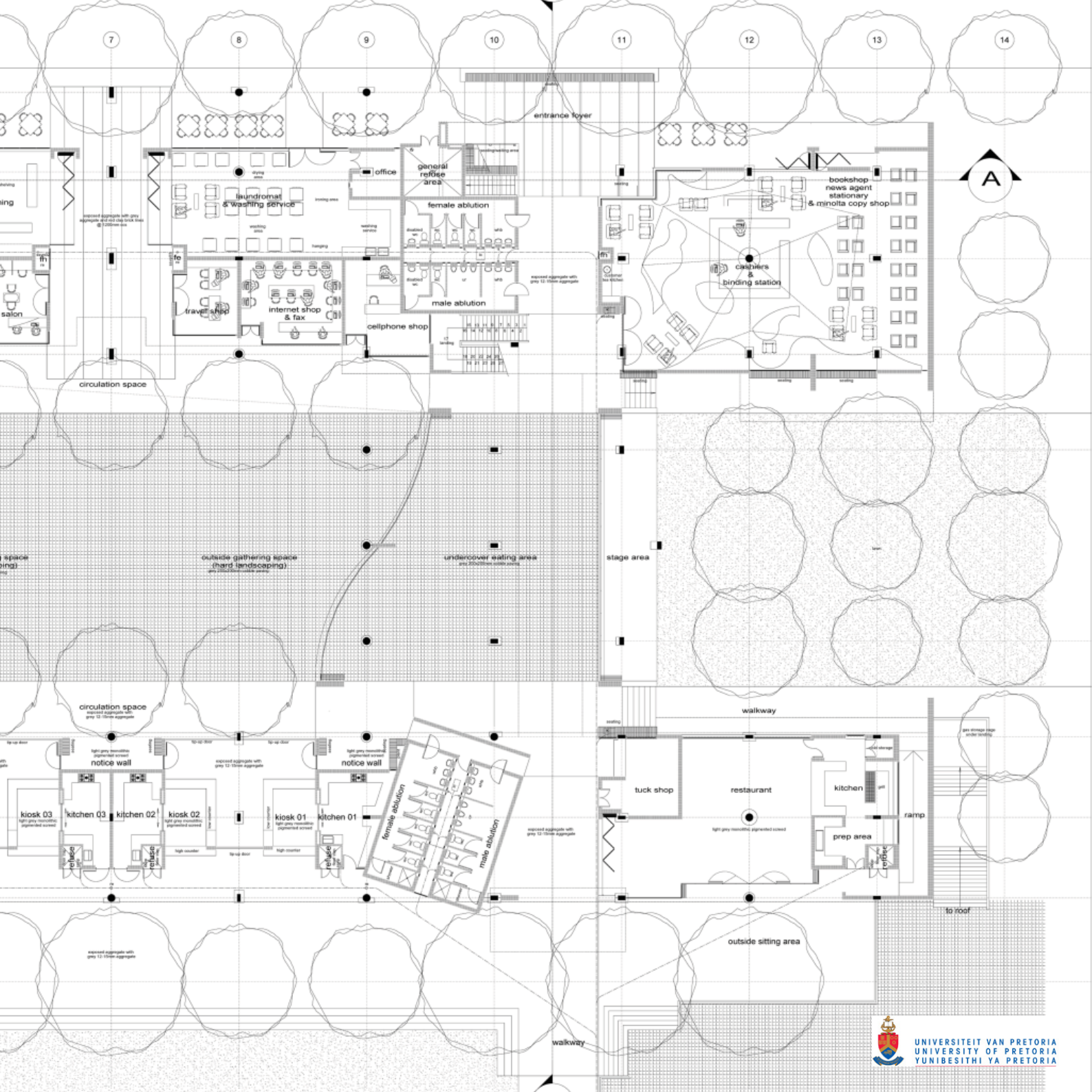




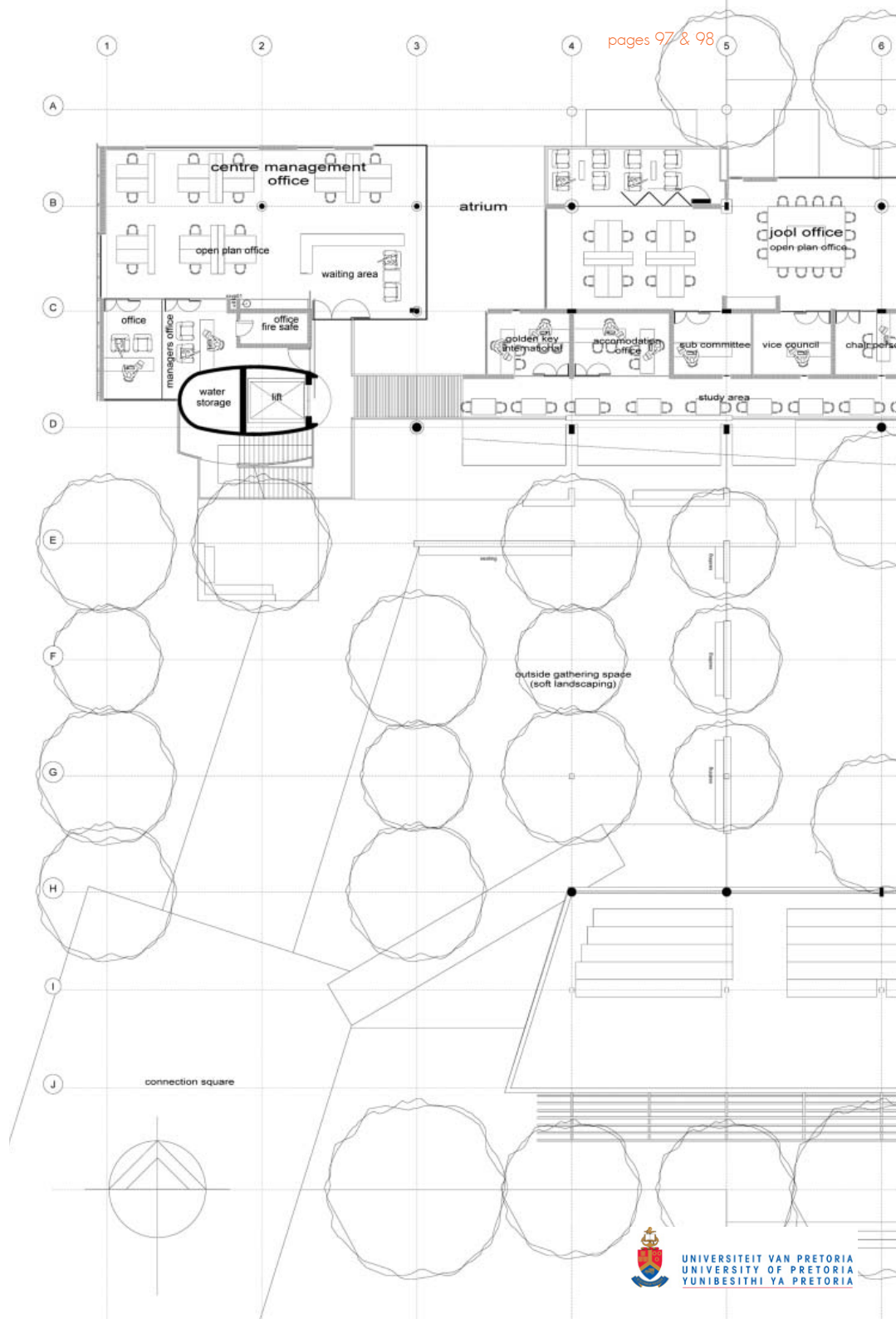
Fig. 8.5 Southern Elevation 1:500

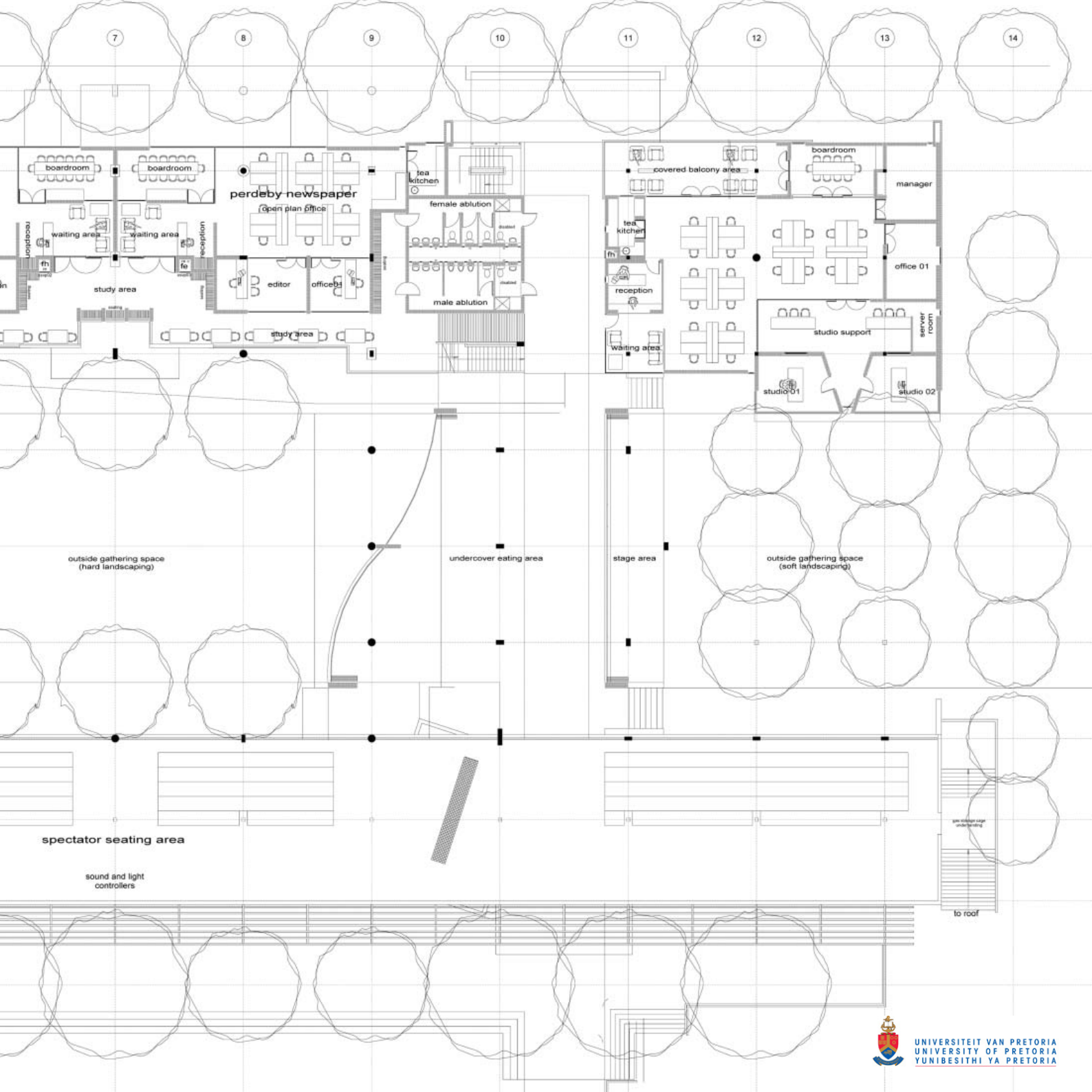
appendix 8.2 Ground floor plan 1:350



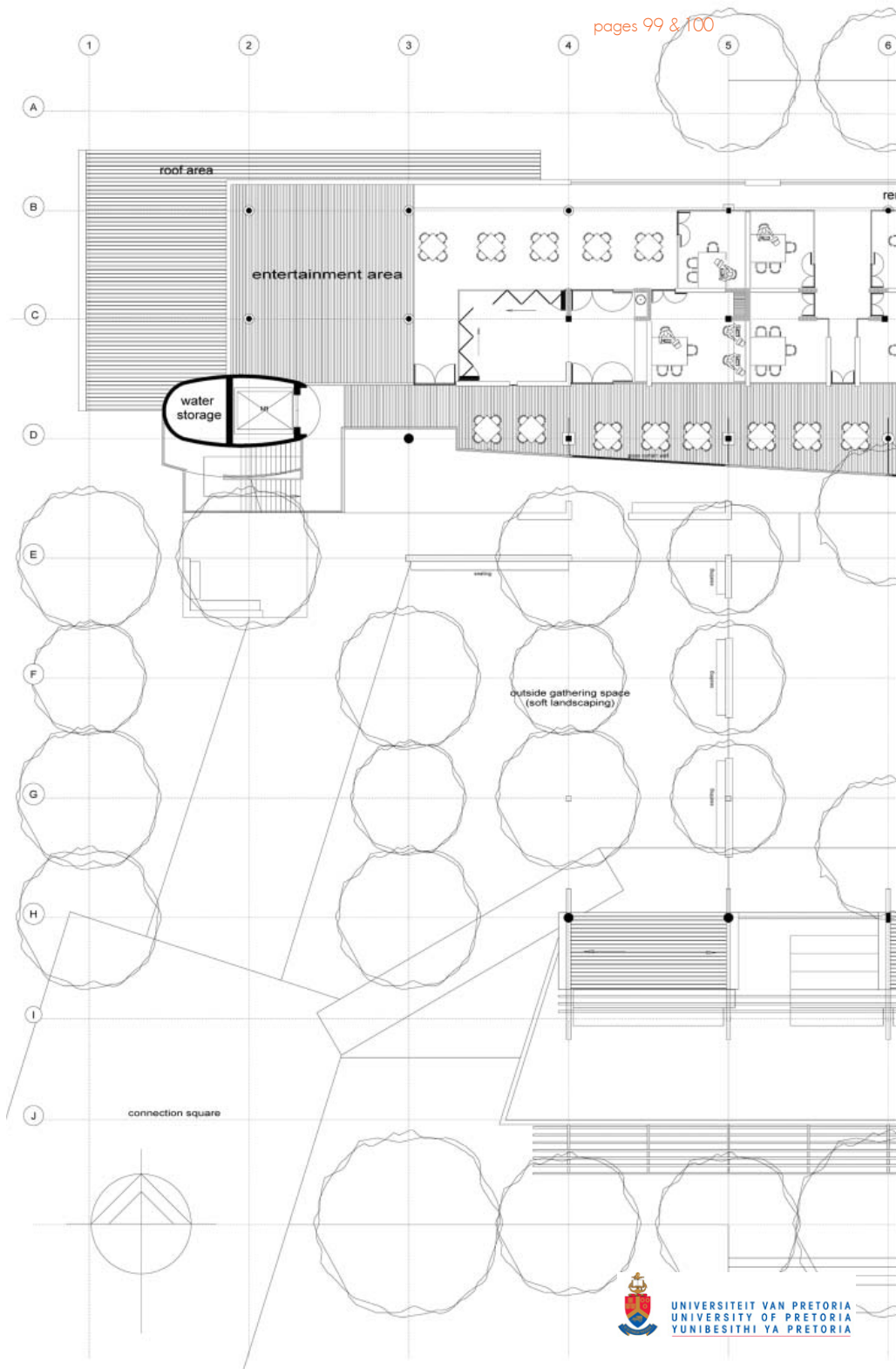


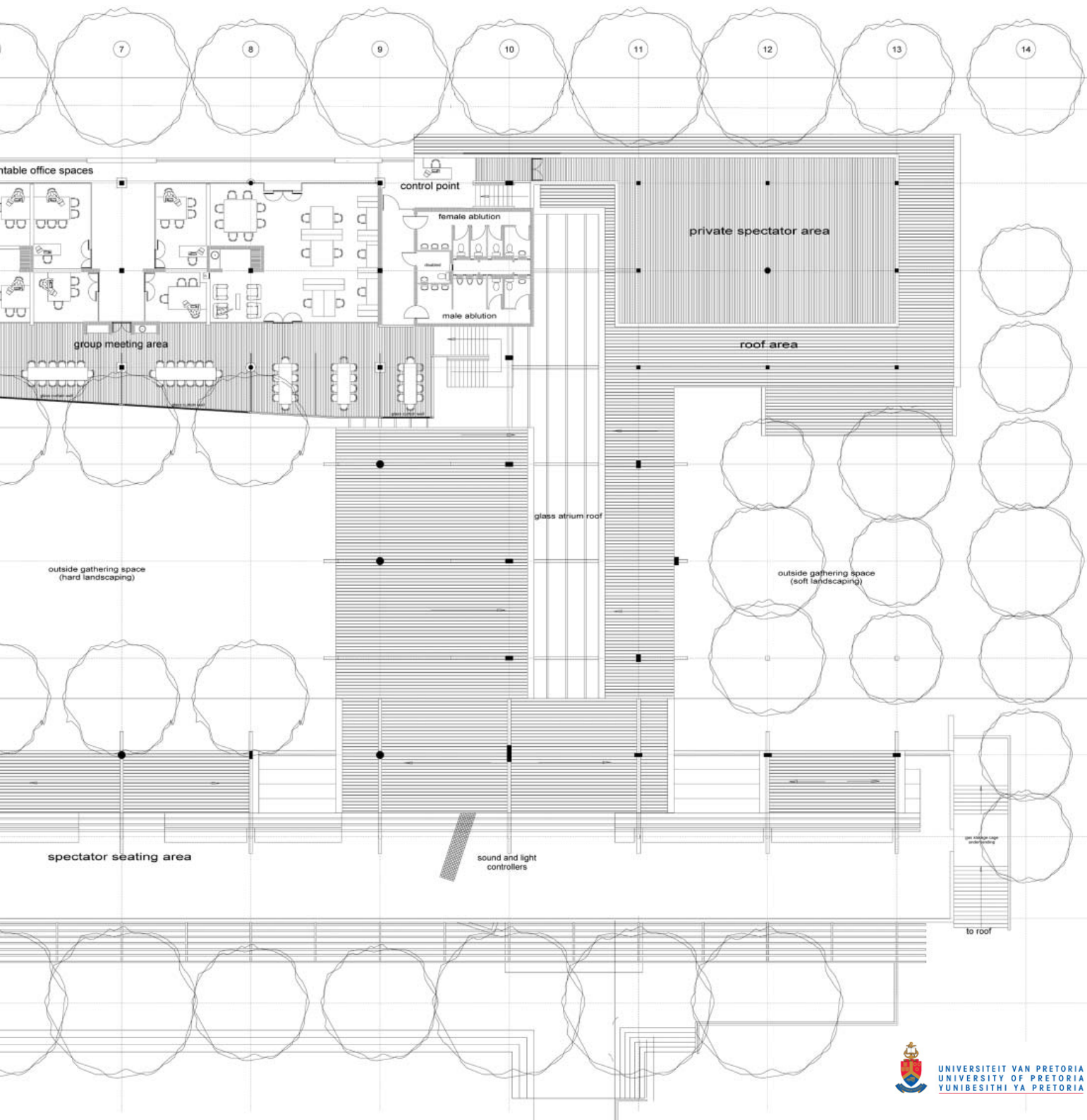
appendix 8.3 1st floor plan 1:350



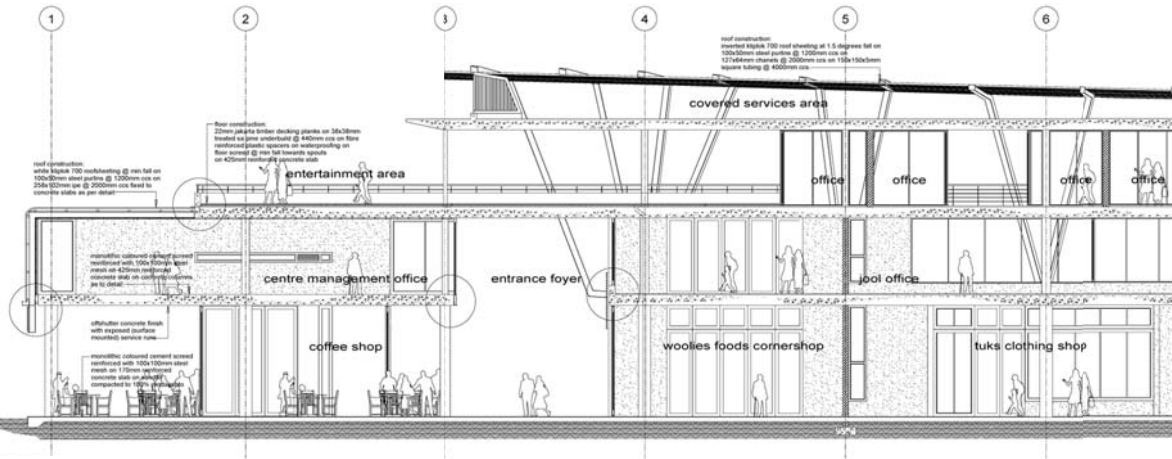


appendix 8.4 2nd floor plan 1:350

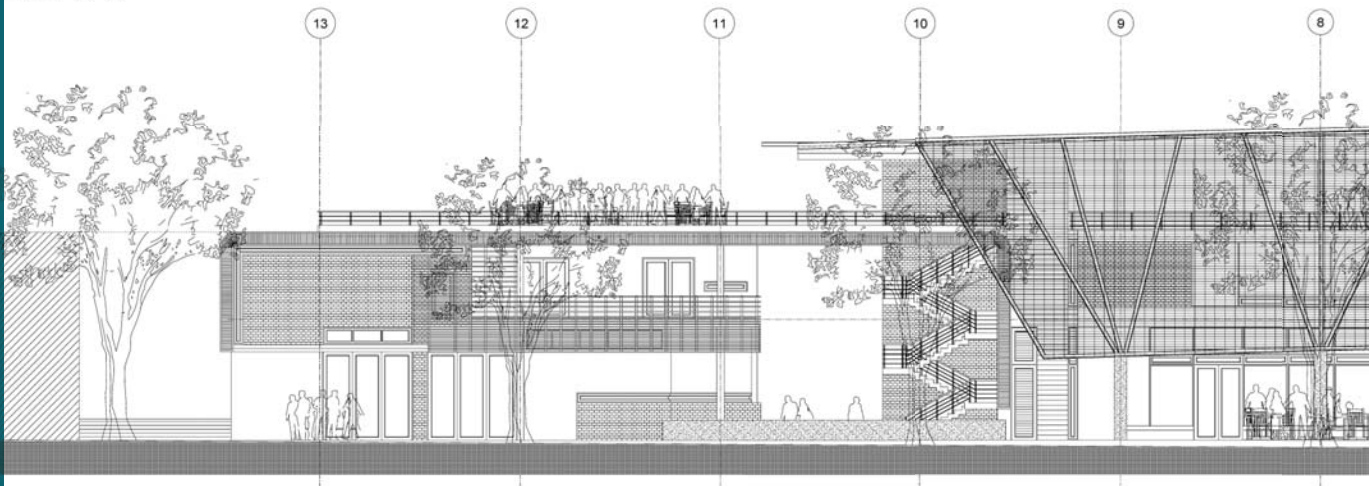




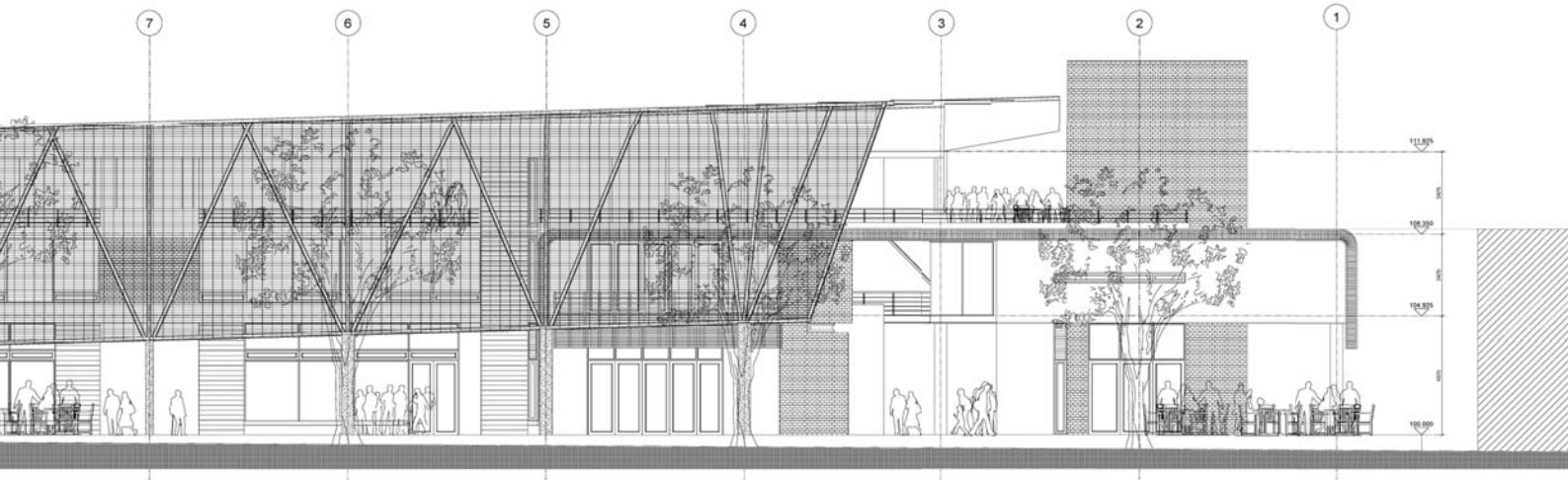
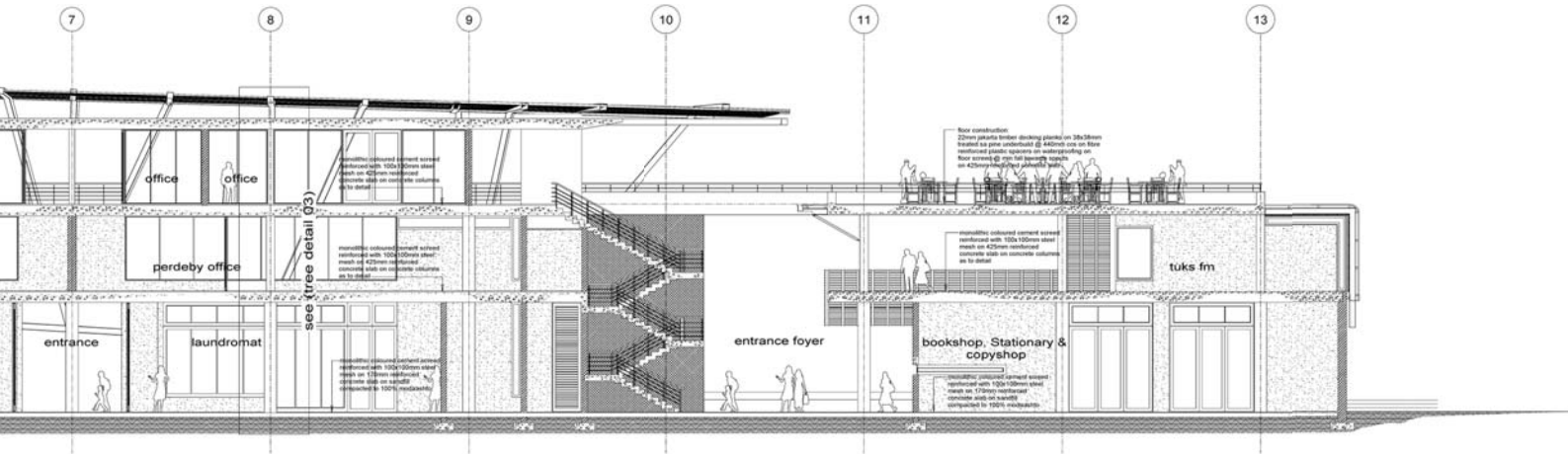
appendix 8.5 sections & elevations 1:350



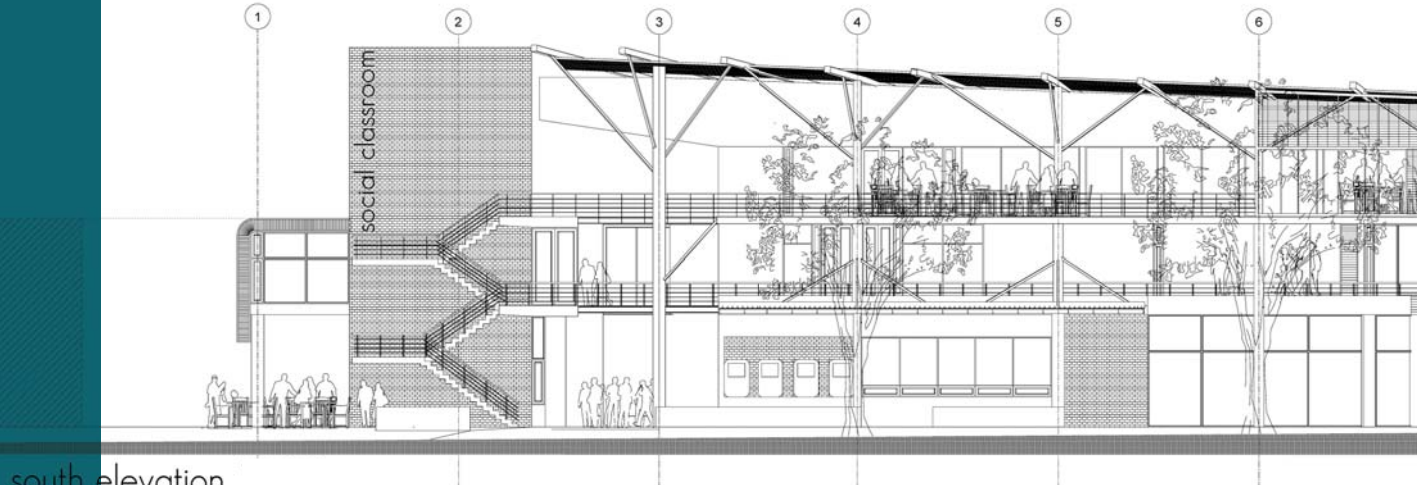
section a-a



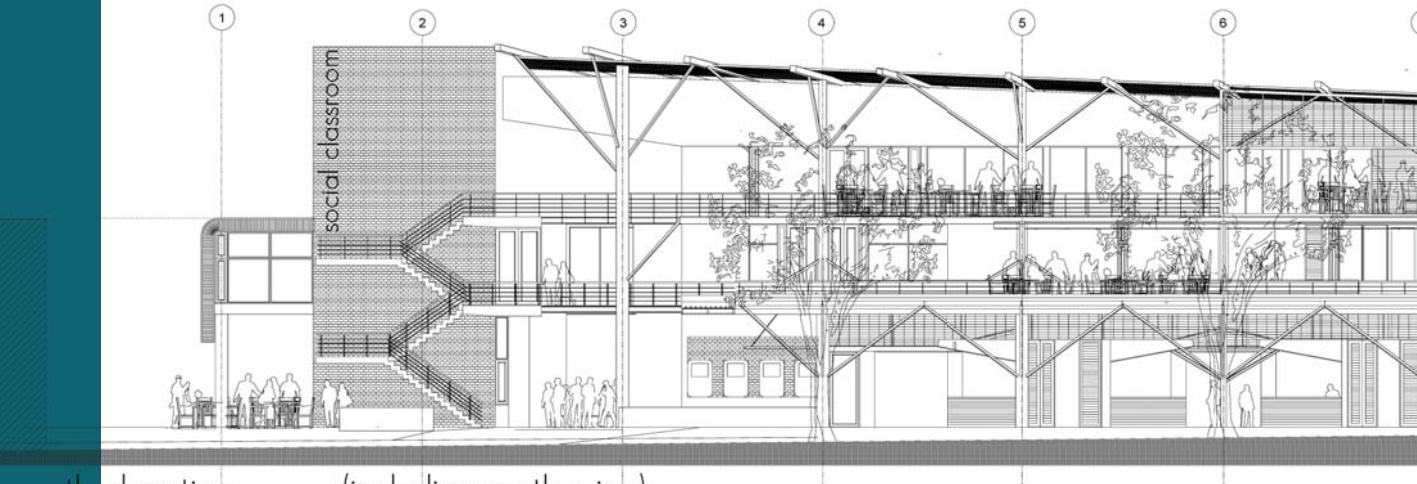
north elevation



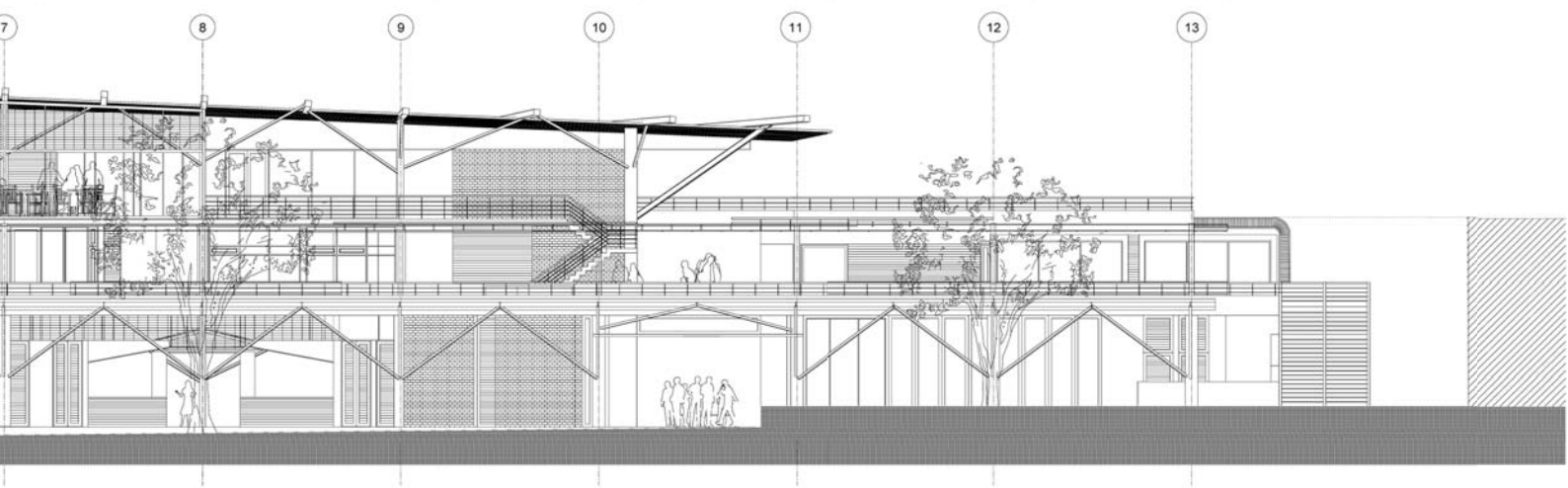
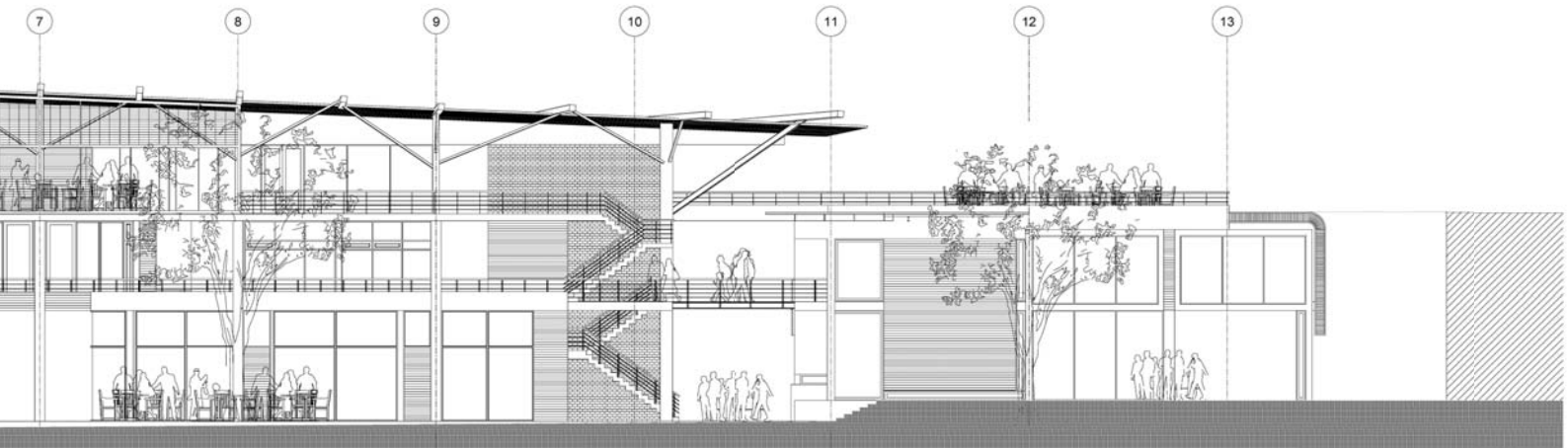
appendix 8.6 sections & elevations 1:350

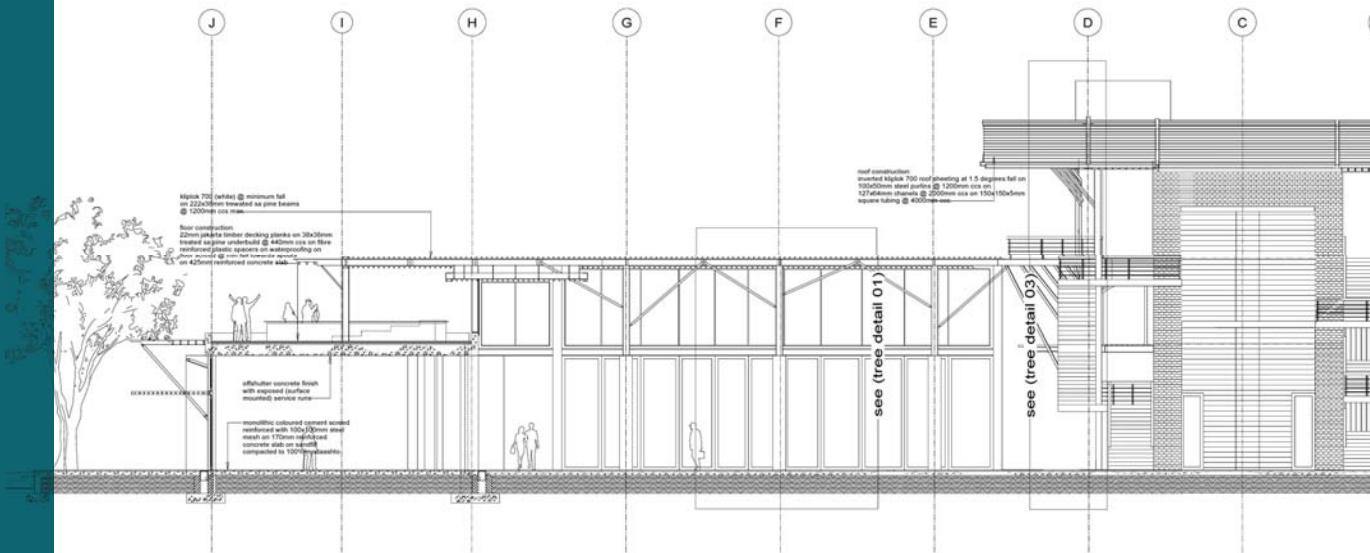


south elevation

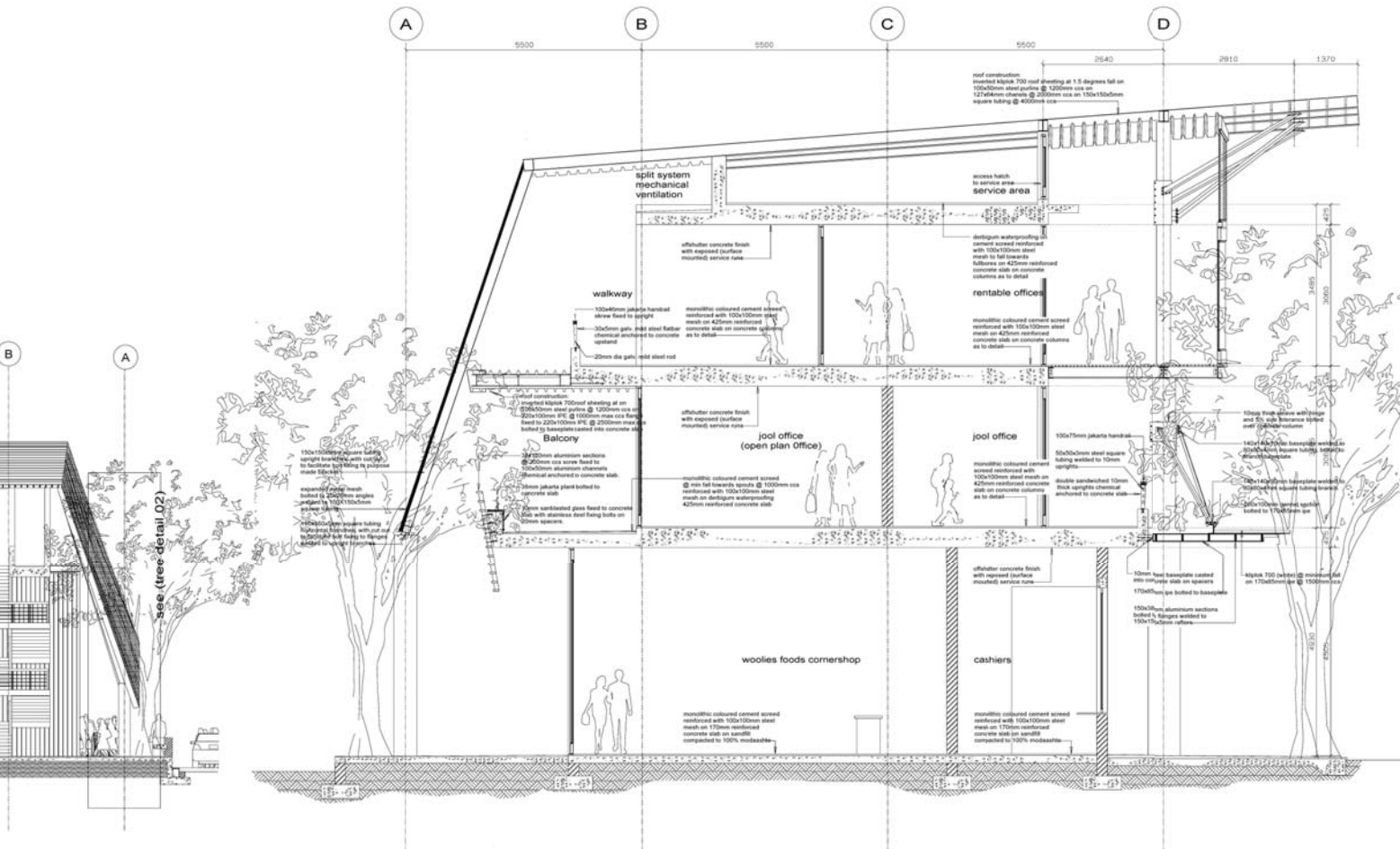


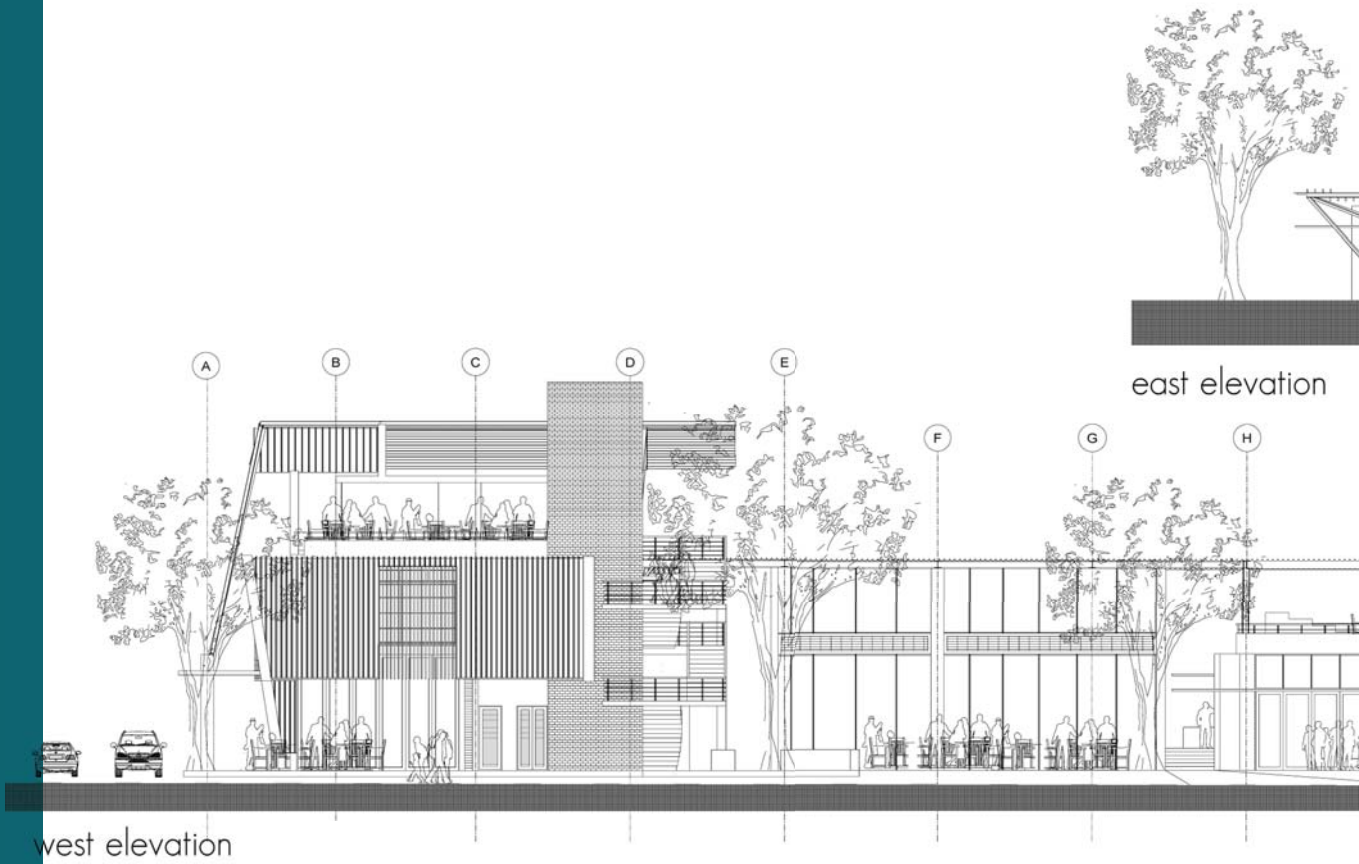
south elevation (including south wing)

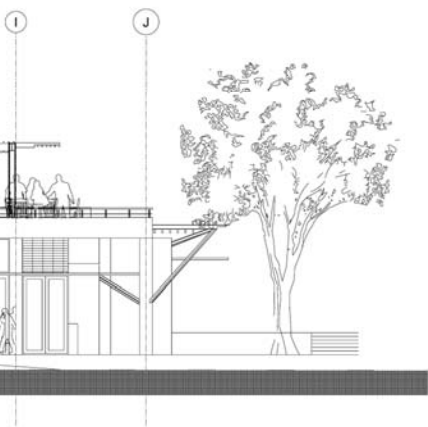
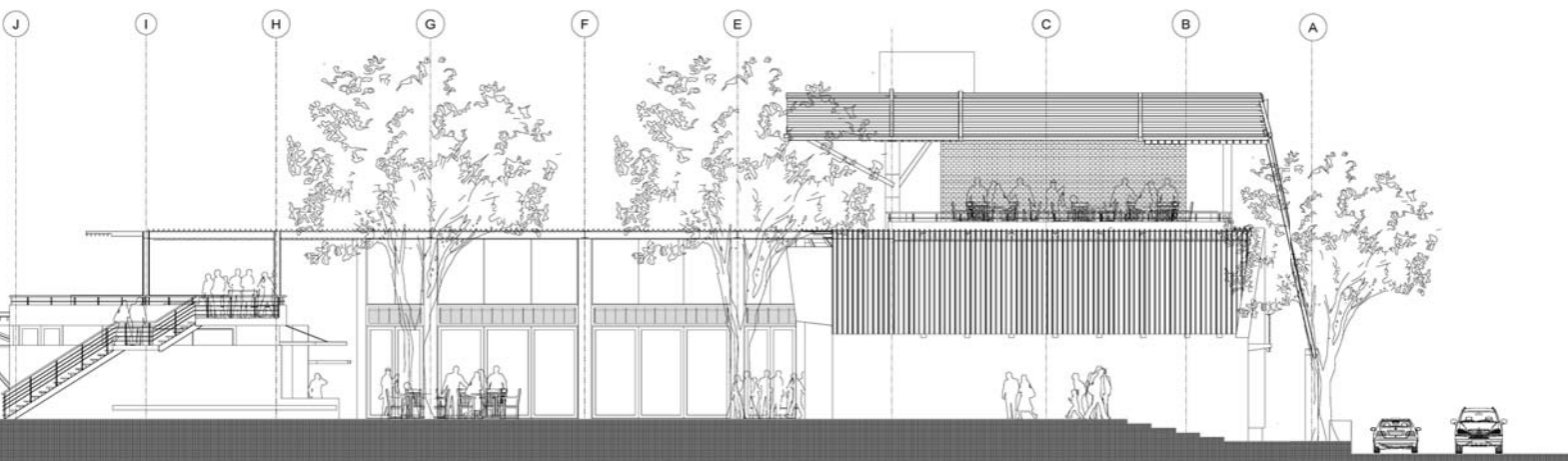




section b-b

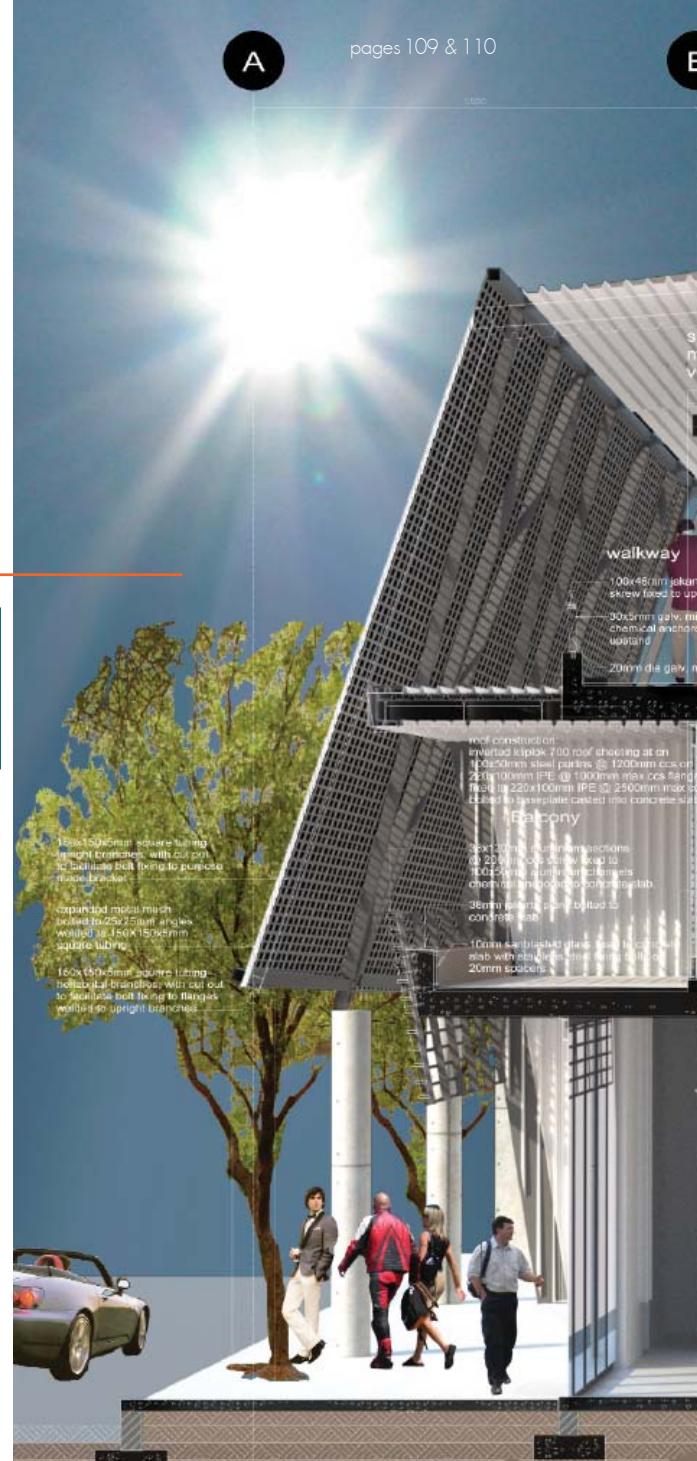






appendix 8.9

Perspective Section C-C





B

C

D

1500 2700 3910 5010 7210 1375

roof construction:
 inverted kilopak 700 roof sheeting at 1.5 degrees fall on
 100x50mm steel purlins @ 1200mm c/c on
 122x64mm channels @ 2100mm c/c on 150x150x5mm
 square tubing @ 4000mm c/c.

split system
 mechanical
 ventilation

access hatch
 to service area
 service area

offshutter concrete finish
 with exposed (surface
 mounted) service runs

double waterproofing on
 cement screed reinforced
 with 100x100mm steel
 mesh to fall towards
 footings on 425mm reinforced
 concrete slab on concrete
 columns as to detail

rentable offices

monolithic coloured cement screed
 reinforced with 100x100mm steel
 mesh on 425mm reinforced
 concrete slab on concrete
 columns as to detail

monolithic coloured cement screed
 reinforced with 100x100mm
 steel mesh on 425mm reinforced
 concrete slab on concrete
 columns as to detail

4000
 3000
 2000

offshutter concrete finish
 with exposed (surface
 mounted) service runs

cool office
 (open plan office)

cool office

monolithic coloured cement screed
 reinforced with 100x100mm steel
 mesh to fall towards sumps @ 1000mm c/c
 reinforced with 100x100mm steel
 mesh on double waterproofing
 425mm reinforced concrete slab

monolithic coloured cement
 screed reinforced with
 100x100mm steel mesh on
 425mm reinforced concrete
 slab on concrete columns
 as to detail

100x75mm jakaris honora

500x23mm steel square
 tube welded to 10mm
 uprights

double sandwiched 10mm
 thick uprights chemical
 anchored to concrete slab

10mm thick sleeve with hinge
 and 5% size tolerance bolted
 over concrete column

140x140x10mm baseplate welded to
 80x80x4mm square tubing, bolted to
 branch baseplate.

140x140x10mm baseplate welded to
 60x60x4mm square tubing branch

200x120mm 6mm dia. bolts
 bolted to 170x95mm p/c

offshutter concrete finish
 with exposed (surface
 mounted) service runs

woolies foods corner shop

cashiers

monolithic coloured cement screed
 reinforced with 100x100mm steel
 mesh on 170mm reinforced
 concrete slab on sandfill
 compacted to 100% modashita

monolithic coloured cement screed
 reinforced with 100x100mm steel
 mesh on 170mm reinforced
 concrete slab on sandfill
 compacted to 100% modashita

10mm steel baseplate casted
 into concrete slab on spacers
 170x95mm p/c bolted to baseplate

100x700 (with 300mm) fall
 on 170x95mm p/c @ 1500mm c/c

140x30mm aluminium sections
 bolted to flanges welded to
 150x150x5mm rafters

4000
 3000
 2000

- Adigard, E and Betsky, A. 2000. **Architecture Must Burn**. California, Gingko Press.
- Alexander, C and Chermayeff, S. 1965. **Community and Privacy: Towards an Architecture of Humanism**. USA, Doubleday and Company Inc.
- Alexander, C. (et al) 1987. Volume 6: **A New Theory of Urban Design**. Oxford, Oxford University Press.
- Alexander, C. 1975. **The Oregon Experiment**. New York, Oxford University Press.
- Burns, C and Kahn, A. 2005. **Site Matters**. New York, Routeledge.
- Davies, L. 2000. **Urban Design Compendium**. English Partnerships. England
- Dewar, D and Uytendogaardt, R.D. 1991. **South African Cities: A Manifesto for Change**. Cape Town, Mills Litho (Pty) Ltd.
- Frampton, K. 1985. **A Critical history of Modern Architecture**. London, Thames and Hudson.
- Koolhaas, R. 1996. **Conversations with students**. New York, Princeton Architectural Press.
- Murphy, R. 1990. **Carlos Scarpa & Castelvechio**. Great Britain, Butler & Tanner.
- Nesbitt, K. 1996. **Theorizing a new agenda for architecture**. New York, Princeton Architectural Press.
- New Architecture: **Essays on Architecture**. Edited by De Valle, S. 2007. London, Papadakis Publisher.
- Righini, P. 2000. **Thinking Architecturally**. Cape Town, University of Cape Town Press.
- Ryker, L. 2007. **Off the Grid Homes**. Utah, Gibbs Smith.
- **Shaping the City**. Edited by E. Robins and R. El-Khoury. 2004. New York, Routledge.
- Tschumi, B. 1994. **Event-Cities Praxis**. London, MIT Press.
- Von Gerkan, M. 1993. **von Gerkan Marg & Partners**. New York, St. Martin's Press.
- Wigley, M. 1993. **The Architecture of Deconstruction: Derrida's Haunt**. London, MIT Press.

Publications:

- Cooke, J. 2007. Icon. Symbol. Glue. January/February 2007. p034
- Cooke, J. 2007. Simply in Place: EPA's New Studio. January/February 2007. p040
- KNIPE, A. 2006. Proud Heritage Clothing Campus. 2005/2006. p138.
- KNIPE, A. 2006. Weavers Nest, Higgovale, Cape Town. 2005/2006. p98.
- KNIPE, A. 2006. Institute for Infectious Disease and Molecular Medicine, University of Cape Town. 2005/2006. p54.
- LOW, I. 2007. Proud Heritage Clothing Campus. 2006/2007. p172.
- LOW, I. 2008. Nashua Kopano Head Office, Woodmead North Office Park, Johannesburg.. 2007/2008. p104.
- LOW, I. 2008. New offices and QC Laboratory for the Biovac Institute. 2007/2008. p104.

Internet:

- South African Weather."Thirty Year Averages" <http://www.saweather.co.za> (17 Augustus 2008)

Other:

- Barker, A. 2006. Unpublished Course notes: Architectural Design Theory. Cape Peninsula University of Technology. Cape Town.
- Robinson, F.2008. Radio Sonder Grense: Volhoubare Onderrig. [09 October 2008, 08:40ar

10 List of Figures

- I. Physical model - Author. 2008)
- II. Physical model - Author. 1.8 Site scenarios - Author. (12 May 2008)
- III. Physical model - Author. 2008)
- IV. Physical model - Author. 1.9 Site scenarios - Author. (12 May 2008)
- V. Diagram - Author.
- VI. Diagram - Author.
- VII. Diagram - Author.
- VIII. Diagram - Author.
- IX. Diagram - Author.
- X. Diagram - Author.
- XI. Old Convent Hall - Author.
- XII. Old Merensky - Afrikaana.(13 March 2008)
- XIII. Old Agriculture - Afrikaana.(13 March 2008)
- XIV. Old Chemistry - Author.
- XV. "Tukkiewerf" - Author.
- XVI. Old Arts - Afrikaana.(13 March 2008)
- XVII. Student centre - Afrikaana.(13 March 2008)

Chapter 01 - Introduction

- 1.1 Site scenarios - Author. (12 May 2008)
- 1.2 Site scenarios - Author. (12 May 2008)
- 1.3 Site scenarios - Author. (12 May 2008)
- 1.4 Site scenarios - Author. (12 May 2008)
- 1.5 Site scenarios - Author. (12 May 2008)
- 1.6 Site scenarios - Author. (12 May 2008)
- 1.7 Site scenarios - Author. (12 May

Chapter 02 - Negotiating a function beyond programme

- 2.1 Humanities building - Author. (15 March 2008)
- 2.2 Kennedy Airport, (Barker, 2006:15)
- 2.3 UCT Sports Centre - Author. (20 June 2006)
- 2.4 Louis Sullivan "Chicago School" (Barker, 2006:21)
- 2.5 "Studente Oord: Church.- Afrikaana (13 March 2008)
- 2.6 KNIPE, A. 2006. Weavers Nest, Higgovale, Cape Town. 2005/2006. p98
- 2.7 KNIPE, A. 2006. Walter Sisulu Square of Dedication. Soweto. 2005/2006. P19
- 2.8 KNIPE, A. 2006. Beau Constance, Constantia. 2005/2006. P220
- 2.9 Houtbay Library - Author (20 June 2006)
- 2.10 KNIPE, A. 2006. Durban Country Club, Halfway House. 2005/2006. P162
- 2.11 UCT Sports Centre - Author. (20 June 2006)
- 2.12 Diagram - Author
- 2.13 Jodidio, P2007. Architecture Now. Taschen, China. 2007. P70
- 2.14 Cooke, J. 2007. Icon. Symbol. Glue. January/February 2007. p34

2.15	Diagram - Author	2008)
2.16	Diagram - Author	3.21
Chapter 03 - Context analysis		3.22
3.1	Arial Photo, Main campus - Afrikaana. (13 March 2008)	(13 March 2008)
3.2	Arial Photo, Main campus - Afrikaana. (13 March 2008)	3.23
3.3	Arial Photo, Main campus - Afrikaana. (13 March 2008)	(13 March 2008)
3.4	The Campus District - Author	3.24
3.5	Photo Montage - Author (06 March 2008)	(13 March 2008)
3.6	Newspaper Article - Afrikaana. (13 March 2008)	3.25
3.7	Diagram - Author	(13 March 2008)
3.8	Diagram - Author	3.26
3.9	Spar Street Atlas, 2007. P27	(13 March 2008)
3.10	Connections - Author	3.27
3.11	Site Diagram - Author	(13 March 2008)
3.12	Site linkage - Author. (06 March 2008)	3.28
3.13	Site linkage - Author. (06 March 2008)	(13 March 2008)
3.14	Site linkage - Author. (06 March 2008)	3.29
3.15	Site linkage - Author. (06 March 2008)	(13 March 2008)
3.16	Site linkage - Author. (06 March 2008)	3.30
3.17	Site linkage - Author. (06 March 2008)	(13 March 2008)
3.18	Site linkage - Author. (06 March 2008)	
3.19	Site linkage - Author. (06 March 2008)	
3.20	Site linkage - Author. (06 March	

Chapter 04 - Urban structure

4.1	Urban Structure? - Author (06 March 2008)
4.2	Walking Campus - Author
4.3	Diagram - Author
4.4	Diagram - Author
4.5	Activity Centres - Author
4.6	Landmarks - Author
4.7	Admin Building - Afrikaana. (13 March 2008)
4.8	Humanities Building - Author (06 March 2008)
4.9	Engineering Building - Afrikaana. (13 March 2008)

Chapter 05 - Conception

5.1	Site plan - Author
5.2	Site plan - Author
5.3	Author - (06 March 2008)
5.4	Author - (06 March 2008)
5.5	Building lines - Author
5.6	Author - (06 March 2008)
5.7	Author - (06 March 2008)
5.8	Author - (06 March 2008)
5.9	Author - (06 March 2008)
5.10	Author - (06 March 2008)
5.11	Corcura, A. 2006. Contemporary Houses. Könemann. 2006. p453

Chapter 06 - Design Development

6.1	Sketch - Author
6.2	Sketch - Author
6.3	Sketch - Author
6.4	Site plan - Author
6.5	Design development - Author
6.6	Ground floor plan - Author
6.7	1st floor plan - Author
6.8	2nd floor plan - Author
6.9	Roof plan - Author
6.10	Diagram - Author
6.11	Diagram - Author
6.12	Diagram - Author
6.13	Author - (06 March 2008)
6.14	Author - (06 March 2008)
6.15	Author - (06 March 2008)
6.16	Diagram - Author
6.17	Sketch - Author
6.18	Feeder routes - Author
6.19	Edges - Author
6.20	Diagram - Author

6.21	Diagram - Author	7.14	Author - (18 August 2008)	7.49	Sketch detail 01 - Author
6.22	Diagram - Author	7.15	Author - (18 August 2008)	7.50	Sketch detail 01 - Author
6.23	Diagram - Author	7.16	Author - (18 August 2008)	7.51	3d Section - Author
6.24	Diagram - Author	7.17	Author - (18 August 2008)	7.52	Sun study Jan - Author
6.25	Diagram - Author	7.18	Author - (18 August 2008)	7.53	Sun study Feb - Author
6.26	Diagram - Author	7.19	Author - (18 August 2008)	7.54	Sun study Mar- Author
6.27	Diagram - Author	7.20	Author - (18 August 2008)	7.55	Sun study Apr - Author
6.28	Author - (06 March 2008)	7.21	Author - (18 August 2008)	7.56	Sun study May - Author
6.29	Author - (06 March 2008)	7.22	Author - (18 August 2008)	7.57	Sun study Jun - Author
6.30	Diagram - Author	7.23	Author - (18 August 2008)	7.58	Sun study Jul - Author
6.31	Diagram - Author	7.24	South elevation - Author	7.59	Sun study Aug - Author
6.32	Diagram - Author	7.25	North Elevation - Author	7.60	Sun study Sept - Author
6.33	Diagram - Author	7.26	Structural model - Author	7.61	Sun study Oct - Author
6.34	Diagram - Author	7.27	Ground floor plan 1:500 - Au-	7.62	Sun study Nov - Author
6.35	Diagram - Author	7.28	thor	7.63	Sun study Dec - Author
6.36	Diagram - Author	7.28	Section A-A 1:200 - Author	7.64	Stormwater plan 1:500 - Author
6.37-6.58	Images of physical models - Au-	7.29	Section B-B 1:200 - Author	7.65	Thirty Year ave. As per South Afri-
6.59-6.73	Images of electronic model -	7.30	Tree detail 01 1:50 - Author	7.65	can Weather Services. www. saweather.
	Author	7.31	Tree detail 02 1:20 - Author	7.65	co.za (20 July 2008)
		7.32	Tree detail 02 1:50 - Author	7.66	Water storage Tank - Author
		7.33	Tree detail 02 1:20 - Author	7.67	Plan - Water storage - Author
		7.34	3D Column detail - Author	7.68	Refuse removal strategy plan
		7.35	3D Column detail - Author	7.68	1:500 - Author
		7.36	Tree detail 03 - Author	7.69	Fire protection - Ground floor
		7.37	3D Column detail - Author	7.69	plan 1:500 - Author
		7.38	3D Column detail - Author	7.70	Fire protection - 1st floor plan
		7.39	3D Column detail - Author	7.70	1:500 - Author
		7.40	Tree detail 04 1:20 - Author	7.71	Fire protection - 2nd plan 1:500 -
		7.41	3D Column detail - Author	7.71	Author
		7.42	3D Column detail - Author	7.72	Drainage lay-out - Ground floor
		7.43	Mentis grating as per Mentis	7.72	plan 1:500 - Author
		7.43	catalogue	7.73	Drainage lay-out - 1st floor plan
		7.44	Structural model - Author	7.73	1:500 - Author
		7.45	3D Column detail - Author	7.74	Drainage lay-out - 2nd floor plan
		7.46	Sketch detail 01 - Author	7.74	1:500 - Author
		7.47	Sketch detail 01 - Author	7.75	Solar Strategy - Author
		7.48	Sketch detail 01 - Author	7.76	Ryker, L. 2007. Off the Grid

Chapter 07 - Conceptualizing technology

7.1	Diagram - Author
7.2	Diagram - Author
7.3	Diagram - Author
7.4	Wire diagram - Author
7.5	Author - (18 August 2008)
7.6	Author - (18 August 2008)
7.7	Author - (18 August 2008)
7.8	Author - (18 August 2008)
7.9	Author - (18 August 2008)
7.10	Author - (18 August 2008)
7.11	Author - (18 August 2008)
7.12	Author - (18 August 2008)
7.13	Author - (18 August 2008)

Homes. Utah, Gibbs Smith. P55
7.77 Roof plan 1:500 - Author
7.78 Western view at night - Author
7.79 Northern view at night - Author
7.80 Ryker, L. 2007. Off the Grid
Homes. Utah, Gibbs Smith. P87
7.81 LOW, I. 2008. Nashua Kopano
Head Office, Woodmead North Office
Park, Johannesburg.. 2007/2008. p104.
7.82 LOW, I. 2007. Proud Heritage
Clothing Campus. 2006/2007. p172.

7.83 LOW, I. 2007. Proud Heritage
Clothing Campus. 2006/2007. p172.
7.84 Cooke, J. 2007. Simply in Place:
EPA's New Studio. January/February 2007.
p040
7.85 LOW, I. 2008. New offices and
QC Laboratory for the Biovac Institute.
2007/2008. p104.
7.86 Tree House01, [www.vandermer-
wemizevski.co.za](http://www.vandermer-wemizevski.co.za) (15 September 2008)
7.87 Tree House02, [www.vandermer-
wemizevski.co.za](http://www.vandermer-
wemizevski.co.za) (15 September 2008)
7.88 Tree House03, [www.vandermer-
wemizevski.co.za](http://www.vandermer-
wemizevski.co.za) (15 September 2008)
7.89 LOW, I. 2008. New offices and
QC Laboratory for the Biovac Institute.
2007/2008. p104.
7.90 LOW, I. 2008. Nashua Kopano
Head Office, Woodmead North Office
Park, Johannesburg.. 2007/2008. p104.
7.91 LOW, I. 2007. Proud Heritage
Clothing Campus. 2006/2007. p172.
7.92 LOW, I. 2007. Proud Heritage
Clothing Campus. 2006/2007. p172. ■

11

About the author



By Maretha Perold a friend in architecture

Francois was born in Bellville in the Western Cape Province in 1978. On completion of his high school career he embarked on a two year journey of international traveling prior to his pursuit of an education in architecture. He enrolled at the Cape Peninsula University of Technology (CPUT) where he completed the three year National Diploma in Architectural Technology in 2000. During the four years thereafter he gained valuable experience while working for the Durbanville based architecture firm, Schabert & Nothnagel. His desire to be an architect encouraged him to further his studies and in 2006 he successfully completed his B Tech Applied Design degree at CPUT. During that year his social housing project was awarded the second place in the SHIFT Social Housing Competition. The project became an attestation of his awareness and concern for the social conditions in South Africa and the obligation for architecture to consistently contribute positively to the social aspects of communities and their inhabitants. He completed his B Arch (Hons) degree at the University of Pretoria in 2007 and his M Arch (Prof) in 2008.

The past three years of studies played a significant role in his development as a designer and in the establishment of his architectural attitude. His well-considered concepts are based on sound theoretical philosophies combined with a humanistic approach. His principle that any project should reflect function beyond program contributes to his designs being user orientated and contextually responsive. The four matrices of architecture namely form, function, technology and context further serves as criteria to accomplish a holistically resolved product in all his designs.

Apart from his commitment to architecture he also believes in maintaining a healthy, balanced lifestyle. His interest to take part and compete in various sporting activities and undertake the Iron Man Challenge in the near future indicates discipline and perseverance, aspects significant in his work as well.

In the years as fellow student and friend his ambition for and dedication to architecture has truly been of great inspiration and motivation to me and surely many others.