



10



a p p e n d i c e s

population statistics...

Gauteng is divided into various wards where Pretoria's CBD falls within wards 3, 58 and 60.

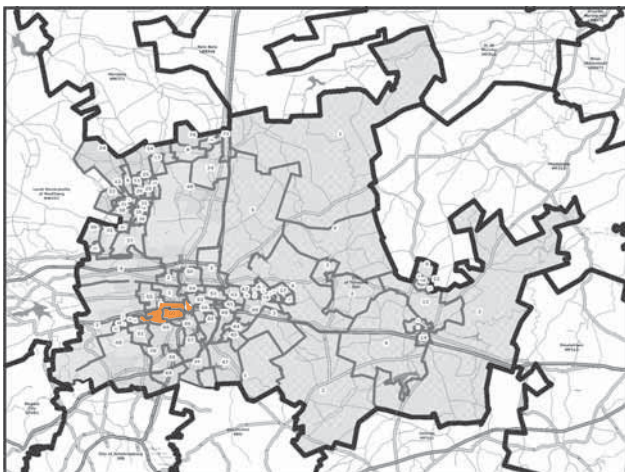


figure 10.1 ward map

ward 3

GENDER BY AGE

Persons	1996	2001	% change
Males - 0 to 4	1091	1122	2.84
Males - 5 to 14	1786	2166	21.28
Males - 15 to 34	11804	12456	5.52
Males - 35 to 64	5803	6432	10.84
Males - Over 65	510	471	-7.65
Females - 0 to 4	1037	1056	1.83
Females - 5 to 14	1736	2208	27.19
Females - 15 to 34	6132	8025	30.87
Females - 35 to 64	3726	4512	21.10
Females - Over 65	732	561	-23.36
Males - Total	20994	22646	7.87
Females - Total	13363	16359	22.42

AGE

Persons	1996	2001	% change
0 to 4	2112	2178	3.13
5 to 14	3551	4371	23.09
15 to 34	18134	20481	12.94
35 to 64	9495	10944	15.26
Over 65	1296	1032	-20.37

MODE OF TRAVEL TO WORK OR SCHOOL

Persons	1996	2001	% change
Bicycle	-	285	-
Bus	-	5001	-
Car driver	-	5601	-
Car passenger	-	4017	-
Minibus/Taxi	-	1875	-
Motorcycle	-	159	-
Train	-	762	-
NA	-	13137	-
Foot	-	7953	-
Other	-	216	-

GENDER BY AGE

Persons	1996	2001	% change
Males - 0 to 4	521	642	23.22
Males - 5 to 14	758	1089	43.67
Males - 15 to 34	5427	7461	37.48
Males - 35 to 64	2334	2862	22.62
Males - Over 65	717	606	-15.48
Females - 0 to 4	566	660	16.61
Females - 5 to 14	733	1062	44.88
Females - 15 to 34	6211	8085	30.17
Females - 35 to 64	2933	3228	10.06
Females - Over 65	1944	1455	-25.15
Males - Total	9757	12662	29.77
Females - Total	12387	14490	16.98

AGE

Persons	1996	2001	% change
0 to 4	1094	1302	19.01
5 to 14	1508	2154	42.84
15 to 34	11627	15546	33.71
35 to 64	5264	6093	15.75
Over 65	2688	2061	-23.33

MODE OF TRAVEL TO WORK OR SCHOOL

Persons	1996	2001	% change
Bicycle	-	222	-
Bus	-	3663	-
Car driver	-	4947	-
Car passenger	-	2289	-
Minibus/Taxi	-	1377	-
Motorcycle	-	132	-
Train	-	387	-
NA	-	7368	-
Foot	-	6648	-
Other	-	120	-

GENDER BY AGE

Persons	1996	2001	% change
Males - 0 to 4	455	441	-3.08
Males - 5 to 14	641	819	27.77
Males - 15 to 34	4029	6690	66.05
Males - 35 to 64	1838	1752	-4.68
Males - Over 65	267	174	-34.83
Females - 0 to 4	466	465	-0.21
Females - 5 to 14	646	813	25.85
Females - 15 to 34	4120	7272	76.50
Females - 35 to 64	1797	1698	-5.51
Females - Over 65	687	426	-37.99
Males - Total	7230	9875	36.58
Females - Total	7716	10670	38.28

AGE

Persons	1996	2001	% change
0 to 4	927	906	-2.27
5 to 14	1303	1629	25.02
15 to 34	8175	13959	70.75
35 to 64	3647	3450	-5.40
Over 65	1004	600	-40.24

MODE OF TRAVEL TO WORK OR SCHOOL

Persons	1996	2001	% change
Bicycle	-	102	-
Bus	-	2781	-
Car driver	-	1446	-
Car passenger	-	819	-
Minibus/Taxi	-	1440	-
Motorcycle	-	45	-
Train	-	819	-
NA	-	5298	-
Foot	-	7701	-
Other	-	93	-

gauteng provincial government: early childhood development strategy

The following excerpts from the Early Childhood Development [ECD] Strategy were chosen for being most applicable to the pre-school proposal.

Introduction and Background

The early years of a child's growth and development are crucial for health, well being and success in later life. Government policy recognises this, and also recognises that the socioeconomic context of many South African children militates against their adequate development in childhood. A concerted effort by government is needed to combat the adverse factors that arise from historical race-based discrimination and related poverty. Currently, however, different government structures, including provincial departments and municipalities, have dispersed responsibilities with regard to the well being and development of children in the province. A primary purpose of the Gauteng ECD Strategy is to ensure that these diverse services are experienced on the ground as an integrated package of comprehensive, efficiently delivered support. This package includes services related to education, social development, health and nutrition, sport, arts, recreation and culture, and community safety.

Situation Analysis

Access to such ECD services is still very uneven as a result of historical race-based discrimination. The Gauteng Department of Education has made considerable progress in phasing in Grade R at public schools in the province, but much still needs to be done to redress the imbalances in ECD provision, and to ensure that the 1.1 million children who are not enrolled in any programme prior to Grade R receive the support they need. The quality of this support is also a serious concern, as ECD sites in informal urban areas score markedly lower on measures of infrastructure, quality of programme and training and experience of

educators. Home-based ECD sites, which account for 42% of ECD enrolment, are also a concern in terms of quality of provision. As we work towards our target of subsidising 25% of children by 2010-11, we must take account of these quantitative and qualitative discrepancies in provision.

The Demographics of ECD Provision in Gauteng

In the implementation of this strategy it will be important to understand the demographic profile of children in Gauteng, and in particular the number and distribution of children that require targeted interventions in the form of subsidies, nutritional programmes and other interventions. However, it must be noted that different structures of government currently collect data for different purposes and in different formats. Also, data discrepancies arise as a result of the different definitions of ECD and ECD sites that are currently in use – for example, the distinction between a 'community-based' site and a 'privately funded' site, or the classification of sites that are largely privately funded as 'public' because they receive some support from public funds. Nevertheless, it is possible to provide an indicative picture of current ECD activities and the challenges in terms of attaining effective provision of ECD services in the future. Gauteng had 236,523 learners enrolled in ECD centres in 2000, which amounted to 24% of the child population aged 0 to 6 years. Most of these children are poor, and mothers and grandmothers are often the caregivers, with many households headed by children.

The largest proportion of learners in ECD (47%) is enrolled in community-based sites, although these sites make up only 32% of all sites. While the majority of ECD centres are home-based sites, only 42% of ECD learners attend these sites. Eleven percent of learners attend school-based ECD centres; most of the learners in school-based sites are enrolled in Grade R.

The National Policies and Programmes [NPA] Framework emphasises the following policy priorities:

- _ nutrition, child and maternal health
- _ water and sanitation
- _ early childhood education and basic education
- _ social welfare development [family environment, out-of-home-care and social security]
- _ leisure and cultural activities
- _ child protection measures
- _ general measures for implementing and sustaining commitment to the national programme of action.

The guiding principles outlined in the document are as follows:

- Put children first. In all actions related to children, the best interests of the child shall be a primary consideration.
- Leave no child behind. Each girl and boy is born free and equal in dignity and rights: therefore, all forms of discrimination affecting children must end
- Listen to children and ensure their participation. Children and adolescents are resourceful citizens, capable of helping to build a better future for all. We must respect their right to express themselves and to participate in all matters affecting them, in accordance with their age and maturity.

The objectives outlined in the document are the following:

- Eradicate poverty: invest in children. We reaffirm our vow to break the cycle of poverty within a single generation, united in the conviction that investments in children and the realisation of their rights are among the most effective ways to eradicate poverty. Immediate action must be taken to eliminate the worst forms of child labour.

•Care for every child. Children must get the best possible start in life. Their survival, protection, growth and development in good health and with proper nutrition are the essential foundation of human development. We will make concerted efforts to fight infectious diseases, tackle major causes of malnutrition and nurture children in a safe environment that enables them to be physically healthy, mentally alert, emotionally secure, socially competent and able to learn.

•Educate every child. All girls and boys must have access to and complete primary education that is free, compulsory and of good quality as a cornerstone of an inclusive basic education. Gender disparities in primary and secondary education must be eliminated.

•Protect children from harm and exploitation. Children must be protected against any acts of violence, abuse, exploitation and discrimination, as well as forms of terrorism and hostage taking.

•Protect children from war. Children must be protected from the horrors of armed conflict. Children under foreign occupation must also be protected, in accordance with the provisions of international humanitarian law.

•Protect the earth for children. We must safeguard our natural environment, with its diversity of life, its beauty and its resources, all of which enhance the quality of life, for present and future generations. We will give every assistance to protect children and minimise the impact of natural disasters and environmental degradation on them.



CONSOLIDATED TITLE DIAGRAM

SIDES Metres		ANGLES OF DIRECTION
AB	36,84	A 90 00 00
BC	69,27	B 90 00 00
CD	55,33	C 90 00 00
DE	37,98	D 90 15 00
EF	18,65	E 89 59 30
FA	31,61	F 77 45 30

S.G. No. A 901/78

Approved
H.C. Frank-Schultz
for Surveyor General.
20-3-1978

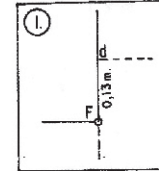
CONSOLIDATED TITLE DIAGRAM

S.G. No. A 901/78

THIS DIAGRAM CONSISTS OF 2 SHEETS
SHEET NO. 2.

Approved
H.C. Frank-Schultz
Surveyor-General.
20-3-1978

INSET. SCALE 1:10



NO.	FIGURE	DESCRIPTION	DIAGRAM S.G. NO.	TRANSFER NO.
1.	A.B.b.a.	PORTION 3 OF ERF NO. 852	A 479/13	1815/1913
2.	a.b.g.d.	REMAINDER OF ERF NO. 852		200/1878
3.	f.g.C.h.	REMAINDER OF PORTION 2 OF ERF NO. 852		2652/1889
4.	e.f.h.i.	PORTION 4 OF ERF NO. 852		1125/1895
5.	d.e.i.k.	PORTION 1 OF ERF NO. 852		2693/1888
6.	E.F.k.D.	PORTION 1 OF ERF NO. 876		295/1889



THIS DIAGRAM CONSISTS OF 2 SHEETS
SHEET NO. 1:

SCALE 1:1000

The figure A. B. C. D. E. F.

represents 3250 SQUARE METRES

ERF NO. 3216

of land being
COMPRISED OF THE PORTIONS STATED ABOVE
PRETORIA TOWNSHIP, DISTRICT PRETORIA.

Province of Transvaal

Surveyed in - COMPILED IN FEBRUARY 1978.

by me
H.C. Frank-Schultz

H.C. FRANK-SCHULTZ Land Surveyor.

This diagram is annexed to

No.
d.d.
i.f.o.

T27679/1979

Registrar of Deeds

The original diagrams are

No. as stated above

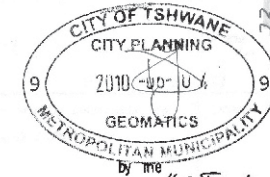
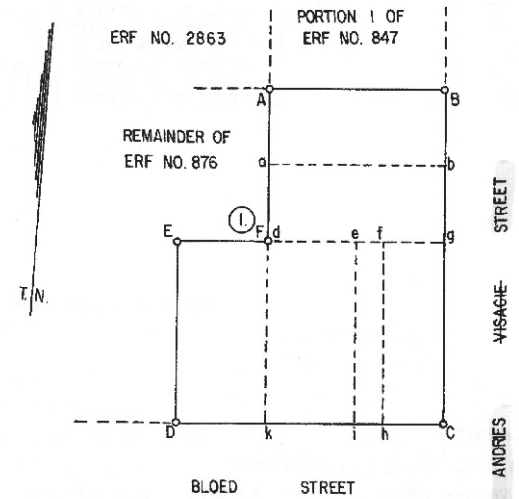
Transfer-Grant

General Plan S.G. No. A

File

S.R. No.

Comp. JR 5C-24/D2
TP 629



by me
H.C. Frank-Schultz
H.C. FRANK-SCHULTZ Land Surveyor.

COMPILED IN FEBRUARY 1978.

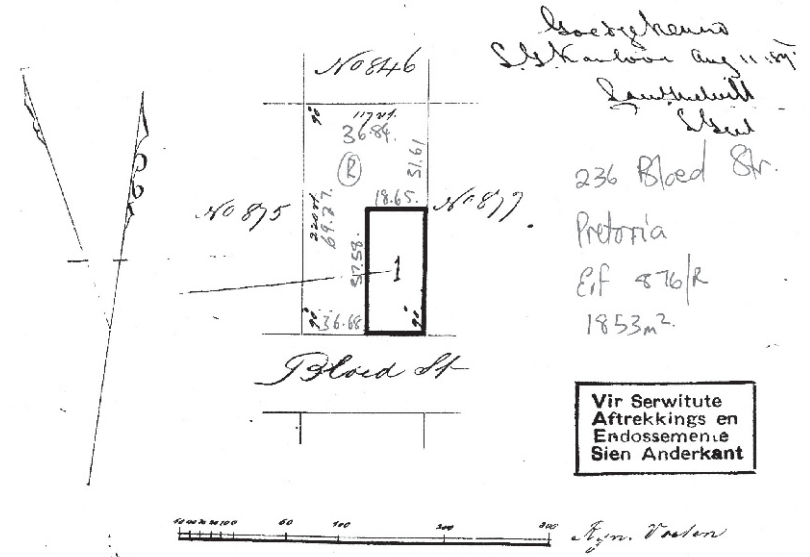
figure 10.2



STAD PRETORIA, 10752/1875.

uid-Afrikaansche Republiek.

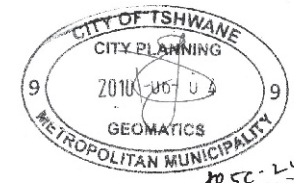
ERF No. 876



*Boedelykenna
St. Kerkweg 111
Landboubed
Stad
236 Bloed Str.
Pretoria
Erf 876/R
1853m².*

*De voorgaande Figuur vertegenwoordigt Erf No. 876. bevattende 178 Vier-
ante Hoeken 108. Vierkante Voeten, gelegen in de Stad Pretoria, en grenzende:*

- Noordwaarts Erf No 846*
- Westwaarts Erf No 875*
- Zuidwaarts Bloed St.*
- Oostwaarts Erf No 877*



Gemeten door mij

A. A. Walker
Gowts. Landmeter.

Pretoria, *Maart* 1876.

figure 10.3



11_1



list of figures

figure 1.1_ Photograph of a painting of Pretoria's city skyline. Artist unknown.

figure 1.2_ Profile of children at play. [Dattner 1974: book cover]

figure 1.3_ Children on climbing equipment. [Online]. Available at:
<http://www.cbc.ca/health/story/2009/07/23/sleep-children-exercise.html>

figure 1.4_ Children climbing on hill. [Online]. Available at:
http://www.flickr.com/photos/hughes_leglise/169515387/

figure 1.5_ Children participating in water play. [Online]. Available at:
http://www.cmsignation.co.za/uploadimages/images_179/jse_DSC02731.jpg

figure 1.6_ Child playing with building blocks. [Online]. Available at:
[http://www.shropshire.gov.uk/res.nsf/7476675A2506156880257536003ACC40/\\$file/young%20child%20playing.jpg](http://www.shropshire.gov.uk/res.nsf/7476675A2506156880257536003ACC40/$file/young%20child%20playing.jpg)

figure 3.1_ Children interacting with water feature. [Gaventa 2006: 8]

figure 3.2_ Phases and types of play of the different age groups adapted from [Dattner 1974: 24-29]

figure 3.3_ Picture encouraging interaction with the landscape. [Gaventa 2006: 84]

figure 3.4_ Playground attached to school. [Hurtwood 1968: 106]

figure 3.5_ Promenade in New York. [Dattner 1974: 123]

figure 3.6_ Neighbourhood playground in New York [Dattner 1974: 99]

figure 3.7_ Seating provided for the public. [Gaventa 2006: 109]

figure 4.1_ Plan. [O]. Available at: <http://www.archdaily.com/6987/skanderborggade-day-care-centre-dorte-mandrup/>

figure 4.2_ Section. [O]. Available at: <http://www.archdaily.com/6987/skanderborggade-day-care-centre-dorte-mandrup/>

figure 4.3_ Climbing ramp to upper floor. [Child's Play 2009]

figure 4.4_ Ramp to upper floor. [Child's Play 2009]

figure 4.5_ Porthole windows with multiple uses for display or sitting in. [Child's Play 2009]

figure 4.6_ Elevation of Dragen Children's House. [Child's Play 2009]

figure 4.7_ Plan. [O]. Available at: [http://www.archdaily.com/6987/skanderborggade-](http://www.archdaily.com/6987/skanderborggade-day-care-centre-dorte-mandrup/)

[day-care-centre-dorte-mandrup/](http://www.archdaily.com/6987/skanderborggade-day-care-centre-dorte-mandrup/)

figure 4.8_ Section. [O]. Available at: <http://www.archdaily.com/6987/skanderborggade-day-care-centre-dorte-mandrup/>

figure 4.9_ Roof playscape of Day-care Centre. [Brighten up the Neighbourhood. 2009]

figure 4.10_ Pathway on roof playscape of Day-care Centre. [Brighten up the Neighbourhood. 2009]

figure 4.11_ Exterior Ramp to roof of Day-care Centre. [Brighten up the Neighbourhood. 2009]

figure 4.12_ Play equipment on roof of Day-care Centre. [Brighten up the Neighbourhood. 2009]

figure 4.13_ model showings a central axis circulation of Infant Educational Centre.[O]. Available at: <http://www.openbuildings.com/buildings/infant-educational-centre-profile-1221.html>

figure 4.14_ Exterior view of Infant Educational. [Etherington 2010]

figure 4.15_ Protruding roof feature over play space. [Etherington 2010]

figure 4.16_ Articulation of building to exterior. [Etherington 2010]

figure 4.17_ Educational vegetable garden. [Etherington 2010]

figure 4.18_ Plan and sections of Delft Day-care Centre. [Day-care Centre, Delft South. 2002]

figure 4.19_ Seating wall of Delft Day-care Centre. [Day-care Centre, Delft South I. 2002]

figure 4.20_ Solar shading of Delft Day-care Centre. [Day-care Centre, Delft South I. 2002]

figure 4.21_ Exterior view of Delft Day-care Centre. [Day-care Centre, Delft South I. 2002]

figure 4.22_ Classroom and playground divisions in Delft Day-care Centre. [Day-care Centre, Delft South I. 2002]

figure 4.23_ Plan and sections of Delft Day-care Centre. [Day-care Centre, Delft South II. 2002]

figure 4.24_ Orientation beacon in Delft Day-care Centre. [Day-care Centre, Delft South II. 2002]

figures 4.25 and 4.46_ Exterior views of Delft Day-care Centre. [Day-care Centre, Delft South II. 2002]

figure 4.27 and 4.28_ Internal views of roof and roof-lights at St Cyprians' Pre-School [New Pre-school & Sports Centre for St Cyprians' School.1999]

figure 4.29_ View of landscaping at St Cyprians' Pre-School [New Pre-school & Sports Centre for St Cyprians' School.1999]

figure 4.30_ Corridor at St Cyprians' Pre-School [New Pre-school & Sports Centre for St Cyprians' School.1999]

figure 4.31_ Hand washing feature at St Cyprians' Pre-School [New Pre-school & Sports Centre for St Cyprians' School.1999]

figure 5.1_ Figure ground showing focus area. [M. Pienaar]

figure 5.2_ Sketch [D. Saunders, 2010]

figure 5.3_ Aerial photograph showing connectivity proposals. [University of Pretoria Department of Geography]

figure 5.4_ Aerial photograph showing precincts. zoning and interventions. [University of Pretoria Department of Geography]

figure 5.5_ Aerial photograph showing pedestrian walkway. [University of Pretoria Department of Geography]

figure 5.6_ 3D view looking east. [A. Haasbroek, 2010]

figure 5.7_ perspective of pedestrian walkway. [Author, 2010]

figure 5.8_ Aerial photograph showing activity node. [University of Pretoria Department of Geography]

figure 5.9_ Perspective of Bloed Street Mall node. [Author, 2010]

figure 5.10_ Aerial photograph showing Marabastad. [University of Pretoria Department of Geography]

figure 5.11_ Sketches of Marabastad development. [Aziz Thayob Partnership]

figure 5.12_ Aerial photograph showing ring road. [University of Pretoria Department of Geography]

figure 5.13_ 3D view looking south down Paul Kruger Street. [A. Haasbroek, 2010]

figure 5.14_ Sketch of Paul Kruger Street. [C. Whitcomb, 2010]

figure 5.15_ Sketch of public square. [C. Whitcomb, 2010]

figure 5.16_ Aerial photograph showing public squares. [University of Pretoria Department of Geography]

figure 5.17_ 3D view of public square at Belle Ombre Station. [A. Haasbroek, 2010]

figure 5.18_ Sketch of public square at Belle Ombre Station. [C. Whitcomb, 2010]

figure 5.19_ [Online] Available at: <http://vladstudio.deviantart.com/art/Typographic-World-Map-106395788>

figure 5.20_ Locality diagrams. [Smalberger 2007]

figure 5.21_ Figure ground showing site location. [M. Pienaar]

figure 5.22_ Photograph of street sign. [Author 2010]

figure 5.23_ Growth of Pretoria. [Urbs Quadrata]

figure 5.24_ Figure ground showing Church Square and axis. [M. Pienaar]

figure 5.25_ Mapping Studies. [Author 2010]

figure 5.26_ Existing structures. [Author 2010]

figure 5.27_ Usage. [Author 2010]

figure 5.28_ Height restrictions. [Author 2010]

figure 5.29_ Historical value. [Author 2010]

figure 5.30_ Services. [Author 2010]

figure 5.31- 5.34_ 3D views of the site and context. [Google Earth]

figures 5.25 and 5.26_ block divisions and usage. [Tshwane Municipality]

figure 5.27_ Context analysis. [Author 2010]

figures 5.28 and 5.29_ Aerial photographs showing vehicular and pedestrian traffic. [University of Pretoria Department of Geography]

figures 5.30 and 5.31_ Street photographs. [Author 2010]

figure 5.32_ Collage of context photographs. [Author 2010]

figure 6.1_ Signage photograph. [Author 2010]

figure 7.1_ Anthropometrics. [Dattner 1974: 138]

figure 7.2_ Tartan grid. [Author 2010]

figure 7.3_ Extending diagram. [Author 2010]

figure 7.4_ Concept sketch. [Author 2010]

figure 7.5_ Site grid. [Author 2010]

figure 7.6_ Pretoria's grid [Urbs Quadrata]

figure 7.7_ Green screen. [Gaventa 2006]

figure 7.8_ Connectivity bubble diagram. [Author 2010]

figure 7.9_ Concept model. [Author 2010]

figure 7.10_ Concept model. [Author 2010]

figure 7.11_ Sketch plan. [Author 2010]

figure 7.12_ 3D views. [Author 2010]

figure 7.13_ Extending field of play diagram. [Author 2010]

figure 7.14_ Sketch plans. [Author 2010]

figure 7.15_ Sketch sections. [Author 2010]

figure 7.16_ Sketch plan. [Author 2010]

figure 7.17_ 3D view. [Author 2010]

figure 7.18_ Diagrammatic sections. [Author 2010]

figure 7.19_ Sketches exploring roof structure. [Author 2010]

figure 7.20_ Landscaping sketch. [Author 2010]

figure 7.21_ 3D views of second proposal. [Author 2010]

figure 7.22_ Proposal of office block. [Author 2010]

figure 7.23_ Pairing attempt. [Author 2010]

figure 7.24_ Photograph of concept model. [Author 2010]

figure 7.25_ Photograph of concept model. [Author 2010]

figure 8.1_ 3D models expressing modularity. [Author 2010]

figure 8.2_ Diagram differentiating between stereotomic and tectonic structures. [Author 2010]

figure 8.3_ Diagram showing enclosed spaces, covered outdoor spaces and open spaces. [Author 2010]

figure 8.4_ Diagrammatic section. [Author 2010]

figure 8.5_ 3D stereotomic model. [Author 2010]

figure 8.6_ 3D tectonic model. [Author 2010]

figures 8.7 and 8.8_ 3D models showing primary, secondary and tertiary structures. [Author 2010]

figure 8.9_ Materiality collage. [Author 2010]

figure 8.10_ SBAT results. [SBAT]

figure 8.11_ Technical explorations. [Author 2010]

figure 8.12_ Green screen. [Gaventa 2006]

figure 10.1_ Wards map. [Stats SA]

figure 10.2_ Site information. [Munitoria]

figure 10.3_ Site information. [Munitoria]



11_2



r e f e r e n c e s

- Allen, L. 1964. *New Playgrounds*. Publisher Unknown
- Allen, L. 1968. *Planning for Play*. London: Thames and Hudson
- ArcIMS Viewer. 2009. [O] Available:
http://gis.tshwane.gov.za/website/Tshwane_Internet/viewer.htm?ACTIVELAYER=7&QUERY=LIS_KEY%20%3D%20'053600009/5'&QUERYZOOM=YES
Accessed 05/08/2010
- Berrizbeitia, A and Pollak, L. 1999. *Inside Outside: Between Architecture and Landscape*. Massachusetts: Rockport Publishers.
- Birksted, J. 1999. *Relating Architecture to Landscape*. London: Routledge Publishers
- Brighten up the Neighbourhood. 2009. [O]. Available:
http://www.worldarchitecturenews.com/index.php?fuseaction=wanappln.projectview&upload_id=11018
Accessed 23/04/2010
- Child's play. 2009. [O]. Available:
http://www.worldarchitecturenews.com/index.php?fuseaction=wanappln.projectview&upload_id=12860
Accessed 23/04/2010
- Cisneros, H.G. 1995. *Defensible Space: Deterring Crime and Building Community*. Washington: Department of Housing and Urban Development.
- Dattner, R. 1974. *Design for Play*. United States of America: MIT Press
- Day-care Centre, Delft South. 2002. [O]. Available:
http://www.noerowolff.com/projects/projects.php?project=educational/educare_i&image=educational/educare_i/detail01.jpg
Accessed 23/04/2010
- Definition of Play. 2007. [O]. Available:
<http://www.playtherapy.org.uk/AboutPlayTherapy/PlayDefinition1.htm>
Accessed 03/09/2010
- Dictionary. [O]. Available:
<http://www.answers.com/topic/childhood>
Accessed 28/03/2010
- Etherington, R. 2010. *Infant Educational Centre Cullar Vega*. [O]. Available:
<http://www.dezeen.com/2010/01/10/infant-educational-centre-cullar-vega-by-solinas-verd-arquitectos/>
Accessed 23/04/2010
- [O]. Available:

<http://booksandblockschildcare.com.au/media/bb02child.jpg>
Accessed 28/03/2010

- Fiotoft, I and Sageie, J. 2000. The Natural Environment as a Playground for Children: Landscape Description and Analyses of a Natural Play-scape. *Landscape and Urban Planning* **48[1-2]** 83-97
- Gaventa, S. 2006. *New Urban Spaces*. London: Octopus Publishing Group
- Hansen, K. 2007. *Reclaiming Lost Space: A Centre for Sports and Education Development in the Pretoria City Centre*. Pretoria: Publisher unknown
- Hays, D.L. 2004. Landscape within Architecture. *Architecture Journal*. [306090 07] 6-10
- Jordaan, G. 1989. Pretoria as 'Urbs Quadrata'. *Architecture S.A.* [May/June] 26-29
- Leatherbarrow, D. 2004. *Topographical Stories: Studies in Landscape and Architecture*. Pennsylvania: University of Pennsylvania Press
- Modern in Melbourne: Structuralism [O]. Available:
<http://users.tce.rmit.edu.au/e03159/ModMelb/mm2/lect/struct.html>
Accessed 05/07/2010
- Moolman, P. 2001. *Domain for Children Place for Child*. Pretoria: Publisher unknown
- Natal Education Department. 1979. *Design for Pre-Primary Schools*.
- New Pre-school & Sports Centre for St Cyprians' School. 1999. [O]. Available:
http://www.visserarchitects.co.za/work_sain.html
Accessed 27/07/2010
- Newman, O. 1996. *Creating Defensible Spaces*. United States of America: U.S. Department of Housing and Urban Development.
- Perold, M. 2009. *Music²*. Pretoria: Publisher unknown.
- Smalberger, M. 2007. *Portal to Pretoria*. Pretoria: Publisher unknown.
- Vicente, M. 2007. *S[T]Arts*. Pretoria: Publisher unknown.
- Wepener, L. 2007. *Artspace: A Visual Trajectory*. Pretoria: Publisher unknown.
- Worpole, K. 2002. Article on: *Aldo van Eyck: The Playgrounds and the City*. NAI Publishers

Additional websites

- http://www.imagineschooldesign.org/detail.html?&tx_ttnews%5Btt_news%5D=231&tx_ttnews%5BbackPid%5D=3&cHash=f9e6401097
- <http://www.archdaily.com/6987/skanderborggade-day-care-centre-dorte-mandrup/>
- <http://www.archifield.net/vb/showthread.php?p=14608>
- <http://www.openbuildings.com/buildings/infant-educational-centre-profile-1221.html>
- <http://vladstudio.deviantart.com/art/Typographic-World-Map-106395788>
- http://www.statssa.gov.za/census2001/atlas_ward/index.html
- <http://www.cbc.ca/health/story/2009/07/23/sleep-children-exercise.html>
- http://www.cmsignition.co.za/uploadimages/images_179/jse_DSC02731.jpg
- http://www.flickr.com/photos/hughes_leglise/169515387/



UNIVERSITEIT VAN PRETORIA
UNIVERSITY OF PRETORIA
YUNIBESITHI YA PRETORIA