

Fusing Space and Place

A MIXED USE ART FACILITY FOR T.U.T POST GRADUATE STUDENTS

Timothy Meyer

Submitted in partial fulfilment of the requirements for the degree of Magister of Architecture, MArch(Prof), the Faculty of Engineering, Built Environment and Information Technology.

**University of Pretoria
March 2011**

By: Timothy Meyer

TIMOTHY MEYER 29554838



MArch [Prof]

Study Leader: Prof. Dr. Piet Vosloo

Masters Co-ordinator: Dr. Jacques Laubscher

Fusing space and place : A mixed use art facility for T.U.T post graduate students

Abstract

This dissertation will explore ways in which abandoned space, and spaces between buildings, can be reconnected with their surroundings to enrich and contribute to the everyday experience of the user.

The intervention takes place along the edges of the Pretoria CBD, adjacent to an abandoned canalized urban river (Walkerspruit). The site hosts elements of historic importance and memory which have become fragmented from the everyday experience of the user in the city.

The hypothesis investigates the understanding of space and place - whether the above mentioned spaces can be fused together as a series of experiences to enhance the character of the site and its important historic elements.

The proposed development is made up of layered, mixed use activities catered toward a facility for T.U.T post graduate art students and other visiting artists. The building should create an opportunity for the public to engage with the process of making art and at the same time give students the opportunity to exhibit their work whilst engaging with their community.

Die dissertasie ondersoek maniere waarop agtergelate ruimtes en ruimtes tussen geboue heraangesluit kan word met hul omgewing om die alledaagse ervaring van die gebruiker aan te vul en te verryk

Die ingryping vind plaas op die kant van die Pretoria sentrale besigheidsdistrik en langs 'n agtergelate en gekanaliseerde stedelike rivier (Walkerspruit). Die terrein bevat elemente van geskiedkundige belang en herinnering wat verwyderd geraak het van die daaglikse ervaring van die stadsgebruiker.

Die hipotese ondersoek die begrip van ruimte en plek - of bogenoemde ruimtes saamgesmelt kan word deur 'n reeks ervarings om die karakter van die terrein en sy belangrike geskiedkundige elemente te versterk

Die voorgestelde ontwikkeling bestaan uit gelaagde, gemengde-gebruik aktiwiteite vir die vestiging van fasiliteite vir die TUT na-graadse kunststudente en ander besoekende kunstenaars. Die gebou moet 'n geleentheid skep waar die publiek by die proses van kunsskepping betrokke kan raak en gelykertyd aan studente die geleentheid bied om hul werk uit te stal en by hul gemeenskap betrokke te raak.

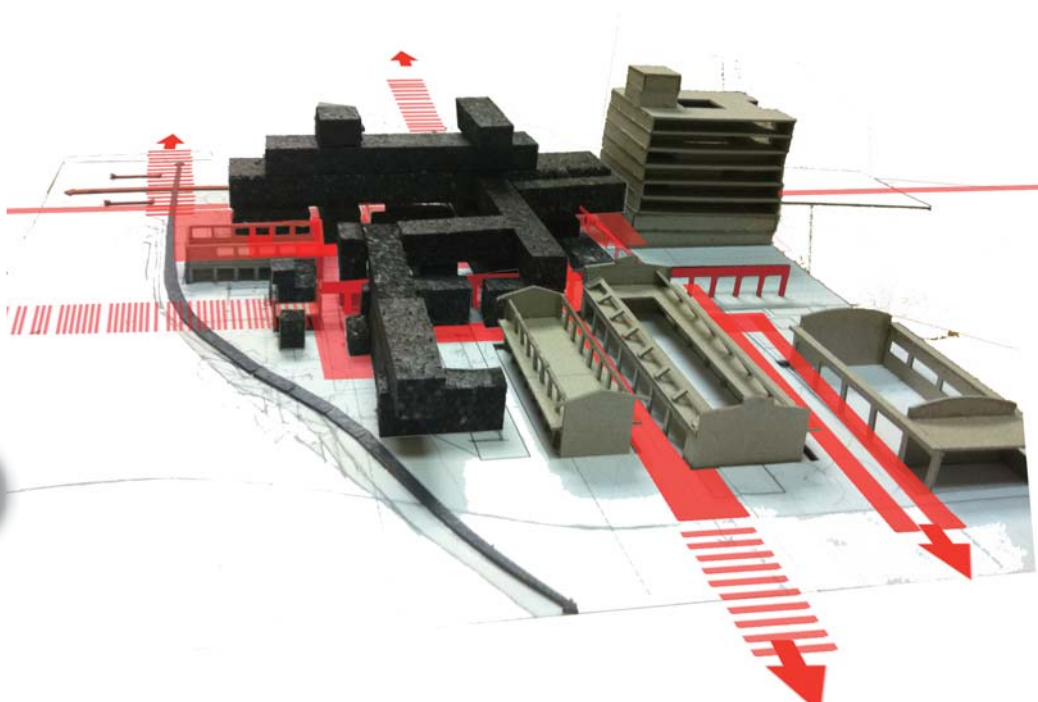


TABLE OF CONTENTS

| | |
|--|-----|
| Abstract | ii |
| List of figures | v |
| Chapter 1. Introduction..... | 01 |
| 1.1 Problem statement..... | 03 |
| 1.2 Normative position..... | 03 |
| 1.3 Project aims..... | 04 |
| 1.4 Limitation..... | 04 |
| Chapter 2. Background | 07 |
| Chapter 3. Research Methodology | 11 |
| Chapter 4. Space | 15 |
| Urban Theories | |
| Recovering Lost Space..... | 16 |
| Chapter 5. Place..... | 25 |
| Phenomenological Theories | |
| 5.1 Phenomenology..... | 26 |
| 5.2 Memory..... | 28 |
| 5.3 Genius Loci..... | 31 |
| Chapter 6. Fusion..... | 33 |
| Chapter 7. Context..... | 37 |
| 7.1 Location..... | 38 |
| 7.2 Historical Context..... | 40 |
| 7.3 Urban Context Macro..... | 46 |
| 7.4 Urban Context Micro..... | 56 |
| 7.5 Site Context..... | 66 |
| Chapter 8. Precedents..... | 79 |
| Chapter 9. Design Development..... | 91 |
| 9.1 Concept | 93 |
| 9.2 Development | 96 |
| Chapter 10. Technical Development..... | 113 |
| Bibliography..... | 139 |

| | |
|---|-----|
| ADDENDA..... | 144 |
| ADDENDUM A: URBAN ANALYSIS AND PROPOSED LINKS FOR PRETORIA BY 2010 URBAN FRAMEWORK GROUP | 146 |
| ADDENDUM B: CONTEXT BLOCK AND BUILDING STUDY | 155 |
| ADDENDUM C: FINAL PERSPECTIVE IMAGES | 162 |
| ADDENDUM D: MODEL PHOTOS | 168 |

List of Figures

| | |
|--|-----------|
| Chapter 1 : Introduction | 00 |
| Figure 1.1. Concept of fusing the site with surrounding context and memory, creating series of different connections. (Author, 2011) | 05 |
| Chapter 2 : Background..... | 00 |
| Figure 2.1 Diagrammatic figure ground study of Pretoria and the site highlighting important influences and design generators. (Author, 2011) | 09 |
| Chapter 3 : Research Methodology | |
| Chapter 4 : Space..... | 18 |
| Figure 4.1 Sketch illustrating the concept of existing networks and integrated pedestrian circulation patterns . (Author, 2011) | 18 |
| Figure 4.2 Sketch conceptually illustrating the negative effects of the city development strategies (Author, 2011). | 18 |
| Figure 4.3 Aerial photograph of Houston, Texas, USA. (http://www.panoramio.com , 2010.) | 18 |
| Figure 4.4 Image of the proposed ring-road around the city of pretoria (Geography department, University of Pretoria, 2011) | 18 |
| Figure 4.5 Illustrating the difference between the spacial structure of a traditional city and that of a modern city (Trancik, 1986: 19). | 19 |
| Figure 4.6 Illustration of how open recreational spaces are cut off from surrounding context (Author, 2011.) | 20 |
| Figure 4.7 Illustration of open spaces as more integrated spaces creating networks between other open spaces (Author, 2011). | 20 |
| Figure 4.8 Illustrates difference between Integrated and segregated (Gehl, 2006: 101) | 20 |
| Figure 4.9 Image illustrating the contrast between modern city planning and traditional city planning (Author, 2011). | 21 |
| Figure 4.10 Illustrates the difference between private use of space and the public use (Gehl, 2006: 113). | 21 |
| Figure 4.11 Sketch illustrating conceptually Inclusion and exclusion of public space. (Author 2011) | 22 |
| Figure 4.12 Aerial photograph of The Piazza Novona, Rome taken in 2008 (http://commons.wikimedia.org/wiki/File:Piazza.navona.in.rome arp.jpg , 2011). | 23 |
| Figure 4.13 Aerial photograph of The Piazza Novona, Rome (http://www.italophiles.com , 2011). | 23 |

| | |
|--|-----------|
| Chapter 5 : Place..... | 26 |
| Figure 5.1 | 26 |
| Painting of Pretoria in 1872 (Bolsman, 2001). | |
| Figure 5.2 | 28 |
| Interpretation of Heidegger theories on and the manifestation of place (Author, 2011). | |
| Chapter 6: Fusion..... | 33 |
| Figure 6.1 | |
| Sketch illustrating concept of fusing the river with its surrounding to stimulate an integrated relationship with the surrounding context . (Author, 2011) | 35 |
| Figure 6.2 | 35 |
| Sketch illustrating existing condition of the river and relationship with its context. (Author, 2011) | |
| Figure 6.3 | 35 |
| Sketch illustrating concept of fusing space and place and blurring the boundaries between the two . (Author, 2011) | |
| Chapter 7.1 : Location..... | 38 |
| Figure 7.1.1. | 38 |
| Diagrammatic map of Africa (Author, 2010). | |
| Figure 7.1.2. | 38 |
| Diagrammatic map of Gauteng (Group Urban Framework: Author, Wallace, Mia, Domonik, Neda, Jacobus, 2010) | |
| Figure 7.1.3. | 38 |
| Diagrammatic map of Tshwane and its different districts (Group Urban Framework: Author, Wallace, Mia, Domonik, Neda, Jacobus, 2010). | |
| Figure 7.1.4 | 39 |
| Diagrammatic map of site location and surrounding important landmarks (Group Urban Framework: Author, Wallace, Mia, Domonik, Neda, Jacobus, 2010) | |
| Figure 7.1.5 | 39 |
| Aerial Photograph of site taken in 2005 with important roads (Geography department, University of Pretoria, 2011). | |
| Chapter 7.2 : Historical urban context..... | 40 |
| Figure 7.2.1 (Top). | 40 |
| Is the graphic representation cadastral of Pretoria’s development from 1850 - present day (Author, 2010). | |
| Figure 7.2.2 | 40 |
| Figure Pretoria Map, 1889. (UPSpace Archive, University of Pretoria, 2011) | |
| Figure 7.2.3. | 40 |
| Moerdijk Urban Proposal scheme 1930. Image from newspaper article: Plan vir a mooier Pretoria. Die Volksstem. 29 April 1903. (UPSpace Archive, University of Pretoria, 2011) | |
| Figure 7.2.4. | 40 |
| Figure Ground study of Pretoria in 1936 (Pretoria colour fold up map, 1936) | |
| Figure 7.2.5. | 40 |
| Map of Pretoria in 1896 (Andrews, 1989). | |
| Figure 7.2.6. | 41 |
| Aerial photo of Pretoria (Voutsas and Findlay, 1949). | |
| Figure 7.2.7. | 41 |
| Figure ground study of Pretoria (Author, 2011) | |
| Figure 7.2.8. | 41 |
| Map of Pretoria (AA, 1985: 85). | |
| Historical context site..... | 42 |
| Figure 7.2.9 | 42 |
| Painting of Pretoria in 1872 (Bolsman, 2001: 19). | |
| Figure 7.2.10 | 42 |
| Photo of the Lions Bridge and the Apies river prior to it being canalized (Andrews, 1989: 64). | |
| Figure 7.2.11 | 42 |
| Aerial photograph of the Caledonian sports grounds taken in 1947 (UPSpace Archive, University of Pretoria, 2011). | |
| Figure 7.2.12 | 43 |
| Photograph of Edward street with the Mill.(Andrews, 1989: 64). | |
| Figure 7.2.13 | 43 |
| Photograph of the lions statues on Lions bridge. (Author, 2011) | |

| | |
|--|-----------|
| Figure 7.2.14 Photograph of a parade on Church Square.(Andrews, 1989: 02). | 43 |
| Figure 7.2.15 Photograph of Church street west .(Andrews, 1989: 14). | 43 |
| Historical context river..... | 44 |
| Figure 7.2.16 Painting of Pretoria in 1872 (Bolsman, 2001: 20). | 44 |
| Figure 7.2.17 Painting of the Apies River after being canalized (Bolsman, 2001: 135). | 44 |
| Figure 7.2.18 Painting of the erosive qualities of Apies River (Bolsman, 2001: 134). | 44 |
| Chapter 7.3 : New urban context (Macro)..... | 46 |
| Figure 7.3.1. Basic sketch of Boston city layout (Lynch, 1960: 18). | 46 |
| Figure 7.3.2. Layered layout of Boston highlighting major and minor elements (Lynch, 1960: 19). | 46 |
| Figure 7.3.3 Basic sketch of the Pretoria CBD layout (Author, 2011). | 47 |
| Figure 7.3.4 Layered urban elements the Pretoria CDB using Kevin Lynch’s mapping principles of paths, edges, nodes, districts and landmarks detailed further in following pages in this chapter (Author, 2011). | 47 |
| Figure 7.3.5. Photo of existing public ablution facilities along a brown way (Author, 2011). | 49 |
| Figure 7.3.6. Hybrid graphic (Group Urban Framework: Author, Mia, Domonik, Neda, Wallace, Jacobus, 2010). | 49 |
| Figure 7.3.7 Figure ground map of Pretoria (Author, 2011) | 50 |
| Figure 7.3.8 Figure ground highlighting the potential of reactivating the Apies River and Walkerspruit (Author, 2011). | 50 |
| Figure 7.3.9 Photo of Walkerspruit (Author,2011). | 51 |
| Figure 7.3.10 Photograph where the two rivers merge (Author, 2011) | 51 |
| Figure 7.3.11 Photo of a building adjacent to Walkerspruit (Author,2011). | 51 |
| Figure 7.3.12 Figure ground of Pretoria highlighting the ceremonial routes and adjacent buildings and sites to the rivers (Author, 2011). | 52 |
| Figure 7.3.13 Photo taken on site of the edge of the river (Author, 2011) | 53 |
| Figure 7.3.14 Photo of character of the existing building to be retained (Author, 2011). | 53 |
| Figure 7.3.15 and Figure 7.3.16 Photo of influential character of industrial building along Walkerspruit (Author, 2011). | 53 |
| Figure 7.3.17 Figure ground of historical and cultural nodes, as well as the river park (Author, 2011). | 54 |
| Figure 7.3.18 Existing industrial buildings on site to be retained (Author, 2011). | 55 |
| Figure 7.3.19 Photo of the Caledonian Sports Ground (Author, 2011). | 55 |
| Chapter 7.4 : Site context (Micro)..... | 56 |
| Figure 7.4.1 Photograph of Church Street travelling West (Author, 2011). | 56 |
| Figure 7.4.2 Graphic Illustration of Pretoria’s proposed open plan networks (Group Urban Framework: Author Wallace, Mia, Minnette, Domonik, Ned and Jacobus, 2010). | 56 |
| Figure 7.4.3 Photograph of the position along the river the river walk will cross Church street (Author, 2011). | 57 |

| | |
|---|-----------|
| Figure 7.4.4 | 57 |
| Photograph of pedestrian movement along Nelson Mandela coming off esselen out of the suburbs (Author, 2011). | |
| Figure 7.4.5 | 57 |
| Picture of formalized informal trade along Beatrix (Author, 2011). | |
| Figure 7.4.6 | 57 |
| Photograph of high pedestrian activity during peak hours along Beatrix (Author, 2011). | |
| Figure 7.4.7 | 58 |
| Figure ground of river park and ceremonial routes (Author, 2011) | |
| Figure 7.4.8 | 59 |
| Photograph of Church Street looking toward Pretoria CBD (Author, 2011). | |
| Figure 7.4.9 | 59 |
| Photograph on Pretorius Street, with poorly demarcated public transport waiting facilities (Author, 2011). | |
| Figure 7.4.10 | 59 |
| Section 01 through Church Street and lillian Ngoya Square (Author, 2011) | |
| Figure 7.4.11 | 60 |
| Figure ground highlighting ceremonial route (Author, 2011) | |
| Figure 7.4.12 | 61 |
| Section through Church street illustrating new character (Author, 2011). | |
| Figure 7.4.13 | 62 |
| Figure ground highlighting ceremonial route (Author, 2011). | |
| Figure 7.4.14 | 63 |
| Concept before and after section 02 (figure 7.4.11) through the Caledonian Sports grounds, including the Apies River and Walkerspruit (Author, 2011). | |
| Figure 7.4.15 | 63 |
| Concept before and after section 01 & 03 (figure 7.4.11) through the Apies river and Walkerspruit (Author, 2011). | |
| Figure 7.4.16 | 64 |
| Map of surrounding use and distance from T.U.T satellite campuses (Group Framework: Author, Tommy, 2011). | |
| Chapter 7.5 : Site context (Micro)..... | 66 |
| Figure 7.5.1 | 67 |
| Panoramic of Church street elevation (Author, 2011). | |
| Figure 7.5.2 | 67 |
| Aerial panoramic of site (Author, 2011). | |
| Figure 7.5.3 | 68 |
| Aerial photo of site plan (Geography department, University of Pretoria 2011). | |
| Figure 7.5.4 | 68 |
| View down Church street towards the Union Buildings (Author,2011). | |
| Figure 7.5.5 | 68 |
| Linear, complex and odd buildings on northern side of Church street (Author,2011). | |
| Figure 7.5.6 | 68 |
| Burchel building to the north of Church street (Author,2011). | |
| Figure 7.5.7 | 69 |
| McCarthy Volkswagen showroom complex fronting Church street and the Apies river (Author,2011). | |
| Figure 7.5.8 | 69 |
| Lions Bridge crossing the Apies river along church street (Author,2011). | |
| Figure 7.5.9 | 69 |
| Elbow of where the Apies River and Walkerspruit merge (Author,2011). | |
| Figure 7.5.10 | 69 |
| View from north of Church street looking towards Church Square (Author,2011). | |
| Figure 7.5.11 | 69 |
| Fenced lost space has potential to be developed into green open space (Author,2011). | |
| Figure 7.5.12 | 69 |
| Apies River channel which becomes much wider and less steeper, the river travels north toward TUT (Author,2011). | |
| Figure 7.5.13 | 69 |
| View of Walkerspruit running northwards along the western edge of the site (Author,2011). | |
| Figure 7.5.14 | 69 |
| View over Pretorius street and the Apies river towards open parking area (Author,2011). | |
| Figure 7.5.15 | 70 |
| Aerial photo of site plan (Geography department, University of Pretoria 2011). | |
| Figure 7.5.16 | 70 |
| Elevated view of the northern edge of the Caledonian sports-fields (Author,2011). | |

| | |
|---|-----------|
| Figure 7.5.17 | 70 |
| The historic retaining wall and row of Jacaranda trees create a unique street edge to the north of the Caledonian soccer grounds (Author,2011). | |
| Figure 7.5.18 | 70 |
| Elevated view looking at the existing structures framing the west of the site adjacent to Walkerspruit (Author,2011). | |
| Figure 7.5.19 | 71 |
| Walkerspruit leading southward between the eastern edge of the Caledonian sports grounds (Author,2011). | |
| Figure 7.5.20 | 71 |
| Southern edge of Pretorius street (Author,2011). | |
| Figure 7.5.21 | 71 |
| Building adjacent to Walkerspruit (Author,2011). | |
| Figure 7.5.22 | 71 |
| Sterland cinema and shopping complex (Author,2011). | |
| Figure 7.5.23 | 71 |
| Ramped entrance into the parking of the Benstra building with the Kingsley Centre in the background (Author,2011). | |
| Figure 7.5.24 | 71 |
| The Southern end of Pretorius is framed by the Emmanuel Christian Church (Author,2011). | |
| Figure 7.5.25 | 71 |
| Kingsley Centre viewed from the south east on Pretorius street (Author,2011). | |
| Figure 7.5.26 | 71 |
| Benstra building (Author,2011). | |
| Figure 7.5.27 | 72 |
| Figure ground analysis of solid building stock and lightweight temporary structures (Author, 2011). | |
| Figure 7.5.28 | 73 |
| Figure ground analysis of existing entrances and edges (Author,2011). | |
| Figure 7.5.29 | 74 |
| Figure ground analysis of existing open spaces between the buildings and potential axis links (Author, 2011) | |
| Figure 7.5.30 | 75 |
| Figure ground analysis of the potential opportunities and design generators (Author, 2011). | |
| Figure 7.5.31 | 76 |
| Figure ground analysis of existing valuable heritage structures to be retained (Author, 2011) | |
| | |
| Chapter 8: Precedents..... | 79 |
| Figure 8.1 | 80 |
| <i>Photo of the High Line spine cutting through Manhattans different districts</i> (Friends of the High Line, 2011) | |
| Figure 8.2 | 80 |
| <i>Spinal map</i> (Friends of the High Line, 2011) | |
| Figure 8.3 | 80 |
| Image of previously abandoned high line (Jonathan Flaum, 2004). | |
| Figure 8.4 | 81 |
| <i>conceptual image of relationship between existing structure and intervention</i> (Friends of the High Line, 2011) | |
| Figure 8.5 | 81 |
| <i>Perspective concept and relationship to adjacent buildings</i> (Friends of the High Line, 2011) | |
| Figure 8.6 | 81 |
| Photograph illustrating the contrast between the the city skyline and the high line (photo by Diane Cook and Len Jenshel (National Geographic 2011). | |
| Figure 8.7 | 81 |
| Photograph by Diane cook and Len Jenshel, illustrating the new apartment housing constructed along the High Line (National Geographic, 2011). | |
| Figure 8.8 | 81 |
| Photograph by Diane cook and Len Jenshel, illustrating how artwork is exhibited and used as a backdrop for a photo shoot (National Geographic, 2011). | |
| Figure 8.9 | 81 |
| Photograph by Diane cook and Len Jenshel, illustrating capturing the view form the amphitheatre overlooking tenth avenue (National Geographic, 2011). | |
| Figure 8.10 | 81 |
| <i>Perspective image of recreational spaces</i> (Friends of the High Line 2011) | |
| Figure 8.11 | 82 |
| Presentation Plan (RPBW, 2011). | |
| Figure 8.12 | 82 |
| Concept and circulation diagram (RPBW, 2011). | |
| Figure 8.13 | 82 |
| Concept of inside relationship to outside (RPBW, 2011). | |

| | |
|--|-----------|
| Figure 8.14 | 83 |
| Perspective from main approach (RPBW, 2011). | |
| Figure 8.15 | 83 |
| Section illustrating natural and controlled lighting (RPBW, 2011). | |
| Figure 8.16 | 83 |
| Model of form and articulation (RPBW, 2011). | |
| Figure 8.17 | 84 |
| Plan (RPBW, 2011). | |
| Figure 8.18 | 85 |
| Section (RPBW, 2011). | |
| Figure 8.19 | 85 |
| Photograph of roof (RPBW, 2011). | |
| Figure 8.20 | 85 |
| photograph of threshold (RPBW, 2011). | |
| Figure 8.21 | 85 |
| photograph of suspended stair (RPBW, 2011). | |
| Figure 8.22 | 85 |
| Photo of the building at night (RPBW, 2011). | |
| Figure 8.23 | 86 |
| Photograph of street while kids play (Author, 2011). | |
| Figure 8.24 | 86 |
| Photograph of Building at night (Daffonchio & Associates, 2011). | |
| Figure 8.25 | 87 |
| Floor Plans (Doffonchio & Associates, 2010: 159). | |
| Figure 8.26 | 87 |
| Photograph of street (Author, 2011). | |
| Figure 8.27 | 87 |
| Photograph of roof top event taken at night (Mainstreetlife, 2010). | |
| Figure 8.28 | 87 |
| Photograph of open plan interior studio apartments (Daffonchio & Associates, 2011). | |
| Figure 8.29 | 87 |
| Photograph of open plan interior studio apartments (Daffonchio & Associates, 2011). | |
| Figure 8.30 | 87 |
| Photograph of geodesic dome guard house by Mikhael Subotsky (Daffonchio & Associates, 2011). | |
| Figure 8.31 | 88 |
| Site locality map (Digest of South African Architecture, 2010: 213) | |
| Figure 8.32 | 88 |
| Sketch illustrating connection between inside and outside. (Shirley. 2009: 18) | |
| Figure 8.33 | 88 |
| Sketch illustrating how passages are used as exhibit spaces connecting the studios. (Shirley, 2009: 17) | |
| Figure 8.34 | 89 |
| Section. (Digest of South African Architecture, 2010: 213) | |
| Figure 8.35 | 89 |
| Plans. (Digest of South African Architecture, 2010: 213) | |
| Figure 8.36 | 89 |
| Photo. (Digest of South African Architecture, 2010: 213) | |
| Figure 8.37 | 89 |
| Photograph of studios (Daffonchio & Associates, 2011). | |
| Figure 8.38 | 89 |
| Photograph of roof spaces used as recreational bar and drinking area. (Author, 2011). | |
| Figure 8.39 | 89 |
| Photograph of courtyard with overlapping activities (Daffonchio & Associates, 2011). | |
| Figure 8.40 | 89 |
| Photo of Exhibit space (Daffonchio & Associates, 2011). | |
| Figure 8.41 | 89 |
| Photo of Exhibit space (Digest of South African Architecture, 2010: 213). | |
| Chapter 9 : Design..... | 91 |
| Figure 9.1 | 93 |
| Concept model of existing and proposed, enforcing the concept and idea of fusion. (Author, 2011). | |
| Figure 9.2 | 95 |
| Concept collage, taking the theories with site analysis and fusing them together to form the concept (Author, 2011). | |
| Figure 9.3 | 96 |
| Proposed circulation arteries between the existing buildings and courtyard spaces (Author, 2011). | |

| | |
|---|------------|
| Figure 9.4 | 96 |
| Analysis of the valuable structures to inform and be incorporated into the new design (Author, 2011). | |
| Figure 9.5. | 97 |
| Concept building response to Church Street (Author, 2011). | |
| Figure 9.6 | 97 |
| To assemble or disperse (Gehl, 2006: 81). | |
| Figure 9.7 | 97 |
| To Intergarate or segregate (Gehl, 2006: 101). | |
| Figure 9.8 | 97 |
| To Invite or repel (Gehl, 2006: 1113). | |
| Figure 9.9 | 97 |
| To open or to close (Gehl, 2006: 120). | |
| Figure 9.10. | 97 |
| Concept for courtyard space (Author, 2011). | |
| Figure 9.11 | 98 |
| Concept section sketch (Author, 2011). | |
| Figure 9.12 | 98 |
| Developed concept sketch (Author, 2011). | |
| Figure 9.13 | 99 |
| Conceptual vertical planning section and elevation (Author, 2011). | |
| Figure 9.14 | 99 |
| Concept circulation across thresholds (Author, 2011). | |
| Figure 9.15 | 100 |
| Basement floor plan and programme (Author, 2011). | |
| Figure 9.16 | 101 |
| Concept Model showing program (Author, 2011). | |
| Figure 9.17 | 101 |
| Concept model showing programme (Author, 2011). | |
| Figure 9.18 | 102 |
| Ground floor plan and programme (Author, 2011). | |
| Figure 9.19 | 103 |
| Hierarchy of space from public to private (Author, 2011). | |
| Figure 9.20 | 104 |
| First floor plan and programme (Author, 2011). | |
| Figure 9.21 | 105 |
| Concept image of pedestrian movements along church street across the threshold under the building onto the site (Author, 2011). | |
| Figure 9.22 | 106 |
| Second floor plan and programme (Author, 2011). | |
| Figure 9.23 | 107 |
| Third floor plan and programme (Author, 2011). | |
| Figure 9.24 | 108 |
| Fourth floor plan and programme (Author, 2011). | |
| Figure 9.25 | 109 |
| Fifth floor plan and programme (Author, 2011). | |
| Figure 9.26 | 109 |
| Loft floor plan and programme (Author, 2011). | |
| Figure 9.27 | 109 |
| Fire escape sketch with vertical creeper (Author, 2011). | |
| Figure 9.28 | 110 |
| Concept sketch of norther elevation (Author, 2011). | |
| Figure 9.29 | 110 |
| Concept development sketch section (Author, 2011). | |
| Figure 9.30 | 111 |
| Planted fire escape sketch (Author, 2011). | |
| Chapter 10 : Technical..... | 113 |
| Figure 10.01 | 114 |
| Technical development section through building (Author, 2011). | |
| Figure 10.02 | 114 |
| Part technical development section, part elevation through building, (see plan 115) (Author, 2011). | |
| Figure 10.03 | 115 |
| Development first floor plan (Author, 2011). | |

| | |
|---|-----|
| Figure 10.04 | 115 |
| Development fifth floor plan (Author, 2011). | |
| Figure 10.05 | 116 |
| Development ground floor plan (Author, 2011). | |
| Figure 10.06 | 118 |
| Site plan (Author, 2011). | |
| Figure 10.07 | 119 |
| Basement level 02 plan (Author, 2011). | |
| Figure 10.08 | 120 |
| Basement level 01 plan (Author, 2011). | |
| Figure 10.09 | 121 |
| Master ground floor plan (Author, 2011). | |
| Figure 10.10 | 122 |
| First floor plan (Author, 2011). | |
| Figure 10.11 | 123 |
| Second floor plan (Author, 2011). | |
| Figure 10.12 | 124 |
| Third floor plan (Author, 2011). | |
| Figure 10.13 | 124 |
| Fourth floor plan (Author, 2011). | |
| Figure 10.14 | 125 |
| Fifth floor plan (Author, 2011). | |
| Figure 10.15 | 125 |
| Sixth floor plan (Author, 2011). | |
| Figure 10.16 | 126 |
| Section A-A (reference figure 10.5) (Author, 2011). | |
| Figure 10.17 | 127 |
| Section B-B (reference figure 10.5) (Author, 2011). | |
| Figure 10.18 | 128 |
| North (Church Street) elevation (Author, 2011). | |
| Figure 10.19 | 129 |
| Envelope Section (Author, 2011). | |
| Figure 10.20 | 130 |
| Detail A (Author, 2011). | |
| Figure 10.21 | 131 |
| Detail B (Author, 2011). | |
| Figure 10.22 | 132 |
| Detail C (Author, 2011). | |
| Figure 10.23 | 133 |
| Detail D (Author, 2011). | |
| Figure 10.24 | 134 |
| Detail E (Author, 2011). | |
| Figure 10.25 | 135 |
| Detail F (Author, 2011). | |
| Figure 10.26 | 136 |
| Detail G (Author, 2011). | |

ADDENDA

| | |
|---|------------|
| ADDENDUM A:..... | 143 |
| Figure A.1 | 144 |
| Photo of segregated public open space (Author, 2011). | |
| Figure A.2 | 144 |
| Photograph of Schoeman street identified as possible brown way (Author, 2011) | |
| Figure A.3 | 145 |
| Pretoria green and open space network map (Group framework: Author, Mia, Domonik, Neda, Wallace, Jakobus, 2010) | |
| Figure A.4 | 145 |
| Photo of Church street travelling east towards the Union Buildings (Author, 2011). | |
| Figure A.5 | 146 |
| Photo of public open space along the ceremonial route at the Union buildings (Author, 2011). | |
| Figure A.6 | 147 |
| Photograph of Nelson Mandela Travelling South. Major route into or out of the city (Author, 2011). | |
| Figure A.7 | 147 |

| | |
|--|------------|
| Pretoria Movement network map (Group framework, Author, Mia, Domonik, Neda, Wallace, Jakobus, 2010). | 147 |
| Figure A. 8 | 147 |
| <i>Map of Pretoria FDR. 2010 (www.gautrain.co.za)</i> | |
| Figure A. 9 | 148 |
| <i>Graphic Image of Pretoria Gautrain Station. 2010 (www.gautrain.co.za)</i> | |
| Figure A. 10 | 149 |
| <i>Graphic Map of Gautrain's Pretoria Station. 2010 (www.gautrain.co.za)</i> | |
| Figure A. 11 | 149 |
| Graphic Illustration of Pretorias proposed Gautrain BRT networks (Group Urban Framework: Author Wallace, Mia, Minnette, Domonik, Ned and Jacobus, 2010). | |
| Figure A. 12 | 151 |
| Photograph of commercial buildings surrounding the site (Author, 2011). | |
| Figure A. 13 | 151 |
| Photograph of residential components surrounding site (Author, 2011). | |
| Figure A. 15 | 151 |
| Main. Pretoria District network relative to Pretoria (Group Urban Framework, Author, Mia, Domonik, Neda, Wallace, Jakobus, 2010). | |
| ADDENDUM B:..... | 153 |
| Figure B. 1 | 154 |
| Aerial photograph of site plan (Geography Department, University of Pretoria, 2011). | |
| Figure B. 2 & Figure B. 3 | 154 |
| A - stand 2/60 (Author,2011). | |
| Figure B. 4 & Figure B. 5 | 154 |
| A - stand R/1029 (Author,2011). | |
| Figure B. 6 | 154 |
| B - stan | |
| Figure B. 7 & Figure B. 8 | 154 |
| A - stand 4/56 (Author, 2011). | |
| Figure B. 9 & Figure B. 10 | 155 |
| D - 1053 (Author, 2011). | |
| Figure B. 11 & Figure B. 12 | 155 |
| A - stand 1053 (Author, 2011). | |
| Figure B. 13 | 155 |
| A - stand 5/56 (Author, 2011). | |
| Figure B. 14 | 155 |
| B - stand 5/56 (Author, 2011). | |
| Figure B. 15 & Figure B. 16 | 155 |
| B - stand 1053 (Author, 2011). | |
| Figure B. 17 & Figure B. 18 | 155 |
| C - stand 1053 (Author, 2011). | |
| Figure B. 19 & Figure B. 20 | 156 |
| E + F - stand 10 | |
| Figure B. 21 | 156 |
| E - stand 5/58 (Author, 2011). | |
| Figure B. 22 & Figure B. 23 | 157 |
| B - stand 5/58 (Author, 2011). | |
| Figure B. 24 & Figure B. 25 | 157 |
| C - stand 5/58 (Author, 2011). | |
| Figure B. 26 & Figure B. 27 | 157 |
| A - stand 5/58 (Author, | |
| Figure B. 28 | 157 |
| F - stand 5/58 (Author, 2011). | |
| Figure B. 29 | 157 |
| D - stand 5/58 (Author, 2011). | |
| Figure B. 30 | 157 |
| F - stand 1183 (Author, 2011). | |
| Figure B. 31 & Figure B. 32 | 157 |
| A - stand 1083 (Author, 2011). | |
| Figure B. 33 & Figure B. 34 | 157 |
| D - stand 1083 (Author, 2011). | |
| Figure B. 35 & Figure B. 36 | 157 |
| C - stand 1083 (Author, 2011). | |

| | |
|---|------------|
| Figure B. 37 & Figure B. 38 B - stand 1083 (Author, 2011). | 159 |
| Figure B. 39 & Figure B. 40 G - stand 1183 (Author, 2011) | 159 |
| Figure B. 41 E - stand 1183 (Author, 2011). | 159 |
| Figure B. 42 & Figure B. 43 A - stand 2/62 (Author, 2011). | 159 |
| Figure B. 44 & Figure B. 45 B - stand 2/62 (Author, 2011). | 159 |
| ADDENDUM C:..... | 161 |
| Figure C. 1 Aerial photograph of site plan (Geography Department, University of Pretoria, 2011). | 162 |
| Figure C. 2 Perspective taken from the island between the two rivers (Author, 2011). | 162 |
| Figure C. 3 Perspective taken from Nelson Mandela Drive looking up to Pretorius Street (Author, 2011). | 163 |
| Figure C. 4 Perspective taken from Lions Bridge (Author, 2011). | 163 |
| Figure C. 5 Aerial Perspective (Author, 2011). | 164 |
| Figure C. 6 View of courtyard 2 (Author, 2011). | 164 |
| Figure C. 7 View of Textile Workshop taken from river (Author, 2011). | 165 |
| Figure C 8. View of access across site looking the photography and art workshop (Author, 2011). | 165 |
| ADDENDUM D:..... | 167 |
| Figure D 1 Photograph of urban concept model looking east (Author, 2011). | 168 |
| Figure D 2 Photograph of urban concept model looking west (Author, 2011). | 169 |
| Figure D 3 Photograph of urban concept model looking south (Author, 2011). | 170 |
| Figure D 4 Photograph of urban concept model looking north (Author, 2011). | 170 |
| Figure D 5 Aerial photograph of concept model looking north west (Author, 2011). | 172 |
| Figure D 6 Aerial photograph of concept model looking south (Author, 2011). | 173 |
| Figure D 7 Aerial photograph of structural model looking north (Author, 2011). | 174 |
| Figure D 8 Aerial photograph of concept model looking east (Author, 2011). | 175 |
| Figure D 9. Aerial photograph of structural model looking south (Author, 2011). | 176 |
| Figure D 10. Aerial photograph of structural model looking north -west (Author, 2011). | 177 |