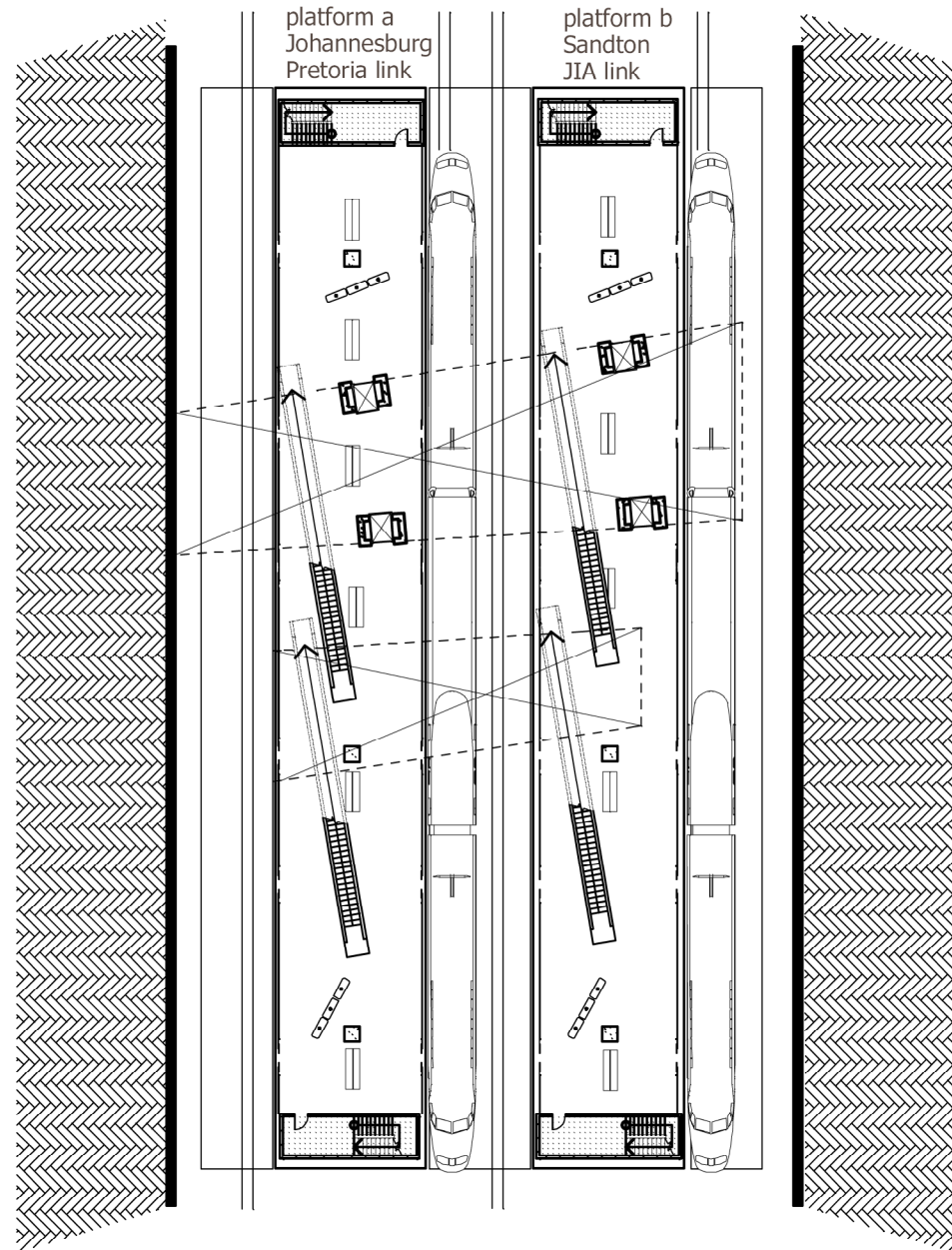


- LIST OF FIGURES
- INTRODUCTION
- METRO METAMORPHOSES
- FORMULATING THE DESIGN TASK
- CONTEXT STUDY
- PRECEDENTS
- BASELINE
- DESIGN DISCOURSE
- TECHNICAL RESOLUTION
- DESIGN DRAWINGS**
- CONCLUSION
- BIBLIOGRAPHY
- APPENDICES

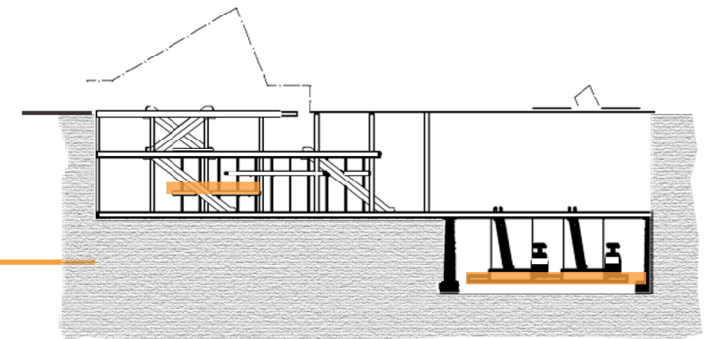


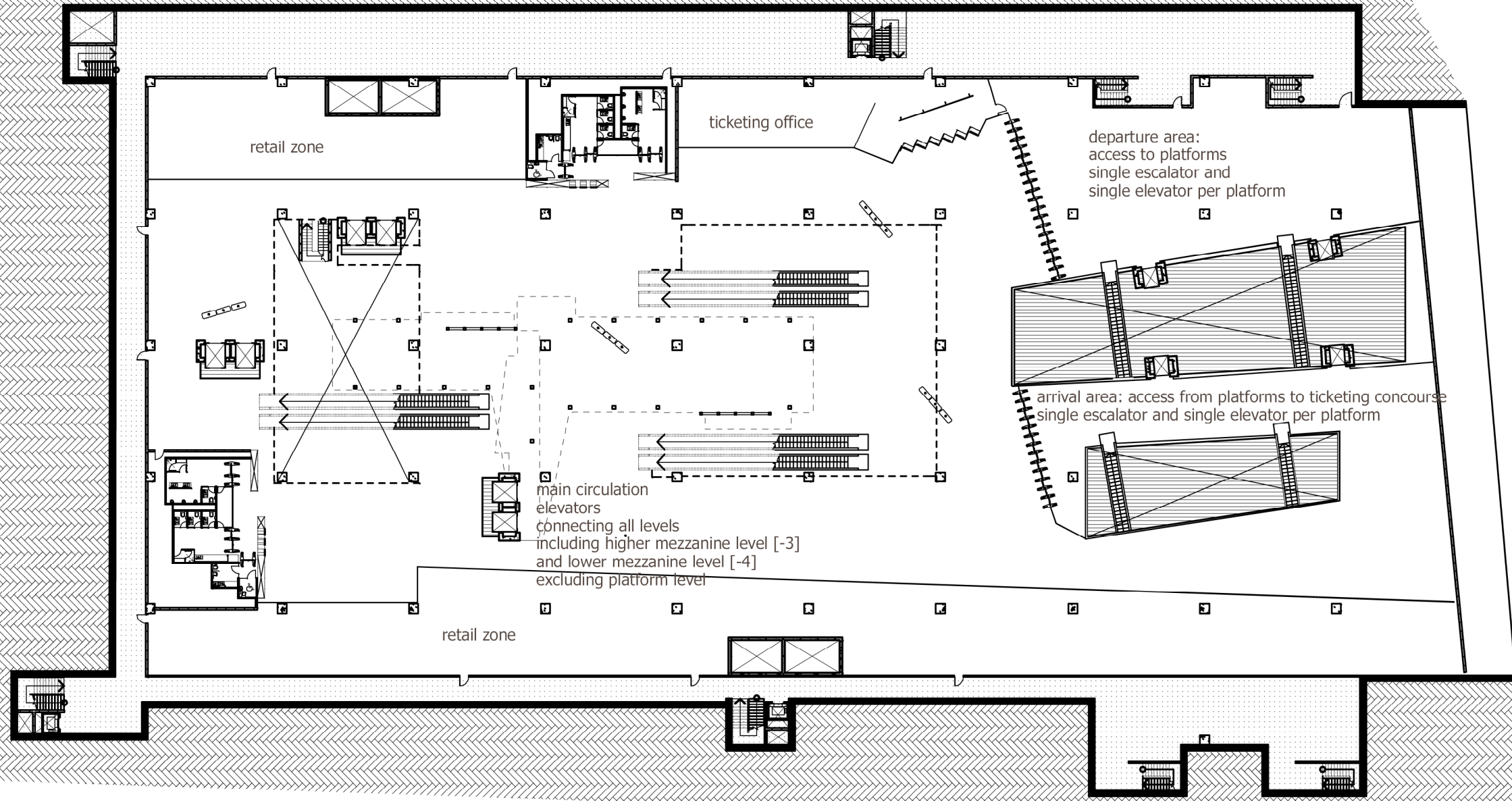
PLAN PLATFORM LEVEL  
1:500

# DRAWING 001

PLAN  
PLATFORM LEVEL  
1:500

TRACK AND PLATFORM  
LEVEL  
-29900

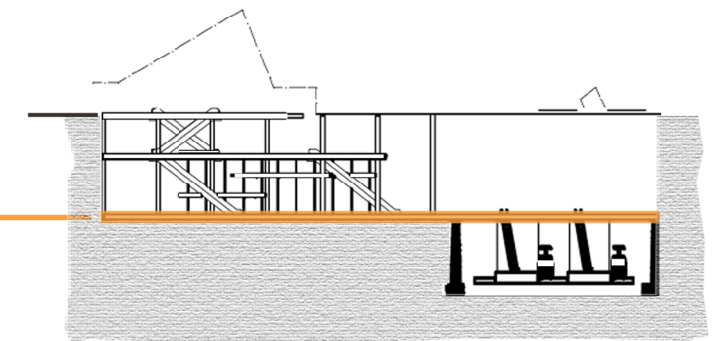


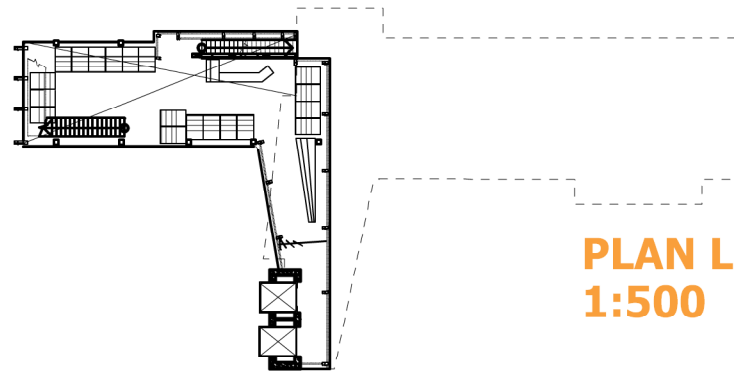


**DRAWING 002**  
**PLAN**  
**TICKETING CONCOURSE**  
**LEVEL [-5]**  
**1:500**

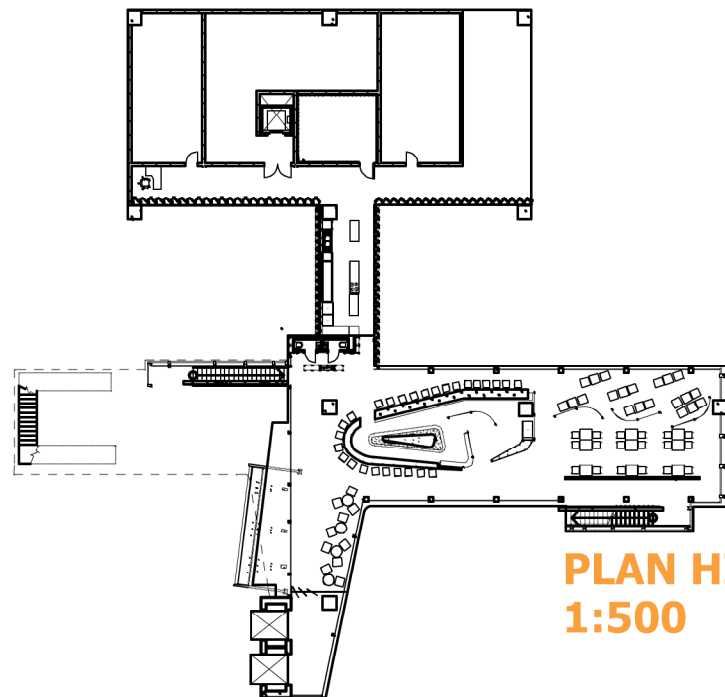
**PLAN TICKETING CONCOURSE**  
**LEVEL [-5]**  
**1:500**

TICKETING CONCOURSE  
LEVEL [-5]  
-18500





**PLAN LOWER MEZZANINE LEVEL [-4]  
1:500**



**PLAN HIGHER MEZZANINE LEVEL [-3]  
1:500**

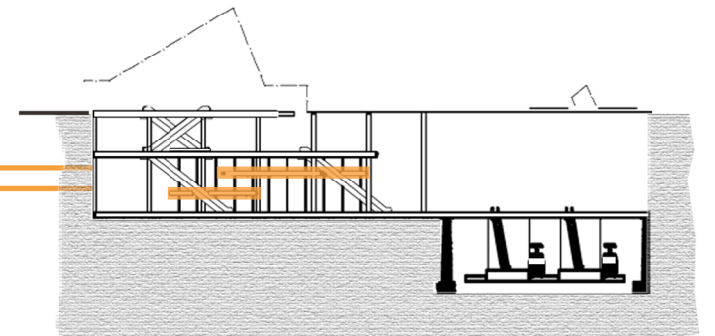
## DRAWING 003

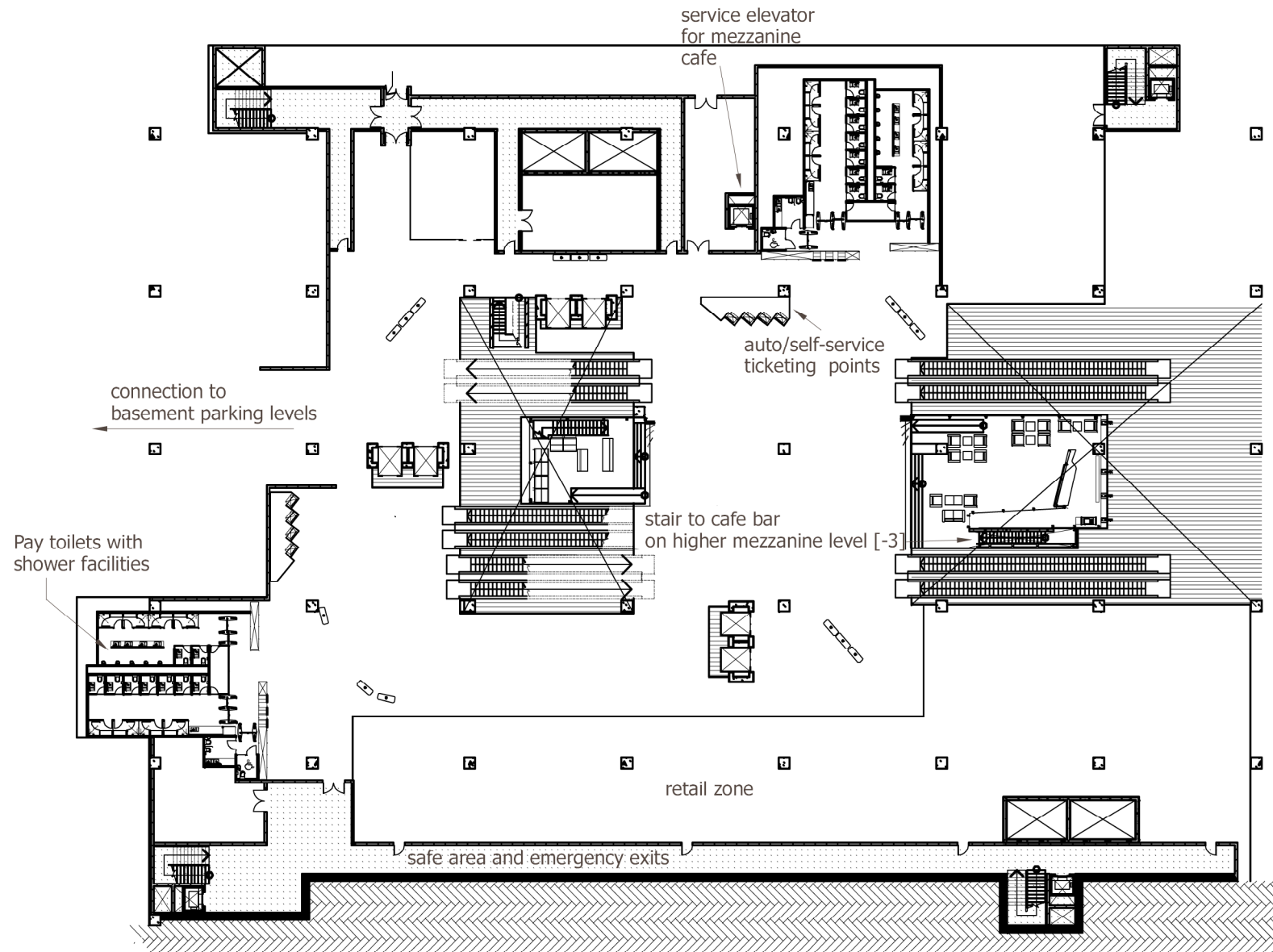
**PLAN  
LOWER MEZZANINE LEVEL [-4]  
1:500**

**PLAN  
HIGHER MEZZANINE LEVEL [-3]  
1:500**

HIGHER MEZZANINE  
LEVEL [-3]  
-11100

LOWER MEZZANINE  
LEVEL [-4]  
-14800

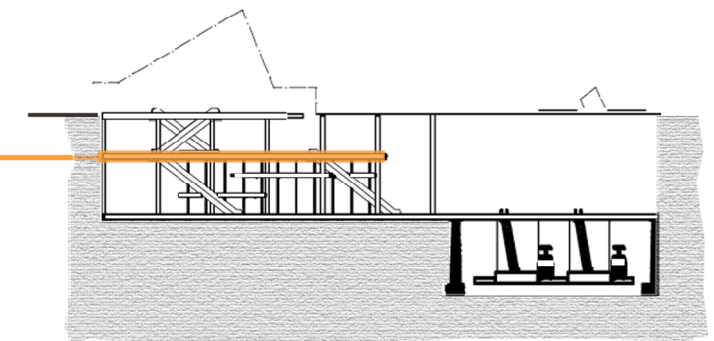


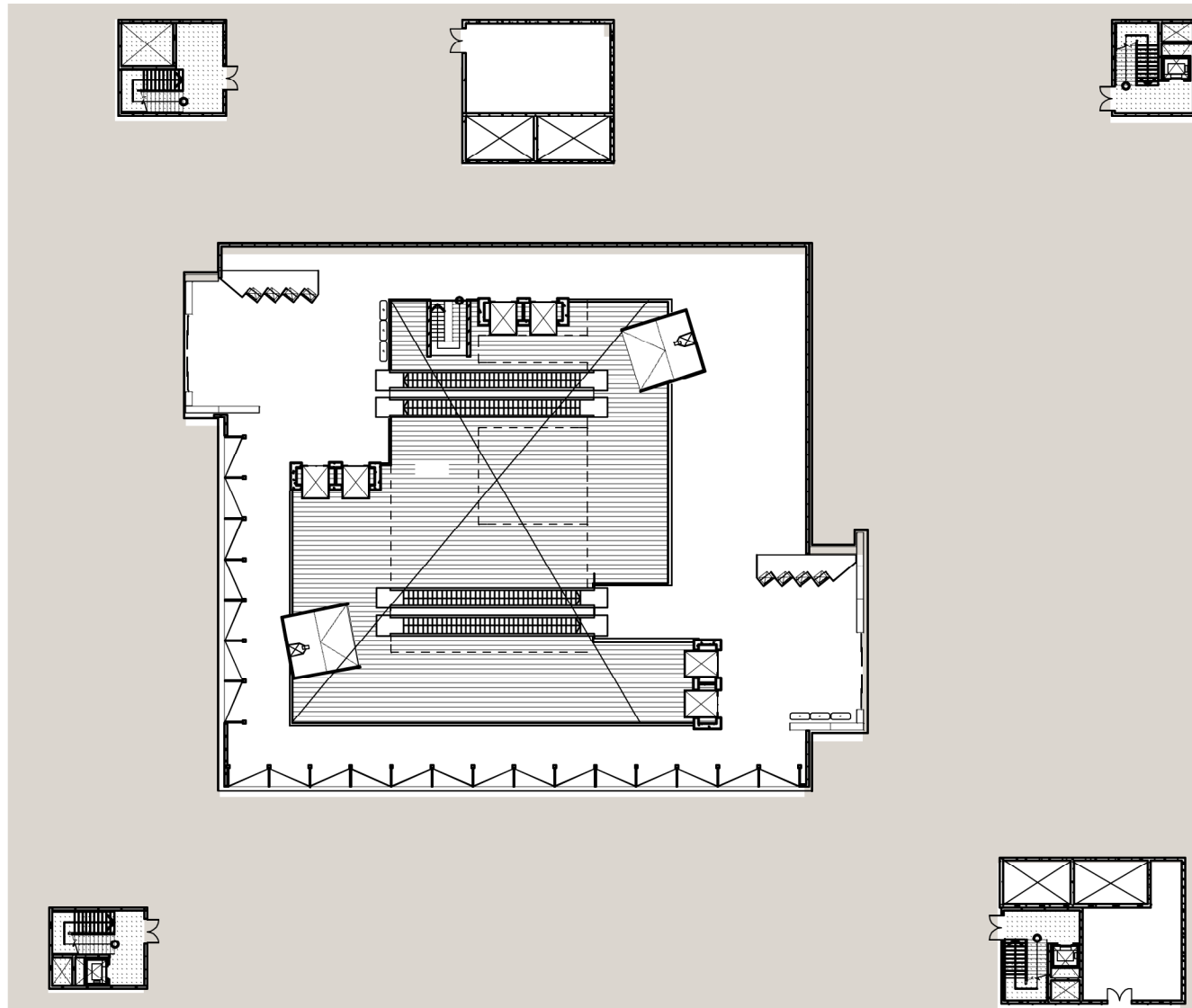


**PLAN GENERAL CONCOURSE LEVEL [-2]**  
**1:500**

**DRAWING 004**  
**PLAN**  
**GENERAL CONCOURSE**  
**LEVEL [-2]**  
**1:500**

**GENERAL CONCOURSE**  
**LEVEL [-2]**  
-7400

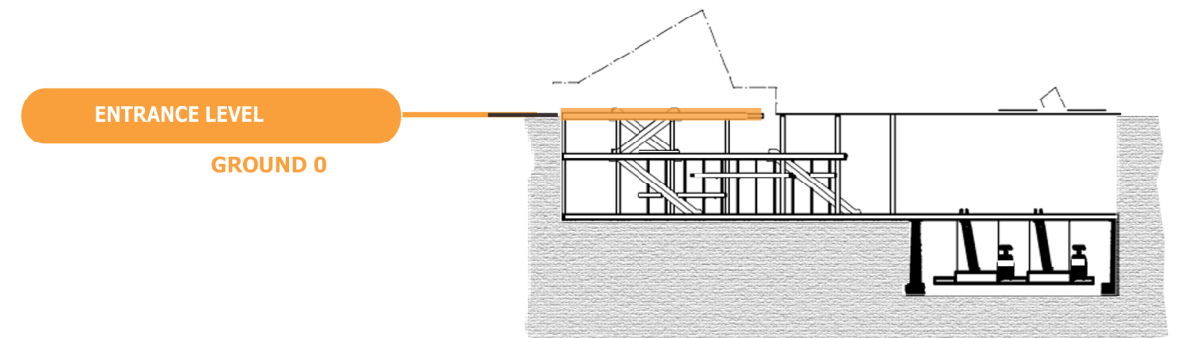


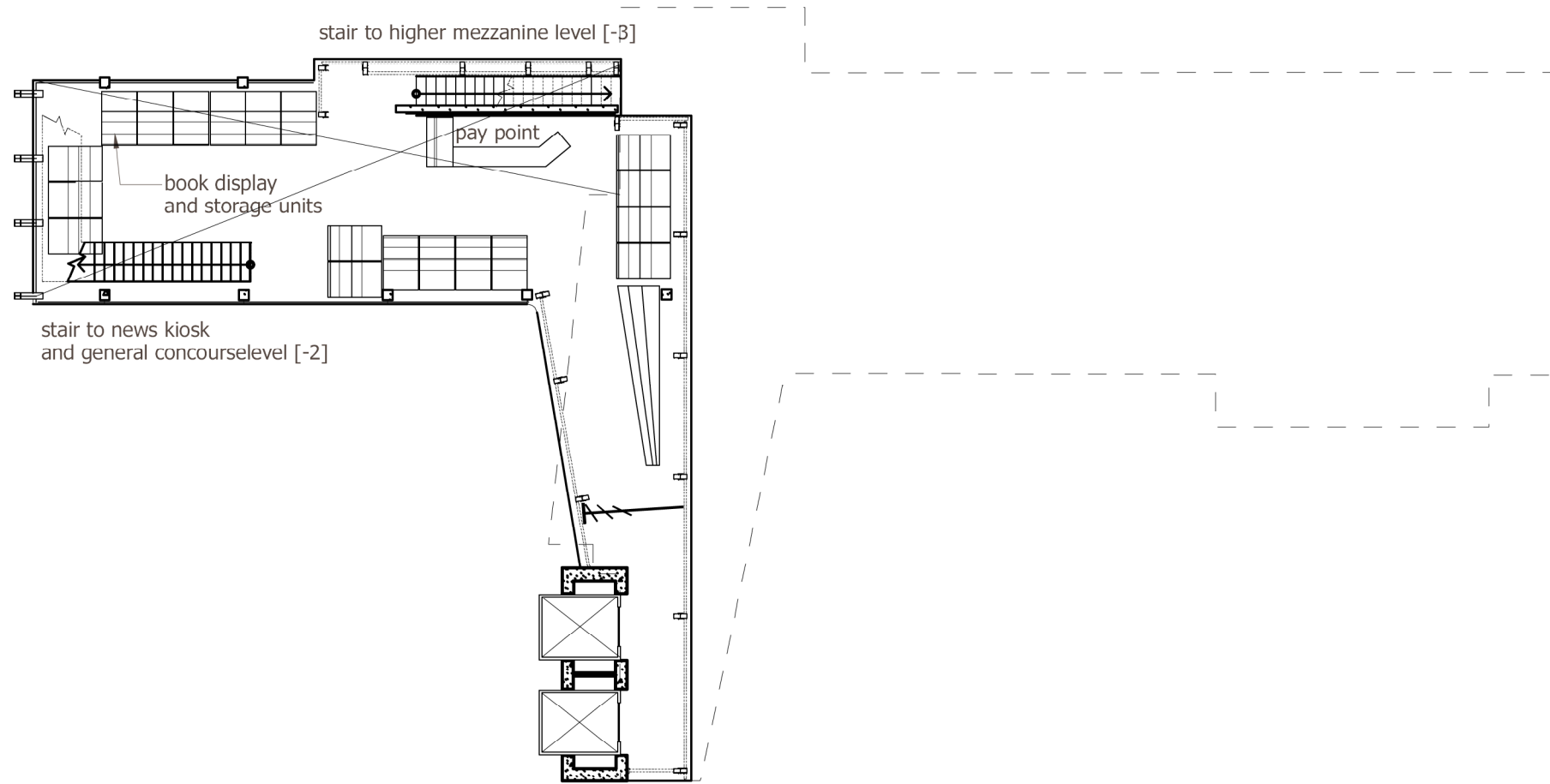


**PLAN ENTRANCE LEVEL  
1:500**

## DRAWING 005

**PLAN  
ENTRANCE LEVEL  
1:500**



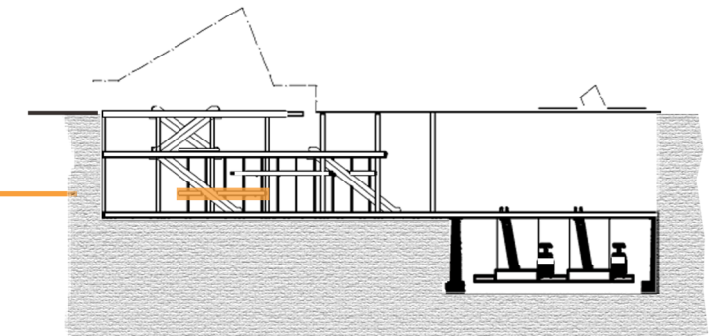


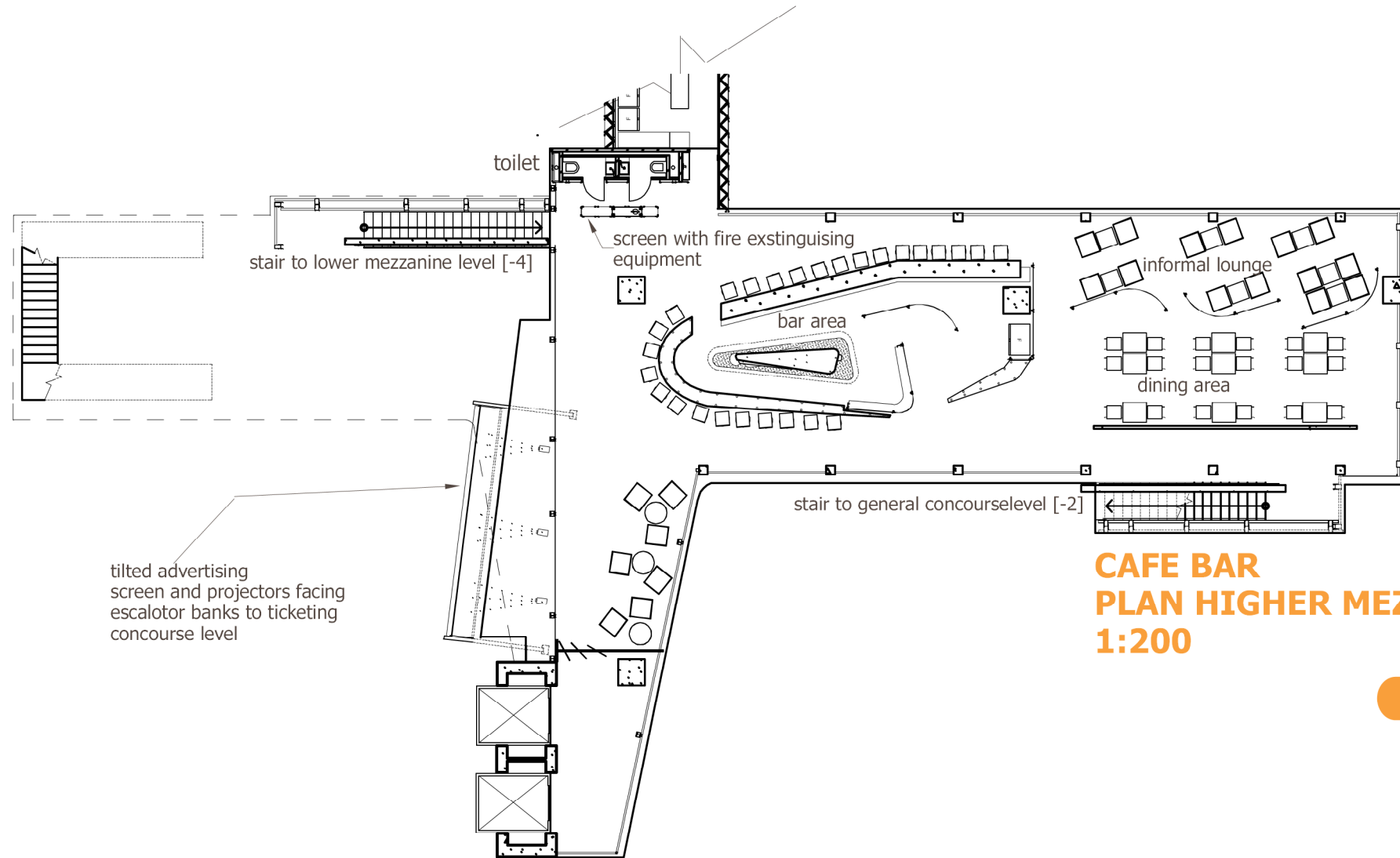
**BOOKSHOP**  
**PLAN LOWER MEZZANINE LEVEL [-4]**  
**1:200**

## DRAWING 006

**PLAN**  
**LOWER MEZZANINE**  
**LEVEL [-4]**  
**1:200**

LOWER MEZZANINE  
LEVEL [-4]  
-14800

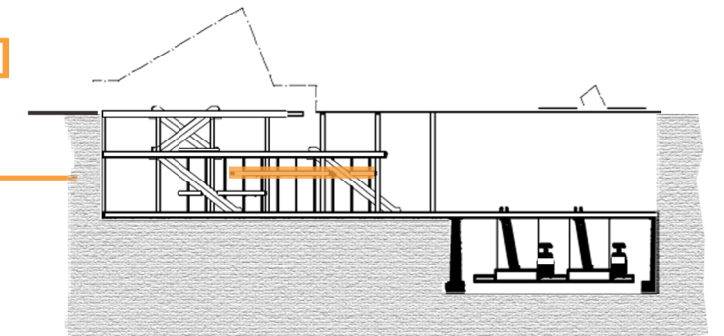




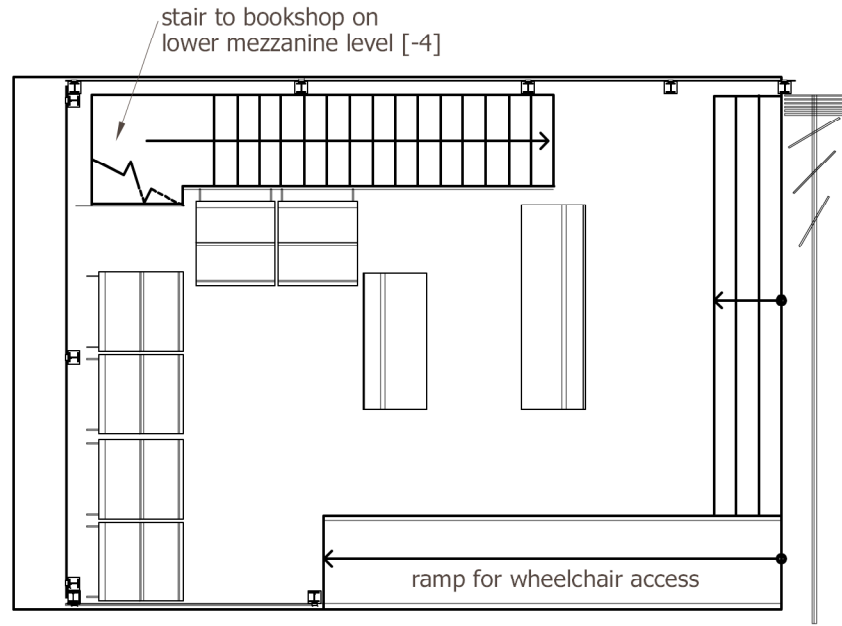
**DRAWING 007**  
**PLAN**  
**HIGHER MEZZANINE**  
**LEVEL [-3]**  
**1:200**

**CAFE BAR**  
**PLAN HIGHER MEZZANINE LEVEL [-3]**  
**1:200**

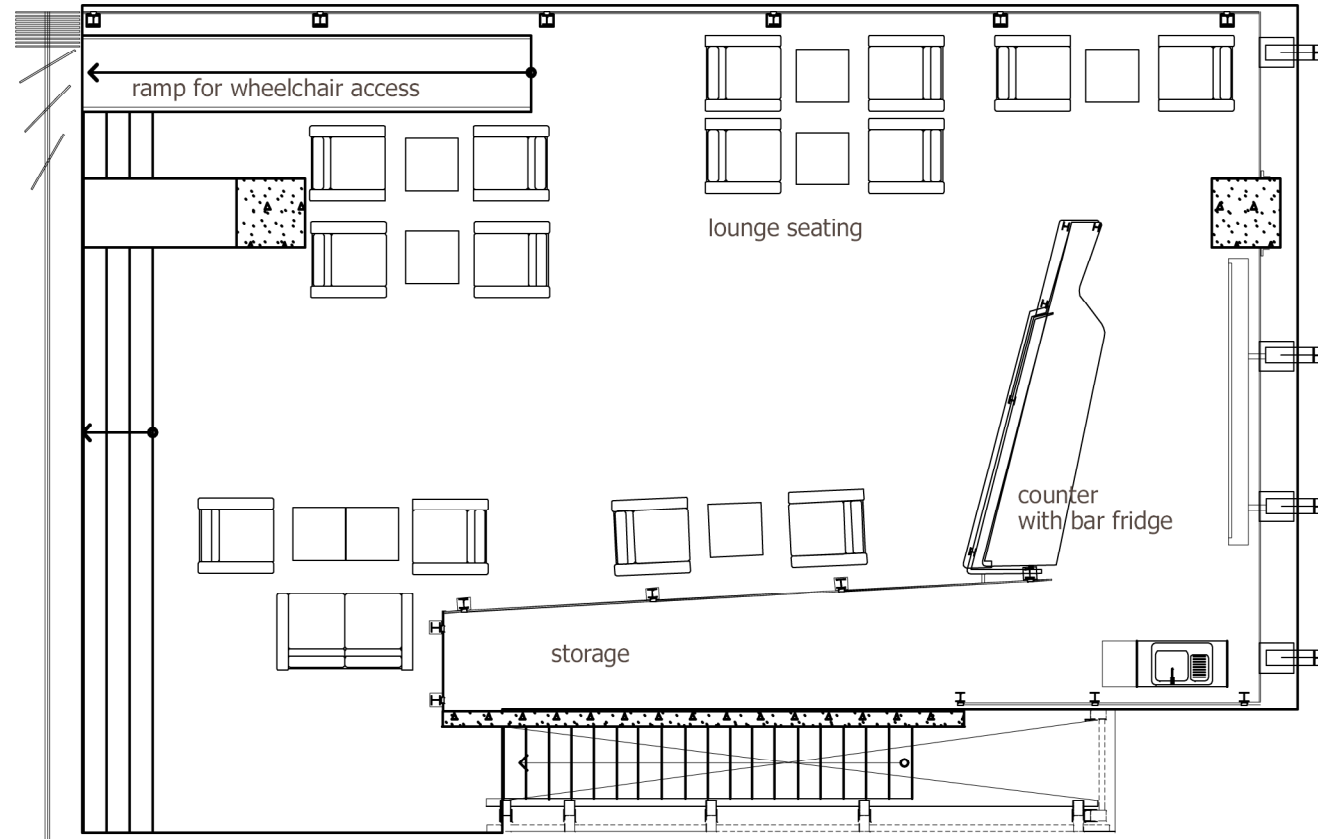
HIGHER MEZZANINE  
LEVEL [-3]  
-11100







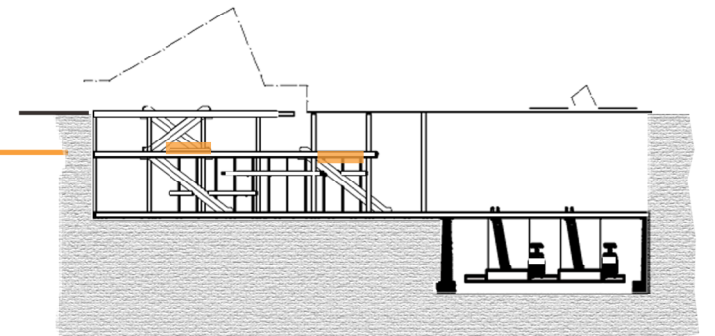
**NEWS KIOSK**  
**PLAN GENERAL CONCOURSE LEVEL [-2]**  
**1:100**

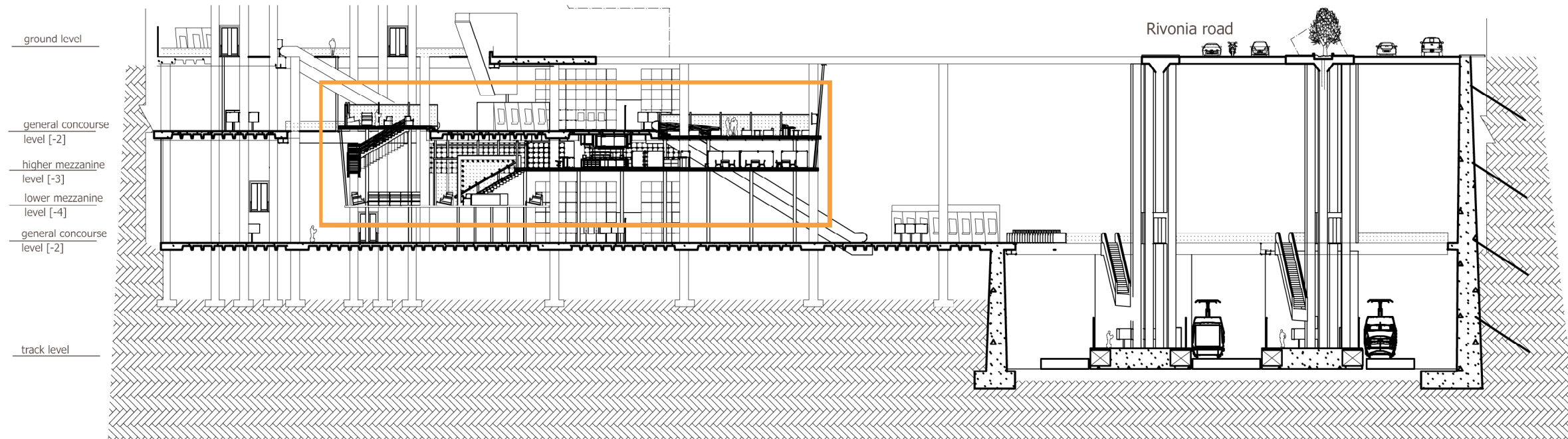


**COFFEE EXPRESS BAR**  
**PLAN GENERAL CONCOURSE LEVEL [-2]**  
**1:100**

**DRAWING 008**  
**PLAN**  
**GENERAL CONCOURSE**  
**LEVEL [-2]**  
**DECK**  
**EXPRESS COFFEE BAR**  
**NEWS KIOSK**  
**1:100**

GENERAL CONCOURSE LEVEL [-2]  
 DECS  
 -6900 & 7900

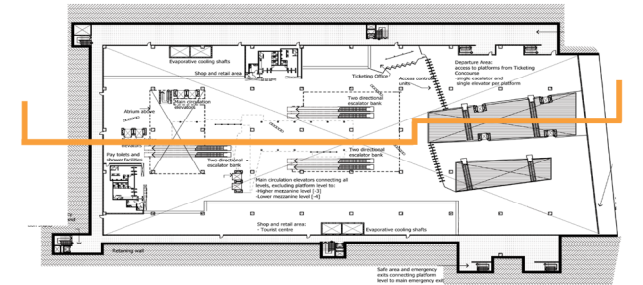


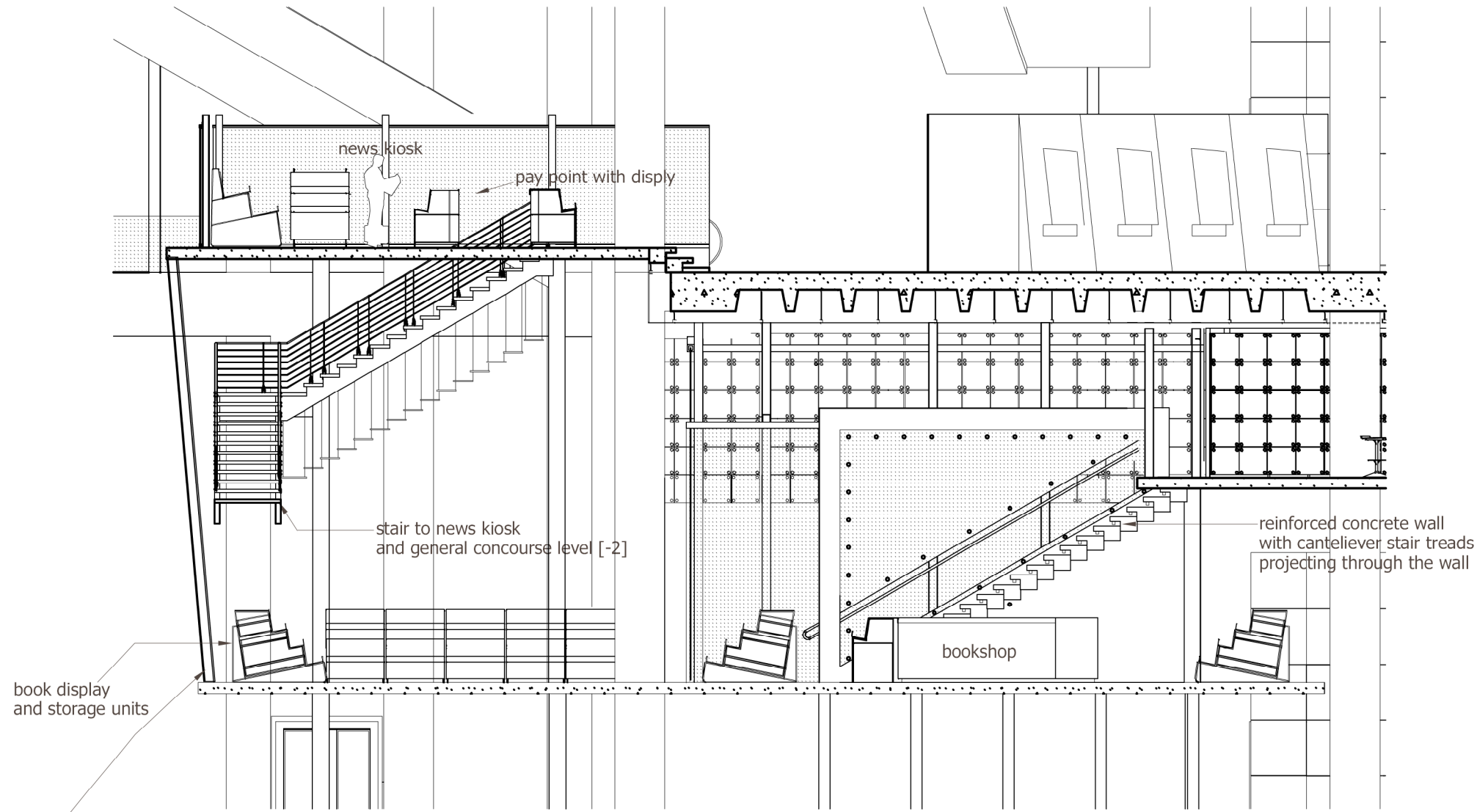


# DRAWING 009

## SECTION AA 1:500

## SECTION AA 1:500

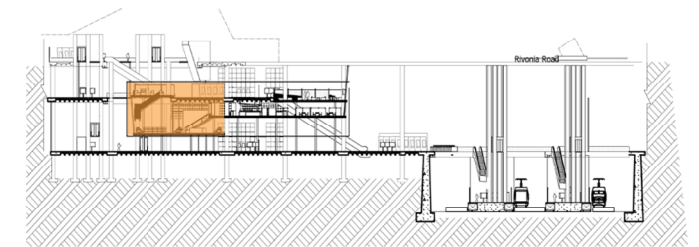


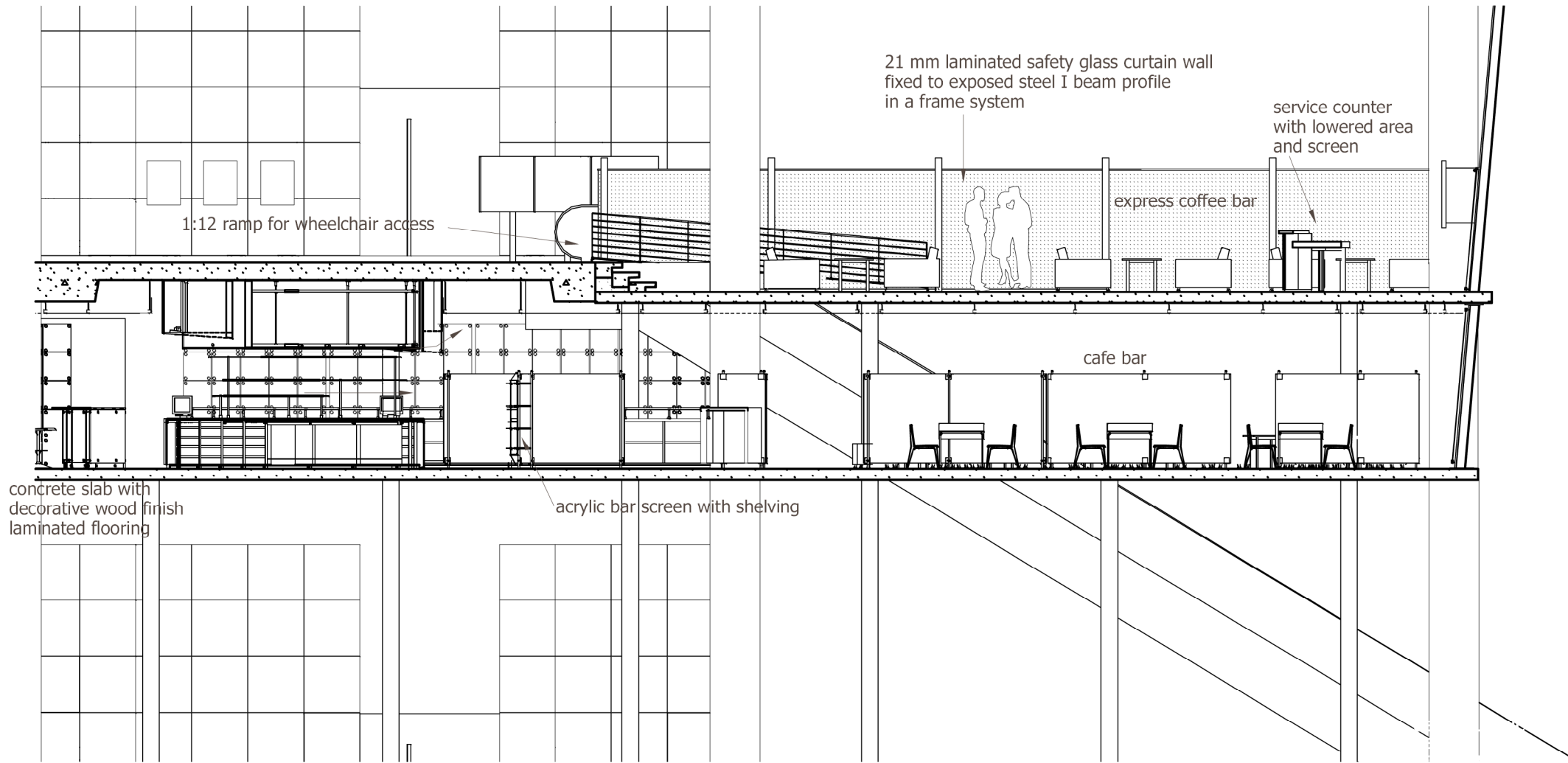


21 mm laminated safety glass curtain wall fixed to exposed steel i beam profile with stainless steel profile and bolts

**SECTION AA PORTION 01  
1:100**

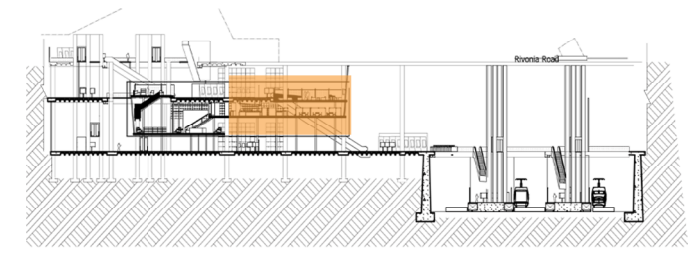
**DRAWING 010  
SECTION  
AA ENLARGED PORTION 01  
1:100**

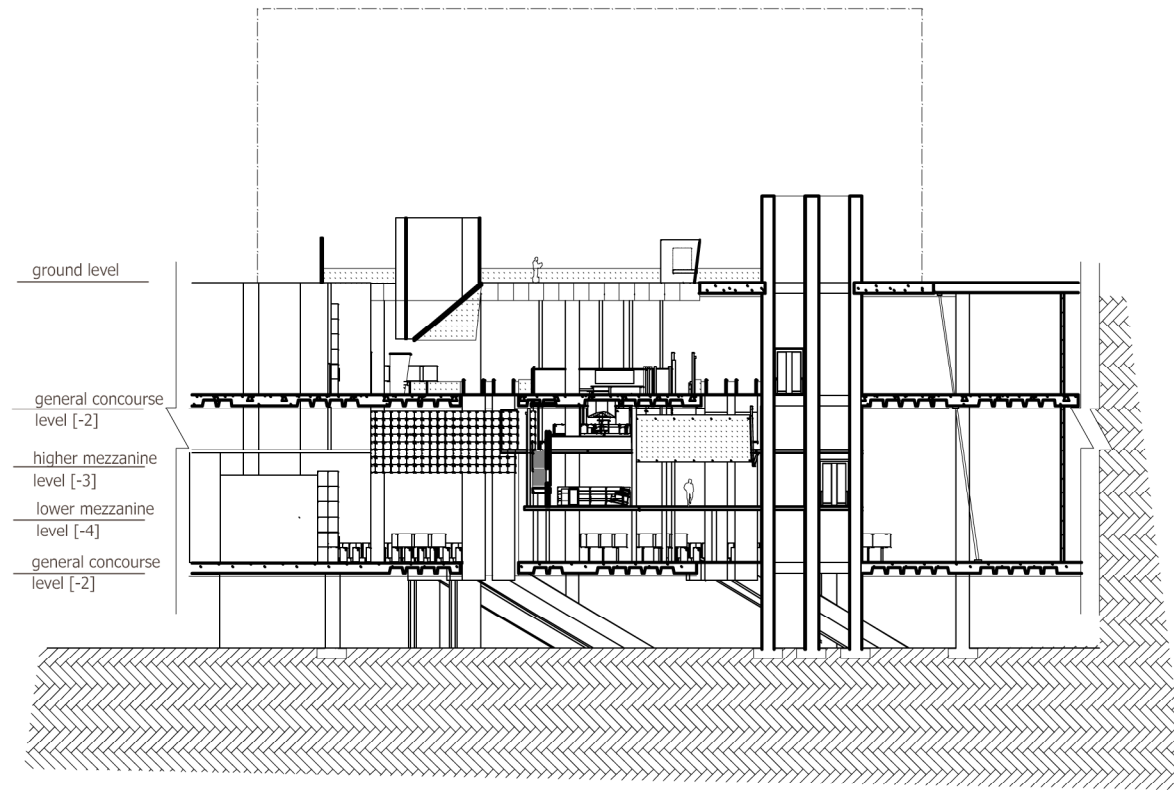




**DRAWING 011**  
**SECTION**  
**AA ENLARGED PORTION 02**  
**1:100**

**SECTION AA PORTION 02**  
**1:100**

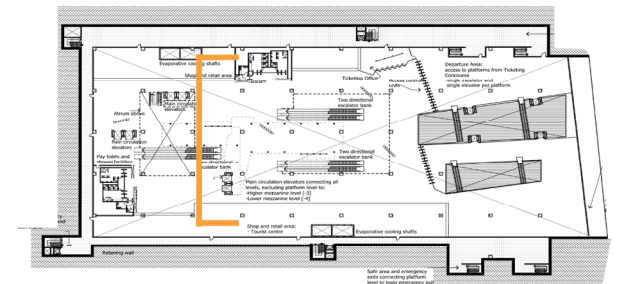


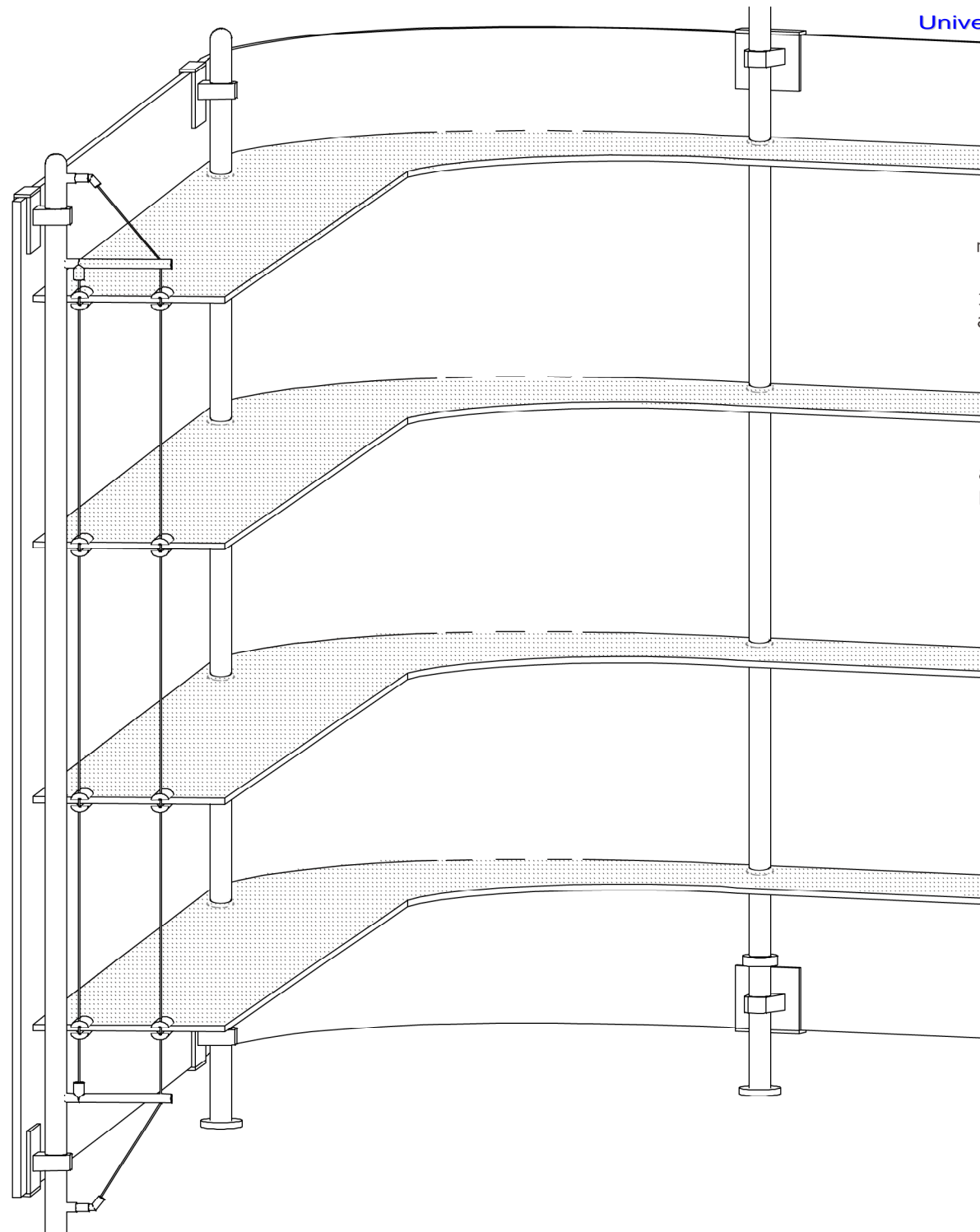


**SECTION BB**  
**1:500**

## DRAWING 012

**SECTION**  
**BB**  
**1:500**



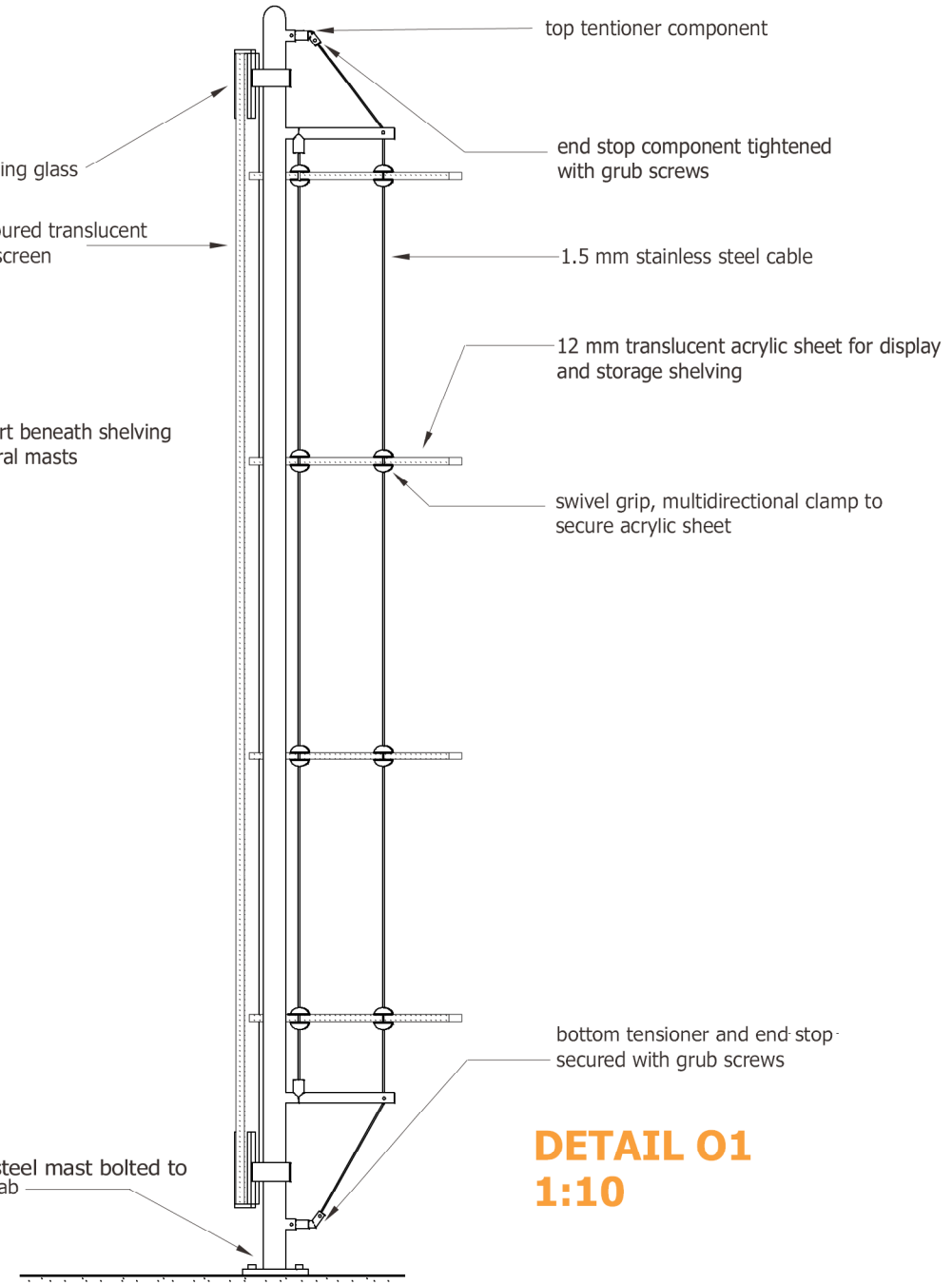


mast frame housing glass

12 mm bent coloured translucent acrylic sheet as screen

additional support beneath shelving provided in central masts

stainless steel mast bolted to concrete slab



top tensioner component

end stop component tightened with grub screws

1.5 mm stainless steel cable

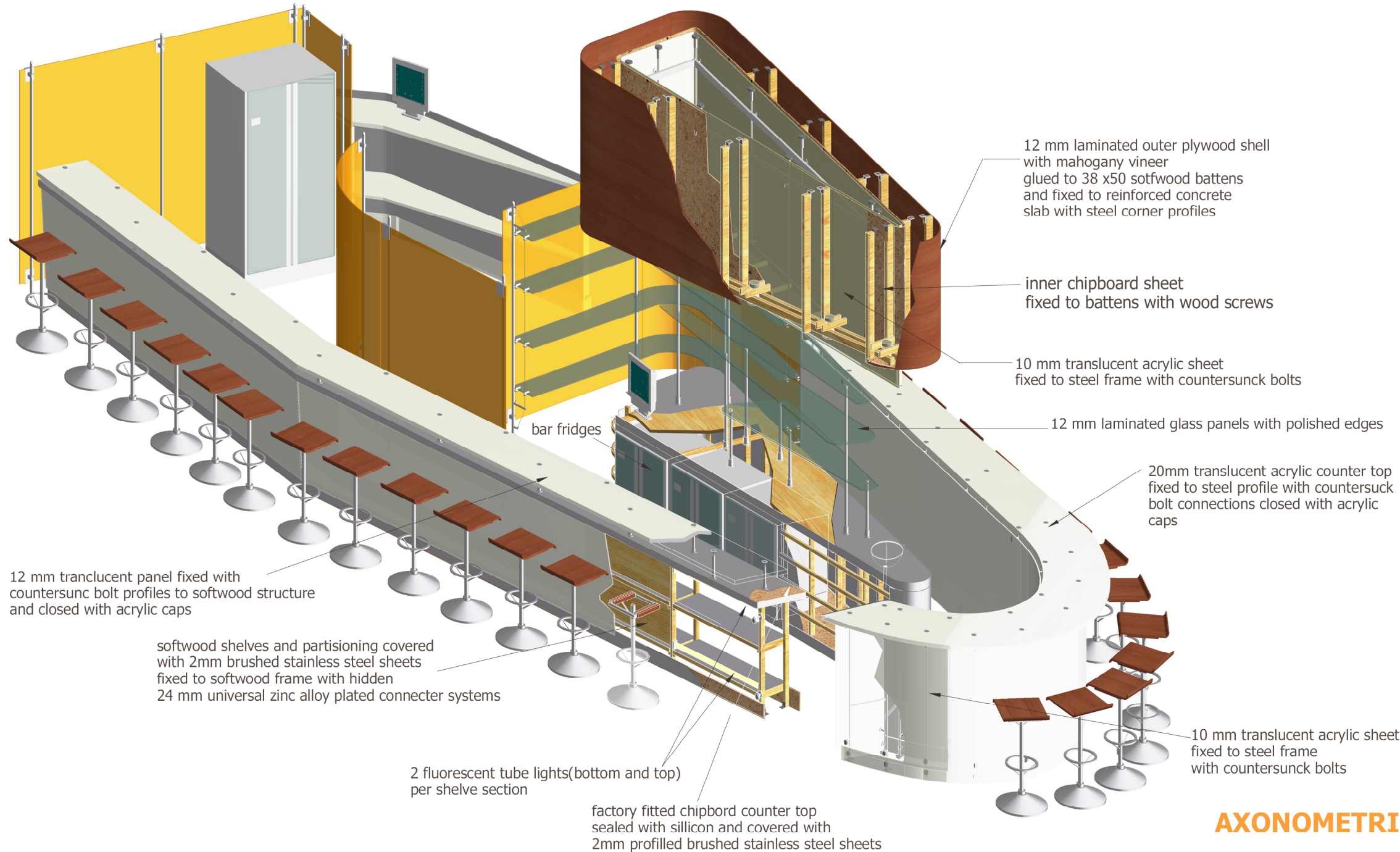
12 mm translucent acrylic sheet for display and storage shelving

swivel grip, multidirectional clamp to secure acrylic sheet

bottom tensioner and end stop secured with grub screws

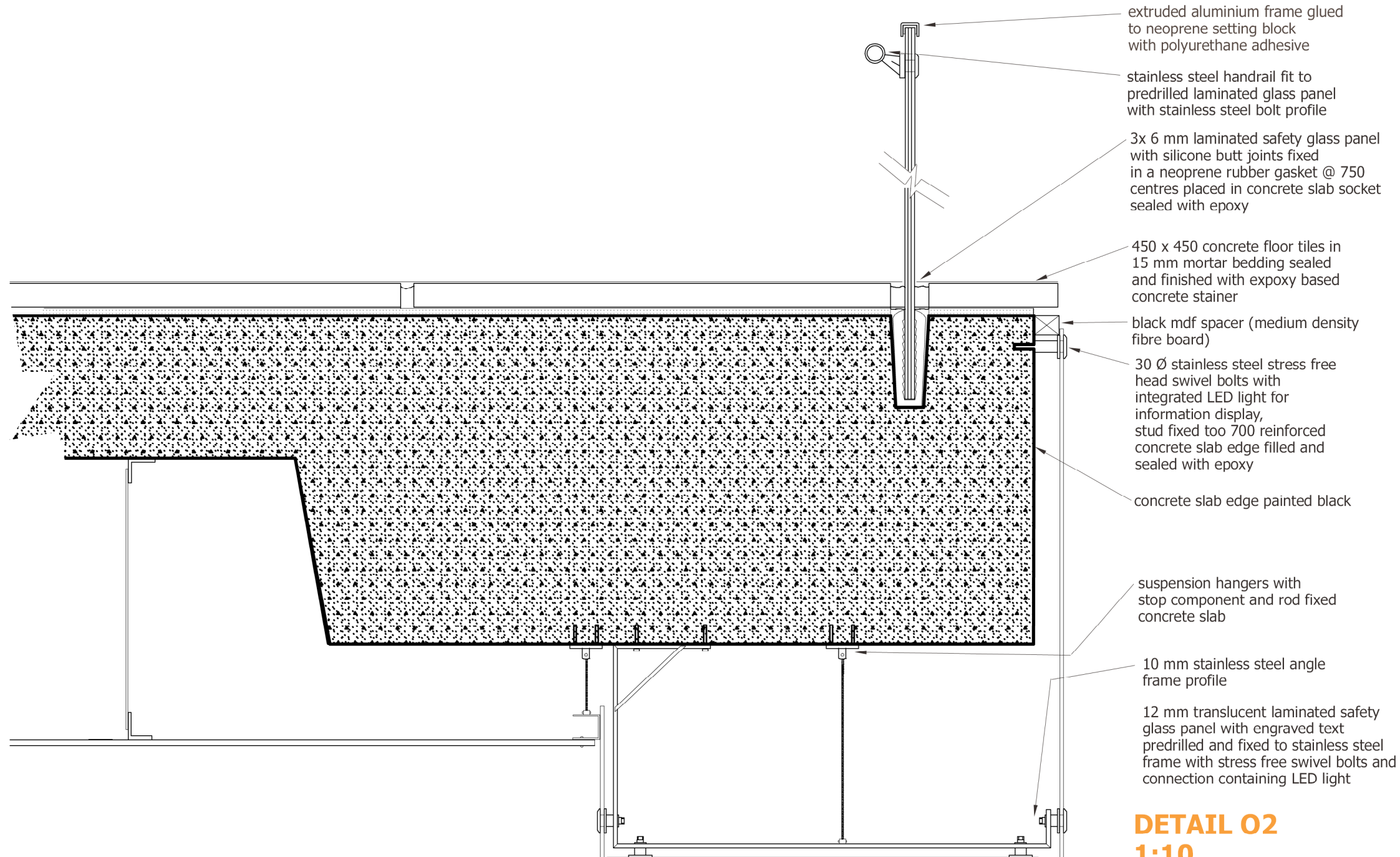
**DETAIL O1**  
**1:10**

**DRAWING 013**  
**DETAIL 01**  
**TRANSLUCENT BAR SCREEN**  
**1:100**



**DRAWING 014**  
**AXONOMETRIC OF**  
**CAFE BAR, BAR AREA**

**AXONOMETRIC**



## DRAWING 015

### DETAIL 02 SLAB EDGE DETAIL 1:10

### DETAIL 02 1:10