



# 8



## TECHNICAL DRAWINGS

This chapter includes the technical drawings developed from the technical investigation done in the previous chapter. The drawings here are those used in the November examination, illustrating the progression from design development through to resolution.

The chapter starts off with the larger elements of the intervention including the site plan, ground floor plan, first floor plan and sections, ending off with drawings that have a more detailed focus relating to the concept, referring particularly to the parts in relation to the whole. It aims to refine the developmental character of the technical investigation by encompassing technical design drawings.





Figure 8.2: Ground Floor- not to scale\_ November exam (Author, 2011).





Figure 8.3: First Floor- not to scale\_ November exam (Author, 2011).





## 8.2 SECTIONS

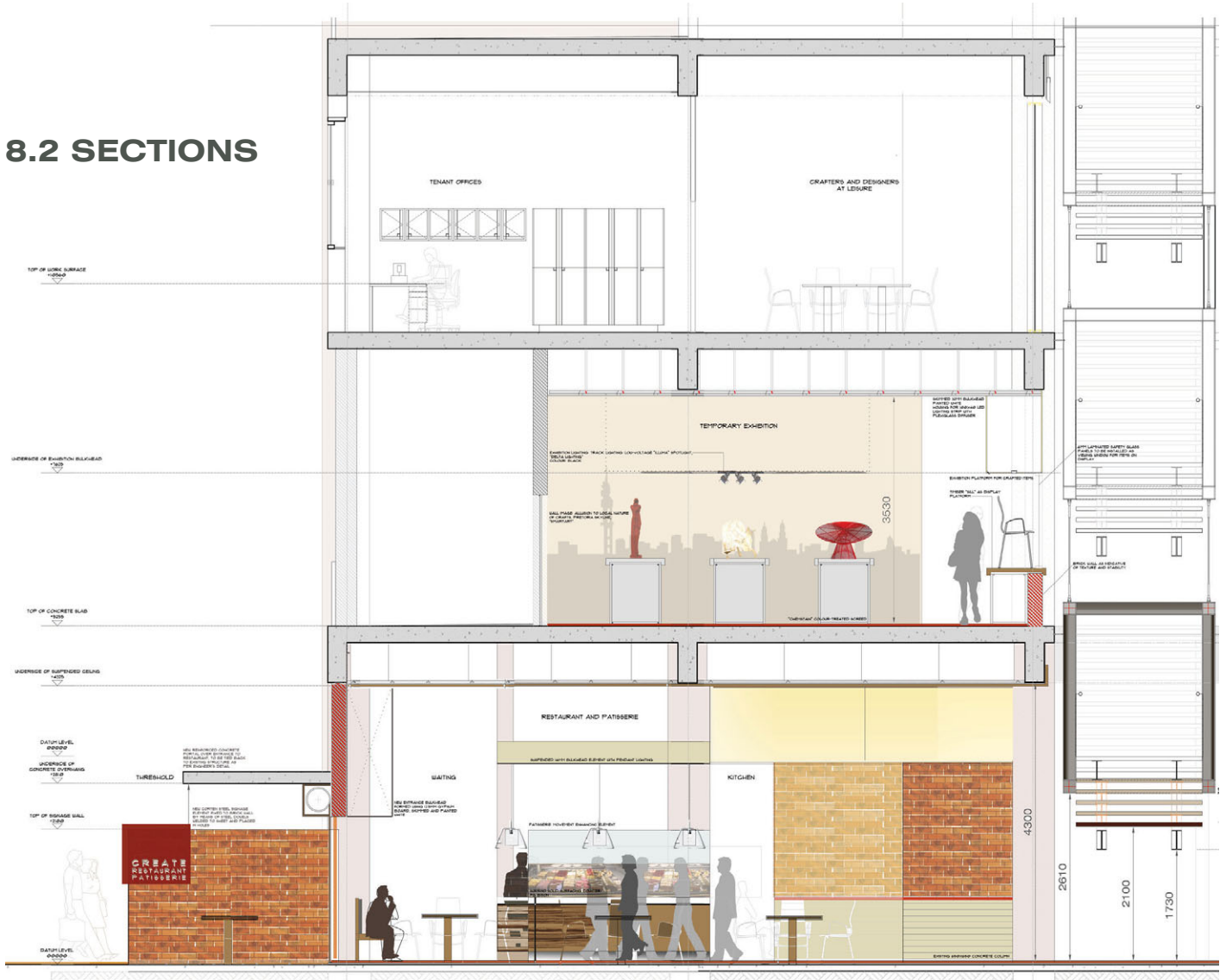


Figure 8.4: Section AA- not to scale\_ November exam (Author, 2011).



(see Figure 8.5)

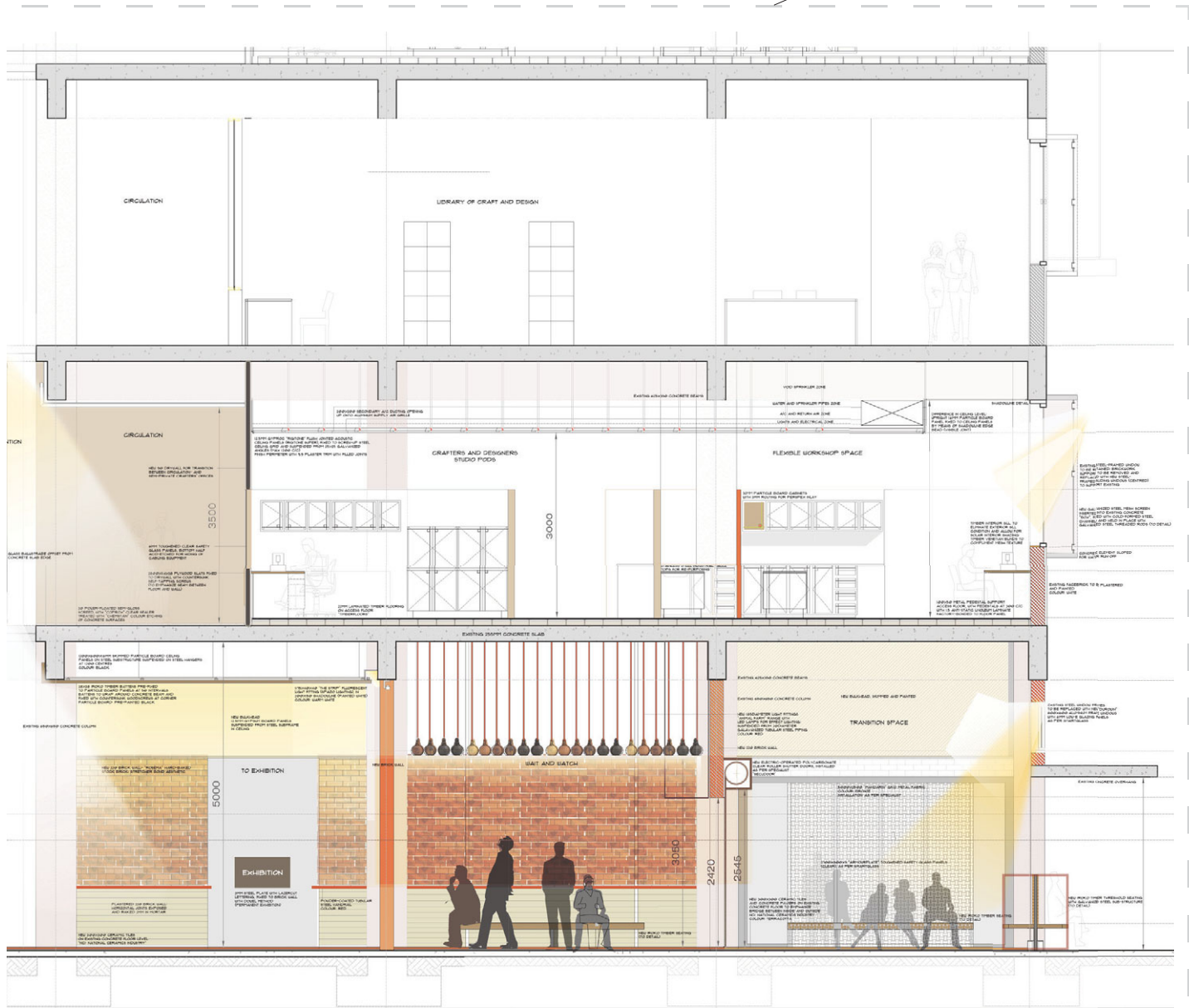
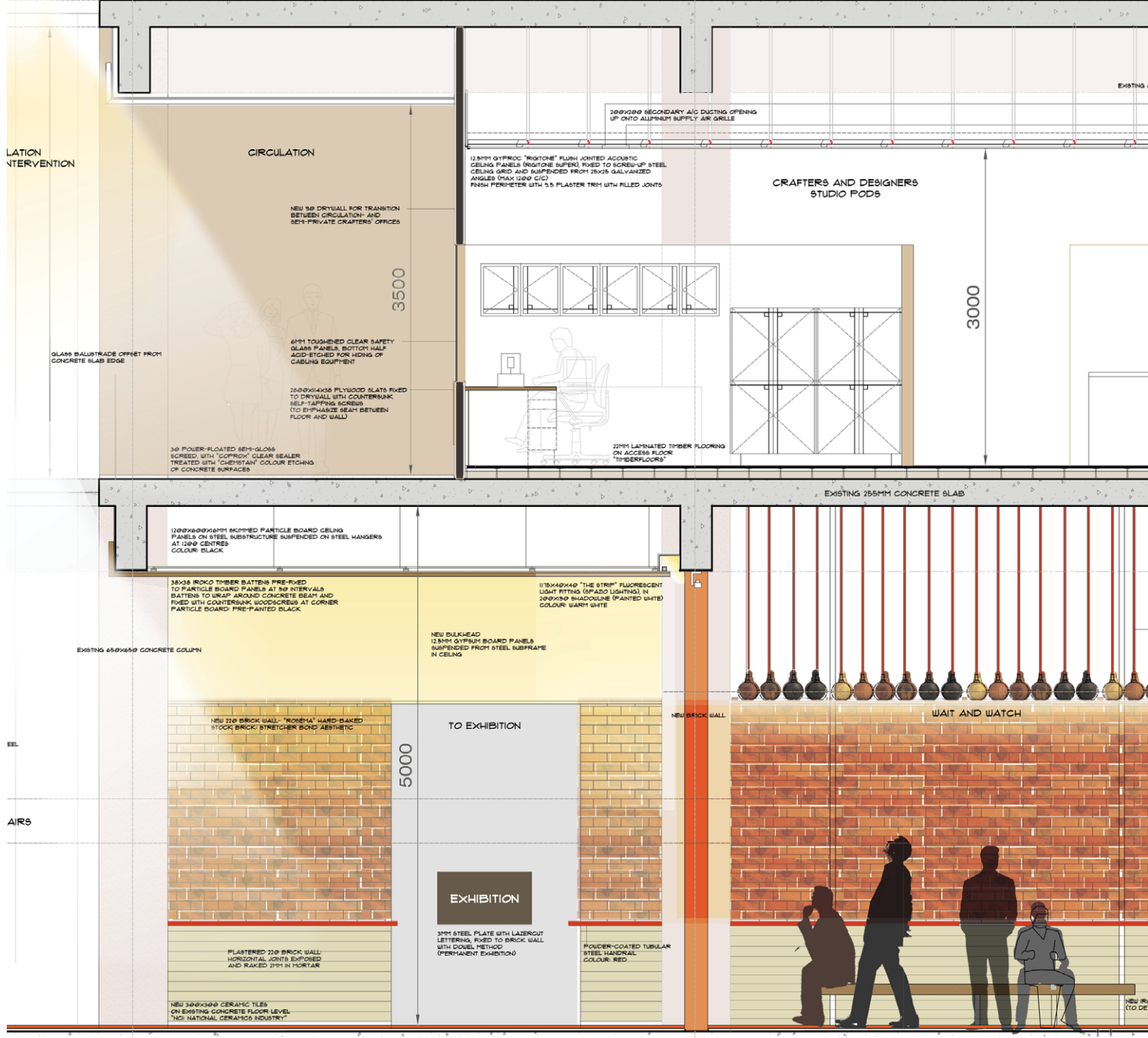
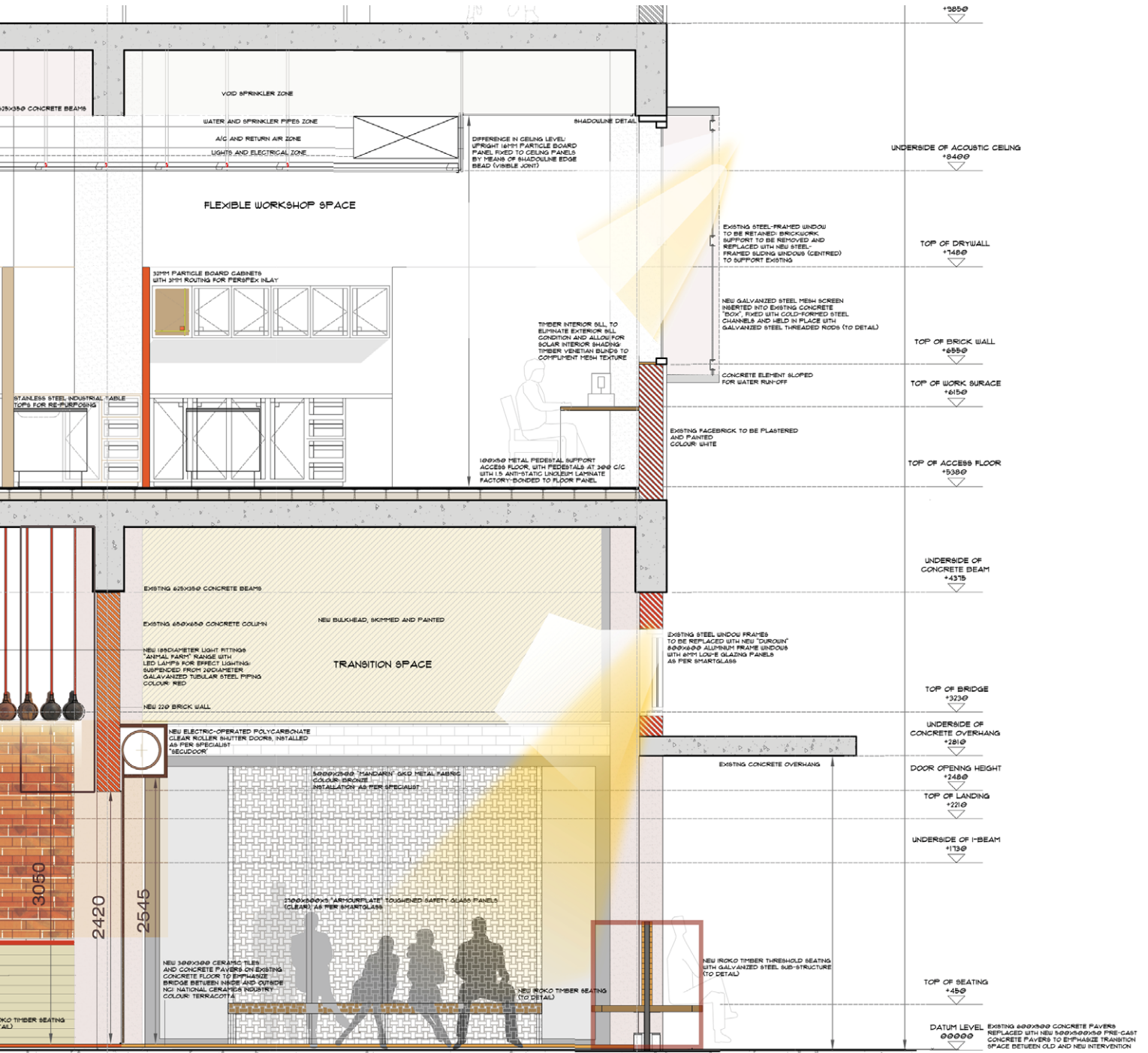




Figure 8.5: Section AA (partial)- not to scale November exam (Author, 2011).







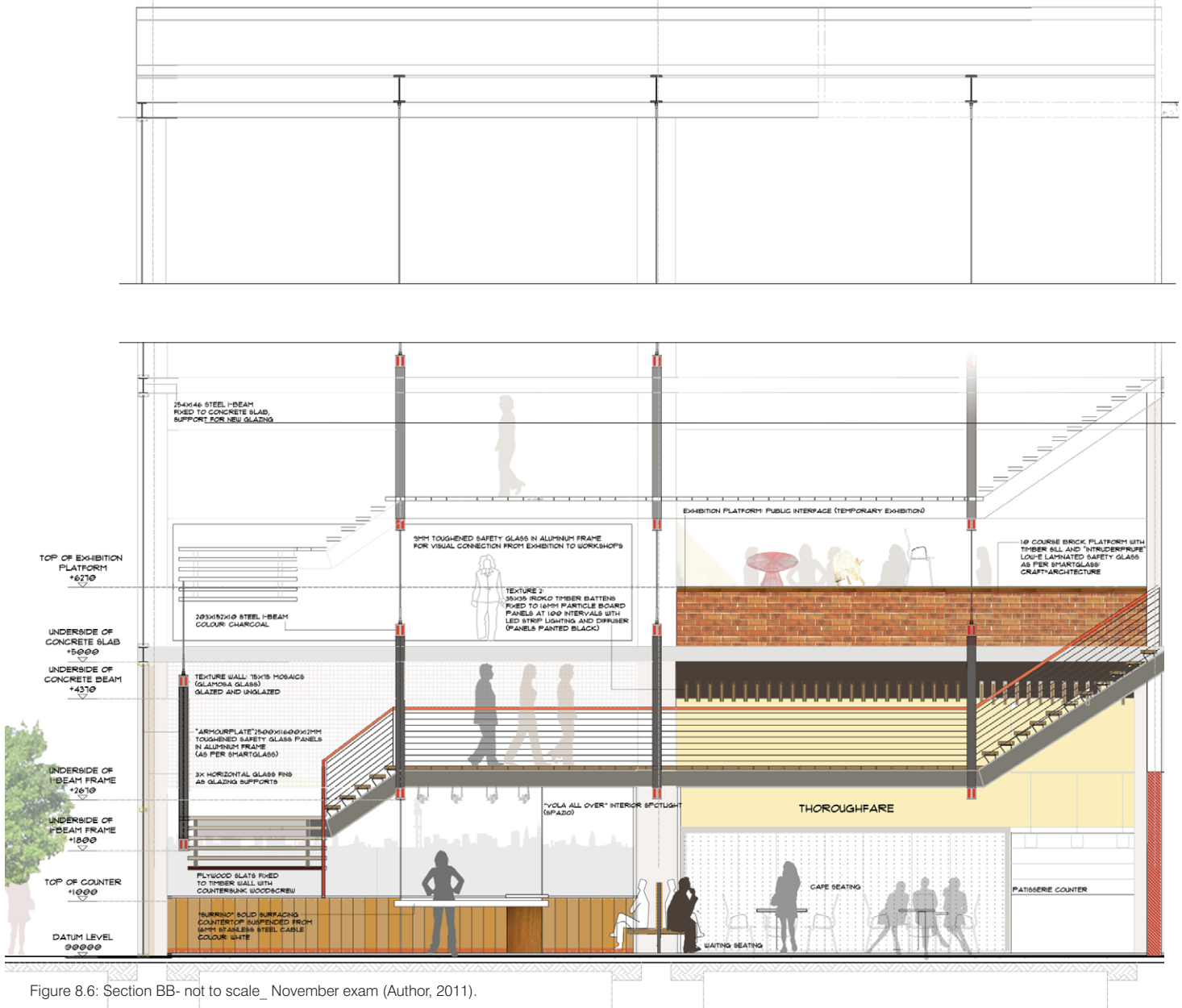


Figure 8.6: Section BB- not to scale\_ November exam (Author, 2011).

Figure 8.7: Detail of roof insertion- not to scale\_ November exam (Author, 2011).

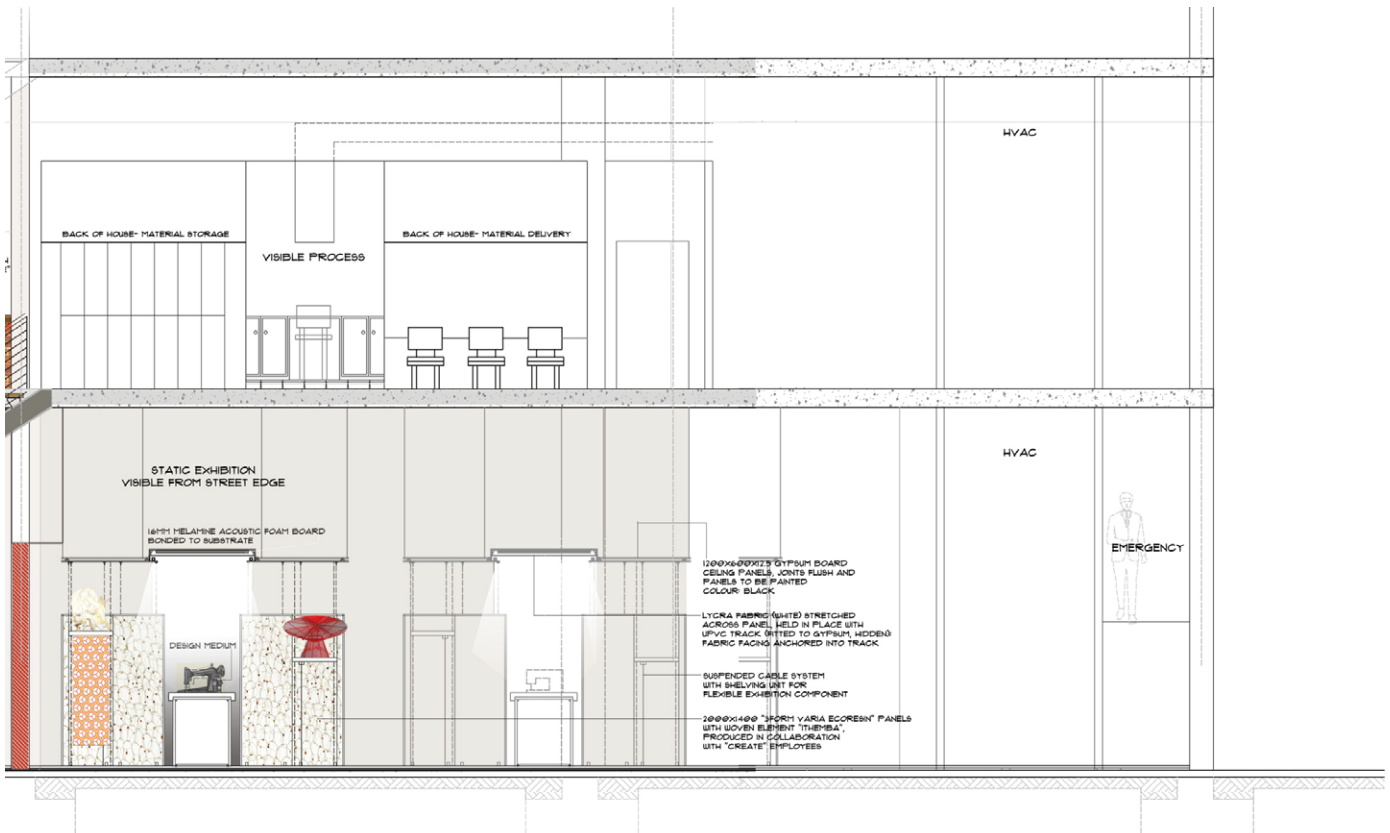
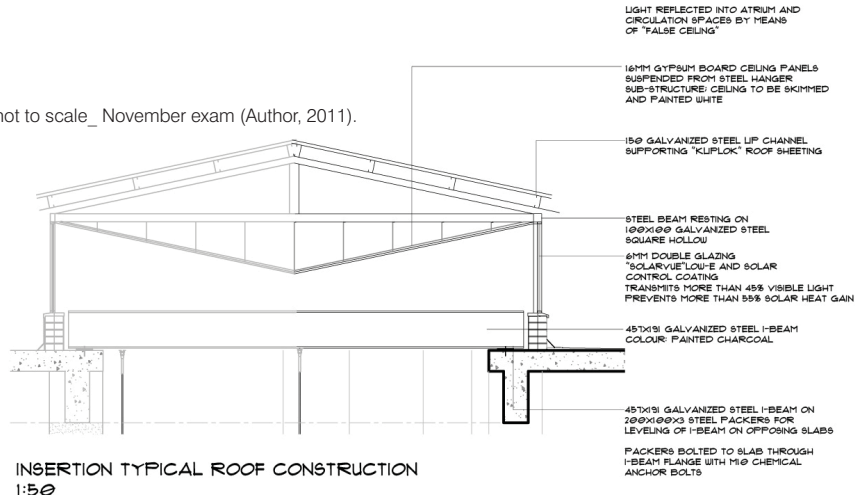






Figure 8.8-8.11: Existing building elevation with new screens- not to scale\_ November exam (Author, 2011).



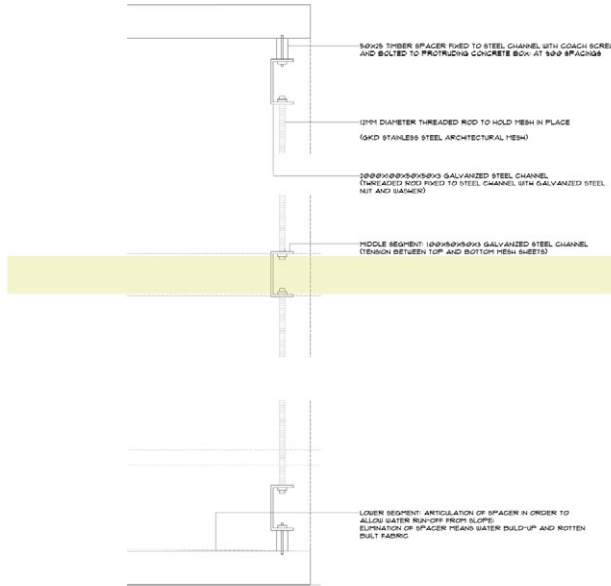
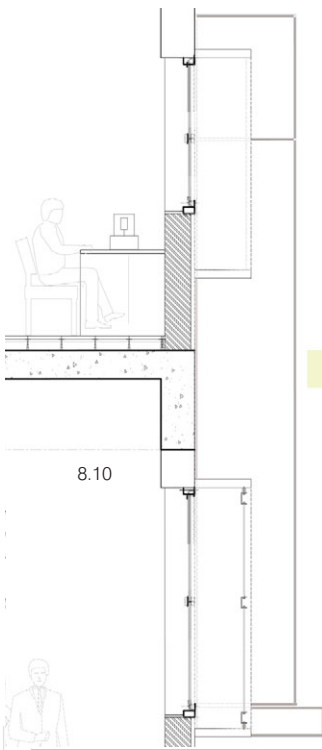
### 8.3 ELEVATIONS AND DETAILS



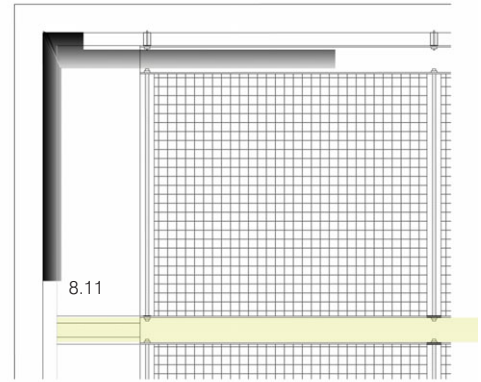
Figure 8.12: West elevation- not to scale\_ November exam (Author, 2011).



UNIVERSITEIT VAN PRETORIA  
UNIVERSITY OF PRETORIA  
YUNIBESITHI YA PRETORIA



MESH SCREEN DETAIL  
1:5



MESH SCREEN ELEVATION  
1:1 @



- UNDERSIDE OF CONCRETE FRAME  
+6265
- UNDERSIDE OF WINDOW  
+5305
- TOP OF WINDOW  
+4025
- UNDERSIDE OF CONCRETE OVERHANG  
+3460
- UNDERSIDE OF CONCRETE OVERHANG  
+2810
- DOOR OPENING HEIGHT  
+2480
- TOP OF SEATING  
+450
- DATUM LEVEL  
00000



# DETAIL "THE SEAM"

STAIRS AND BRIDGE

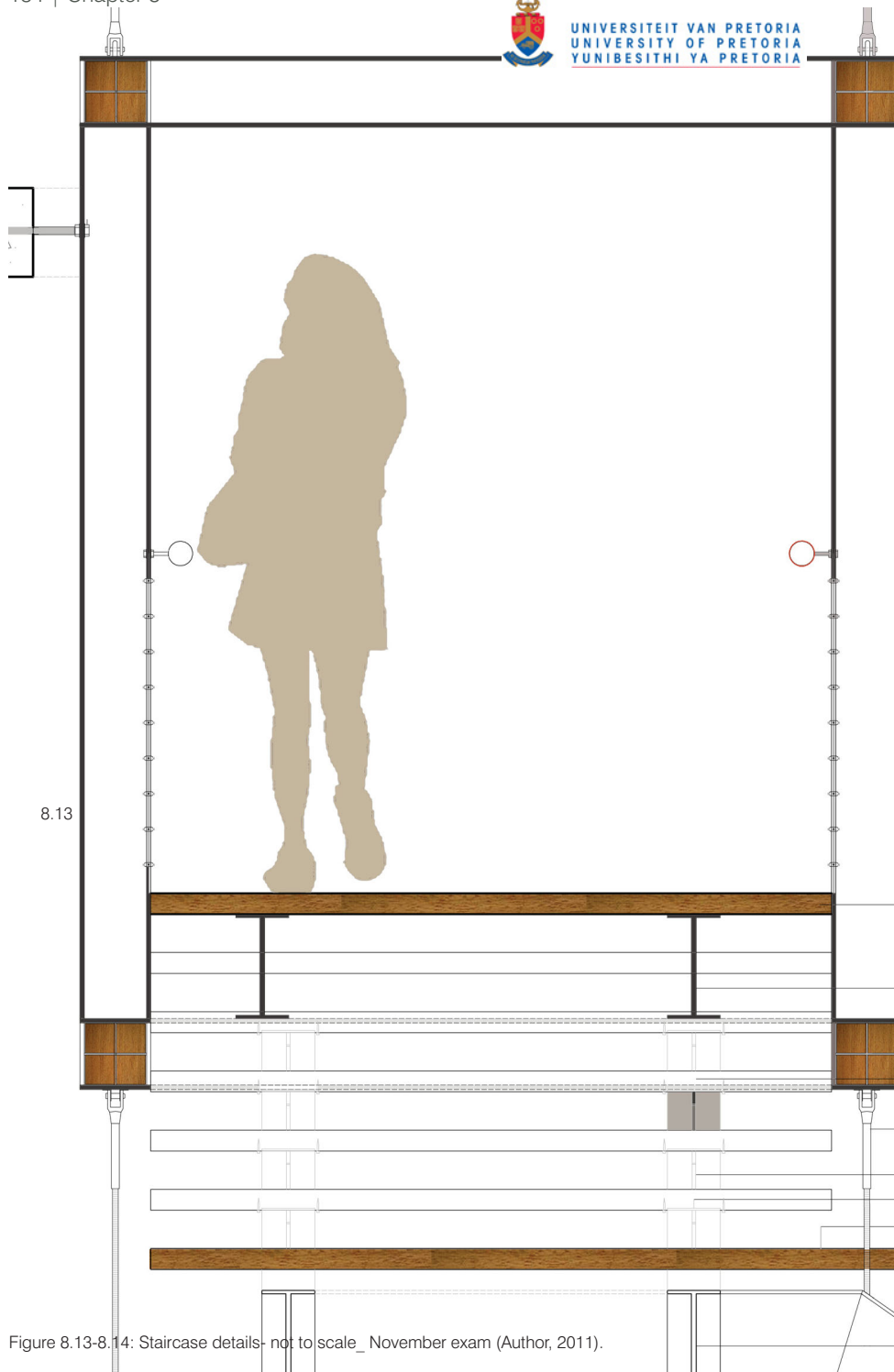
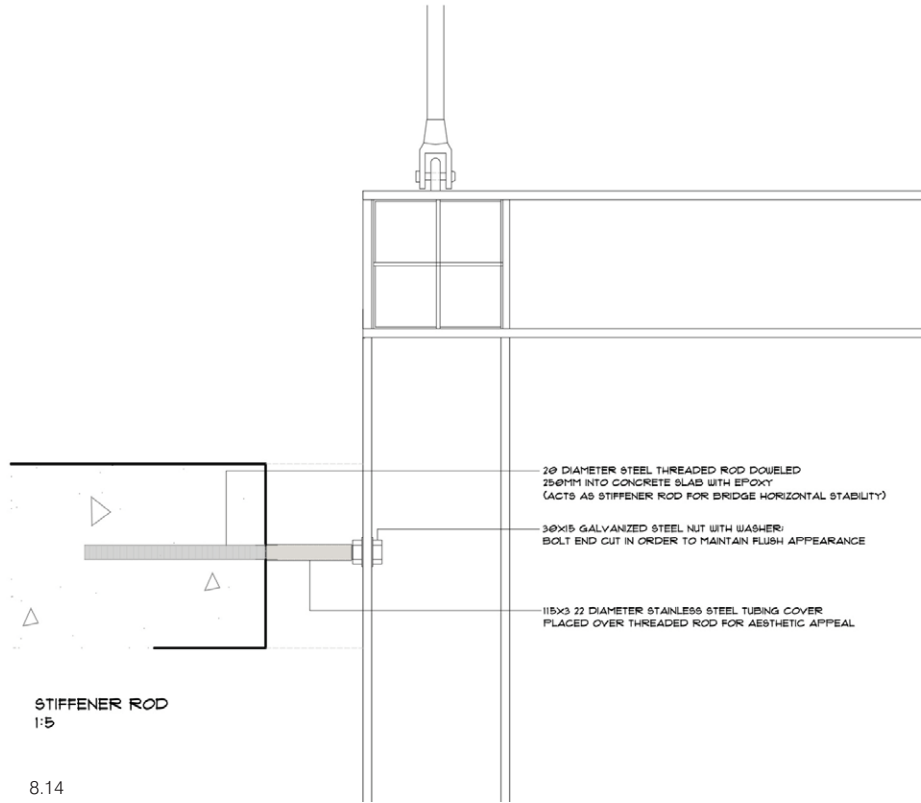


Figure 8.13-8.14: Staircase details- not to scale\_ November exam (Author, 2011).





8.14

2000x250x60 IROKO TIMBER SLAT FIXED TO 305x165x12 STEEL I-BEAM RUNNER WITH COACH SCREW TO COLD-FORMED 100x50x3 STEEL ANGLES

305x165x12 STEEL I-BEAM RUNNER, PAINTED BLACK

10MM STEEL PLATE WELDED TO I-BEAM WEB-LENGTH

195x250x60 IROKO TIMBER SLAT FIXED TO 305x165x12 STEEL I-BEAM RUNNER WITH COACH SCREW TO COLD-FORMED 100x50x3 STEEL ANGLES

SWAGED CLEVIS 16MM DIAMETER STAINLESS STEEL STRUCTURAL CABLE, MODEL 30801, WELDED TO I-BEAM "JAKOB INOX LINE"

305x165x12 STEEL I-BEAM SECONDARY RUNNER, PAINTED BLACK

6MM ROUTING IN TIMBER TREAD (FIXING OF STEEL SUPPORT TO I-BEAM RUNNER)

2000x1600x60 TIMBER SLATTED LANDING, FIXED TO SECONDARY RUNNERS BY MEANS OF 100x50x3 COLD-FORMED STEEL ANGLES

2000x250x60 IROKO TIMBER TREAD FIXED TO 305x165x12 I-BEAM STRINGER BY MEANS OF 10MM DIAMETER ANGLED STEEL SUPPORT CENTRED ON 200x200 STEEL PLATE, RECESSED 6MM IN TIMBER TREAD AND FIXED WITH GALVANIZED M10 COACH SCREW

305x165x12 STEEL I-BEAM SECONDARY RUNNER, PAINTED BLACK

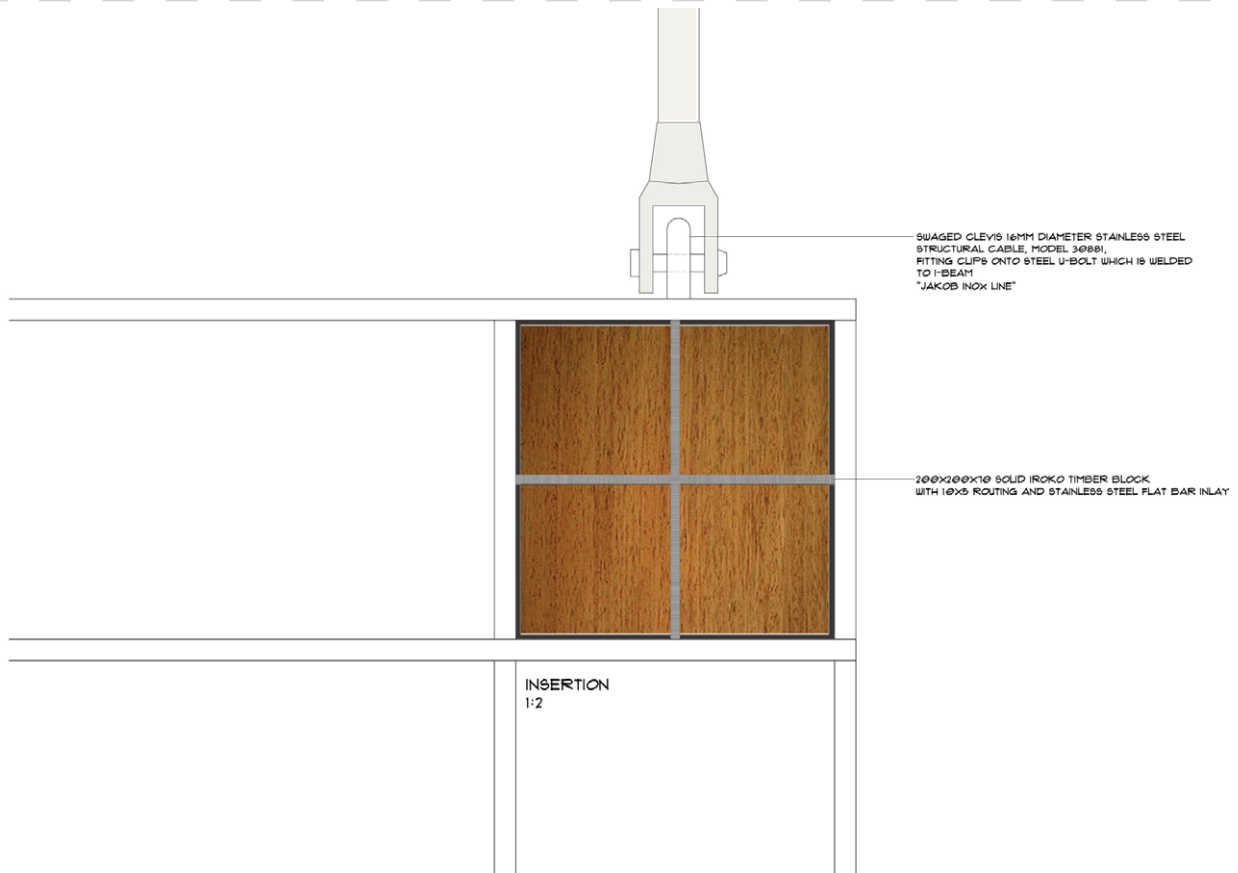
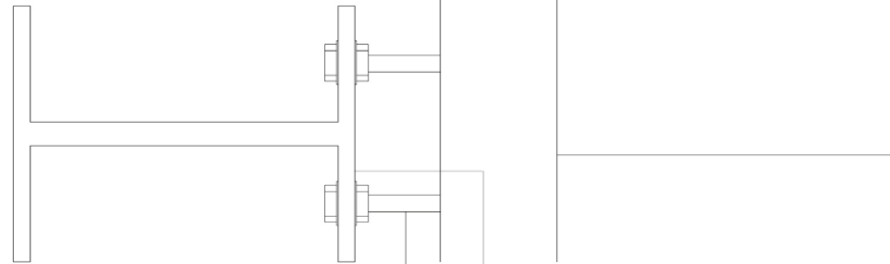


Figure 8.15: Corner detail of frame- not to scale\_ November exam (Author, 2011).



8.16



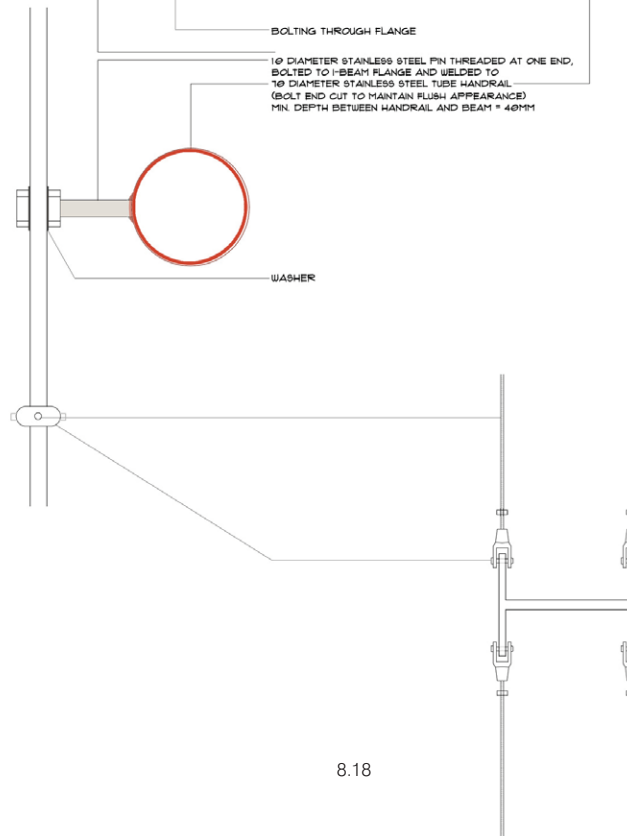
PLAN  
HANDRAIL  
1:2



SECTION  
HANDRAIL AND BALUSTRADE  
1:2

8.17

8.18



8.19



Figure 8.16-8.18: Handrail and balustrade detail- not to scale\_ November exam (Author, 2011).

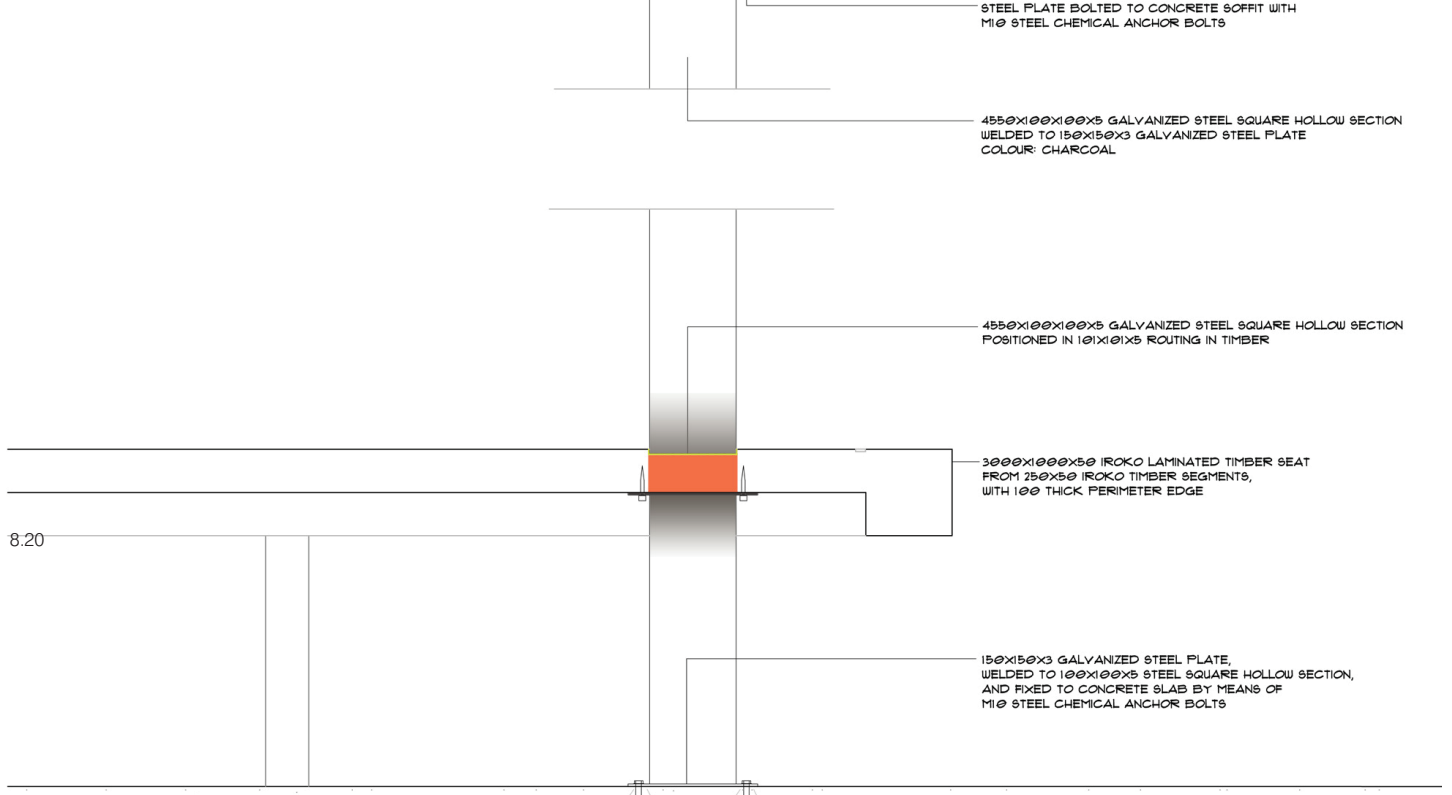
Figure 8.19: Location of detail in building- not to scale\_ November exam (Author, 2011).





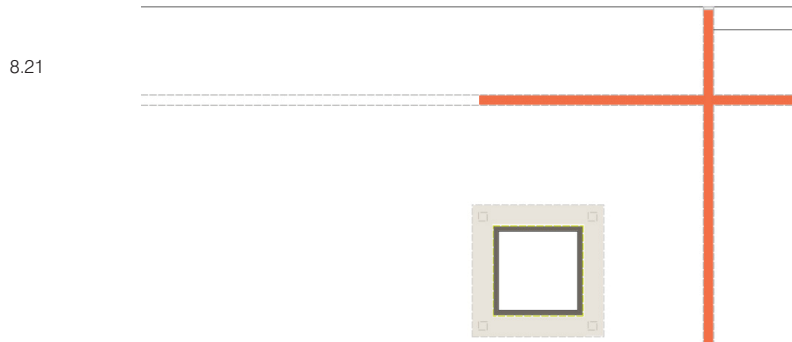
# DETAIL

PERMANENT THOROUGHFARE SEATING



SECTION ILLUSTRATING "THREADING"  
1:5

PLAN  
1:5



8.21



Figure 8.20-8.21: Permanent seating details- not to scale\_ November exam (Author, 2011).

Figure 8.22: Location of detail in building- not to scale\_ November exam (Author, 2011).



**DETAIL**  
EXTERIOR THRESHOLD SEATING

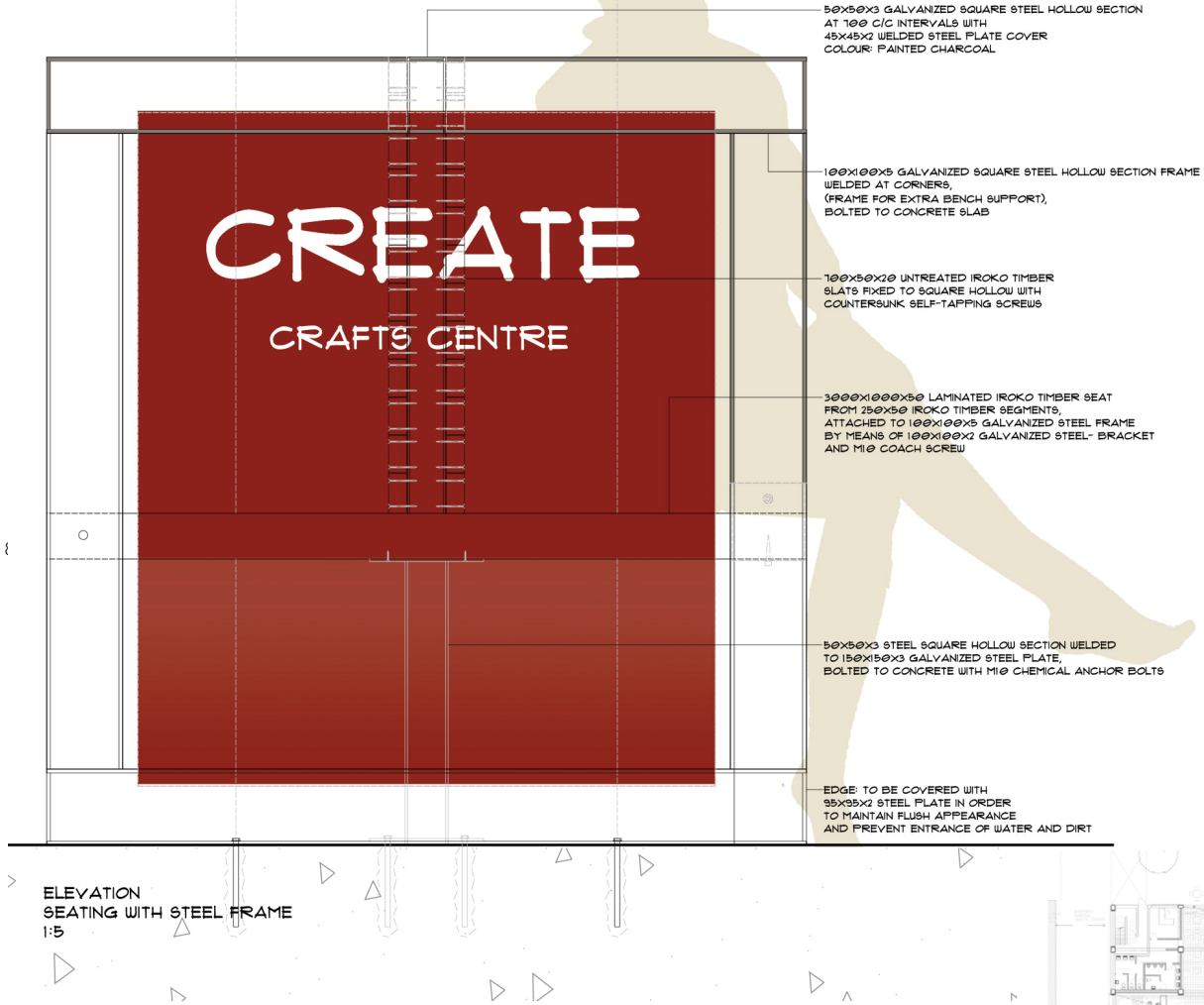


Figure 8.23: Threshold seating detail- not to scale\_ November exam (Author, 2011).

Figure 8.24: Location of detail in building- not to scale\_ November exam (Author, 2011).





PLAN  
 WITH EXISTING COLUMN  
 1:10

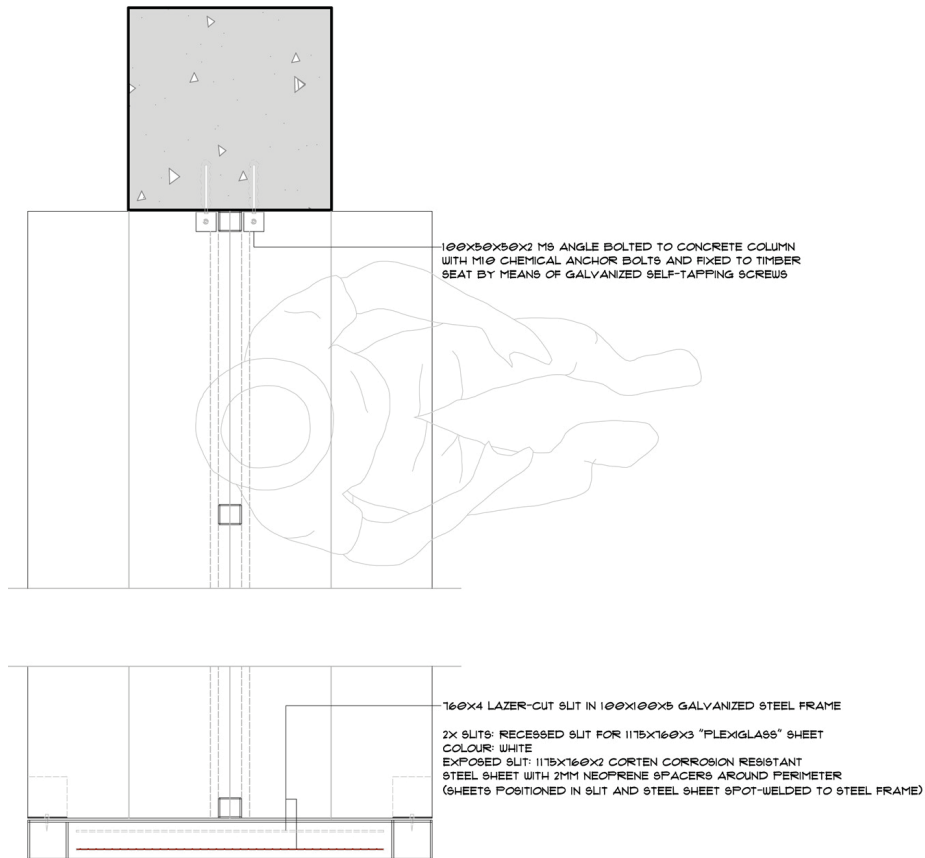


Figure 8.25: Threshold seating detail- not to scale\_ November exam (Author, 2011).



Figure 8.26: 3D interior illustration (Author, 2011).