



LYF[TAAL]

SPORT FOR DEVELOPMENT COMMUNITY CENTRE- OLIEVENHOUTBOSCH

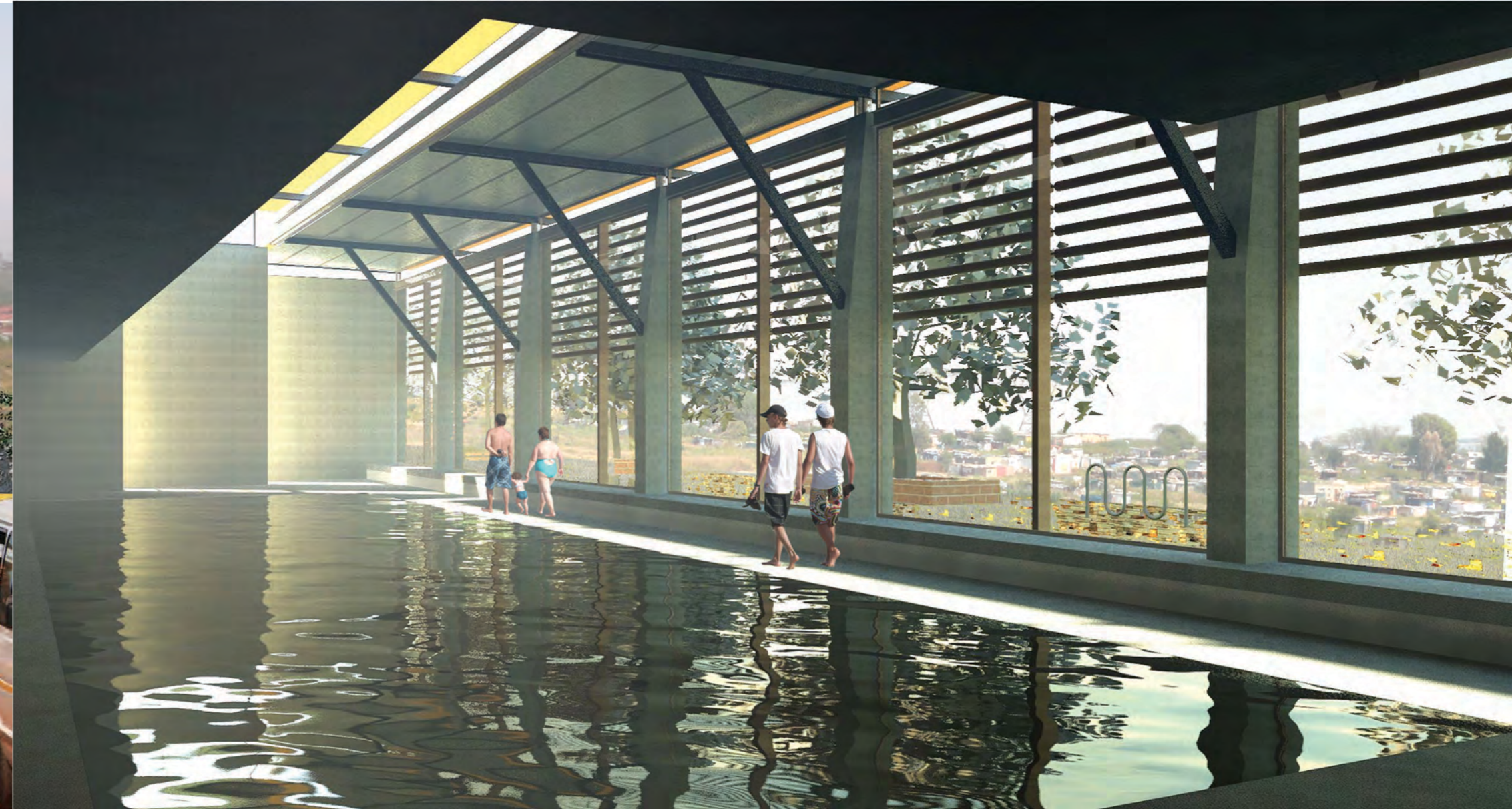
FINAL DRAWINGS

06



LYF[TAAL]

SPORT FOR DEVELOPMENT COMMUNITY CENTRE- OLIEVENHOUTBOSCH



LYF[TAAL]

SPORT FOR DEVELOPEMENT COMMUNITY CENTRE- OLIEVENHOUTBOSCH

SITE PLAN

Not to scale



fig 195. Site Plan

FIRST FLOOR PLAN

Not to scale

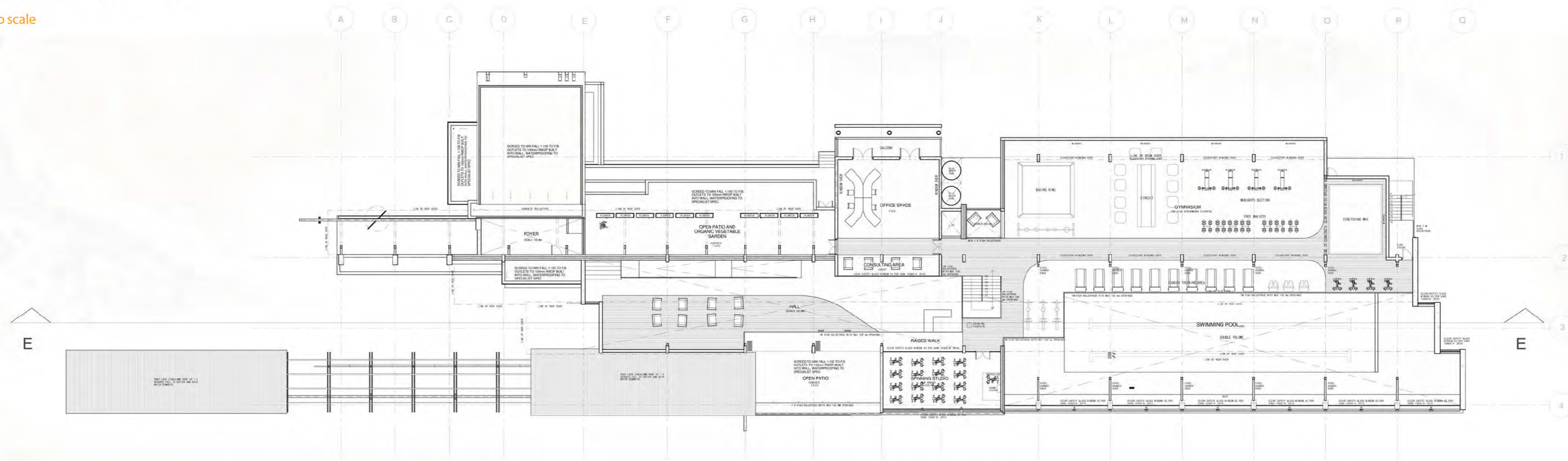
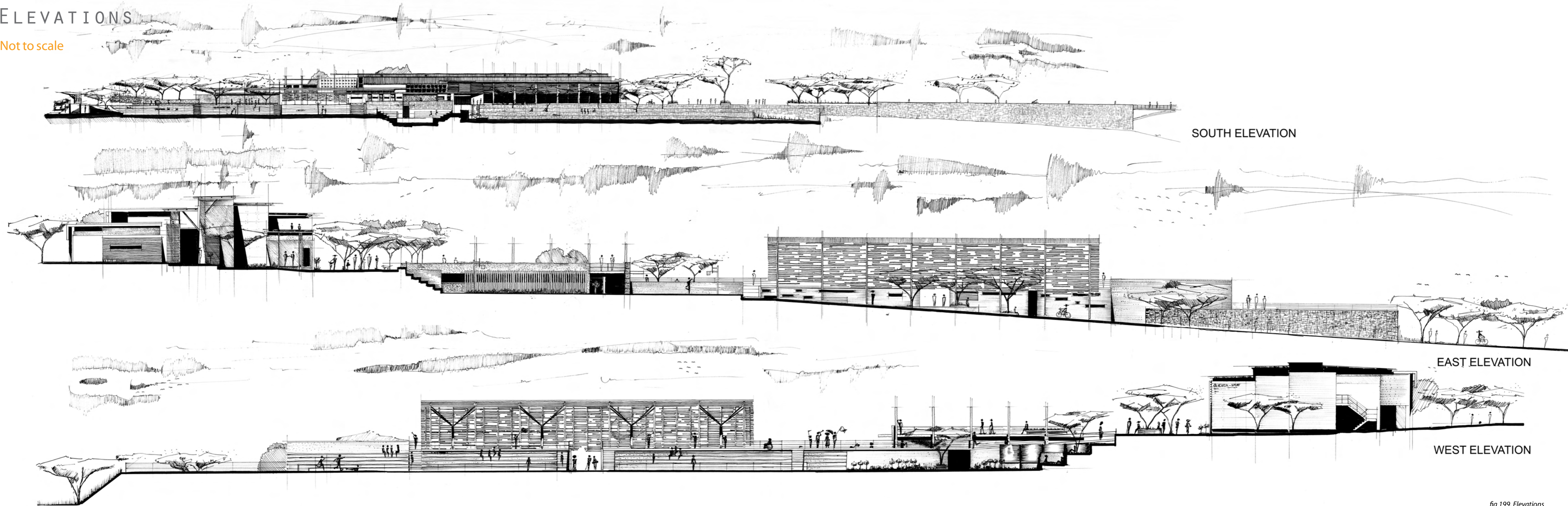


fig 198. First Floor Plan

ELEVATIONS

Not to scale



DETAIL SECTION C-C

Not to scale

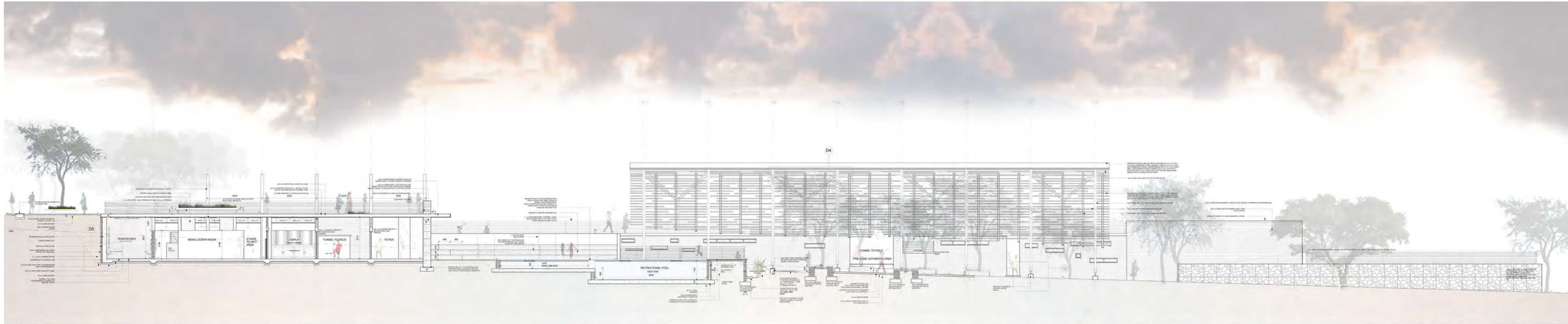


fig 201. Section C-C

DETAIL SECTION D-D

Not to scale

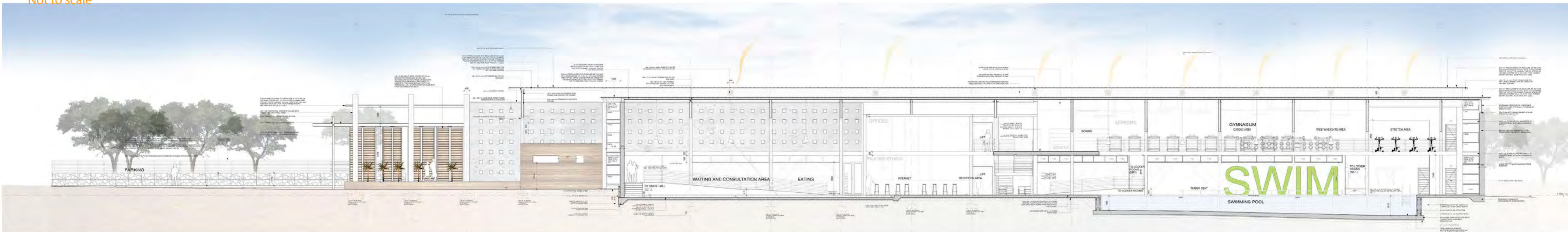


fig 202. Section D-D

ROOF DETAILS

Not to scale

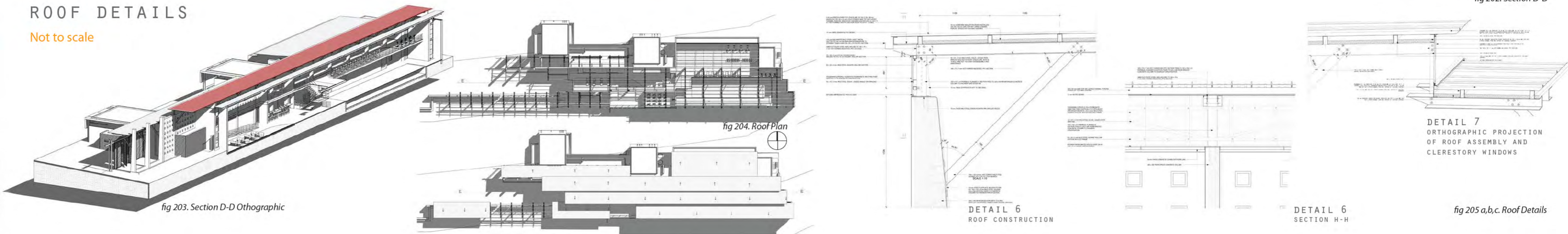


fig 203. Section D-D Orthographic

fig 204. Roof Plan

DETAIL 6
ROOF CONSTRUCTION

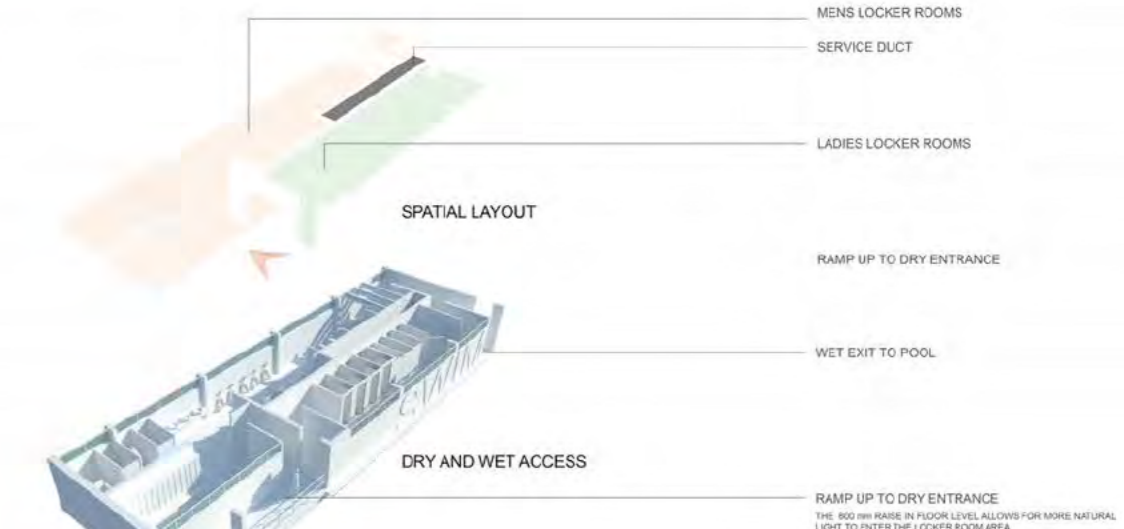
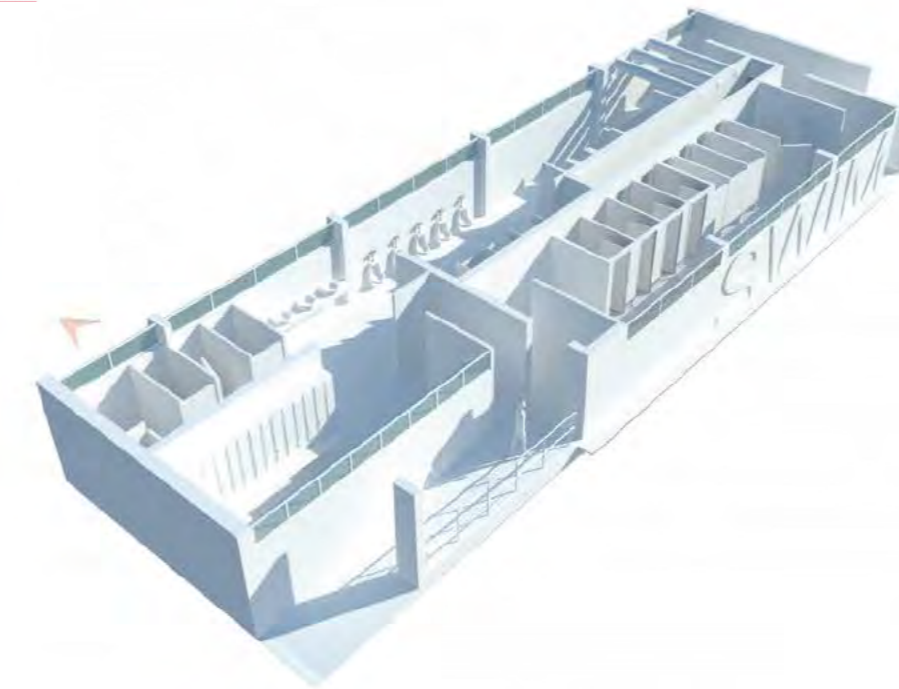
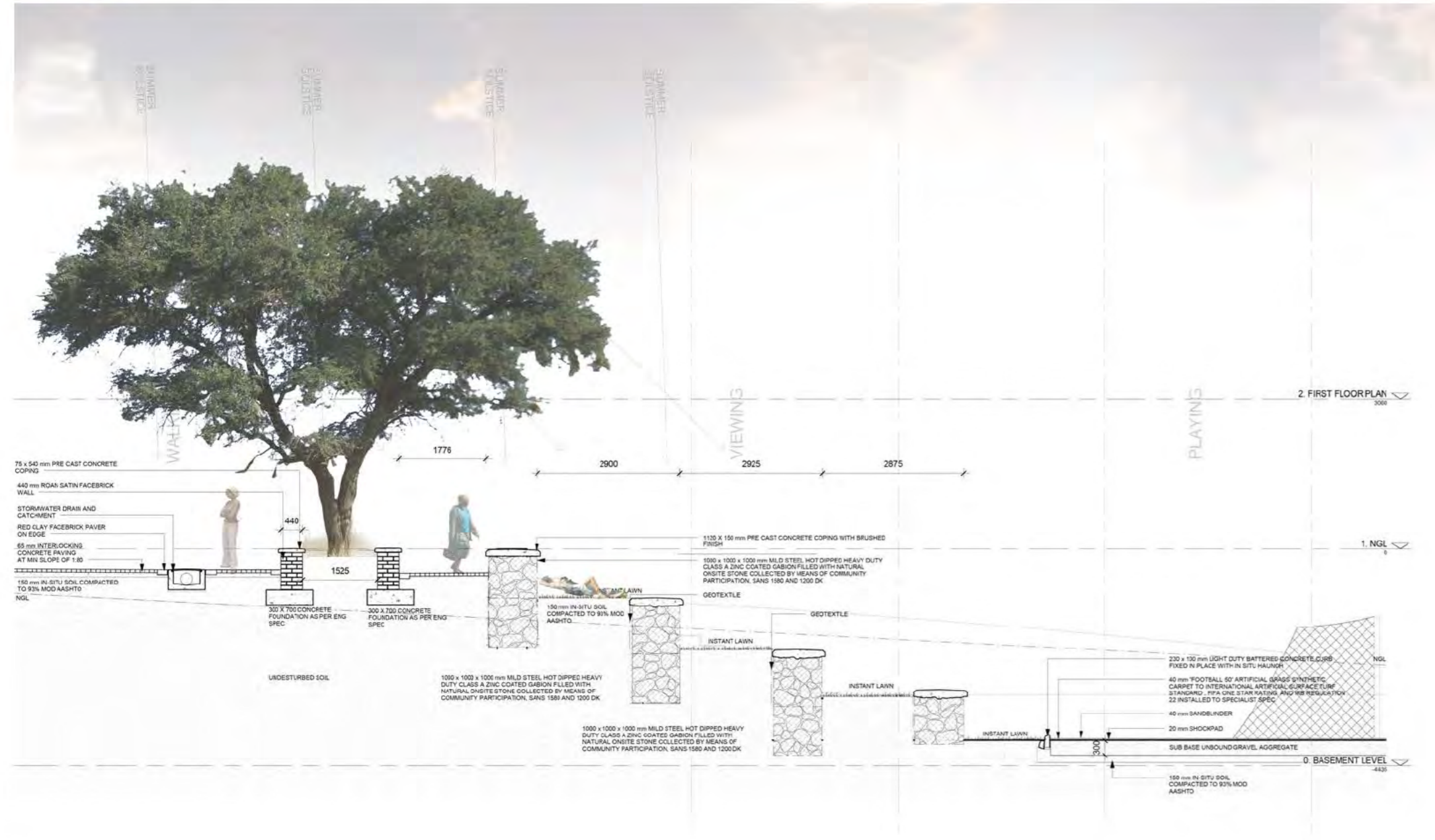
DETAIL 6
SECTION H-H

fig 205 a,b,c. Roof Details

DETAIL 7
ORTHOGRAPHIC PROJECTION
OF ROOF ASSEMBLY AND
CLERESTORY WINDOWS

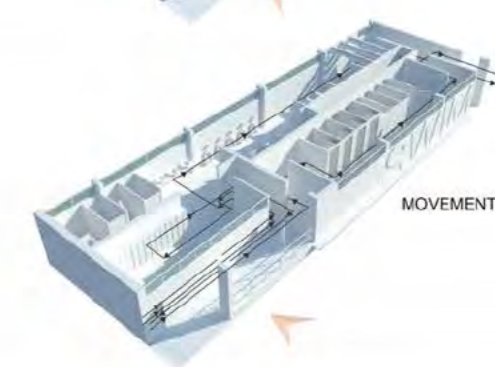
DETAIL SECTION E-E

Not to scale



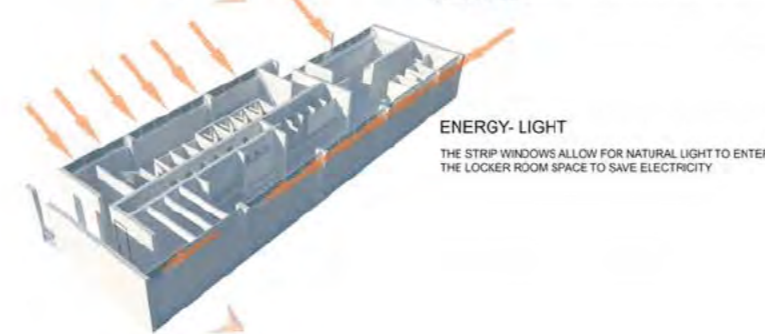
ENERGY - WARM WATER
WATER IS PRE HEATED BY MEANS OF SOLAR PANELS ON THE ROOF BEFORE GOING TO THE ELECTRIC GEYSERS IN THE DUCT.

VENTILATION
STRIP WINDOWS ON THE NORTH PROVIDE ADEQUATE VENTILATION FOR THE MENS LOCKER ROOMS.
THE LADIES LOCKER ROOMS REQUIRE MECHANICAL ASSISTANCE BY MEANS OF A WALL MOUNTED EXTRACTOR FAN WITHIN THE DUCT.



MOVEMENT

SPORT ARCHITECTURE REQUIRES AN UNDERSTANDING OF THE RITUALS THAT ACCOMPANY THE SPORT ENVIRONMENT. THESE RITUALS HAVE BEEN CAREFULLY CONSIDERED IN THE BATHROOM LAYOUT AND MOVEMENT PATTERNS. THE MALE LOCKER ROOM ESSENTIALLY WRAP AROUND THE FEMALE LOCKER ROOMS TO PROVIDE AN ADDITIONAL ACCESS TO THE POOL AREA.



ENERGY - LIGHT
THE STRIP WINDOWS ALLOW FOR NATURAL LIGHT TO ENTER THE LOCKER ROOM SPACE TO SAVE ELECTRICITY.

GYM LOCKER ROOMS

Isolated view
Not to scale

fig 207. Bathroom Isolated

SCALED MODEL

The Process

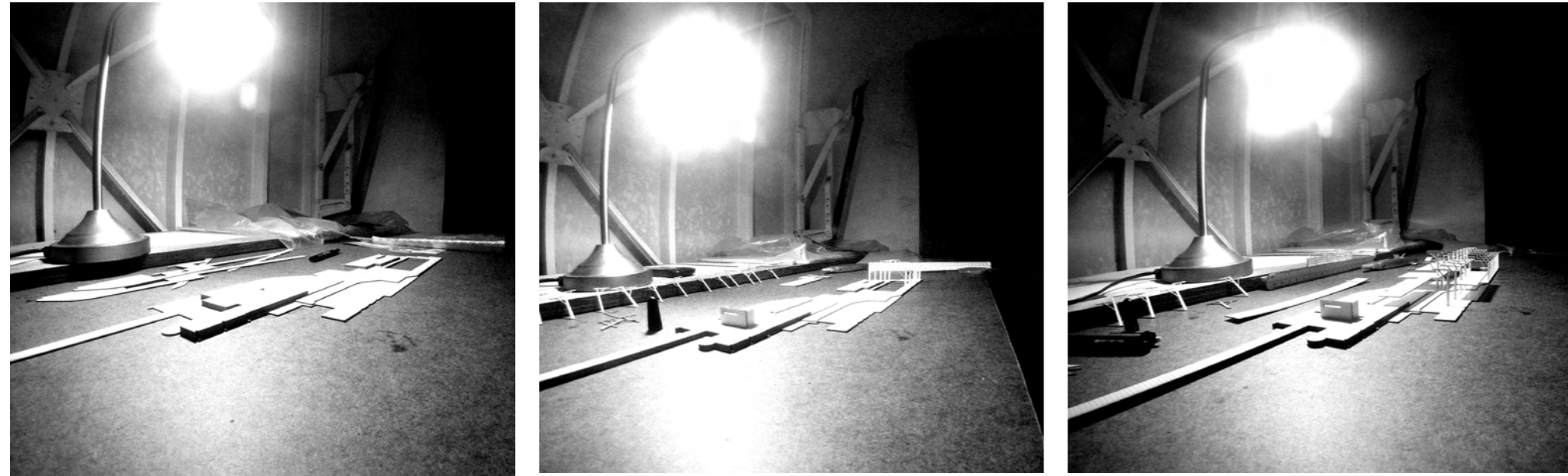


fig 209. Night view from field



fig 210. Detail Model

SCALED MODEL

Final



fig 211. Detail Model.